



ARDEX FL™ Grout Installation Overview

Before installing ARDEX FL™ Grout, please review the technical data sheet completely.

Mixing

Mix ARDEX FL Grout with cold clean water –
Add water first then add ARDEX FL Grout

- 25 lb. (11.3 kg) bag - **2 1/4 - 2 1/2 quarts (2.1 - 2.3 L)**
- 10 lb. (4.5 kg) box - **28 to 32 oz. (0.8 - 0.9 L)**
- Smaller quantities by hand,
4 parts powder to 1 part water by volume

Mix **2 to 3 minutes** to a creamy, smooth, lump-free consistency

No slake time is required!

ARDEX FL Grout mixes to a revolutionary new consistency that is creamy and much looser than other grouts... easier filling of the grout joint, significantly more coverage in less time, fuller grout joints and excellent color consistency.

Installation

Using a rubber float, move the grout over the joints until they are completely filled. You will notice immediately that ARDEX grouts are much creamier and smoother than traditional grouts.

ARDEX FL has a working time of **30 minutes**.

Remove all excess grout from the face of the tile using the rubber float in a snowplow fashion at a 45° angle to ensure the grout is not pulled from the joint.

Washing

Let the ARDEX FL Grout set for **30 to 40 minutes*** at 70°F (21°C). Wash off with a lightly dampened ARDEX Sponge. Do not wash the grout off as you go! ARDEX grouts are formulated differently than traditional grouts to provide full hard grout joints but easy clean-up of the face of the tile.

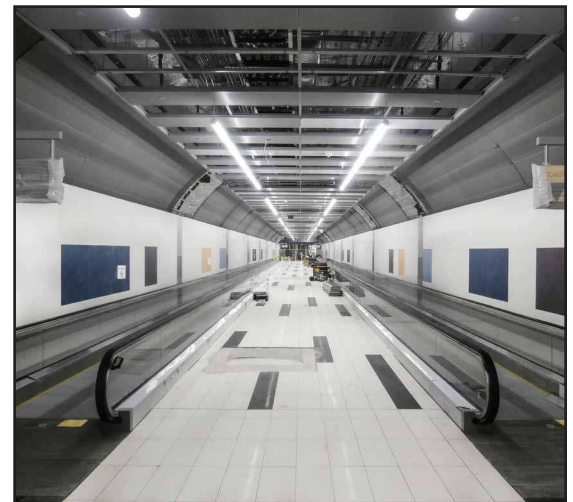
ARDEX FL Grout can accept traffic in **just 90 minutes!**

Any dry film (haze) remaining on the tile surface is removed easily with an ARDEX sponge or similar after the grout is completely hardened in the joints.

* Grout may set faster than 30 to 40 minutes in extremely warm temperatures. Once the grout has taken a firm set in the joints, the joints can be formed and the residual grout can be removed easily with a lightly dampened ARDEX sponge. If the grout hardens on the face of the tile, unlike other grouts, it can be cleaned easily using a white Scotch-Brite® pad, or similar, working in a circular motion to loosen the grout. Remove with a barely damp ARDEX sponge, rinsing the sponge with clean water after each pass.



Revolutionary new creamy, smooth consistency



Fills easily for fuller and stronger joints



Wash after 30 to 40 minutes*



ARDEX FL™ Grout Color Chart

Polar White 01		Stone Beach 13		Stormy Mist 25	
Fresh Lily 02		Chocolate Mousse 14		Organic Earth 26	
Sugar Cookie 03		Gray Dusk 15		Azure Blue 27	
Antique Ivory 04		Ground Cocoa 16		Gentle Blush 28	
Winter White 05		Coffee Bean 17		Fresh Magnolia 29	
Classic Vanilla 06		Dove Gray 18		Pink Champagne 30	
Floating Driftwood 07		Silver Shimmer 19		Burnt Orange 31	
Vintage Linen 08		Ocean Gray 20		Baked Terra Cotta 32	
Natural Almond 09		Slate Gray 21		Asparagus 33	
Irish Creme 10		Cast Iron 22		Summer Yellow 34	
Barley 11		Charcoal Dust 23		Brilliant White 35	
Wild Mushroom 12		Black Licorice 24			

Due to variations in printing processes, colors are approximate. Please refer to ARDEX grout kits for more accurate color comparisons. Types of tile, substrate and installation environment may cause color variation.

ARDEX FL™ Grout Coverage Chart

ARDEX FL™ Rapid Set Flexible Sanded Grout Coverage Chart								
Grout Joint Size - Square Feet								
Tile Size	1/16" 0.0625	1/8" 0.125	3/16" 0.188	1/4" 0.25	5/16" 0.313	3/8" 0.375	7/16" 0.438	1/2" 0.5
1" x 1" x 1/4"	92.0	47.5	32.7	25.5	21.1	18.3	16.3	14.9
2" x 2" x 1/4"	181.1	92.0	62.2	47.5	38.6	32.8	28.6	25.5
4-1/4" x 4-1/4" x 5/16"	304.7	153.5	102.8	77.9	62.7	52.7	45.5	40.2
4" x 8" x 1/2"	238.9	120.1	80.3	60.7	48.7	40.9	35.2	31.0
6" x 6" x 1/2"	268.7	135.1	90.3	68.3	54.8	46.0	39.6	34.9
8" x 8" x 3/8"	477.1	239.5	159.9	120.7	96.8	81.1	69.7	61.3
12" x 12" x 3/8"	714.8	358.3	238.9	180.1	144.2	120.7	103.6	91.0
13" x 13" x 3/8"	774.2	388.0	258.6	194.9	156.1	130.6	112.1	98.4
16" x 16" x 3/8"	952.4	477.1	317.9	239.5	191.7	160.3	137.5	120.7
18" x 18" x 3/8"	1071.2	536.5	357.4	269.2	215.4	180.1	154.5	135.5
24" x 24" x 3/8"	1427.6	714.8	475.9	358.3	286.6	239.5	205.3	180.1

Coverage based on 25 lb. bags. Coverage may vary based on jobsite conditions and installation method. Please refer to individual product technical data sheets www.ardexamericas.com

