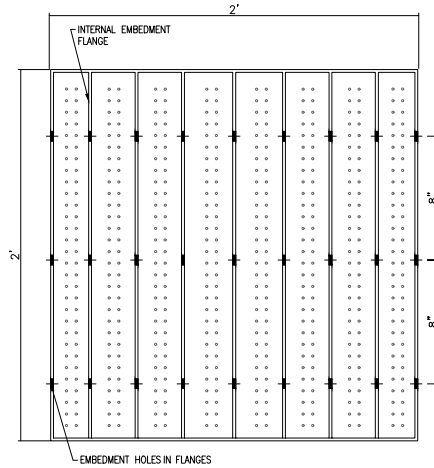
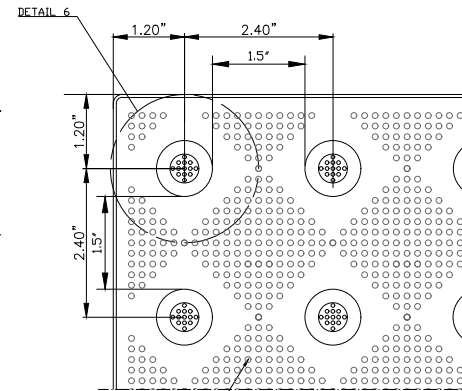


TOP PLAN VIEW

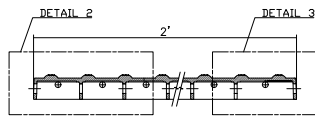


BOTTOM VIEW

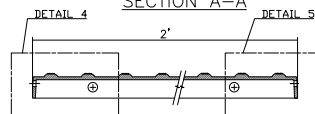


DETAIL 1

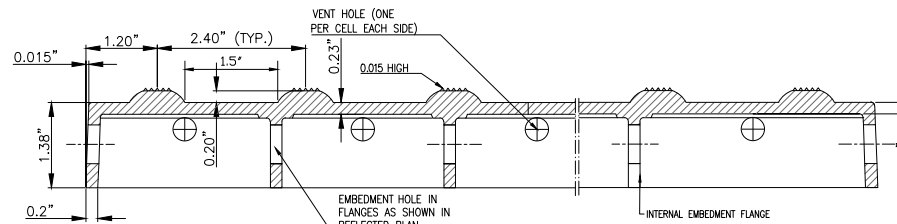
NOTE: FIELD LEVEL MICRO-TEXTURE 36 POINTS PER SQUARE INCH



SECTION A-A

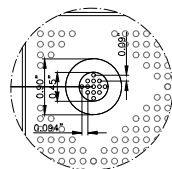


SECTION B-B

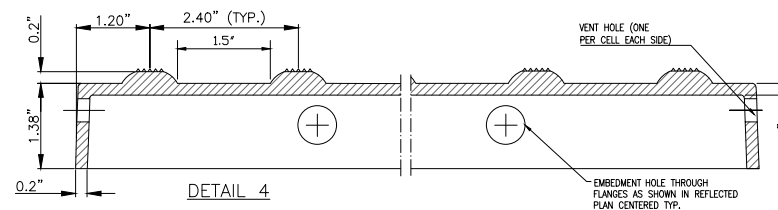


DETAIL 2

DETAIL 3



DETAIL 6



DETAIL 4

DETAIL 5

Armor-Tile



MATERIAL LIST

#	DESCRIPTION	PART No:	QTY
1	ARMOR-TILE	ADA-C-2424W	1

NOTE: ALL DIMENSIONS ARE NOMINAL WITH A TOLERANCE OF ±0.05

No:	DATE	REVISION	APPR.

SCALE

N.T.S.

DESIGNED	K.S.	
DRAWN	M.T.	
DRAWN	M.T.	07/15/2024

DETECTABLE WARNING SURFACE ADA-C-2424W

FIBERGLASS REINFORCED POLYMER COMPOSITE

Armor-Tile™ ADA

Armor-Tile™

DETECTABLE/TACTILE WARNING SURFACE TILE 24"x24" CAST IN PLACE INLINE DOME TACTILE TILE PLANS AND DETAILS

ADA-C-2424W

01