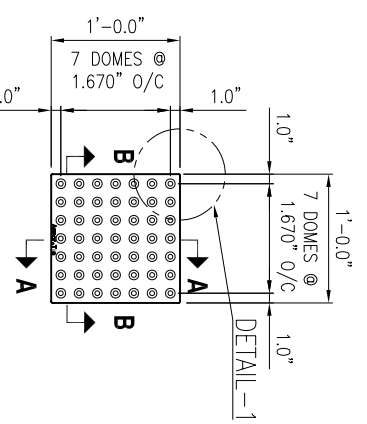
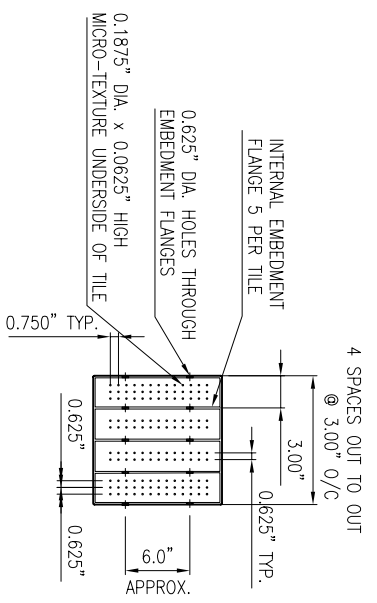




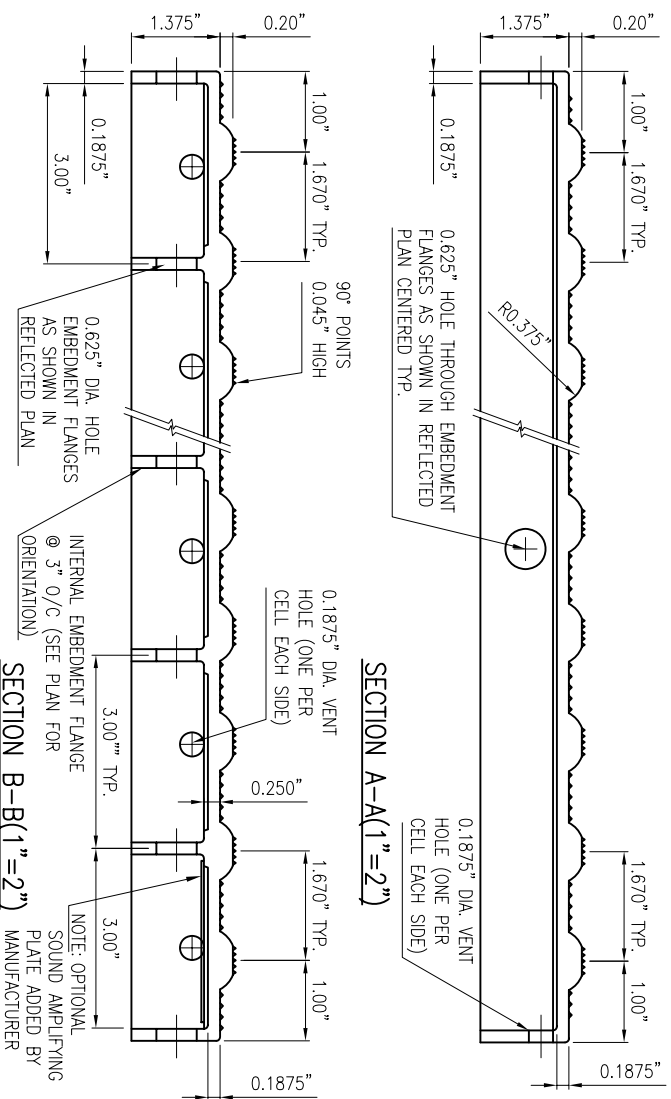
© 2006 ENGINEERED PLASTICS
 CONFIDENTIAL AND PROPRIETARY DOCUMENT
 ANY ONE OR MORE OF THE FOLLOWING PATENTS MAY APPLY
 U. S. PATENT NO. 5,303,669, 5,775,835, 6,449,790, AND 6,895,622 B5
 C.D.N. PATENT NO. 2,032,532, 2,070,984
 US PATENTS PENDING.
 © KENNETH E. SZEKELY



PLAN (1"=1'-0")

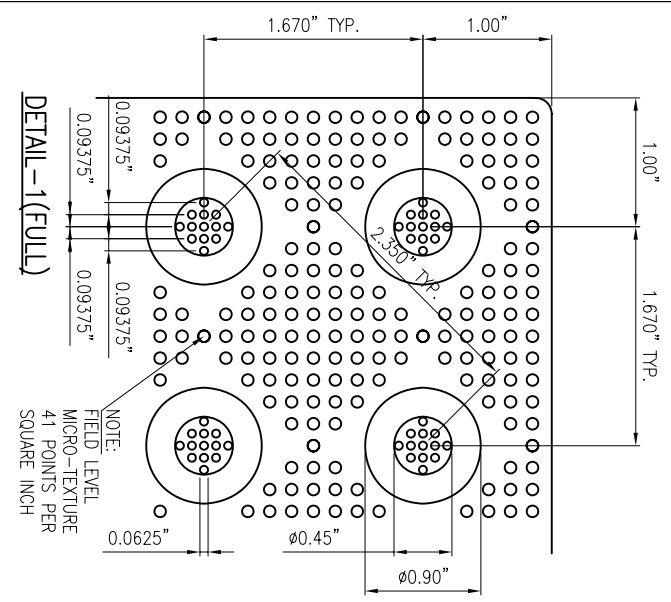


REFLECTED PLAN (1"=1'-0")



SECTION A-A (1"=2")

SECTION B-B (1"=2")



DETAIL-1 (FULL)

** COLOR CODE
 YELLOW (YW), RED (RD), BLACK (BK),
 DARK GREY (DG), LIGHT GREY (LG),
 WHITE (WH), OCRE YELLOW (OY),
 BLUE (BL), COLONIAL RED (CR)
 CUSTOM COLORS AVAILABLE

No.	DATE	REVISION	APPR.

REVISION	BY	DATE
DESIGNED	BR	08/90
DRAWN	K.S.	
CHECKED	D.G.	2/22/2006

SCALE: _____
 TITLE: DETECTABLE WARNING SURFACE ADA-C-1212-**
 MATERIAL: VITRIFIED POLYMER COMPOSITE
 SUBJECT: **Armor-Tile™ ADA**
 SOUND AMPLIFYING DETECTABLE/TACTILE WARNING SURFACE TILE
 PROJECT: **Armor-Tile™**
 DETECTABLE/TACTILE WARNING SURFACE TILE
 12" x 12" CAST IN PLACE
 INLINE DOME TACTILE TILE
 PLANS AND DETAILS
 DRAWING NO.: ADA-C-1212
 REV. NO.: 0