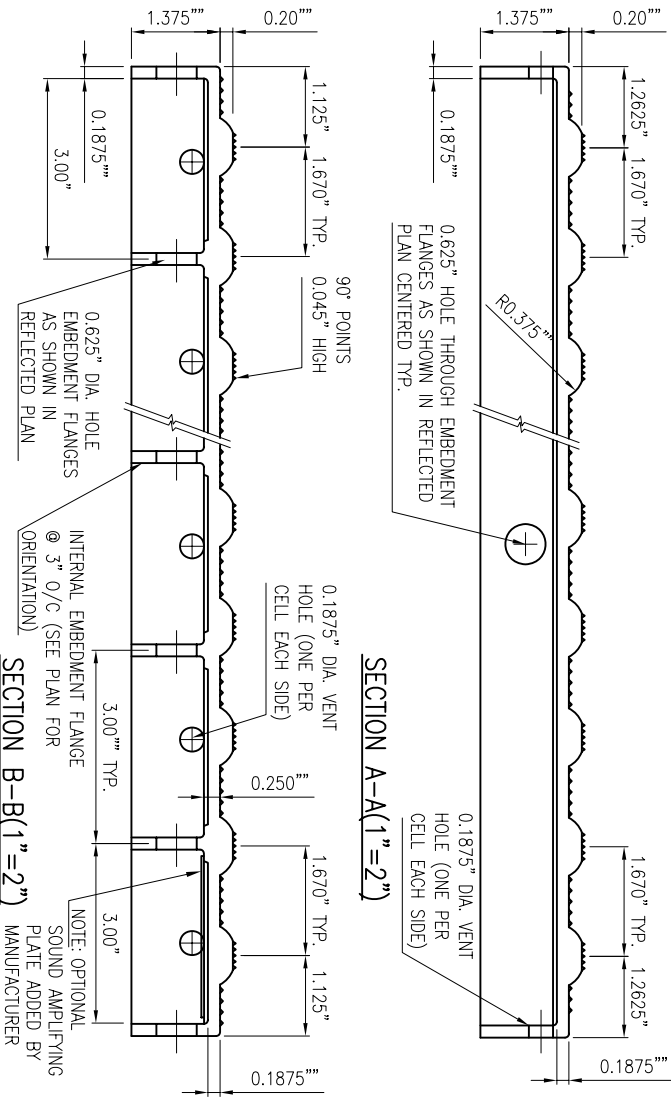
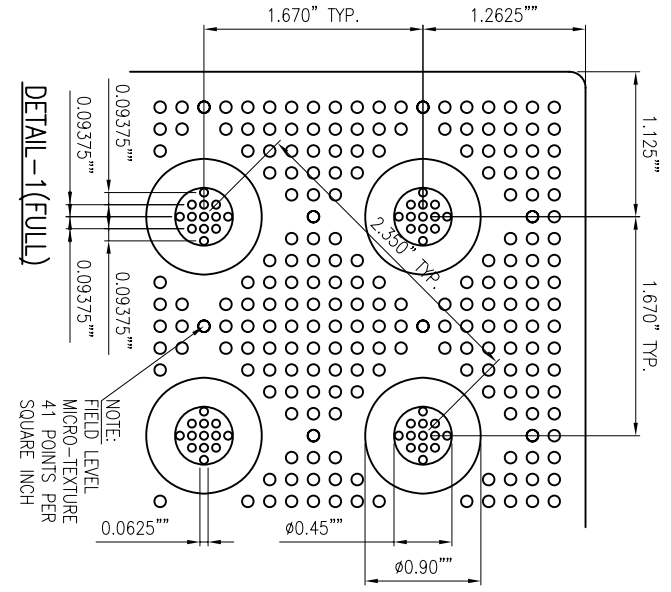


PLAN (1"=0'-0.75")

REFLECTED PLAN (1"=0'-0.75")



SECTION B-B (1"=2")



www.armor-tile.com

Armor-Tile ENGINEERED PLASTICS

© 2006 ENGINEERED PLASTICS
 CONFIDENTIAL AND PROPRIETARY DOCUMENT
 ANY ONE OR MORE OF THE FOLLOWING PATENTS MAY APPLY
 U. S. PATENT NO. 5,303,669, 5,775,835, 6,449,790, AND 6,895,622 B5
 C.D.N. PATENT NO. 2,032,532, 2,070,984
 US PATENTS PENDING.
 © KENNETH E. SZEKELY

#	DESCRIPTION	PART NO.	QTY
1	ARMOR-TILE	ADA-S-2460-**	1

MATERIAL LIST

** COLOR CODE
 YELLOW (YV), RED (RD), BLACK (BK), DARK GREY (DG), LIGHT GREY (LG), WHITE (WH), OCRE YELLOW (OY), BLUE (BL), COLONIAL RED (CR)
 CUSTOM COLORS AVAILABLE

No.	DATE	REVISION	APPR.

SCALE

DESIGNED	BY	DATE
	K.S.	08/90

ISSUED	BY	DATE
	D.G.	2/22/2006

CHECKED

PROJECT NUMBER

TITLE: DETECTABLE WARNING SURFACE ADA-C-2460-**

SUBJECT: VITRIFIED POLYMER COMPOSITE

PROJECT

Armor-Tile[™]
 SOUND AMPLIFYING DETECTABLE/TACTILE WARNING SURFACE TILE

24" x 60" CAST IN PLACE INLINE DOME TACTILE TILE PLANS AND DETAILS

SPACING NO: ADA-C-2460

REV. NO: 0