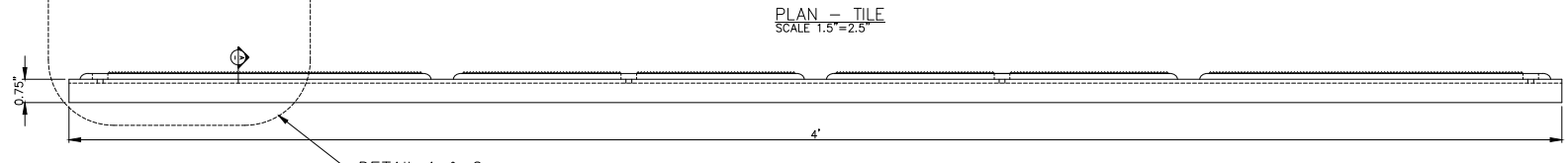
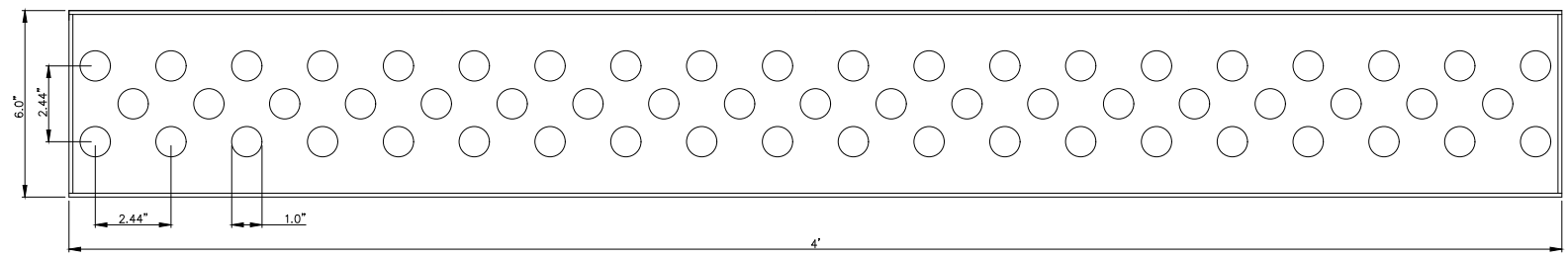


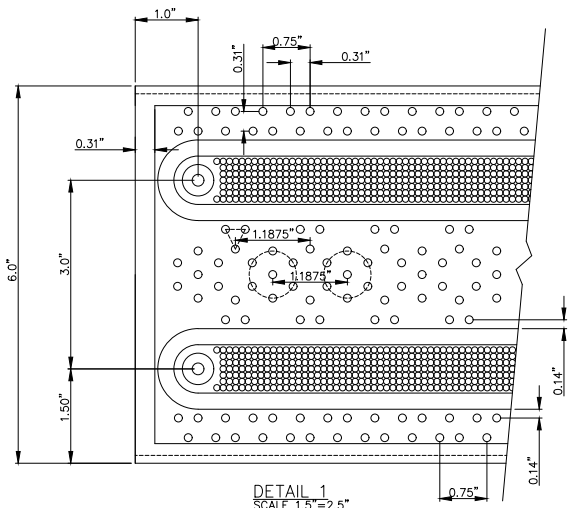
PLAN - TILE
SCALE 1.5"=2.5"



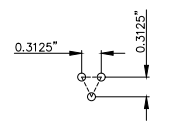
SIDE - TILE
SCALE 1.5"=2.5"



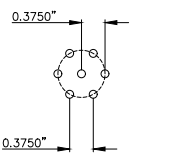
REFLECTED PLAN
SCALE 1.5"=2.5"



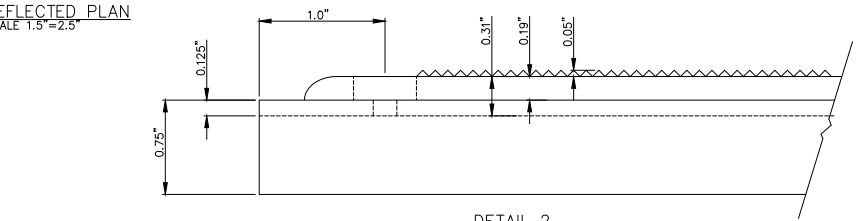
DETAIL 1
SCALE 1.5"=2.5"



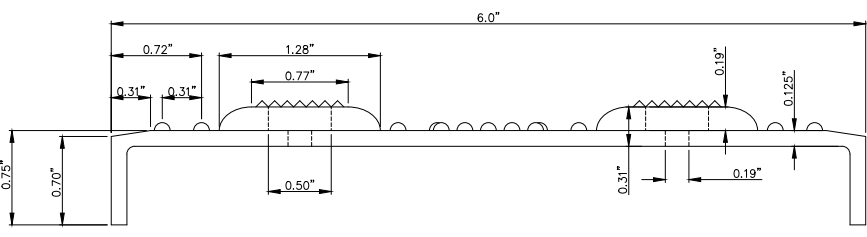
PATTERN DETAIL A
SCALE 1.5"=2.5"



PATTERN DETAIL B
SCALE 1.5"=2.5"



DETAIL 2
SCALE 1.5"=2.5"



SECTION A-A
SCALE 1.5"=2.5"

MATERIAL LIST			
#	DESCRIPTION	PART No:	QTY
1	ARMOR-TILE	ADD-504	1
2	EXPANSION ANCHOR	ADA-FAST	8
3	ARMOR-BOND	ADA-ADHE-EA	1
4	ARMOR-SEAL	ADA-SEAL-EA	1

No:	DATE	REVISION	APPR.

DESIGNED	BY	DATE
	K.S.	
DRAWN		
	D.G.	07/15/2024
CHECKED		
PROJECT MANAGER		

TRADE: DETECTABLE WARNING SURFACE
 PART No: ADA-D-448
 MATERIAL: FIBERGLASS REINFORCED POLYMER COMPOSITE
 SUBJECT: SOUND AMPLIFYING DETECTABLE/TACTILE WARNING SURFACE TILE

Armor-Tile™ ADA
 SOUND AMPLIFYING DETECTABLE/TACTILE WARNING SURFACE TILE

PROJECT: **Armor-Tile™**
 DETECTABLE/TACTILE DIRECTIONAL TILE
 6" x 48" SURFACE APPLIED BAR TILE
 PLANS AND DETAILS

DRAWING No:	ADD-504	REV. No:	0
-------------	---------	----------	---