



© 2006 ENGINEERED PLASTICS  
 CONFIDENTIAL AND PROPRIETARY DOCUMENT  
 ANY ONE OR MORE OF THE FOLLOWING PATENTS MAY APPLY  
 U. S. PATENT NO. 5,303,669, 5,775,835, 6,449,790, AND 6,895,622 B5  
 C.D.N. PATENT NO. 2,032,532, 2,070,984  
 US PATENTS PENDING.  
 © KENNETH E. SZEKELY

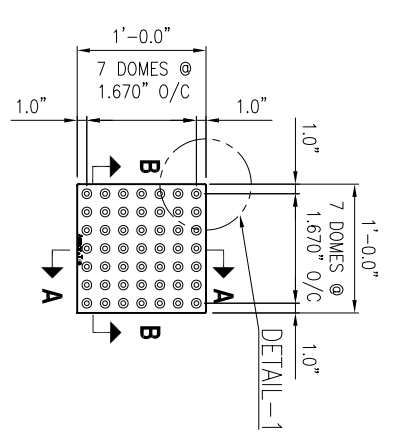
MATERIAL LIST	
#	DESCRIPTION PART No. QTY
1	ARMOR-TILE ADA-P-1212-** 1

\*\* COLOR CODE  
 YELLOW (YW), RED (RD), BLACK (BK),  
 DARK GREY (DG), LIGHT GREY (LG),  
 WHITE (WH), OCRE YELLOW (OY),  
 BLUE (BL), COGNAC, RED (CR)  
 CUSTOM COLORS AVAILABLE

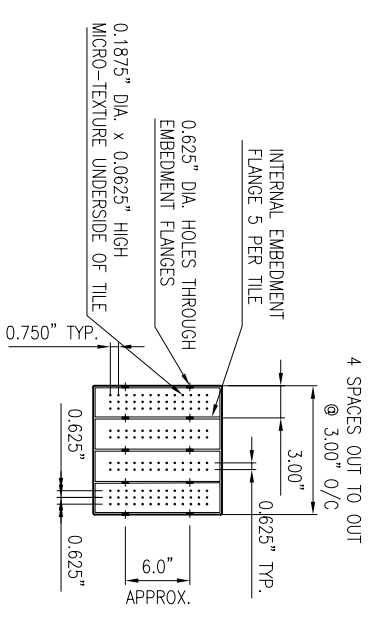
No.	DATE	REVISION	APPR.

SCALE	DESIGNED	BY	DATE
		K.S.	08/90
		D.G.	2/22/2006

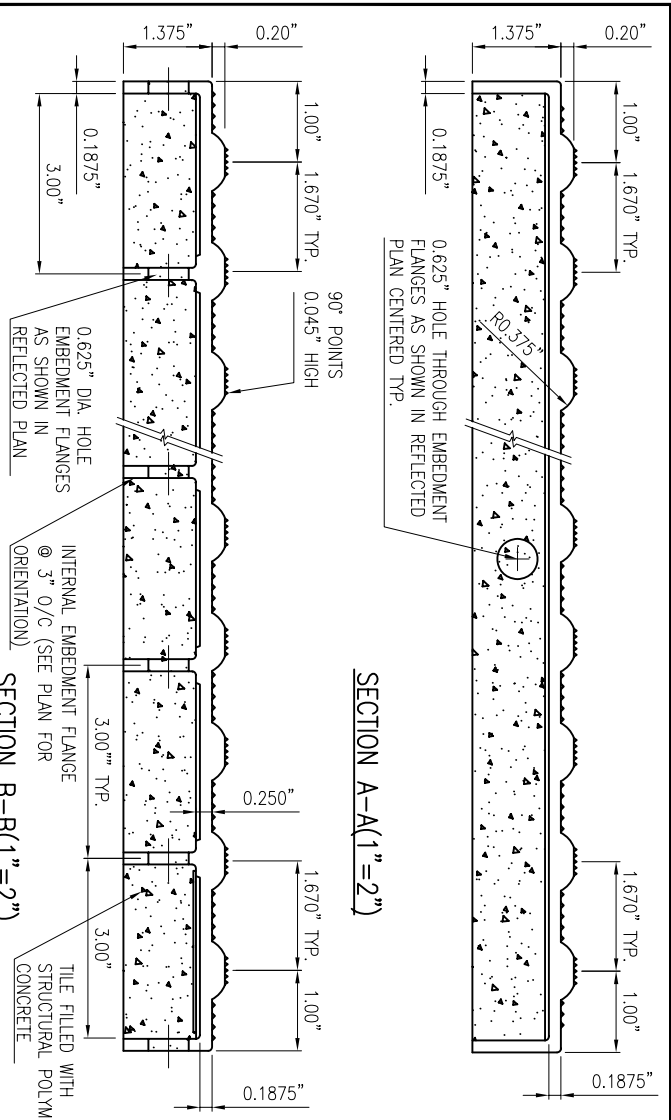
PROJECT MANAGER: [ ]  
 TITLE: DETECTABLE WARNING SURFACE ADA-P-1212-\*\*  
 MATERIAL: VITRIFIED POLYMER COMPOSITE  
 SUBJECT: **Armor-Tile™ ADA**  
 SOUND AMPLIFYING DETECTABLE/TACTILE WARNING SURFACE TILE  
 PRODUCT: **Armor-Tile™**  
 DETECTABLE/TACTILE WARNING SURFACE TILE  
 12" x 12" MODULAR PAYER  
 INLINE DOME TACTILE TILE  
 PLANS AND DETAILS  
 DRAWING No.: ADA-P-1212 REV. No.: 0



PLAN (1"=1'-0")

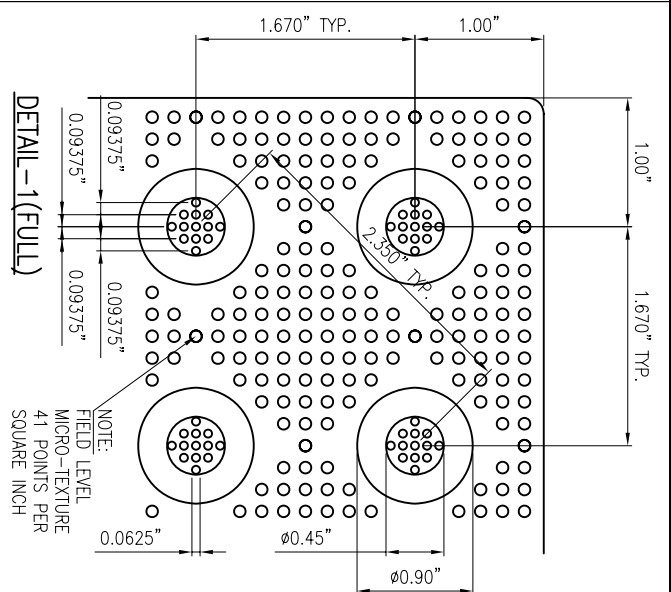


REFLECTED PLAN (1"=1'-0")



SECTION A-A (1"=2")

SECTION B-B (1"=2")



DETAIL-1 (FULL)

NOTE:  
 FIELD LEVEL  
 MICRO-TEXTURE  
 41 POINTS PER  
 SQUARE INCH