

AXIOM® Glazing Channel

Trim for Glass Partitions

straight



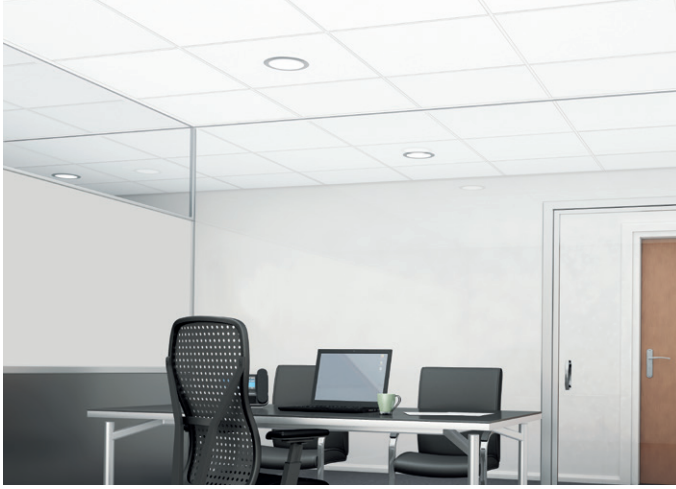
LEED® WELL | LBC

50% RECYCLED CONTENT

energy management
construction waste mgmt
regional materials
design for flexibility
EPD
recyclable/producer resp.
biobased materials
recycled content
sourcing of raw materials
material ingredient reporting
low emitting materials
lighting quality
acoustics

Calculate sustainability with Green Genie
armstrongceilings.com/greengenie

LOCATION DEPENDENT



VISUAL SELECTION

Item No.	Description	Dimensions (Inches)
AXIOM Glazing Channel Trim	AXGC Acoustical-to-Acoustical	120 × 2-3/8 × 2"
	AXGCS Seismic Acoustical-to-Acoustical	120 × 3-1/4 × 2"
	AXGCV Vector Acoustical-to-Acoustical	120 × 2-3/8 × 2-1/2"
	AXGCAD Acoustical-to-Drywall	120 × 2-1/2 × 2"
	AXGCD Drywall-to-Drywall	120 × 2-1/2 × 2"

NOTE: Bottom and side U-Channels for glass installation provided by glazing contractor. Interior glass partition installation is also addressed at armstrongceilings.com/commonconditions

* Interior glass partition installation is also addressed at armstrongceilings.com/commonconditions

Axiom® Glazing Channel extruded aluminum trim for 3/8" and 1/2" glass partition walls offers fully concealed integration with all Armstrong acoustical and drywall ceiling systems. Glass disappears into the plenum* to create a clean, installed visual.

KEY SELECTION ATTRIBUTES

- Five trim profile options to coordinate with lay-in, Tegular and Vector® ceiling panels and drywall grid system
- Axiom® trim is part of the Sustain™ portfolio and meets the most stringent industry sustainability compliance standards today
- CleanAssure™ family of products – includes disinfectable panels, suspension systems, and trim (Cleaning and CDC-approved disinfecting options available on armstrongceilings.com/cleaning)
- Coordinated fit and finish ensures delivery of design intent
- Seismic solution for category D, E, F installations

- Coordinates with Armstrong ceiling and suspension systems; custom colors available
- 10-Year Limited Warranty, 30-Year System Warranty

COLORS

Standard



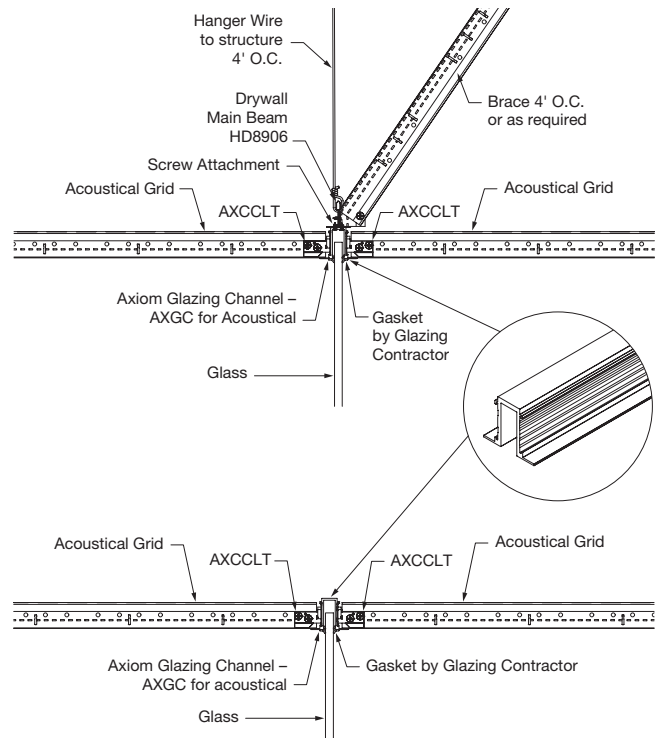
White (WH)

Custom Colors Available**

** Colors that are pre-qualified to meet Sustain portfolio requirements are available upon request. Other made-to-order colors must be evaluated if sustainability criteria is required. Lead time will increase.

DETAILS

CAD drawings available at armstrongceilings.com/axiom



ACCESSORIES

Item No.	Description	Dimensions (Inches)
AXSPICE2	Splice Plate with Set Screws	N/A
AXCCLT	T-Bar Connector Twist Clip	N/A
7239	Adjustable Trim Clip***	N/A

*** For use with specialty ceilings with grid offset greater than 3/8"; installs with Armstrong Drywall Grid System. Contact TechLine for details.

