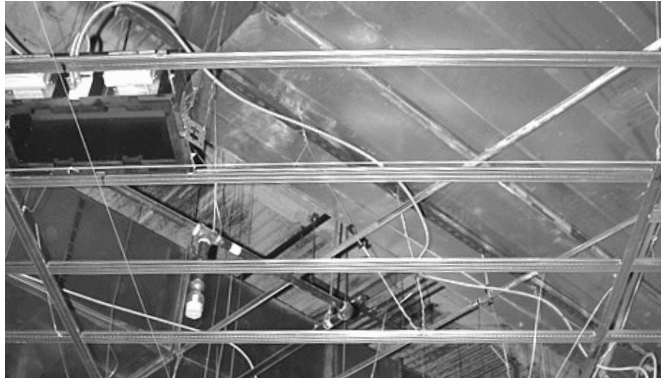


FRAMEALL™ Drywall Grid Systems

6' DGS Cross Tee



SUSTAIN™
High Performance
Sustainable
Ceiling Systems



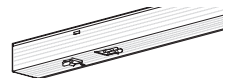
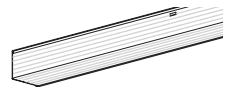
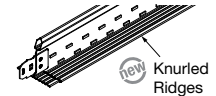
6' DGS Cross Tee: Speeds installation and reduces material costs.

KEY SELECTION ATTRIBUTES

- 6' spacing on main beams results in cost savings of 10-15% by reducing material, hanger wire, and time to install
- Supports up to 2 layers of gypsum board (see load chart for tee and wire spacing)
- Knurled Ridges on cross tees improve screw grab during board application
- Extra rout holes to accommodate F-Type light fixtures
- Rotary stitching on double web adds strength and stability
- Deep knurled surface for easy screw insertion
- G40, .018" metal thickness meets ASTM C645
- UL® fire rated

VISUAL SELECTION

Item No. ♦	Length/Item Description	Face Dimensions	Profile Height	Simple Span Uniform Load at L/240 (lbs./LF)
XL8965	6' Drywall Grid Cross Tee	1-1/2"	1-1/2"	6 ft. Span – 6.4
HD8906	12' Tee (Knockouts 8" O.C.)	1-1/2"	1-1/2"	2" Span – 143 3" Span – 57.3 4" Span – 28.14
KAM10	10' Knurled Angle Molding	1-1/4" x 1-1/4"	1-1/4" x 1-1/4"	N/A
KAM12	12' Knurled Angle Molding	1-1/4" x 1-1/4"	1-1/4" x 1-1/4"	N/A
KAM12HRC	12' Knurled Angle Molding	1-1/4" x 1-1/4"	1-1/4" x 1-1/4"	N/A
KAM1510	10' Knurled Angle Molding	1-1/2" x 1-1/2"	1-1/2" x 1-1/2"	N/A
KAM1512	12' Knurled Angle Molding	1-1/2" x 1-1/2"	1-1/2" x 1-1/2"	N/A
KAM21020	10' Knurled Angle Molding	2" x 2"	2" x 2"	N/A
KAM21025	12' Knurled Angle Molding	2" x 2"	2" x 2"	N/A
SC151220EQ	12' x 1-1/2" SimpleCurve® Knurled Angle Molding	1-1/2"	1-1/2"	N/A
SC151225	12' x 1-1/2" SimpleCurve® Knurled Angle Molding	1-1/2"	1-1/2"	N/A
SC21220EQ	12' x 2" SimpleCurve® Knurled Angle Molding	2"	2"	N/A
SC21225	12' x 2" SimpleCurve® Knurled Angle Molding	2"	2"	N/A
LAM12	12" Locking Angle Molding (Locking tabs 8" O.C.)	1-1/4" x 1-1/4"	1-1/4"	N/A
LAM12HRC	12" Locking Angle Molding (Locking tabs 8" O.C.)	1-1/4" x 1-1/4"	1-1/4"	N/A
LAM151220	12" Locking Angle Molding (Locking tabs 8" O.C.)	1-1/2" x 1-1/2"	1-1/2"	N/A



Membrane Load Values	Component Combination	Max Load in lbs/SF (L/240)	Max Load in lbs/SF (L/240)	Max Load in lbs/SF (L/240)	Max Load in lbs/SF (L/240)
	Wires 48" O.C. / Tees 24" O.C.	3.20	4.66	4.8	9.38
	Wires 42" O.C. / Tees 16" O.C.				
	Wires 48" O.C. on Main Beams / Wires mid-span on Tees/Tees 24" O.C.				

NOTE: 5/8" drywall weighs 2.4 lbs/SF or less (tees installed 16" or 24" O.C.) 1/2" drywall weighs 2.0 lbs/SF or less (tees installed 16" O.C. only)
*For other combinations, consult TechLine at 1 877 276-7876

DRYWALL INSTALLATION SYSTEMS – Standard

FRAMEALL™ Drywall Grid Systems

6' DGS Cross Tee



LEED® WELL™ LBC

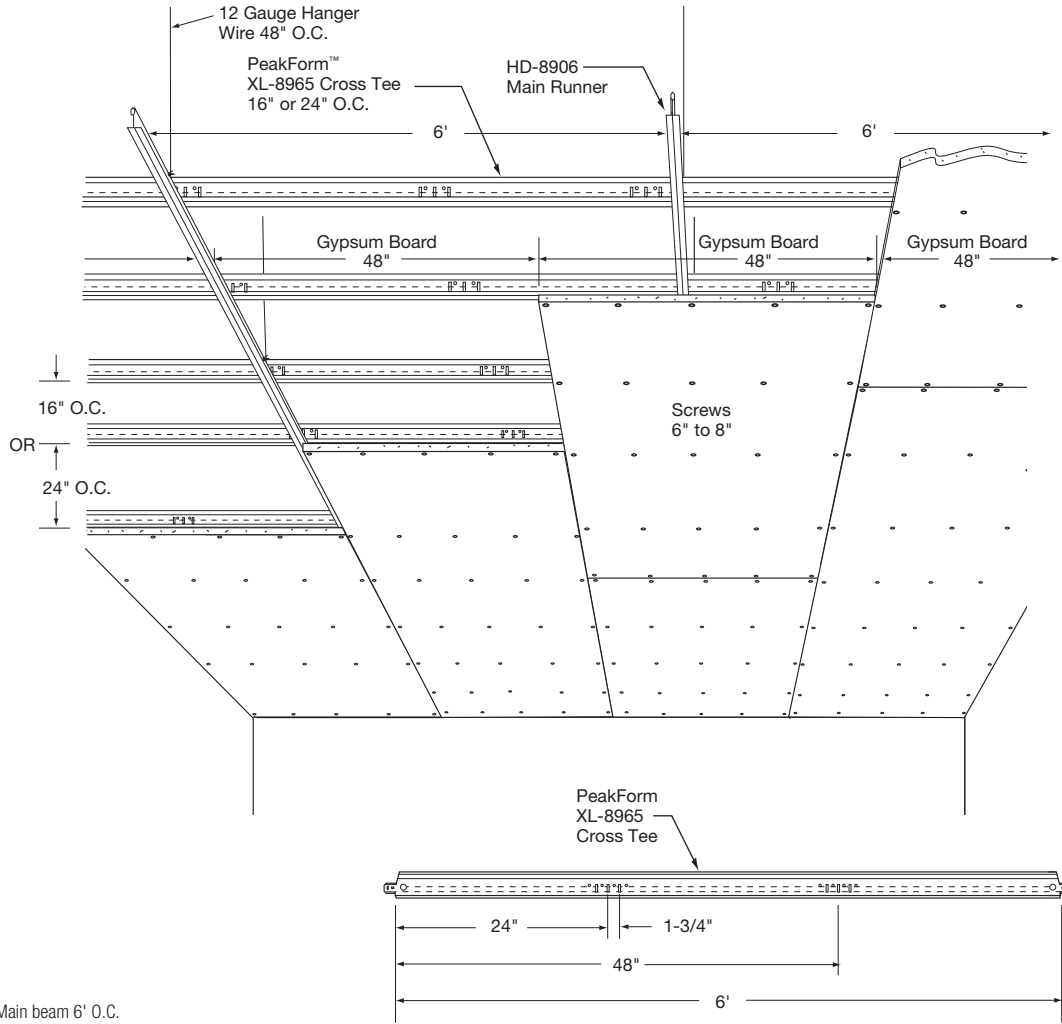
UP TO **30% RECYCLED CONTENT**

- energy management
- construction waste mgmt
- regional materials
- design for flexibility
- EPD
- recyclable/producer resp.
- biobased materials
- recycled content
- sourcing of raw materials
- material ingredient reporting
- low emitting materials
- lighting quality
- acoustics

LOCATION DEPENDENT

Well Building Standard™ (WELL) Living Building Challenge® (LBC)

INSTALLATION NOTES



1. Main beam 6' O.C.
2. Hanger wire 2', 3', or 4' O.C.
3. Rout holes for Type F light fixture
4. Reduction in hanger wire and main beam
5. UL® Fire Rated: Fire Guard™ components meet UL Design Listings D501, D502, G523, G524, G526, G527, G528, G529, G531, J502, L502, L508, L513, L515, L525, L526, L529, L564, P501, P506, P507, P508, P509, P510, P513, P514.
6. Faster installation
7. Tees 16" O.C. support two layers of 5/8" gypsum board (with hanger wire 42" O.C. along main beams)
8. Tees 24" O.C. support one layer of 5/8" gypsum board (with hanger wire 48" O.C. along main beams)
9. Gypsum board attached to cross tees
10. Bridging on cross tees requires extra wire for weight of light fixtures, diffusers, and other mechanical

Ideal for 15' wide Bedrooms in Condos and Hotels

Need only two rows of main beams 6' O.C. Then cut border tee in half (no waste).

