



SUSTAIN[®]
Ceiling Systems
Reach New Heights of
Sustainability

SUSTAIN[®]

Meet Your Sustainability Goals Your Way

No matter what sustainability or design challenges you're facing, Armstrong[®] Sustain[®] makes your decisions simpler by offering the largest forward-thinking portfolio of healthy ceiling and wall solutions with verified material transparency, and low-embodied carbon*.

In an industry where meeting evolving sustainability goals can be an increasingly complex equation, Sustain strives to make your decisions simple.

Just look for the Sustain icon.



SUSTAIN[®]
High Performance
Sustainable
Ceiling Systems

* Embodied carbon reduction based on EC3 baseline for ceilings. The EC3 tool is managed by and available through [Building Transparency](#).

FeltWorks[®] Blades Ebbs and Flows, ▶
The Sheward Partnership, Philadelphia PA



HEALTHY, SUSTAINABLE, VERIFIED

Declare.



Select products with verified performance and ingredient transparency with consistent reporting of product contents and associated health information; harmonized with industry programs.



▼ Ultima® Ceiling Panels with Silhouette® 9/16" Suspension System and USAI® Linear Lighting; Hudson Bay Companies, New York, NY; SOM Architects





▲ Ultima® Ceiling Panels with Prelude® 15/16" Suspension Systems; Loganville Elementary School, Loganville PA; RLPS Architects

CUT CARBON

Leading edge solutions that reduce carbon across a product's entire lifecycle:

- Broadest portfolio of low-embodied carbon solutions
- By focusing on embodied carbon, we can deliver solutions to minimize the overall project's impact
- Deeply committed to its own sustainability goals, Armstrong is constantly working to innovate and add new solutions

Minimize overall project environmental impact by selecting leading edge solutions from the broadest portfolio of low-embodied carbon ceiling and wall products that prove carbon reductions across a product's entire lifecycle.

The Sustain® portfolio makes selecting ceiling and wall solutions that meet sustainability criteria easier and less time consuming at scale. Solutions for every design goal, with easy-to-specify products that clearly communicate transparency and optimization information.



▲ WoodWorks® Grille Tegular 24" x 48" panels in Golden Maple finish; USAI® Micro™ downlights

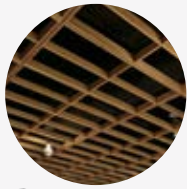
DECISIONS, SIMPLIFIED



WoodWorks® Solid Ceiling & Wall Panels

FINISHES AVAILABLE *

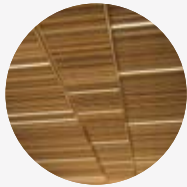
Due to printing limitations, shade may vary from actual product.



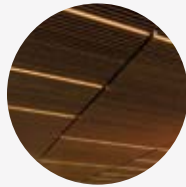
new WoodWorks®
Open Cell



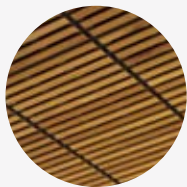
new WoodWorks®
Grille – Classics



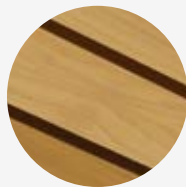
new WoodWorks®
Grille – Forté



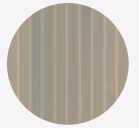
new WoodWorks®
Grille Tegular



new WoodWorks®
Linear Tegular



new WoodWorks®
Linear Solid



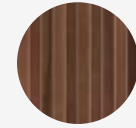
Bleached
Grey (GBG)



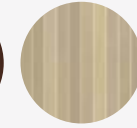
Classic
Grey (GCG)



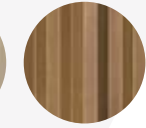
Carbon
Grey (GCB)



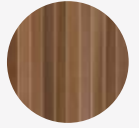
Rich
Mahogany (GRY)



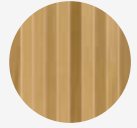
Antique
Oak (GAO)



Red Oak (GRK)



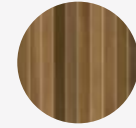
English
Chestnut (GEC)



Golden
Maple (GGM)



Natural
Walnut (GWN)



Warm
Oak (GWO)



Forest
Walnut (GFW)

LEGACY FINISHES



Maple
(GMP)



Light
Cherry (GLC)



Dark
Cherry (GDC)



Custom Wood
Species and Finishes
Available*

* Colors and tints that are pre-qualified to meet Sustain® portfolio requirements are available upon request. Other made-to-order colors and tints must be evaluated if sustainability criteria is required. Lead time will increase.

NOTE: Painted White is not included in the Sustain portfolio.

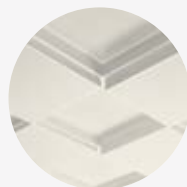
Metal Ceiling Panels



MetalWorks™
Blades – Classics



MetalWorks™
Clip-on



MetalWorks™
3D



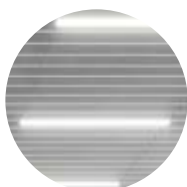
MetalWorks™
Torsion Spring



MetalWorks™
Torsion Spring
Shapes



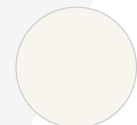
MetalWorks™
Shapes
for DesignFlex®



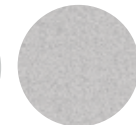
MetalWorks™
Immix™ Blades



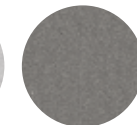
MetalWorks™
Immix™ Linear



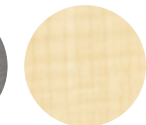
Whitelume
(WHA)



Silverlume
(SIA)



Gun Metal
(MYA)



Cool Maple
(LCM)



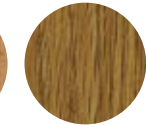
Honey Maple
(LHM)



Honest Maple
(LHS)



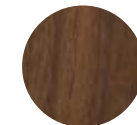
Spring Cherry
(LSC)



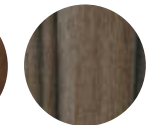
Beloved Oak
(LBO)



MetalWorks Blades –
Classics M1
unperforated only



English Walnut
(LEW)



Midnight Forest
(LMD)

MetalWorks Immix panels are only available in WHA, SIA, and MYA finishes

Felt Ceiling & Wall Panels



FeltWorks®
Acoustical Panels

NOTE: Custom size panels are also part of the Sustain® portfolio

COLORS AVAILABLE

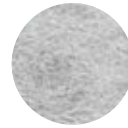
Due to printing limitations, shade may vary from actual product.



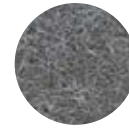
White
(FWH)



Beige
(FBG)



Light Grey
(FLG)



Dark Grey
(FDG)



Black
(FBL)



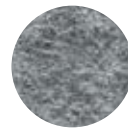
FeltWorks®
Blades – HookOn
FeltWorks®
Open Cell



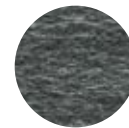
Cotton
(FCN)



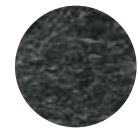
Whisper
(FWR)



Flannel
(FFL)



Smoke
(FSE)



Shadow
(FSW)



Midnight
(FMN)



Wheat
(FWT)



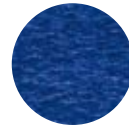
Mocha
(FMC)



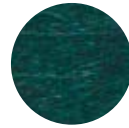
Celestial
(FCL)



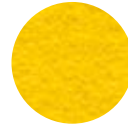
Elderberry
(FEB)



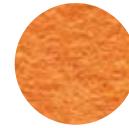
Iris
(FIS)



Highland
(FHL)



Buttercup
(FBC)

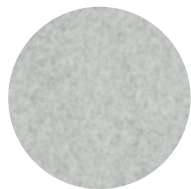


Tangerine
(FTE)



Apple
(FAP)

NOTE: Custom size panels are also part of the Sustain® portfolio



new FeltWorks®
Blades –
VarAffix™



Iron
(FIR)



Graphite
(FGH)



Cloud
(FCD)



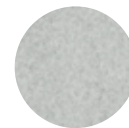
Fog
(FOG)



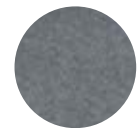
Frost
(FFS)



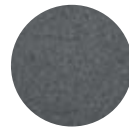
Ecru
(FEC)



Bedrock
(FBR)



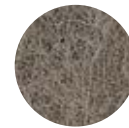
Nickel
(FNK)



Steel
(FST)



Sand
(FSD)



Coconut
(FCT)



Peat
(FPT)

Tectum® Wood Fiber Ceiling & Wall Panels

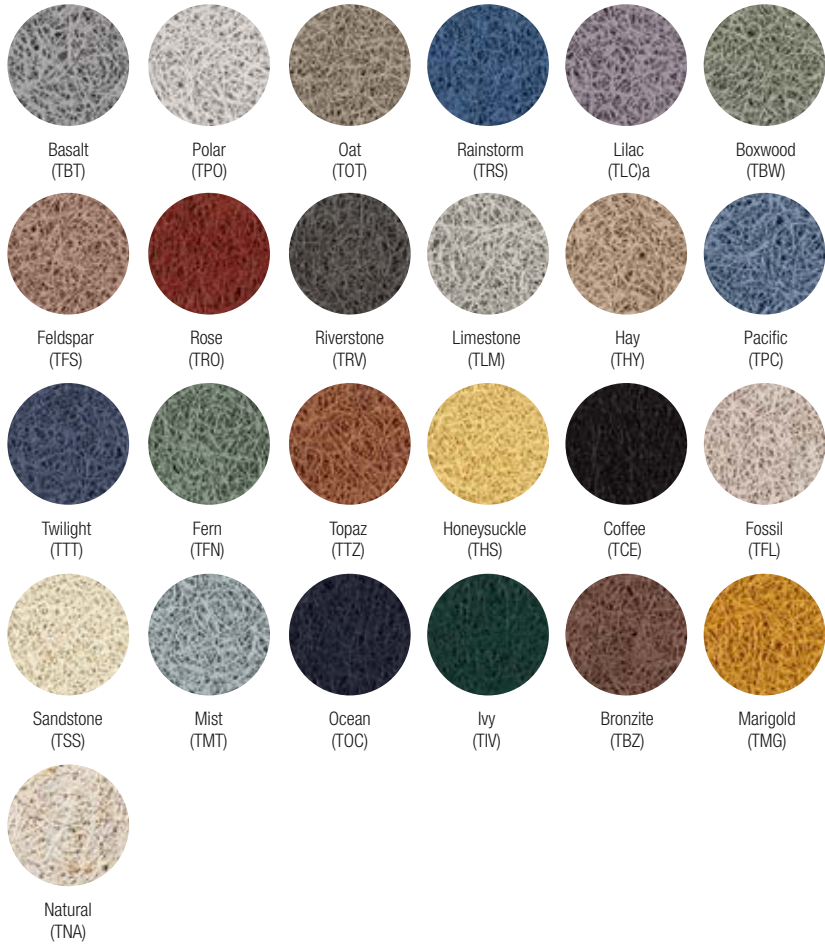


Tectum®
DesignArt™ –
Shapes
Tectum®
DesignArt™ –
Lines

NOTE: Custom size panels in 1" thickness are also part of the Sustain® portfolio

COLORS AVAILABLE

Due to printing limitations, shade may vary from actual product.



Tectum®
Lay-in



Tectum®
Tegular



Tectum®
Direct-Attach
Tectum® Create!™
Direct-Attach
Tectum®
Finale™ PB



Tectum®
High NRC



Natural
(TNA)



White
(TWH)

NOTE: Custom size panels in 1" thickness are also part of the Sustain® portfolio



▲ Tectum® DesignArt™ – Shapes Direct-Attach wall panels, Calla® 9/16" Square Tegular and 9/16" Suprafine® Grid

COLORS AVAILABLE *

Due to printing limitations, shade may vary from actual product.



White (WH)

Black (BL)

Available in any color!*

** PrivAssure panels only available in White

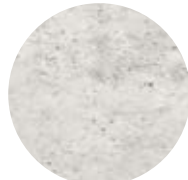
*** Backstage Noir panels only available in Black



Calla® / Calla® High NRC
Calla® High CAC
Calla® Health Zone™
Calla® Shapes
Calla® PrivAssure®**
Calla® Health Zone™
AirAssure®



Lyra® PB
Lyra® PB High CAC
Lyra® PB Shapes
Lyra® PB Vector®
Lyra® PB Concealed
Lyra® PB Capz™



Lyra® PB
Direct-Applied
White and Concrete



Backstage Noir™ ***



Optima® PB
Optima® PB Health Zone™
Optima® PB Shapes
Optima® PB Vector®
Optima® PB Concealed
Optima® PB Capz™



Ultima®
Ultima® Health Zone™
Ultima® Health Zone™
AirAssure®
Ultima® Shapes
(More Ultima online)



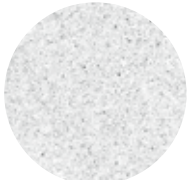
Canyon®



InvisAcoustics™
White and Field Paintable
Concrete



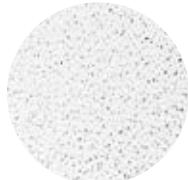
White (WH)



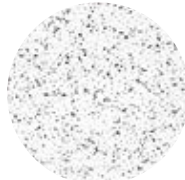
Dune™



Mesa™



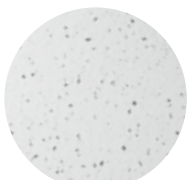
Fine Fissured™
School Zone®
Fine Fissured™
School Zone®
Fine Fissured™
AirAssure®



Cortega®



Kitchen Zone™



Clean Room™ FL

* Colors and tints that are pre-qualified to meet Sustain® portfolio requirements are available upon request. Other made-to-order colors and tints must be evaluated if sustainability criteria is required. Lead time will increase.



Cirrus®



White (WH)



Ivory (IV)



Medium Taupe (MT)



Light Grey (LG)



Grey Stone (GS)



Tech Black (BL)

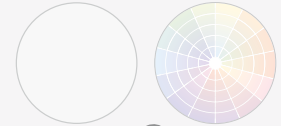
AcoustiBuilt® Seamless Acoustical Ceiling & Wall System



new White Fine Texture
Finish for
AcoustiBuilt® Panels

COLORS AVAILABLE *

Due to printing limitations, shade may vary from actual product.



White
(WH)

new Available in
any off-white tint!
* Sustain compliant
upon request

Suspension Systems



Prelude® XL®



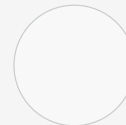
Suprafine® XL®
Suprafine® XM
for DesignFlex®



Interlude® XL®



Silhouette® XL®



White
(WH)



Black
(BL)



Available in
any color!

Drywall Grid Systems
not available in colors



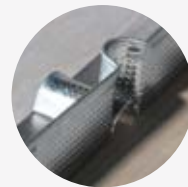
FrameAll™ Drywall Grid
ShortSpan® Drywall
Framing System
QuikStix™ Drywall
Grid System for Soffits



DynaMax®
Prelude® XL Max®
Structural Framing System



SimpleSoffit®
Drywall Framing
System



SimpleCurve®
and KAM

* Colors and tints that are pre-qualified to meet Sustain® portfolio requirements are available upon request. Other made-to-order colors and tints must be evaluated if sustainability criteria is required. Lead time will increase.

Trim & Transitions



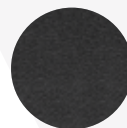
Axiom® Classic, Vector®,
Knife Edge®, Interlude®,
Paired



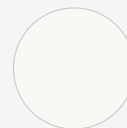
Axiom® Transitions,
Moldings and
Column Rings,
Glazing Channel



Blizzard White
(ZW)



Charcoal
Black (ZB)



White
(WH)



Ivory
(IV)



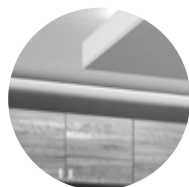
Medium Taupe
(MT)



Light Grey
(LG)



Axiom®
Axiom Shade Pockets
Core and Shell



Axiom®
Direct & Indirect
Light Covers



Grey Stone
(GS)



Tech Black
(BL)



Silver Satin
(SA)



Silver Grey
(SG)



Gun Metal
Grey (MY)

TAKE THE NEXT STEP

1 877 276 7876

Customer Service Representatives
7:45 a.m. to 5:00 p.m. EST
Monday through Friday

TechLine – Technical information, detail drawings,
CAD design assistance, installation information,
other technical services – 8:00 a.m. to 5:30 p.m. EST,
Monday through Friday. FAX 1 800 572 8324
or email: techline@armstrongceilings.com

For complete Sustain® overview and product
transparency documents, visit:
armstrongceilings.com/sustain

armstrongceilings.com/commercial

Latest product news

Standard and custom product information

Online catalog

CAD, Revit®, SketchUp® files

A Ceiling for Every Space® Visual Selection Tool

Product literature and samples – express service
or regular delivery

Contacts – reps, where to buy, who will install

Proud supporter of Embodied Carbon
in Construction Calculator (EC3)*



All Sustain products are listed in the
mindful MATERIALS® library



* The EC3 tool is managed by and available through
Building Transparency.

SketchUp® is a registered trademark of Trimble, Inc.; Revit® is a registered trademark of Autodesk, Inc.; Declare® is a registered trademark of the International Living Future Institute®; The Health Product Declaration® logo is a registered trademark of HPD Collaborative; mindful MATERIALS® is a registered trademark of mindful MATERIALS, Inc.; USAI® and Micro™ are trademarks of USAI, LLC; all other trademarks used herein are the property of AWI Licensing LLC and/or its affiliates
© 2023 AWI Licensing LLC • Printed in the United States of America

armstrongceilings.com/sustain

On the cover: ►
Lyra® PB Wood Look Panels
in Earl Grey Teak

Armstrong®
CEILING & WALL SOLUTIONS