

# METALWORKS™ Mesh

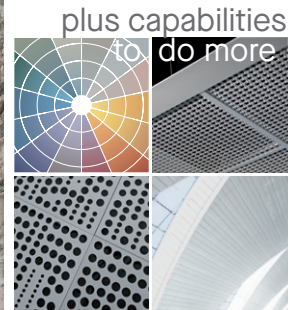
## Lay-in & Tegular



**FAST 134**  
Select Items Ship Fast  
armstrongceilings.com/fast134



CAD/Revit® drawings at:  
armstrongceilings.com/cadrevit



MetalWorks Mesh panels in Nickel Chrome finish: 24" x 48", 24" x 72", and 24" x 96" Trellis and Lattice panels; 24" x 24" Scallops panels; suspension system and Axiom® trim in Gun Metal Grey

armstrongceilings.com/capabilities  
See more photos at:  
armstrongceilings.com/photogallery

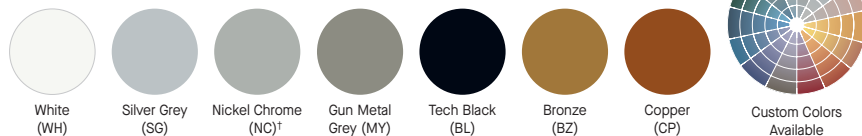
MetalWorks™ Mesh panels provide an industrial look for interior spaces in a variety of sizes, patterns, and finishes.

### KEY SELECTION ATTRIBUTES

- Large format 24" x 48", 24" x 72", and 24" x 96" lay-in ceiling panels now available as standard items in select patterns
- Thirty-two standard patterns on 24" x 24" ceiling panels, custom patterns and colors also available
- CleanAssure™ family of products – includes disinfectable panels, suspension systems, and trim
- Select products included in the FAST134 program – ready to ship in 4 weeks or less
- Simple installation – panels lay in standard 15/16" suspension system with borders or finished edges
- Factory-engineered border around panel edges for safe, fast installation into grid system
- Black acoustical infill panels provide high sound absorption and help conceal elements in the plenum
- For custom options contact ASQuote@armstrongceilings.com

### MESH FINISHES

#### Powder Coated

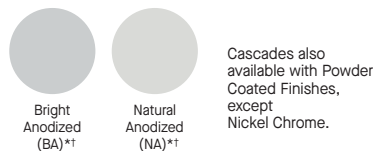


Due to printing limitations, shade may vary from actual product.

\* Only available on 24" x 24" panels

† Not available as a coordinating suspension system color

#### Anodized for Cascades



Cascades also available with Powder Coated Finishes, except Nickel Chrome.

#### Plated Antique Nickel



Antique Nickel finish reflects the light with a beautiful true metallic finish. Not available on Expanded Metal or Cascades. Finish will have shade variation depending on viewing angle. Black grid recommended.

### COORDINATING SUSPENSION SYSTEM COLORS



NOTE: Accessories and clips (such as BERC2 clip) can be specified to color match the suspension system.

\*\*\* Not available as a standard option.

Mesh patterns leave suspension system visible.  
When mill-finish steel is not a desired look, request 360-painted grid.

# METALWORKS™ Mesh

## Lay-in & Tegular

**LEED WELL™ LBC**

UP TO **85% RECYCLED CONTENT**

For LEED contribution contact TechLine

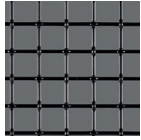
- energy management
- construction waste mgmt
- regional materials
- design for flexibility
- EPD
- recyclable/producer resp.
- biobased materials
- recycled content
- sourcing of raw materials
- material ingredient reporting
- low emitting materials
- lighting quality
- acoustics

LOCATION DEPENDENT

WITH INFILL PANEL

### WOVEN WIRE (1:6 scale shown)

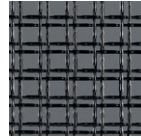
#### Square Weave – Square Lay-in



**1Cell**  
Item 6415AM  
Spacing: 0.86" x 0.86"  
Wire Diameter: 0.11"  
% Open Area: 76%



**2Cell**  
Item 6416AM  
Spacing: 1.39" x 1.39"  
Wire Diameter: 0.135"  
% Open Area: 82%



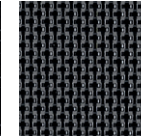
**Twin Round Narrow**  
Item 6129AM  
Spacing: 0.25"/0.57"  
0.25"/0.57"  
Wire Diameter: 0.80"  
% Open Area: 61%



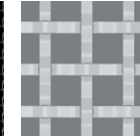
**Twin Flat Narrow**  
Item 6412AM  
Spacing: 0.25"/0.75"  
0.25"/0.75"  
Wire Diameter: 0.92"  
% Open Area: 53%



**Twin Flat Wide**  
Item 6410AM  
Spacing: 0.75"/2.25"  
0.75"/2.25"  
Wire Diameter: 0.375" x 0.60"  
% Open Area: 56%



**Single Flat Narrow**  
Item 6411AM  
Spacing: 0.25" x 0.25"  
Wire Diameter: 0.92"  
% Open Area: 21%



**Single Flat Wide**  
Item 8199AM  
Wire Dimension: 0.375" x 0.60"  
% Open Area: 51%

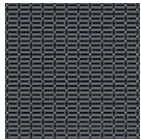


**Quad Round Narrow**  
Item 8198AM  
Wire Diameter: 0.135"  
% Open Area: 77%

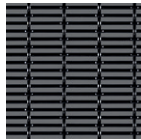


**Over-Under Square**  
Item 8200AM  
Wire Dimension: 0.250" x 0.063"  
% Open Area: 34%

#### Linear Weave – Square Lay-in



**Single Mini**  
Item 6413AM  
Spacing: 0.32" x 0.32"  
Wire Diameter: 0.63"  
% Open Area: 57%



**Single Narrow**  
Item 6414AM  
Spacing: 0.105"  
Wire Diameter: 1.105"  
% Open Area: 82%

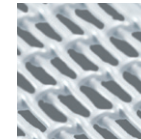


**Triple Narrow**  
Item 6128AM  
Spacing: 3.15" x 3.15"  
Wire Diameter: 0.12"  
% Open Area: 62%



**Fine Rectangular**  
Item 8203AM  
Wire Dimension: 0.80"  
% Open Area: 47%

#### Linear Weave – Tegular



**Fine Rectangular**  
Item 8195AM  
Wire Diameter: 0.80"  
% Open Area: 47%

#### Diamond Weave – Square Lay-in

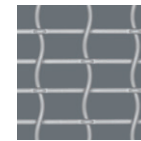


**1Diamond**  
Item 6417AM  
Spacing: 0.86" x 0.86"  
Wire Diameter: 0.11"  
% Open Area: 76%

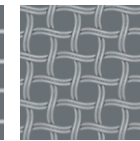


**2Diamond**  
Item 6418AM  
Spacing: 1.33" x 1.33"  
Wire Diameter: 0.14"  
% Open Area: 82%

#### Round Weave – Square Lay-in

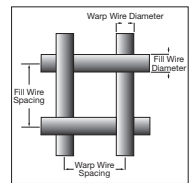


**Round Rectangular**  
Item 8201AM  
Wire Diameter: 0.105"  
% Open Area: 75%



**Twin Circle**  
Item 8202AM  
Wire Diameter: 0.80"  
% Open Area: 41%

#### Wire Key

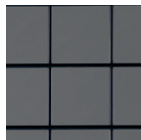


### WELDED WIRE (Actual 1:6 scale shown)

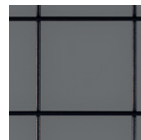
#### Welded Wire – Square Lay-in



**1Cell**  
Item 6131AM  
Spacing: 1.0" x 1.0"  
Wire Diameter: 0.120"  
% Open Area: 76%



**2Cell**  
Item 6132AM  
Spacing: 2.0" x 2.0"  
Wire Diameter: 0.120"  
% Open Area: 88%



**3Cell**  
Item 6133AM  
Spacing: 3.0" x 3.0"  
Wire Diameter: 0.120"  
% Open Area: 92%

#### Welded Wire – Tegular



**1Cell**  
Item 8190AM  
Wire Diameter: 0.120"/.312"  
Tegular Edge Rod  
% Open Area: 78%



**2Cell**  
Item 8191AM  
Wire Diameter: 0.120"/.312"  
Tegular Edge Rod  
% Open Area: 88%



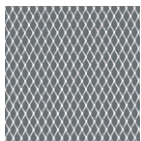
**Linear Channel**  
Item 8196AM  
Wire Diameter: 0.192"  
Wire Dimension: 0.044" Channel  
% Open Area: 50%



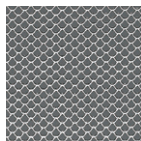
**Linear Channel with Center Hole**  
Item 8197AM  
Wire Diameter: 0.192"  
Wire Dimension: 0.044" Channel  
% Open Area: 60%

### EXPANDED METAL (Actual 1:6 scale shown)

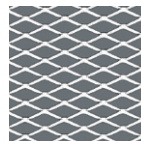
#### Expanded Metal – Square Lay-in



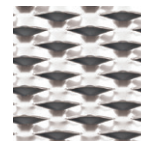
**Lattice**  
Item 6136AM  
Spacing: 0.036"  
% Open Area: 73%  
SWD 0.250"  
LWD 0.500"



**Scallops**  
Item 6137AM  
Spacing: 0.048"  
% Open Area: 61%  
SWD 0.295"  
LWD 0.394"

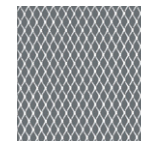


**Trellis**  
Item 6138AM  
Spacing: 0.060"  
% Open Area: 70%  
SWD 0.515"  
LWD 1.200"

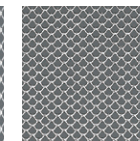


**Cascades**  
Item 6139AM  
Spacing: 0.080"  
% Open Area: 23%  
SWD 0.950"  
LWD 2.000"

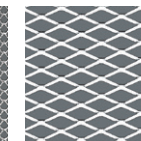
#### Expanded Metal – Tegular



**Lattice**  
Item 8192AM  
Wire Diameter: N/A  
% Open Area: 73%

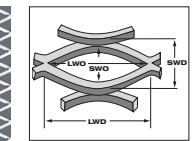


**Scallops**  
Item 8193AM  
Wire Diameter: N/A  
% Open Area: 61%



**Trellis**  
Item 8194AM  
Wire Diameter: N/A  
% Open Area: 70%

#### Expanded Metal Key



SWD – Short Way of Design  
LWD – Long Way of Design

For detailed pattern information including spacing wire diameters and open area, refer to the MetalWorks™ Mesh brochure.

TechLine 877 276-7876  
armstrongceilings.com/mesh

**Armstrong®**  
World Industries



METALWORKS™ – Standard

# METALWORKS™ Mesh

## Lay-in & Tegular

**LEED WELL LBC**  
UP TO **85% RECYCLED CONTENT**

energy management, waste mgmt, regional materials, design for flexibility, EPD, recyclable/extended producer resp., bio-based materials, recycled content, sourcing of raw materials, material ingredient reporting, low emitting materials, lighting quality, acoustics

For LEED contribution contact TechLine

LOCATION DEPENDENT

WITH INFILL PANEL

### VISUAL SELECTION

	Item No. ♦	Description	Panel Interior Opening Dimensions W x L x H (Inches)
WOVEN WIRE Square Weave Square Lay-in	6129AM __	Twin Round Narrow	24 × 24 × 1/4"
	6410AM __	Twin Flat Wide	24 × 24 × 1/4"
	6411AM __	Single Flat Narrow	24 × 24 × 1/4"
	6412AM __	Twin Flat Narrow	24 × 24 × 1/4"
	6415W24L24 __	1Cell	24 × 24 × 1/4"
	<b>new</b> 6415W24L48 __	1Cell	24 × 48 × 1/4"
	<b>new</b> 6415W24L72 __	1Cell	24 × 72 × 1/4"
	<b>new</b> 6415W24L96 __	1Cell	24 × 96 × 1/4"
	6416W24L24 __	2Cell	24 × 24 × 1/4"
	<b>new</b> 6416W24L48 __	2Cell	24 × 48 × 1/4"
	<b>new</b> 6416W24L72 __	2Cell	24 × 72 × 1/4"
	<b>new</b> 6416W24L96 __	2Cell	24 × 96 × 1/4"
	8199AM __	Single Flat Wide	24 × 24 × 1/4"
	8198AM __	Quad Round Narrow	24 × 24 × 1/4"
8200AM __	Over-Under Square	24 × 24 × 1/4"	
Linear Weave Square Lay-in	6413AM __	Single Mini	24 × 24 × 1/4"
	6414AM __	Single Narrow	24 × 24 × 1/4"
	6128AM __	Triple Narrow	24 × 24 × 1/4"
	8203AM __	Fine Rectangular	24 × 24 × 1/4"
Linear Weave Square Tegular	8195AM __	Fine Rectangular	24 × 24 × 1/4"
	6417AM __	1Diamond	24 × 24 × 1/4"
Diamond Weave Square Lay-in	6418AM __	2Diamond	24 × 24 × 1/4"
	8201AM __	Round Rectangular	24 × 24 × 1/4"
Round Weave Square Lay-in	8202AM __	Twin Circle	24 × 24 × 1/4"
	EXPANDED METAL Square Lay-in	6136W24L24 __	Lattice
<b>new</b> 6136W24L48 __		Lattice	24 × 48 × 1/4"
<b>new</b> 6136W24L72 __		Lattice	24 × 72 × 1/4"
<b>new</b> 6136W24L96 __		Lattice	24 × 96 × 1/4"
6137AM __		Scallops	24 × 24 × 1/4"
6138W24L24 __		Trellis	24 × 24 × 1/4"
<b>new</b> 6138W24L48 __		Trellis	24 × 48 × 1/4"
<b>new</b> 6138W24L72 __		Trellis	24 × 72 × 1/4"
<b>new</b> 6138W24L96 __		Trellis	24 × 96 × 1/4"
6139AM __		Cascades	24 × 24 × 1/4"
Square Tegular	8192AM __	Lattice	24 × 24 × 1/4"
	8193AM __	Scallops	24 × 24 × 1/4"
	8194AM __	Trellis	24 × 24 × 1/4"

### PERFORMANCE

Dots represent high level of performance.

% Open Area	Fire Rating	CleanAssure™ Disinfectable Panels		
		Fog	Spray	Wipe
61%	Class A	*	*	*
56%	Class A	*	*	*
21%	Class A	*	*	*
53%	Class A	*	*	*
76%	Class A	*	*	*
76%	Class A	*	*	*
76%	Class A	*	*	*
76%	Class A	*	*	*
82%	Class A	*	*	*
82%	Class A	*	*	*
82%	Class A	*	*	*
82%	Class A	*	*	*
51%	Class A	*	*	*
77%	Class A	*	*	*
34%	Class A	*	*	*
57%	Class A	*	*	*
52%	Class A	*	*	*
62%	Class A	*	*	*
47%	Class A	*	*	*
47%	Class A	*	*	*
76%	Class A	*	*	*
82%	Class A	*	*	*
75%	Class A	*	*	*
41%	Class A	*	*	*
73%	Class A	*	*	*
73%	Class A	*	*	*
73%	Class A	*	*	*
73%	Class A	*	*	*
61%	Class A	*	*	*
70%	Class A	*	*	*
70%	Class A	*	*	*
70%	Class A	*	*	*
70%	Class A	*	*	*
23%	Class A	*	*	*
73%	Class A	*	*	*
61%	Class A	*	*	*
70%	Class A	*	*	*

### ACOUSTICAL INFORMATION

Patterns with similar open area will achieve similar acoustic results.

% Open Area	Infill Panel Item No.	Dimensions	NRC
21% Open Area	5823	24" x 24"	0.75
	1713BL	24" x 24"	0.70
	2820BK	24" x 24"	0.85
	2821BK	24" x 48"	0.85
	2864BK	24" x 72"	0.85
53% Open Area	5823	24" x 24"	0.75
	1713BL	24" x 24"	0.70
	2820BK	24" x 24"	0.85
	2821BK	24" x 48"	0.85
	2864BK	24" x 72"	0.85
76% Open Area	5823	24" x 24"	0.75
	1713BL	24" x 24"	0.70
	2820BK	24" x 24"	0.85
	2821BK	24" x 48"	0.85
	2864BK	24" x 72"	0.85

### ACOUSTICAL PANEL INSTALLATION



MetalWorks™ Mesh ceiling panel with Calla® 2820BK infill panel for high NRC performance

♦ When specifying or ordering, include the appropriate 2-letter color suffix with the item number (e.g., 6129AM SQ).

METALWORKS™ - Standard





# METALWORKS™ Mesh

## Lay-in & Tegular

LEED® WELL | LBC

UP TO 85% RECYCLED CONTENT









For LEED contribution contact TechLine

energy management  
construction waste mgmt  
regional materials  
design for flexibility  
EPD  
recyclable/producer resp.  
biobased materials  
recycled content  
sourcing of raw materials  
material ingredient reporting  
low emitting materials  
lighting quality  
acoustics

LOCATION DEPENDENT

WITH INFILL PANEL

### VISUAL SELECTION

	Item No. ♦	Description	Panel Interior Opening Dimensions W x L x H (Inches)
WELDED WIRE Square Lay-in 	6131W24L24__	1Cell	24 x 24 x 1/4"
	 6131W24L48__	1Cell	24 x 48 x 1/4"
	 6131W24L72__	1Cell	24 x 72 x 1/4"
	 6131W24L96__	1Cell	24 x 96 x 1/4"
	6132W24L24__	2Cell	24 x 24 x 1/4"
	 6132W24L48__	2Cell	24 x 48 x 1/4"
	 6132W24L72__	2Cell	24 x 72 x 1/4"
	 6132W24L96__	2Cell	24 x 96 x 1/4"
	6133AM__	3Cell	24 x 24 x 1/4"
	Square Tegular 	8190AM__	1Cell
8191AM__		2Cell	24 x 24 x 1/4"
8196AM__		Linear Channeled	24 x 24 x 1/4"
8197AM__		Linear Channeled - Center Hole	24 x 24 x 1/4"

**FAST**  
4 WEEKS  
or Less

FAST134 program items ready to ship from manufacturer in 4 weeks or less. Up-to-date lead times and product options (sizes and colors) at [armstrongceilings.com/fast134](http://armstrongceilings.com/fast134).

♦ When specifying or ordering, include the appropriate 2-letter color suffix with the item number (e.g., 6129AM S G).  
SWD = Short way of design LWD = Long way of design  
NOTE: For acoustical infill panel information, see [armstrongceilings.com/mwaccessories](http://armstrongceilings.com/mwaccessories)

### SUSPENSION SYSTEMS



### PHYSICAL DATA

**Material**  
All items, except Cascades panels, are cold-rolled steel. Cascades panels are made of aluminum.

**Surface Finish**  
All panels are available in a range of standard and custom smooth, factory-applied powder-coated finishes. Most panels can also be plated for an Antique Nickel finish which will have a variable patina for an authentic aged visual. The anodized finishes (BA, NA) are available on Cascades panels only.

**Fire Performance**  
Class A: ASTM E84 and CAN/ULC S102. Flame Spread Index 25 or less. Smoke Developed Index 50 or less.  
All MetalWorks™ Mesh panels are non-combustible.

As with other architectural features located at the ceiling, Mesh panels may obstruct or skew the planned fire sprinkler water distribution pattern, or possibly delay or accelerate the activation of the sprinkler or fire detection systems by channeling the heat from a fire either toward or away from the device.

For panels that do not meet the criteria for open-suspension a 24" x 24" mineral fiber panel should be placed on the back of the Mesh panel when installing the ceiling, with the sprinkler installed below both panels.

Designers and installers are advised to consult a fire protection engineer, NFPA 13, and local codes for guidance where automatic fire detection and suppression systems are present.

**Acoustics Considerations**  
NRC-tested using white infill panels. Painted panels may experience a slight reduction in NRC due to color painting processes.

**Design Considerations**  
Minimal deflection is expected as panels increase in size. It is possible to see up to 1/2" deflection on Welded and Woven patterns. Panels in Expanded patterns may show additional deflection, resulting in an enhanced industrial visual.

For more open MetalWorks™ Mesh items where the suspension system may be visible through the panels, consider using a 360° Painted Grid System coordinated with the panel color.

Item 8196 should not be field cut. Use Item 8197, with 5" center hole, for sprinklers, lighting, and other mechanicals. Additionally, care should always be taken when cutting metal. Please see installation instructions for specific guidance on each type of mesh panel.

**Installation Considerations**  
For panels over 60" in length, stabilizer bars and hold down clips are required. For custom design assistance contact ASQuote@armstrongceilings.com

The edges of MetalWorks™ Mesh panels feature unique detailing. Use caution and wear appropriate hand and eye protection when installing or cutting these metal panels. Refer to Installation Instructions BPLA-297075 at [armstrongceilings.com/metalworks](http://armstrongceilings.com/metalworks) for details and cutting recommendations.

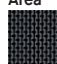

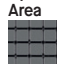
**Cleaning and Disinfecting**  
Cleaning and CDC approved disinfecting options available on [armstrongceilings.com/cleaning](http://armstrongceilings.com/cleaning)

**FAST134 Program Considerations**  
Size of Job Matters: Big jobs, over 2500 SF or 50 pieces for shapes/vertical elements will have longer lead times.  
Location Matters: Transit time not included. We are ready to ship in 1 week on FAST1 items. However, transit to the states west of Wyoming may add time.  
Distributor Truck Schedule Matters: We rely on distribution to help move products around the country. When speed matters, work with your local distributor to ensure FAST134 service.

### ACOUSTICAL INFORMATION

Dots represent high level of performance.

Patterns with similar open area will achieve similar acoustic results.

% Open Area	Infill Panel Item No.	Dimensions	NRC
21% Open Area 	Single Flat Narrow	5823	24" x 24" 0.75
		1713BL	24" x 24" 0.70
		2820BK	24" x 24" 0.85
		2821BK	24" x 48" 0.85
	2864BK	24" x 72" 0.85	
53% Open Area 	Twin Flat Narrow	5823	24" x 24" 0.75
		1713BL	24" x 24" 0.70
		2820BK	24" x 24" 0.85
		2821BK	24" x 48" 0.85
	2864BK	24" x 72" 0.85	
76% Open Area 	1Cell	5823	24" x 24" 0.75
		1713BL	24" x 24" 0.70
		2820BK	24" x 24" 0.85
		2821BK	24" x 48" 0.85
	2864BK	24" x 72" 0.85	

### STABILIZER BAR & HOLD DOWN CLIPS

Required for all panels greater than 60" in length

Item No.	Description	Pieces/Carton
7425	Stabilizer Bar	100
CHDC	Clear Hold Down Clips	50
FHDC	Black Hold Down Clips	1000

Stock vs Made-to-Order Matters: FAST3 & FAST4 items are made-to-order and will ship direct to distributor. FAST1 (stocked items) will go through distribution and depend on distributor truck schedules.

**Warranty**  
Details at [armstrongceilings.com/warranty](http://armstrongceilings.com/warranty)

**Weight/Panel (Bulk Packed)**

6411 - 8.2 lbs/pc	6136W24L24 - 2.6 lbs/pc
6413 - 5.1 lbs/pc	6136W24L48 - 5.2 lbs/pc
6414 - 6.9 lbs/pc	6136W24L72 - 7.7 lbs/pc
6415W24L24 - 3.85 lbs/pc	6136W24L96 - 5.2 lbs/pc
6415W24L48 - 7.7 lbs/pc	6138W24L24 - 1.55 lbs/pc
6415W24L72 - 11.4 lbs/pc	6138W24L48 - 3.1 lbs/pc
6415W24L96 - 15.1 lbs/pc	6138W24L72 - 4.5 lbs/pc
6416W24L24 - 1.95 lbs/pc	6138W24L96 - 10 lbs/pc
6416W24L48 - 3.9 lbs/pc	6412AM - 4.8 lbs/pc
6416W24L72 - 10.7 lbs/pc	6137AM - 2.8 lbs/pc
6416W24L96 - 14.1 lbs/pc	6139AM - 2.1 lbs/pc
6417 - 3.3 lbs/pc	8190AM - 4.4 lbs/pc
6418 - 3.2 lbs/pc	8191AM - 3.2 lbs/pc
6128AM - 4.2 lbs/pc	8192AM - 1.9 lbs/pc
6129AM - 6 lbs/pc	8193AM - 2.3 lbs/pc
6131W24L24 - 3.55 lbs/pc	8194AM - 3.0 lbs/pc
6131W24L48 - 7.1 lbs/pc	8196AM - 7.9 lbs/pc
6131W24L72 - 10.9 lbs/pc	8197AM - 7.3 lbs/pc
6131W24L96 - 14.6 lbs/pc	8198AM - 4.8 lbs/pc
6132W24L24 - 1.95 lbs/pc	8199AM - 6.5 lbs/pc
6132W24L48 - 3.9 lbs/pc	8200AM - 8.1 lbs/pc
6132W24L72 - 5.8 lbs/pc	8195AM - 6.8 lbs/pc
6132W24L96 - 7.7 lbs/pc	8203AM - 7.0 lbs/pc
6133AM - 1.6 lbs/pc	8201AM - 4.5 lbs/pc
6410AM - 4.8 lbs/pc	8202AM - 7.7 lbs/pc

**Minimum Order Quantity**  
24" x 24" panels - 100 SF  
all other sizes - 500 SF

TechLine / 1 877 276-7876  
[armstrongceilings.com/mesh](http://armstrongceilings.com/mesh)  
BPCS-5114-423

LEED® is a registered trademark of the U.S. Green Building Council; Living Building Challenge® (LBC) is a registered trademark of the International Living Future Institute; WELL™ and WELL Building Standard™ are trademarks of the International WELL Building Institute; Revit® is a registered trademark of Autodesk, Inc.; all other trademarks used herein are the property of AWI Licensing LLC and/or its affiliates © 2023 AWI Licensing LLC

**Armstrong®**  
World Industries

METALWORKS™ - Standard