

WOODWORKS® Open Cell

Vector Edge



**TOTAL
ACOUSTICS®**
Sound Absorption (NRC)
+ Sound Blocking (CAC)



SUSTAIN®
High Performance
Sustainable
Ceiling Systems

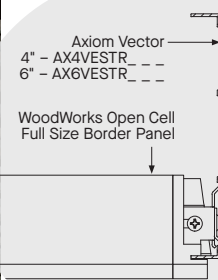


FAST134
Select Items Ship Fast
armstrongceilings.com/fast134



WoodWorks Open Cell 24" x 48" panels in Carbon Grey, wall-to-wall installation

CAD/Revit® drawings at:
armstrongceilings.com/cadrevit



A decorative, solid wood ceiling that is 100% accessible.

KEY SELECTION ATTRIBUTES

new

new

- Standard finishes on solid poplar are tinted to replicate naturally occurring wood tones
- Panels are part of the Sustain® portfolio and meet the most stringent industry sustainability compliance standards today
- FSC® certified wood available as a premium quoted option

new

- The natural warmth of wood can contribute to biophilic designs and building certification standards like the WELL™ v2 "Nature and Place" feature
- Get total noise control and design flexibility with Total Acoustics® ceiling panels: NRC + CAC = Total Acoustics
- Enhance space volume with open-structure design

- Mix panel sizes for a variety of looks
- Select products included in the FAST134 program – ready to ship in 4 weeks or less
- Vector edge detail provides safe and secure downward accessibility without tools and narrow reveal visual (1/4")
- Suspension system, trim, and accessories designed and tested to work with WoodWorks® Open Cell panels

- CleanAssure™ family of products – includes disinfectable panels, suspension systems, and trim
- Made in the U.S.A. of domestic and global content
- Build America, Buy America (BABA) Act compliant

WOODWORKS® Open Cell Vector Edge



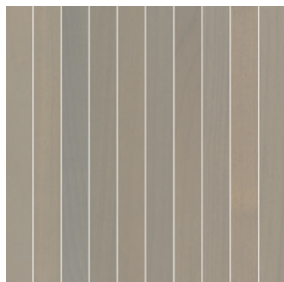
LEED® WELL | LBC

energy management	construction waste mgmt	regional materials	design for flexibility	EPD	recyclable/extended producer resp.	biobased materials	FSC® (for wood)	recycled content	sourcing of raw materials	material ingredient reporting	low emitting materials	lighting quality	acoustics
LOCATION DEPENDENT					PREMIUM OPTION					WITH INFILL PANEL			

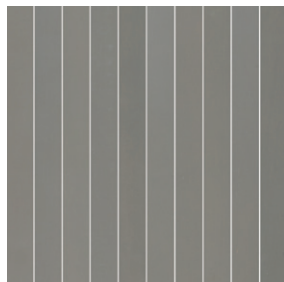
For LEED contribution contact TechLine

FINISH RANGES ON SOLID POPLAR

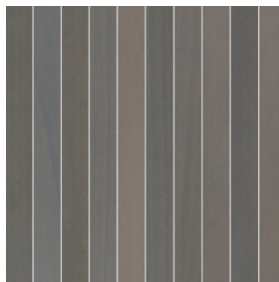
Our tinted finishes allow the natural character of the poplar to shine through. The images here reflect the visual range that is likely within our product. Installers will want to lay out panels before installing to achieve preferred aesthetic.



Bleached Grey (GBG)



Classic Grey (GCG)



Carbon Grey (GCB)



Rich Mahogany (GRY)



Antique Oak (GAO)



Red Oak (GRK)



English Chestnut (GEC)



Golden Maple (GGM)



Natural Walnut (GWN)

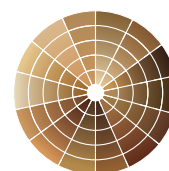


Warm Oak (GWO)



Forest Walnut (GFW)

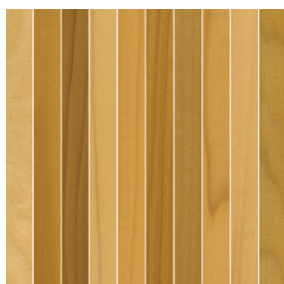
CUSTOM FINISHES



Custom Wood Species and Finishes Available

Panel backers are black. Made-to-order, custom backer colors available.

LEGACY FINISHES



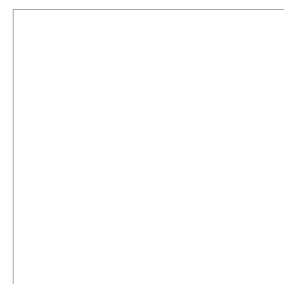
Maple (GMP)



Light Cherry (GLC)



Dark Cherry (GDC)



White (GWH)*

Due to printing limitations, shade may vary from actual product.
* Painted White finish is not included in the Sustain® portfolio.



WOODWORKS® Open Cell Vector Edge



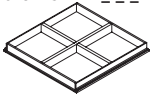
For LEED contribution contact TechLine

energy management	construction waste mgmt	regional materials	design for flexibility	EPD	recyclable/extended producer resp.	biobased materials	FSC® (for wood)	recycled content	sourcing of raw materials	material ingredient reporting	low emitting materials	lighting quality	acoustics
✓	✓	✓	✓	✓	✓	✓	✓	✓	✓	✓	✓	✓	✓
LOCATION DEPENDENT				PREMIUM OPTION				WITH INFILL PANEL					

VISUAL SELECTION

PERFORMANCE

ACOUSTICAL INFORMATION

Item No. ◆	Description	Dimensions Nominal W x L x H (Inches) Custom Sizes Available	% Open Area	LBS/SF
WOODWORKS® Open Cell 1/4" Reveal with 15/16" Vector		24 x 24 x 2-1/4"	80%	0.68
6734F51L2D1_	Four Square with 12" Cells	24 x 24 x 2-1/4"	80%	0.68
6734F51L2D2_	Multi-Square with 6" Cells	24 x 24 x 2-1/4"	69%	1.4
6734F51L2D3_	Linear with 6" Cells	24 x 24 x 2-1/4"	77%	0.88
6734F51L4D4_	Four Square with 12" Cells	24 x 48 x 2-1/4"	85%	1.18
6734F51L4D2_	Multi-Square with 6" Cells	24 x 48 x 2-1/4"	73%	1.34

CleanAssure™ Disinfectable Panels		
Fog	Spray	Wipe
•	•	•
•	•	•
•	•	•
•	•	•
•	•	•

Infill Panel Item No.	NRC	+	CAC	=	Total Acoustics¹
2820BL	0.85	+	35	=	BEST
1713BL	0.70	+	35	=	BETTER
1318	0.75	+	30	=	-
5823	0.75	+	N/A	=	-

¹ Total Acoustics® ceiling panels have an ideal combination of sound absorption and sound blocking in one product.
GOOD (NRC 0.60-0.65; CAC 35+)
BETTER (NRC 0.70-0.75; CAC 35+)
BEST (NRC 0.80+; CAC 35+)

FAST
4 WEEKS
or Less

FAST134 program items ready to ship from manufacturer in 4 weeks or less.
Up-to-date lead times and product options (sizes and colors) at armstrongceilings.com/fast134

◆ When specifying or ordering, include the appropriate 3-letter color suffix (e.g., 6734F51L2D1 G M P).
NOTE: For additional color and size options available as special order, call TechLine at 1 877 276-7876.

ACCESSORIES armstrongceilings.com/wwaccessories

	Item No. ◆	Description	Dimensions Nominal W x L x H (inches)	Color	PCS/CTN
Suspension Systems	7301BL	Prelude® XL® 12" HD Main Beam	15/16 x 144 x 1-11/16"	Black	20
	XL7341BL	Prelude XL 4" Cross Tee	15/16 x 48 x 1-11/16"	Black	60
	XL8320BL	Prelude XL 2" Cross Tee	15/16 x 24 x 1-11/16"	Black	60
	7800BL	Angle Wall Molding	7/8 x 144 x 7/8"	Black	30
Accessories	BERC2	Beam End Retaining Clip	N/A	Mill Finish	200
	CHDC	Clear Hold Down Clip	N/A	Clear	50
Acoustical Infill Panels	2820BK	Calla® Square Lay-in Panel	24 x 24 x 7/8"	Black	10
	1713BL	School Zone® Fine Fissured™ Square Lay-in Panel	24 x 24 x 3/4"	Black	12
	1318	Backstage Noir® Square Lay-in Panel	24 x 24 x 3/4"	Black	12
	5823	BioAcoustic™ Infill Panel	24 x 24 x 5/8"	Black Matte	12
Perimeter Trim	7239	Adjustable Trim Clip	N/A	Mill Finish	1
	7146H4L96_ _ _	4" Solid Wood Trim with 4 Clips	3/4 x 96 x 4"	All Finishes	1
	7146H6L96_ _ _	6" Solid Wood Trim with 4 Clips	3/4 x 96 x 6"	All Finishes	1
	5925	Adjustable Trim Clip	N/A	Mill Finish	25
	AX_VESTR_ _ _	Axiom® Vector Straight Trim - Recommend in Black 6" and up	N/A	Silver Grey, Black, Gun Metal	10 LF

◆ When specifying or ordering please include the 3-letter color suffix that coordinates with your WoodWorks ceiling: (e.g., 5457GAL1 G B Q).

TechLine 877 276-7876
armstrongceilings.com/woodworksopencell

Armstrong®
World Industries

WOODWORKS® Open Cell Vector Edge

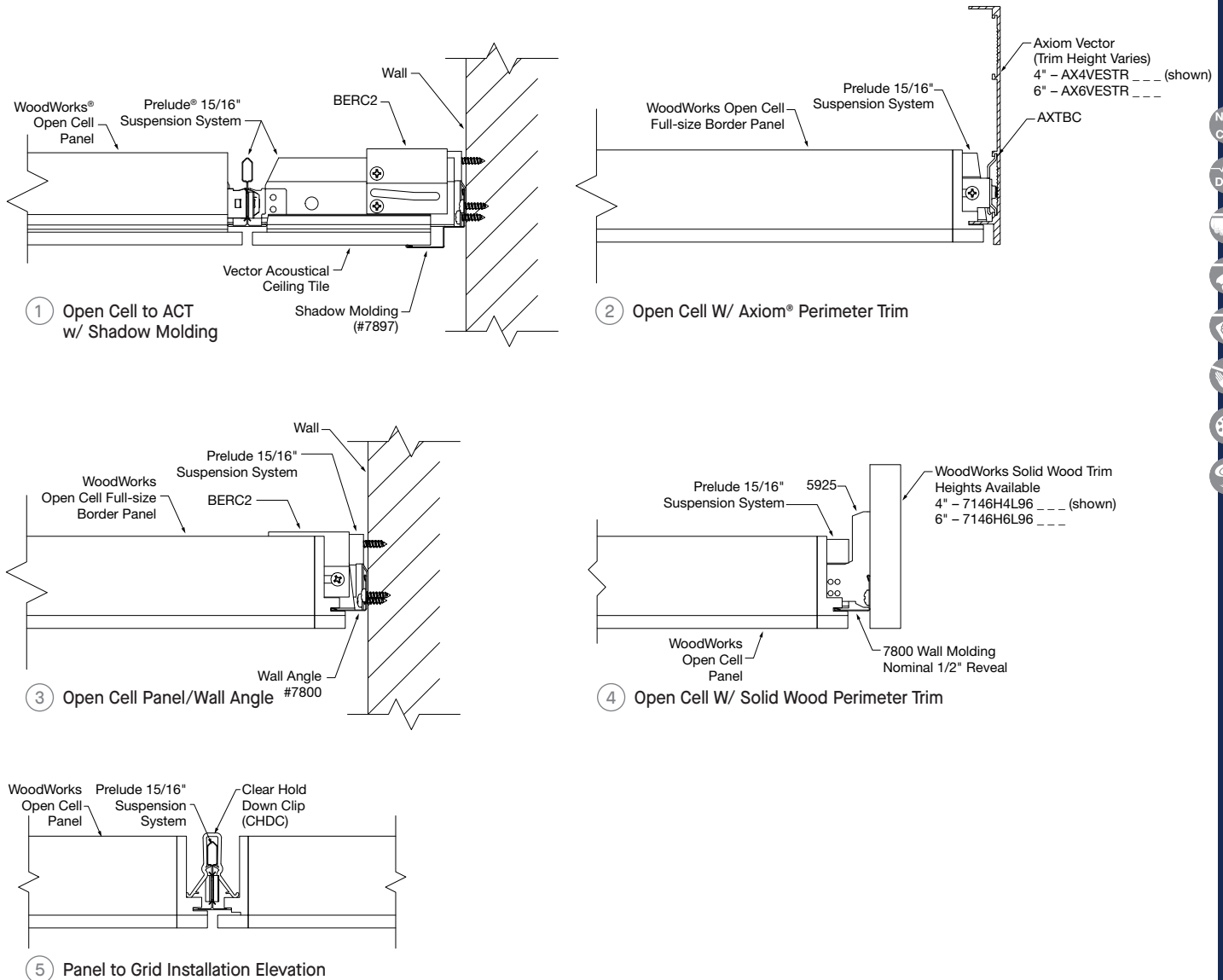


LEED® WELL | LBC

energy management	construction waste mgmt	regional materials	design for flexibility	EPD	recyclable/extended producer resp.	biobased materials	FSC® (for wood)	recycled content	sourcing of raw materials	material ingredient reporting	low emitting materials	lighting quality	acoustics
LOCATION DEPENDENT					PREMIUM OPTION					WITH INFILL PANEL			

For LEED contribution contact TechLine

SYSTEM INSTALLATION DETAILS



PHYSICAL DATA

Material

Solid wood (poplar)

Surface Finish

Clear or tinted semi-gloss coating.

Fire Performance

Solid Poplar Hardwood – Class C ASTM E84 surface burning characteristics. Flame Spread Index 200 or less. Smoke Developed Index 450 or less.

Flame stop coating is available as a custom option. Contact ASQuote@armstrongceilings.com for details.

WoodWorks® Open Cell panels, as with other architectural features located at the ceiling, may obstruct or skew the planned fire sprinkler water distribution pattern, or possibly delay or accelerate the activation of the sprinkler or fire detection systems by channeling heat from a fire either toward or away from the device.

Designers and installers are advised to consult a fire-protection engineer, NFPA 13, and local codes for guidance where automatic fire detection and suppression systems are present. For more information, visit armstrongceilings.com/woodworks

Application Considerations

Variation among panels may occur due to the natural characteristics of the wood and grain.

Design Considerations

It is very important that WoodWorks panels are climatized prior to installation. Relative humidity between 25% and 55%, and temperatures between 50°F and 86°F, must be maintained. Exposed, unpainted back of Axiom® trim may be visible when using higher trims on full-size panel installation only.

Installation Consideration

Do not cut panels.

Seismic Restraint

WoodWorks Open Cell panels have been engineered, tested, and approved for application in all seismic areas when installed per Armstrong Ceilings installation instructions.

Design & Pre-Construction Service

For complimentary design and pre-construction assistance, contact ProjectWorks® or visit armstrongceilings.com/projectworks

Cleaning and Disinfecting

Cleaning and CDC-approved disinfecting options available on armstrongceilings.com/cleaning

FAST134 Program Considerations

Size of Job Matters: Big jobs, over 2,500 SF or 50 pieces for shapes/vertical elements will have longer lead times.

Location Matters: Transit time not included. We are ready to ship in 1 week on FAST1 items. However, transit to the states west of Wyoming may add time.

Distributor Truck Schedule Matters: We rely on distribution to help move products around the country. When speed matters, work with your local distributor to ensure FAST134 service.

Stock vs. Made-to-Order Matters: FAST3 & FAST4 items are made-to-order and will ship direct to distributor. FAST1 (stocked items) will go through distribution and depend on distributor truck schedules.

Warranty

Details at armstrongceilings.com/warranty

Weight (Bulk Packaged)

Refer to visual selection chart.