

WOODWORKS®

Tegular



**TOTAL
ACOUSTICS®**
Sound Absorption (NRC)
+ Sound Blocking (CAC)



FAST134
Select Items Ship Fast
armstrongceilings.com/fast134



CAD/Revit® drawings at:
armstrongceilings.com/cadrevit

WoodWorks Tegular panels with W2 perforation in Constants™ Redux Wood Wheat and Suprafine® XL® suspension system in White

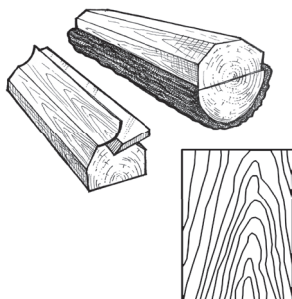
Now get Total Acoustics® performance with WoodWorks® Tegular perforated panels – excellent noise reduction and sound blocking in one system.

KEY SELECTION ATTRIBUTES

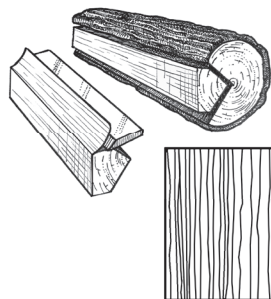
- Get total noise control and design flexibility with Total Acoustics® ceiling panels: NRC + CAC = Total Acoustics
- Standard veneers feature various species and cuts for beautiful wood visuals
- ASTM E84 Class A Fire Performance
- The natural warmth of wood can contribute to biophilic designs and building certification standards like the WELL™ v2 "Nature and Place" feature
- Create upturns for continuous visuals and clouds with WoodWorks® trim
- Select products included in the FAST134 program – ready to ship in 4 weeks or less
- Shorter lead times and lower cost than custom millwork
- USDA Biobased Content: 100%
- FSC® certified wood available as a premium quoted option
- CleanAssure™ family of products – includes disinfectable panels, suspension systems, and trim
- Made in the U.S.A. of domestic and global content
- Build America, Buy America (BABA) Act compliant

VENEER CUTS

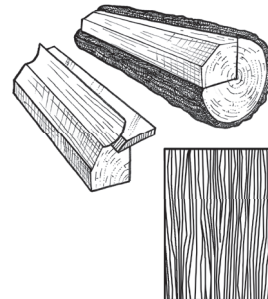
Different cuts of a log will yield different graining visuals. Choose your veneer to achieve your desired look.



Plain Sliced
Produces the well-known cathedral or loop-grain effect.



Quarter Sliced
Produces a striped, often straight-grain effect.



Rift Sliced
Produces a tight, linear grain along the entire length of the veneer.

FINISH RANGES

The carefully curated species and veneer cuts offer a beautiful natural variation. The images here reflect the visual range that is likely within our product. Darkest to lightest tones may occur within an installation due to the character of wood.

Plain Slice White Maple (NWM)

Plain Slice White Ash (NWA)



Vertical Grain Fir (NVF)



Rift White Oak (NRO)



Plain Slice White Oak (NOK)



Plain Slice Cherry (NPC)



Quartered Mahogany (NQM)



Quartered Sapele (NQS)

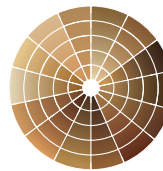


Quartered Walnut (NQW)



Plain Slice Walnut (NWN)

CUSTOM FINISHES



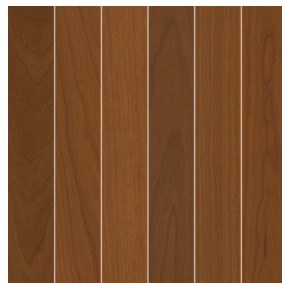
Custom Wood
Species and Finishes
Available

LEGACY VENEERS

Natural Variations™
Plain Slice



Maple (NMP)



Light Cherry (NLC)

Constants™
Vertical Grain



Walnut (CWA)



Redux Wood Wheat (CRW)

Due to printing limitations, shade may vary from actual product.

WOODWORKS®

Tegular

USDA
CERTIFIED
BIOBASED
PRODUCT
PRODUCT 100%LEED®
WELL™ LBC80% RECYCLED
CONTENT

For LEED contribution contact TechLine

✓	regional materials	✓	design for flexibility	✓	EPD	✓	recyclable/extended producer resp.	✓	biobased materials	✓	FSC® (for wood)	✓	recycled content	✓	sourcing of raw materials		material ingredient reporting		low emitting/ materials		lighting quality	✓	acoustics
LOCATION DEPENDENT																							
PREMIUM OPTION																							
WITH INFILL PANEL																							

VISUAL SELECTION

Edge Profile	Item No. ♦	Dimensions Nominal W x L x H (Inches)	Perforations
WOODWORKS® Tegular	5404F01_ _ _ _ _	24 x 24 x 3/4"	W1, W2, W3, W4, W5, W6
9/16" Square Tegular	6484F01_ _ _ _ _	12 x 48 x 3/4"	W1, W2, W3, W4, W5, W6
	6485F01_ _ _ _ _	12 x 72 x 3/4"	W1, W2, W3, W4, W5, W6
	6486F01_ _ _ _ _	24 x 48 x 3/4"	W1, W2, W3, W4, W5, W6
	6487F01_ _ _ _ _	24 x 72 x 3/4"	W1, W2, W3, W4, W5, W6
TechZone® Panels	6510F01_ _ _ _ _	24 x 42 x 3/4"	W1, W2, W4
	6511F01_ _ _ _ _	30 x 30 x 3/4"	W1, W2, W4
	6512F01_ _ _ _ _	27 x 30 x 3/4"	W1, W2, W4

FAST
4 WEEKS
or LessFAST134 program items ready to ship from manufacturer in 4 weeks or less.
Up-to-date lead times and product options (sizes and colors) at armstrongceilings.com/fast134

FSC® certified* WOODWORKS Tegular	5404F02_ _ _ _ _	24 x 24 x 3/4"	W1, W2, W3, W4, W5, W6	Class A	*	*	*
	6484F02_ _ _ _ _	12 x 48 x 3/4"	W1, W2, W3, W4, W5, W6	Class A	*	*	*
	6485F02_ _ _ _ _	12 x 72 x 3/4"	W1, W2, W3, W4, W5, W6	Class A	*	*	*
	6486F02_ _ _ _ _	24 x 48 x 3/4"	W1, W2, W3, W4, W5, W6	Class A	*	*	*
	6487F02_ _ _ _ _	24 x 72 x 3/4"	W1, W2, W3, W4, W5, W6	Class A	*	*	*
FSC-certified TechZone Panels	6510F02_ _ _ _ _	24 x 42 x 3/4"	W1, W2, W4	Class A	*	*	*
	6511F02_ _ _ _ _	30 x 30 x 3/4"	W1, W2, W4	Class A	*	*	*
	6512F02_ _ _ _ _	27 x 30 x 3/4"	W1, W2, W4	Class A	*	*	*

♦ When specifying or ordering, include the appropriate 2-digit perforation and 3-letter color suffixes.

* FSC-certified wood is a premium option available through ASQuote@armstrongceilings.com

NOTE: Items 6485 and 6487 (12" x 72" and 24" x 72" series) include suspension system stabilizer hooks.

Dots represent high level of performance.

PERFORMANCE

Fire Rating	CleanAssure™ Disinfectable Panels			
	Fog	Spray	Wipe	
Class A	*	*	*	
Class A	*	*	*	
Class A	*	*	*	
Class A	*	*	*	
Class A	*	*	*	
Class A	*	*	*	
Class A	*	*	*	

ACOUSTICAL INFORMATION

Perforation	Infill Panel Item No.	Description	NRC	CAC	Total Acoustics¹
W1		Unperforated	N/A	42	
W2		Round Straight			
	8200T10	Fiberglass	0.45	-	
	1713BL	School Zone® Fine Fissured™	0.55	39	
	2820BK	Calla®	0.55	37	
	5823	BioAcoustic™	0.40	24	
	5479	BioAcoustic	0.40	24	
	1318	Backstage Noir®	0.55	31	
W3		Round Diagonal			
	8200T10	Fiberglass	0.45	-	
	1713BL	School Zone Fine Fissured	0.55	39	
	2820BK	Calla	0.55	37	
	5823	BioAcoustic	0.40	24	
	5479	BioAcoustic	0.40	24	
	1318	Backstage Noir	0.55	31	
W4		Round Straight			
	8200T10	Fiberglass	0.60	-	
	1713BL	School Zone Fine Fissured	0.60	39	GOOD
	2820BK	Calla	0.65	37	GOOD
	5823	BioAcoustic	0.65	24	
	5479	BioAcoustic	0.65	24	
	1318	Backstage Noir	0.60	31	
W5		Oval Straight Slotted			
	8200T10	Fiberglass	0.50	-	
	1713BL	School Zone Fine Fissured	0.50	39	
	2820BK	Calla	0.55	37	
	5823	BioAcoustic	0.45	24	
	5479	BioAcoustic	0.45	24	
	1318	Backstage Noir	0.55	31	
W6		Oval Straight Slotted			
	8200T10	Fiberglass	0.40	-	
	1713BL	School Zone Fine Fissured	0.35	39	
	2820BK	Calla	0.35	37	
	5823	BioAcoustic	0.45	24	
	5479	BioAcoustic	0.45	24	
	1318	Backstage Noir	0.35	31	

¹ Total Acoustics® ceiling panels have an ideal combination of sound absorption and sound blocking in one product.

GOOD (NRC 0.60-0.65; CAC 35+)

BETTER (NRC 0.70-0.75; CAC 35+)

BEST (NRC 0.80+; CAC 35+)

EXAMPLE:

5404 F02 W2 NWM

Panel Dimension/Type: 24" x 24"
Substrate: FSC-certified
Perforation: W2 Round Straight
Finish: Plain Slice White Maple

STANDARD PERFORATION OPTIONS (Actual 1:6 scale shown)

W1 (Unperforated)	W2 - Rg 6006 (Round Straight)	W3 - Rd 6006 (Round Diagonal)	W4 - Rg 6011 (Round Straight)	W5 - Lg 9512 (Oval Straight Slotted)	W6 - Lg 9508 (Oval Straight Slotted)

NOTE: Slotted perforations run parallel to the length of the panel and borders vary with panel size.

TechLine 877 276-7876

armstrongceilings.com/woodworksCustom
Perforations
AvailableArmstrong®
World Industries

ACCESSORIES

	Item No. ◆	Description	Dimensions Nominal W x L x H (Inches)	Color	PCS/ CTN
Suspension Systems	7501BL	Suprafine® XL® 12' Heavy Duty Main Beam	9/16 x 144 x 1-11/16"	White	20
	XL7549	Suprafine 4' Cross Tee	9/16 x 48 x 1-11/16"	White	60
	XL7520	Suprafine 2' Cross Tee	9/16 x 24 x 1-11/16"	White	60
	7804BL	Angle Molding (recommended with wood trims)	7/8 x 144 x 9/16"	White	30
	7891	12-Gauge Hanger Wire	144" Length	N/A	N/A
Accessories	6091	Safety Cable	N/A	N/A	50
	6408 _ _ _	3/4" Edgebanding	3/4" x 300"	All Veneers	N/A
Infill Panels	1713BL	Fine Fissured™ Lay-in Panel	24 x 24 x 3/4"	Tech Black	14
	2820BK	Calla® Lay-in Panel	24 x 24 x 1"	Black	10
	5479	BioAcoustic™ Infill Panel	24 x 24 x 5/8"	Beige Matte	12
	1318	Backstage Noir® Square Lay-in Panel	24 x 24 x 3/4"	Black	12
	5823	BioAcoustic Infill Panel	24 x 24 x 5/8"	Black Matte	12
	8200T10	Fiberglass Infill Panel	24 x 24 x 1"	Black Gloss	12
Perimeter Trim	5415F01W1H4 _ _ _	4" WoodWorks® Vector®/Tegular Trim with 4 clips (Item 5925)	4 x 96 x 3/4"	All Veneers	4
	5415F01W1H6 _ _ _	6" WoodWorks Vector®/Tegular Trim with 4 clips (Item 5925)	6 x 96 x 3/4"	All Veneers	4
	5925	WoodWorks Trim Clips	N/A	N/A	1 (25 PC minimum order quantity)
	7239	Adjustable Trim Clip	N/A	Mill Finish	50
	AX _ VESTR _ _ _	Axiom® Vector Straight Trim	N/A	Silver Grey, Black, 10 LF Gun Metal	
	AX _ VECUR _ _ _	Axiom Vector Curved Trim	N/A	Silver Grey, Black, 10 LF Gun Metal	
FSC® certified Premium Trim*	5415F02W1H4 _ _ _	4" WoodWorks Vector®/Tegular Trim with 4 clips (Item 5925)	4 x 96 x 3/4"	All Veneers	4
	5415F02W1H6 _ _ _	6" WoodWorks Vector®/Tegular Trim with 4 clips (Item 5925)	6 x 96 x 3/4"	All Veneers	4

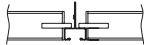
◆ When specifying or ordering, include the 3-digit color suffix that coordinates with your WoodWorks ceiling: (e.g. 5415F01W1H4 **N M P**)
* FSC-certified wood is a premium option available through ASQuote@armstrongceilings.com.



Axiom Trim also available in multiple colors and profile sizes. For details, visit armstrongceilings.com/axiom

SUSPENSION SYSTEMS (Heavy-duty)

9/16"
Tegular



Silhouette® HD



Suprafine® HD



Interlude® XL® HRC HD

Suprafine suspension system is available in many standard colors. All other suspension systems are available in standard White only. Other colors available as special order.

PHYSICAL DATA

Material

Fire-rated particle board (FRPB) with real wood veneers.
Vertical Grain Fir (NVF) is FRPB with a reconstituted veneer.

Surface Finish

Clear or tinted semi-gloss coating

Fire Performance

Class A: ASTM E84 surface burning characteristics.
Flame Spread Index 25 or less. Smoke Developed Index 50 or less.

CAN/ULC S102 surface. Flame Spread Rating 25 or less. Smoke Developed Classification 50 or less.

Acoustical Performance

CAC testing conducted using Silhouette suspension system.

ASTM E1264 Classification

ASTM E1264 Type XX - Fire Class A

Primary (Embodied) Energy
See all LCA information on our EPDs.

Application Considerations

Variation among panels may occur due to the natural characteristics of the wood and grain.

It is very important that WoodWorks panels be climatized prior to installation. Relative humidity between 25% and 55%, and temperatures between 50°F and 86°F, must be maintained throughout the life of the product.

Design Considerations

Different panels should not be installed together. Perforated border on 24" x 72" panels are different than other panel sizes.

All perforated panels are standard with fleece attached. Panels without fleece must be specified.

Specification Consideration

Attention: For FSC-certified wood products to maintain their CoC certification, products must be sold to a CoC-certified distributor or directly to the installing contractor. Failure to do so breaks the CoC.

Installation Considerations

Due to panel weight, 24" x 48" and 24" x 72" panels require that the suspension system be attached to the back with safety cables attached. 12" x 72" and 24" x 72" panels require the use of suspension system stabilizer clips (which are included in the cartons).

Seismic Restraint

WoodWorks Tegular ceiling panels have been engineered, tested, and approved for application in all seismic areas when installed per Armstrong Ceilings installation instructions.

Cleaning and Disinfecting

Cleaning and CDC-approved disinfecting options available on armstrongceilings.com/cleaning

FAST134 Program Considerations

Size of Job Matters: Big jobs, over 2500 SF or 50 pieces for shapes/vertical elements will have longer lead times.

Location Matters: Transit time not included. We are ready to ship in 1 week on FAST1 items. However, transit to the states west of Wyoming may add time.

Distributor Truck Schedule Matters: We rely on distribution to help move products around the country. When speed matters, work with your local distributor to ensure FAST134 service.

Stock vs. Made-to-Order Matters: FAST3 & FAST4 items are made-to-order and will ship direct to distributor. FAST1 (stocked items) will go through distribution and depend on distributor truck schedules.

Warranty

Details at armstrongceilings.com/warranty

Weight; Square Feet

Panels - 2.75 LBS/SF