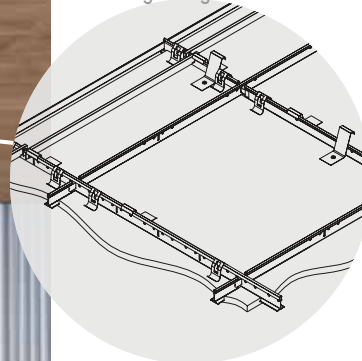




CAD/Revit® drawings at:
armstrongceilings.com/cadrevit



WoodWorks Vector 24" x 48" panels in Constants™ Walnut on heavy-duty Prelude® XL® 15/16" suspension system

Fully accessible wood panels are available in multiple options for acoustical and aesthetic needs.

KEY SELECTION ATTRIBUTES

- Vector® edge detail provides safe and secure downward accessibility without tools and narrow reveal visual (1/4")
- Standard veneers feature various species and cuts for beautiful wood visuals
- ASTM E84 Class A Fire Performance

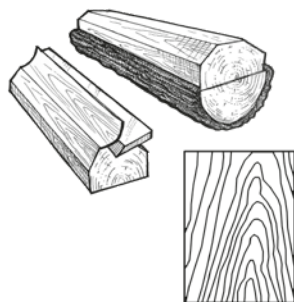
- The natural warmth of wood can contribute to biophilic designs and building certification standards like the WELL™ v2 "Nature and Place" feature
- Select products included in the FAST134 program – ready to ship in 4 weeks or less
- Create upturns for continuous visuals and clouds with WoodWorks® trim

- Acoustical fleece backing for improved sound absorption
- Installation with minimum plenum clearance
- Shorter lead times and lower cost than custom millwork
- CleanAssure™ family of products – includes disinfectable panels, suspension systems, and trim

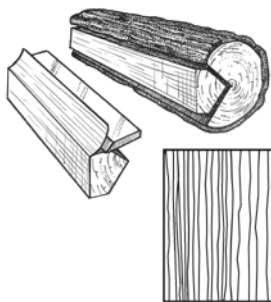
- USDA Biobased Content: 100%
- FSC® certified wood available as a premium quoted option (FSC® C007626)
- Made in the U.S.A. of domestic and global content
- Build America, Buy America (BABA) Act compliant

VENEER CUTS

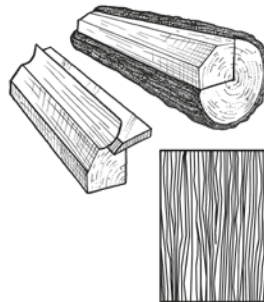
Different cuts of a log will yield different graining visuals. Choose your veneer to achieve your desired look.



Plain Sliced
Produces the well known cathedral or loop-grain effect.



Quarter Sliced
Produces a striped, often straight-grain effect.



Rift Sliced
Produces a tight, linear grain along the entire length of the veneer.

COMMON MATERIALS FRAMEWORK		Climate Health	EPD
Human Health		Ecosystem Health	EPD
		Circular Economy	✓
OCCUPANT EXPERIENCE		Acoustics	✓

FINISH RANGES

The carefully curated species and veneer cuts offer a beautiful natural variation. The images here reflect the visual range that is likely within our product. Darkest to lightest tones may occur within an installation due to the character of wood.



Plain Slice White Maple (NWM)



Plain Slice White Ash (NWA)



Vertical Grain Fir (NVF)



Rift White Oak (NRO)



Plain Slice White Oak (NOK)



Plain Slice Cherry (NPC)



Quartered Mahogany (NGM)



Quartered Sapele (NGS)



Quartered Walnut (NQW)



Plain Slice Walnut (NWN)

CUSTOM FINISHES



Custom Wood
Species and Finishes
Available

LEGACY VENEERS

Constants™
Vertical Grain



Walnut (CWA)



Redux Wood Wheat (CRW)

Due to printing limitations, shade may vary from actual product.



WOODWORKS®

Vector®

RECYCLED CONTENT

LEED V5

UP TO 80%

USDA CERTIFIED BIOBASED PRODUCT
PRODUCT 100%

COMMON MATERIALS FRAMEWORK	Climate Health	EPD
Human Health	Ecosystem Health	EPD
	Circular Economy	✓
OCCUPANT EXPERIENCE	Acoustics	✓

VISUAL SELECTION

Edge Profile	Item No. ◆	Dimensions Nominal W × L × H (Inches)	Perforations
WOODWORKS® Vector® 15/16" Vector 1/4" Reveal	5401F01_	24 × 24 × 3/4"	W1, W2, W3, W4, W5, W6
	6480F01_	12 × 48 × 3/4"	W1, W2, W3, W4, W5, W6
	6482F01_	24 × 48 × 3/4"	W1, W2, W3, W4, W5, W6

FAST
4 WEEKS
or Less

FAST134 program items ready to ship from manufacturer in 4 weeks or less. Up-to-date lead times and product options (sizes and colors) at armstrongceilings.com/fast134

FSC® certified WOODWORKS Vector 15/16" Vector 1/4" Reveal <th>Item No. ◆</th> <th>Dimensions Nominal W × L × H (Inches)</th> <th>Perforations</th> <th>Fire Rating</th> <th>Fog</th> <th>Spray</th> <th>Wipe</th>	Item No. ◆	Dimensions Nominal W × L × H (Inches)	Perforations	Fire Rating	Fog	Spray	Wipe
	5401F02_	24 × 24 × 3/4"	W1, W2, W3, W4, W5, W6	Class A	*	*	*
	6480F02_	12 × 48 × 3/4"	W1, W2, W3, W4, W5, W6	Class A	*	*	*
	6482F02_	24 × 48 × 3/4"	W1, W2, W3, W4, W5, W6	Class A	*	*	*

◆ When specifying or ordering, include the appropriate 2-digit perforation and 3-letter veneer suffixes. For veneers, sizes, and perforation patterns available as special order, call TechLine at 1 877 276-7876.

PERFORMANCE

Fire Rating	CleanAssure™ Disinfectable Panels		
	Fog	Spray	Wipe
Class A	*	*	*
Class A	*	*	*
Class A	*	*	*

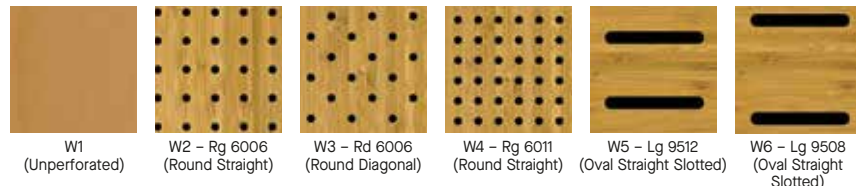
ACOUSTICAL INFORMATION

Dots represent high level of performance.

Perforation	Infill Panel Item No.	Description	NRC
W1 Unperforated			N/A
W2 Round Straight	8200T10 1713BL	Fiberglass School Zone® Fine Fissured™	0.45 0.55
	2820BK 5823	Calla® BioAcoustic™	0.55 0.40
	5479 1318	BioAcoustic Backstage Noir®	0.40 0.55
W3 Round Diagonal	8200T10 1713BL	Fiberglass School Zone® Fine Fissured	0.45 0.55
	2820BK 5823	Calla BioAcoustic	0.55 0.40
	5479 1318	BioAcoustic Backstage Noir	0.40 0.55
W4 Round Straight	8200T10 1713BL	Fiberglass School Zone® Fine Fissured	0.60 0.60
	2820BK 5823	Calla BioAcoustic	0.65 0.65
	5479 1318	BioAcoustic Backstage Noir	0.65 0.60
W5 Oval Straight Slotted	8200T10 1713BL	Fiberglass School Zone® Fine Fissured	0.50 0.50
	2820BK 5823	Calla BioAcoustic	0.55 0.45
	5479 1318	BioAcoustic Backstage Noir	0.45 0.55
W6 Oval Straight Slotted	8200T10 1713BL	Fiberglass School Zone® Fine Fissured	0.40 0.35
	2820BK 5823	Calla BioAcoustic	0.35 0.45
	5479 1318	BioAcoustic Backstage Noir	0.45 0.35

EXAMPLE: **5401 F02 W2 NWM**
 Panel Dimension/Type: 24" x 24"
 Substrate: FSC-certified
 Perforation: W2 Round Straight
 Finish: Plain Slice White Maple Fg 6006

PERFORATION OPTIONS (Actual 1:6 scale shown)



Custom Perforations Available

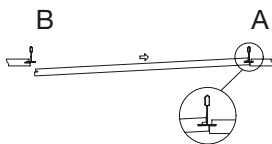
NOTE: Slotted perforations run parallel to the length of the panel and borders vary with panel size.

ACCESSORIES

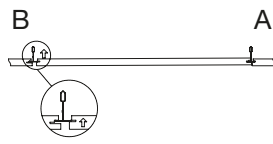
	Item No. ◆	Description	Dimensions Nominal W × L × H (Inches)	Color	PCS/ CTN
Suspension Systems	7301BL	Prelude® XL® 12" HD Main Beam	15/16 × 144 × 1-11/16"	Black	20
	XL7341BL	Prelude XL 4" Cross Tee	15/16 × 48 × 1-11/16"	Black	60
	XL8320BL	Prelude XL 2" Cross Tee	15/16 × 24 × 1-11/16"	Black	60
Accessories	7891	12-Gauge Hanger Wire	144" Length	Mill Finish	140
	7425*	24" Stabilizer Bar	24" L	Mill Finish	100
	7445*	48" Stabilizer Bar	48" L	Mill Finish	100
	BERC2	2" Beam End Retaining Clip	N/A	Mill Finish	200
	XTAC	Cross Tee Adapter Clip	N/A	Mill Finish	100
	MBAC	Main Beam Adapter Clip	7/8 × 144 × 7/8"	Mill Finish	70
Perimeter Trim	7800BL	7/8" Angle Molding	3/4 × 120 × 15/16"	Black	30
	7875	10' Shadow Molding for WoodWorks® Vector®	15/16 × 120 × 15/16"	White	30
	7897	10' Seismic Shadow Molding for WoodWorks Vector	15/16 × 120 × 15/16"	White	30
Infill Panels	1713BL	Fine Fissured™ Lay-in Panel	24 × 24 × 3/4"	Tech Black	14
	2820BK	Calla® Lay-in Panel	24 × 24 × 1"	Black	10
	5479	BioAcoustic™ Infill Panel	24 × 24 × 5/8"	Beige Matte	12
	1318	Backstage Noir® Square Lay-in Panel	24 × 24 × 3/4"	Black	12
	5823	BioAcoustic Infill Panel	24 × 24 × 5/8"	Black Matte	12
	8200T10	Fiberglass Infill Panel	24 × 24 × 1"	Black Gloss	12
FSC® certified Premium Trim*	5415F02WIH4_ _ _	4" WoodWorks Vector/Tegular Trim with 4 clips (Item 5925)	4 × 96 × 3/4"	All Veneers	4
	5415F02WIH6_ _ _	6" WoodWorks Vector/Tegular Trim with 4 clips (Item 5925)	6 × 96 × 3/4"	All Veneers	4

◆ When specifying or ordering, include the appropriate 3-letter color suffix that coordinates with your WoodWorks ceiling (e.g. 5401F01W1 N W M).
NOTE: Reference Price List for minimum order quantities. If replacement clips are needed, order Item 6041 (Hold-down Clips) or Item 5590 (Safety Clips); 100 PCS/CTN.
* Stabilizer bars are required if grid is not attached to perimeter with GCWA or BERC2.

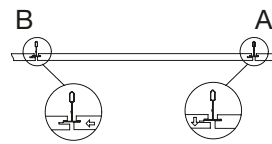
VECTOR PANEL INSTALLATION DETAILS



Step 1: Fully insert the deepest kerf of edge "A", the access kerf, onto the exposed grid flange.

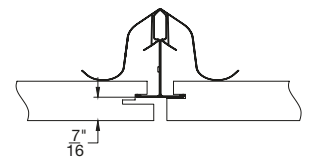


Step 2: Raise the "B" edge of the panel, the registration kerf, into the grid opening until the kerf lines up with the grid flange.

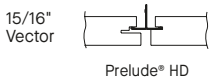


Step 3: Slide the panel so that the registration kerf on edge "B" engages the grid flange. Ensure that the access kerf on edge "A" drops down into the correct position.

PANEL FACE OFFSET

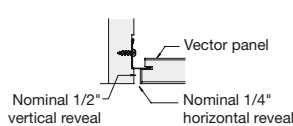


SUSPENSION SYSTEMS (Heavy-duty)

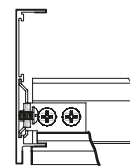


Heavy-Duty Prelude® XL® HD suspension system is available in many standard colors. Other colors available as special order.

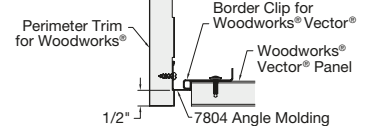
WOODWORKS® TRIM INSTALLATION



Wood Substrate Trim with Vector Panel



Aluminum Substrate Trim Assembly for Vector Panel



Trim with Cut Vector Panel

PHYSICAL DATA

Material

Fire-rated particle board (FRPB) with real wood veneers. Vertical Grain Fir (NVF) is FRPB with a reconstituted veneer.

Surface Finish

Clear or tinted semi-gloss coating

Fire Performance

Class A: ASTM E84 surface burning characteristics. Flame Spread Index 25 or less. Smoke Developed Index 50 or less.

CAN/ULC S102 surface burning characteristics.

Flame Spread Rating 25 or less. Smoke Developed Classification 50 or less.

ASTM E1264 Classification

ASTM E1264 Type XX – Fire Class A

Primary (Embodied) Energy

See all LCA information on our EPDs.

Application Considerations

Variation among panels may occur due to the natural characteristics of the wood and grain.

It is very important that WoodWorks panels be climatized prior to installation. Relative humidity between 25% and 55%, and temperatures between 50°F and 86°F, must be maintained throughout the life of the product.

Design Considerations

All perforated panels are standard with fleece attached. Panels without fleece must be specified.

Different panel sizes should not be installed together. Perforated border on 24" × 72" panels are different than other panel sizes.

Vector safety clips included with panels may be visible through panel perforations.

Specification Consideration

Attention: For FSC-certified wood products to maintain their CoC certification, products must be sold to a CoC-certified distributor or directly to the installing contractor. Failure to do so breaks the CoC.

Seismic Restraint

WoodWorks Vector panels have been engineered, tested, and approved for application in all seismic areas when installed per Armstrong Ceilings installation instructions.

Cleaning and Disinfecting

Cleaning and CDC-approved disinfecting options available on armstrongceilings.com/cleaning

FAST134 Program Considerations

Size of Job Matters: Big jobs, over 2500 SF or 50 pieces for shapes/vertical elements will have longer lead times.

Location Matters: Transit time not included. We are ready to ship in 1 week on FAST1 items. However, transit to the states west of Wyoming may add time.

Distributor Truck Schedule Matters: We rely on distribution to help move products around the country. When speed matters, work with your local distributor to ensure FAST134 service.

Stock vs. Made-to-Order Matters: FAST3 & FAST4 items are made-to-order and will ship direct to distributor. FAST1 (stocked items) will go through distribution and depend on distributor truck schedules.

Warranty

Details at armstrongceilings.com/warranty

Weight; Square Feet
Panels – 2.75 LBS/SF