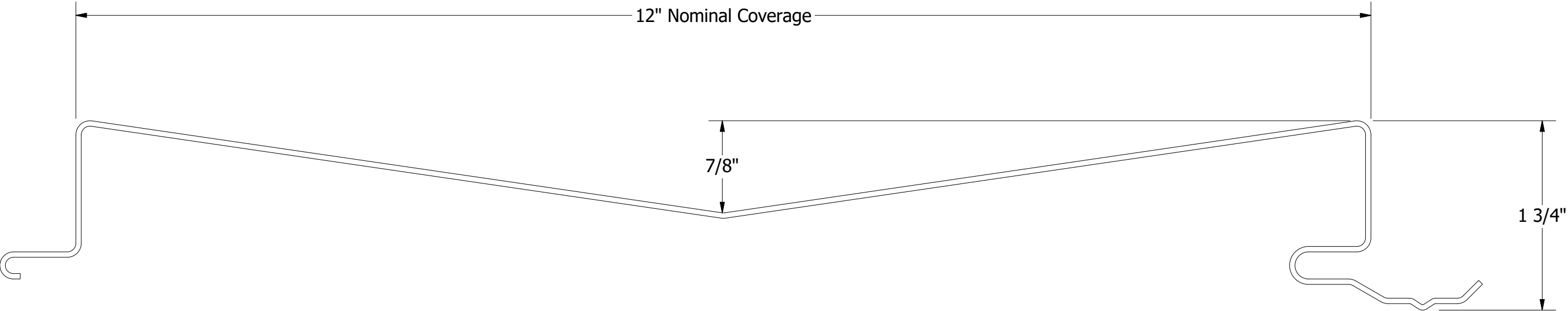


DWF & DWH Design Wall Panels

						Design Wall Panel Profile Detail						
						DWG. NO.			DR	KRK	DATE	7/26/2016
						MATERIAL			APP	DAS	DATE	7/26/2016
REV. NO.	DATE	DESCRIPTION OF REVISION			BY	APP	SH. SIZE			B	SCALE	X:X



ATAS INTERNATIONAL, INC
Allentown PA
610-395-8445
Mesa AZ
480-558-7210



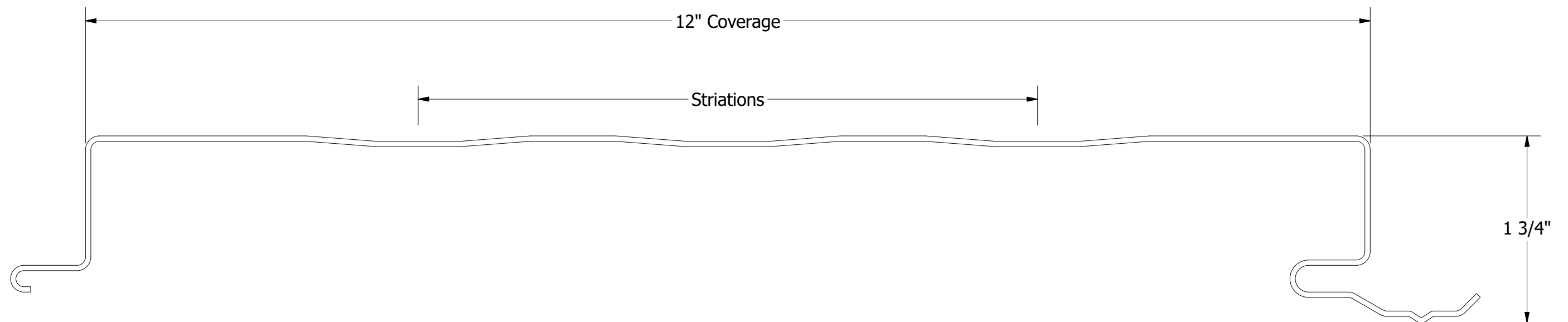
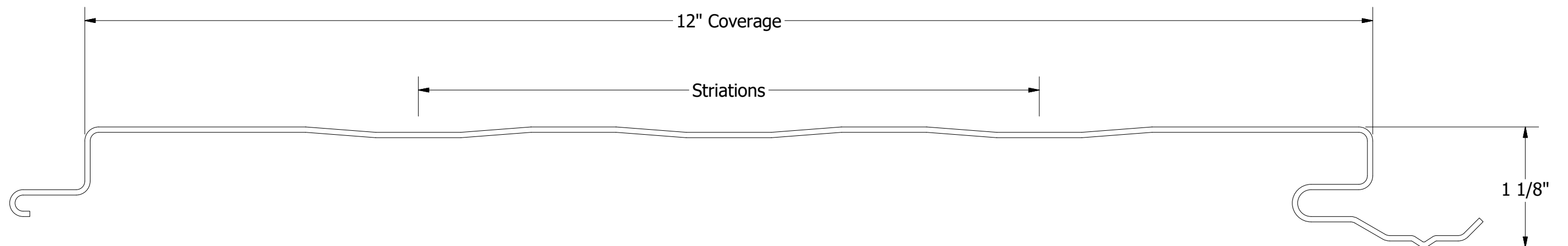
DSV120 - Design Wall Panel

Minimum Length: 3'-0"
Maximum Length: 26'-0"

					TITLE		
					Design Wall Panel Profile Detail		
					DWG. NO.	DR KRK	DATE 7/26/2016
						APP DAS	DATE 7/26/2016
REV. NO.	DATE	DESCRIPTION OF REVISION	BY	APP	MATERIAL		
					SH. SIZE	B	SCALE X:X



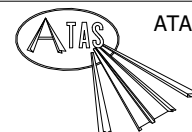
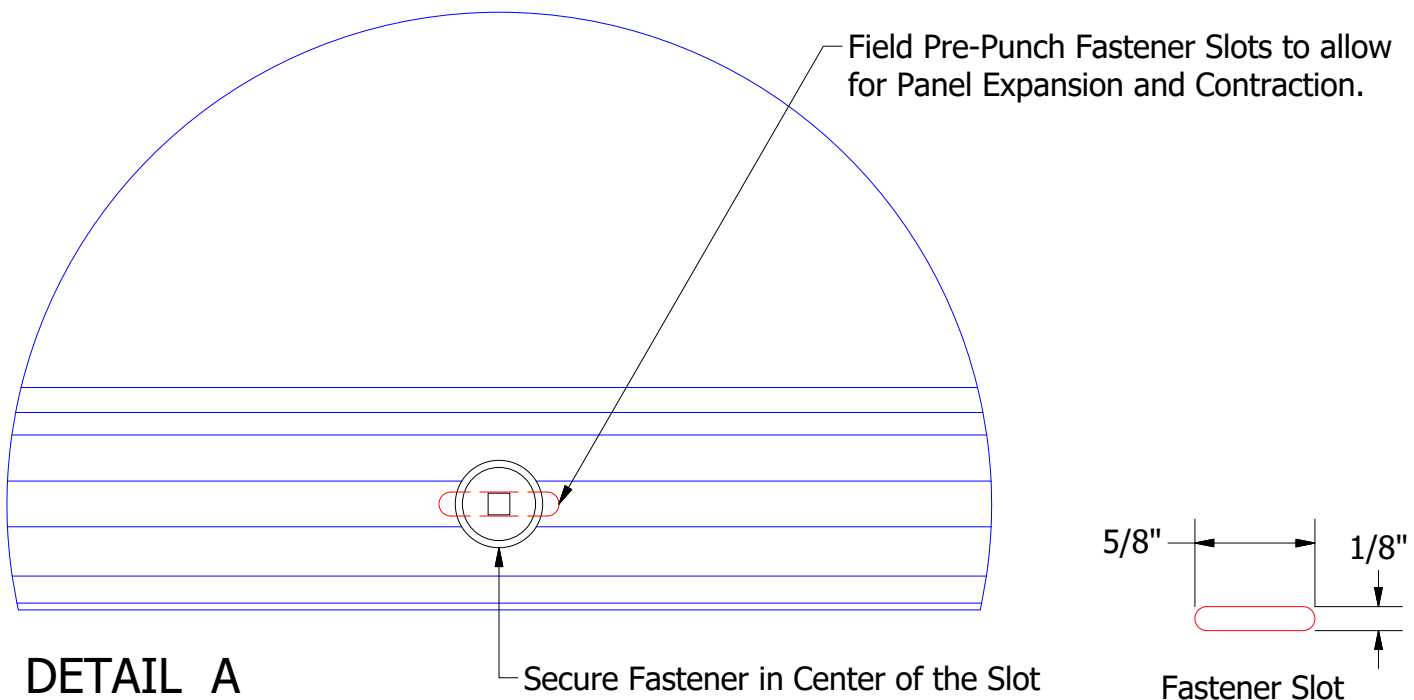
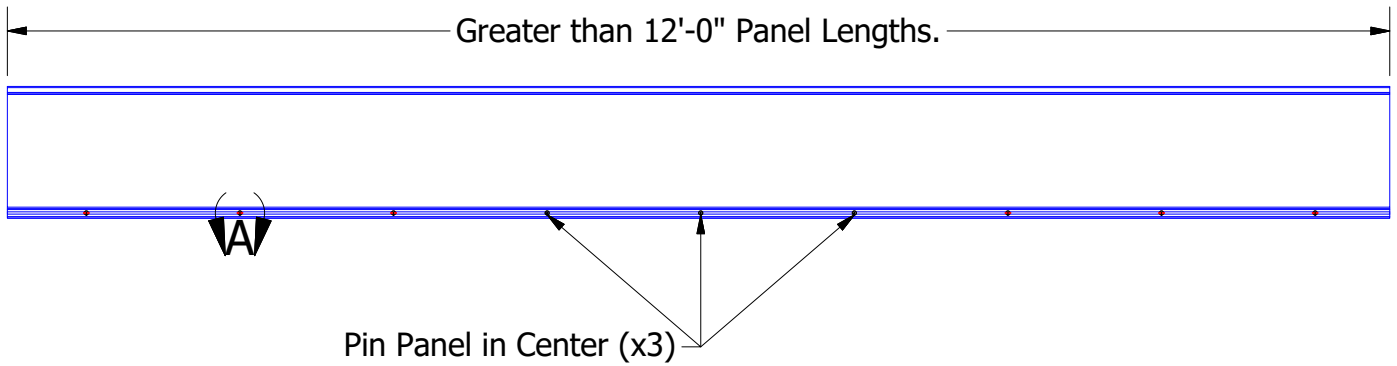
ATAS INTERNATIONAL, INC
Allentown PA
610-395-8445
Mesa AZ
480-558-7210



Minimum Length: 6'-0"
Maximum Length: 26'-0"

Maximum Length: 26'-0"

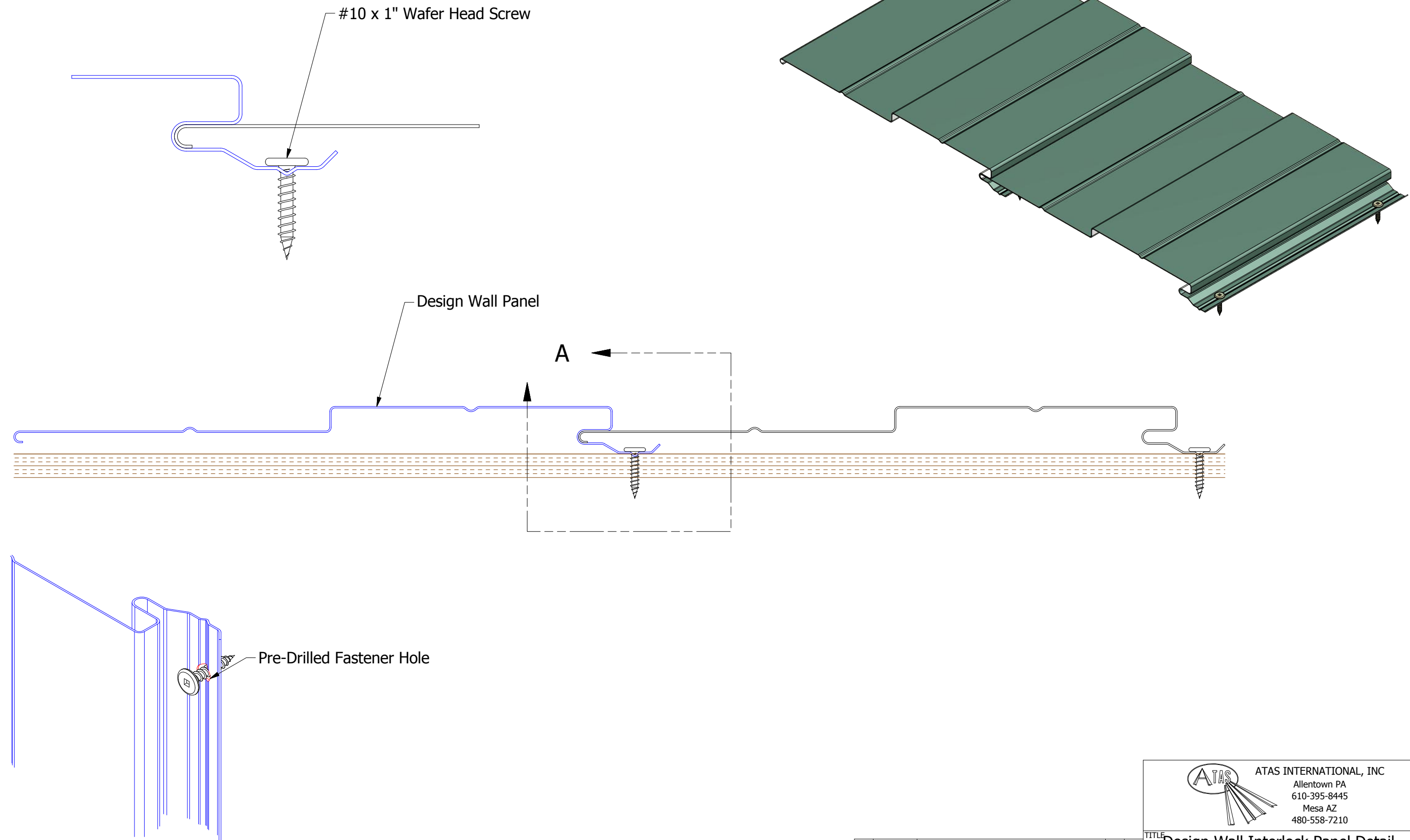
					TITLE						
					Design Wall Panel Profile Detail						
					DWG. NO.			DR	KRK	DATE	7/26/2016
								APP	DAS	DATE	7/26/2016
					MATERIAL			SH. SIZE	B	SCALE	X:X
REV. NO.	DATE	DESCRIPTION OF REVISION			BY	APP					



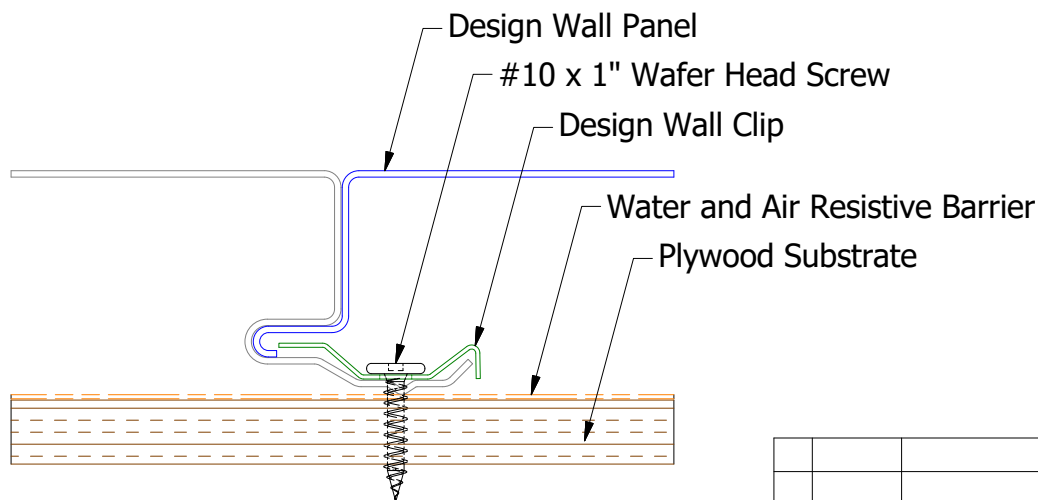
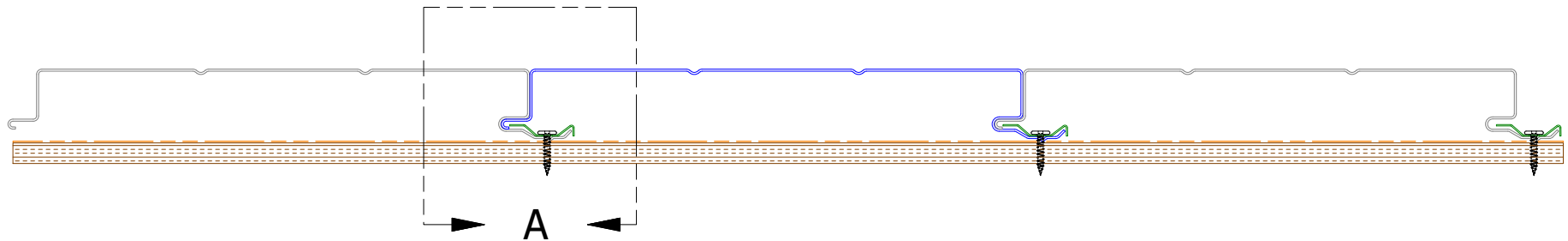
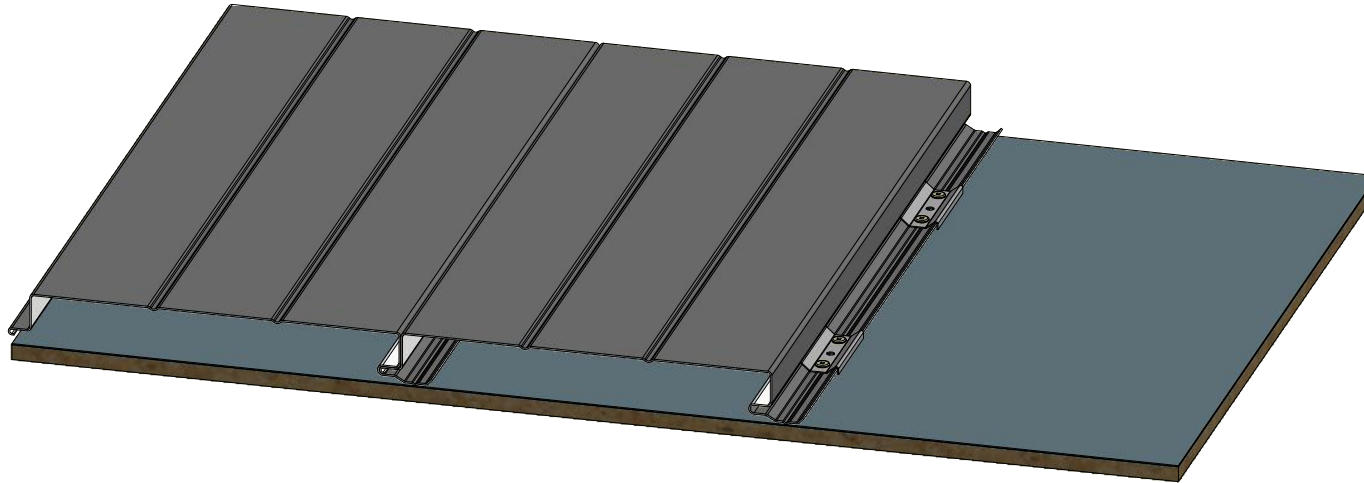
ATAS INTERNATIONAL, INC
 Allentown PA
 610-395-8445
 Mesa AZ
 480-558-7210

TITLE **Design Wall Fastener Slots Detail**

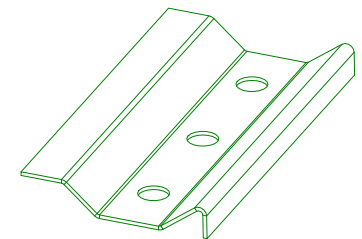
REV. NO.	DATE	DESCRIPTION OF REVISION	BY	APP	DWG. NO.	DR DMR	DATE 5/12/2021
					MATERIAL	APP	DATE
						SH. SIZE A	SCALE X:X



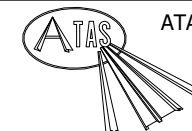
Pre-Drill Fastener Holes for Panels Greater than 20'-0" in Length.



DETAIL A



Design Wall Clip

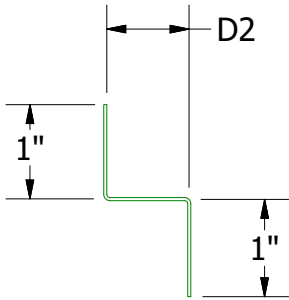
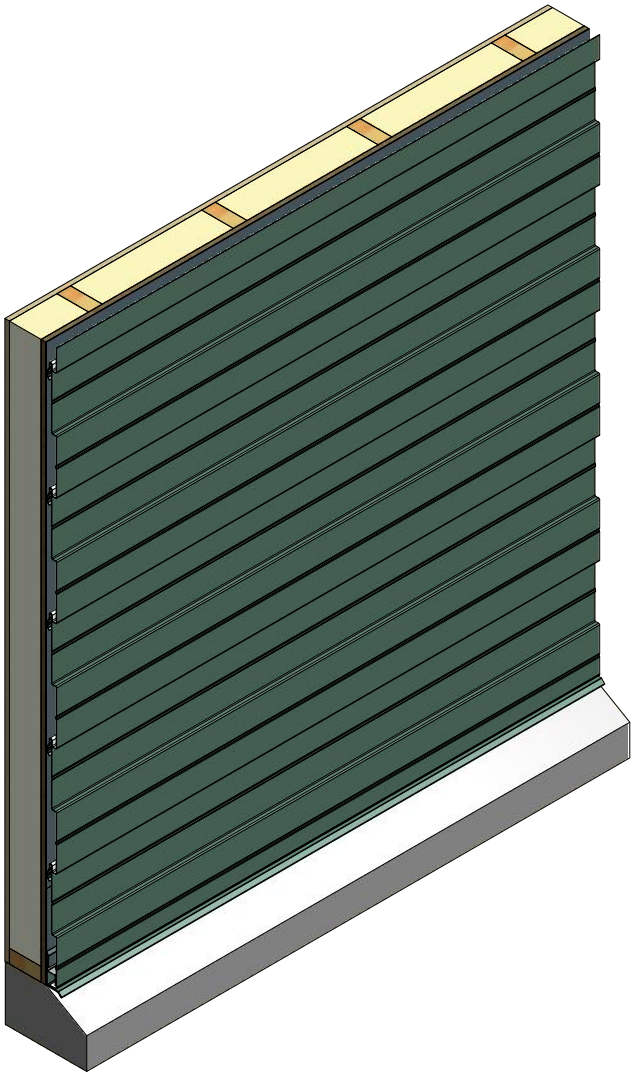
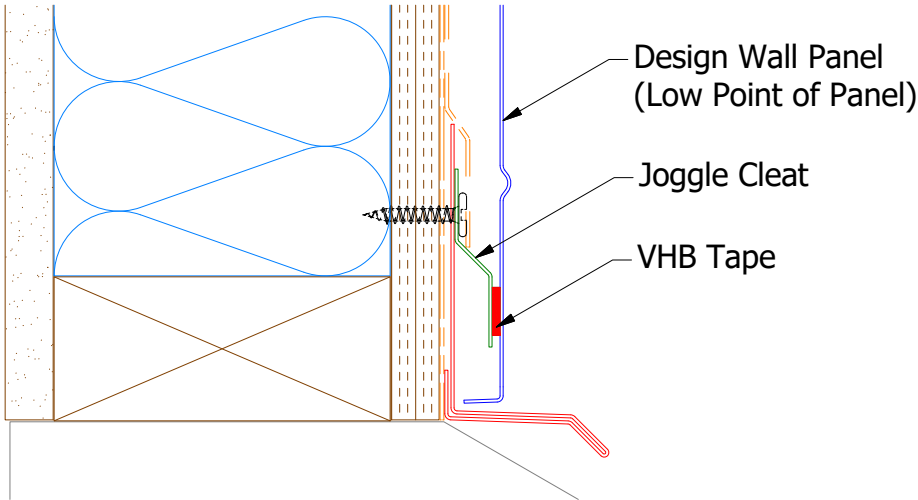
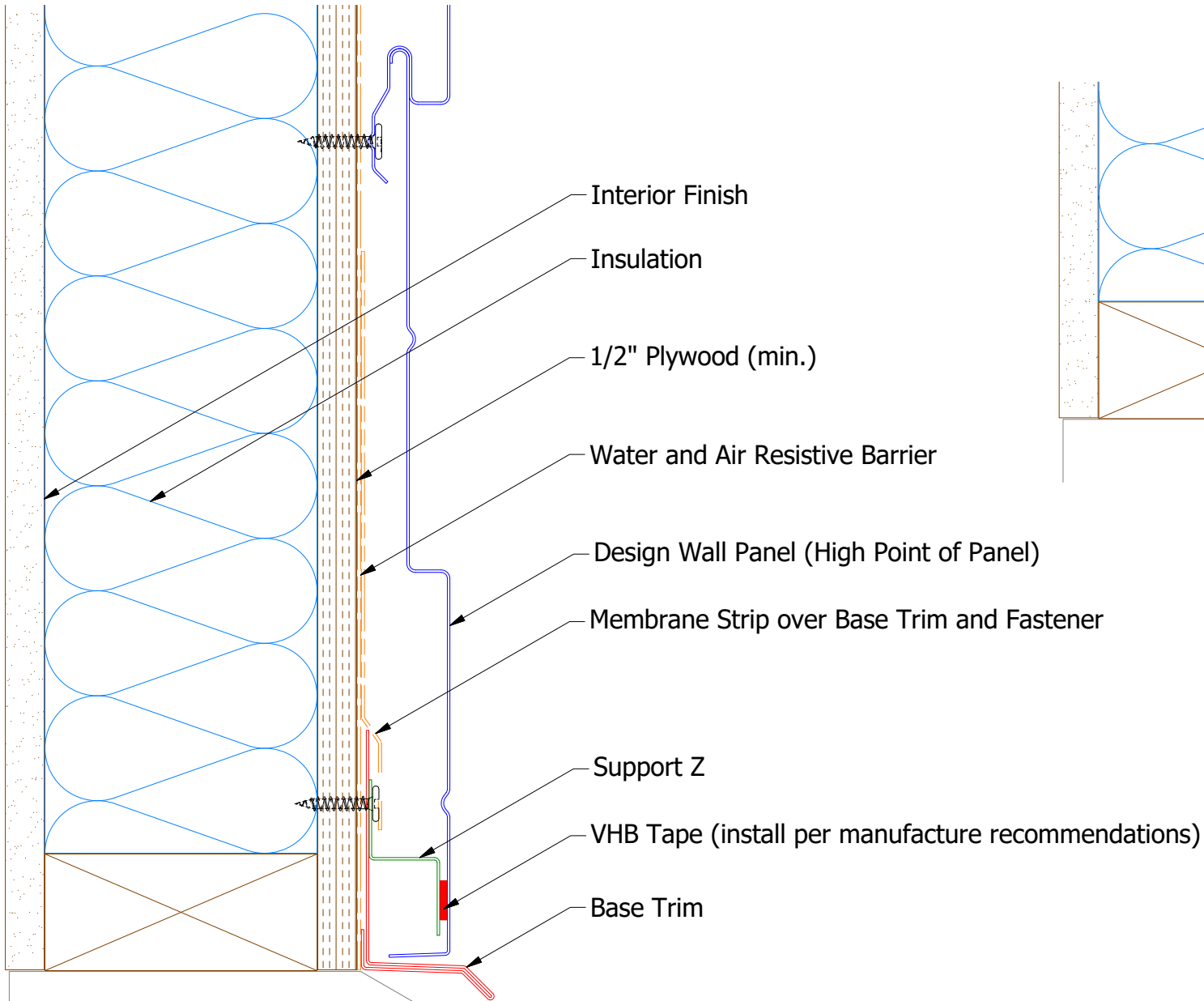


ATAS INTERNATIONAL, INC
Allentown PA
610-395-8445
Mesa AZ
480-558-7210

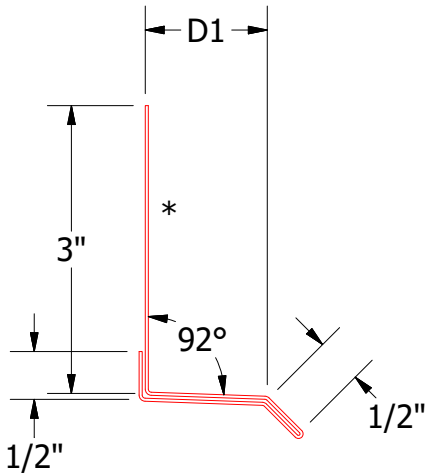
TITLE		Design Wall Clip Detail	
DWG. NO.		DR	DATE
		KRK	3/18/2021
MATERIAL		APP	DATE
		SH. SIZE	SCALE
		A	X:X

REV. NO.	DATE	DESCRIPTION OF REVISION	BY	APP

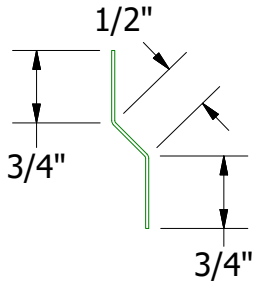
Horizontal Panel



Support Z
DWA681: D2=1"
DSA681:D2=1 5/8"




Base Trim
DWA661: D1=1 1/4"
DSA661: D1=2"

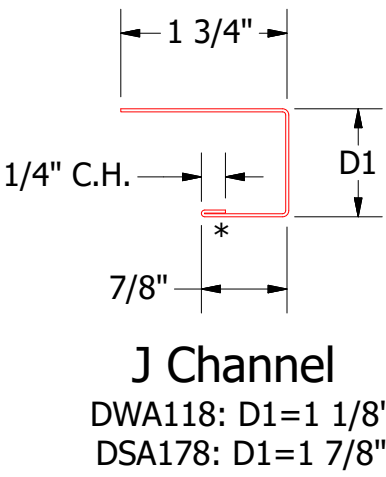
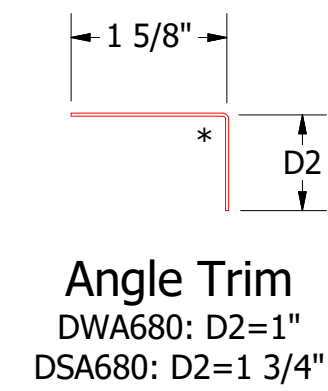
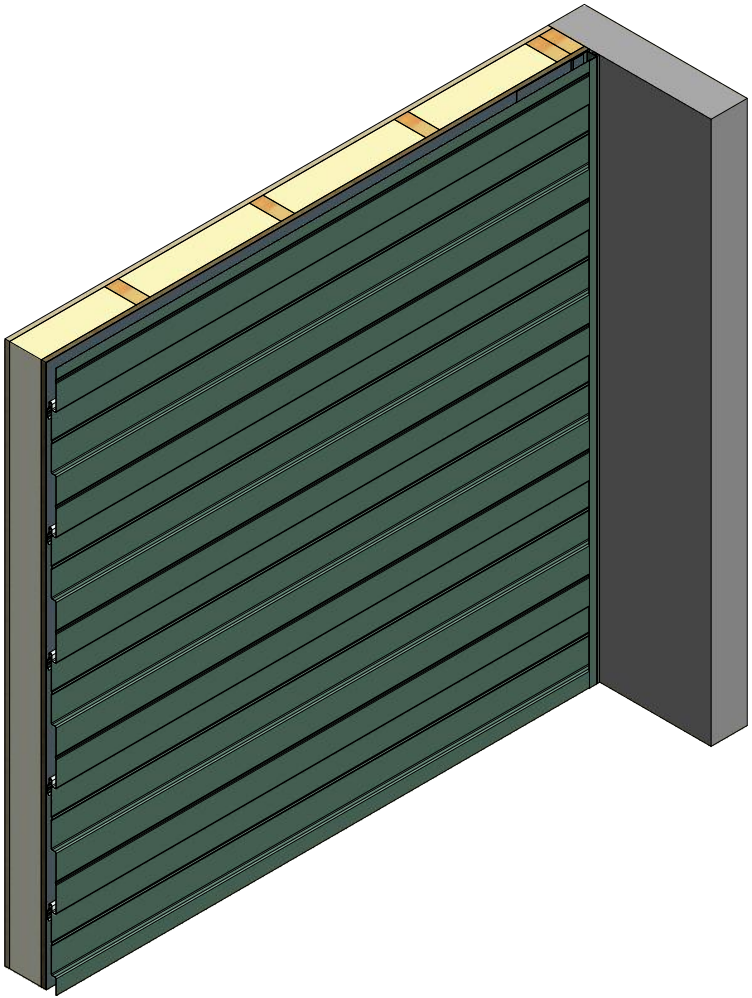
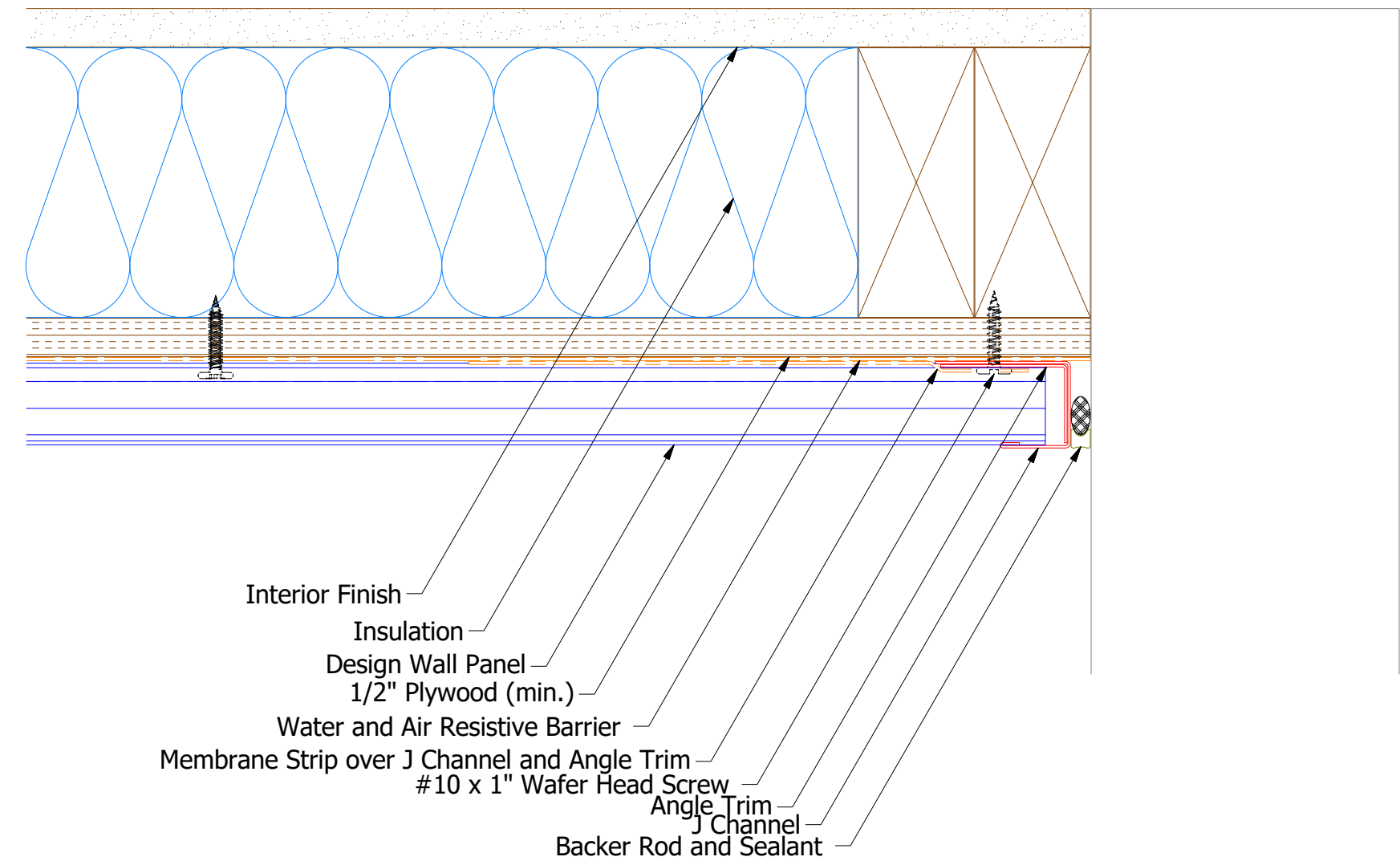


DWA975/DSA975 - Joggle Cleat

Note: * denotes color side.
Note: stainless steel pop rivets maybe needed along with VHB tape for longer panels.

DWA661: D1=1 1/4" DSA661: D1=2"					<div></div> <div>ATAS INTERNATIONAL, INC Allentown PA 610-395-8445 Mesa AZ 480-558-7210</div>				
					TITLE Design Wall Base Detail				
					DWG. NO.			DR DMR	DATE 6/23/2016
1	7/13/2021	Changed Pop Rivets to VHB Tape	DMR		MATERIAL			APP DAS	DATE 7/25/16
REV. NO.	DATE	DESCRIPTION OF REVISION	BY	APP				SH. SIZE B	SCALE X:X

Horizontal Panel



Note: * denotes color side.

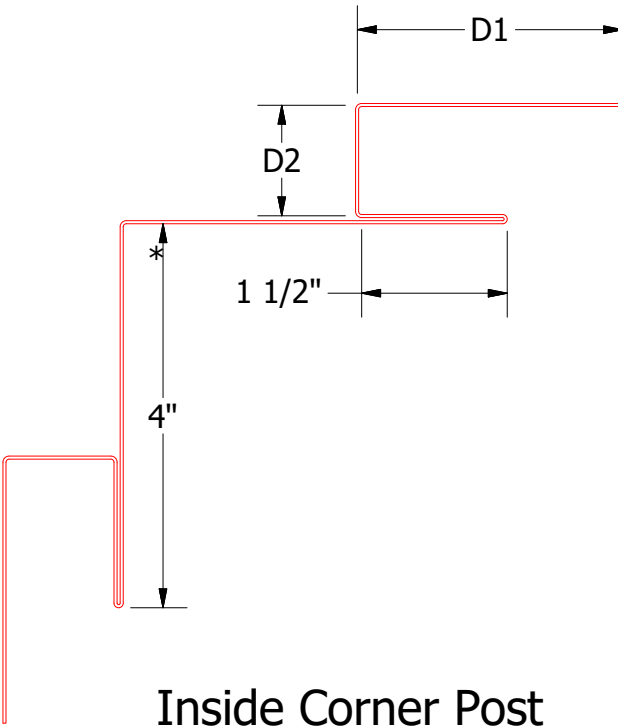
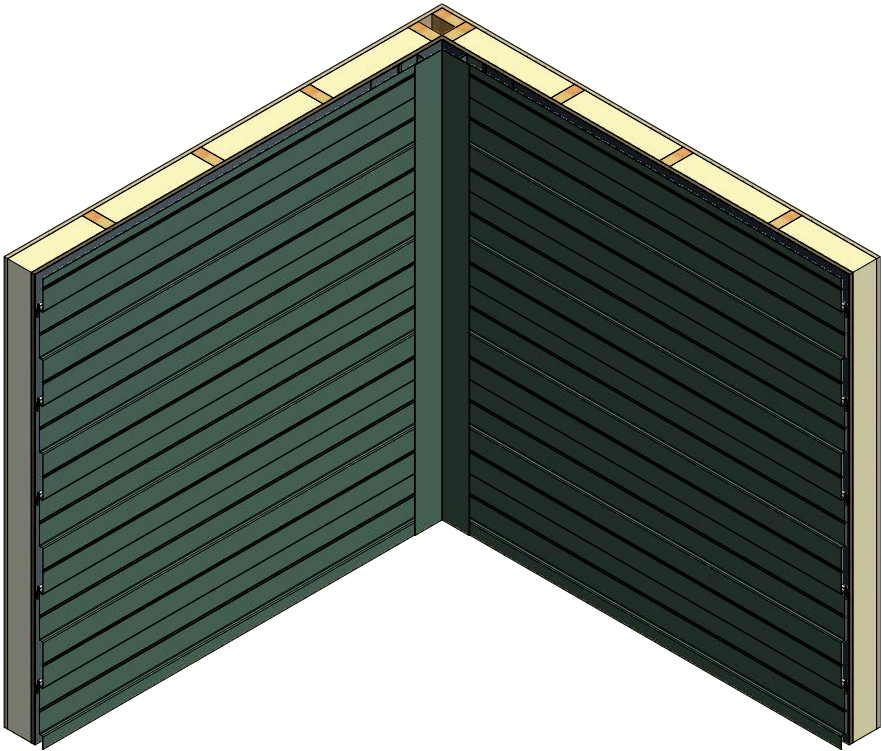
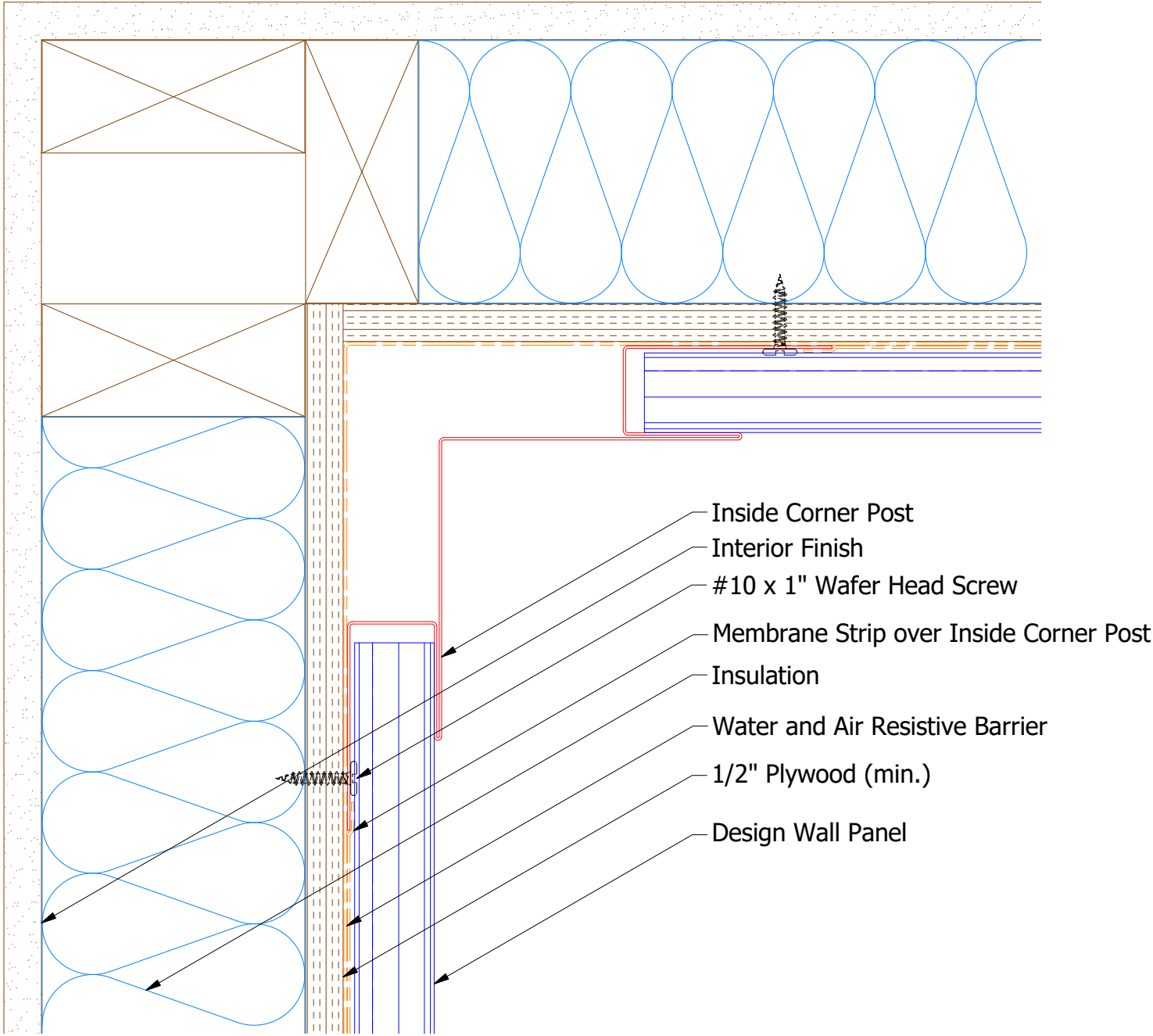
TITLE			
Design Wall Endwall Detail			
REV. NO.	DATE	DESCRIPTION OF REVISION	BY
1	7/13/2021	Changed Pop Rivets to VHB Tape	DMR

DWG. NO.		DR	DMR	DATE	6/23/2016
MATERIAL		APP	DAS	DATE	7/25/16
SH. SIZE		B	SCALE	X:X	



ATAS INTERNATIONAL, INC
Allentown PA
610-395-8445
Mesa AZ
480-558-7210

Horizontal Panel

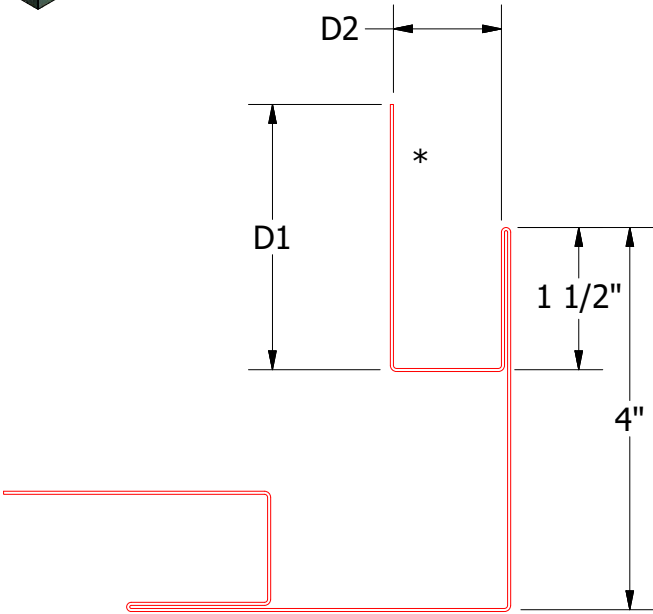
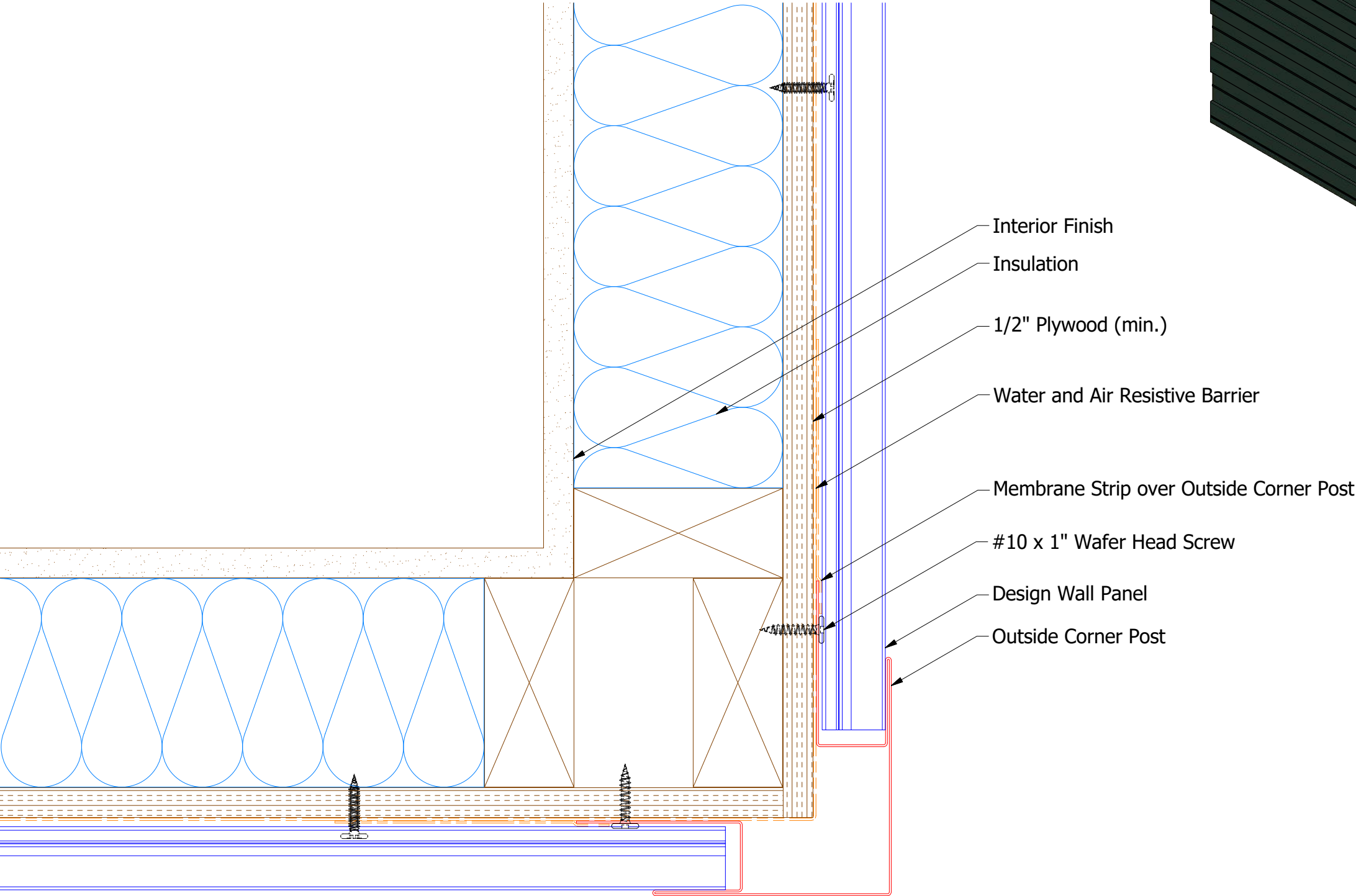
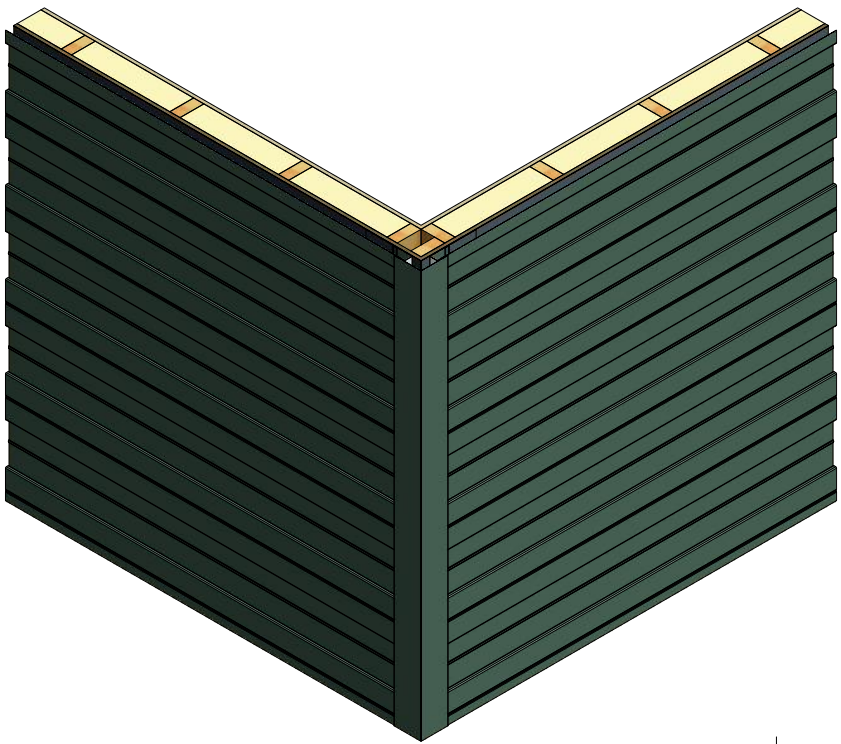


Inside Corner Post
DWA601: D1= 2 3/4; D2= 1 1/8"
DSA601: D1= 3; D2= 1 7/8"

Note: * denotes color side.

						TITLE		Design Wall Inside Corner Detail	
1	7/16/2021	Changed Pop Rivets to VHB Tape	DMR	APP	DATE	DWG. NO.		DR	DATE
								DMR	6/27/2016
						MATERIAL		DAS	7/26/16
REV. NO.	DATE	DESCRIPTION OF REVISION	BY	APP		SH. SIZE		B	SCALE
									X:X

Horizontal Panel



Outside Corner Post
DWA602: D1= 2 3/4; D2= 1 1/8"
DSA602: D1= 3; D2= 1 7/8"

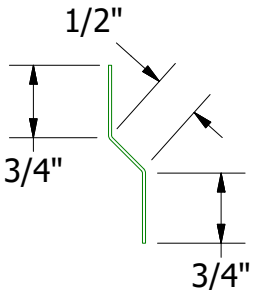
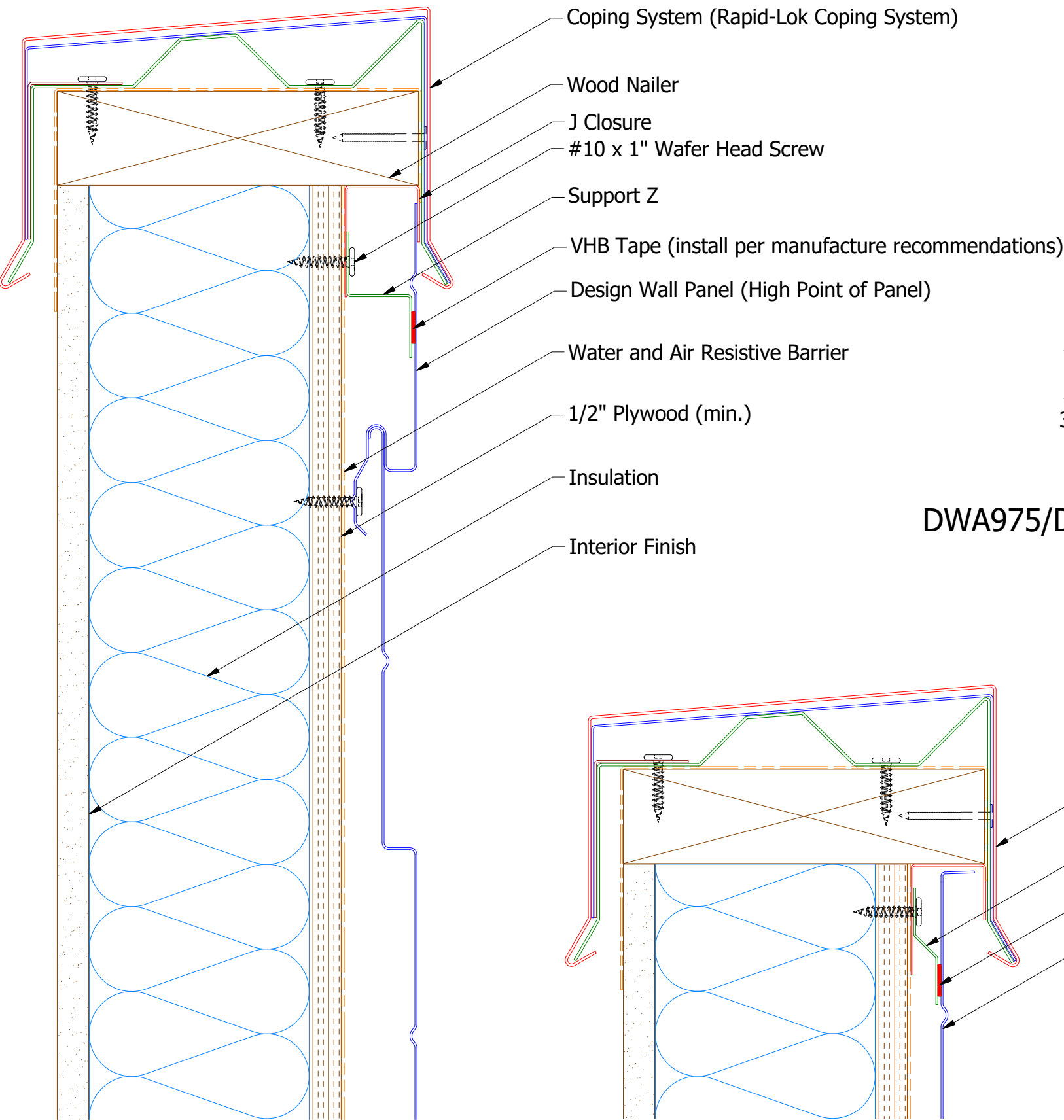
Note: * denotes color side.

						TITLE	
						Design Wall Outside Corner Detail	
REV. NO.	DATE	DESCRIPTION OF REVISION	BY	APP	DWG. NO.		DR
							DMR
					MATERIAL		DATE
01	7/19/2021	Changed Pop Rivets to VHB Tape	DMR				6/28/2016
							DATE
							7/26/16
							SCALE
							X:X

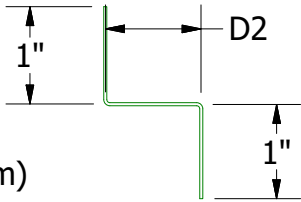
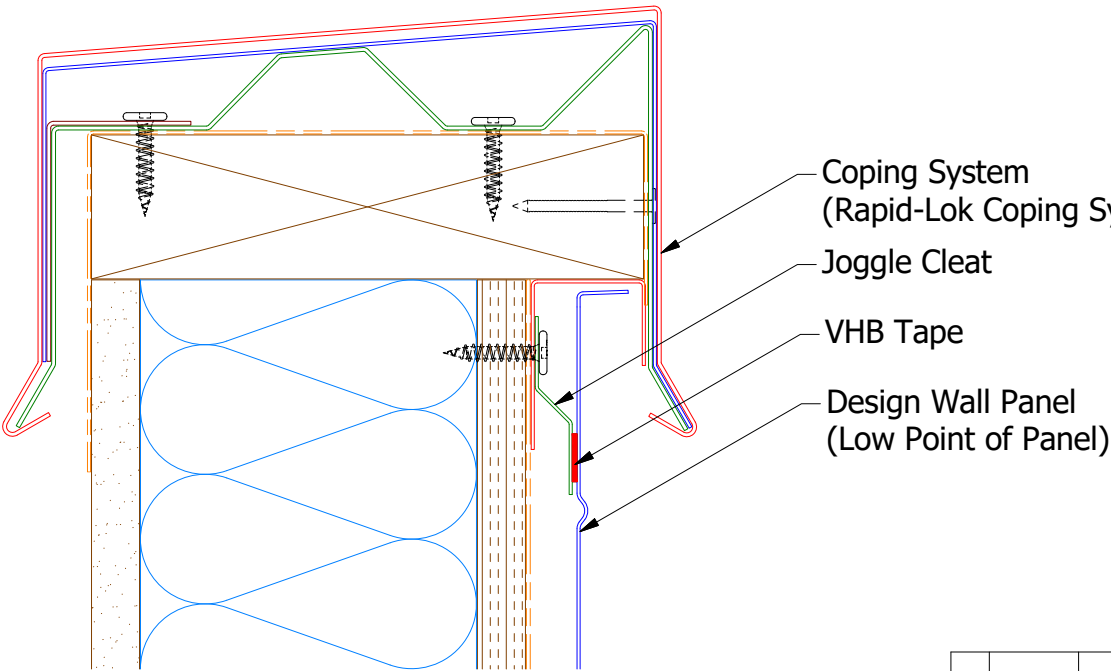
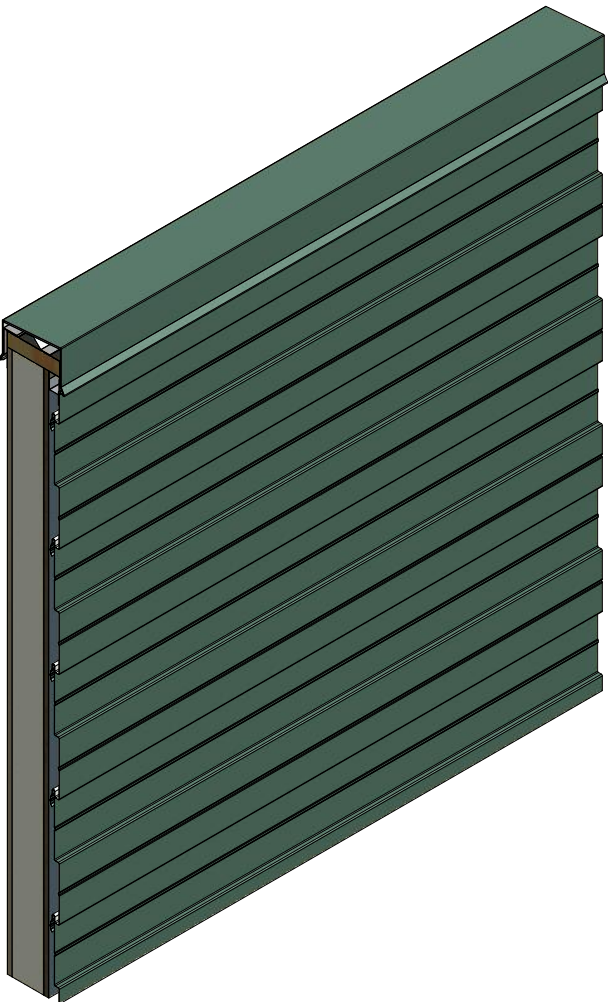


ATAS INTERNATIONAL, INC
Allentown PA
610-395-8445
Mesa AZ
480-558-7210

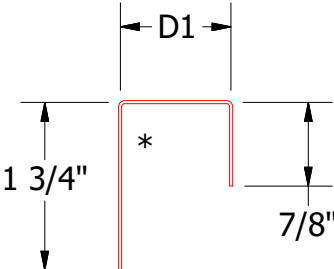
Horizontal Panel



DWA975/DSA975 - Joggle Cleat



Support Z
DWA681: D2= 1"
DSA681: D2= 1 5/8"

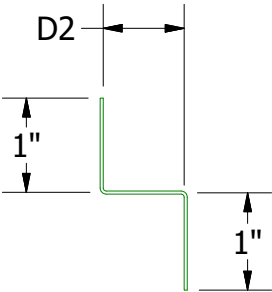
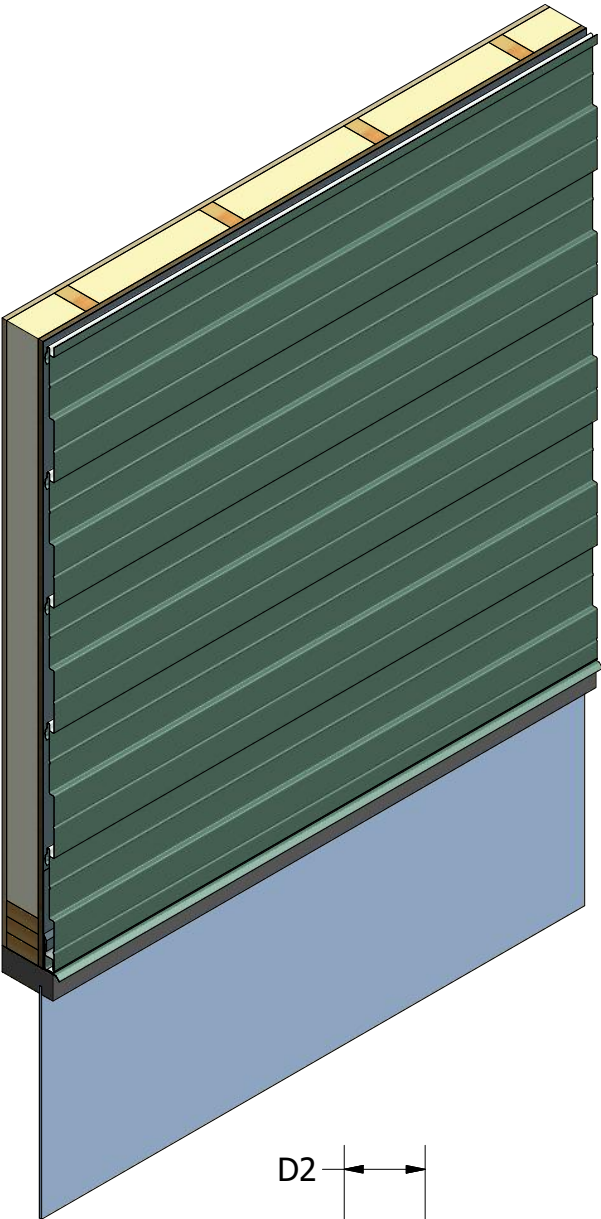
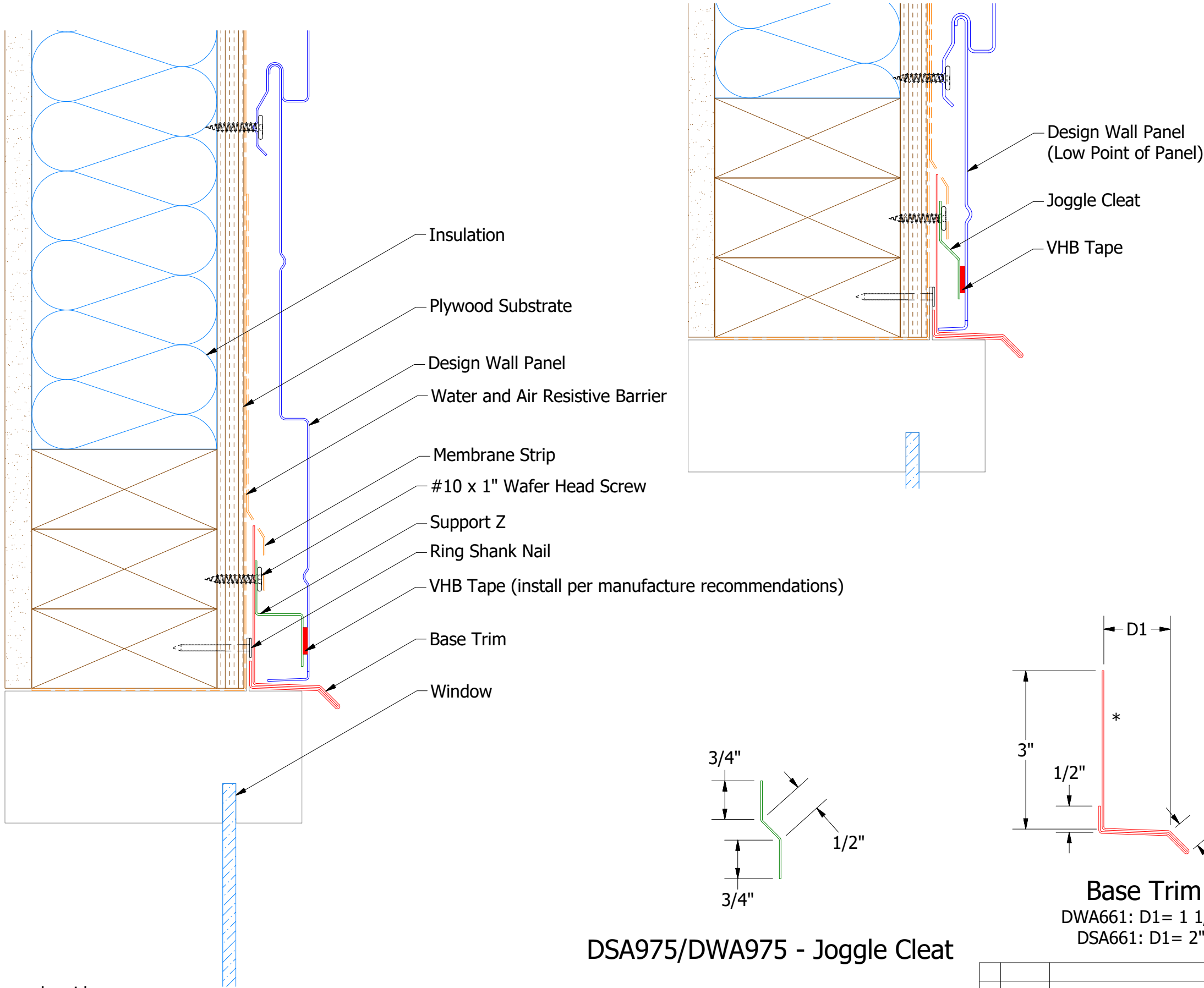


J Closure
DWA270: D1= 1 1/8"
DSA270: D1= 1 7/8"

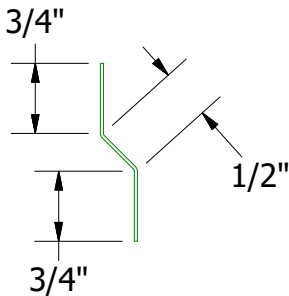
Note: * denotes color side.
Note: stainless steel pop rivets maybe needed along with VHB tape for longer panels.

				ATAS INTERNATIONAL, INC Allentown PA 610-395-8445 Mesa AZ 480-558-7210			
				ATAS			
				TITLE Design Wall Top of Wall Detail			
				DWG. NO.		DR	DATE
						DMR	6/30/2016
						APP	DATE
						DAS	7/26/16
						SH. SIZE	SCALE
						B	X:X

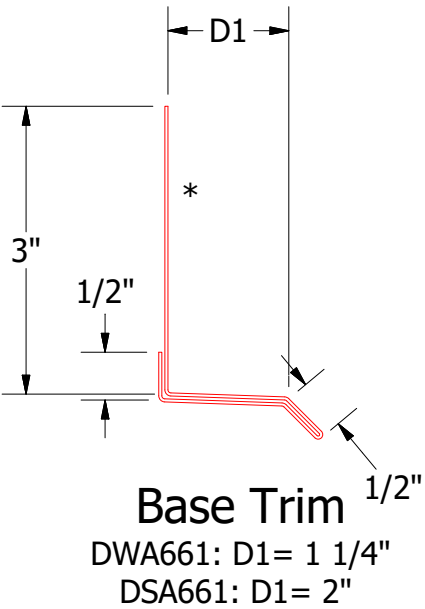
Horizontal Panel



Support Z
DWA681: D2=1"
DSA681:D2=1 5/8"



DSA975/DWA975 - Joggle Cleat

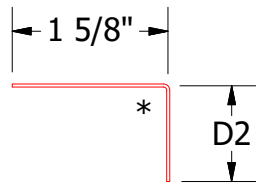
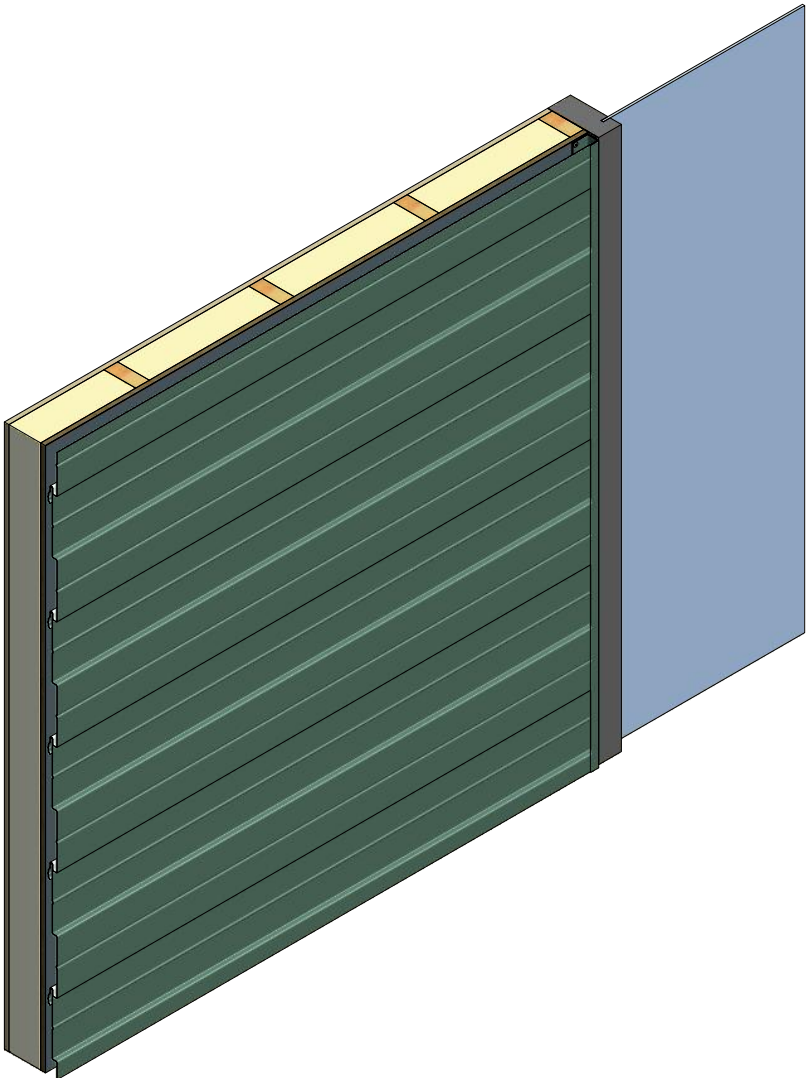
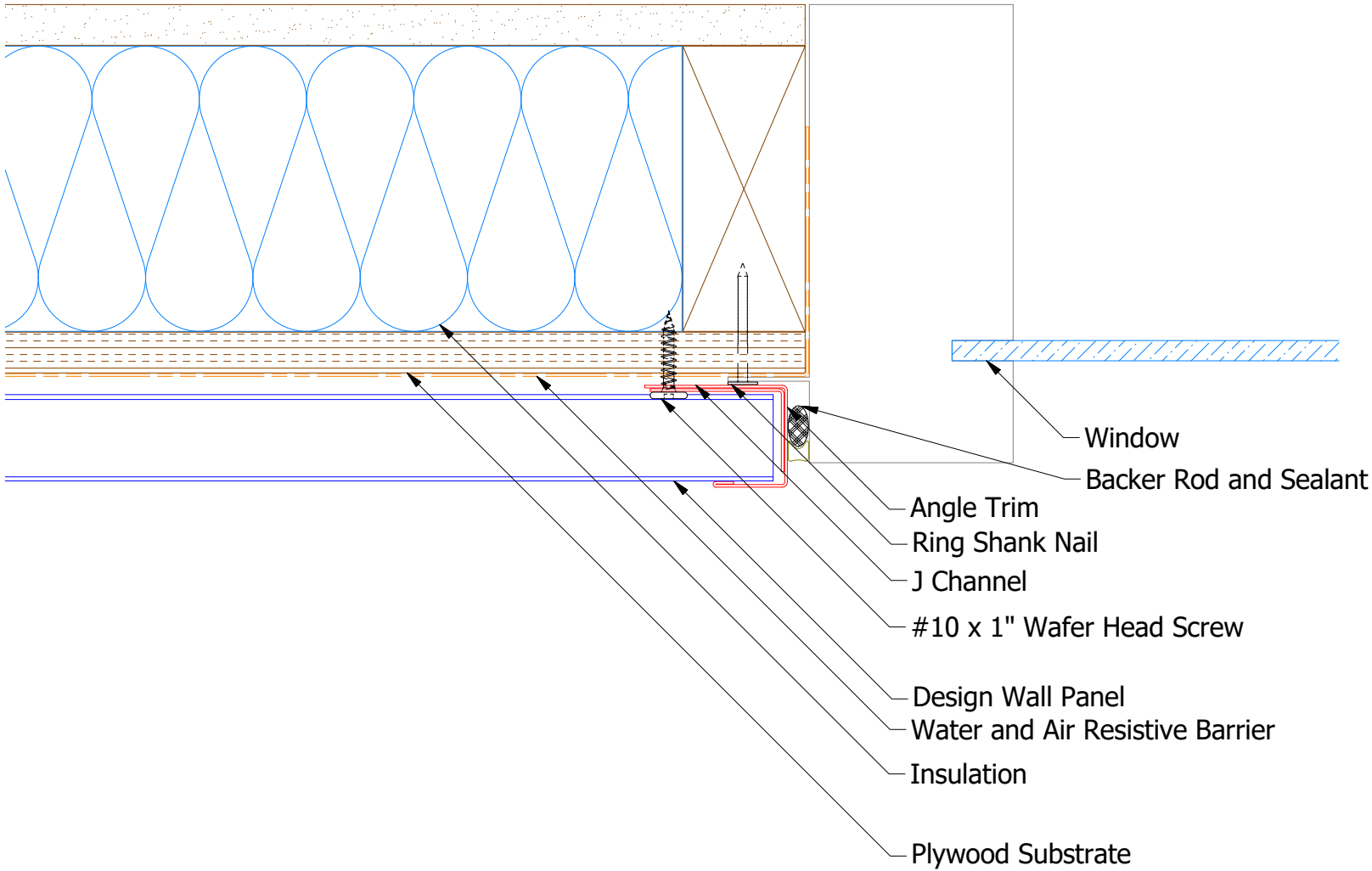


Note: * denotes color side.
Note: stainless steel pop rivets maybe needed along with VHB tape for longer panels.

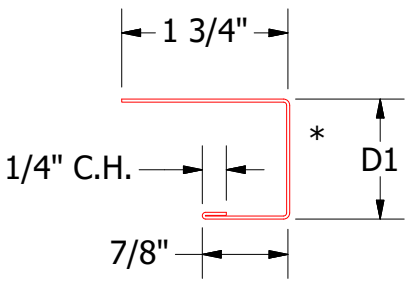
				Design Wall Head Window Flange Detail			
					DWG. NO.	DR MBP	DATE 7/27/2018
1	7/16/2021	Changed Pop Rivets to VHB Tape	DMR		MATERIAL	APP	DATE
REV. NO.	DATE	DESCRIPTION OF REVISION	BY	APP		SH. SIZE B	SCALE X:X

ATAS
ATAS INTERNATIONAL, INC
Allentown PA
610-395-8445
Mesa AZ
480-558-7210

Horizontal Panel



Angle Trim
DWA680: D2= 1"
DSA680: D2= 1 3/4"



J Channel
DWA118: D1= 1 1/8"
DSA178: D1= 1 7/8"

Note: * denotes color side.

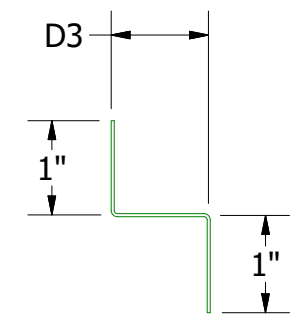
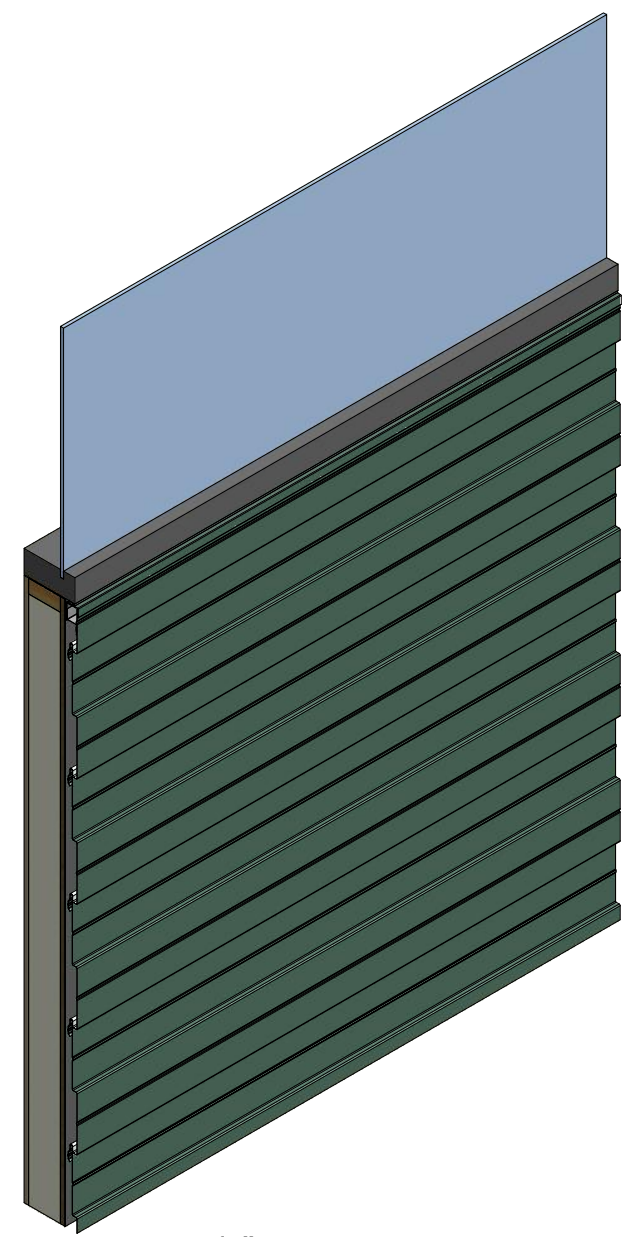
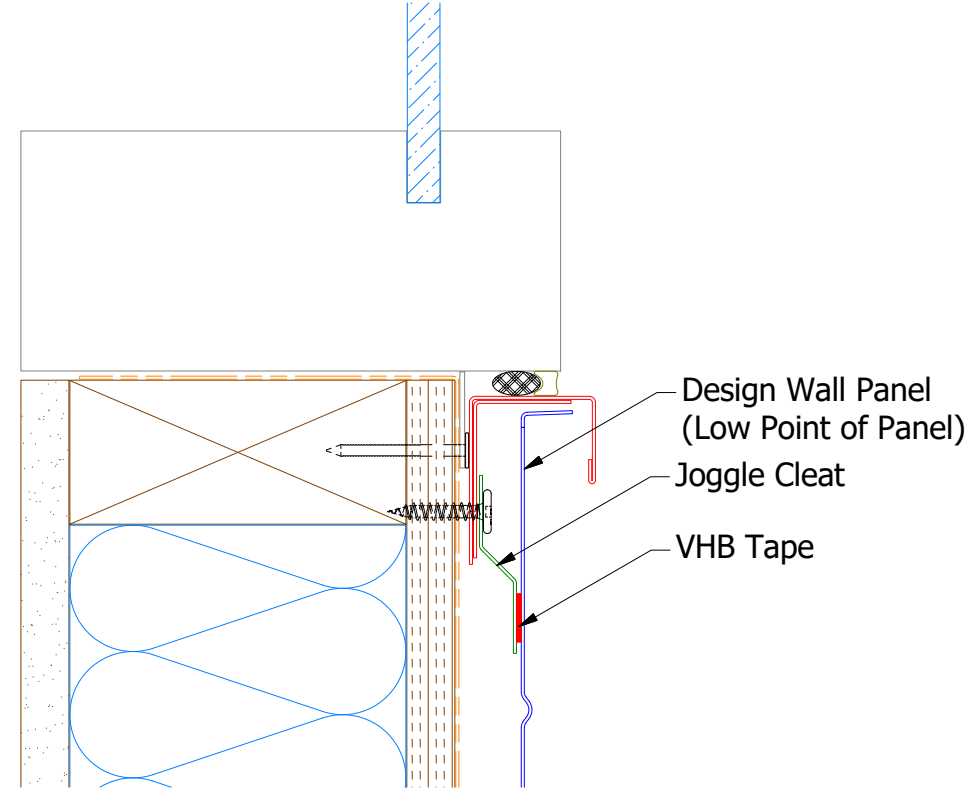
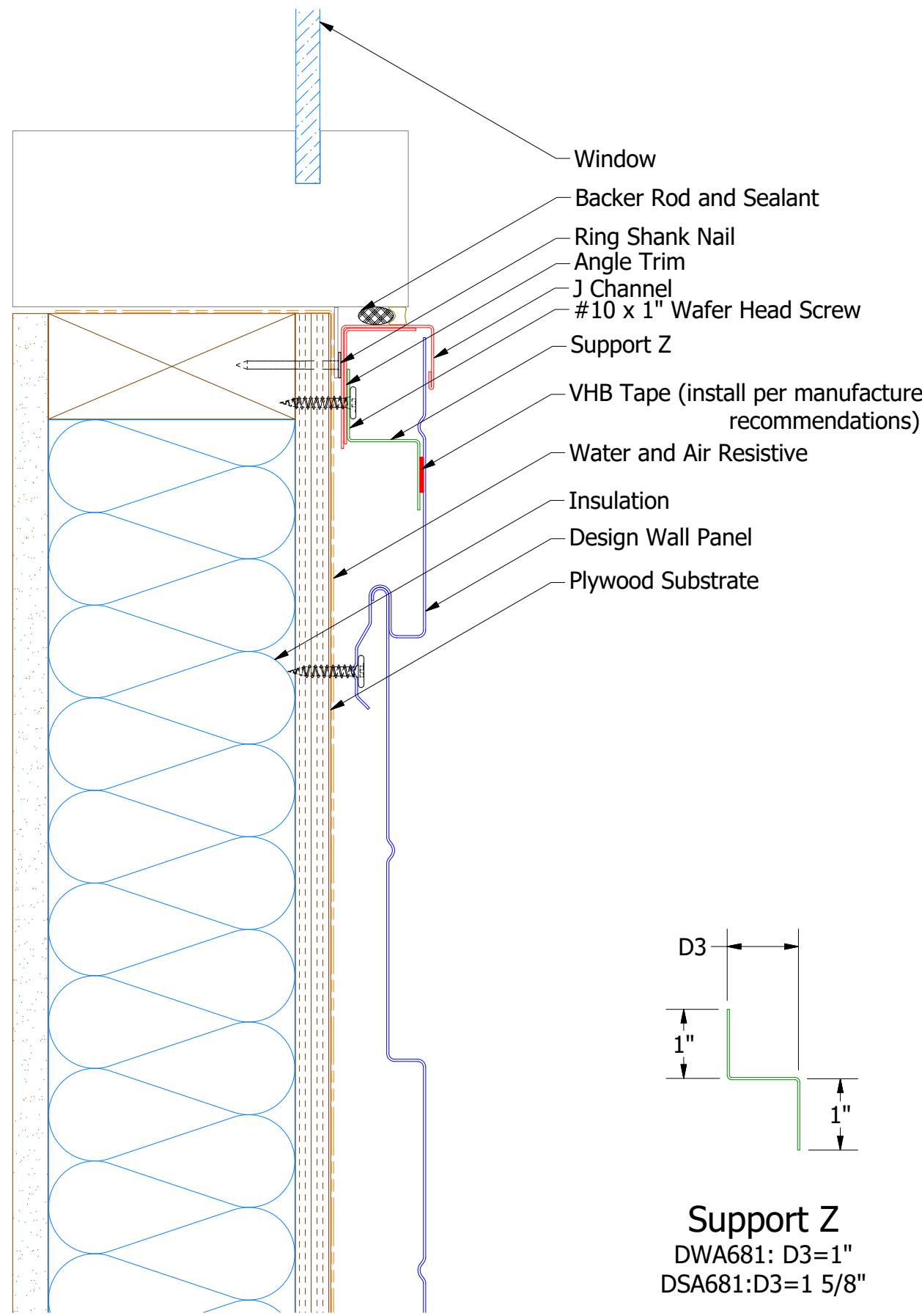
REV. NO.				TITLE			
02	7/19/2021	Changed Pop Rivets to VHB Tape	DMR	Design Wall Jamb Window Flange Detail			
01	11/6/2019	Updated SKU # for Angle Trim	KRK				
REV. NO.	DATE	DESCRIPTION OF REVISION	BY	APP	MATERIAL	SH. SIZE	SCALE
						B	X:X

ATAS

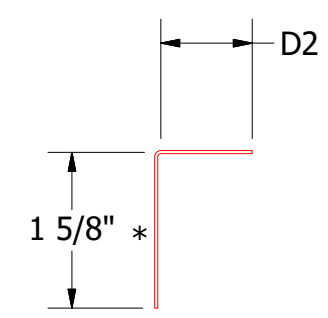
ATAS INTERNATIONAL, INC
Allentown PA
610-395-8445
Mesa AZ
480-558-7210

DWG. NO.	DR	DATE
	MBP	7/27/2018
	APP	DATE

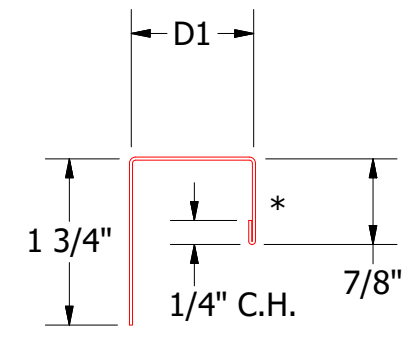
Horizontal Panel



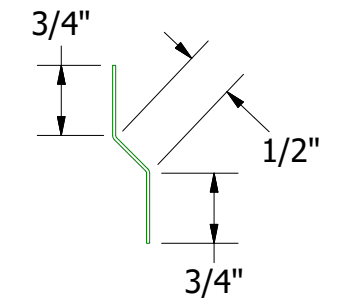
Support Z
DWA681: D3=1"
DSA681:D3=1 5/8"



Angle Trim
DWA680: D2= 1"
DSA680: D2= 1 3/4"



J Channel
DWA118: D1= 1 1/8"
DSA178: D1= 1 7/8"



DSA975/DWA975 - Joggle Cleat

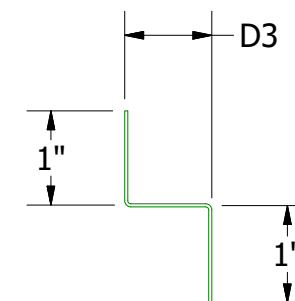
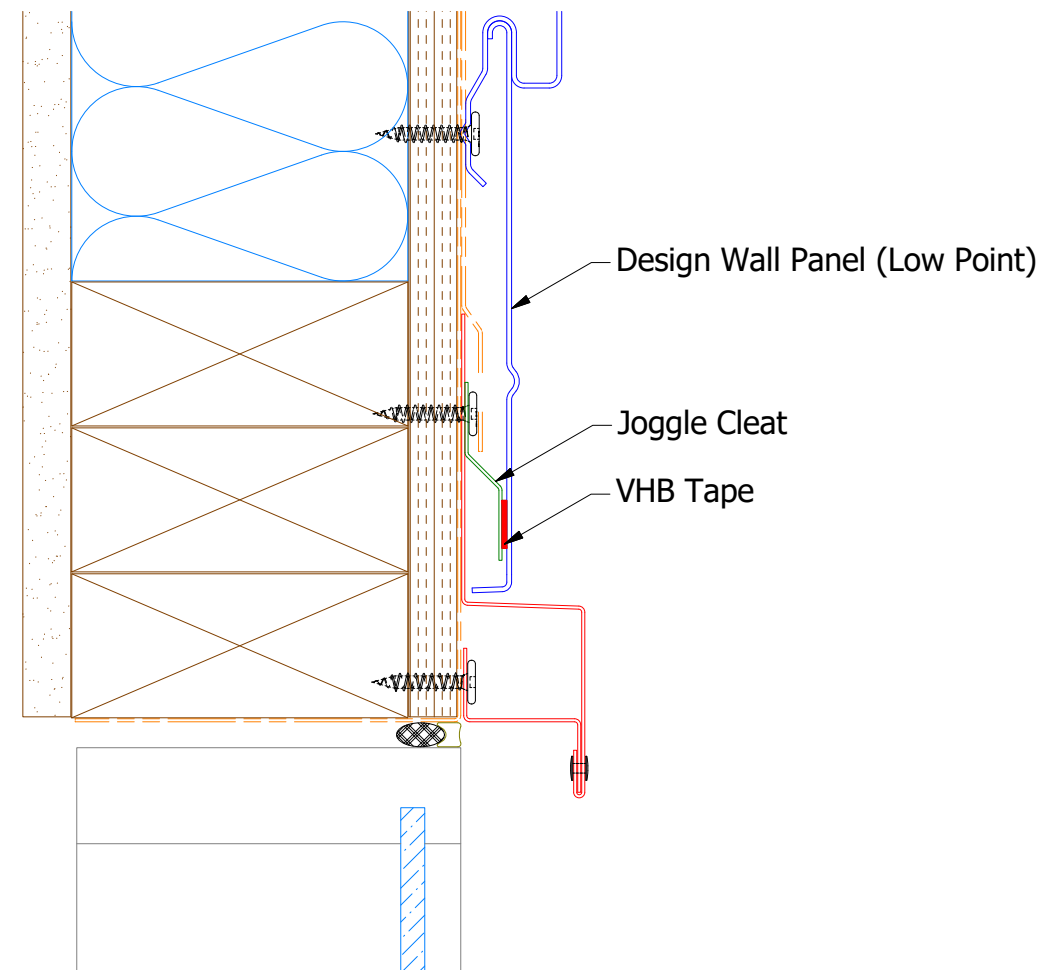
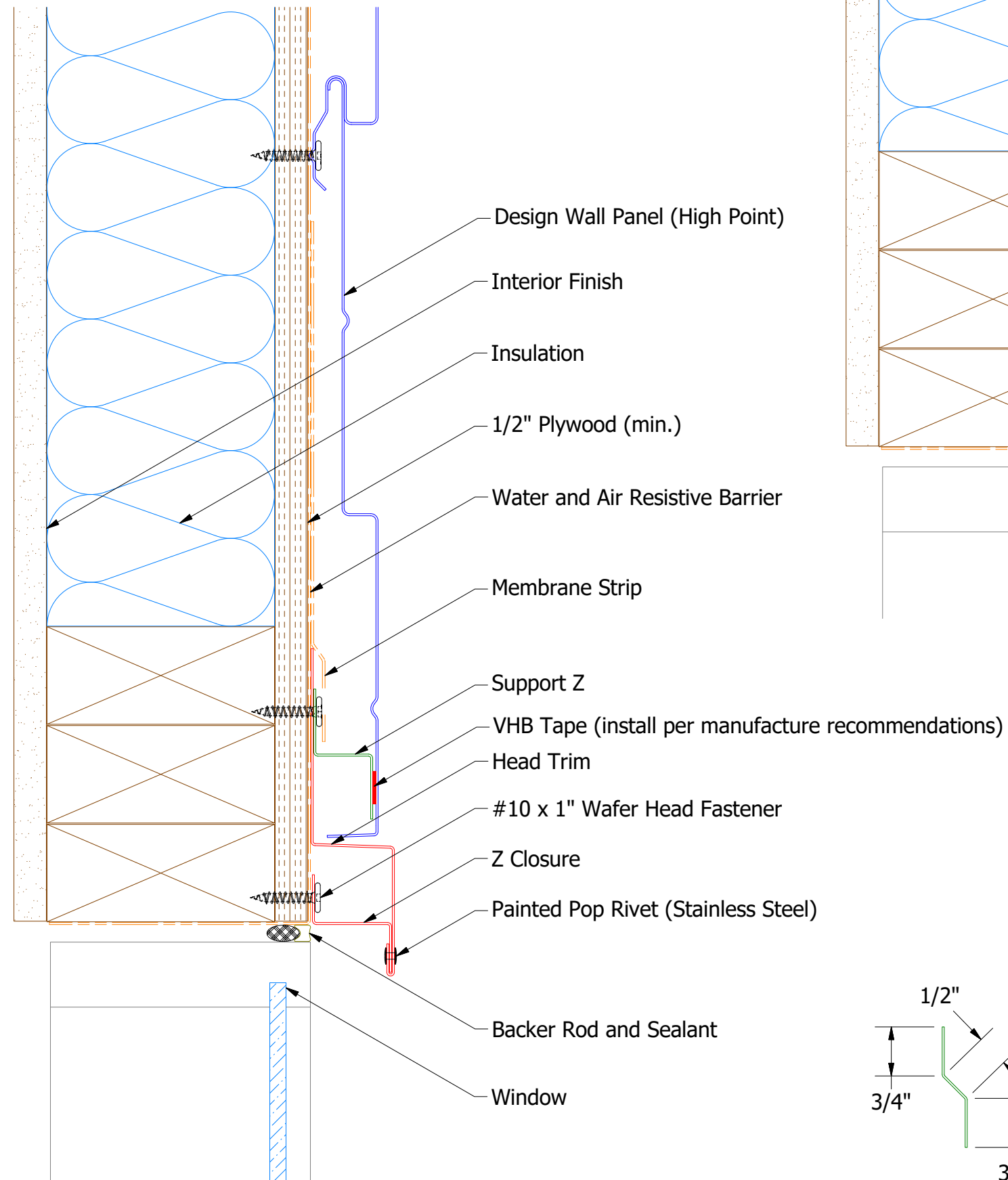
Note: * denotes color side.
Note: stainless steel pop rivets maybe needed along with VHB tape for longer panels.

REVISIONS				PROJECT INFORMATION			
REV. NO.	DATE	DESCRIPTION OF REVISION	BY	APP	TITLE	DR	DATE
02	7/22/2021	Changed Pop Rivets to VHB Tape	DMR		Design Wall Window Sill Flange Detail	DR	DATE
01	11/6/2019	Updated SKU # for Angle Trim	KRK			MBP	7/27/2018
						APP	DATE
					MATERIAL	SH. SIZE	SCALE
						B	X:X

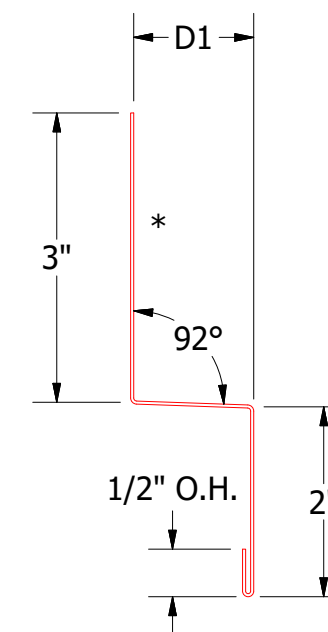


ATAS INTERNATIONAL, INC
Allentown PA
610-395-8445
Mesa AZ
480-558-7210

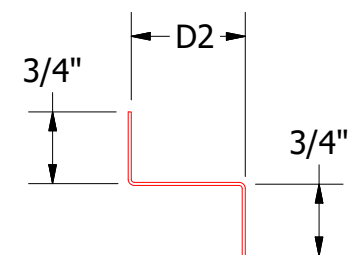
Horizontal Panel



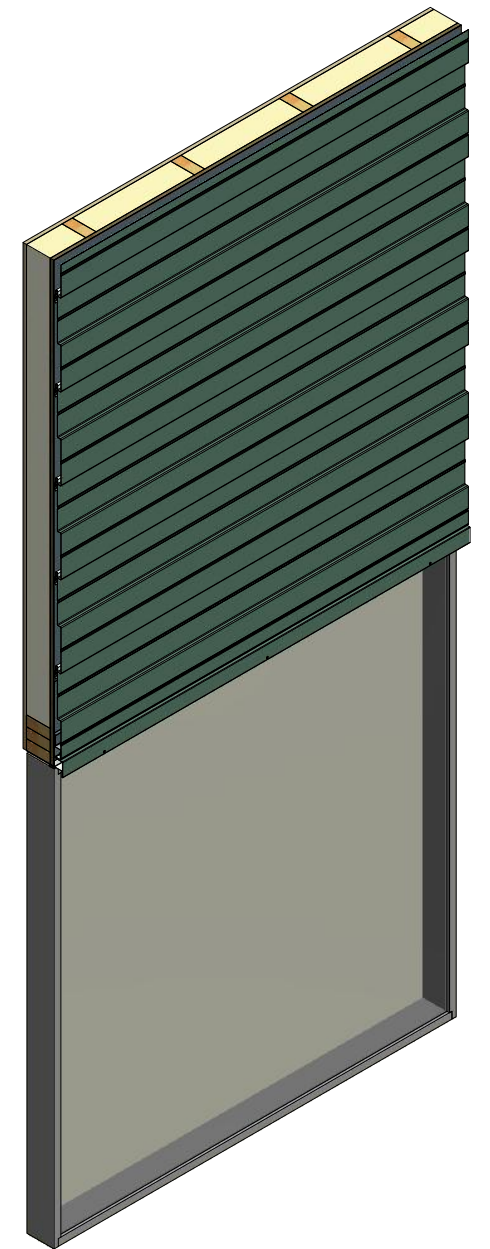
Support Z



Head Trim



Z Closure



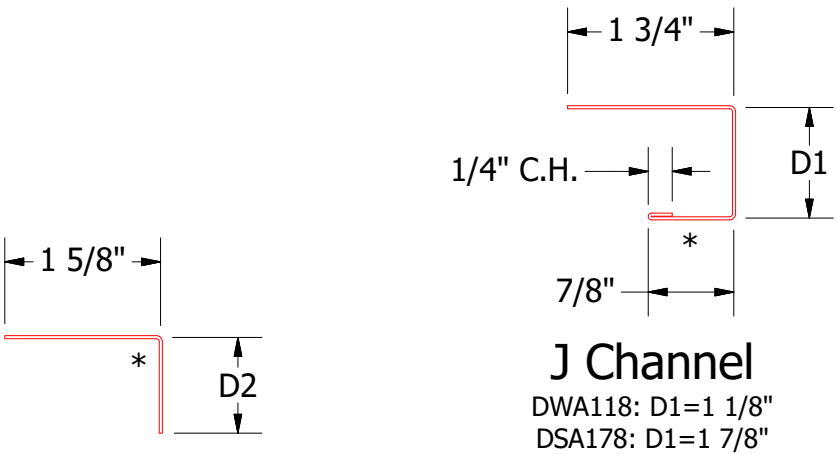
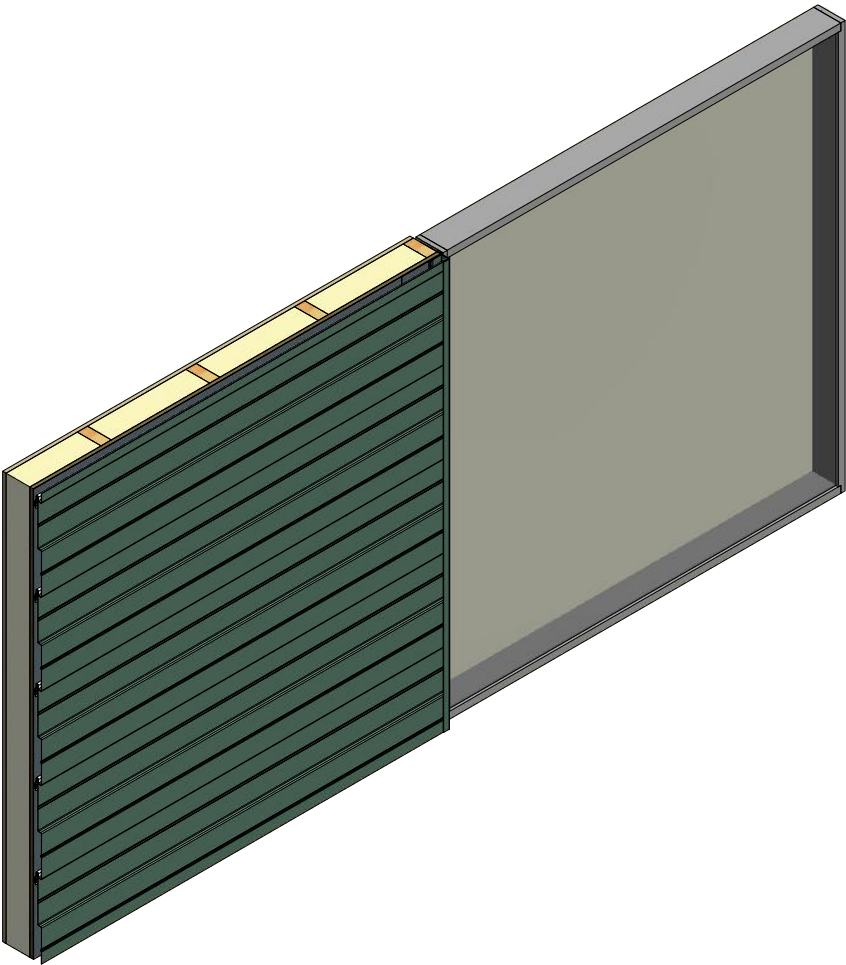
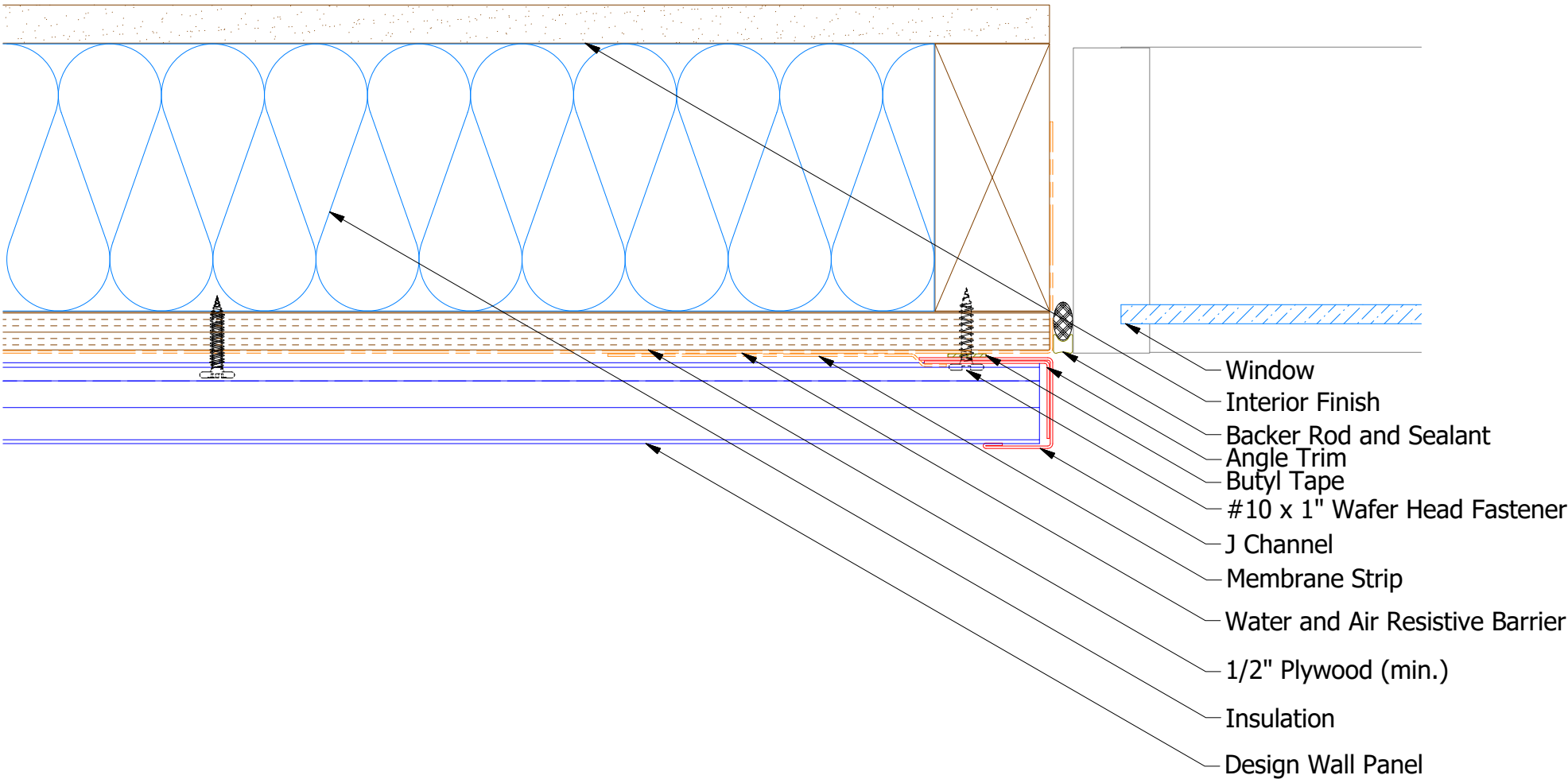
Note: * denotes color side.

Note: stainless steel pop rivets maybe needed along with VHB tape for longer panels.

DSA975/ DWA975 - Joggle Cleat

					TITLE					Design Wall Existing Head Detail						
					DWG. NO.					DR		DATE				
										DMR		7/16/2018				
1					7/16/2021					Changed Pop Rivets to VHB Tape					DMR	
										MATERIAL						
REV. NO.		DATE		DESCRIPTION OF REVISION					BY		APP		SH. SIZE		SCALE	
													B		X:X	

Horizontal Panel



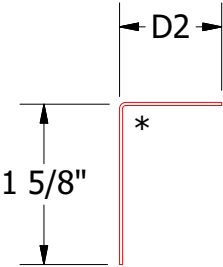
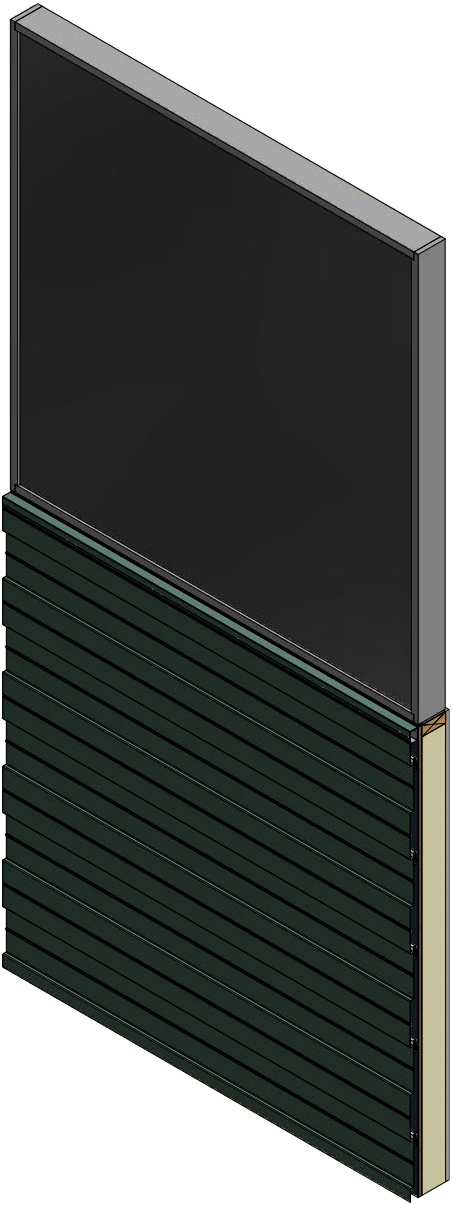
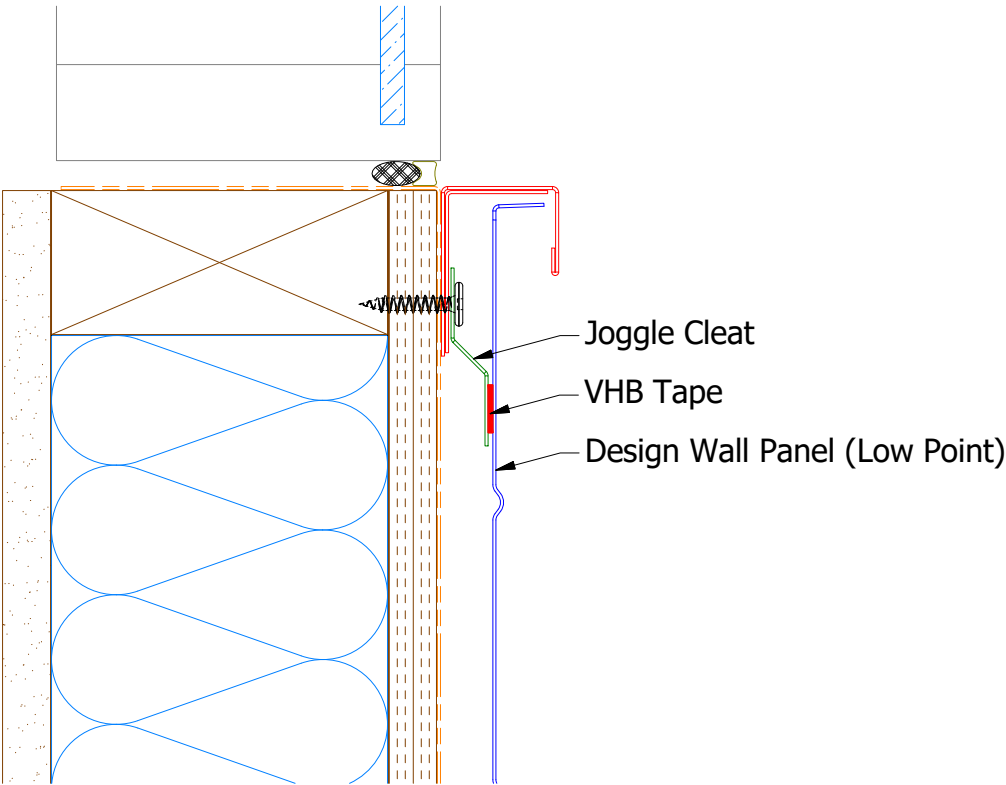
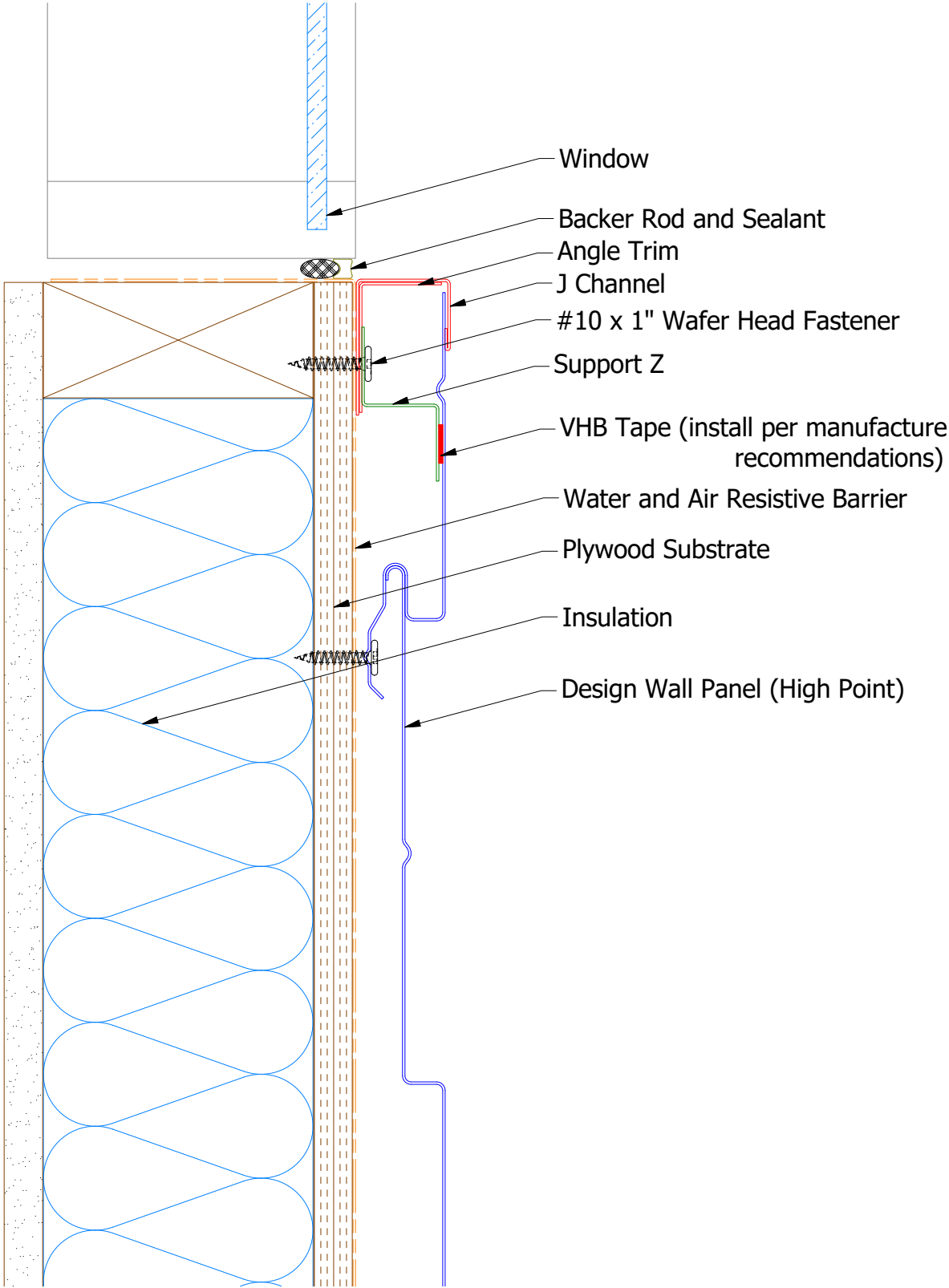
Note: * denotes color side.

REV. NO.		DATE	DESCRIPTION OF REVISION	BY	APP	TITLE		
01		7/19/2021	Changed Pop Rivets to VHB Tape	DMR		Design Wall Existing Jamb Detail		
						DWG. NO.	DR	DATE
							DMR	7/17/2018
						MATERIAL	APP	DATE
						SH. SIZE	B	SCALE
								X:X

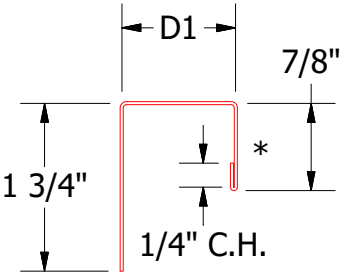


ATAS INTERNATIONAL, INC
Allentown PA
610-395-8445
Mesa AZ
480-558-7210

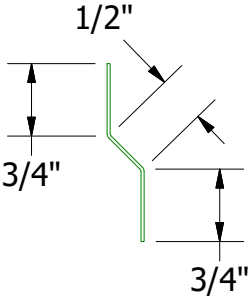
Horizontal Panel



Angle Trim
DWA680: D2=1"
DSA680: D2=1 3/4"



J Channel
DWA118: D1=1 1/8"
DSA178: D1=1 7/8"

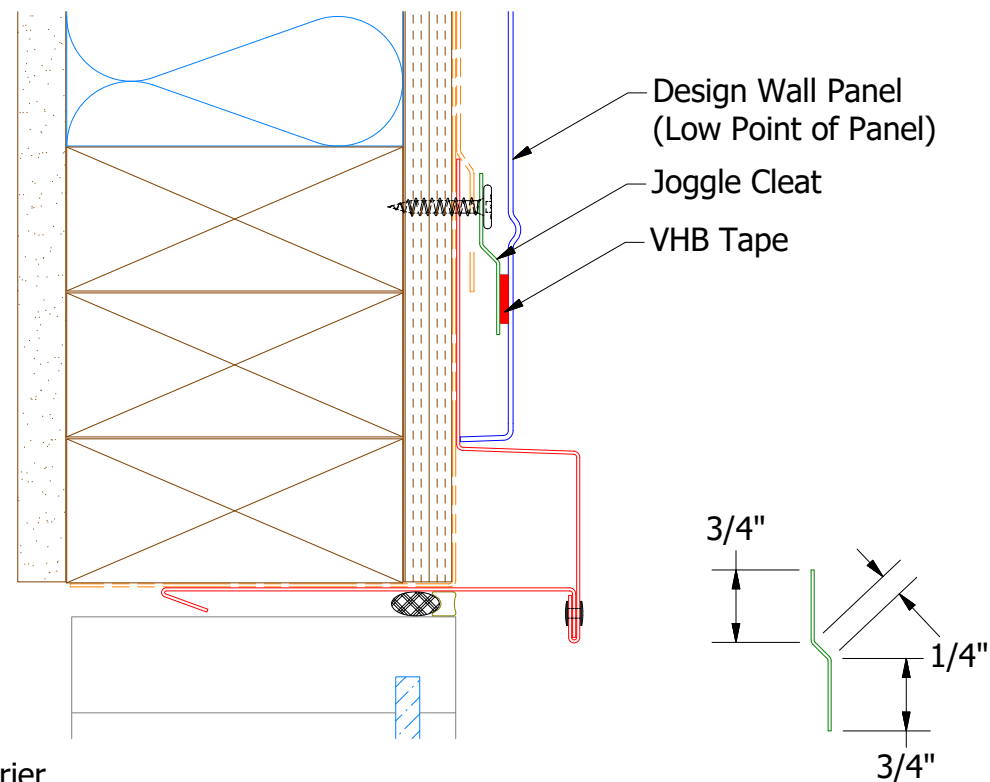
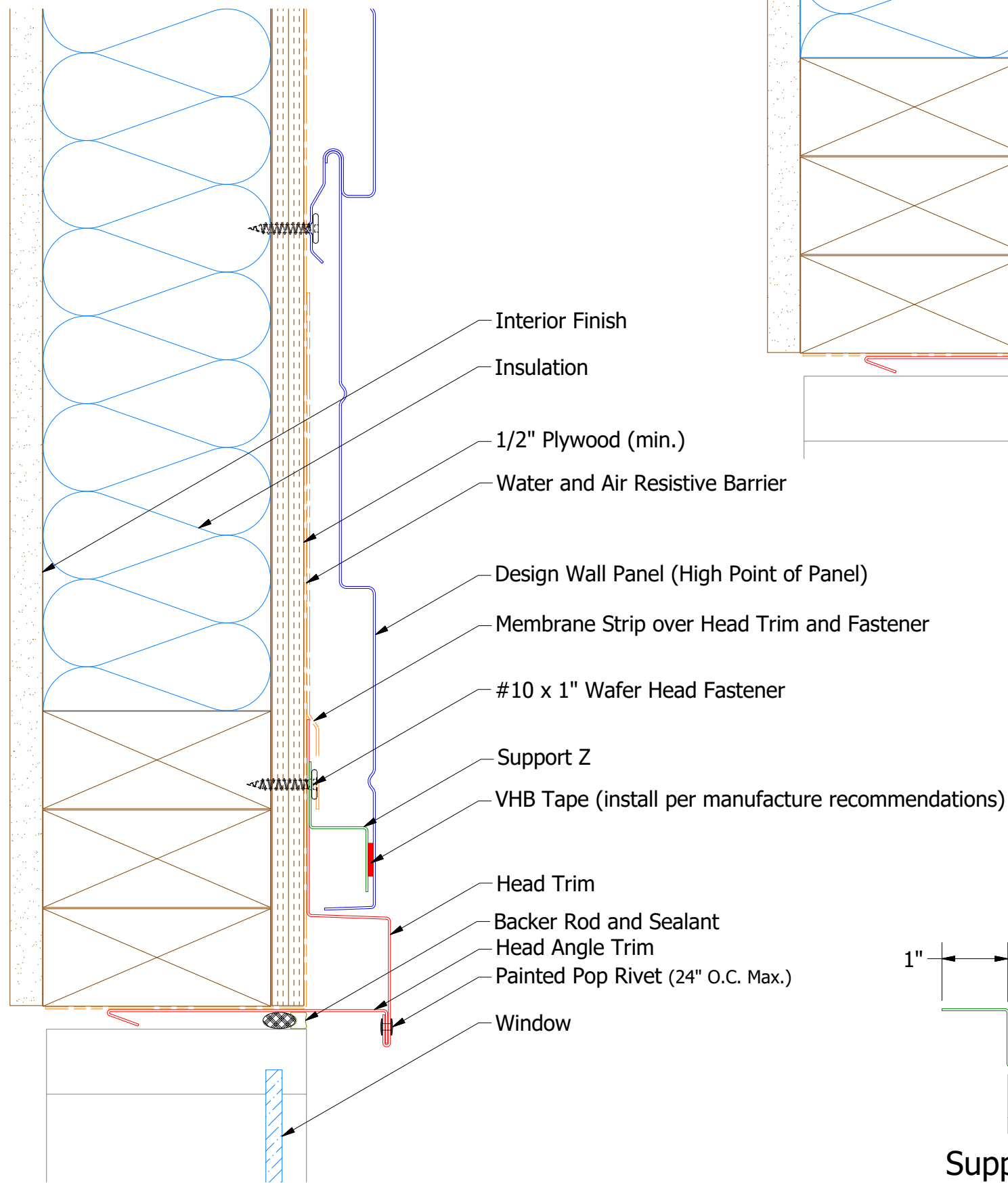


DWA975/ DSA975 - Joggle Cleat

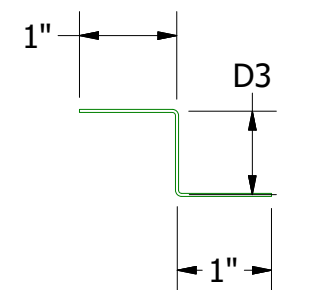
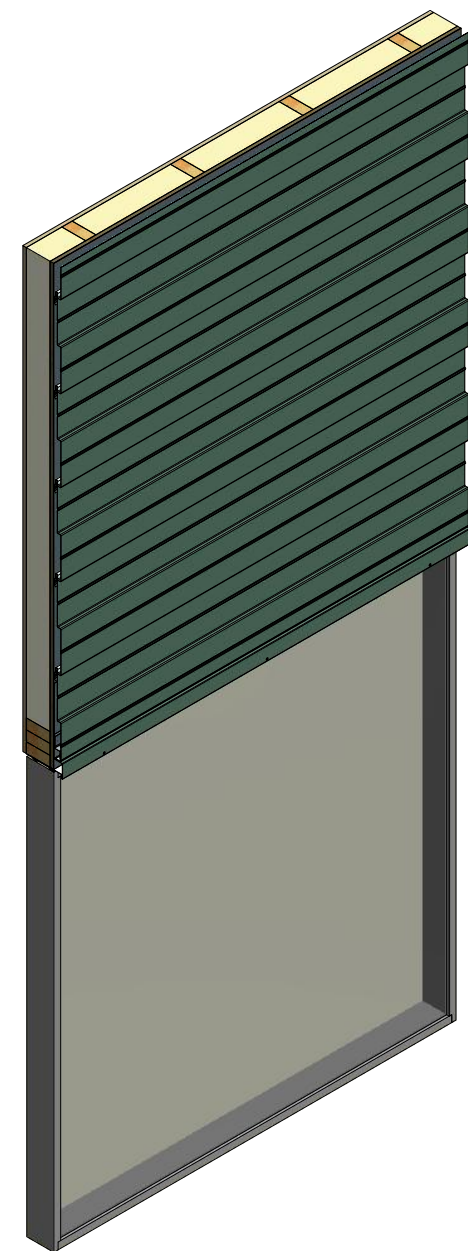
Note: * denotes color side.
Note: stainless steel pop rivets maybe needed along with VHB tape for longer panels.

				Design Wall Existing Window Sill Detail			
				DWG. NO.		DR	DATE
						DMR	7/20/2018
01	7/19/2021	Changed Pop Rivets to VHB Tape		DMR	APP		DATE
				MATERIAL			
REV. NO.	DATE	DESCRIPTION OF REVISION		BY	APP	SH. SIZE	SCALE
						B	X:X

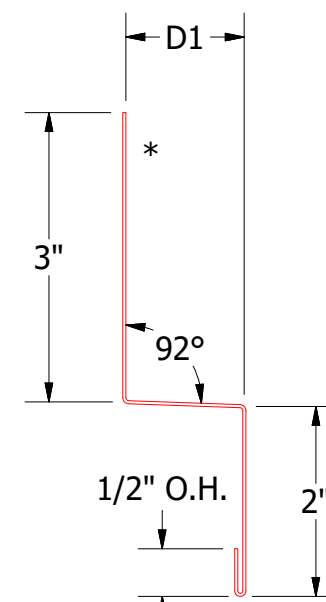
Horizontal Panel



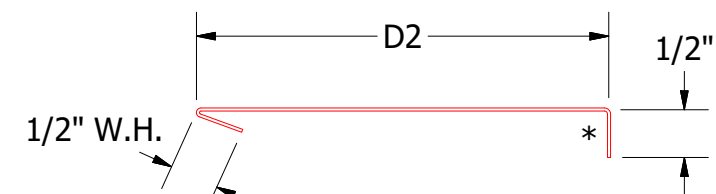
DSA975/DWA975 - Joggle Cleat



Support Z
DWA681: D3=1"
DSA681: D3=1 5/8"



Head Trim
DWA550: D1= 1 1/4"
DSA550: D1= 2"



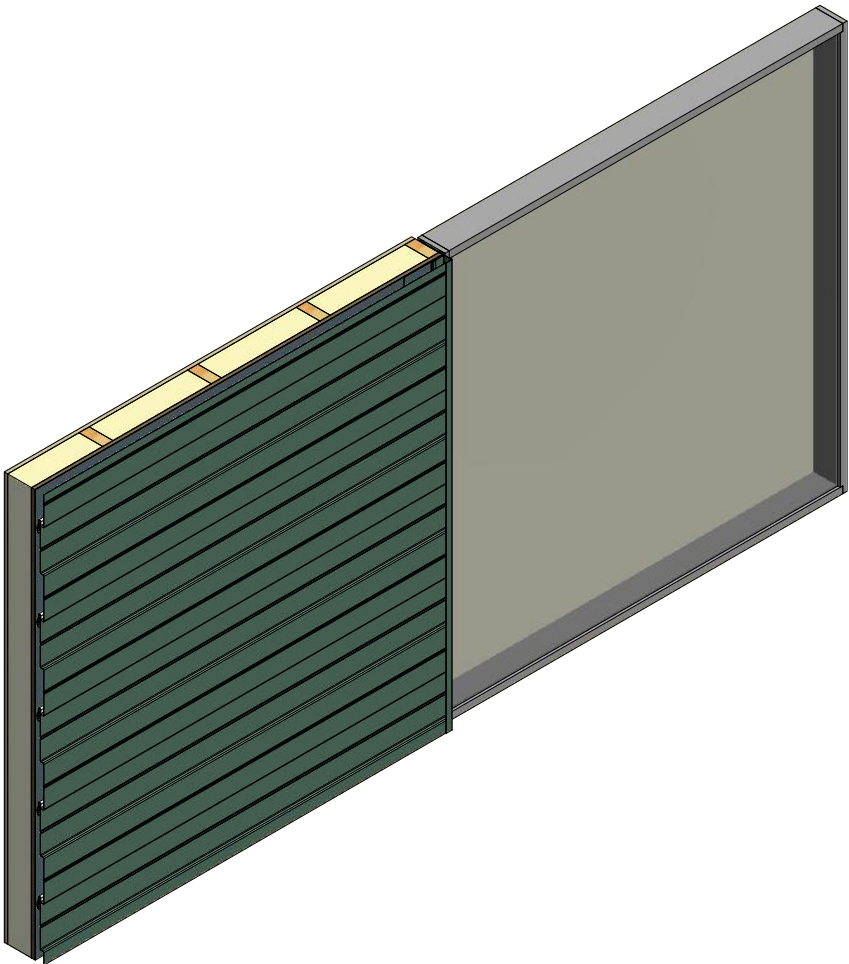
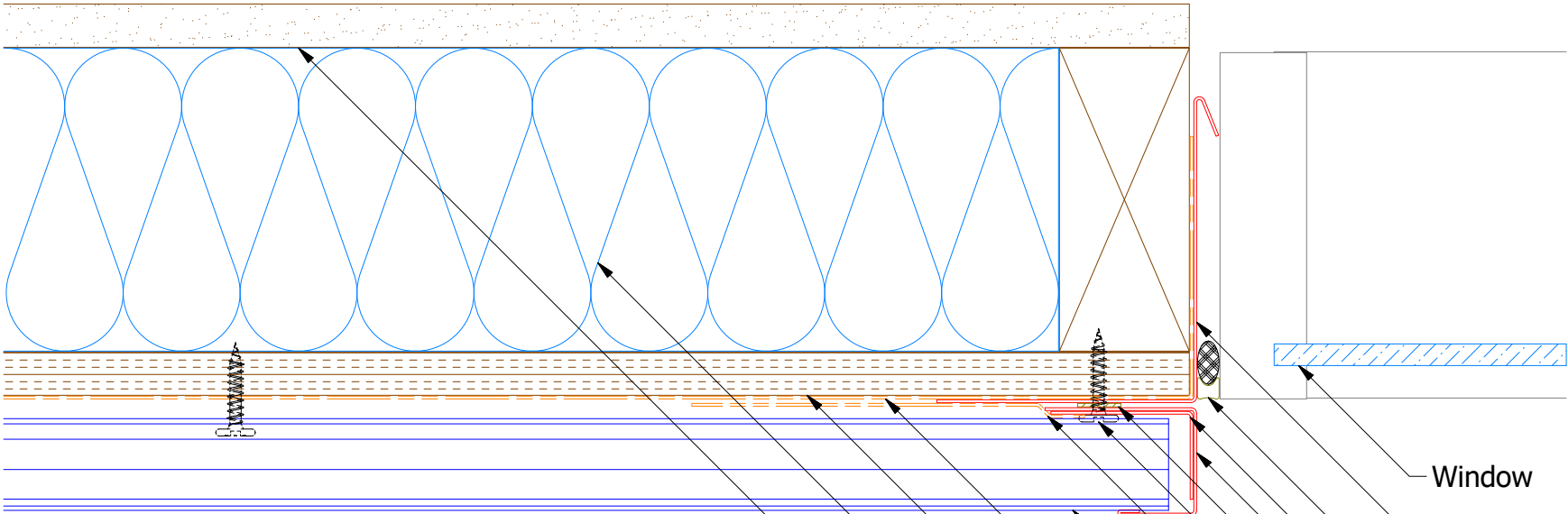
Head Angle Trim
DWA690: D2= 4 1/4"
DSA690: D2= 5"

Note: * denotes color side.
Note: stainless steel pop rivets maybe needed along with VHB tape for longer panels.

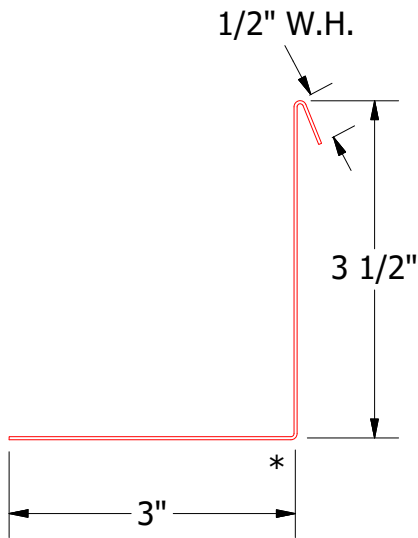
TITLE				Design Wall Head Detail			
REV. NO.	DATE	DESCRIPTION OF REVISION	BY	APP	DWG. NO.		DR
							DMR
1	7/14/2021	Changed Pop Rivets to VHB Tape	DMR				DATE
					MATERIAL		DATE
							7/26/16
					SH. SIZE		SCALE
					B		X:X

ATAS
ATAS INTERNATIONAL, INC
Allentown PA
610-395-8445
Mesa AZ
480-558-7210

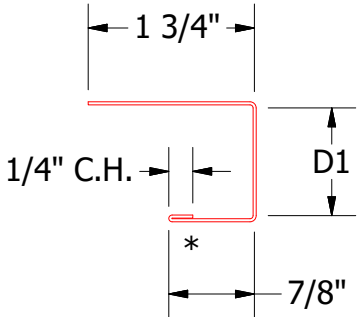
Horizontal Panel



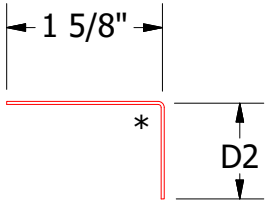
- Window
- Angle Trim With Return
- Backer Rod and Sealant
- Angle Trim
- J Channel
- Butyl Tape
- #10 x 1" Wafer Head Screw
- Membrane Strip over J Channel and Angle Trim
- Design Wall Panel
- Water and Air Resistive Barrier
- 1/2" Plywood (min.)
- Insulation
- Interior Finish



DWA683/DSA683 - Angle Trim With Return



J Channel
DWA118: D1= 1 1/8"
DSA178: D1= 1 7/8"



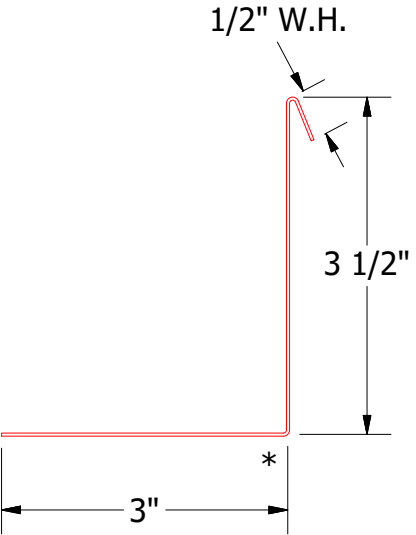
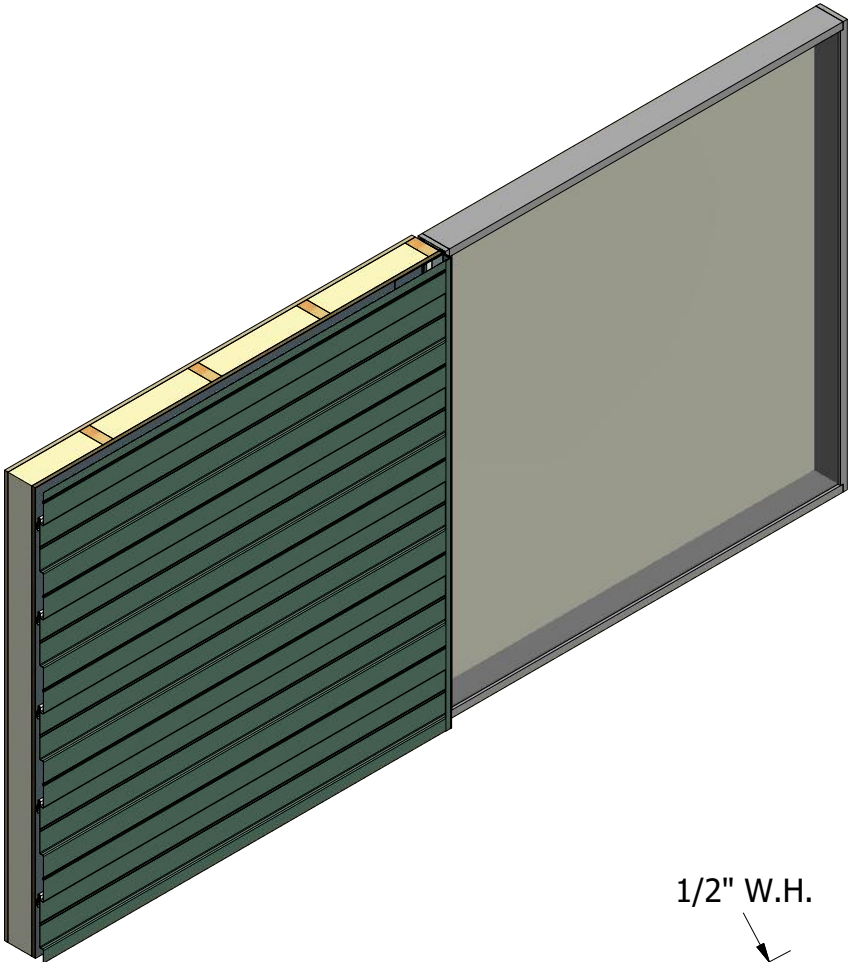
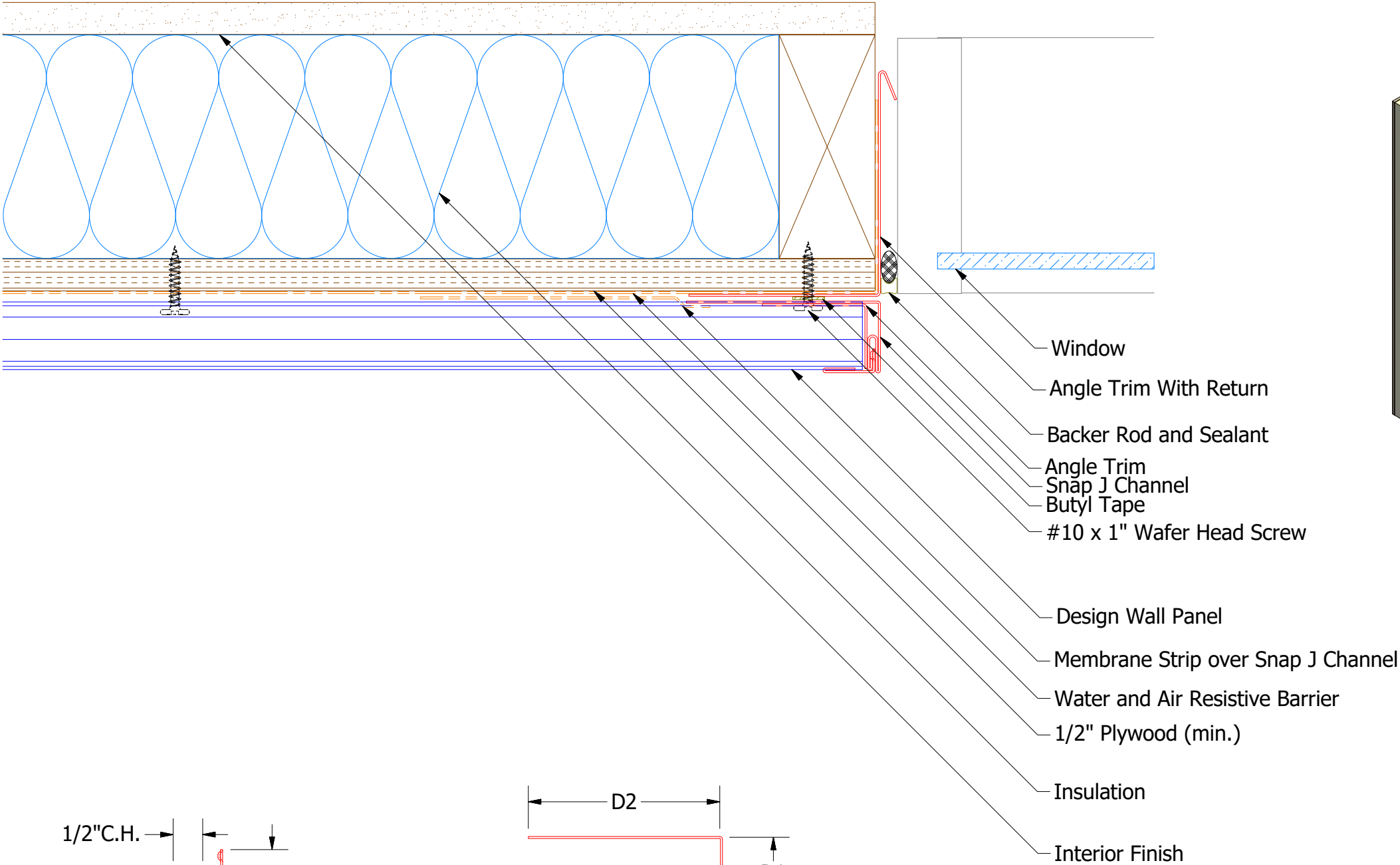
Angle Trim
DWA680: D2= 1"
DSA680: D2= 1 3/4"

Note: * denotes color side.

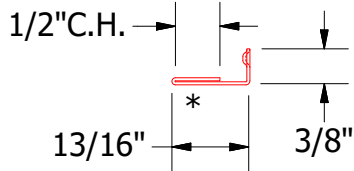
TITLE				Design Wall Jamb Detail			
02	7/19/2021	Changed Pop Rivets to VHB Tape	DMR	DWG. NO.	DR	DMR	DATE 6/27/2016
01	11/6/2019	Updated SKU # for Angle Trim	KRK	MATERIAL	APP	DAS	DATE 7/26/16
REV. NO.	DATE	DESCRIPTION OF REVISION	BY	APP	SH. SIZE	B	SCALE X:X

ATAS INTERNATIONAL, INC
Allentown PA
610-395-8445
Mesa AZ
480-558-7210

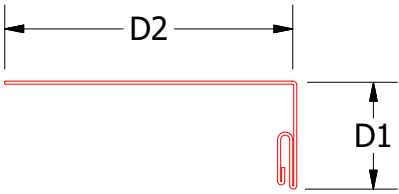
Horizontal Panel - Alternate



DWA683/DSA683 - Angle Trim With Return



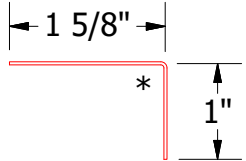
UNS078 - Snap J Cover



Snap J Base*

DSA179: D1=1 7/8" ,D2=2 1/2"

DWA159: D1=1 1/8" ,D2=3"



Angle Trim

DWA680: D2= 1"

DSA680: D2= 1 3/4"

Note: * denotes color side.

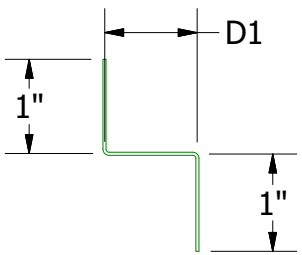
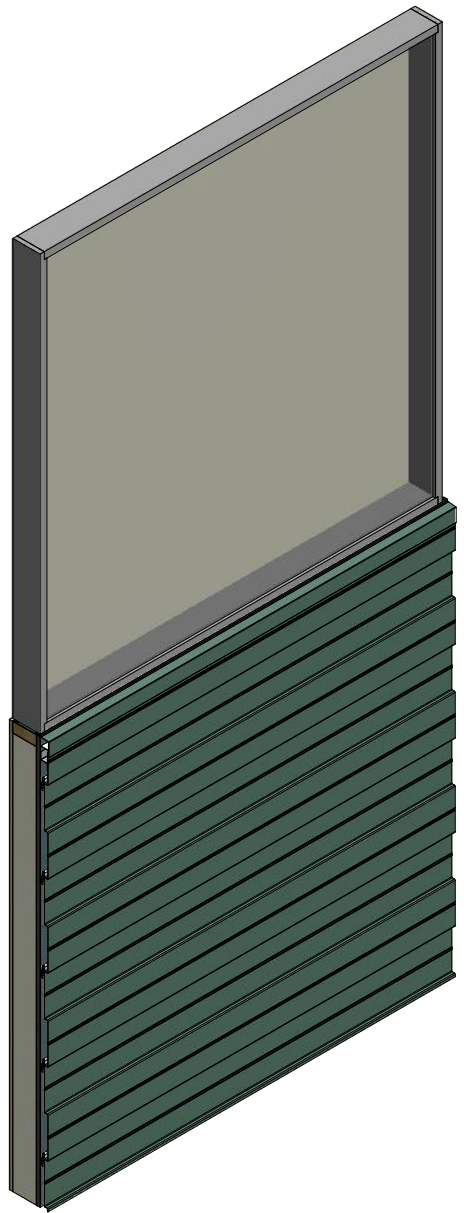
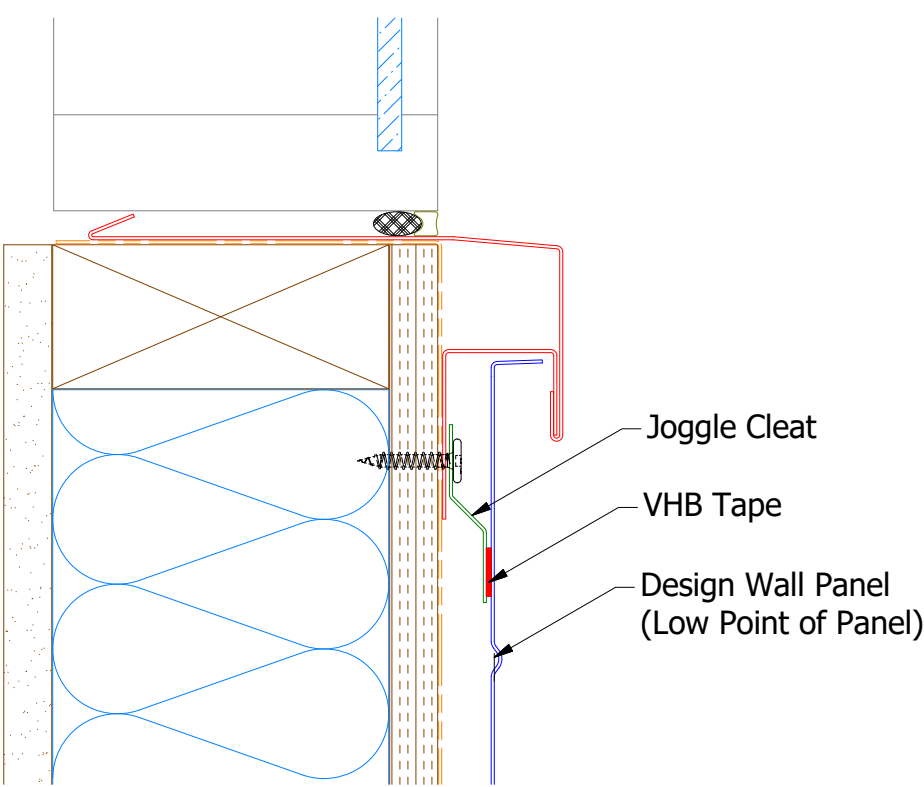
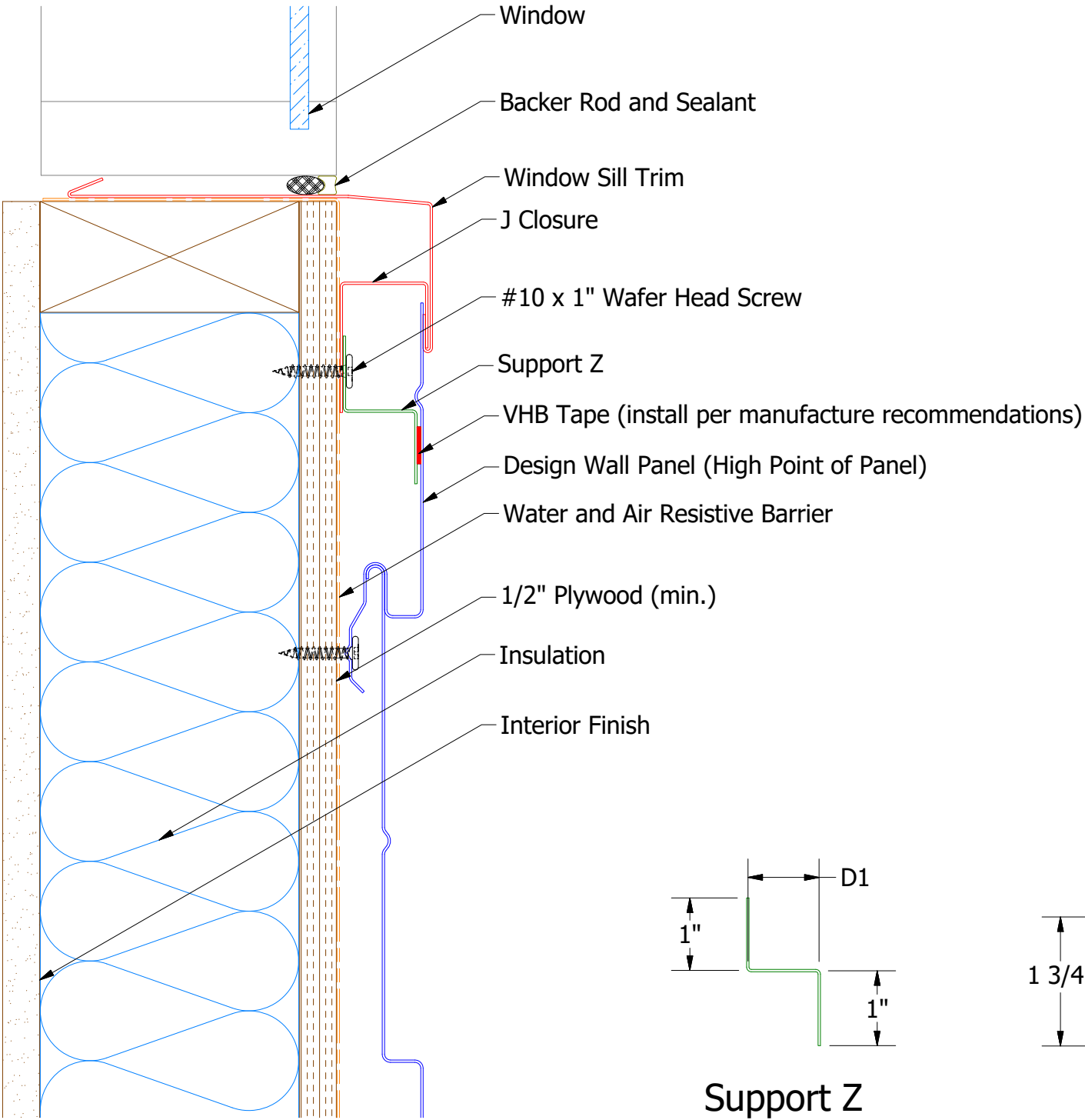
REV. NO.				DATE				DESCRIPTION OF REVISION				BY				APP			
TITLE				DR				DATE				MATERIAL				SH. SIZE			
DWA680/DSA680 - Angle Trim				DMR				6/27/2016				DAS				B			
DWA683/DSA683 - Angle Trim With Return				DAS				7/26/16				SCALE				X:X			



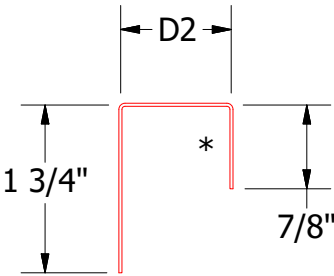
ATAS INTERNATIONAL, INC
Allentown PA
610-395-8445
Mesa AZ
480-558-7210

Design Wall Jamb Alt Detail

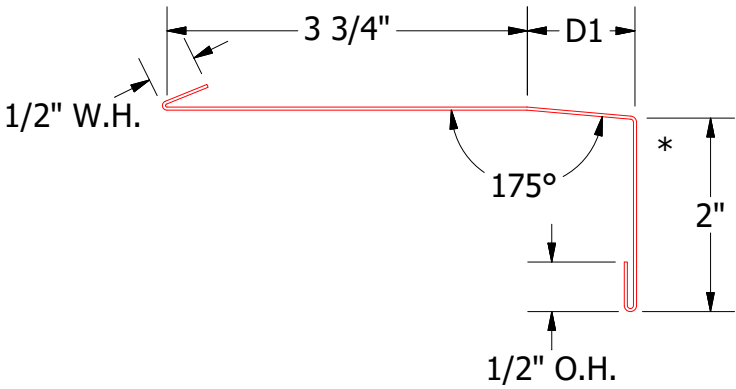
Horizontal Panel



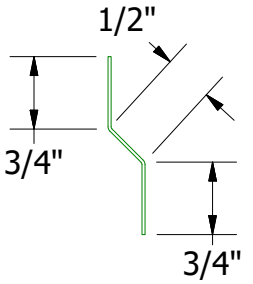
Support Z
DWA681: D3= 1"
DSA681: D3= 1 5/8"



J Closure
DWA270: D2= 1 1/8"
DSA270: D2= 1 7/8"



Window Sill Trim
DWA670: D1= 1 1/8"
DSA670: D1= 1 7/8"



DWA975/DSA975 - Joggle Cleat

Note: * denotes color side.
Note: stainless steel pop rivets maybe needed along with VHB tape for longer panels.

REVISIONS					APPROVALS				
REV. NO.	DATE	DESCRIPTION OF REVISION	BY	APP	DWG. NO.			DR	DATE
01	7/19/2021	Changed Pop Rivets to VHB Tape	DMR		MATERIAL			DMR APP	6/29/2016
								DAS	7/26/16
								SH. SIZE	SCALE
								B	X:X