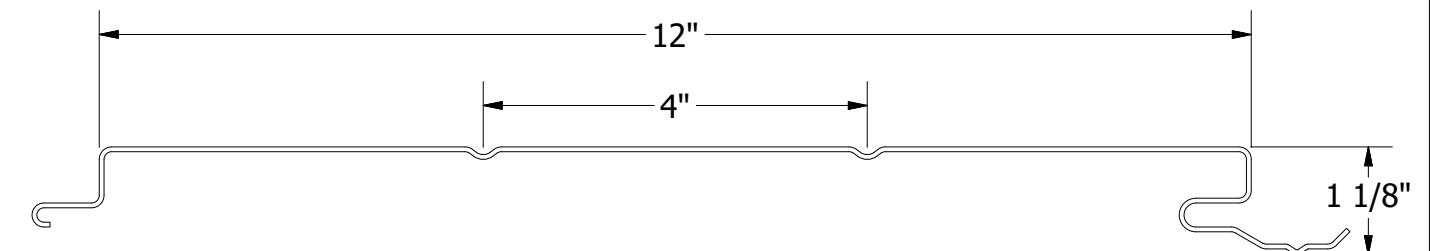
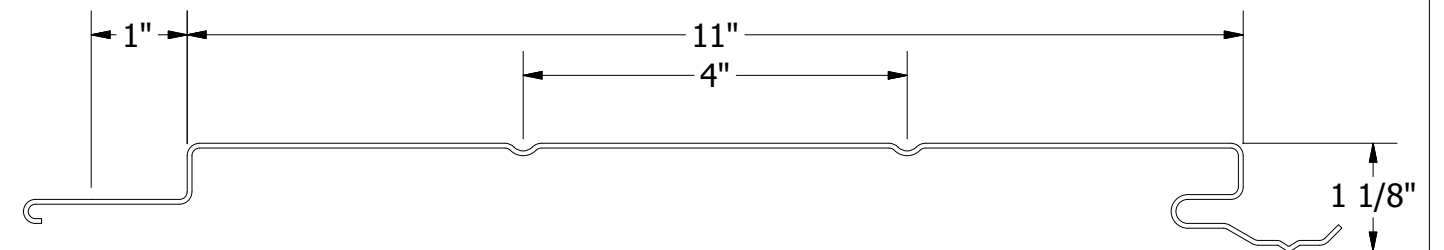
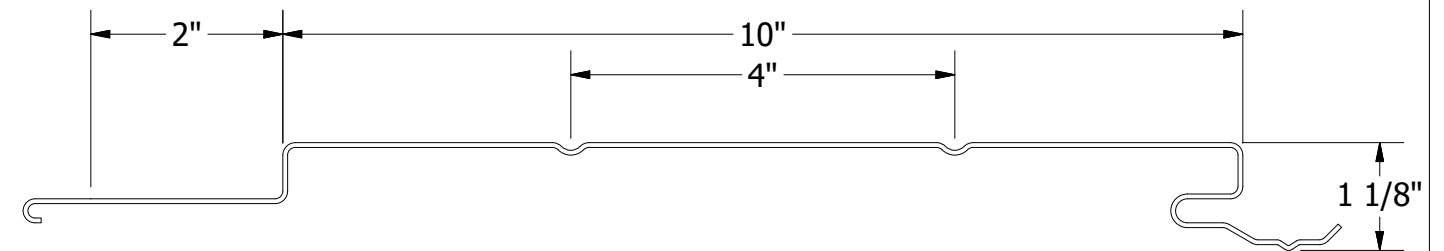
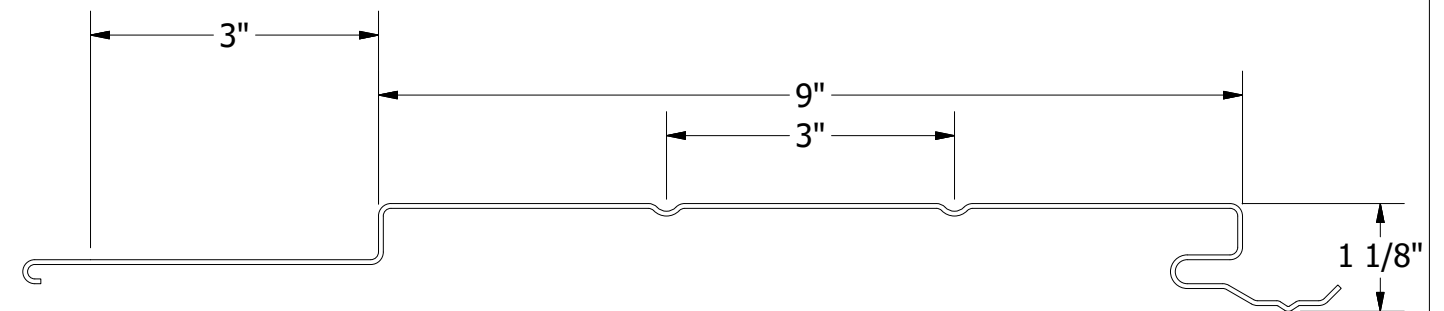
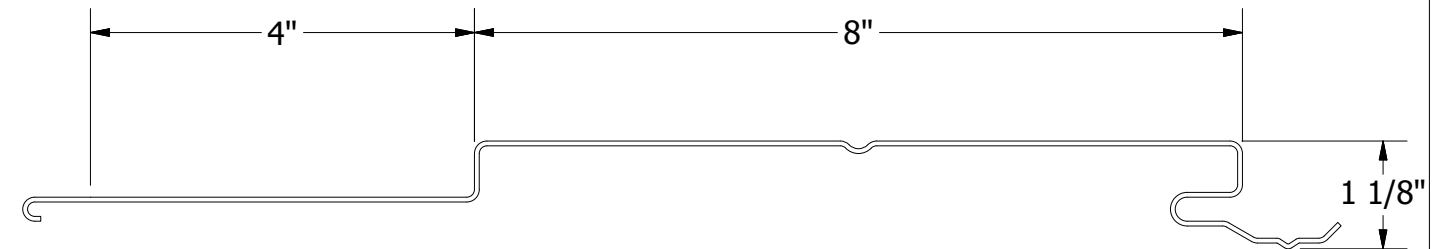
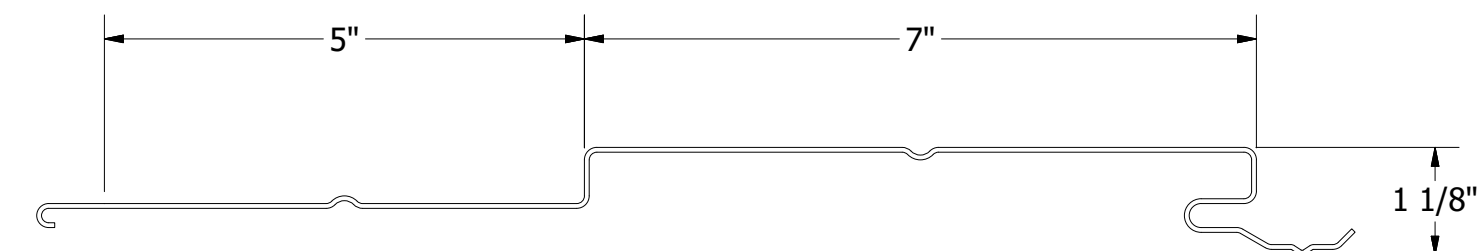
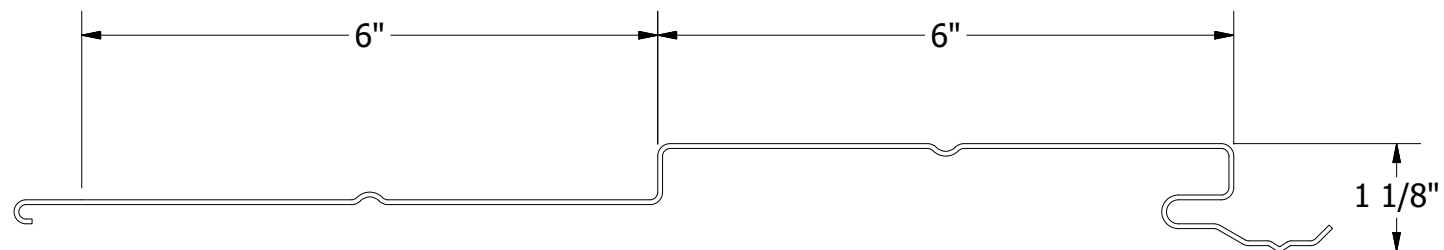
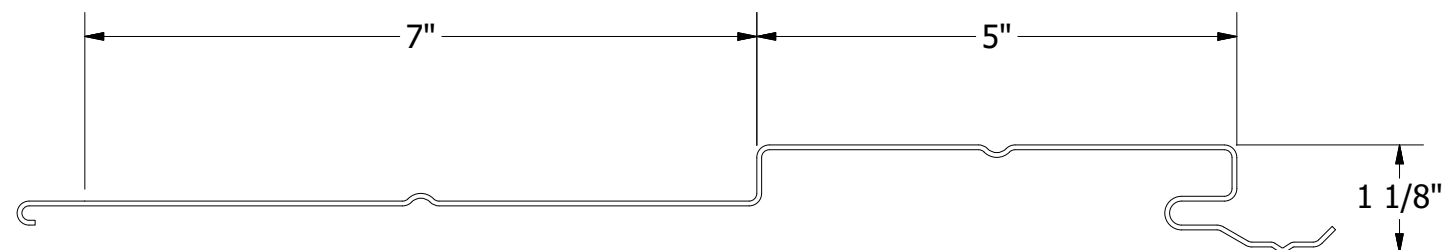
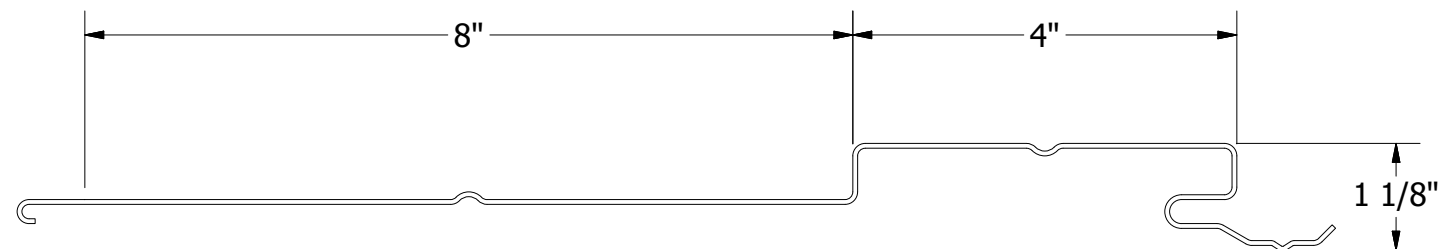
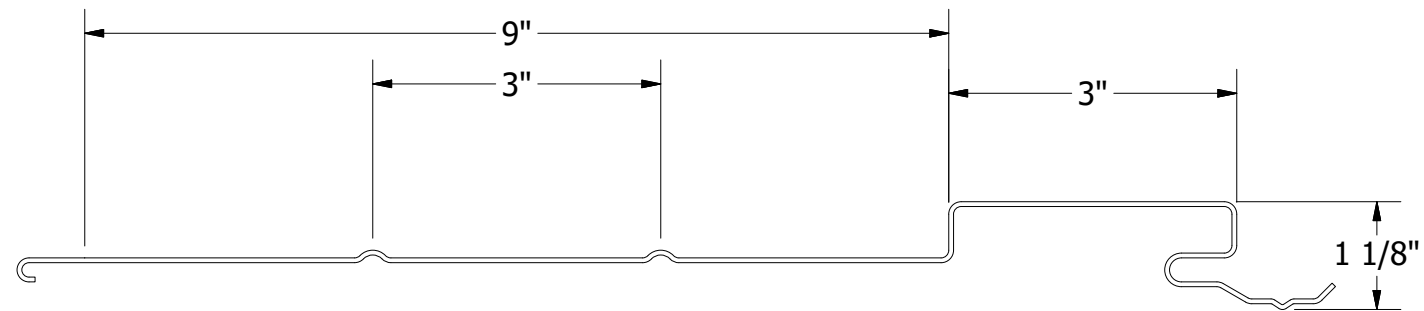
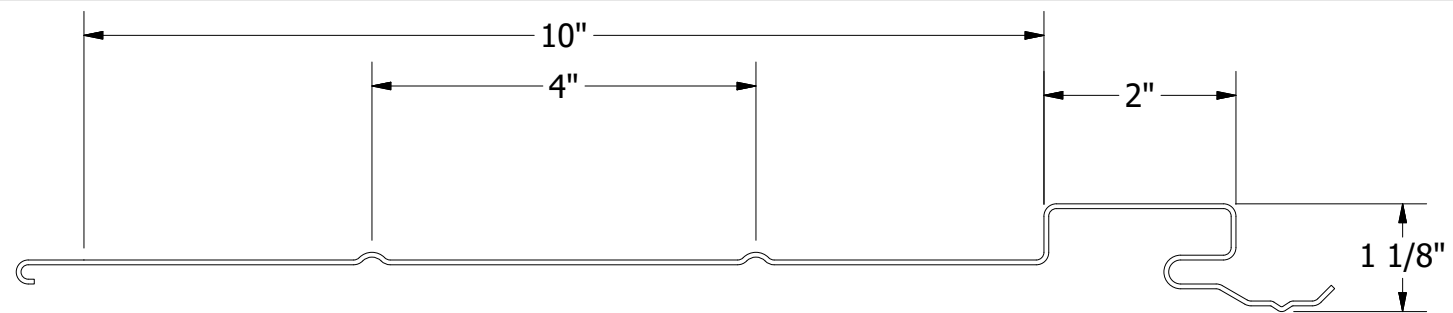
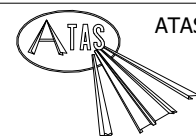


DSF & DSH Design Wall Panels

					Design Wall Panel Profile Detail						
					DWG. NO.			DR	KRK	DATE	7/26/2016
					MATERIAL			APP	DAS	DATE	7/26/2016
REV. NO.	DATE	DESCRIPTION OF REVISION		BY				APP	SH. SIZE	B	SCALE

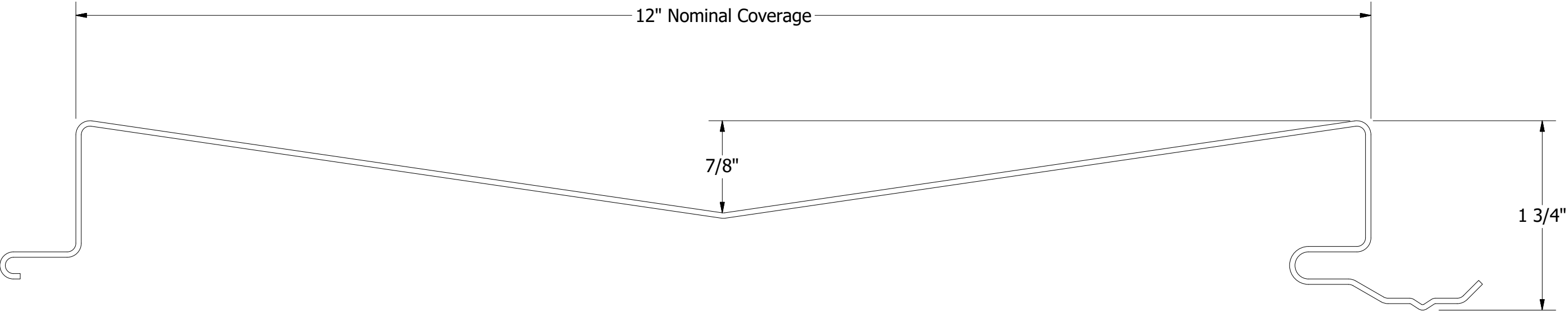


DWF & DWH Design Wall Panels




ATAS INTERNATIONAL, INC
 Allentown PA
 610-395-8445
 Mesa AZ
 480-558-7210

						TITLE						
								Design Wall Panel Profile Detail				
						DWG. NO.			DR	KRK	DATE	7/26/2016
									APP	DAS	DATE	7/26/2016
						MATERIAL			SH. SIZE	B	SCALE	X:X
REV. NO.	DATE	DESCRIPTION OF REVISION				BY	APP					



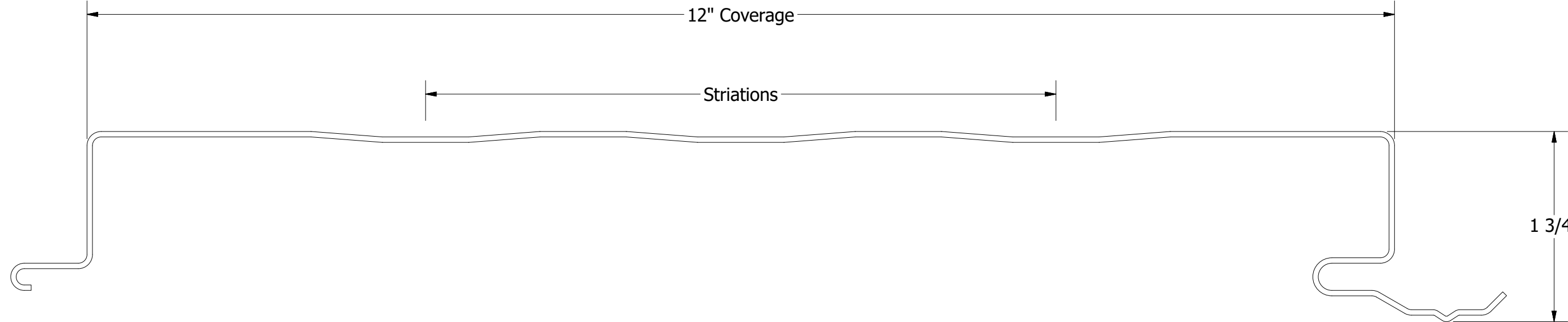
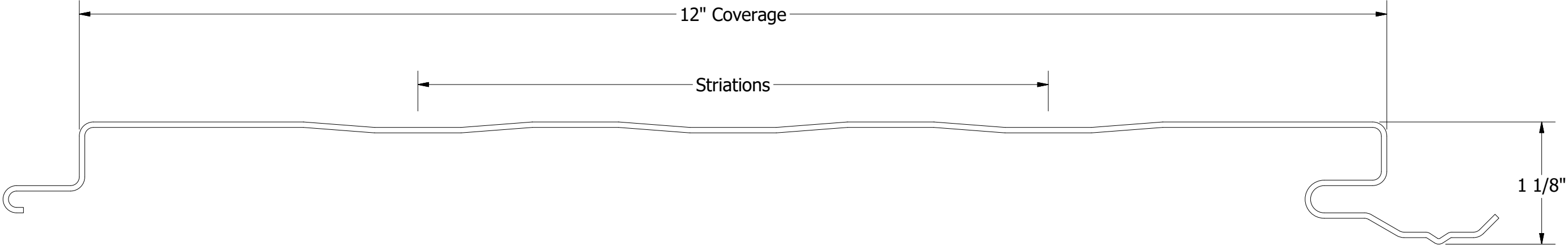
DSV120 - Design Wall Panel

Minimum Length: 3'-0"
Maximum Length: 26'-0"

					TITLE			
					Design Wall Panel Profile Detail			
					DWG. NO.		DR KRK	DATE 7/26/2016
							APP DAS	DATE 7/26/2016
REV. NO.	DATE	DESCRIPTION OF REVISION	BY	APP	MATERIAL		SH. SIZE B	SCALE X:X



ATAS INTERNATIONAL, INC
Allentown PA
610-395-8445
Mesa AZ
480-558-7210

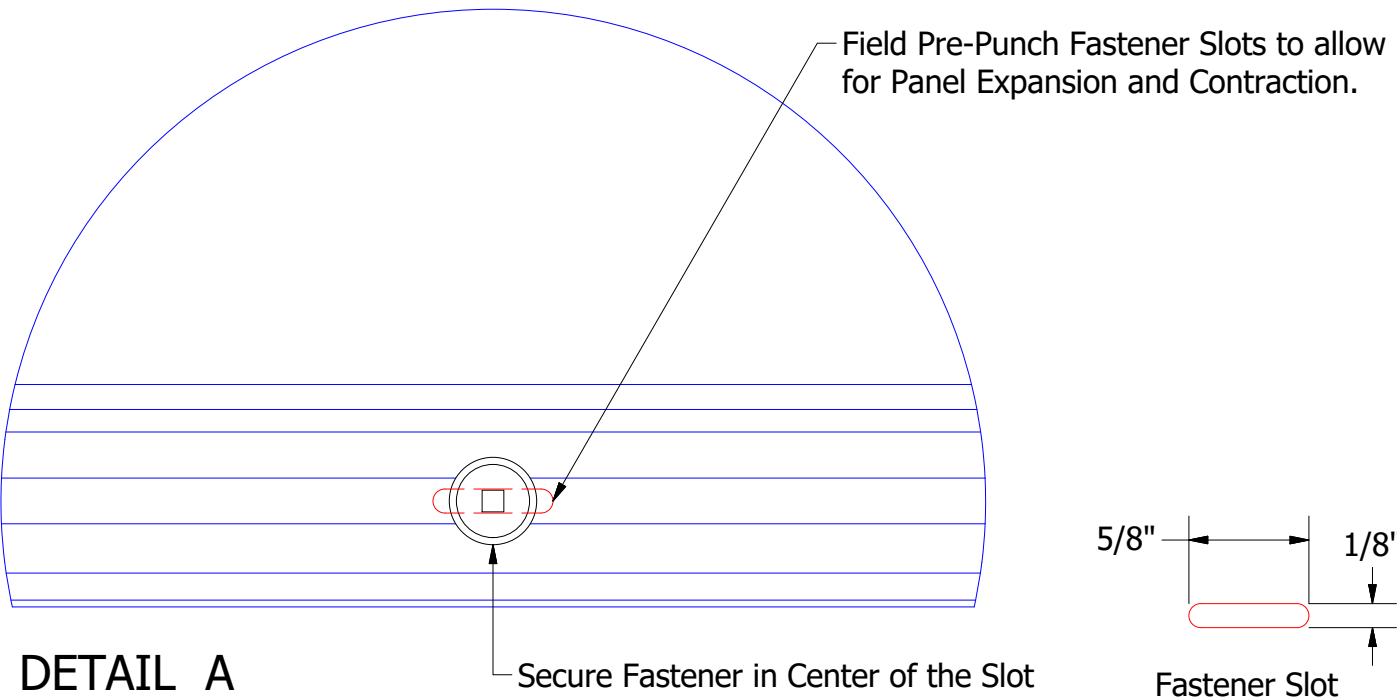
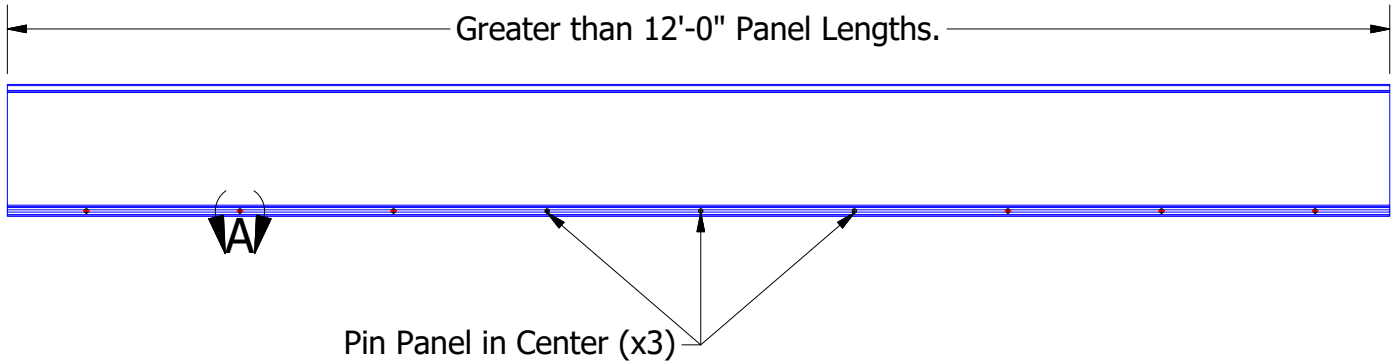


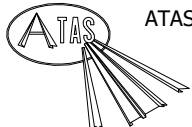
Minimum Length: 6'-0"
Maximum Length: 26'-0"

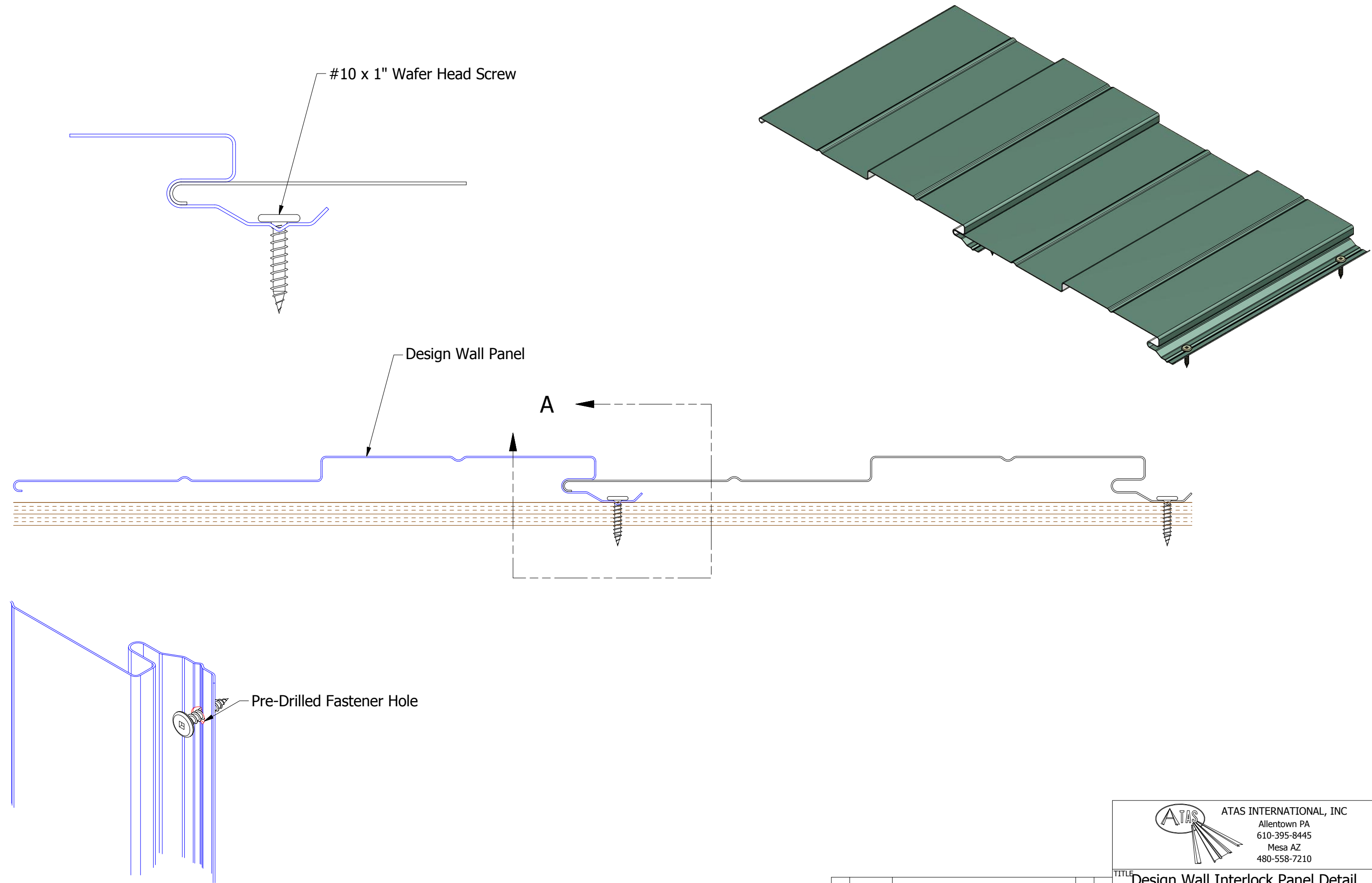
						TITLE		
						Design Wall Panel Profile Detail		
						DWG. NO.	DR KRK	DATE 7/26/2016
							APP DAS	DATE 7/26/2016
REV. NO.	DATE	DESCRIPTION OF REVISION	BY	APP		MATERIAL		
						SH. SIZE	B	SCALE X:X



ATAS INTERNATIONAL, INC
Allentown PA
610-395-8445
Mesa AZ
480-558-7210

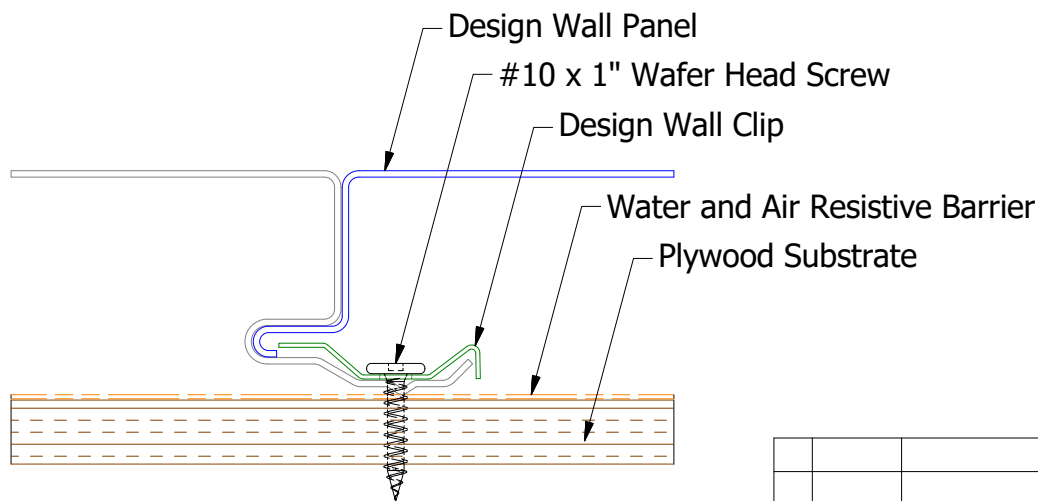
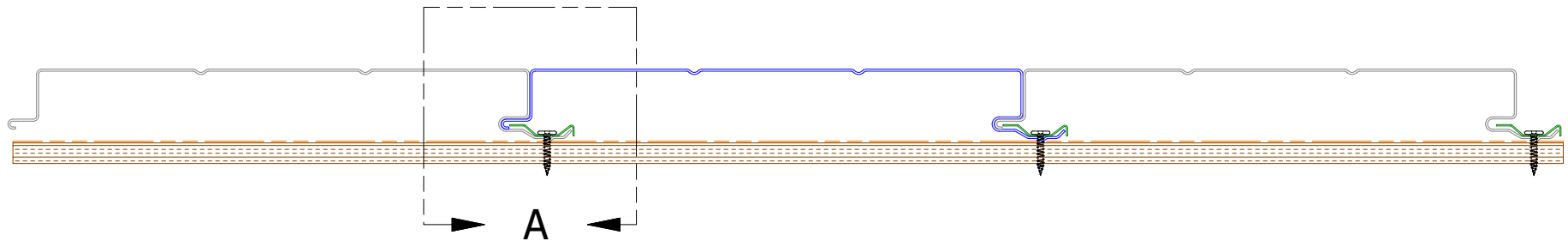
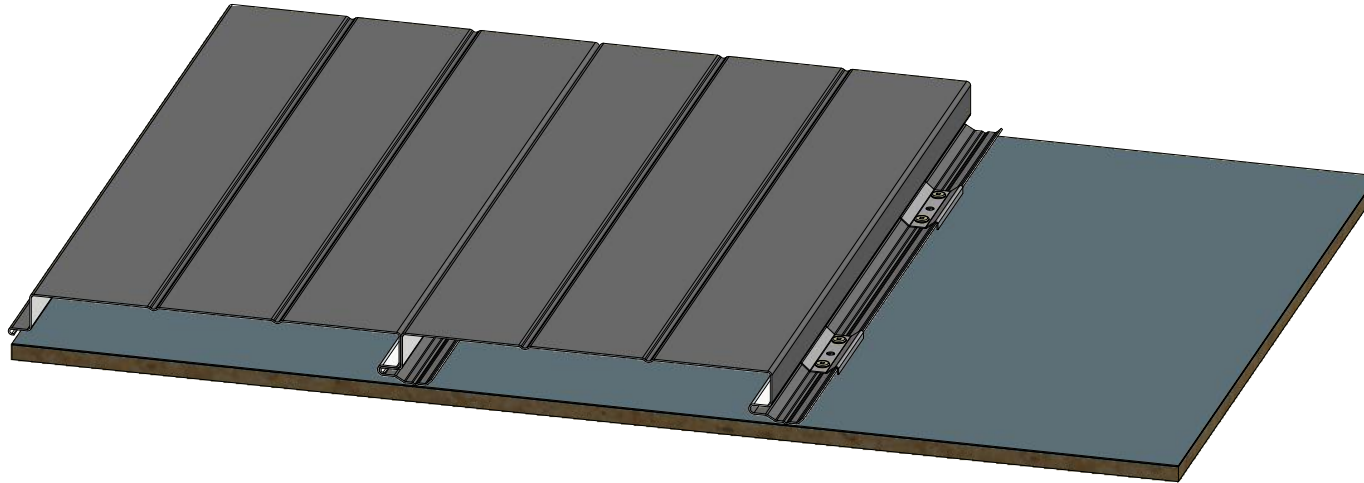


				 ATAS INTERNATIONAL, INC Allentown PA 610-395-8445 Mesa AZ 480-558-7210			
				TITLE Design Wall Fastener Slots Detail			
				DWG. NO.		DR DMR	DATE 5/12/2021
				MATERIAL		APP	DATE
REV. NO.	DATE	DESCRIPTION OF REVISION	BY	APP	SH. SIZE A		SCALE X:X

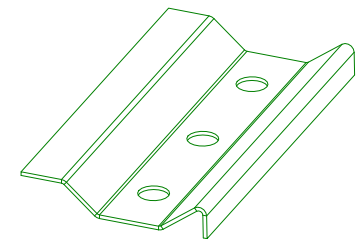


Pre-Drill Fastener Holes for Panels Greater than 20'-0" in Length.

						Design Wall Interlock Panel Detail		
						DWG. NO.	DR DMR	DATE 10/4/2016
						MATERIAL	APP	DATE
REV. NO.	DATE	DESCRIPTION OF REVISION		BY	APP	SH. SIZE B	SCALE X:X	



DETAIL A



Design Wall Clip

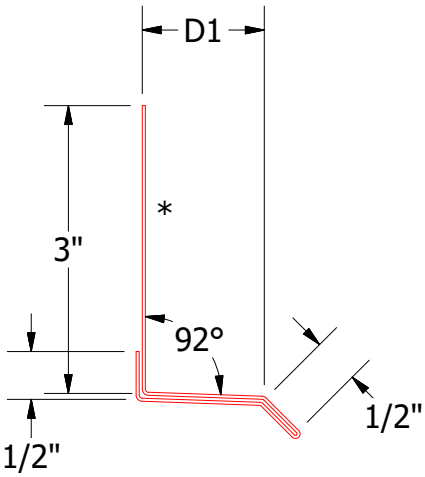
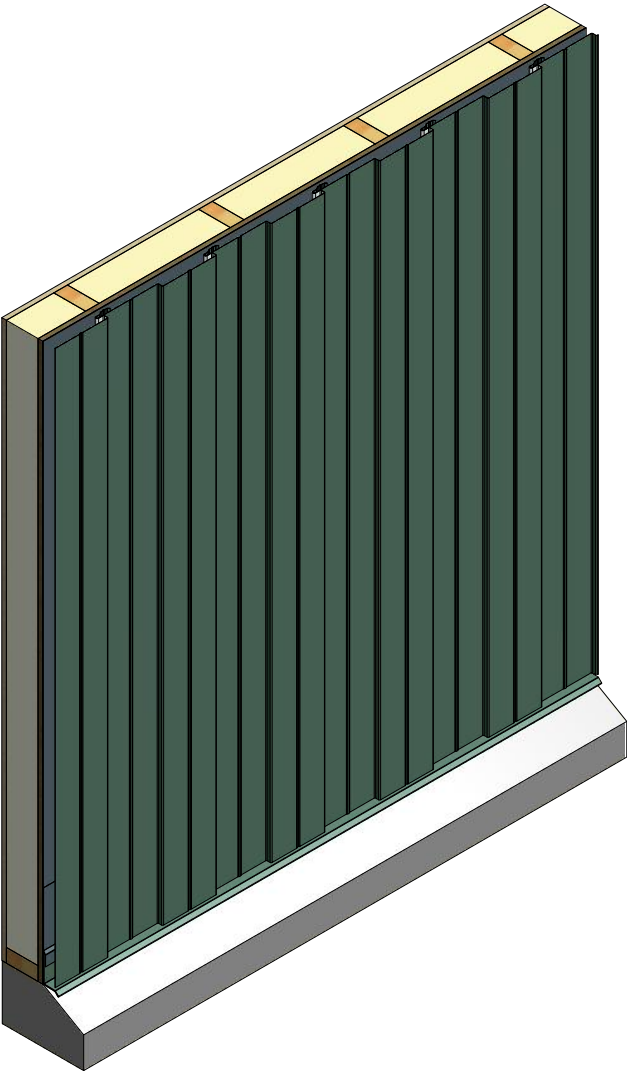
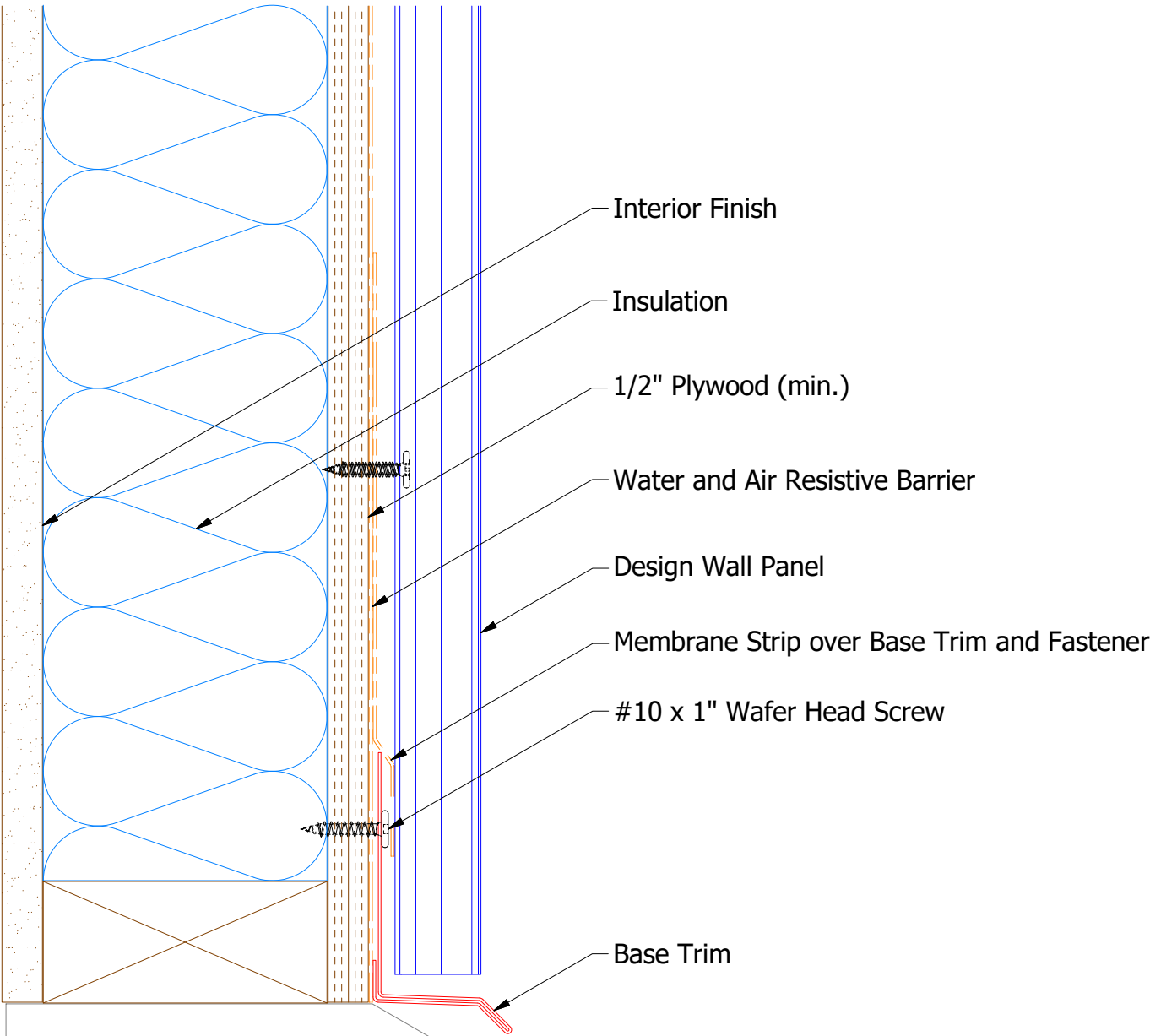


ATAS INTERNATIONAL, INC
Allentown PA
610-395-8445
Mesa AZ
480-558-7210

TITLE		Design Wall Clip Detail	
DWG. NO.		DR	DATE
		KRK	3/18/2021
MATERIAL		APP	DATE
		SH. SIZE	SCALE
		A	X:X

REV. NO.	DATE	DESCRIPTION OF REVISION	BY	APP

Vertical Panel



Base Trim
DWA661: D1=1 1/4"
DSA661: D1=2"

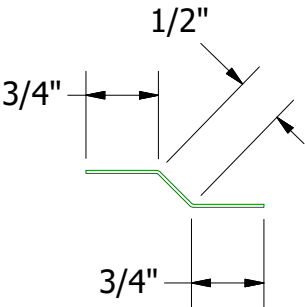
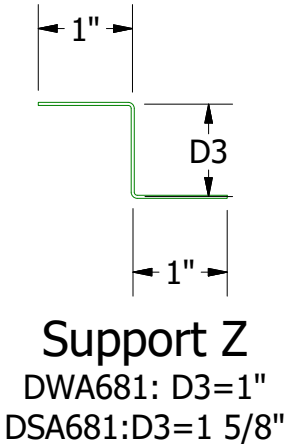
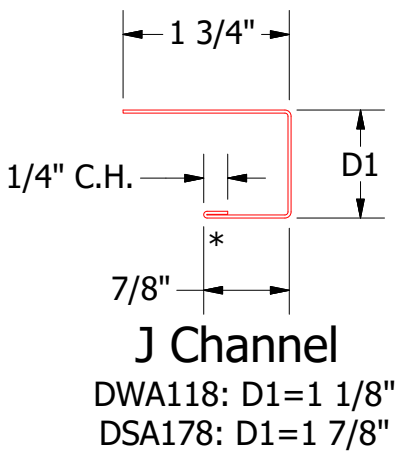
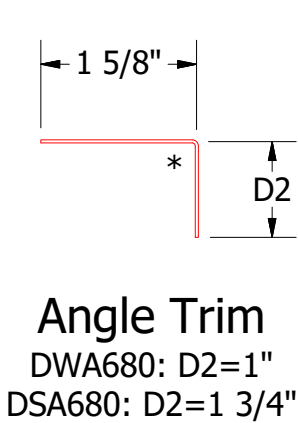
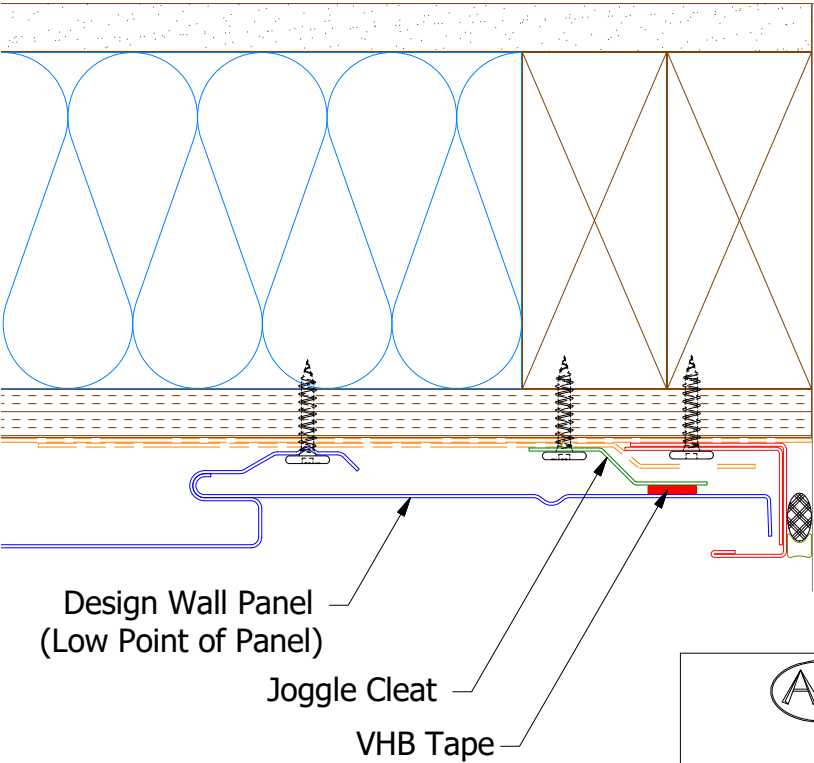
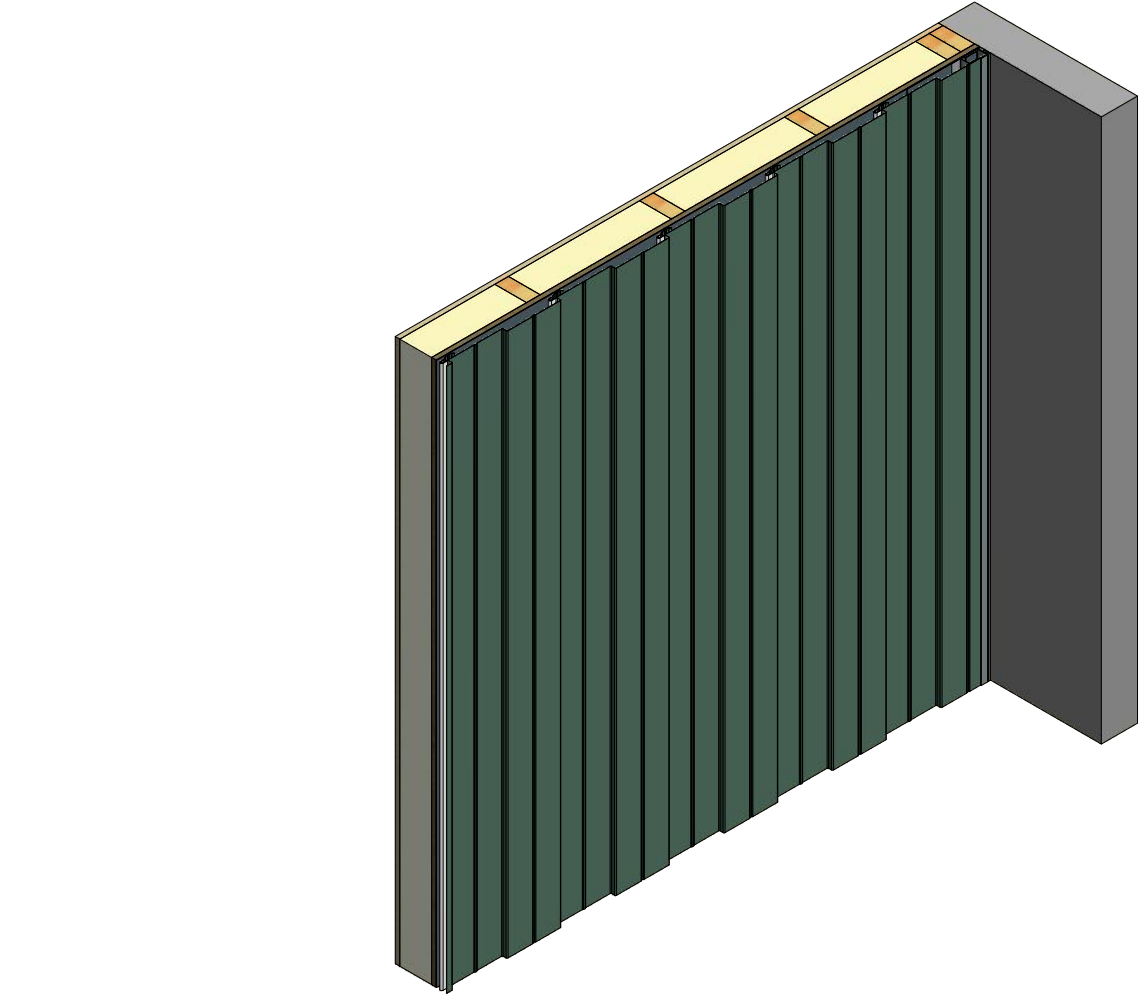
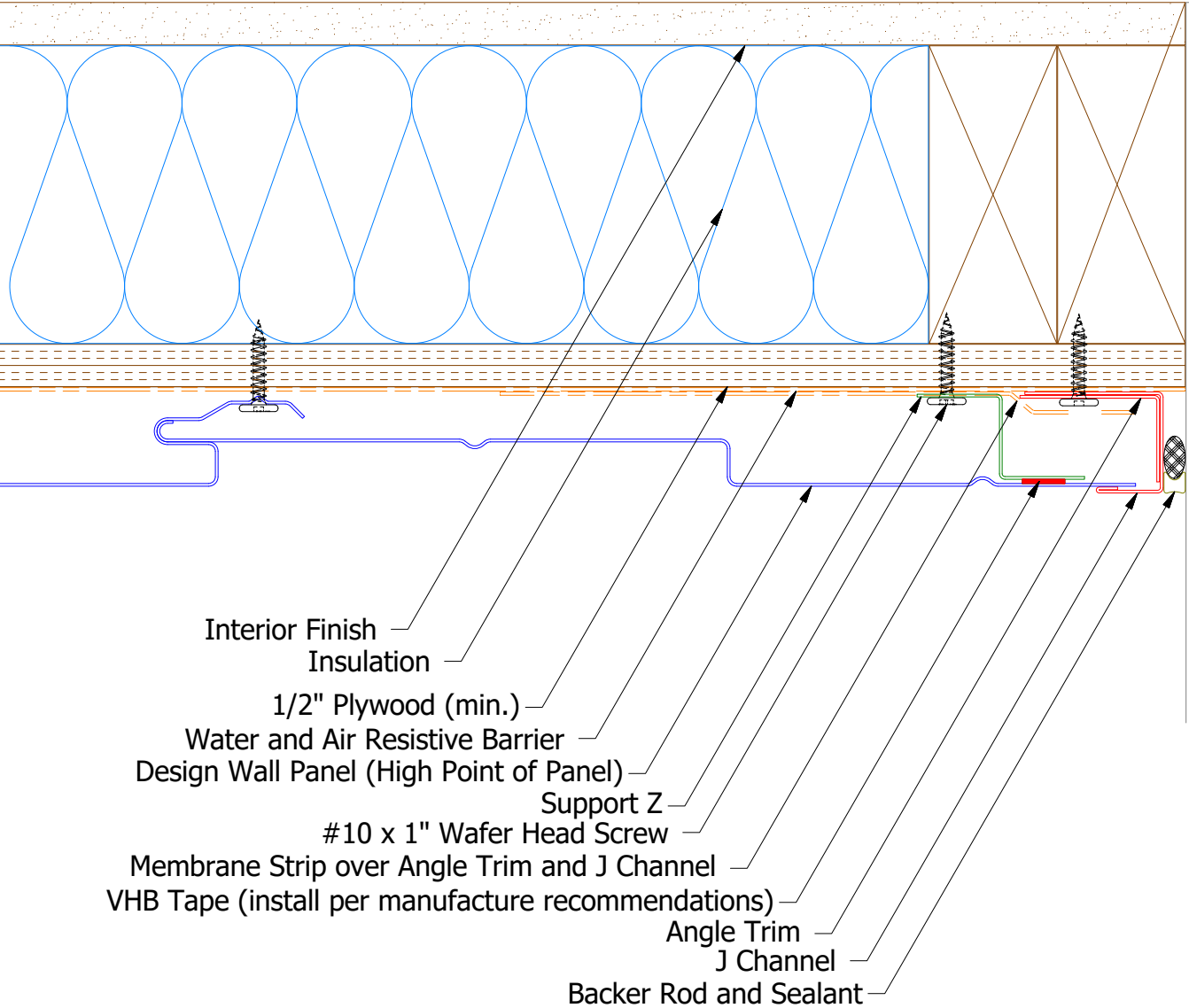
Note: * denotes color side.

						Design Wall Base Detail			
						DWG. NO.		DR	DATE
								DMR	6/23/2016
1	7/13/2021	Changed Pop Rivets to VHB Tape		DMR		MATERIAL		APP	DAS
								DATE	7/25/16
REV. NO.	DATE	DESCRIPTION OF REVISION		BY	APP			SH. SIZE	SCALE
								B	X:X



ATAS INTERNATIONAL, INC
Allentown PA
610-395-8445
Mesa AZ
480-558-7210

Vertical Panel



Note: * denotes color side.
Note: stainless steel pop rivets maybe needed along with VHB tape for longer panels.

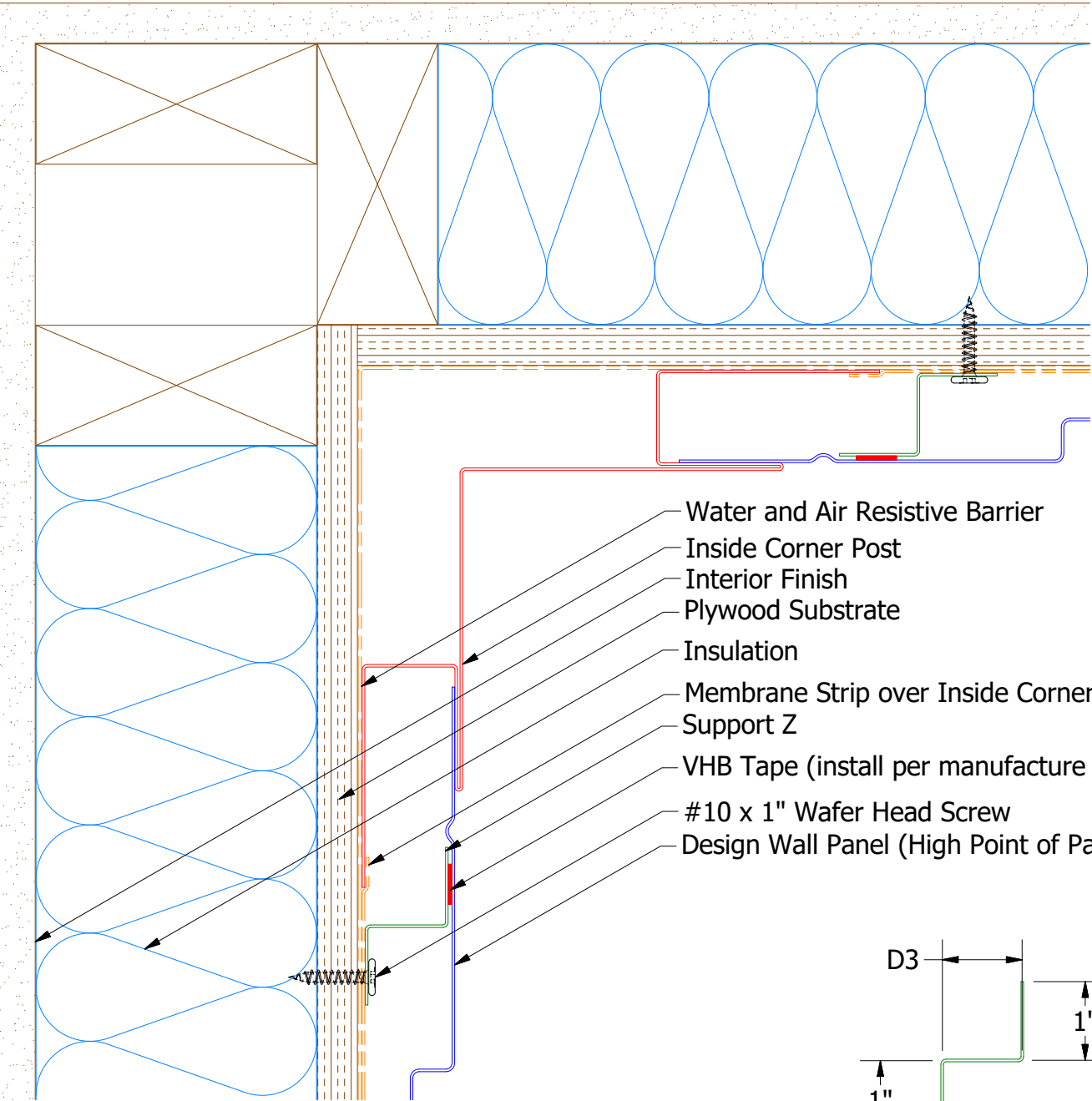
DSA975/DWA975 - Joggle Cleat

TITLE				Design Wall Endwall Detail			
DWG. NO.				DR	DMR	DATE	
1				APP	DAS	DATE	
REV. NO.				DATE	DESCRIPTION OF REVISION	BY	APP
1				7/13/2021	Changed Pop Rivets to VHB Tape	DMR	
SH. SIZE				B	SCALE	X:X	

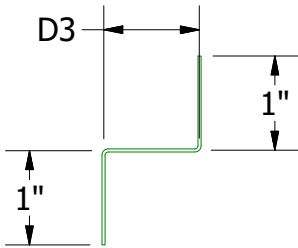


ATAS INTERNATIONAL, INC
Allentown PA
610-395-8445
Mesa AZ
480-558-7210

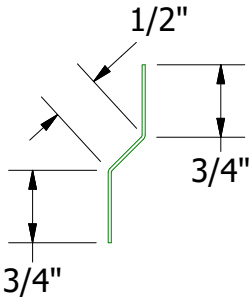
Vertical Panel



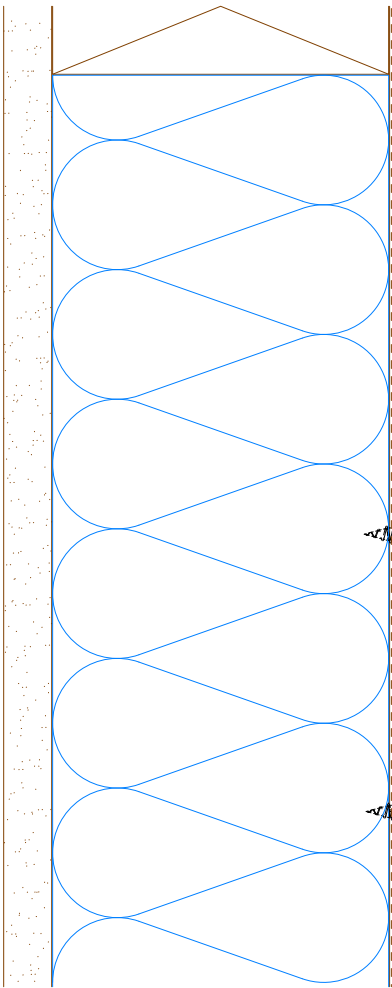
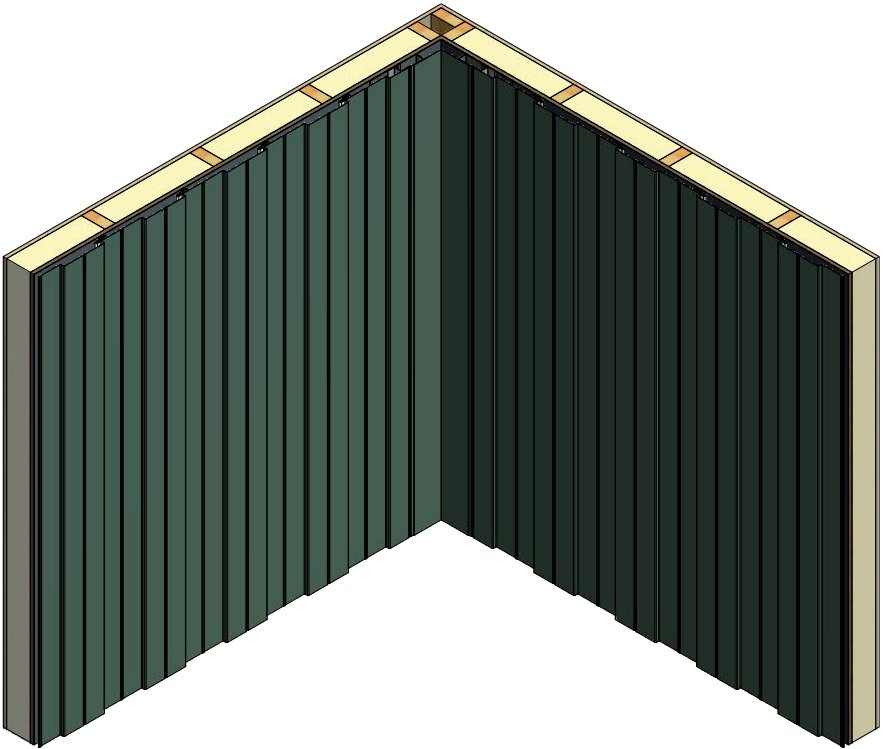
- Water and Air Resistive Barrier
- Inside Corner Post
- Interior Finish
- Plywood Substrate
- Insulation
- Membrane Strip over Inside Corner Post
- Support Z
- VHB Tape (install per manufacture recommendations)
- #10 x 1" Wafer Head Screw
- Design Wall Panel (High Point of Panel)



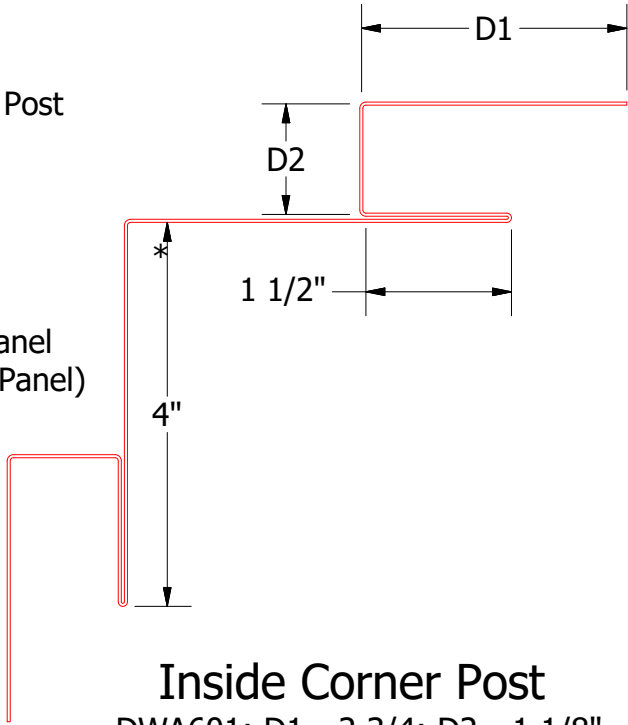
Support Z
DWA681: D3=1"
DSA681:D3=1 5/8"



DWA975/DSA975 - Joggle Cleat



- Inside Corner Post
- VHB Tape
- Joggle Cleat
- Design Wall Panel (Low Point of Panel)

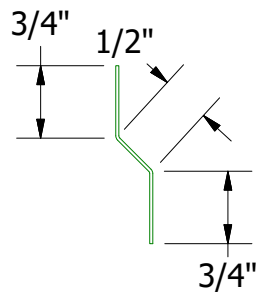


Inside Corner Post
DWA601: D1= 2 3/4; D2= 1 1/8"
DSA601: D1= 3; D2= 1 7/8"

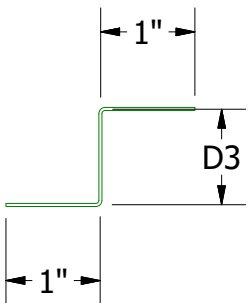
Note: * denotes color side.
Note: stainless steel pop rivets maybe needed along with VHB tape for longer panels.

				TITLE			
				Design Wall Inside Corner Detail			
				DWG. NO.		DR	DATE
						DMR	6/27/2016
1	7/16/2021	Changed Pop Rivets to VHB Tape		DMR	APP		DAS
						DATE	
						7/26/16	
REV. NO.	DATE	DESCRIPTION OF REVISION		BY	APP	SH. SIZE	SCALE
						B	X:X

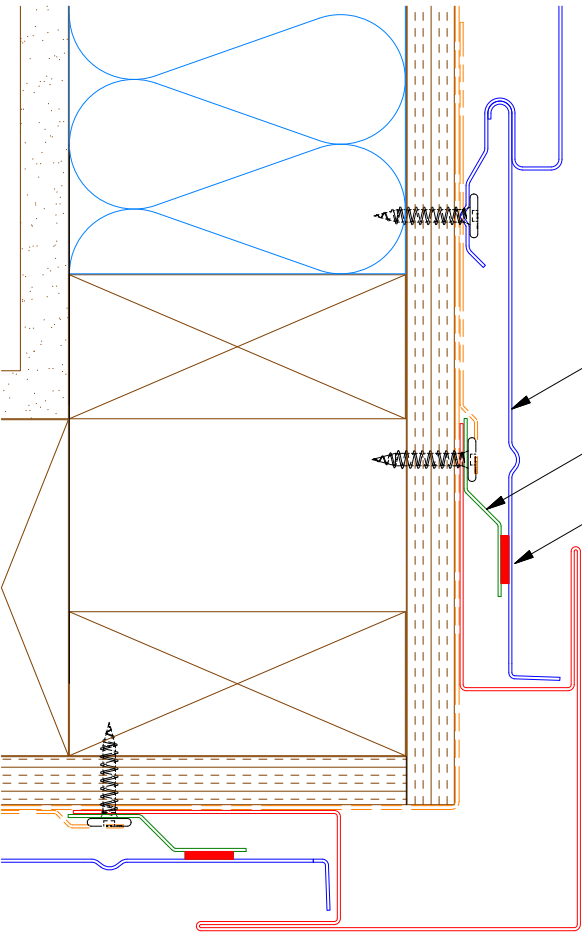
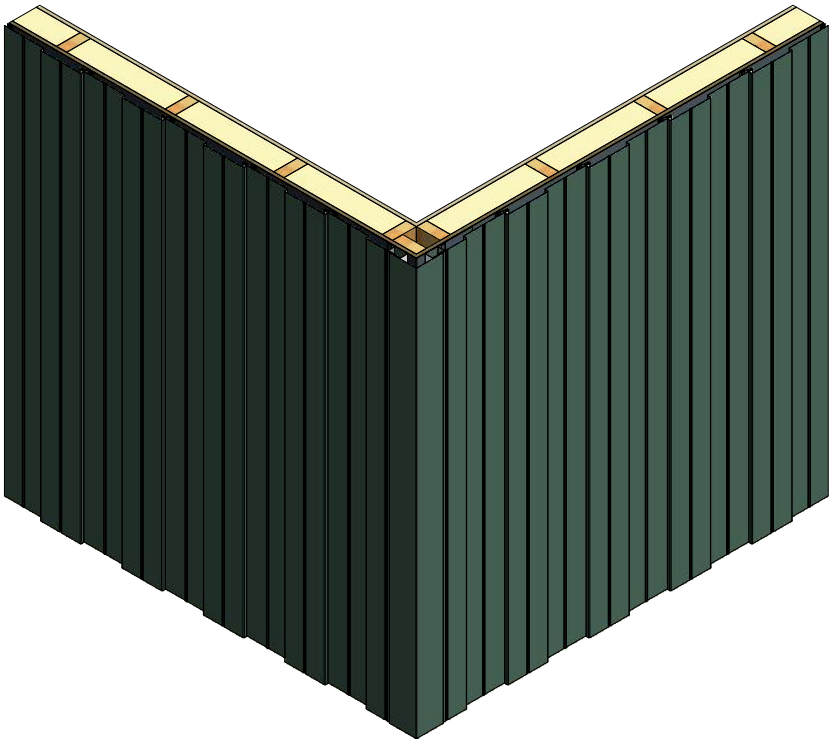
Vertical Panel



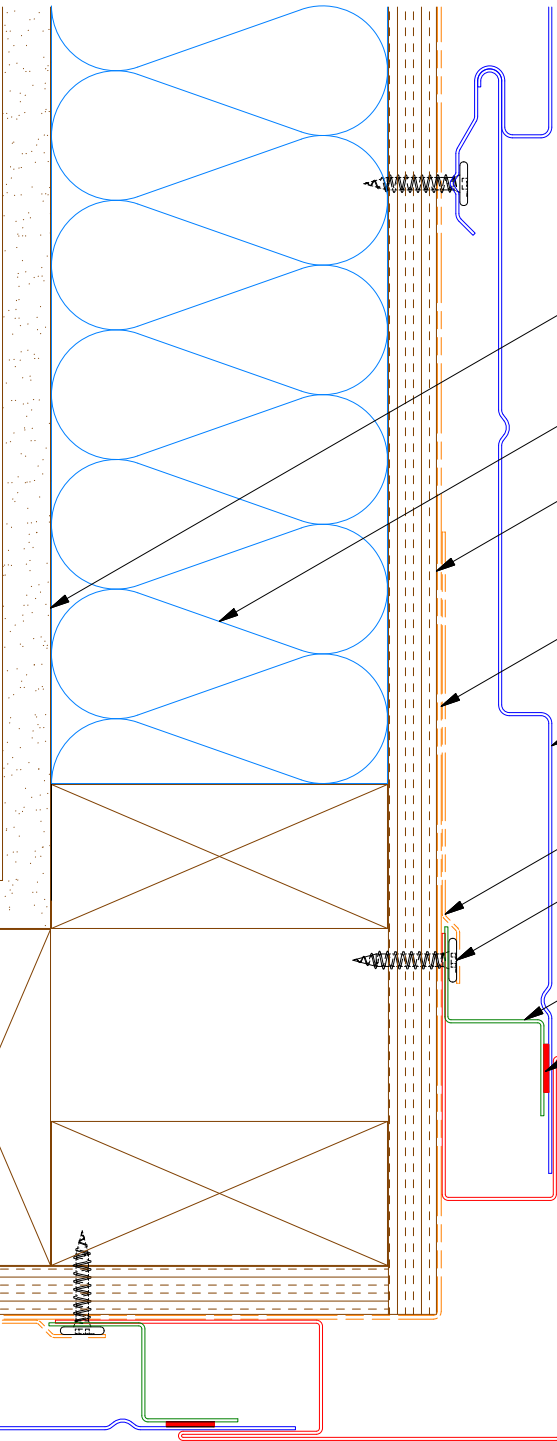
DWA975/DSA975 - Joggle Cleat



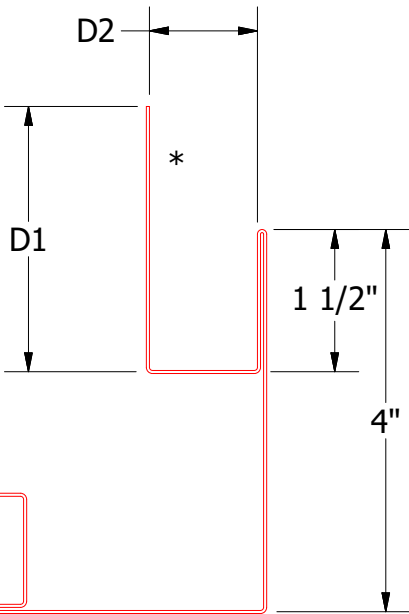
Support Z
DWA681: D3=1"
DSA681:D3=1 5/8"



Design Wall Panel
(Low Point of Panel)
Joggle Cleat
VHB Tape



Interior Finish
Insulation
1/2" Plywood (min.)
Water and Air Resistive Barrier
Design Wall Panel (High Point of Panel)
Membrane Strip over Outside Corner Post
#10 x 1" Wafer Head Screw
Support Z
VHB Tape
(install per manufacture recommendation)
Outside Corner Post

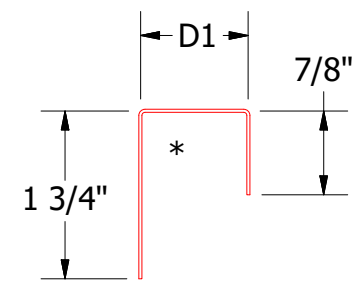
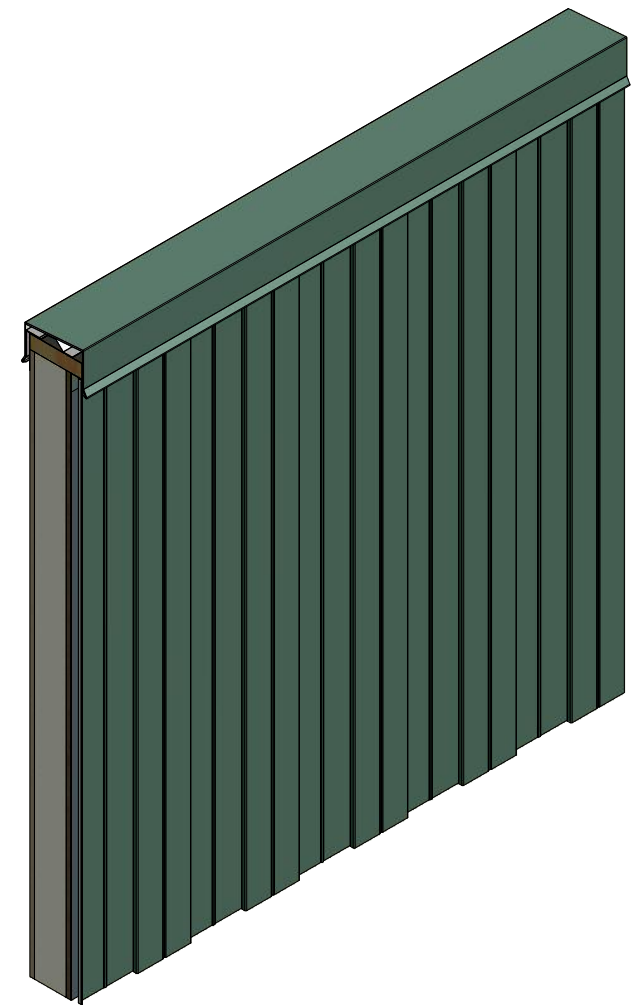
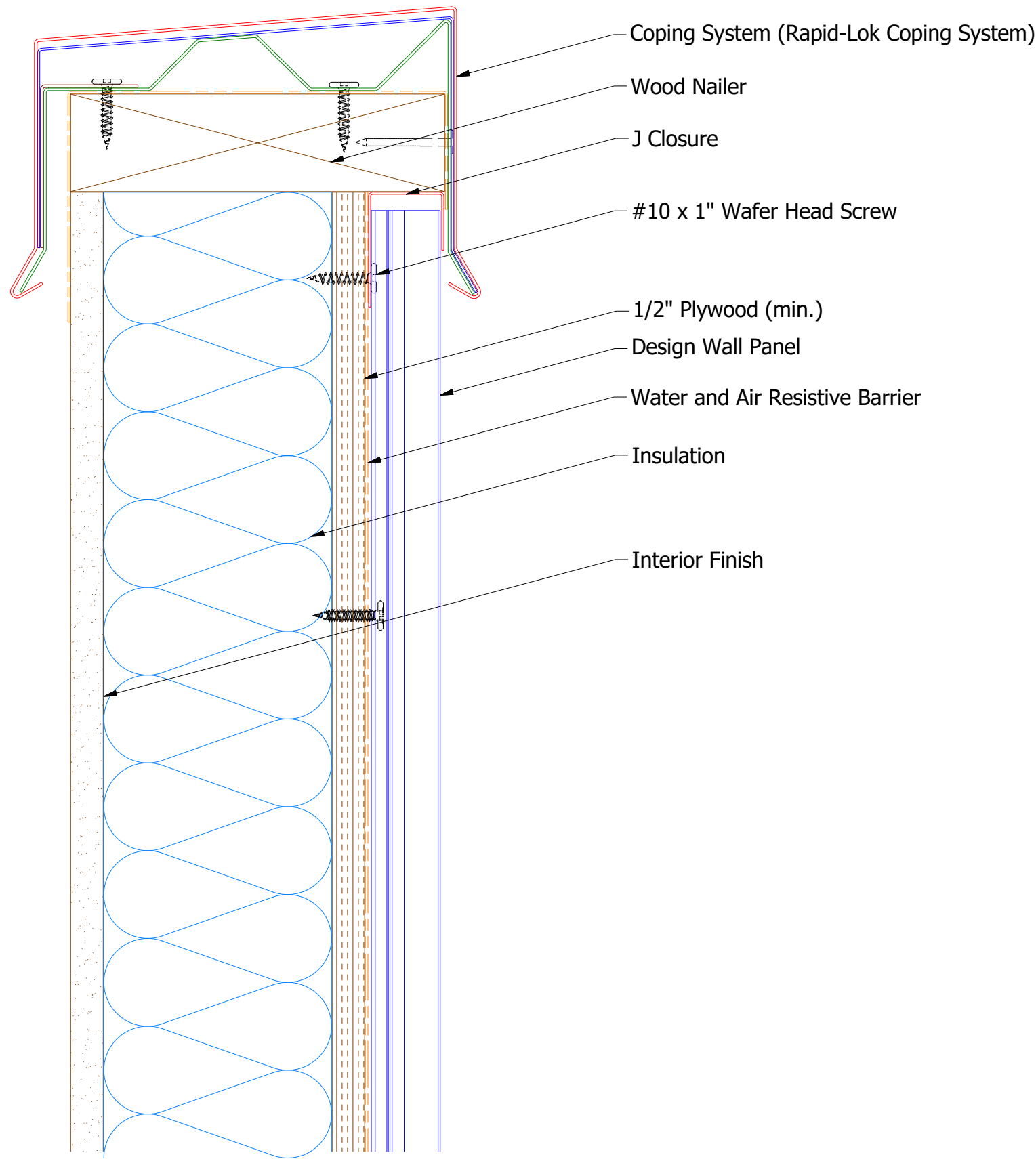


Outside Corner Post
DWA602: D1= 2 3/4; D2= 1 1/8
DSA602: D1= 3; D2= 1 7/8

Note: * denotes color side.
Note: stainless steel pop rivets maybe needed along with VHB tape for longer panels.

				ATAS INTERNATIONAL, INC Allentown PA 610-395-8445 Mesa AZ 480-558-7210			
				TITLE Design Wall Outside Corner Detail			
				DWG. NO.	DR	DATE	6/28/2016
					DMR		
					APP	DAS	DATE 7/26/16
				MATERIAL	SH. SIZE	B	SCALE X:X
01	7/19/2021	Changed Pop Rivets to VHB Tape	DMR				
REV. NO.	DATE	DESCRIPTION OF REVISION	BY	APP			

Vertical Panel

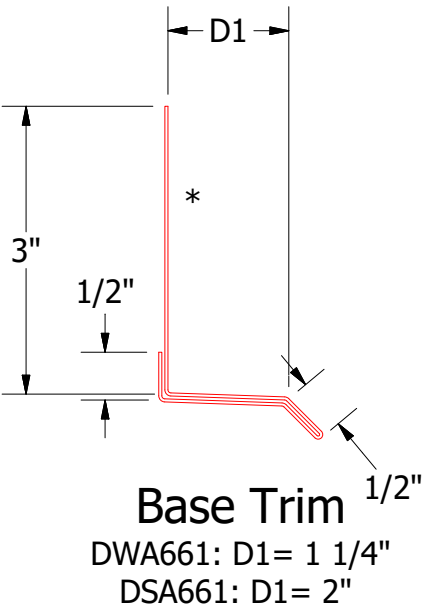
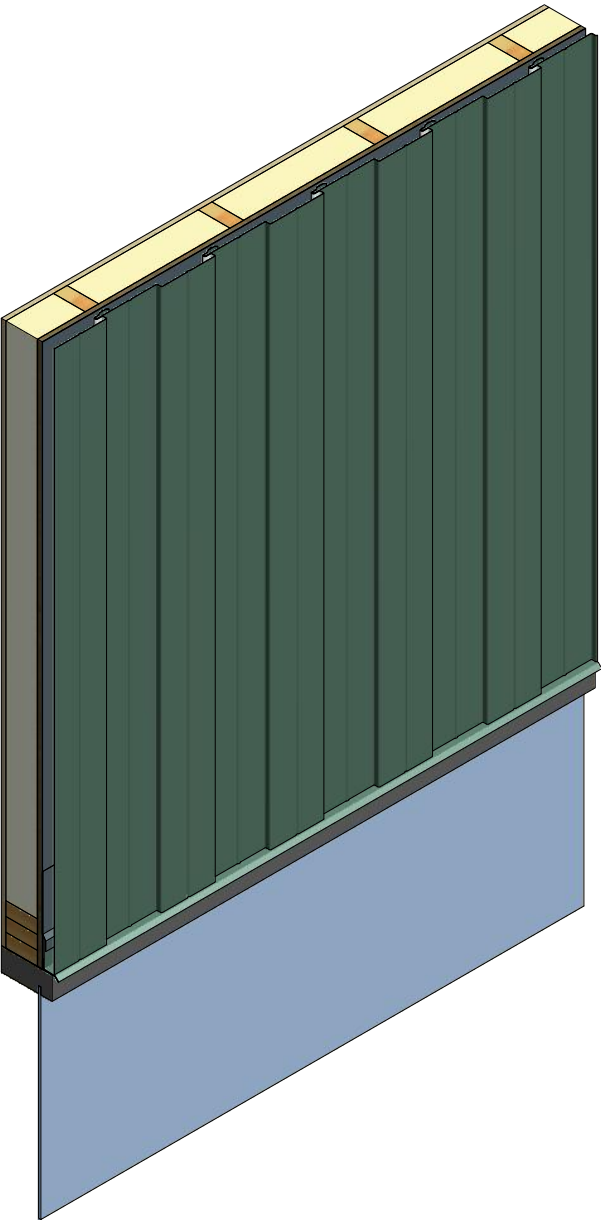
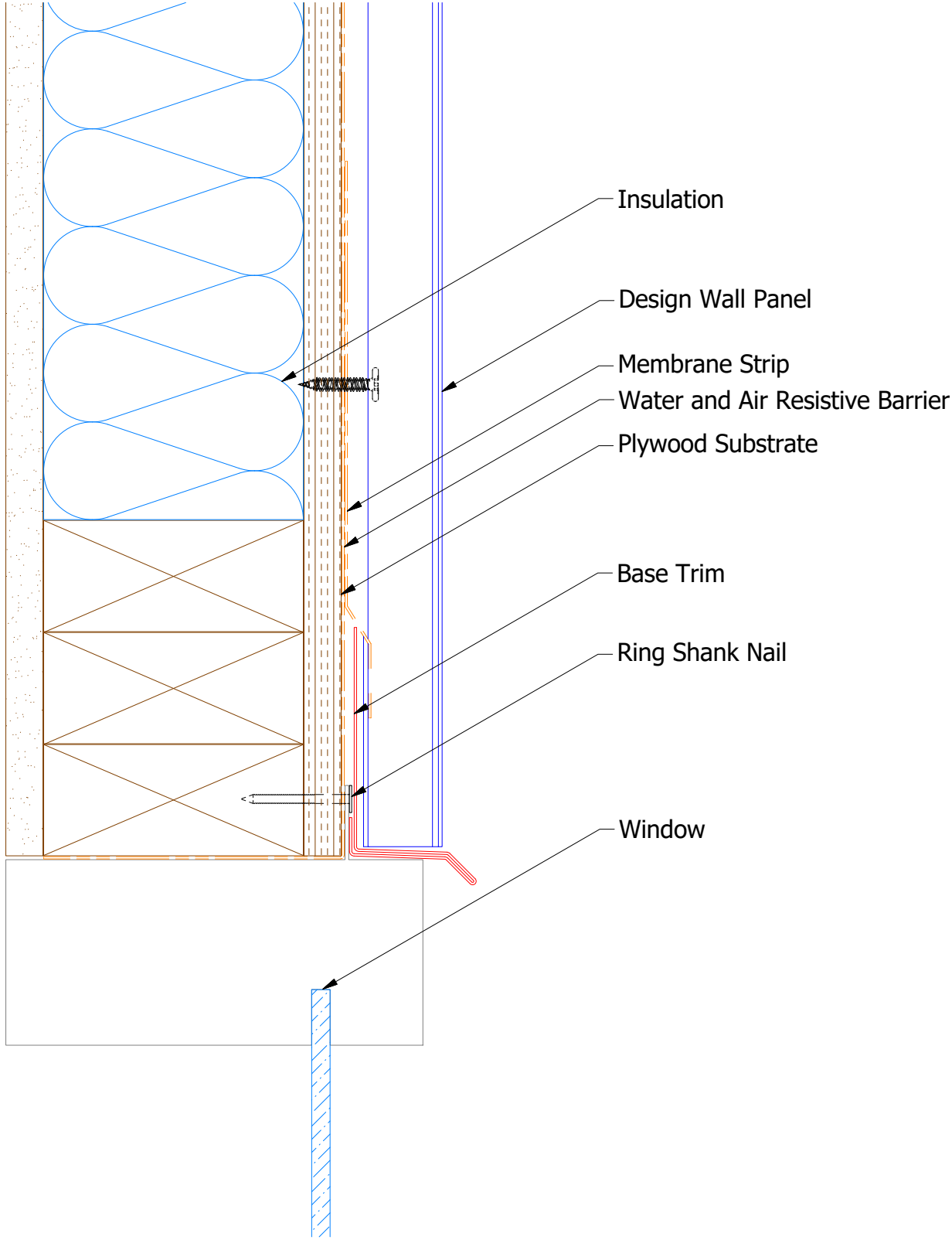


J Closure
DWA270: D1= 1 1/8"
DSA270: D1= 1 7/8"

Note: * denotes color side.

				TITLE		
				Design Wall Top of Wall Detail		
				DWG. NO.	DR	DATE
					DMR	6/30/2016
					APP	DAS
						DATE
						7/26/16
				MATERIAL	SH. SIZE	SCALE
					B	X:X

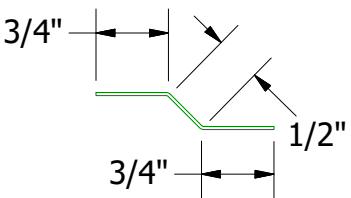
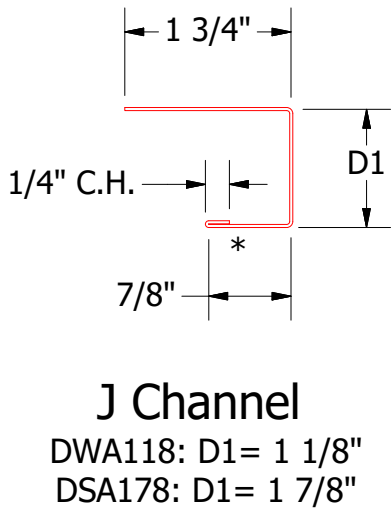
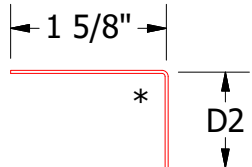
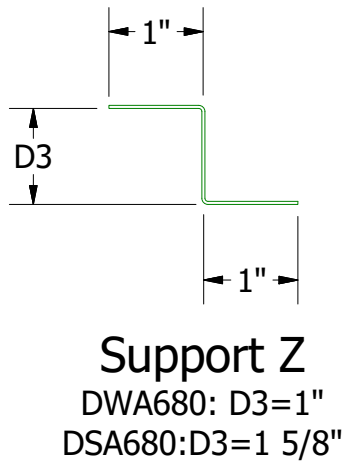
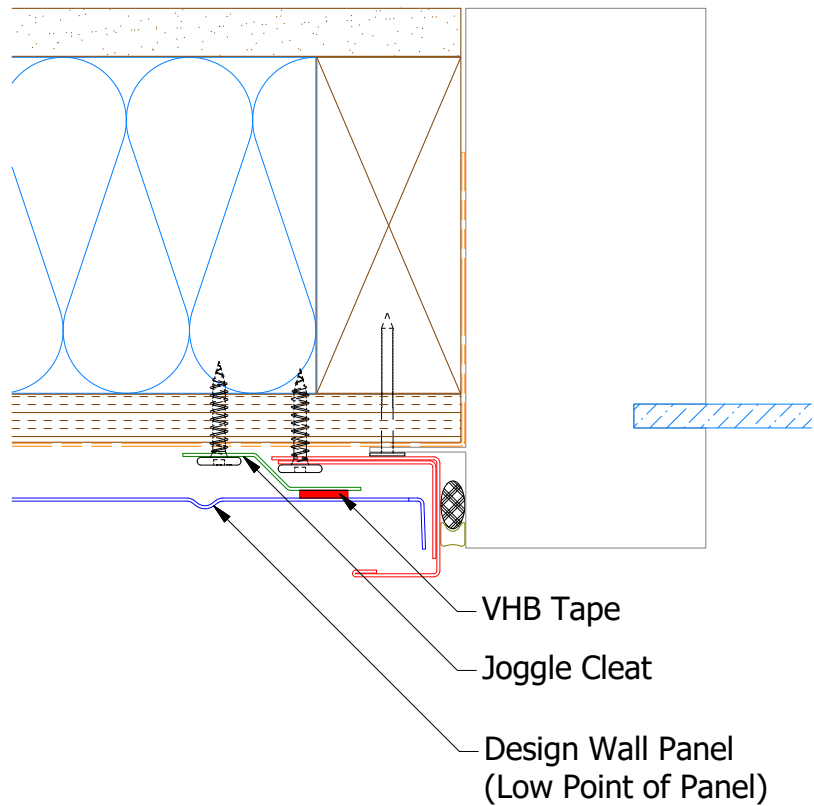
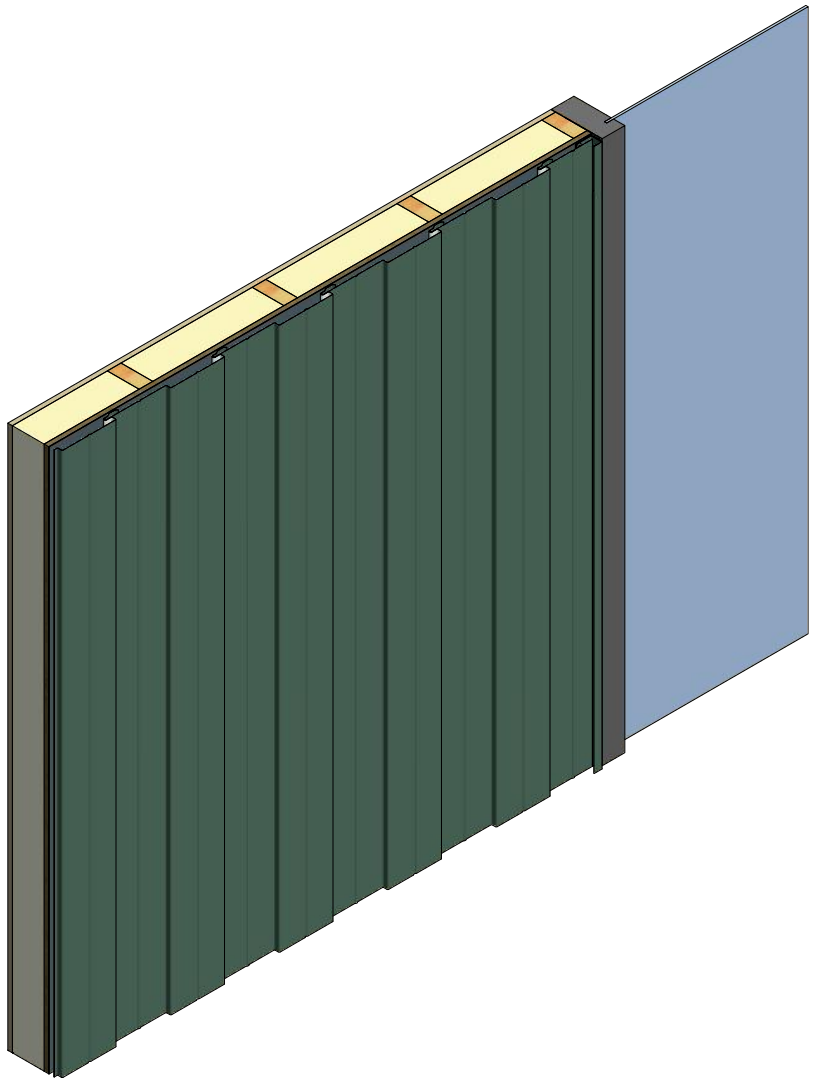
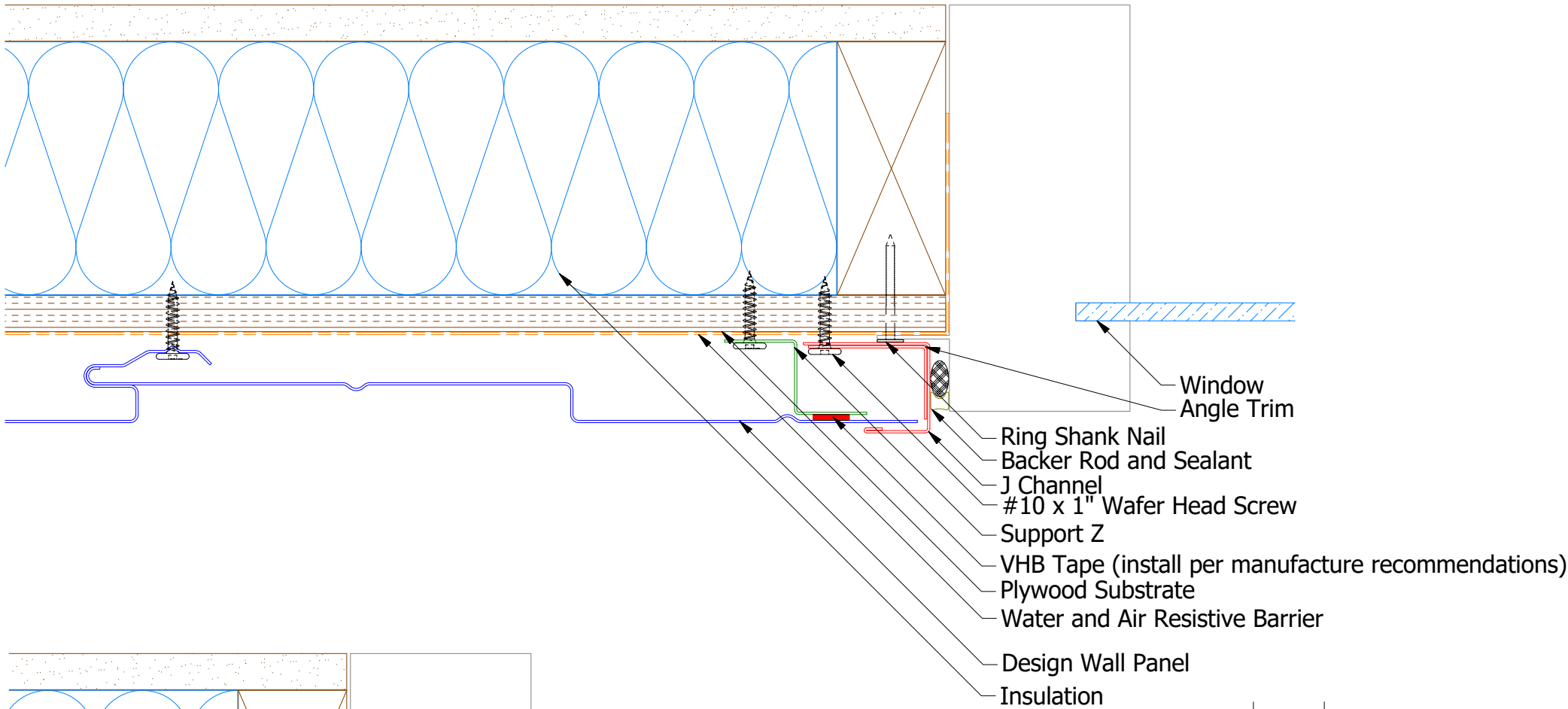
Vertical Panel



Note: * denotes color side.

					TITLE Design Wall Head Window Flange Detail		
					DWG. NO.	DR MBP	DATE 7/27/2018
1	7/16/2021	Changed Pop Rivets to VHB Tape	DMR		APP		DATE
REV. NO.	DATE	DESCRIPTION OF REVISION	BY	APP	MATERIAL	SH. SIZE B	SCALE X:X

Vertical Panel



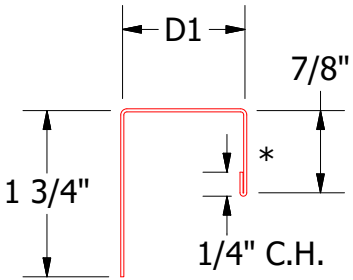
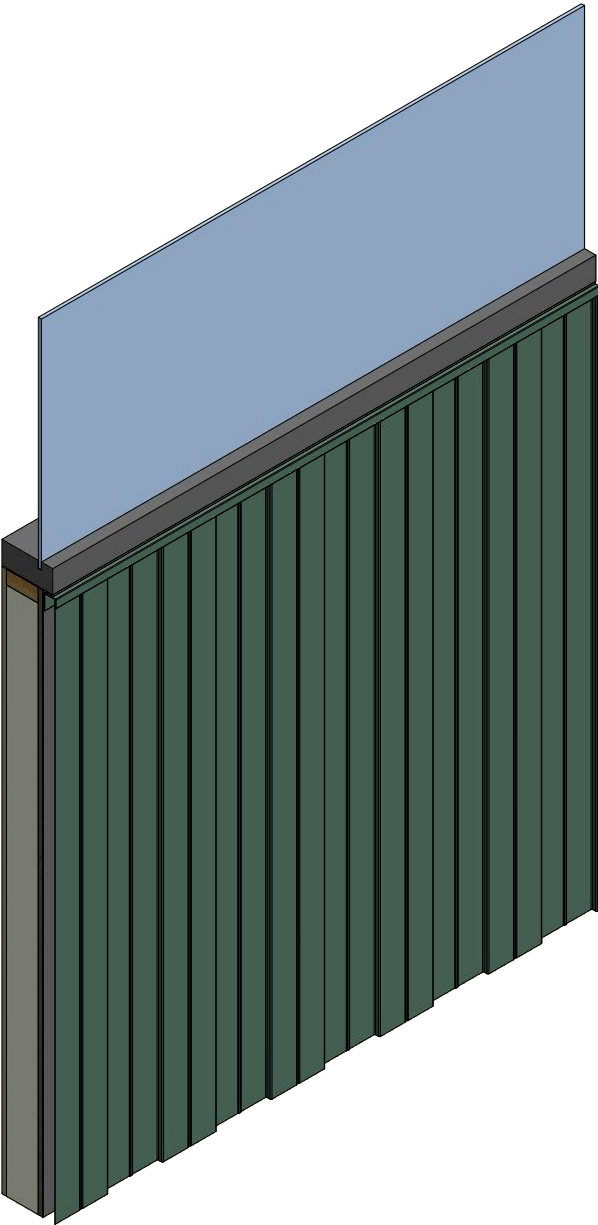
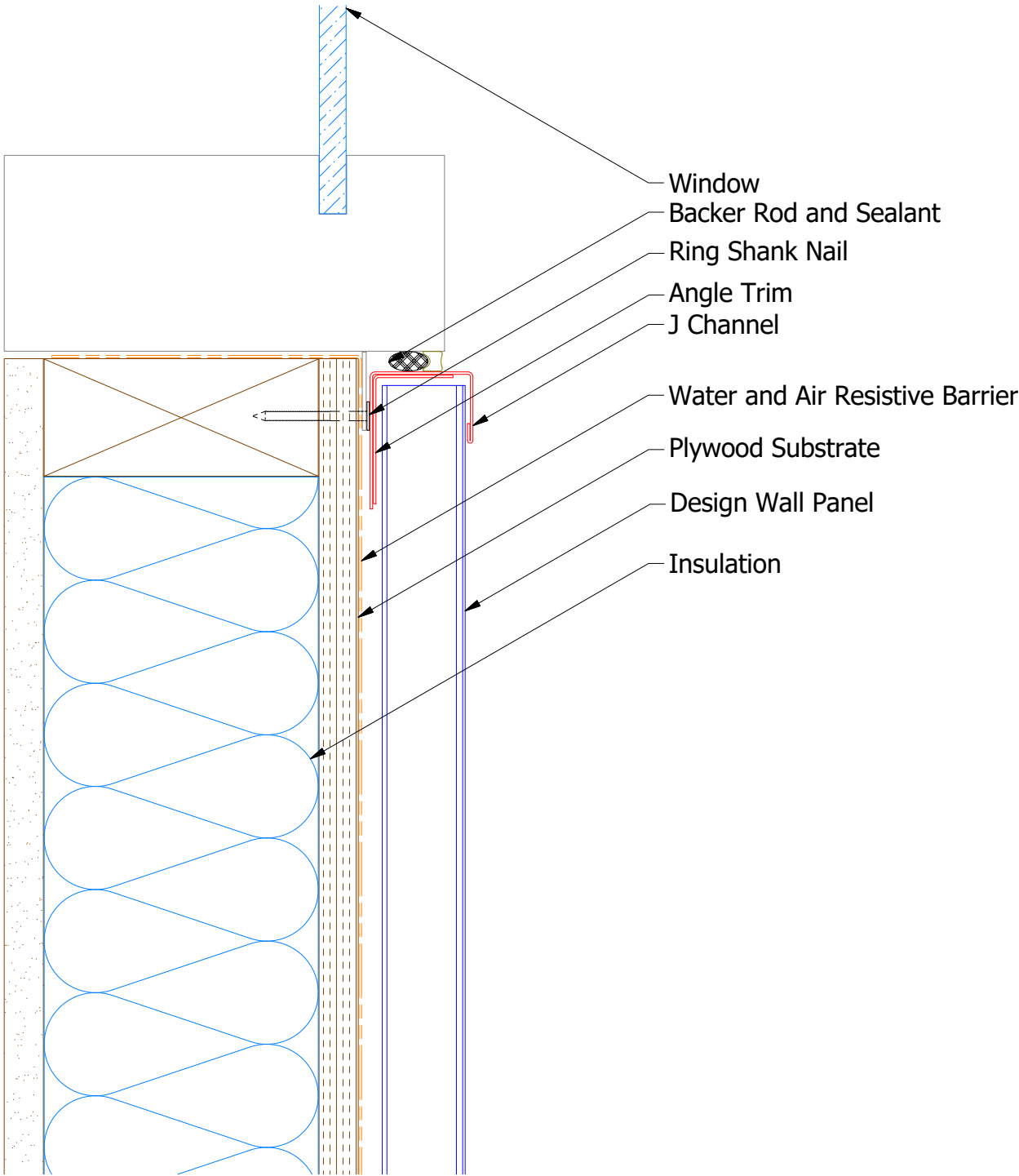
Note: * denotes color side.
Note: stainless steel pop rivets maybe needed along with VHB tape for longer panels.

REVISIONS				TITLE			
REV. NO.	DATE	DESCRIPTION OF REVISION	BY	APP	Design Wall Jamb Window Flange Detail		
02	7/19/2021	Changed Pop Rivets to VHB Tape	DMR		DWG. NO.	DR MBP	DATE 7/27/2018
01	11/6/2019	Updated SKU # for Angle Trim	KRK		MATERIAL	APP	DATE
					SH. SIZE	B	SCALE X:X

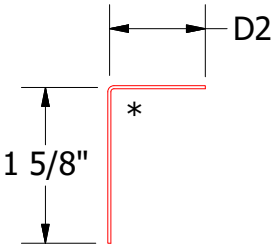


ATAS INTERNATIONAL, INC
Allentown PA
610-395-8445
Mesa AZ
480-558-7210

Vertical Panel



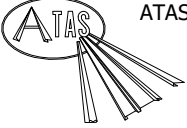
J Channel
DWA118: D1= 1 1/8"
DSA178: D1= 1 7/8"



Angle Trim
DWA680: D2= 1"
DSA680: D2= 1 3/4"

Note: * denotes color side.

REV. NO.		DATE		DESCRIPTION OF REVISION		BY		APP		MATERIAL		SH. SIZE		SCALE	
02	7/22/2021	Changed Pop Rivets to VHB Tape		DMR		DWG. NO.		DR		DATE		MBP		7/27/2018	
01	11/6/2019	Updated SKU # for Angle Trim		KRK		APP		DATE		DATE		DATE		DATE	
REV. NO.		DATE		DESCRIPTION OF REVISION		BY		APP		MATERIAL		SH. SIZE		SCALE	



ATAS INTERNATIONAL, INC
Allentown PA
610-395-8445
Mesa AZ
480-558-7210

TITLE

Design Wall Window Sill Flange Detail

DR

MBP

DATE

7/27/2018

APP

DATE

DATE

DATE

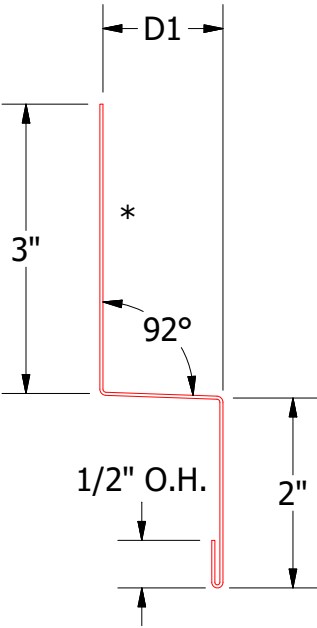
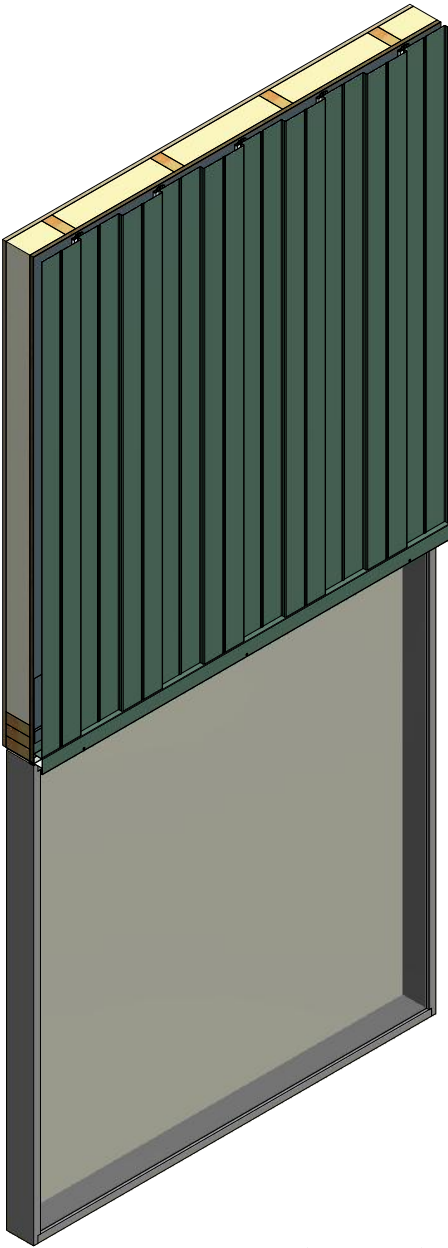
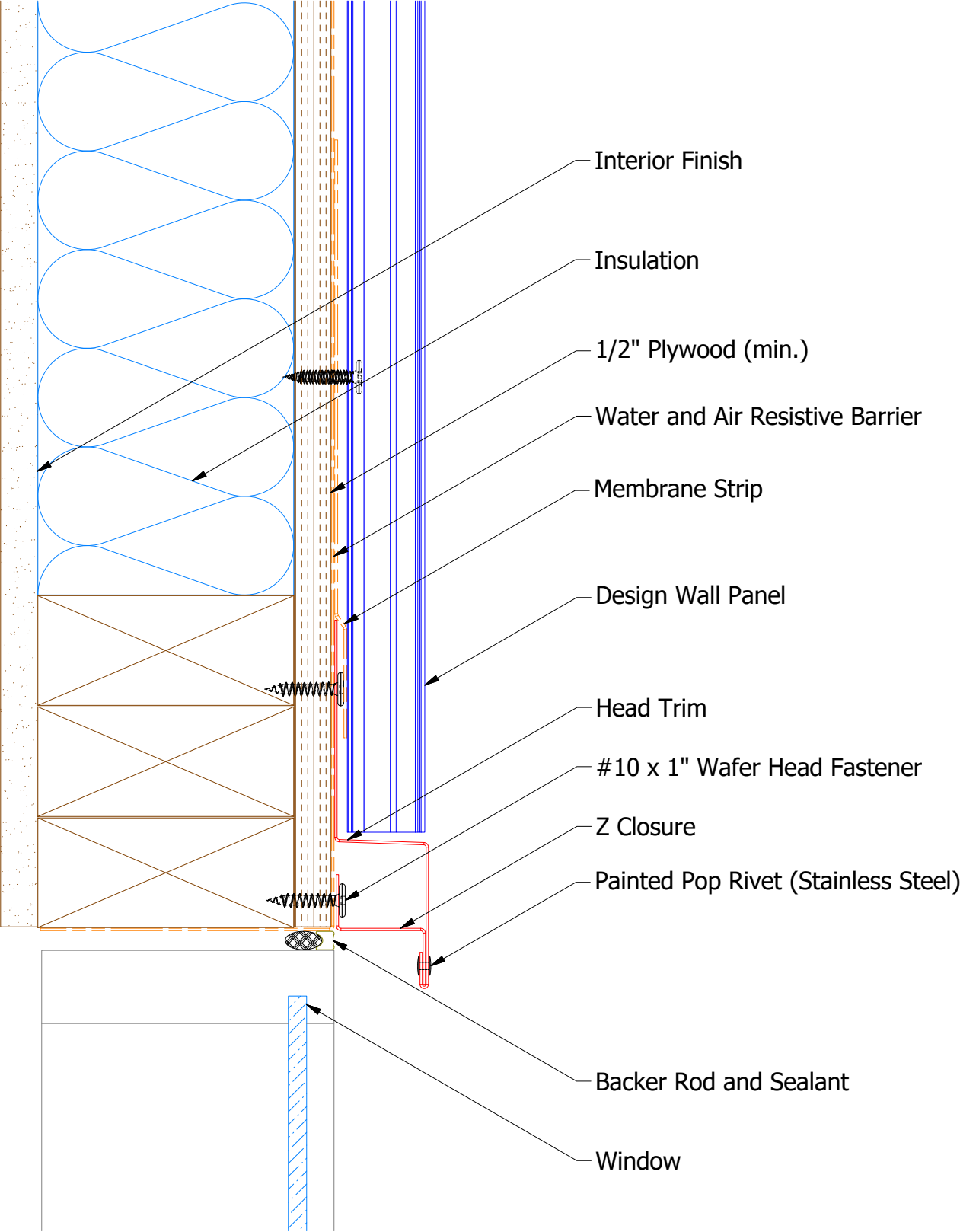
SH. SIZE

B

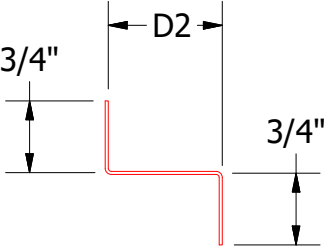
SCALE

X:X

Vertical Panel



Head Trim
DWA550: D1=1 1/4"
DSA550: D1=2"

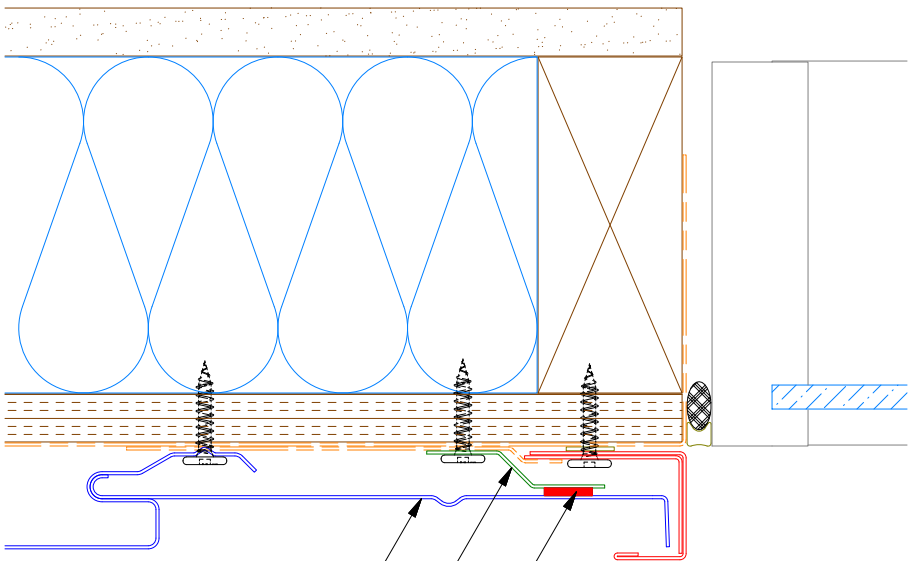
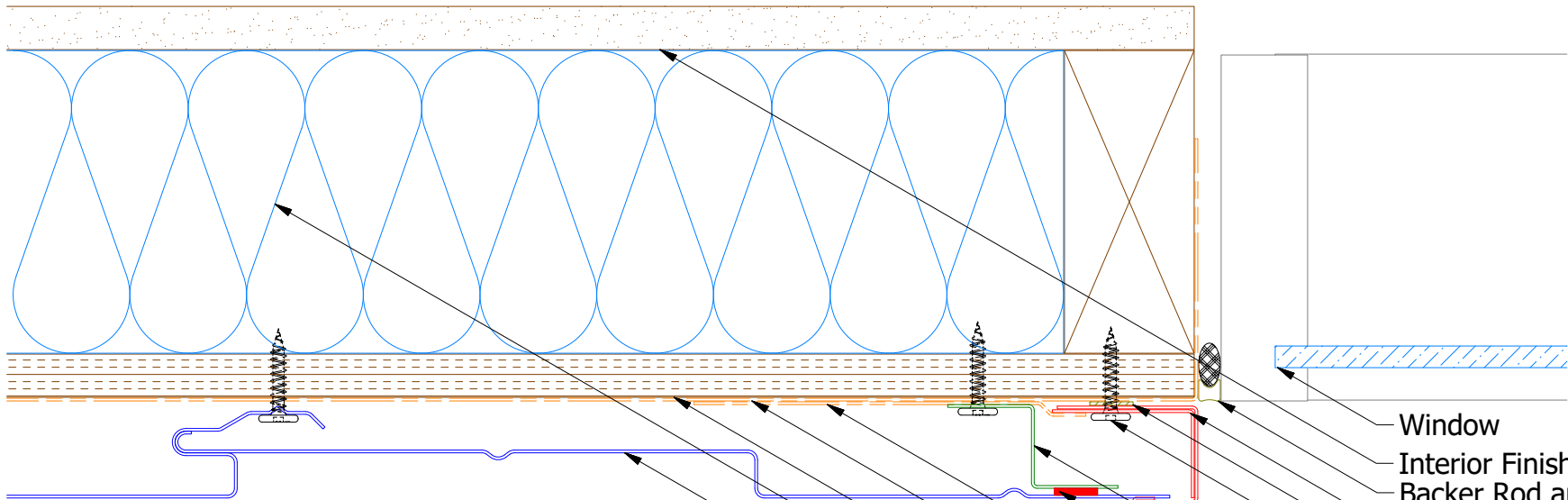


Z Closure
D2=1 3/16"
D2=1 15/16"

Note: * denotes color side.

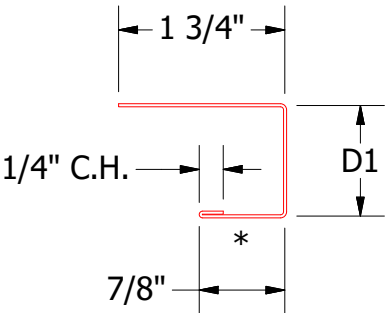
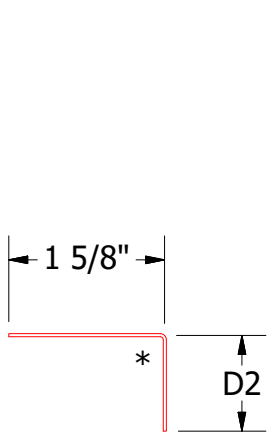
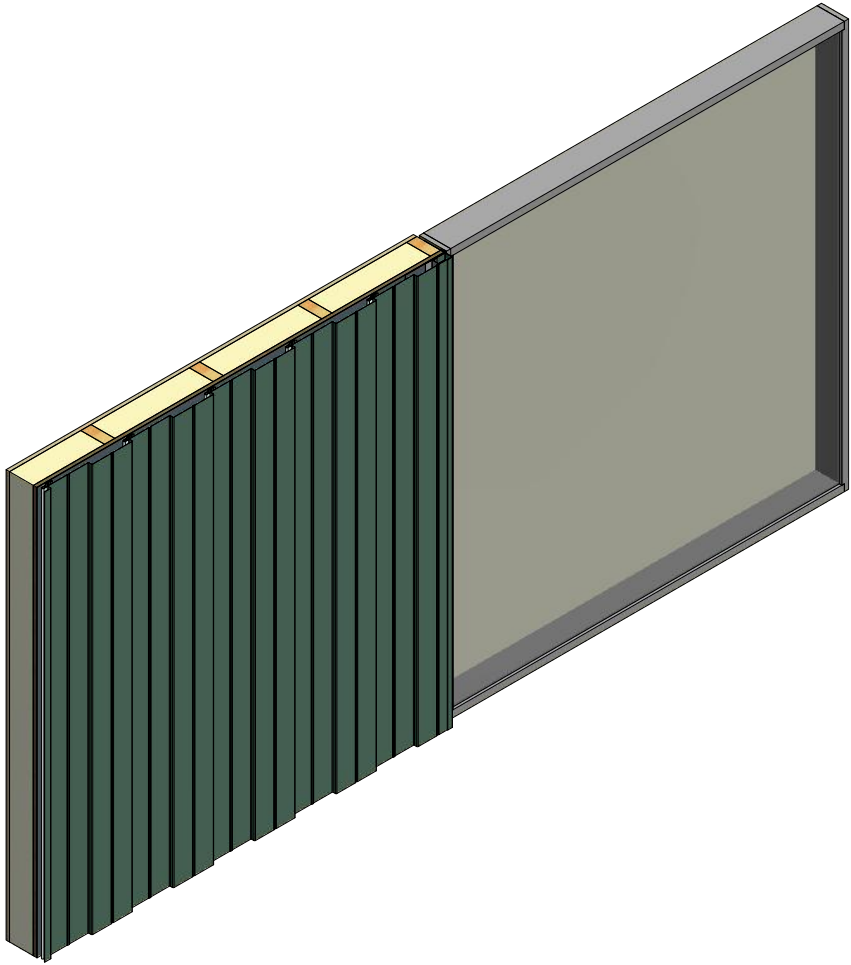
				TITLE	
				Design Wall Existing Head Detail	
				DWG. NO.	DR
					DMR
					DATE
					7/16/2018
				MATERIAL	APP
					DATE
				SH. SIZE	B
				SCALE	X:X

Vertical Panel



- Window
- Interior Finish
- Backer Rod and Sealant
- Angle Trim
- Butyl Tape
- #10 x 1" Wafer Head Fastener
- J Channel
- Support Z
- VHB Tape (install per manufacture recommendations)
- Membrane Strip
- Water and Air Resistive Barrier
- 1/2" Plywood (min.)
- Insulation
- Design Wall Panel (High Point)

- Design Wall Panel (Low Point)
- Joggle Cleat
- VHB Tape



J Channel
DWA118: D1=1 1/8"
DSA178: D1=1 7/8"

Angle Trim
DWA680: D2=1"
DSA680: D2=1 1/2"

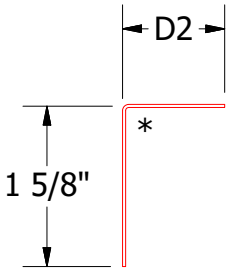
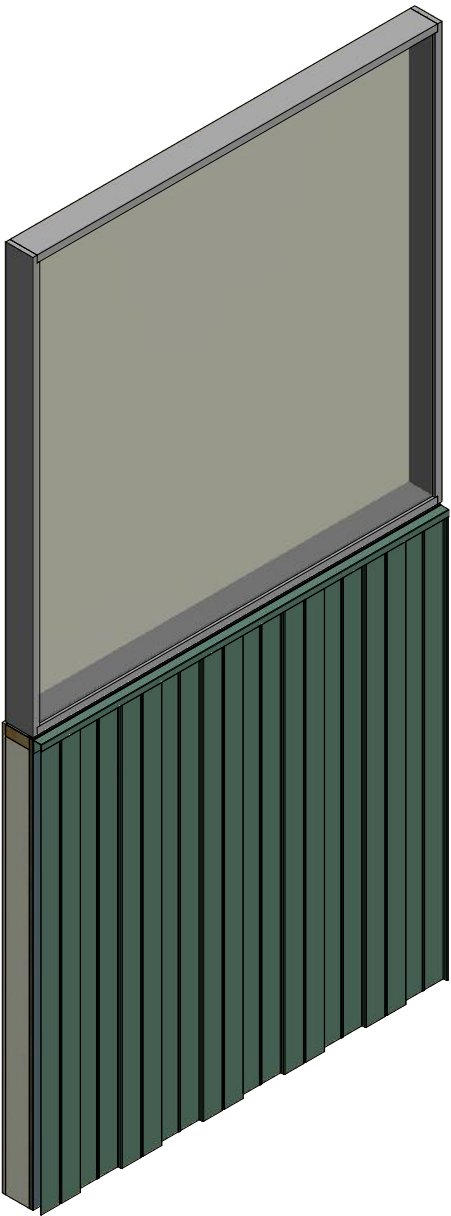
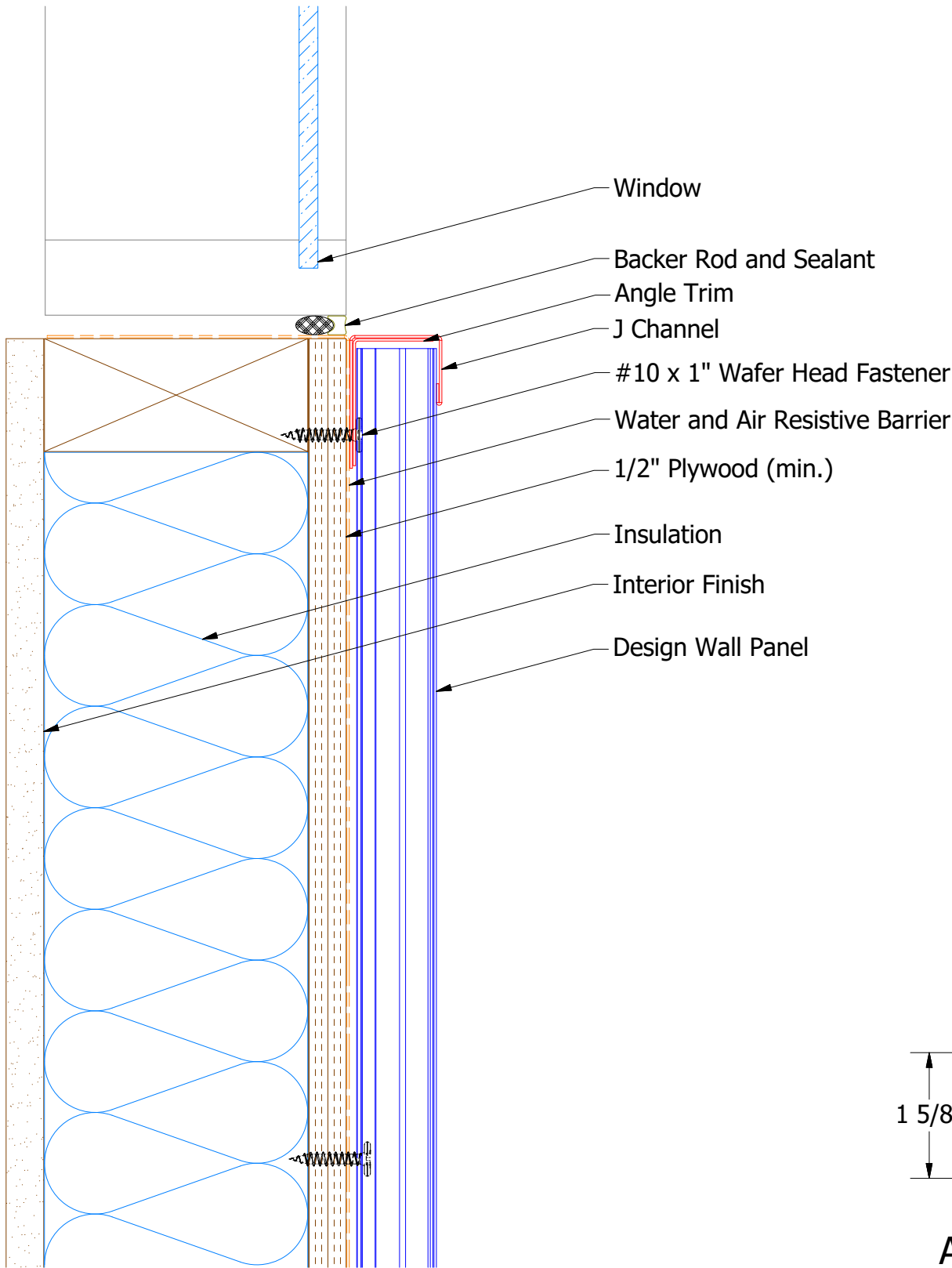
Note: * denotes color side.
Note: stainless steel pop rivets maybe needed along with VHB tape for longer panels.

TITLE				Design Wall Existing Jamb Detail			
REV. NO.	DATE	DESCRIPTION OF REVISION	BY	APP	DWG. NO.		DR
							DMR
01	7/19/2021	Changed Pop Rivets to VHB Tape	DMR		MATERIAL		DATE
					SH. SIZE		B
					SCALE		X:X

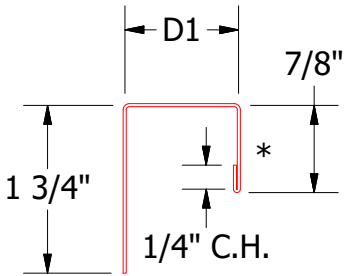


ATAS INTERNATIONAL, INC
Allentown PA
610-395-8445
Mesa AZ
480-558-7210

Vertical Panel



Angle Trim
DWA680: D2=1"
DSA680: D2=1 3/4"



J Channel
DWA118: D1=1 1/8"
DSA178: D1=1 7/8"

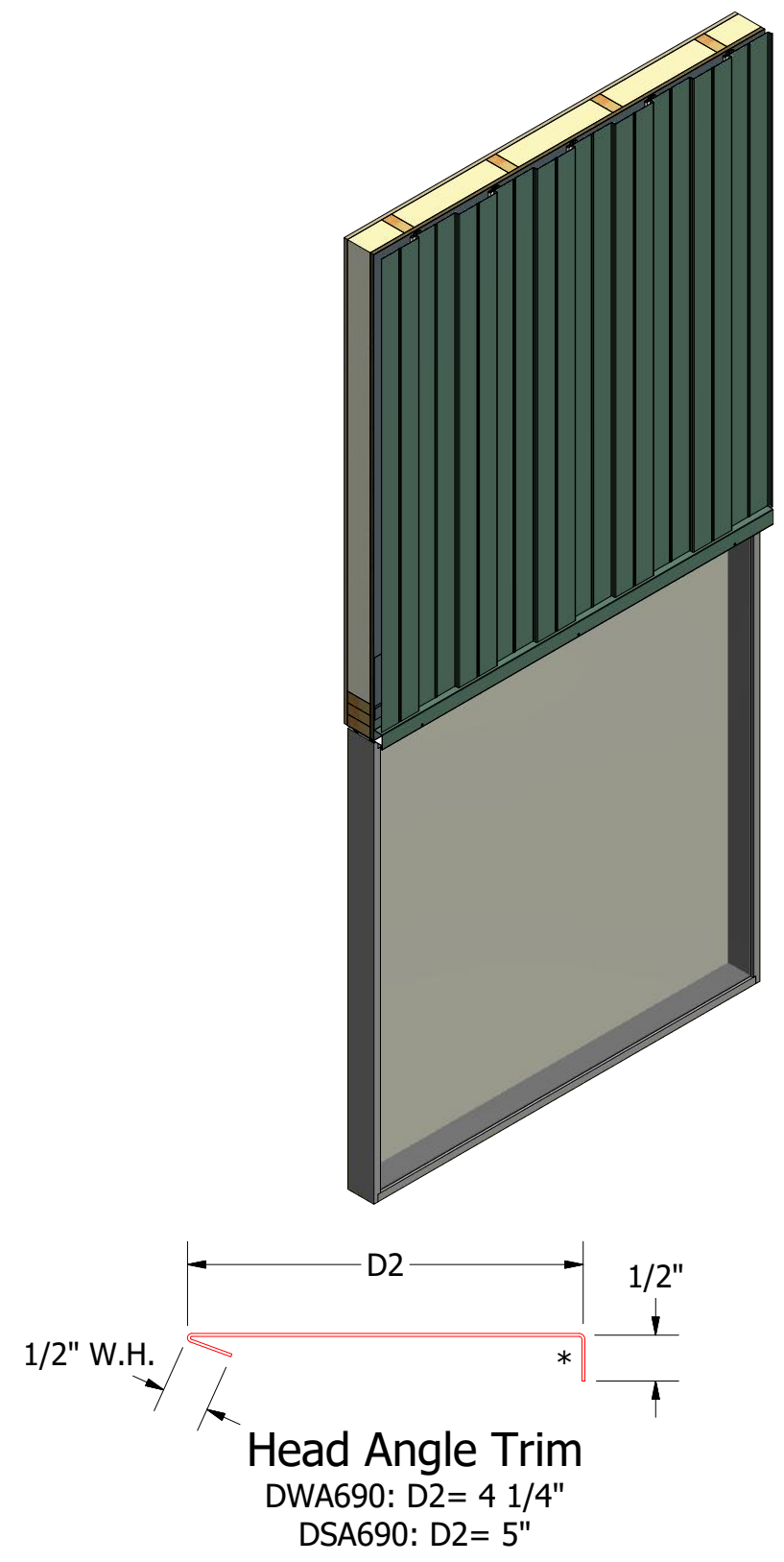
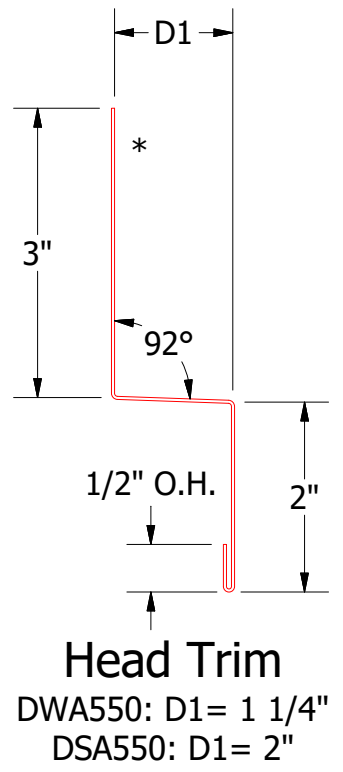
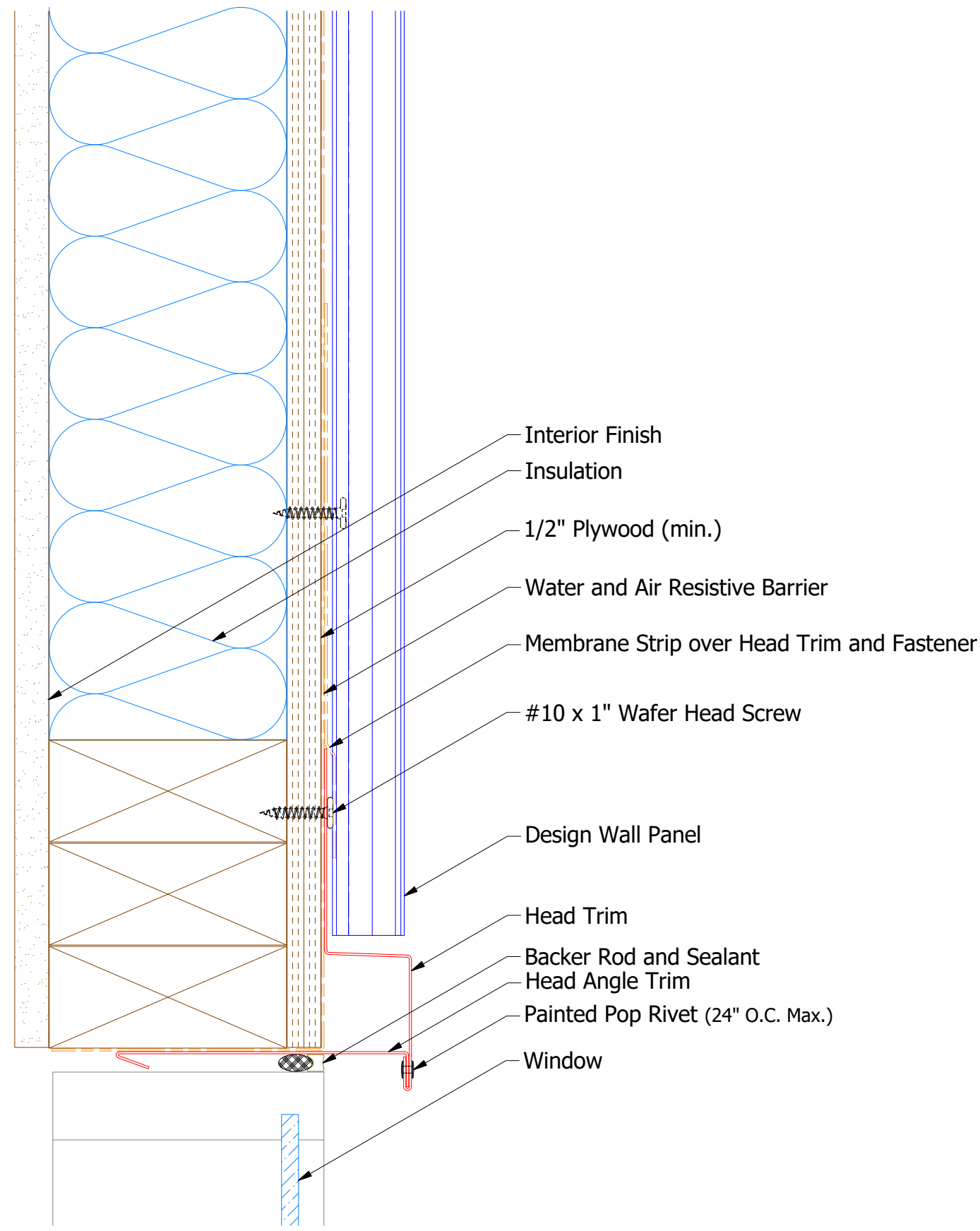
Note: * denotes color side.

						TITLE	
						Design Wall Existing Window Sill Detail	
						DWG. NO.	
						DR	
						DMR	
						DATE 7/20/2018	
01	7/19/2021	Changed Pop Rivets to VHB Tape		DMR		APP	
						MATERIAL	
						SH. SIZE	
						B	
						SCALE	
						X:X	



ATAS INTERNATIONAL, INC
Allentown PA
610-395-8445
Mesa AZ
480-558-7210

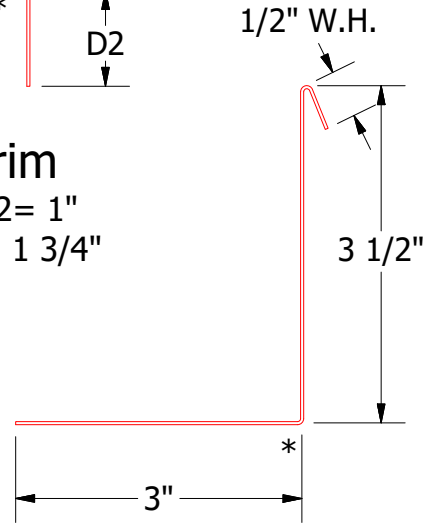
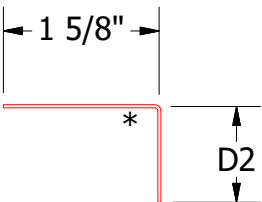
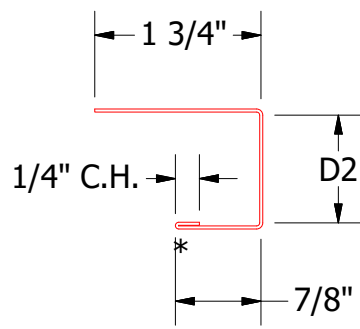
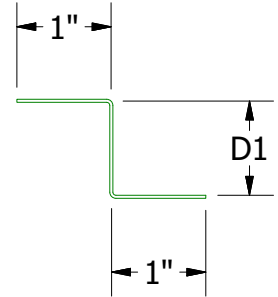
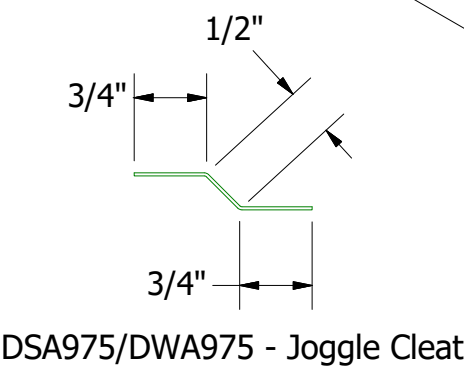
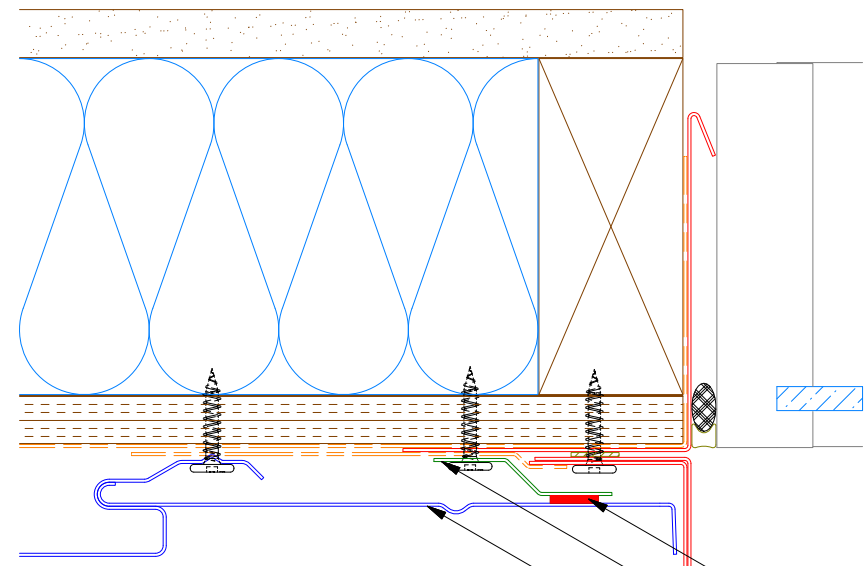
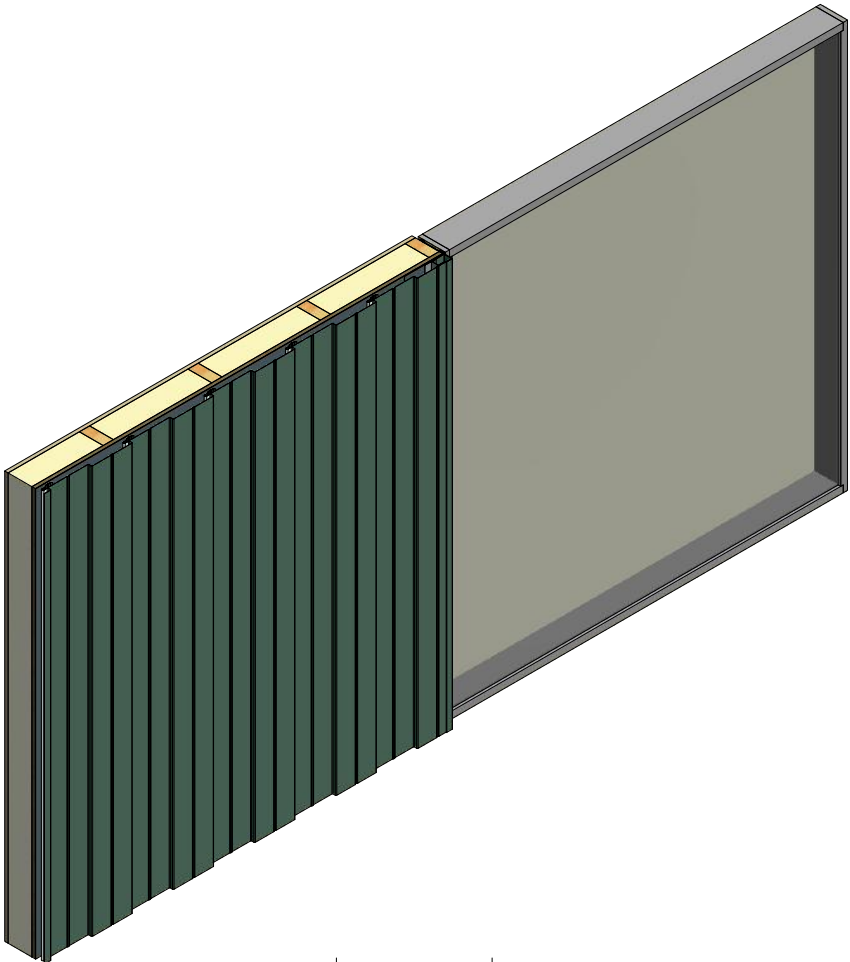
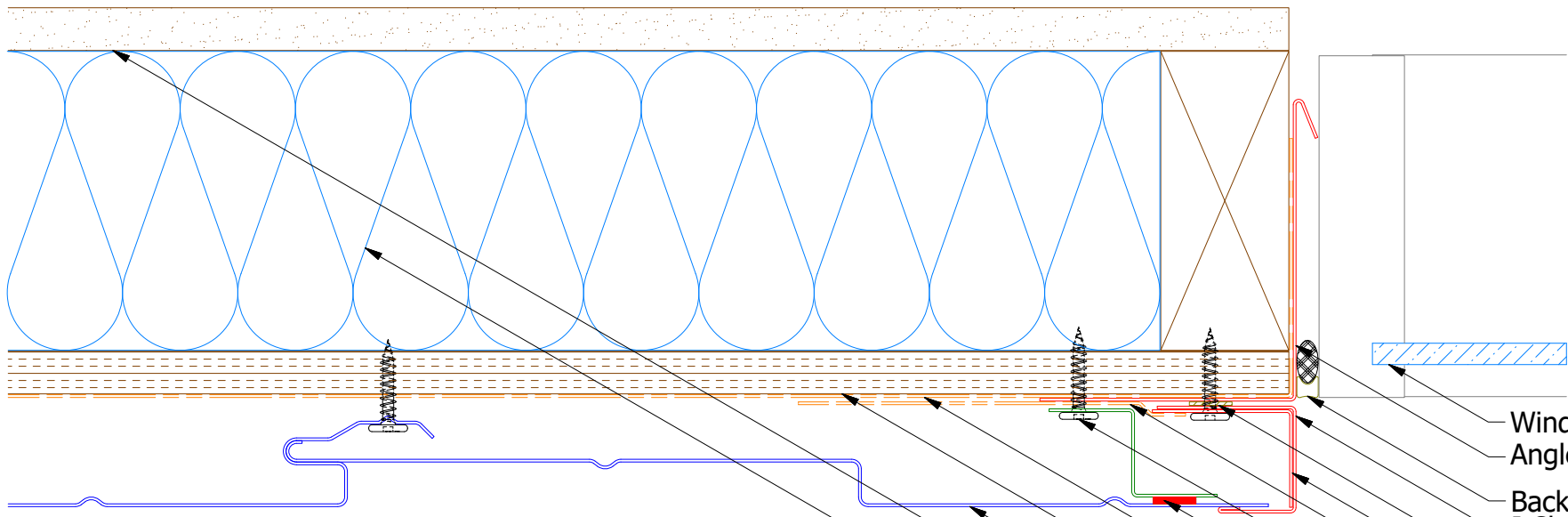
Vertical Panel



Note: * denotes color side.

						TITLE		Design Wall Head Detail	
REV. NO.	DATE	DESCRIPTION OF REVISION	BY	APP	DWG. NO.		DR	DMR	DATE
							APP	DAS	DATE
					MATERIAL		SH. SIZE	B	SCALE
1	7/14/2021	Changed Pop Rivets to VHB Tape	DMR						6/24/2016
									7/26/16
									X:X

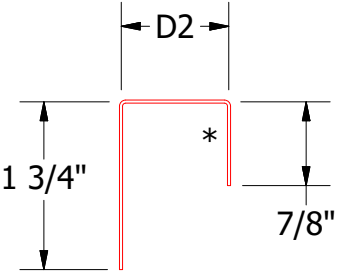
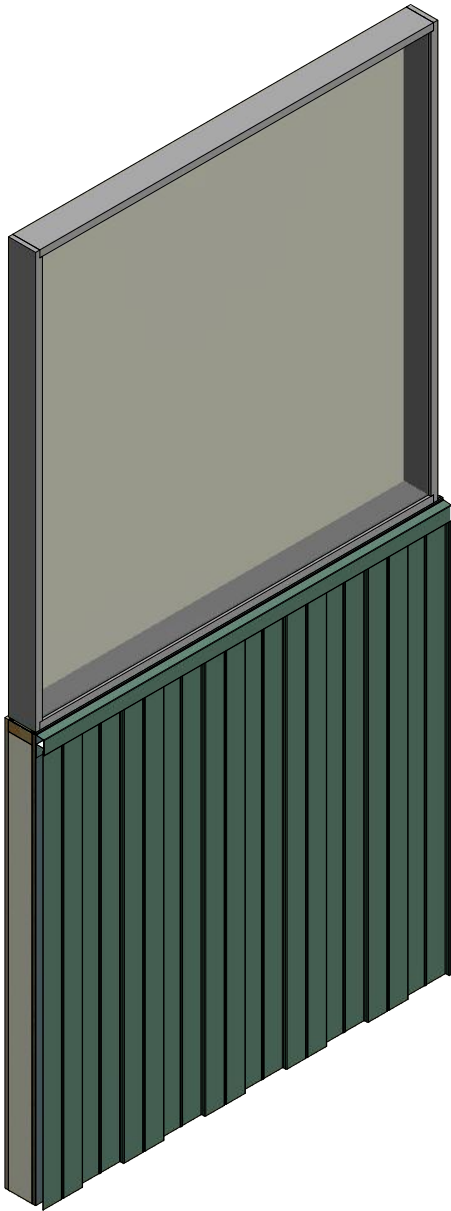
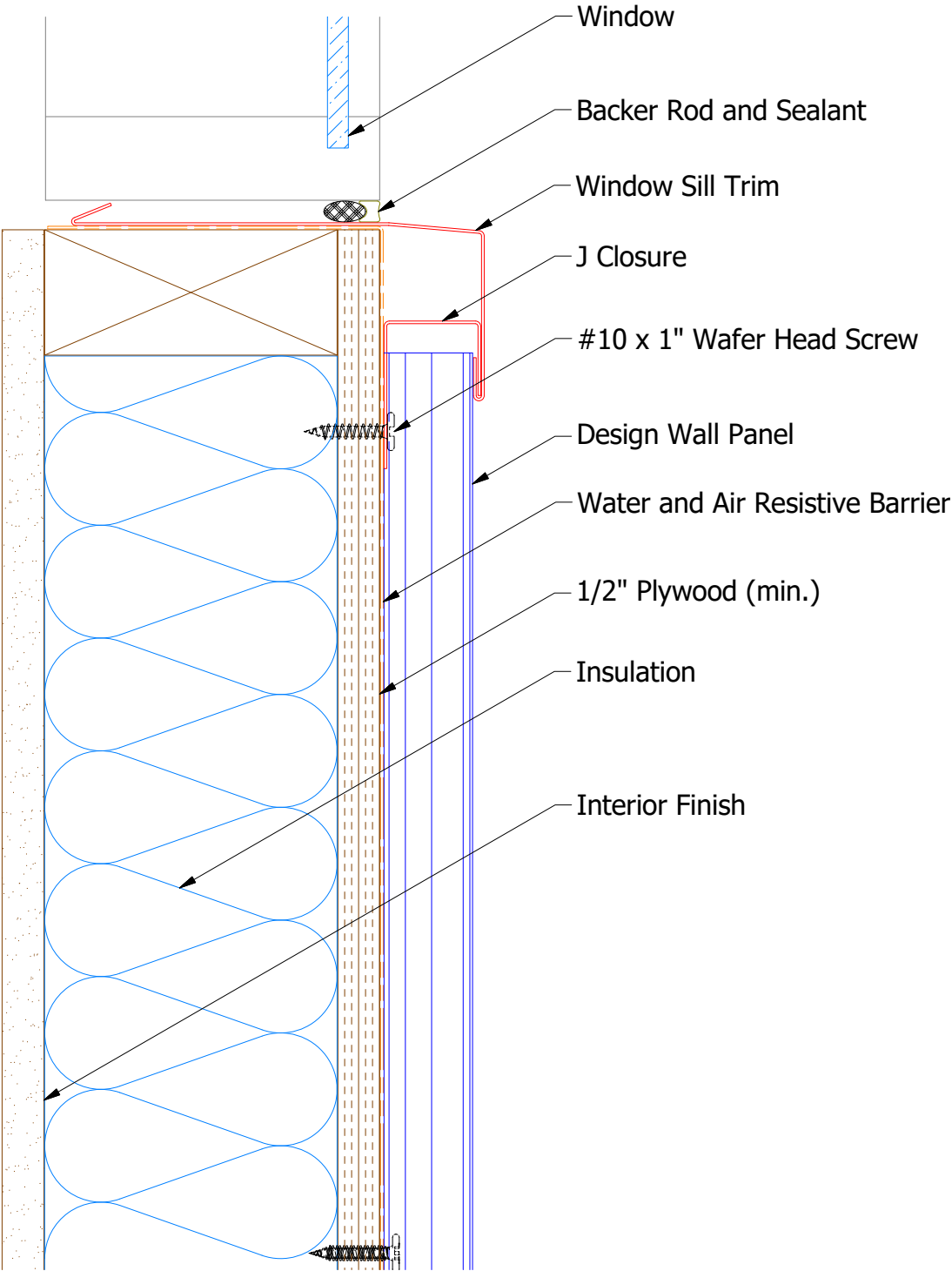
Vertical Panel



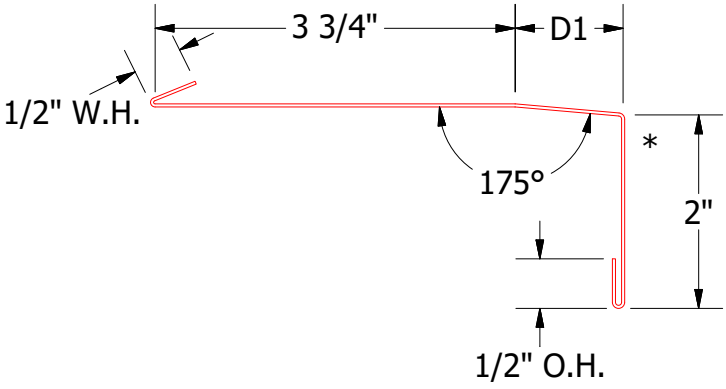
Note: * denotes color side.
Note: stainless steel pop rivets maybe needed along with VHB tape for longer panels.

ATAS INTERNATIONAL, INC Allentown PA 610-395-8445 Mesa AZ 480-558-7210				TITLE Design Wall Jamb Detail			
DWG. NO.		DR		DATE		6/27/2016	
01		7/19/2021		DMR		DATE	
REV. NO.		DATE		DESCRIPTION OF REVISION		BY	
01		7/19/2021		Changed Pop Rivets to VHB Tape		DMR	
MATERIAL		SH. SIZE		SCALE		X:X	
		B					

Vertical Panel



J Closure
DWA270: D2= 1 1/8"
DSA270: D2= 1 7/8"



Window Sill Trim
DWA670: D1= 1 1/8"
DSA670: D1= 1 7/8"

Note: * denotes color side.

TITLE			
Design Wall Window Sill Detail			
DWG. NO.		DR	DATE
		DMR	6/29/2016
REV. NO.		APP	DATE
01		DAS	7/26/16
DATE		SH. SIZE	SCALE
7/19/2021		B	X:X
DESCRIPTION OF REVISION		BY	APP
Changed Pop Rivets to VHB Tape		DMR	



ATAS INTERNATIONAL, INC
Allentown PA
610-395-8445
Mesa AZ
480-558-7210