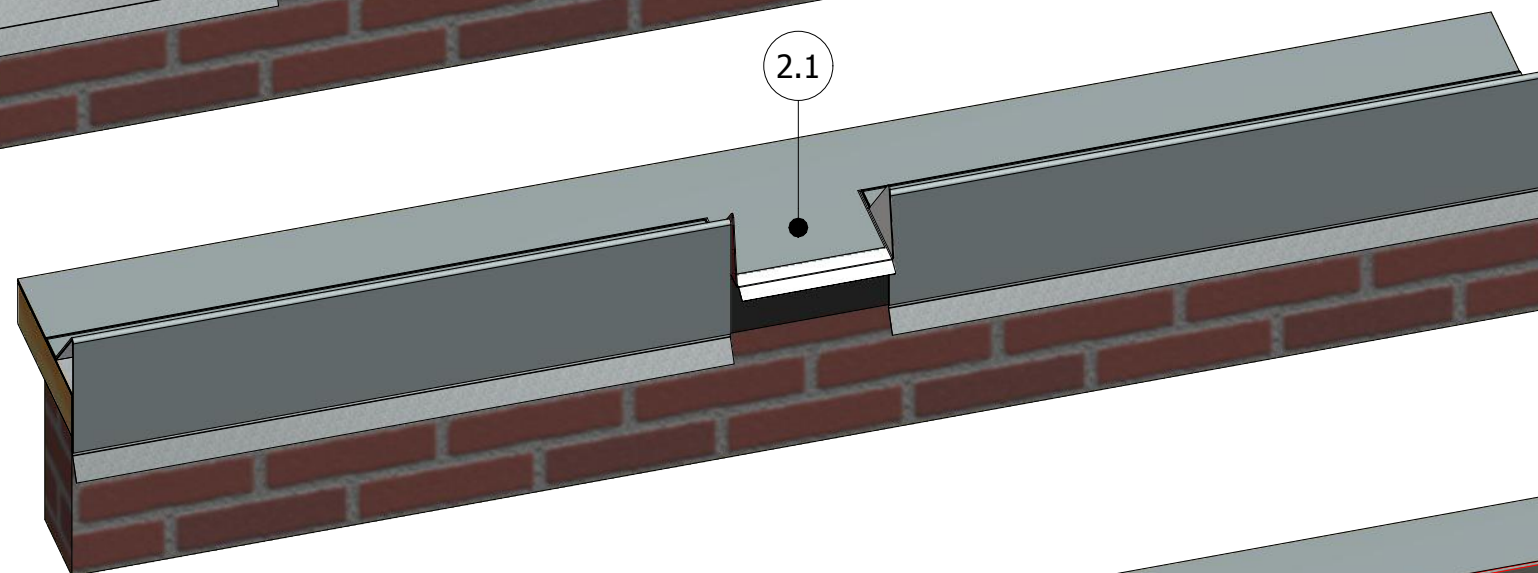
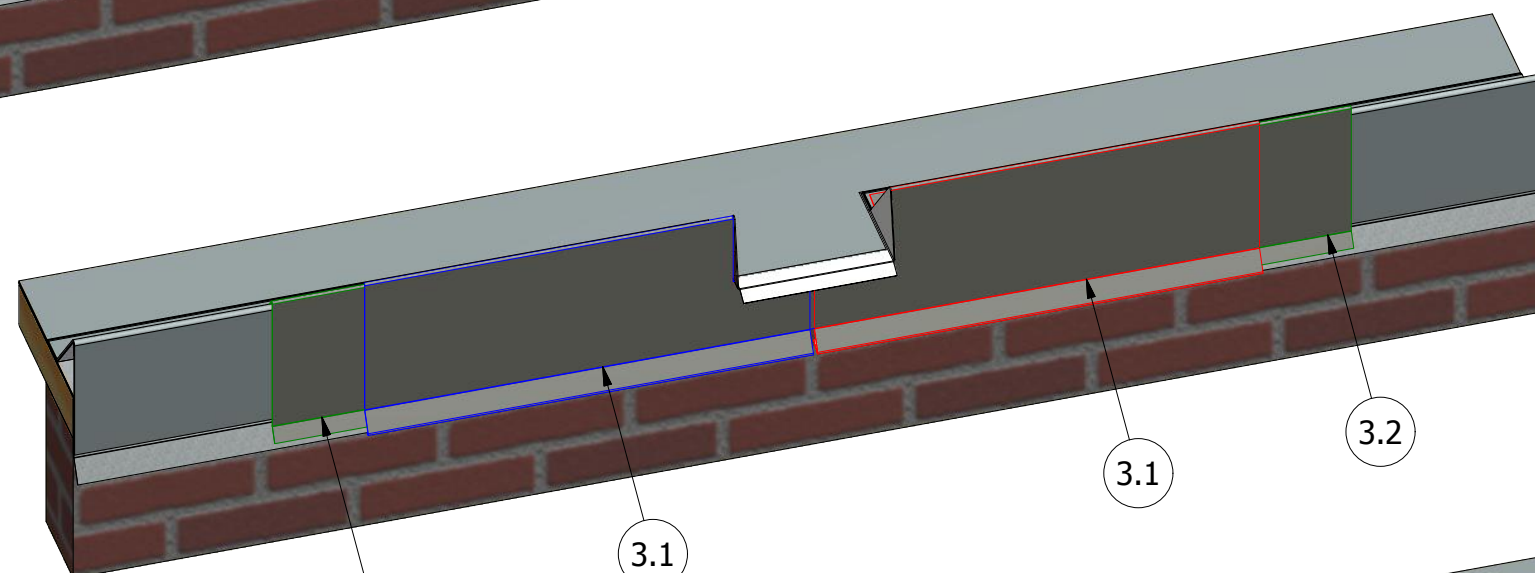


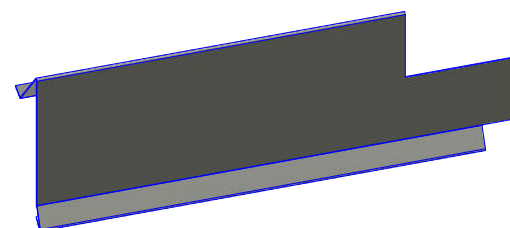
Step 1



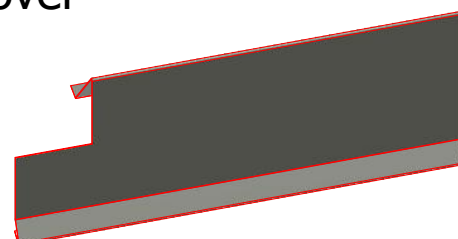
Step 2



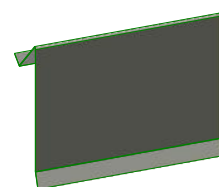
Step 3



Right Trim Cover



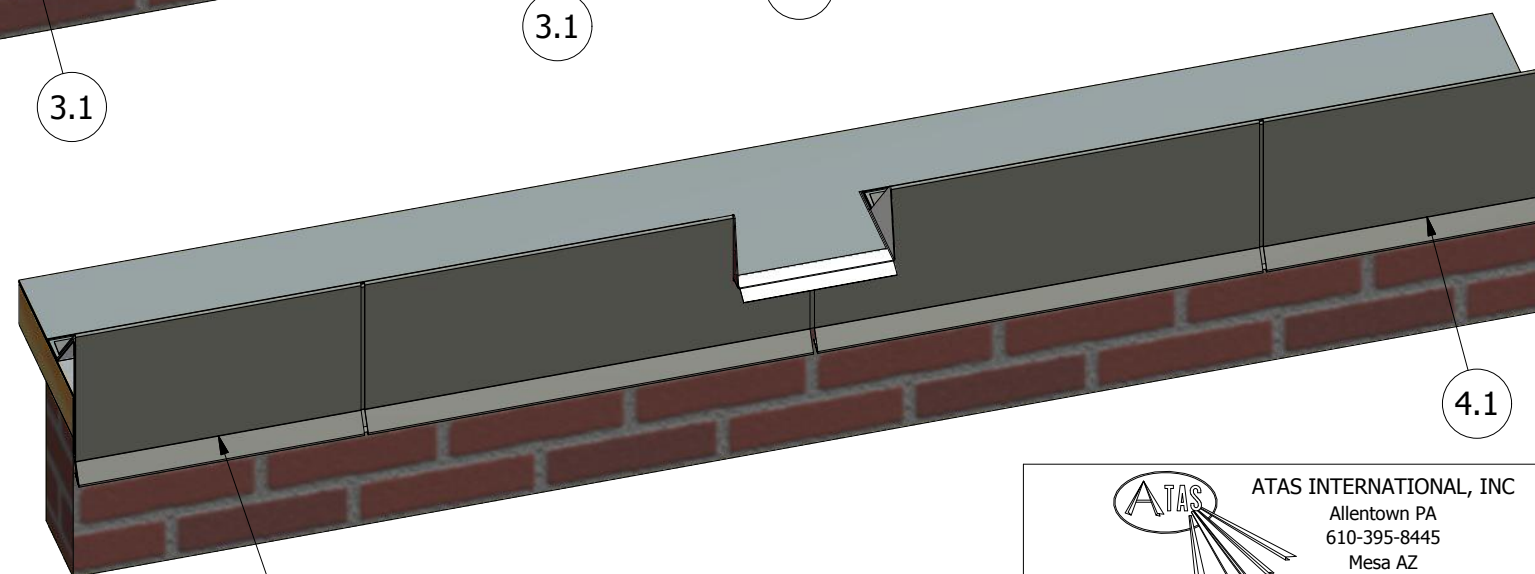
Left Trim Cover



Splice



Spillout



Step 4

Step 1.1 Install Spillouts at specified locations with 1 1/2" Ring Shank Nails.

Step 1.2 Install Cleats around Spillouts with 1 1/2" Ring Shank Nails.

Step 2.1 Install Strip-in Membrane over Cleats as normal and on top of Spillouts as shown.

Step 3.1 Install Left and Right Fascia Trim Covers around the Spillout. Trims will be factory notched to be overlapped.

Step 3.2 Install Splices on both sides of Left and Right Trim Covers.

Step 4.1 Continue installing as usual.

					<div><div>ATAS</div><div>INTERNATIONAL, INC</div><div>Allentown PA</div><div>610-395-8445</div><div>Mesa AZ</div><div>480-558-7210</div></div>				
					TITLE Edge Lok 2 Fascia Spillout Detail				
						DWG. NO.		DR KRK	DATE 5/21/2018
								APP	DATE
						MATERIAL		SH. SIZE B	SCALE X:X
REV. NO.	DATE	DESCRIPTION OF REVISION			BY	APP			