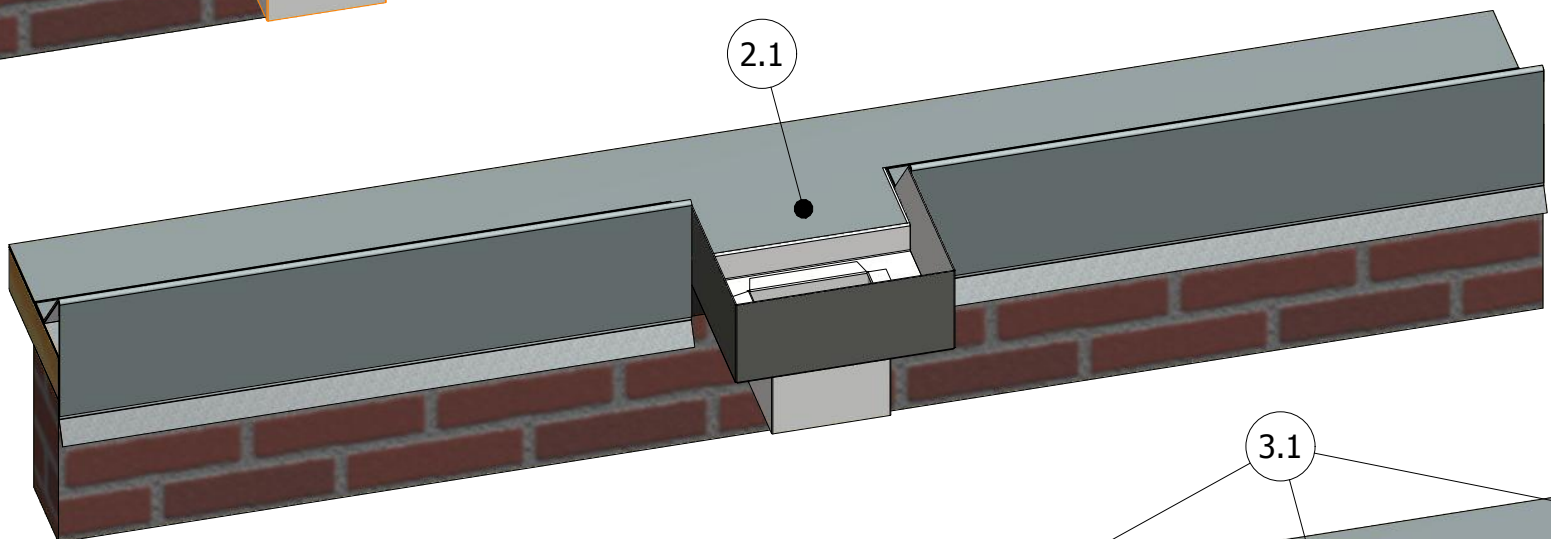
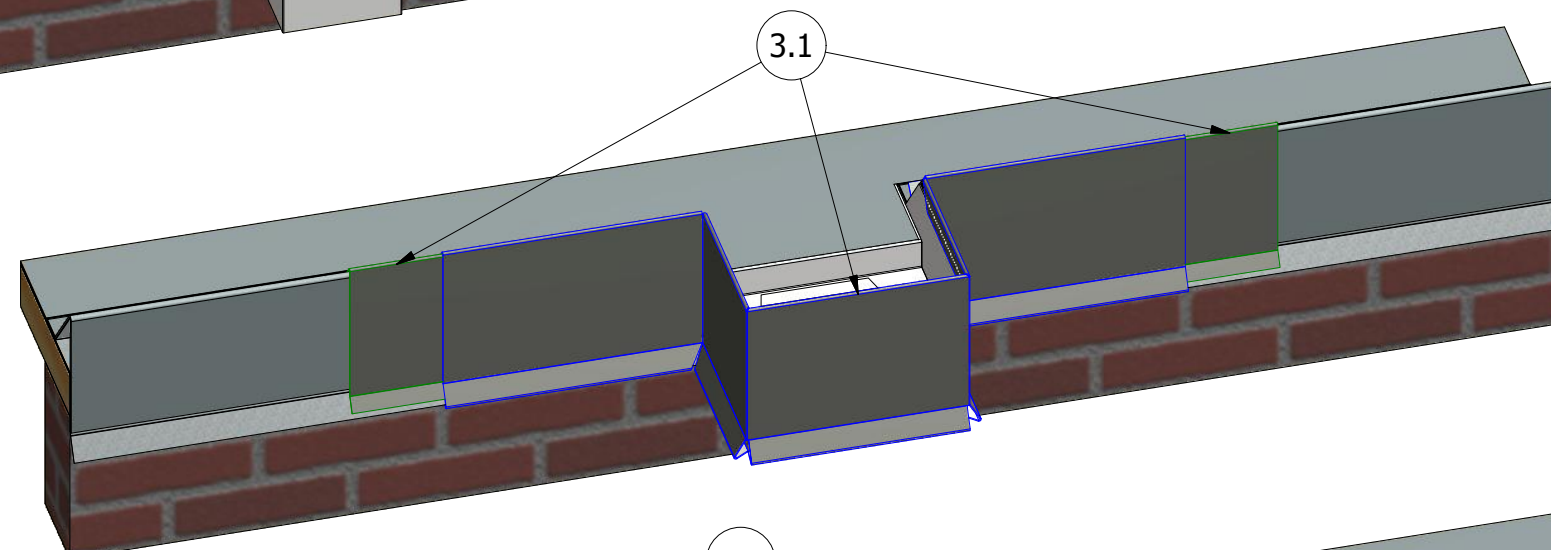


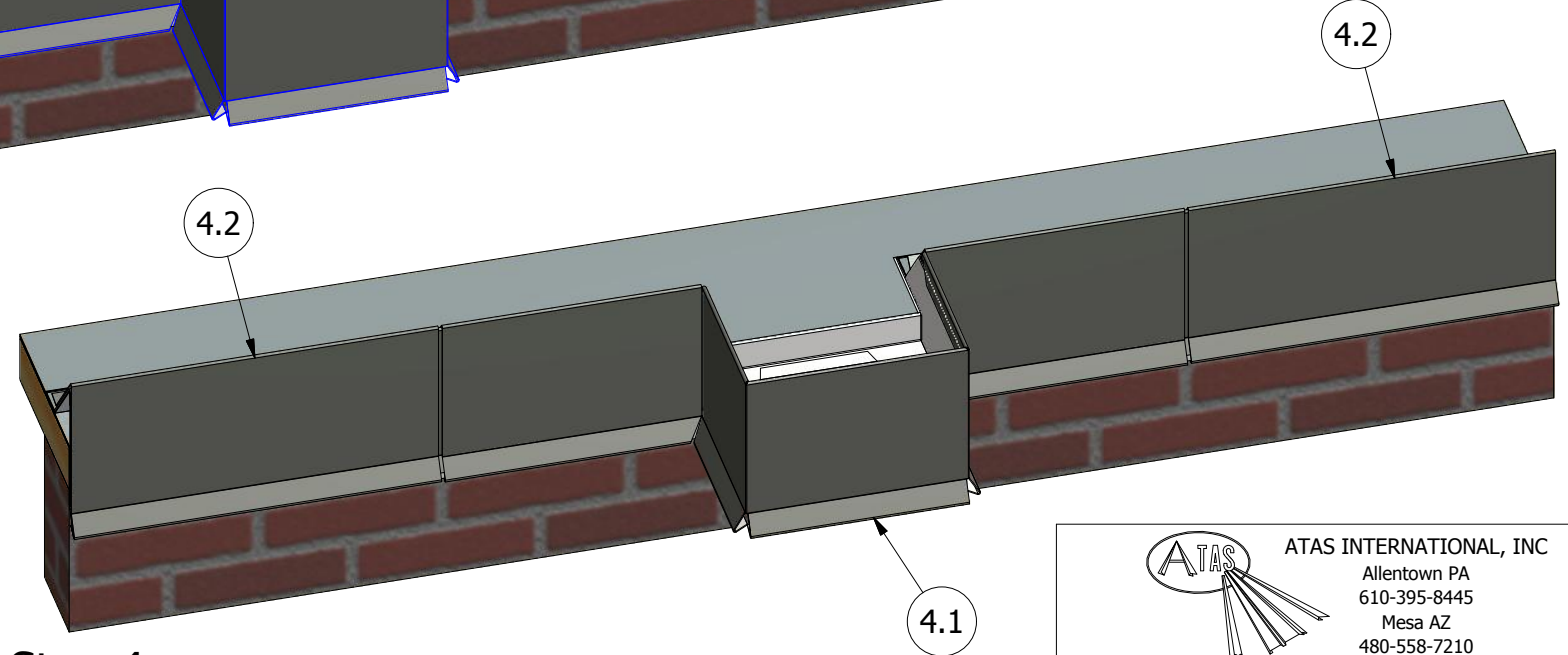
Step 1



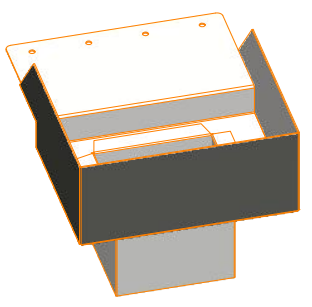
Step 2



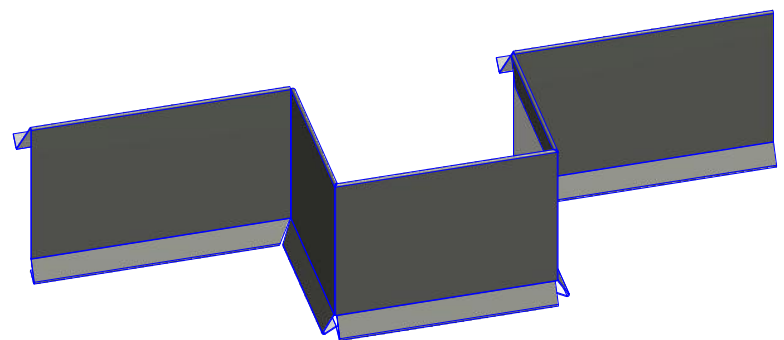
Step 3



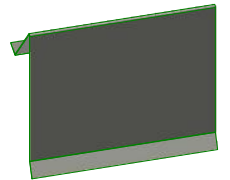
Step 4



Sump



Sump Cover Trim



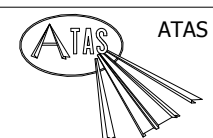
Splice

Step 1.1 Install Sumps at specified locations with 1 1/2" Ring Shank Nails.
Step 1.2 Install Cleats around Sumps with 1 1/2" Ring Shank Nails.

Step 2.1 Install Strip-in Membrane over cleats as normal and on top of Sumps as shown.

Step 3.1 Install Sump Cover Trim with Splices.

Step 4.1 Install Downspout to Sump. (not shown)
Step 4.2 Continue Installing as usual.



ATAS INTERNATIONAL, INC
 Allentown PA
 610-395-8445
 Mesa AZ
 480-558-7210

TITLE			
Edge Lok 2 Fascia Sump Detail			
DWG. NO.	DR	KRK	DATE 5/21/2018
MATERIAL	APP		DATE
SH. SIZE	B	SCALE	X:X

REV. NO.	DATE	DESCRIPTION OF REVISION	BY	APP