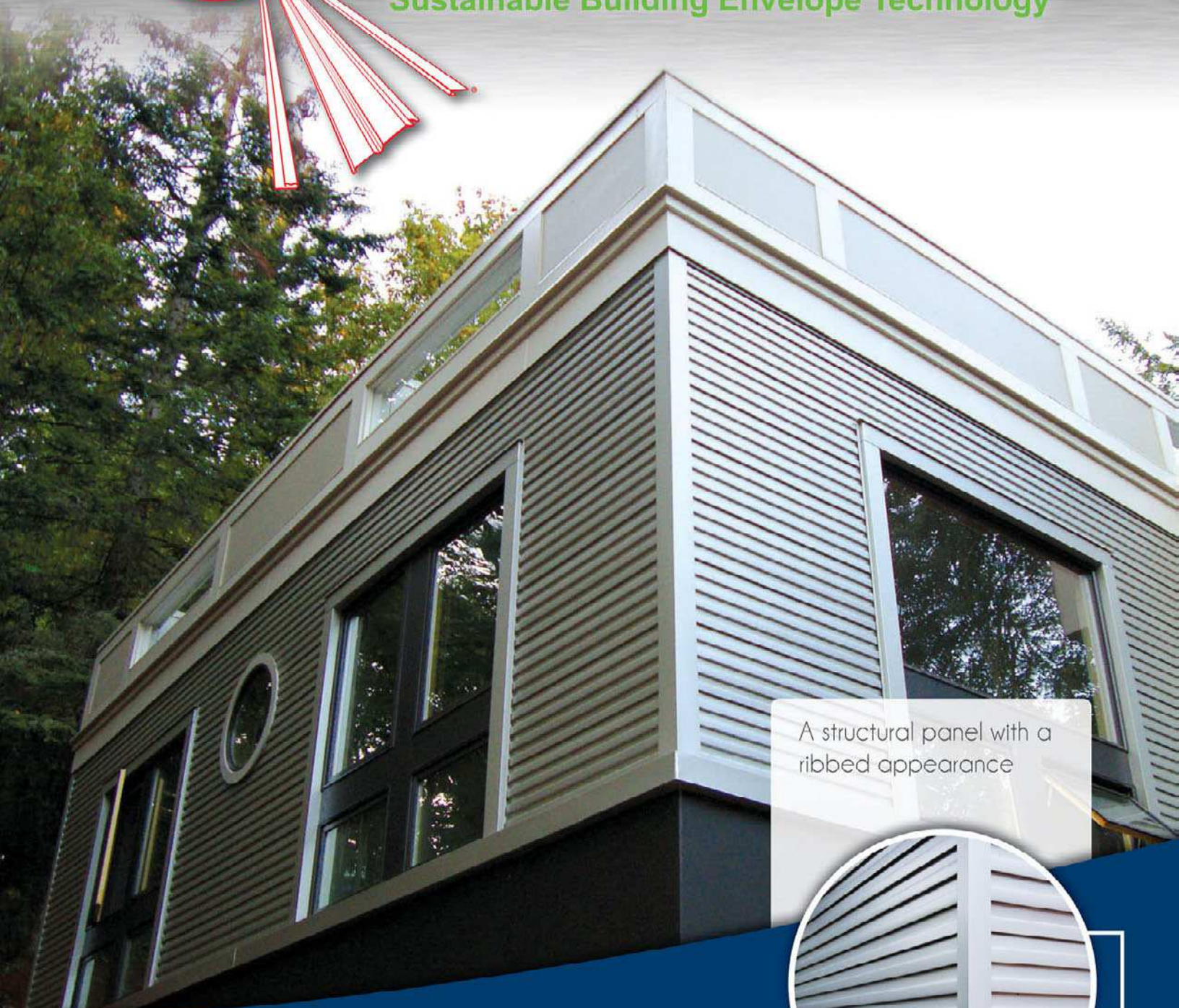




# ATAS International, Inc.

Sustainable Building Envelope Technology



A structural panel with a ribbed appearance



STRUCTURAL STYLE

**METAFOR**<sup>TM</sup>





# The architectural ribbed panel: **Metafor™**



Metafor is a structural panel with a ribbed appearance and a concealed fastening system, available in a 12" width.

## Features

### APPLICATION

- Installed horizontally or vertically
- Ease of installation - can be applied directly to solid decking or open framing
- Typical applications include walls, ceilings, fascias, mansards, equipment screens, and soffits
- Metafor™ is also suitable for walkways, balconies, entrances, and vestibules
- Curved panels available (Arc-Metafor) in convex or concave
- Available with perforations

### LONGEVITY

- Fire resistant - will not burn or support combustion
- May be an Insurance advantage
- Will not warp, crack, rot or peel
- 30 Year Limited Warranty
- Resistant to high wind, torrential rain, heavy snow and ice loads
- High quality and time proven painting and pretreatment technologies
- PVDF Coating System

### PERFORMANCE STANDARDS

- Tested in accordance with ASTM E 84 Flame Spread
- Easily integrated into drainage plane wall construction for energy performance
- IBC Code Compliance





## Specifications

Metafor™ SKU: MFP120

### Gauge

.032, .040, .050 aluminum, 16\*, 20\* oz. copper

### Panel Width

12"

### Panel Length

Cut to customer specifications with a minimum of 1'-6", maximum to transportation limitations and/or product and project design considerations

### Panel Height

5/8"

### Texture

Embossed, Smooth

### Finish

Kynar 500® PVDF or Hylar 5000® PVDF

### Colors

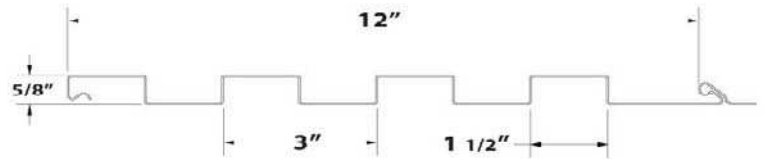
Choice of 31 standard colors

### Anodized

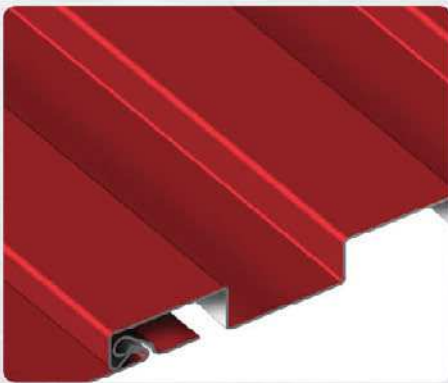
Clear, Dark Bronze

### Accessories

A complete line of trims available in matching colors, gauge, and finish or as specified

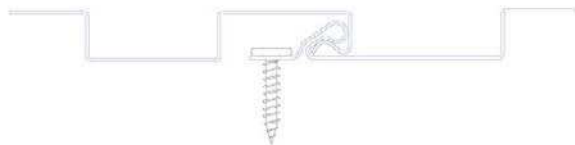


\*Subject to minimum quantities and lead time. Inquire for availability.



## Metafor™ Design Advantages

Metafor panels have a positive panel-to-panel interlock and can be combined with Corra-Lok and the Multi-Purpose system for the ability to create interesting patterns and breaks. The fasteners are hidden by the consecutive panel.



Integral lock and seam design guards against wind-driven rain and wind uplift.

STANDARD COLORS

Black (02) SRI: 1	Hartford Green (27) SRI: 23	Regal Blue (18) SRI: 23
Classic Bronze (01) SRI: 2	Forest Green (11) SRI: 29	Siam Blue (14) SRI: 35
Medium Bronze (03) SRI: 33	Hemlock Green (30) SRI: 30	Slate Blue (21) SRI: 31
Chocolate Brown (04) SRI: 25	Patina Green (12) SRI: 47	Rocky Grey (16) SRI: 29
Sierra Tan (09) SRI: 37	Teal (19) SRI: 26	Charcoal Grey (62) SRI: 27
Sandstone (06) SRI: 66	Slate Grey (20) SRI: 39	Dove Grey (13) SRI: 58
Concord Cream (05) SRI: 78	Ascot White (10) SRI: 96	Bone White (26) SRI: 85

PREMIUM FINISH

Clear Anodized (70) SRI: 92	Dark Bronze Anodized (71) SRI: 6
Boysenberry (25) SRI: 27	Redwood (07) SRI: 18
Mission Red (08) SRI: 33	Rawhide (15) SRI: 64

PREMIUM FINISH

Silversmith (28) SRI: 51	Antique Patina (24) SRI: 25
Brite Red (17) SRI: 39	Champagne (31) SRI: 62
Coppertone (23) SRI: 57	Titanium (35) SRI: 59



# THE ATAS DIFFERENCE



**Metafor roll former with in line leveler**

- Stationary machine
- Controlled environment
- 20 forming stations
- In line precision leveling

ATAS's professional staff is able to assist in the design or provide shop drawings for your project. Final choice of materials and installation is the responsibility of the owner, architect and/or the owner's agent. ATAS International, Inc. cannot be held responsible for the ultimate selection or the installation of those materials. Due to slight stress in metal materials and substrates to which metal panels are applied, installed panels may exhibit a perceived waviness in the flat areas of the panel. Commonly the period and amplitude of the waviness is dependent upon the continuous flat width of the panel. This condition is beyond the control of ATAS and consequently this perceived waviness or "oil canning" of the product is not a valid reason for rejection of materials. (Refer to ASTM E 1514, ASTM E 1637 and Metal Construction Association Technical Bulletin 1060 for further clarification). ATAS reserves the right to modify, eliminate and/or change its products without prior notification. ATAS cannot be held responsible for errors in line drawings and typesetting. Inquire for availability. Colors are as close to the actual colors as modern printing allows. Exact color chips on request; this is a requirement for all premium colors. If you have requirements or preference for colors or finishes other than shown, contact ATAS. Color availability varies by material, gauge and profile. ATAS is not responsible for colors selected from this chart. Contact ATAS for more information.

## ATAS International, Inc.

Allentown, PA ▪ Mesa, AZ ▪ Maryville, TN

800.468.1441 | [www.atas.com](http://www.atas.com) | [info@atas.com](mailto:info@atas.com)

© 2015 ATAS International, Inc.

Contact ATAS for more information. ATAS reserves the right to modify, eliminate and/or change its products without prior notification.

LRD0415 LAT124

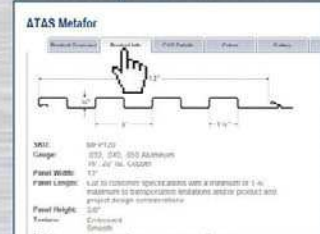
Visit us online



Try our product visualizer



Get product info.



Download CAD Details



Browse photos



View tech. data



Metafor™ is a trademark of ATAS International, Inc. Kynar 500® PVDF is a registered trademark of Arkema. Hylar 5000® PVDF is a registered trademark of Solvay Plastics.