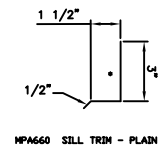
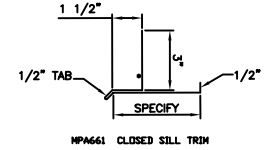


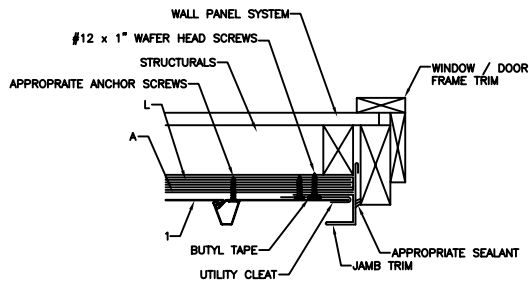
SILL DESIGNS - VARIES PER SITE/SPECIFICATION



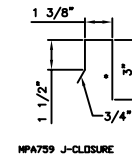
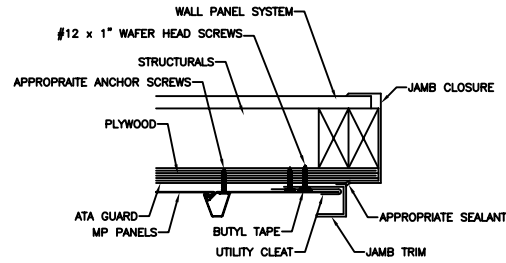
MPA660 SILL TRIM - PLAIN



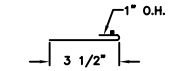
MPA661 CLOSED SILL TRIM



JAMB DESIGNS - VARIES PER SITE/SPECIFICATION

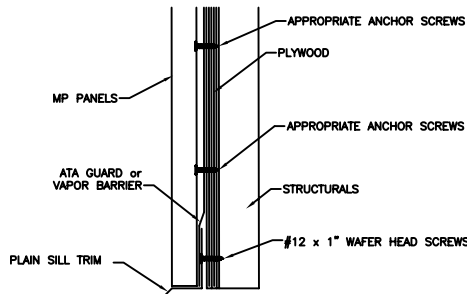


MPA759 J-CLOSURE

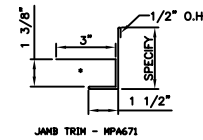
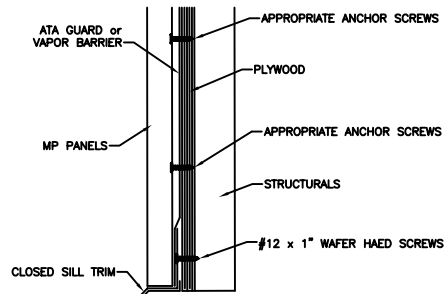


MPA962 UTILITY CLEAT

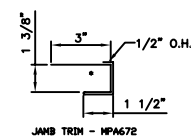
Leave 1" gap open to receive the panel edge.



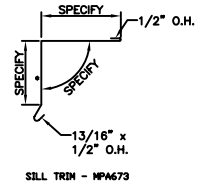
HEADER DESIGNS - VARIES PER SITE/SPECIFICATION



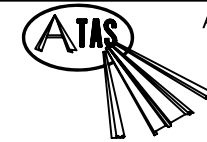
JAMB TRIM - MPA671



JAMB TRIM - MPA672



SILL TRIM - MPA673



ATAS INTERNATIONAL, INC.  
 Allentown PA  
 610-395-8445  
 Mesa AZ  
 480-558-7210

TITLE		<b>Multi - Sill Head Jamb - ply</b>			
DWG NO. / FILE NO.	<b>Multi - Sill Head Jamb - ply</b>			SCALE	3"=1'-0"
DRAWN BY	DAS	DATE	3-6-06	APPR. BY	JEB
DATE	6-1-06				
REVISION NO.	XXXX	REVISION DATE	MM/DD/YY	APPR. BY	XXXX
DATE	MM/DD/YY	APPR. DATE	MM/DD/YY		

Rev. No.	Revision Date	Drawn By	Description of Revision
0	6-1-06	DAS	<b>Multi - Sill Head Jamb - ply</b>