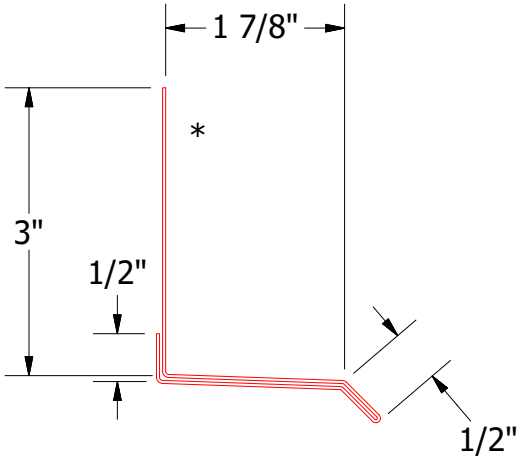



Starter Cleat



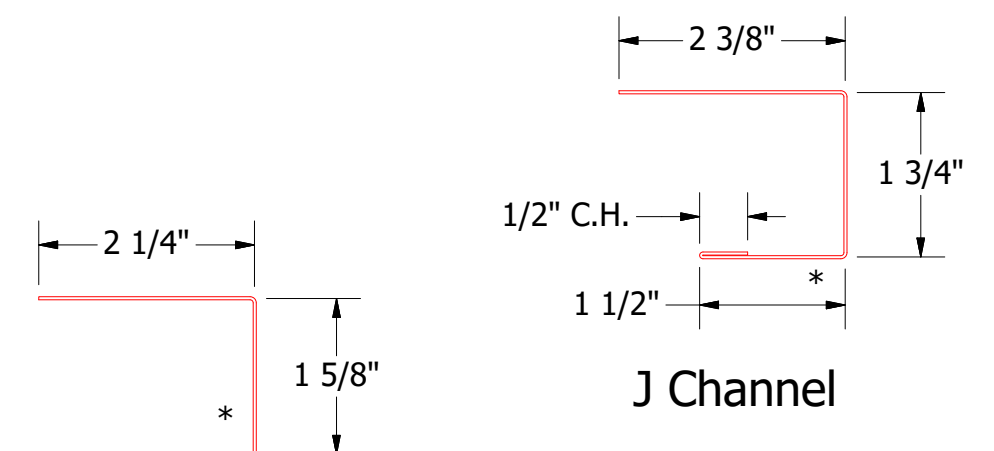
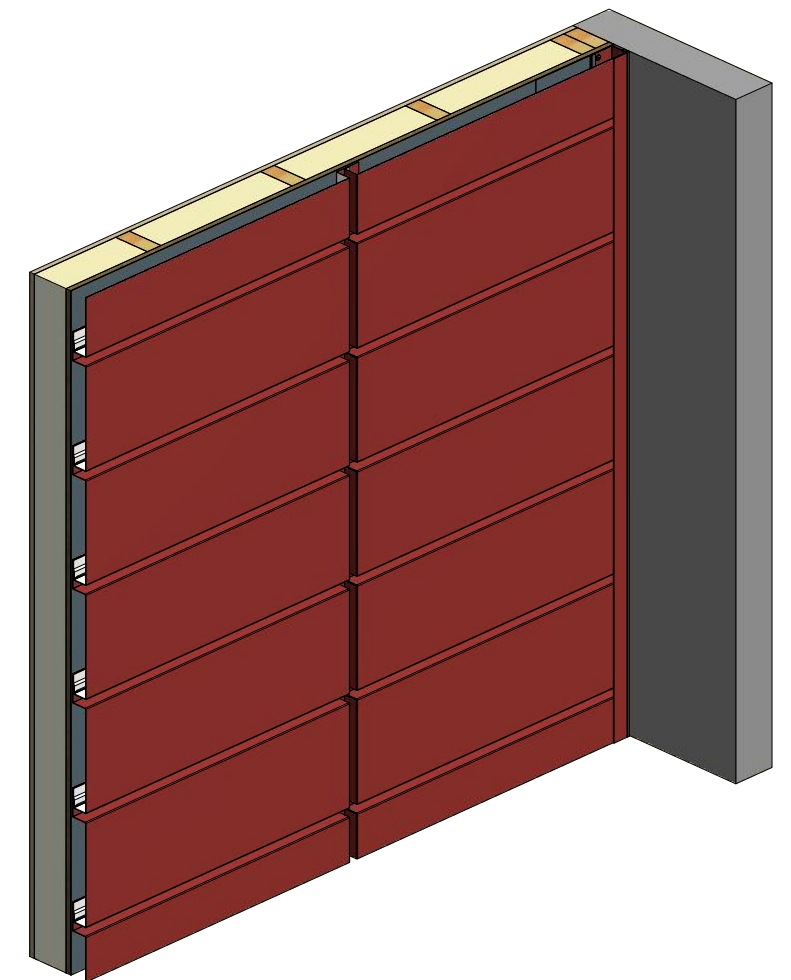
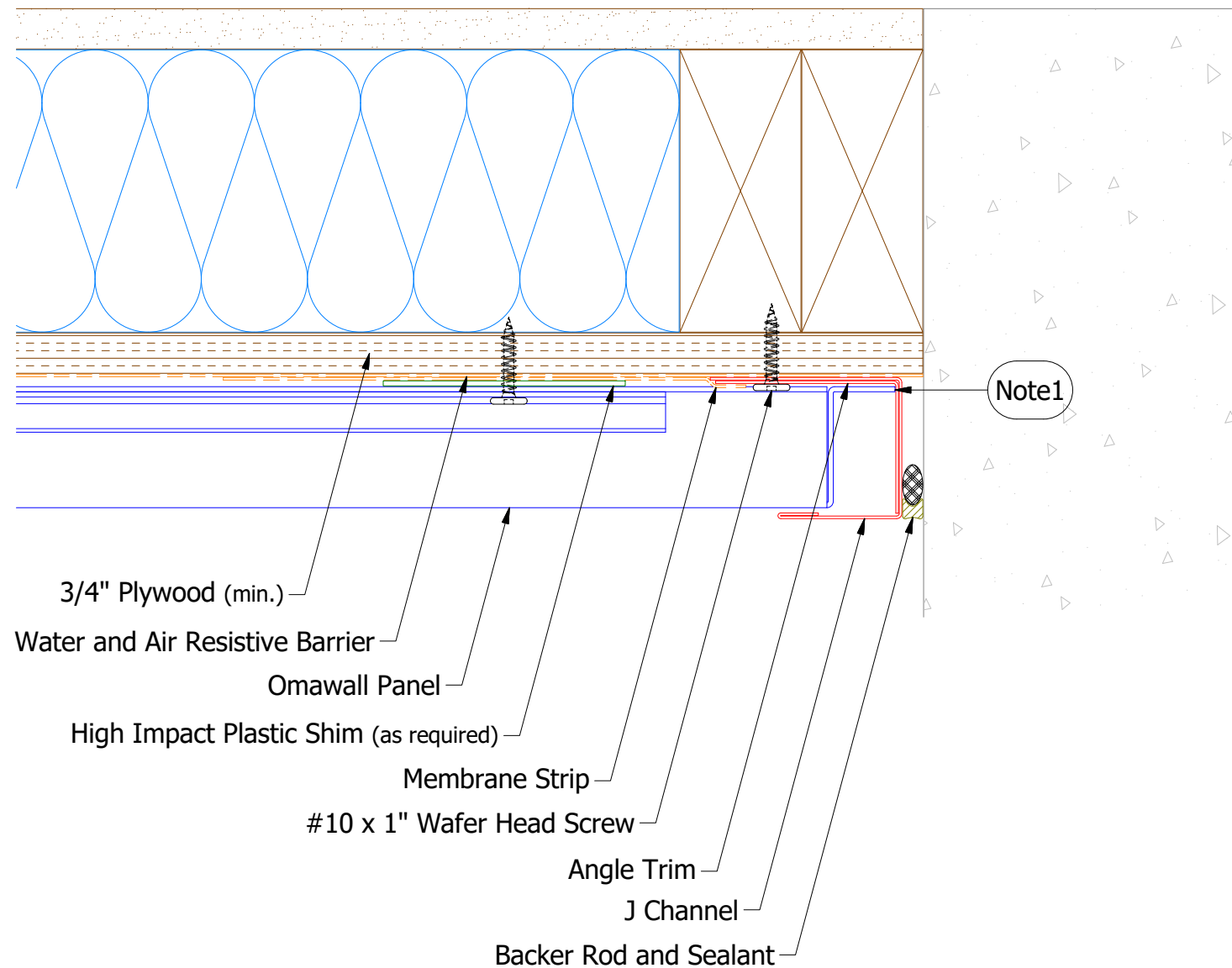
Base Trim



ATAS INTERNATIONAL, INC
Allentown PA
610-395-8445
Mesa AZ
480-558-7210

TITLE Omawall Base Detail			
DWG. NO.		DR KRK	DATE 1/26/2021
MATERIAL		APP	DATE
REV. NO.	DATE	DESCRIPTION OF REVISION	BY APP
01	10/8/2021	Updated Membrane Strip Location	KRK
SH. SIZE	B	SCALE	X:X

Note: * denotes color side.

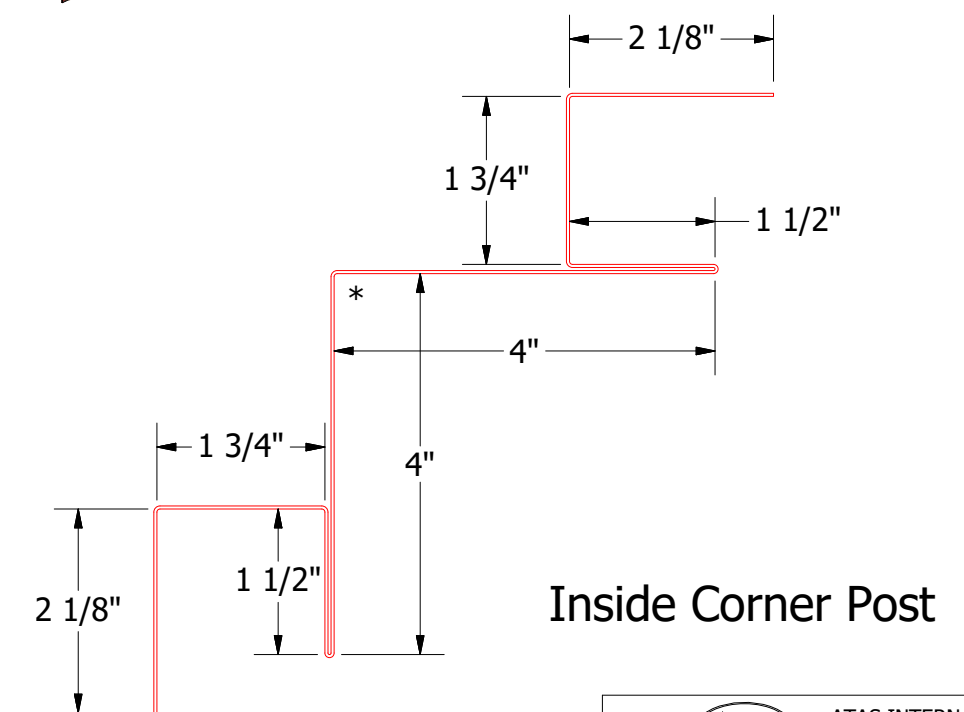
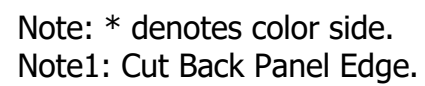


Angle Trim

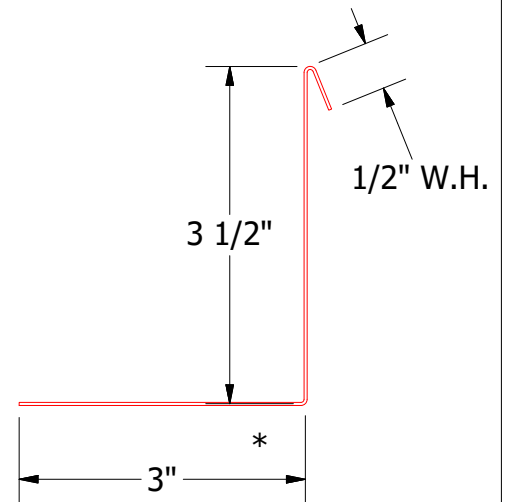
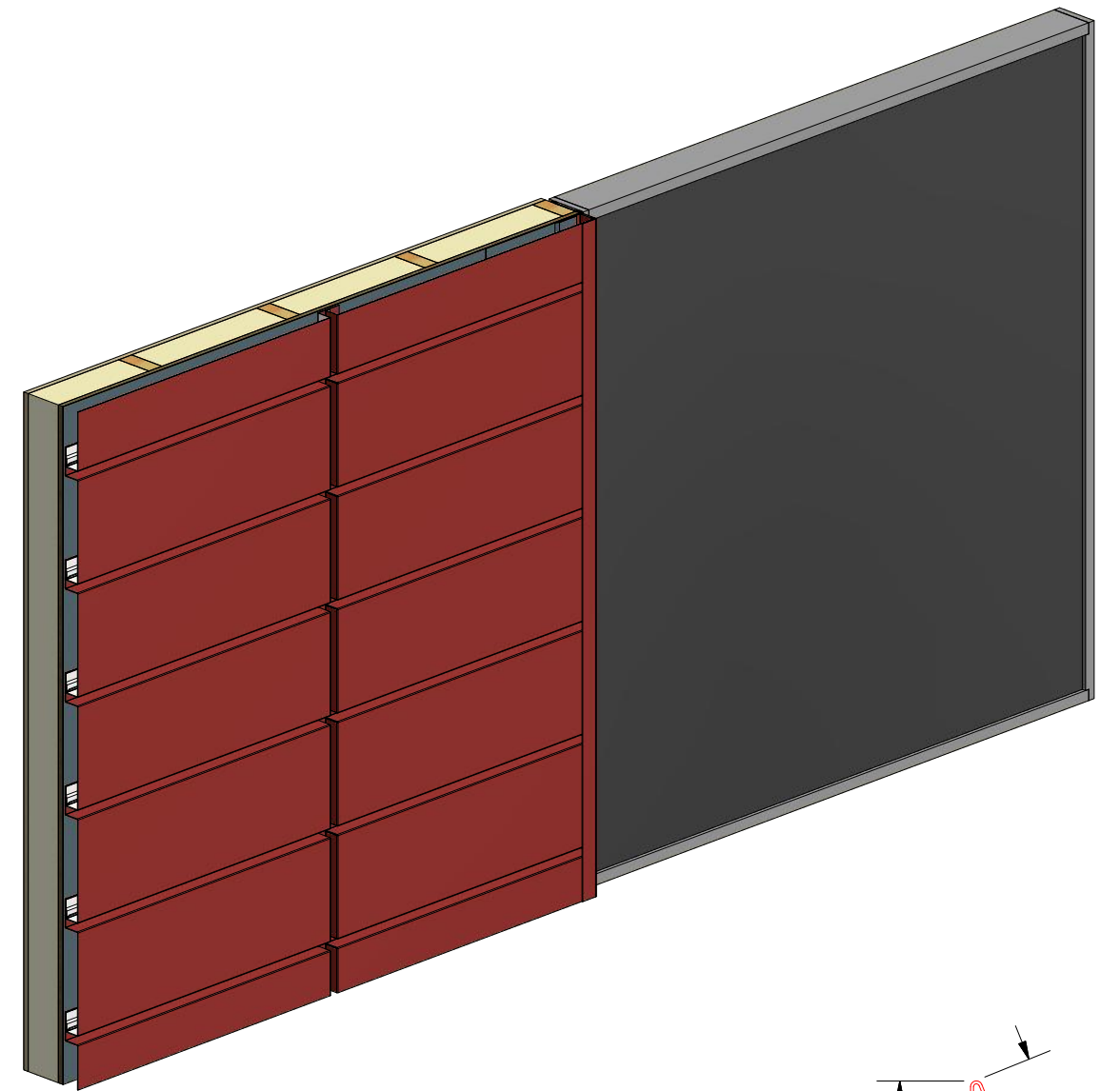
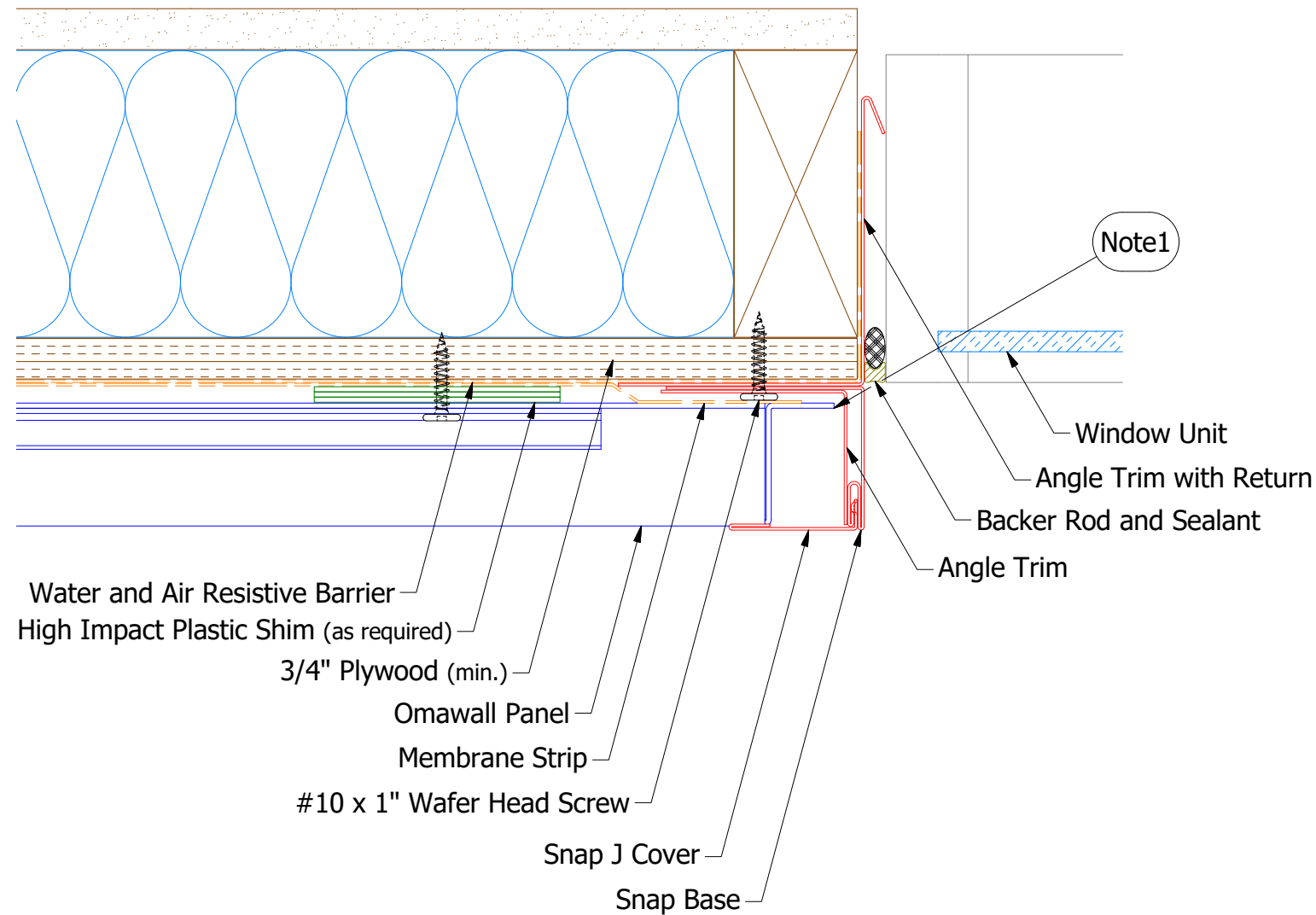
J Channel

Note: * denotes color side.
Note1: Cut Back Panel Edge.

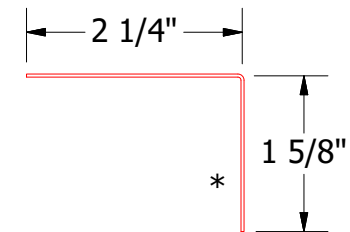
					TITLE							
					Omawall Endwall Detail							
					DWG. NO.			DR	KRK	DATE	1/26/2021	
								APP		DATE		
					MATERIAL			SH. SIZE	B	SCALE	X:X	
REV. NO.	DATE	DESCRIPTION OF REVISION		BY	APP							



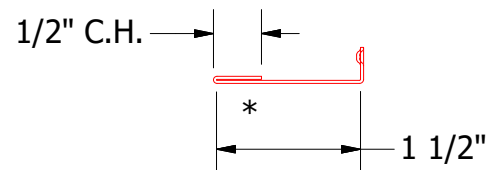
					TITLE		
					Omawall Inside Corner Detail		
					DWG. NO.		DR KRK DATE 1/27/2021
					MATERIAL		APP DATE
REV. NO.	DATE	DESCRIPTION OF REVISION	BY	APP	SH. SIZE B		SCALE X:X



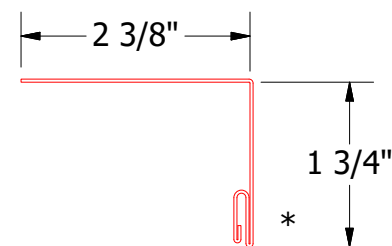
Angle Trim with Return



Angle Trim



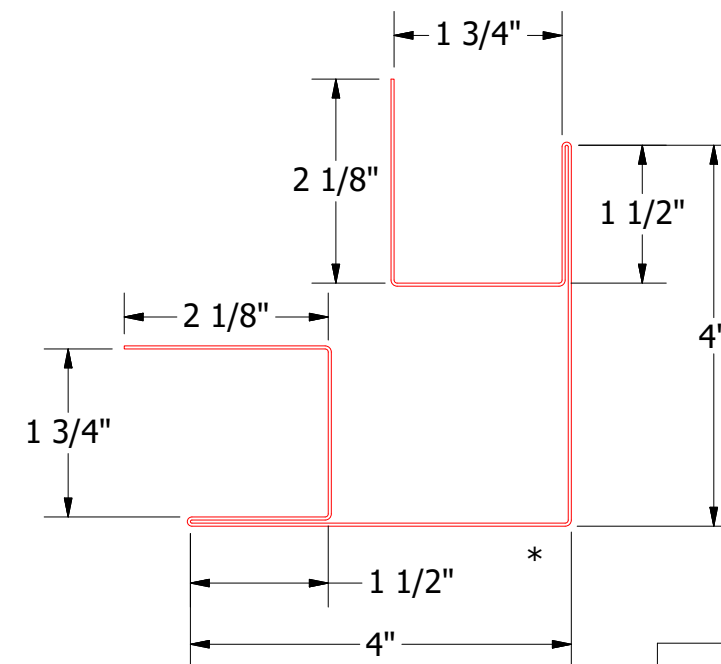
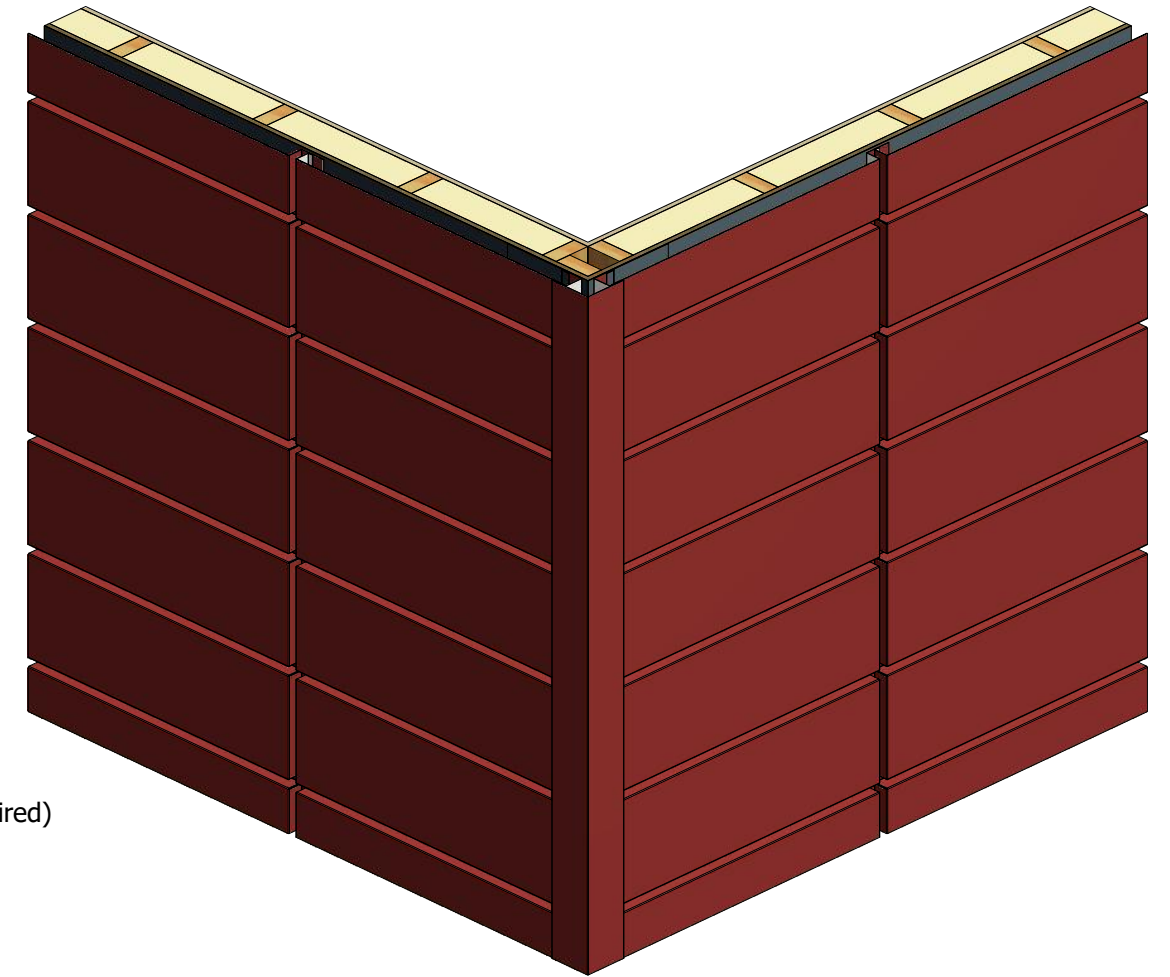
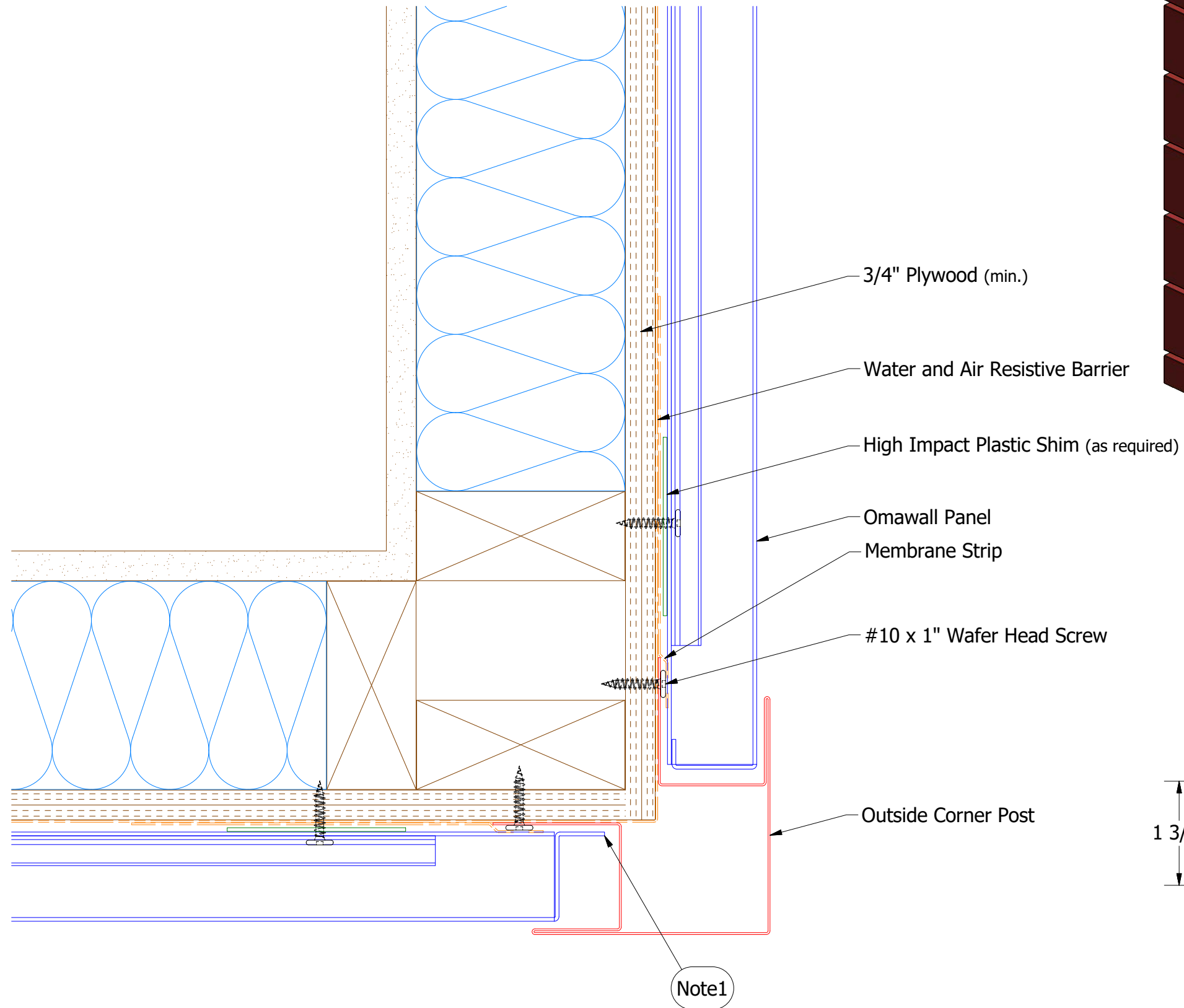
Snap J Cover



Snap Base

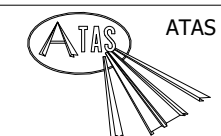
Note: * denotes color side.
Note1: Cut Back Panel Edge.

REV. NO.				DATE				DESCRIPTION OF REVISION				BY				APP			
TITLE				Omawall Jamb Detail				DR				DATE				SH. SIZE			
DWG. NO.				APP				KRK				1/28/2021				SCALE			
MATERIAL				B				X:X											



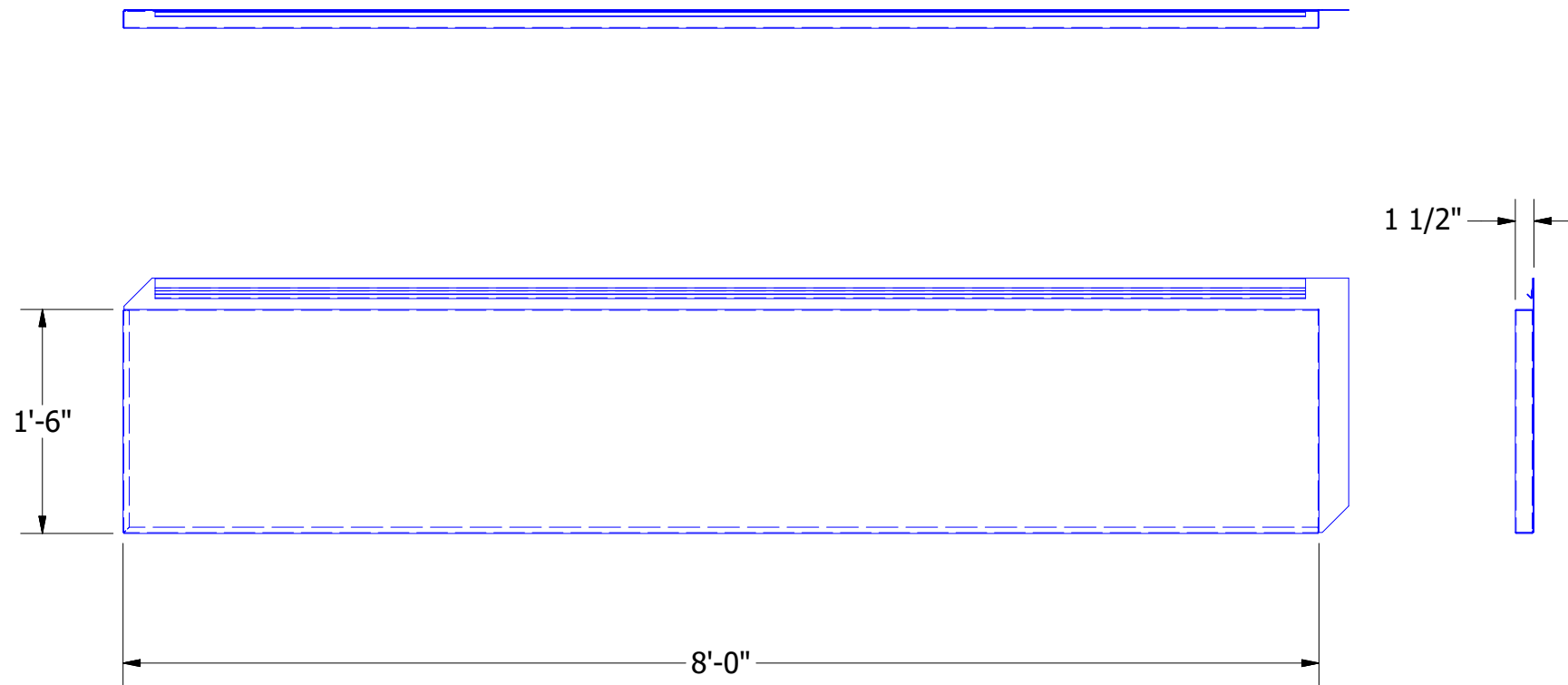
Outside Corner Post

Note: * denotes color side.
 Note1: Cut Back Panel Edge.

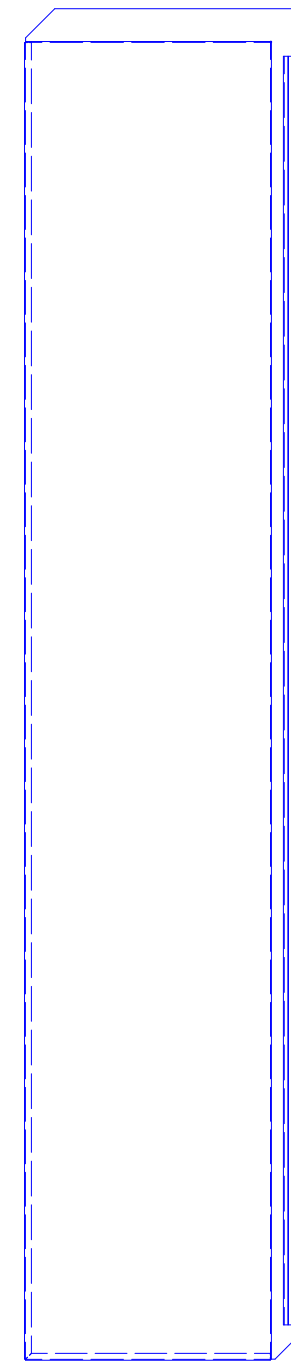


ATAS INTERNATIONAL, INC
 Allentown PA
 610-395-8445
 Mesa AZ
 480-558-7210

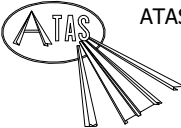
					TITLE Omawall Outside Corner Detail				
					DWG. NO.			DR KRK	DATE 1/27/2021
					MATERIAL			APP	DATE
								SH. SIZE B	SCALE X:X
REV. NO.	DATE	DESCRIPTION OF REVISION			BY	APP			



Omawall Horizontal Panel
(Standard Installation: Left to Right and Bottom to Top)



Omawall Vertical Panel
(Standard Installation: Left to Right and Bottom to Top)

					<div> ATAS INTERNATIONAL, INC Allentown PA 610-395-8445 Mesa AZ 480-558-7210</div>		
					TITLE Omawall Panel Detail		
		DWG. NO.			DR APP	KRK	DATE 2/22/2021
01	10/8/2021	Added Standard Installtion Direction			MATERIAL		
REV. NO.	DATE	DESCRIPTION OF REVISION			BY	APP	SH. SIZE SCALE
							B X:X

- Water and Air Resistive Barrier

— #10 x 1" Wafer Head Screw

— High Impact Plastic Shim (as required)

— Shop Applied Panel Clip

- Omawall Panel

- #10 x 1" Wafer Head Screw

– Shop Applied Panel Clip

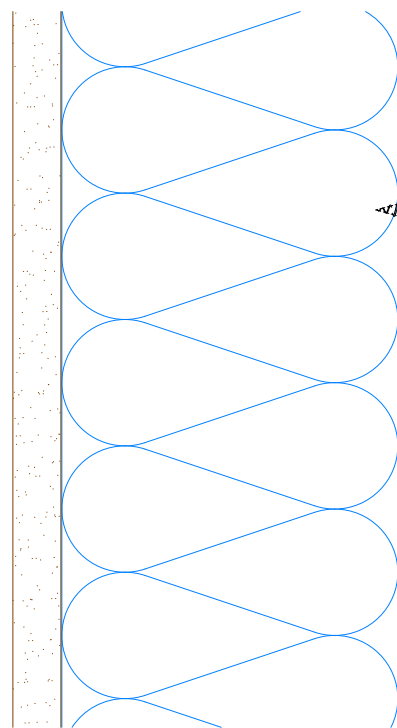
- Panel Reveal

- High Impact Plastic Shim (as required)

- Omawall Panel

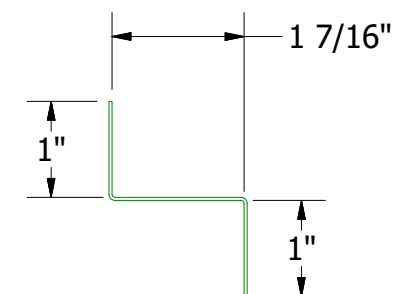
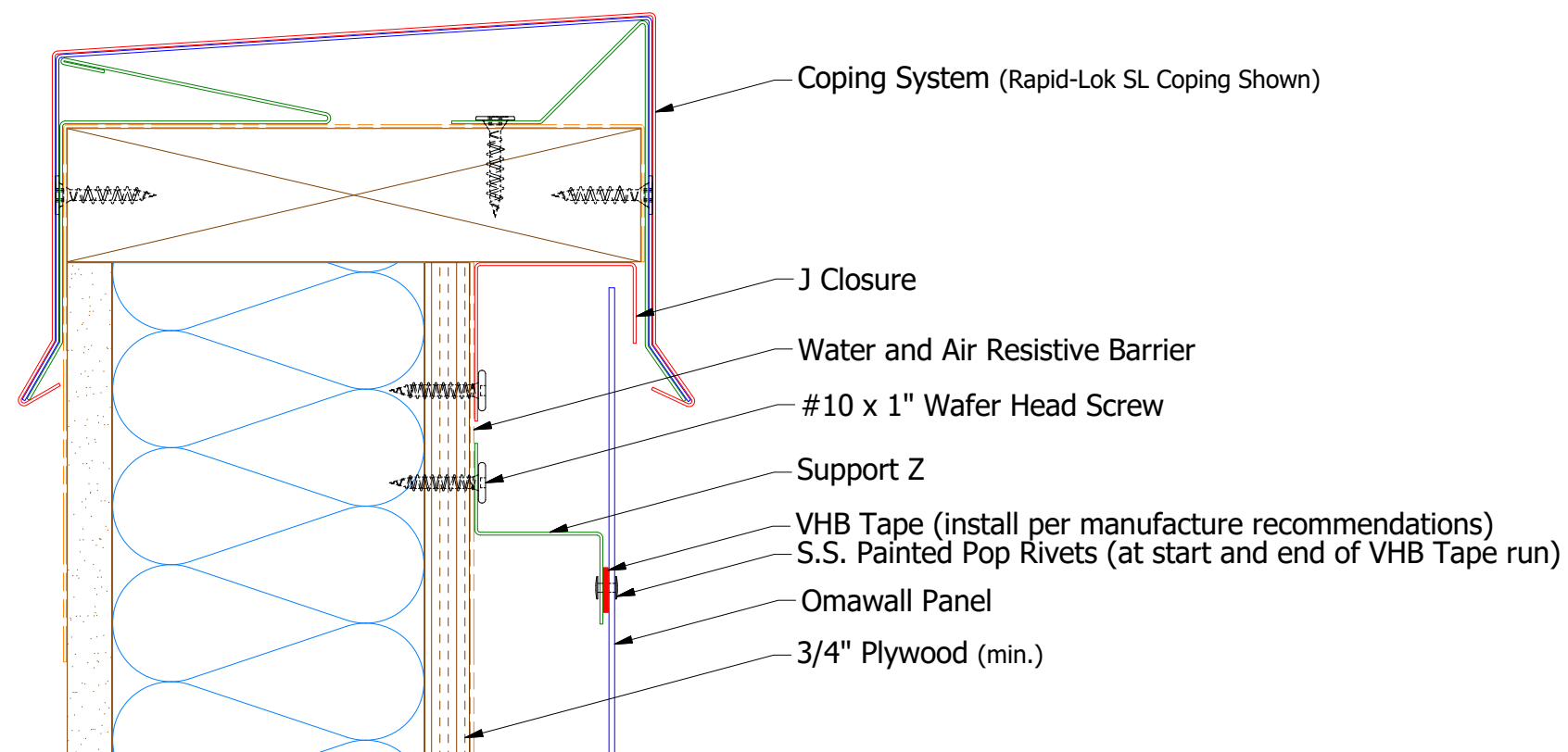
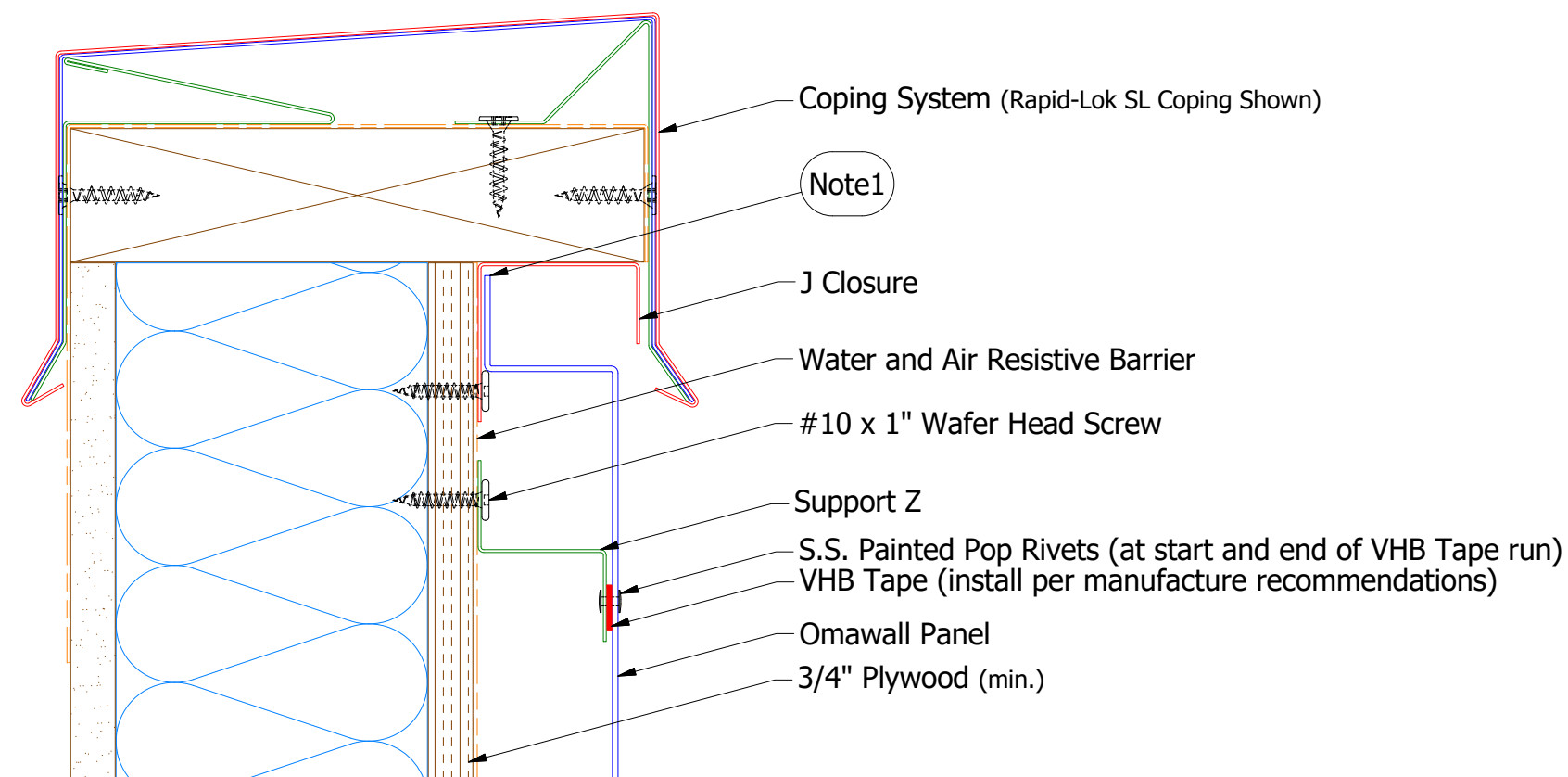
- Water and Air Resistive Barrier

— 3/4" Plywood (min.)

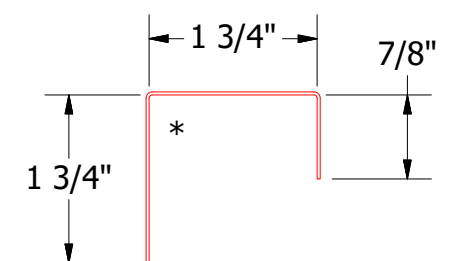


A 3D perspective view of a wall assembly. The wall is composed of multiple horizontal layers of red material, separated by thin blue vertical spacers. The top of the wall is capped with a yellow horizontal layer. Arrows labeled 'A' point to the horizontal joints between the red layers. Arrows labeled 'B' point to the vertical joints between the red layers.

						TITLE						Omawall Panel Reveal Detail							
						DWG. NO.						DR		KRK		DATE		1/29/202	
												APP				DATE			
						MATERIAL						SH. SIZE		B		SCALE		X:X	
REV. NO.		DATE		DESCRIPTION OF REVISION				BY		APP									

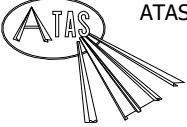


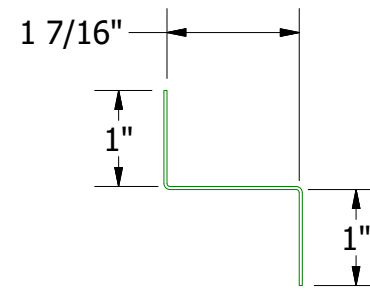
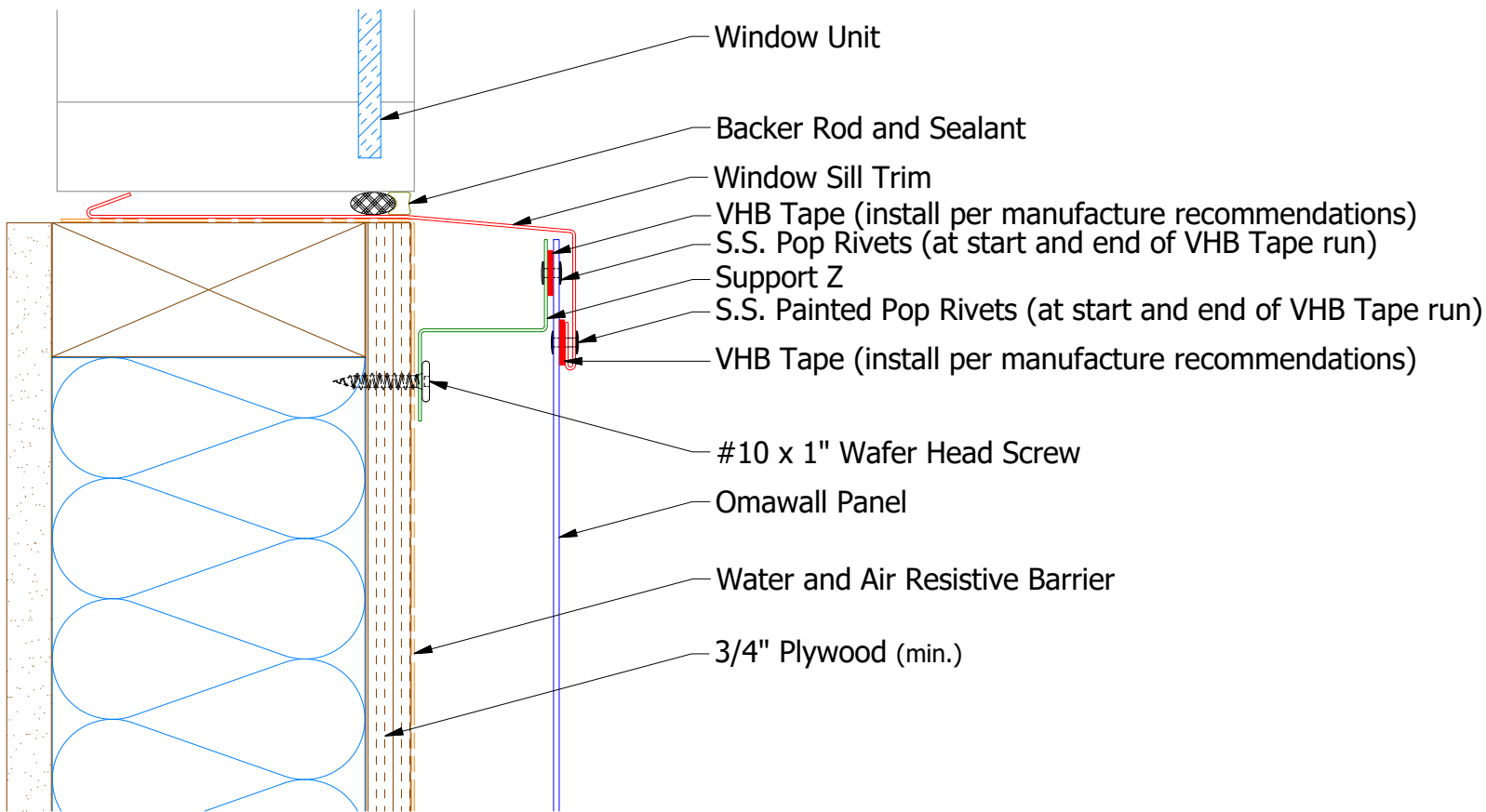
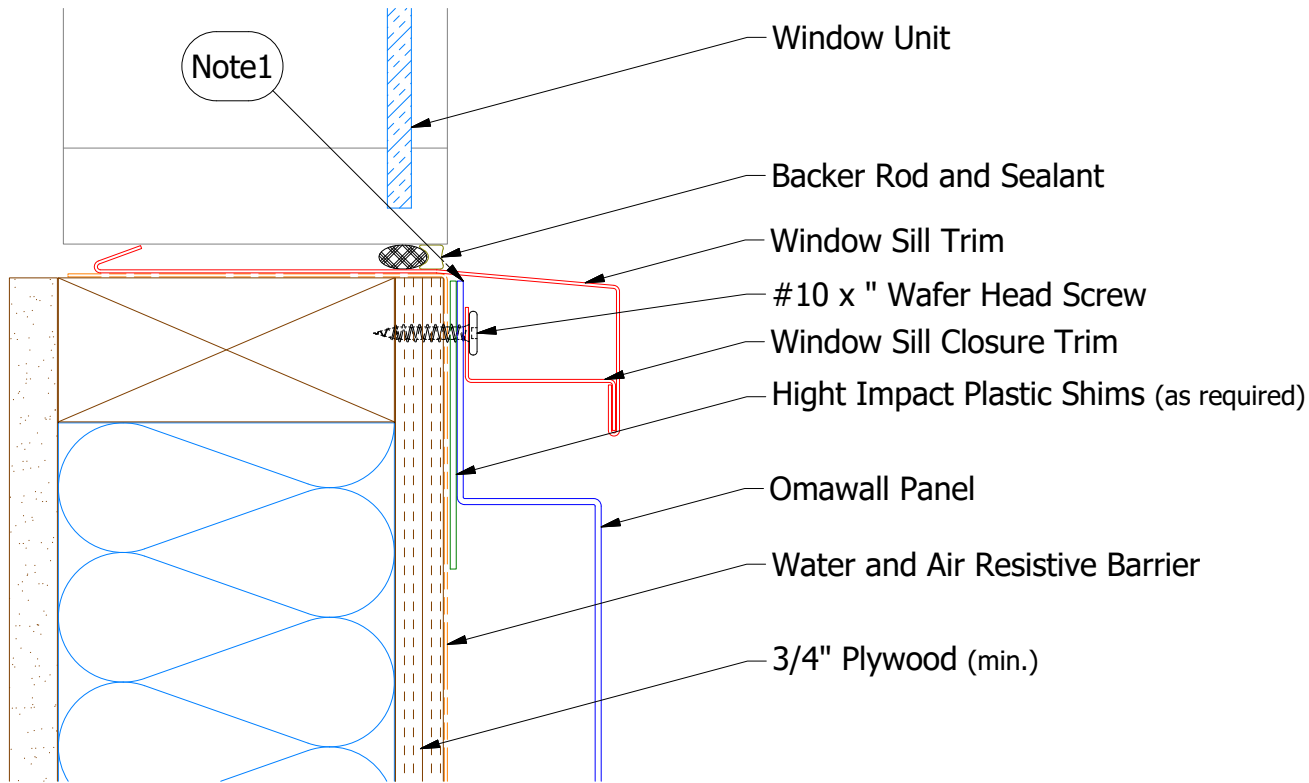
Support Z



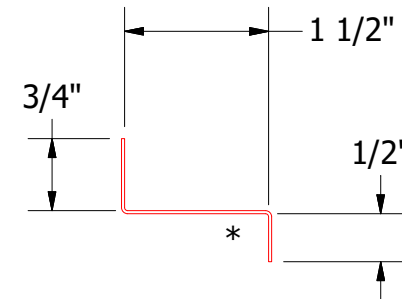
J Closure

Note: * denotes color side.
Note1: Cut Back Panel Edge.

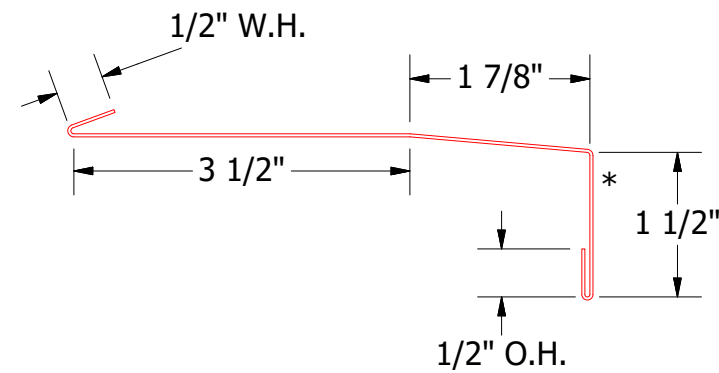
	ATAS INTERNATIONAL, INC	
	Allentown PA 610-395-8445 Mesa AZ 480-558-7210	
TITLE		Omawall Top of Wall Detail
DWG. NO.		DR KRK DATE 1/29/2021
MATERIAL		APP DATE
REV. NO.	DATE	DESCRIPTION OF REVISION
01	10/8/2021	Added VHB Tape
BY	KRK	APP
SH. SIZE	B	SCALE X:X



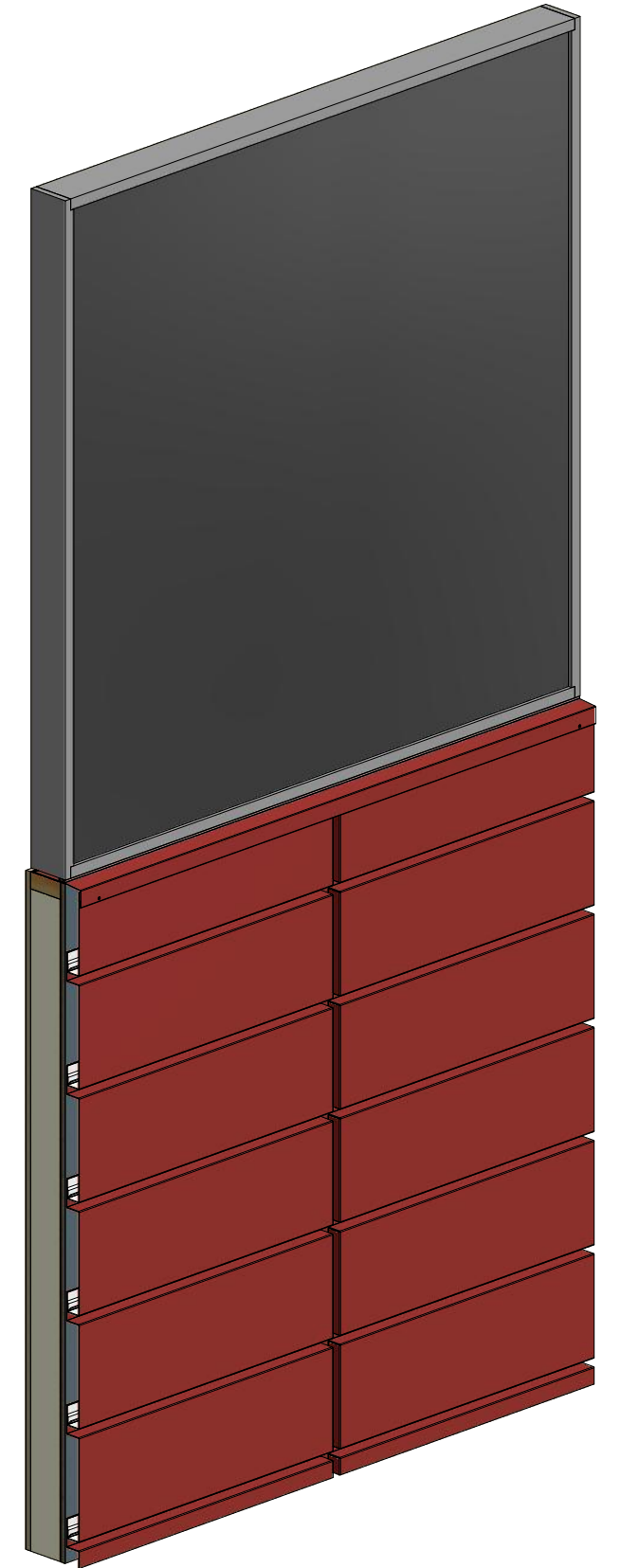
Support Z



Window Sill Closure Trim



Window Sill Trim



Note: * denotes color side.
Note1: Cut Back Panel Edge.

				TITLE	
				Omawall Window Sill Detail	
REV. NO.		DATE	DESCRIPTION OF REVISION	BY	APP
01		10/8/2021	Added VHB Tape	KRK	
				DR	DATE
				KRK	1/29/2021
				APP	DATE
				SH. SIZE	SCALE
				B	X:X

 ATAS INTERNATIONAL, INC
Allentown PA
610-395-8445
Mesa AZ
480-558-7210