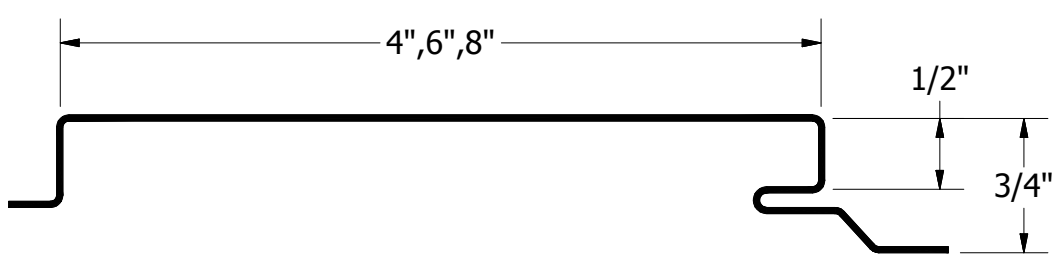
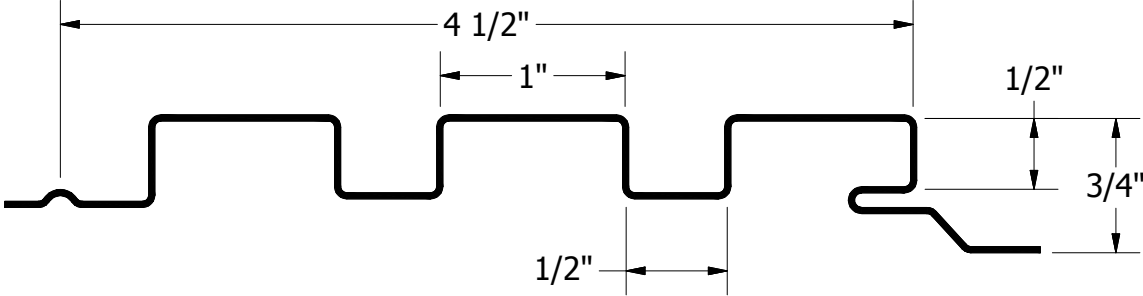


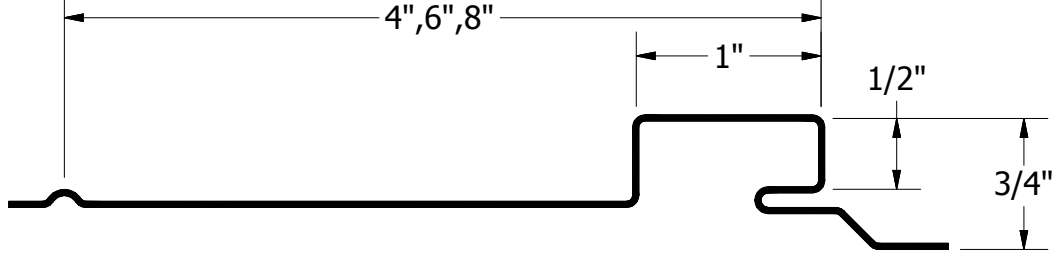
OPF



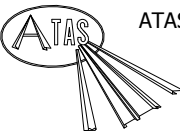
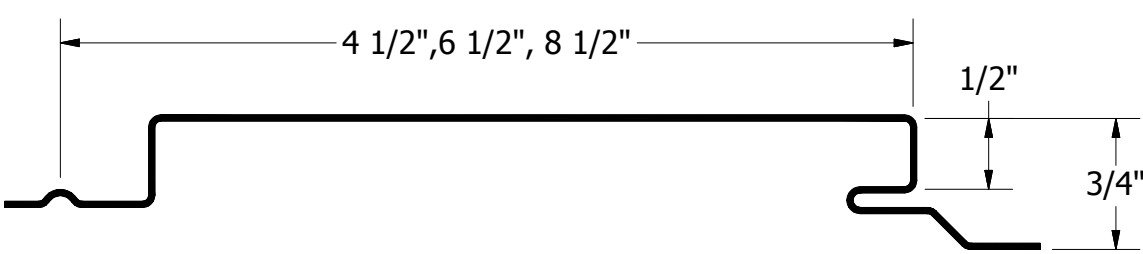
OPM



OPN



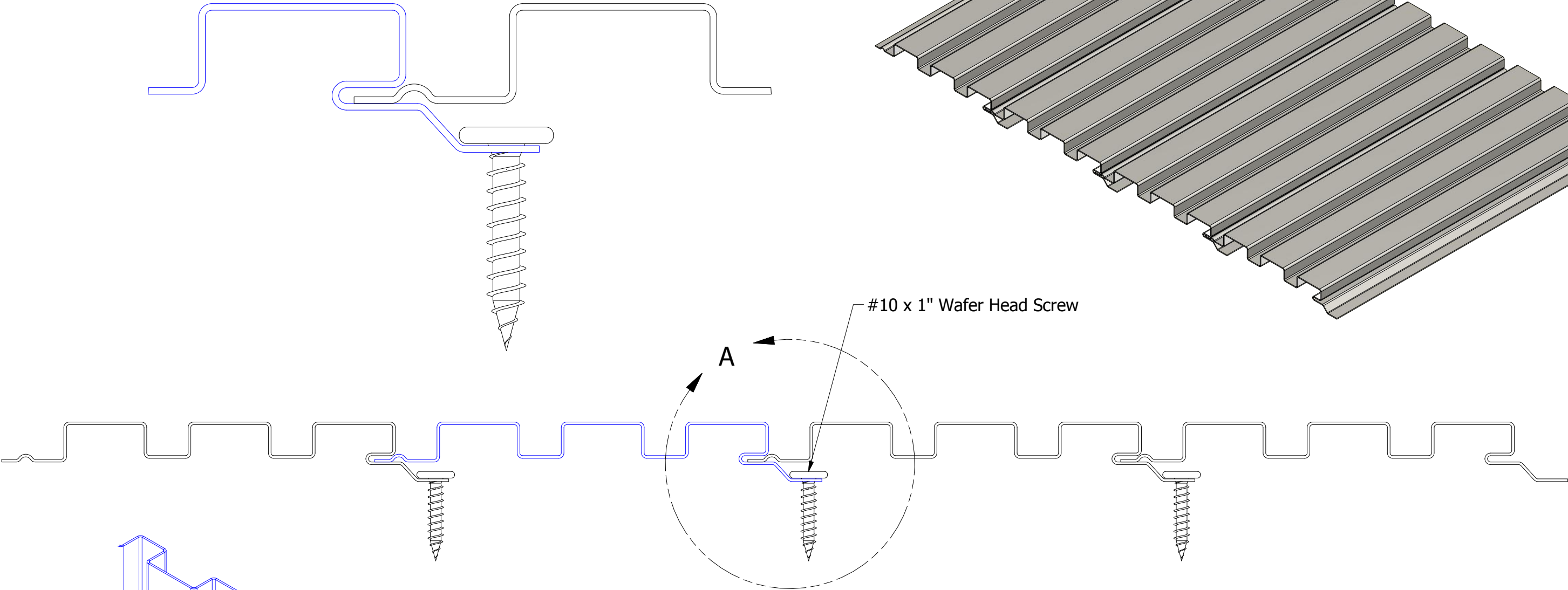
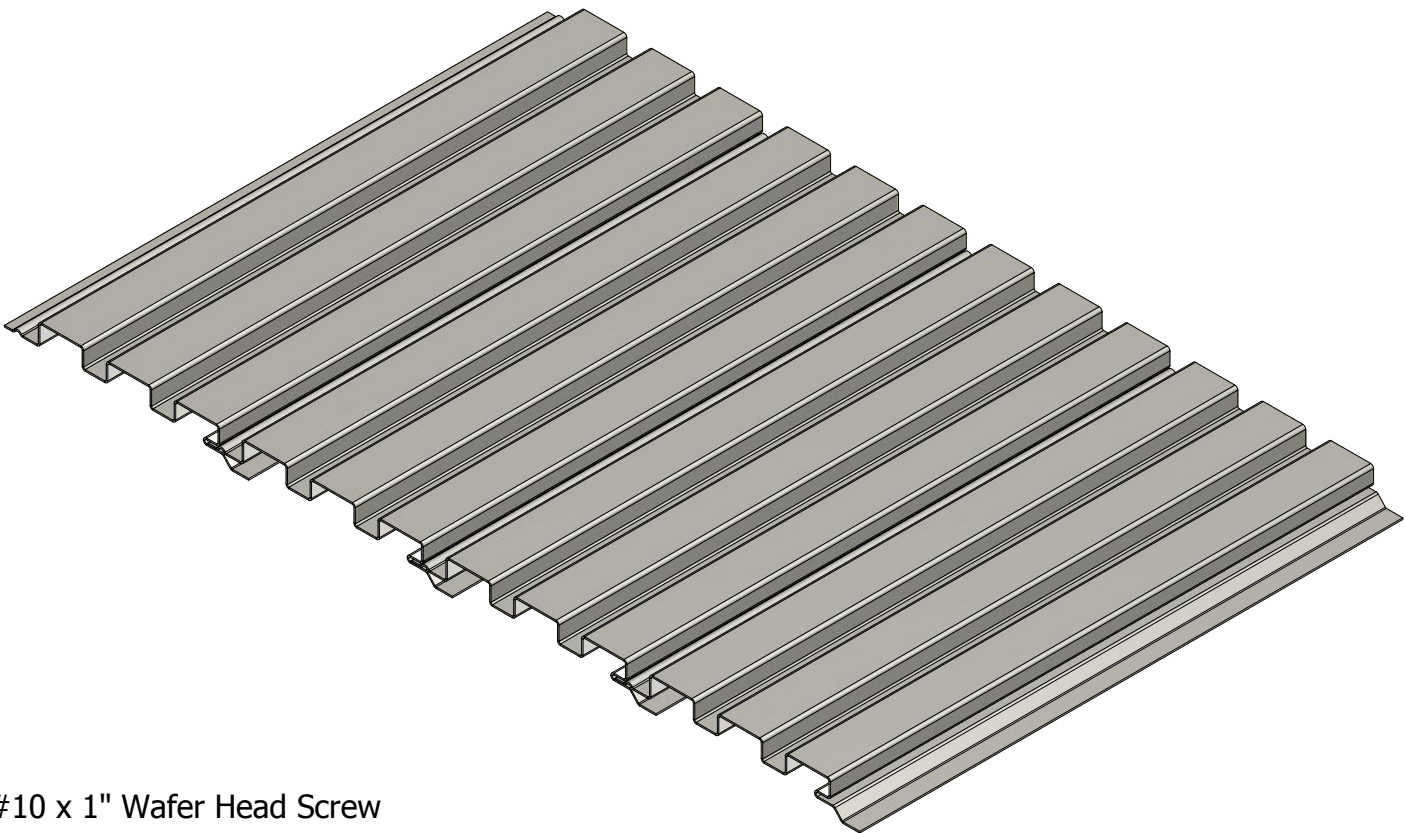
OPW



ATAS INTERNATIONAL, INC
Allentown PA
610-395-8445
Mesa AZ
480-558-7210

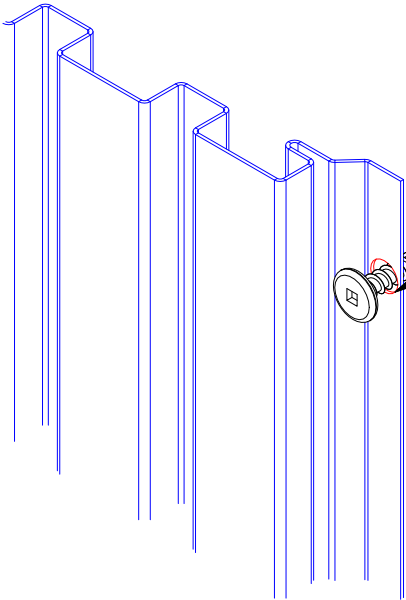
TITLE			Opaline Line Drawing Detail		
DWG. NO.			DR	KRK	DATE 4/16/2015
			APP	DAS	DATE 8/4/16
MATERIAL			SH. SIZE	B	SCALE X:X

REV. NO.	DATE	DESCRIPTION OF REVISION	BY	APP



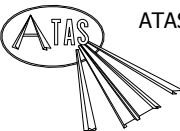
#10 x 1" Wafer Head Screw

A



Pre-Drilled Fastener Hole

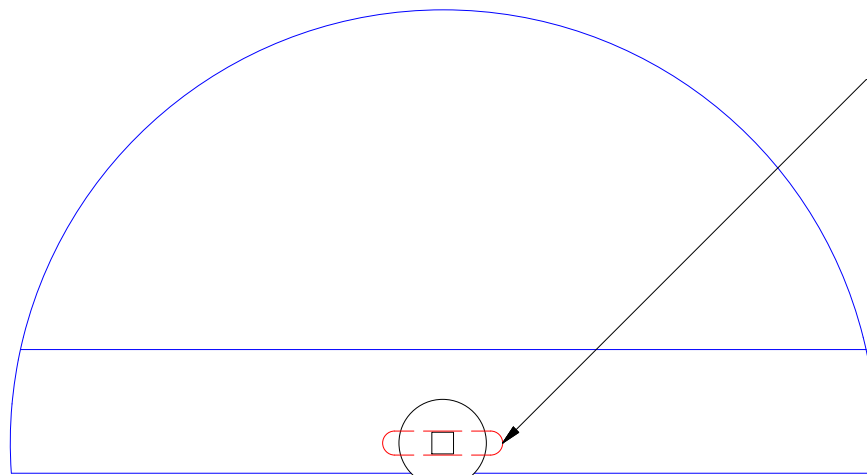
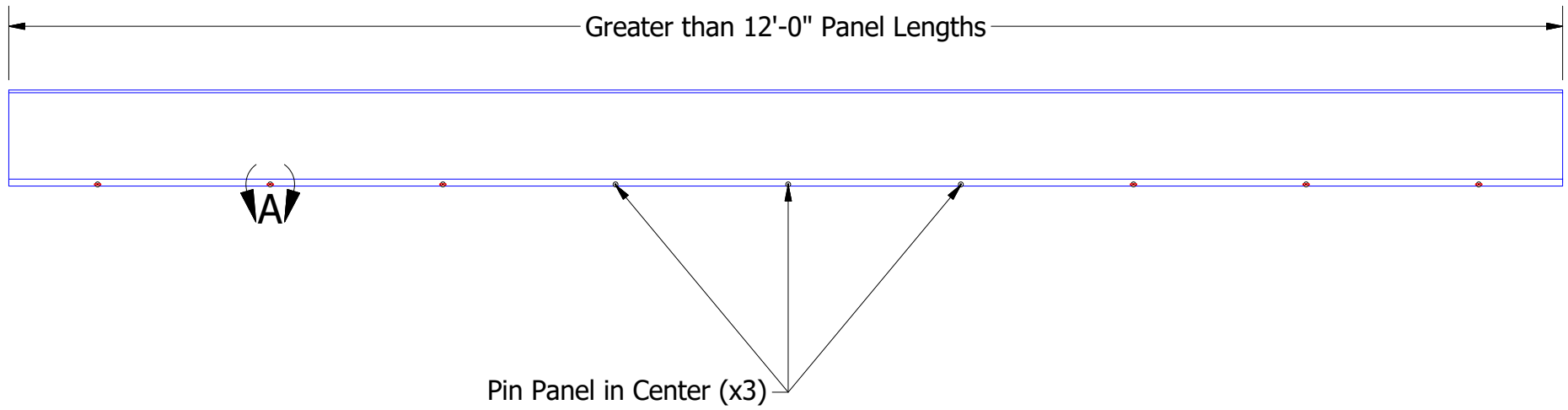
Pre-Drill Fastener Holes for Panels Greater than 20'-0" in Length



ATAS INTERNATIONAL, INC
Allentown PA
610-395-8445
Mesa AZ
480-558-7210

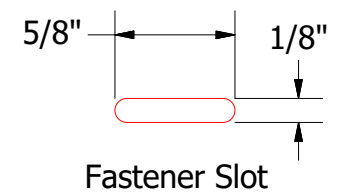
TITLE			Opaline Panel Installation Detail		
DWG. NO.		DR		DATE	
		DMR		10/18/2016	
		APP		DATE	
MATERIAL		SH. SIZE		SCALE	
		B		X:X	

REV. NO.	DATE	DESCRIPTION OF REVISION	BY	APP



DETAIL A

Field Pre-Punch Fastener Slots to allow for Panel Expansion and Contraction.



Secure Fastener in Center of the Slot

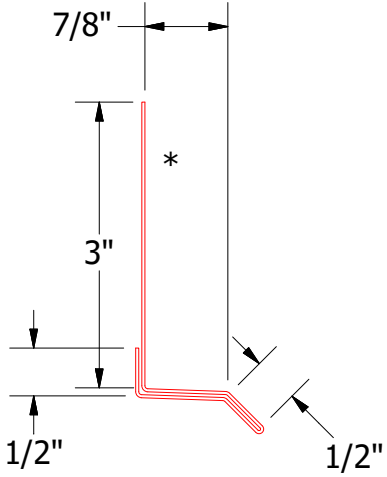
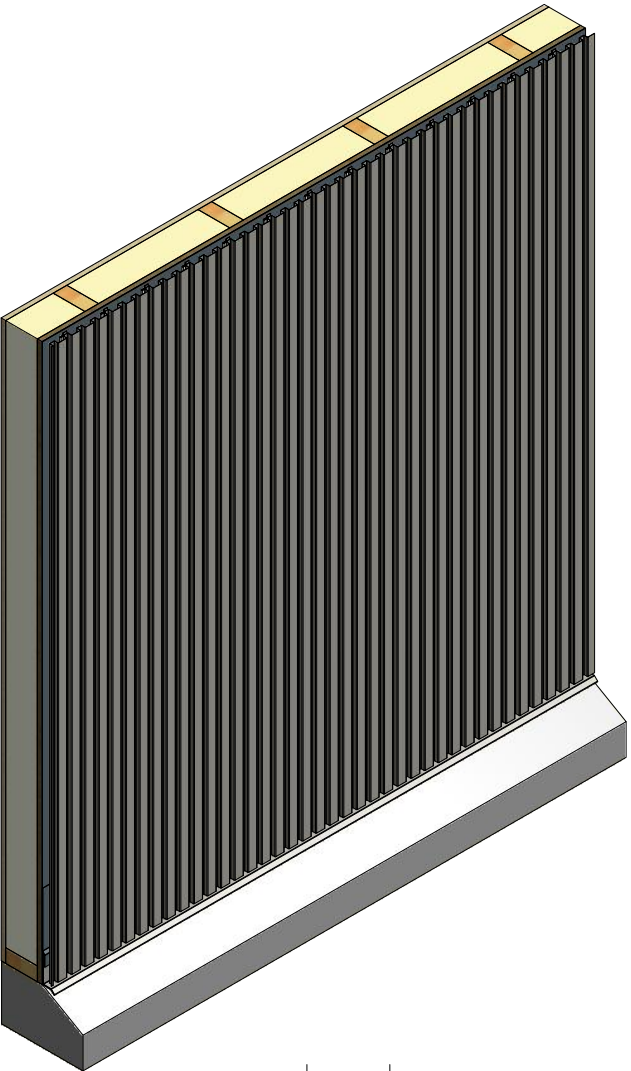
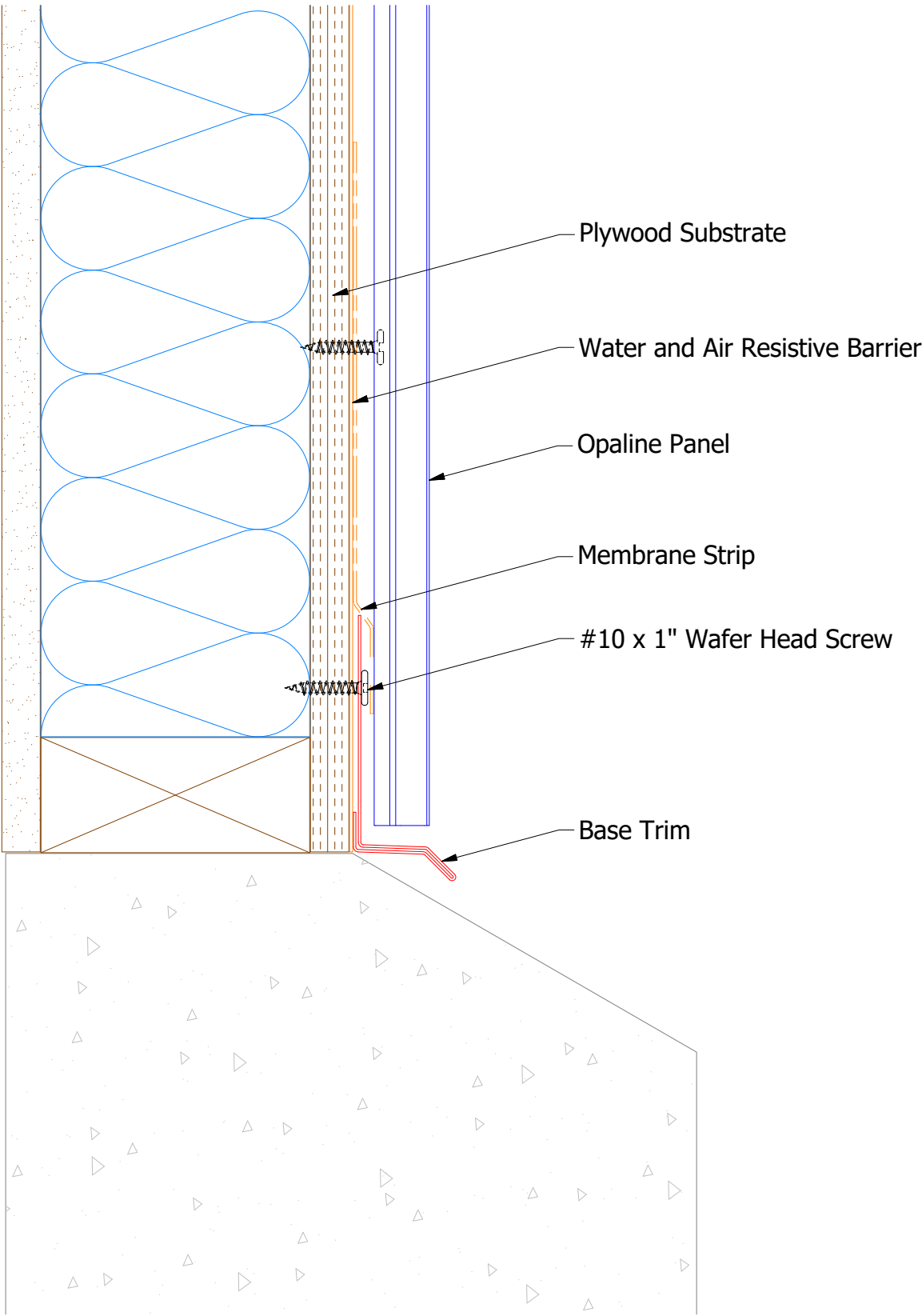


ATAS INTERNATIONAL, INC
Allentown PA
610-395-8445
Mesa AZ
480-558-7210

TITLE			Opaline Fastener Slots Detail	
DWG. NO.			DR	DATE
			DMR	5/13/2021
MATERIAL			APP	DATE
			SH. SIZE	SCALE
			A	X:X

REV. NO.	DATE	DESCRIPTION OF REVISION	BY	APP

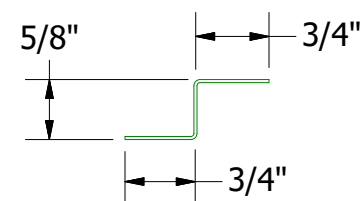
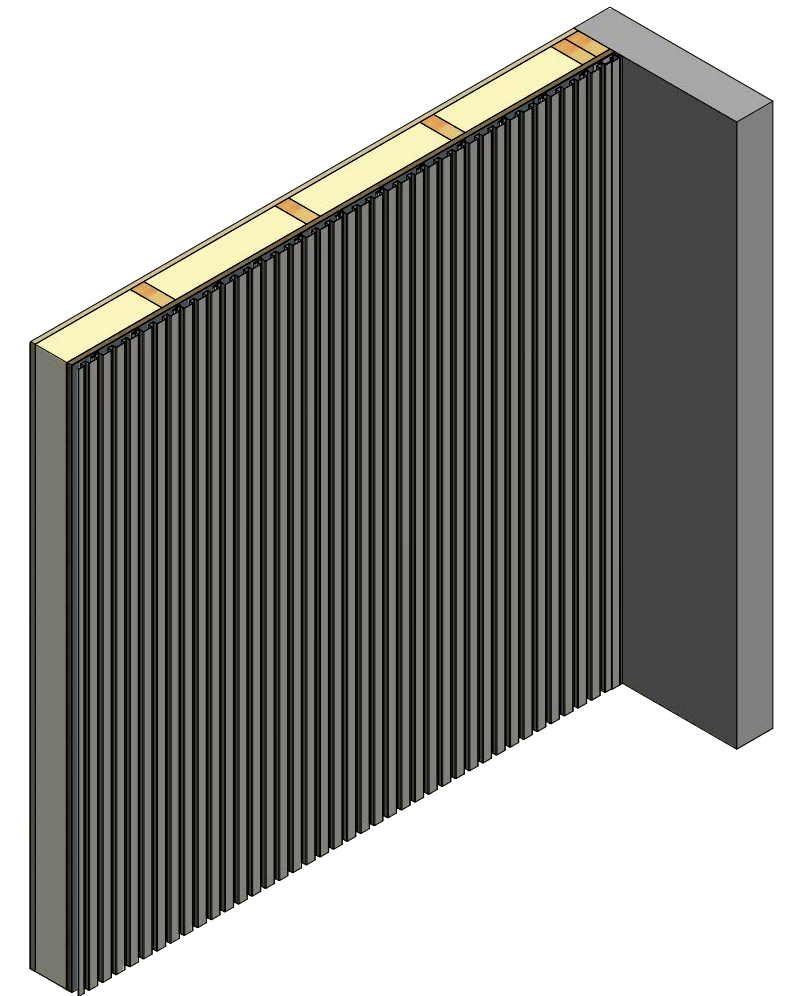
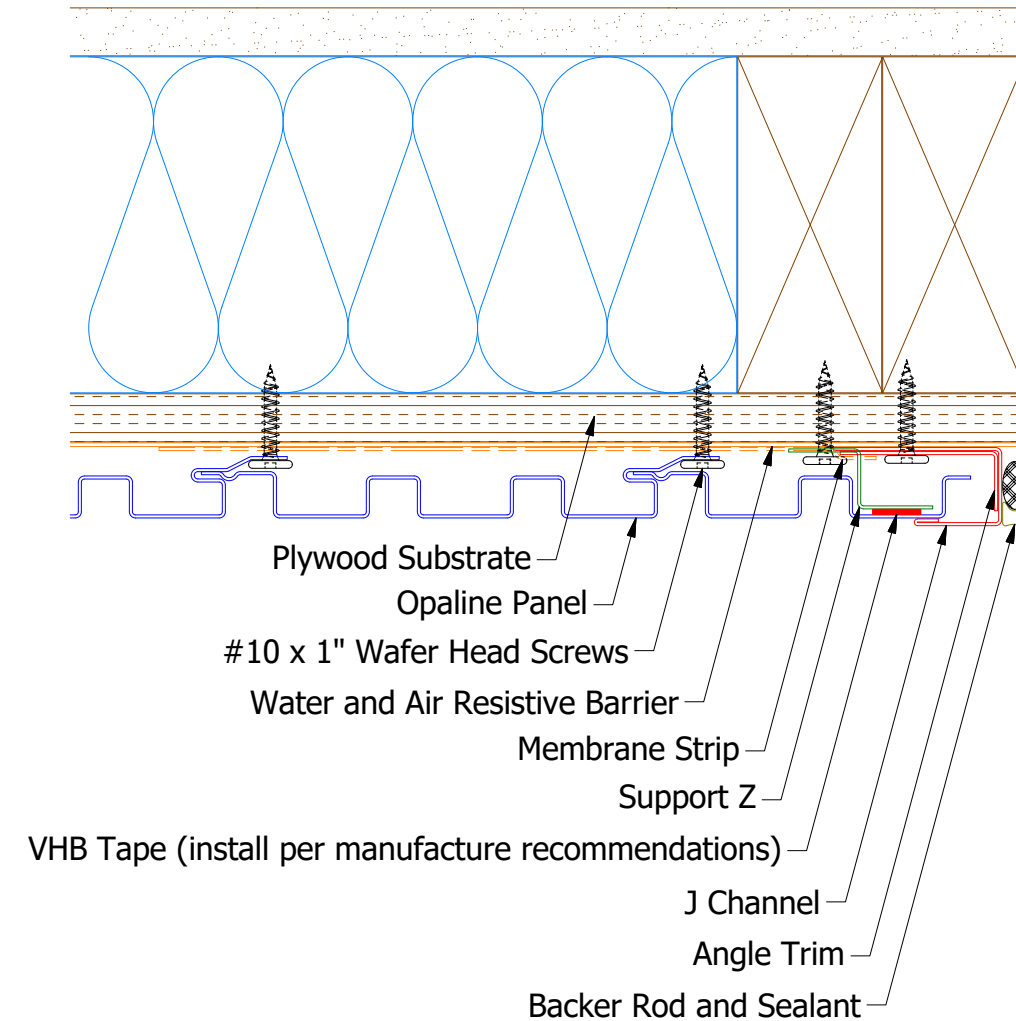
Vertical Panel



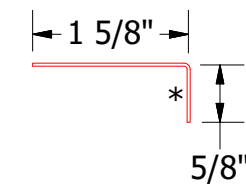
OPA661 - Base Trim

Note: * denotes color side.

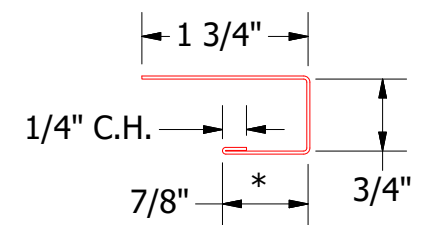
Vertical Panel




OPA681 - Support Z



OPA680 - Angle Trim



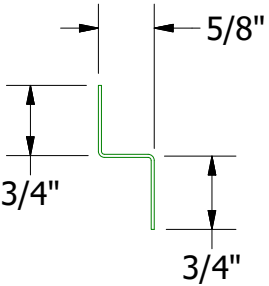
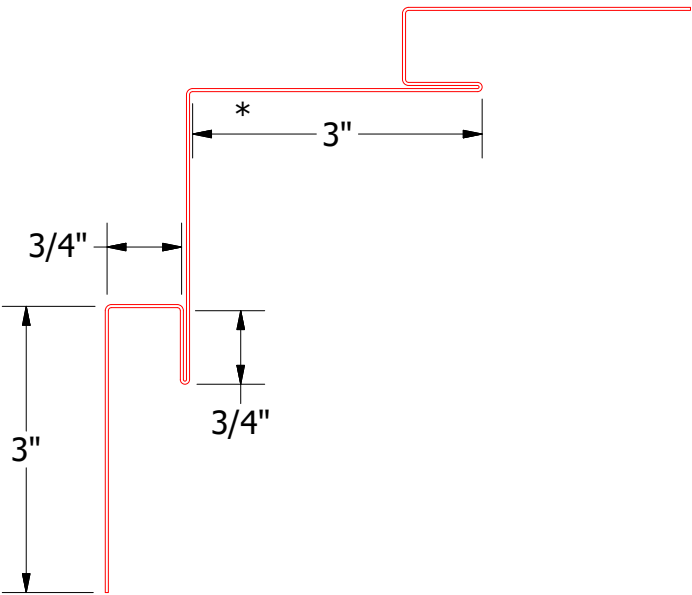
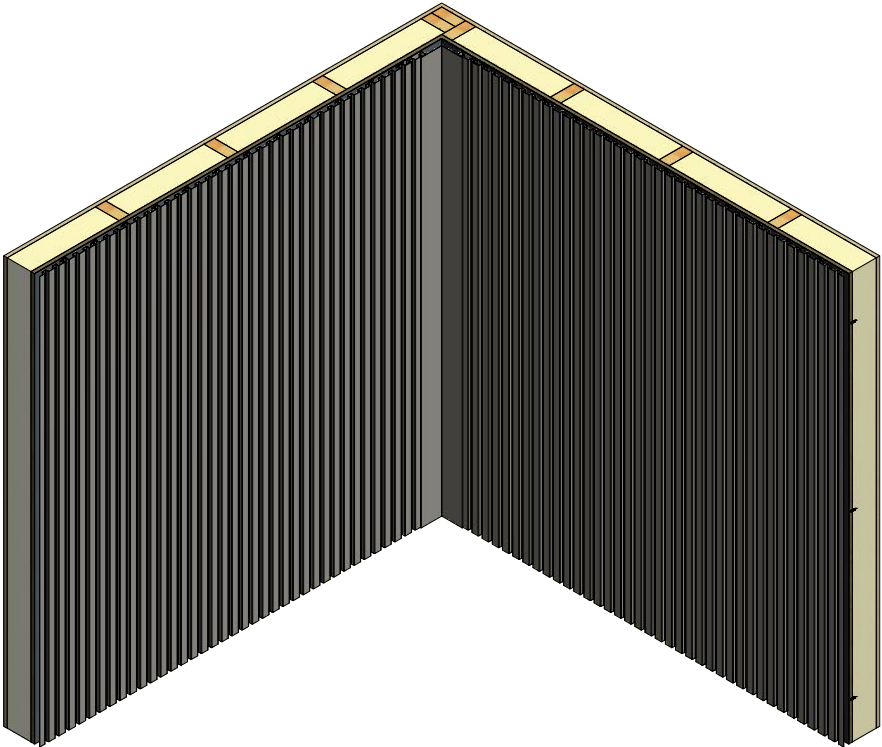
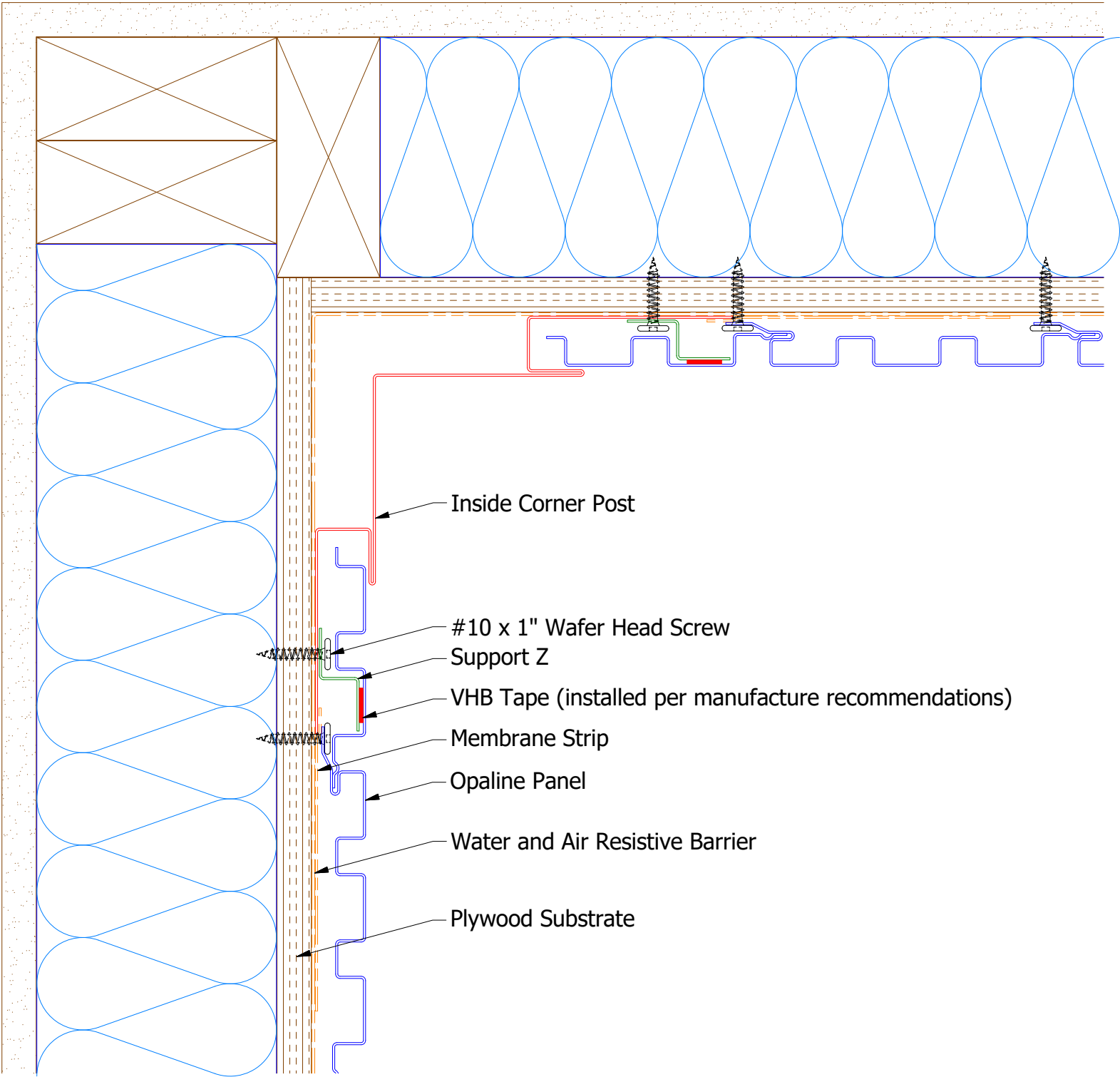
OPA034 - J Channel

		ATAS INTERNATIONAL, INC			
		Allentown PA 610-395-8445 Mesa AZ 480-558-7210			
TITLE					
Opaline Endwall Detail					
DWG. NO.		DR	MBP	DATE	7/6/2016
MATERIAL		APP	DAS	DATE	7/28/16
APP		SH. SIZE	B	SCALE	X:X

Note: * denotes color side.

Note: Stainless Steel Pop Rivets maybe needed along with VHB Tape for longer Panels.

Vertical Panel



OPA601 - Inside Corner Post

OPA681 - Support Z

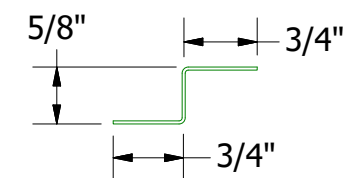
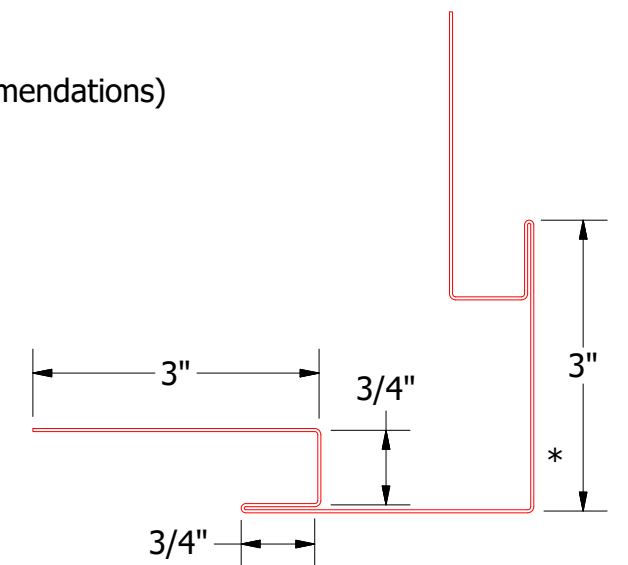
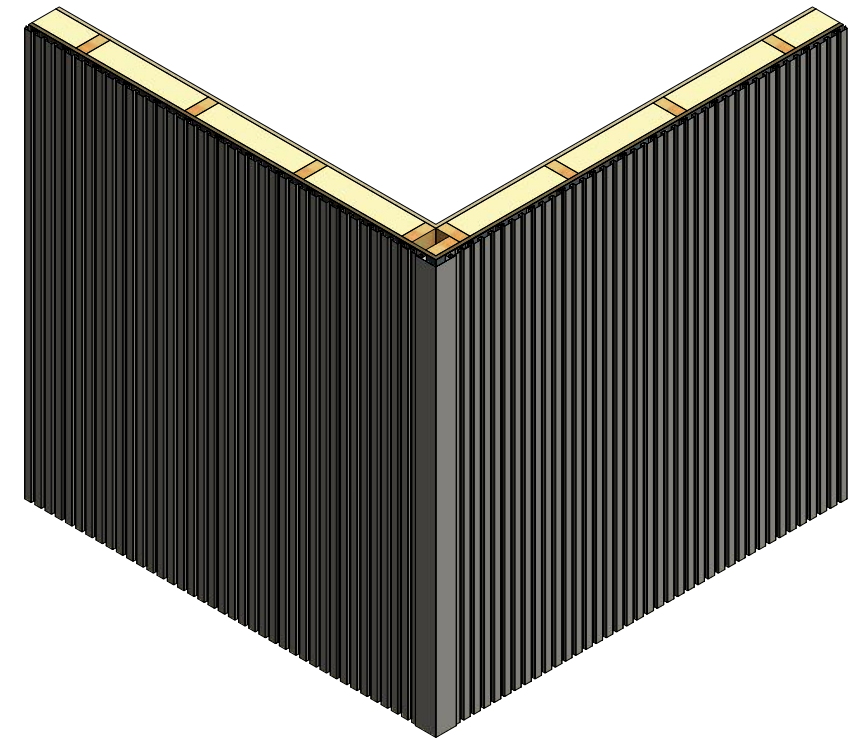
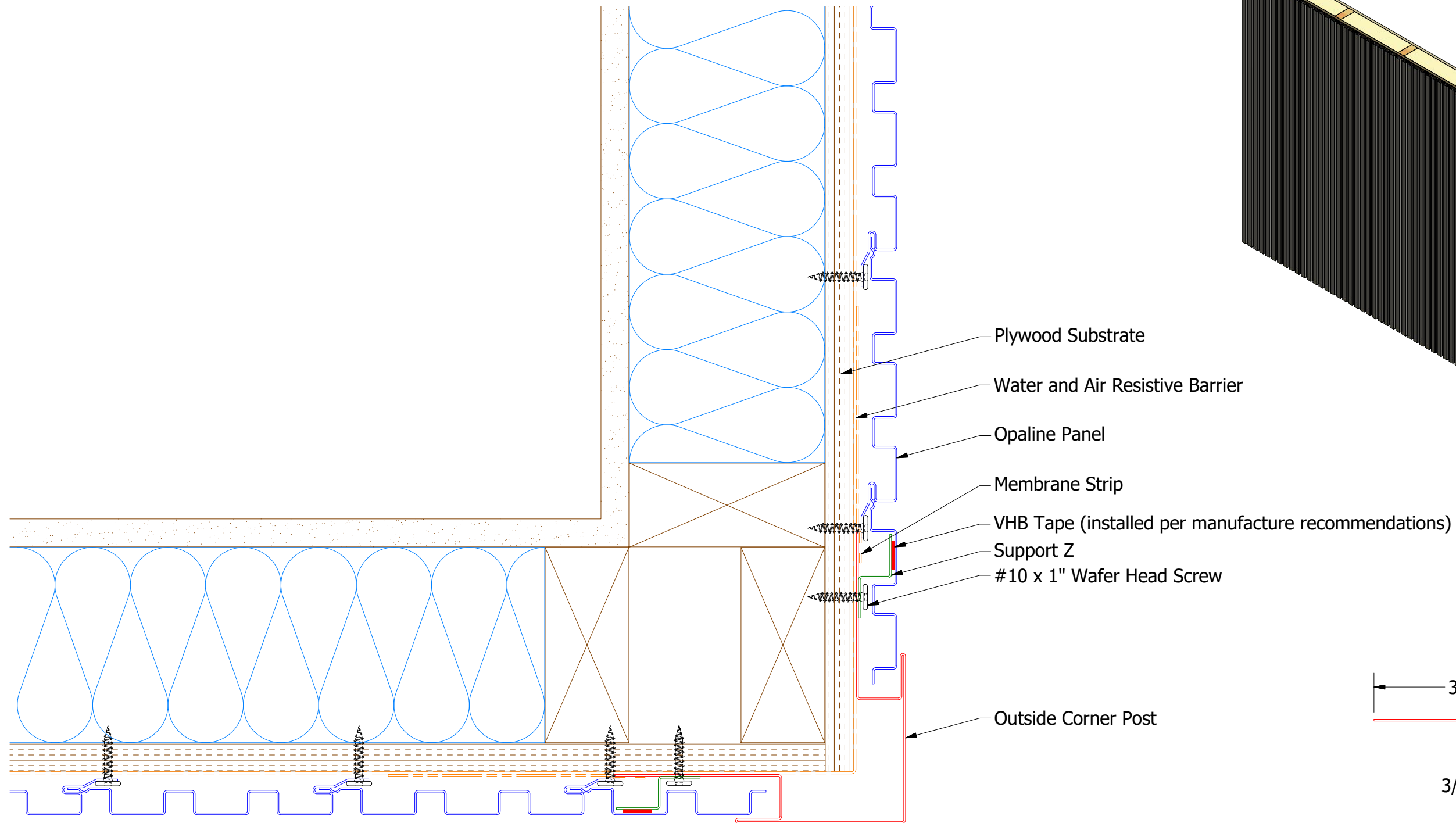
Note: * denotes color side.
Note: stainless steel pop rivets maybe needed along with VHB tape for longer panels.

				TITLE Opaline Inside Corner Detail			
				DWG. NO.	DR MBP	DATE	7/6/2016
				MATERIAL	APP DAS	DATE	7/28/16
01	8/30/2021	Changed Pop Rivets to VHB Tape	KRK	SH. SIZE	B	SCALE	X:X
REV. NO.	DATE	DESCRIPTION OF REVISION	BY APP				



ATAS INTERNATIONAL, INC
Allentown PA
610-395-8445
Mesa AZ
480-558-7210

Vertical Panel



OPA602 - Outside Corner Post



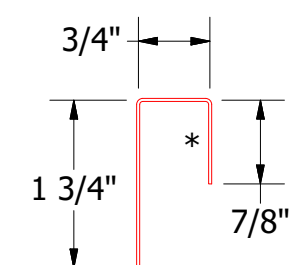
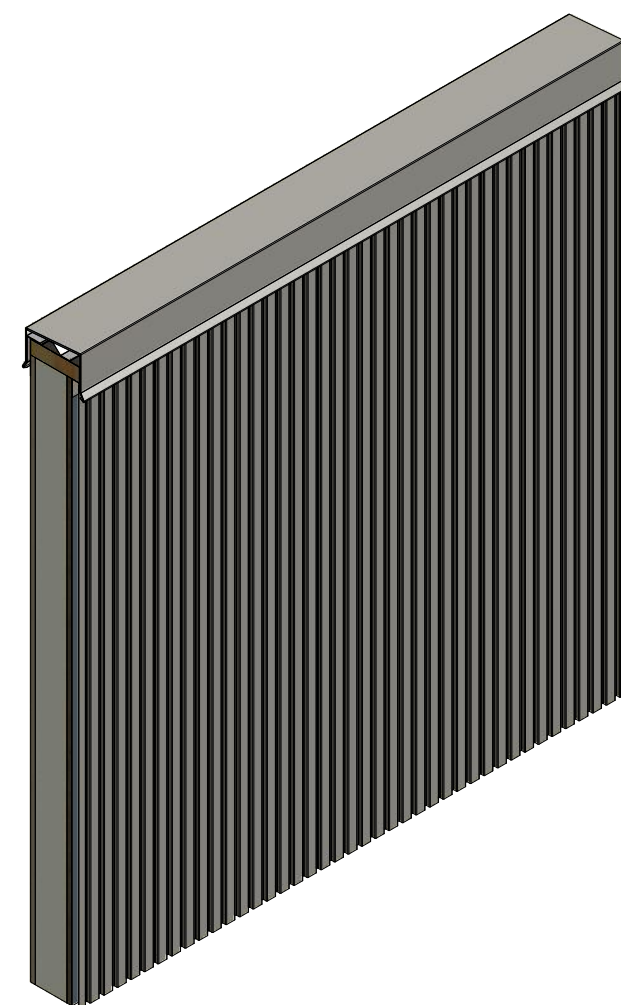
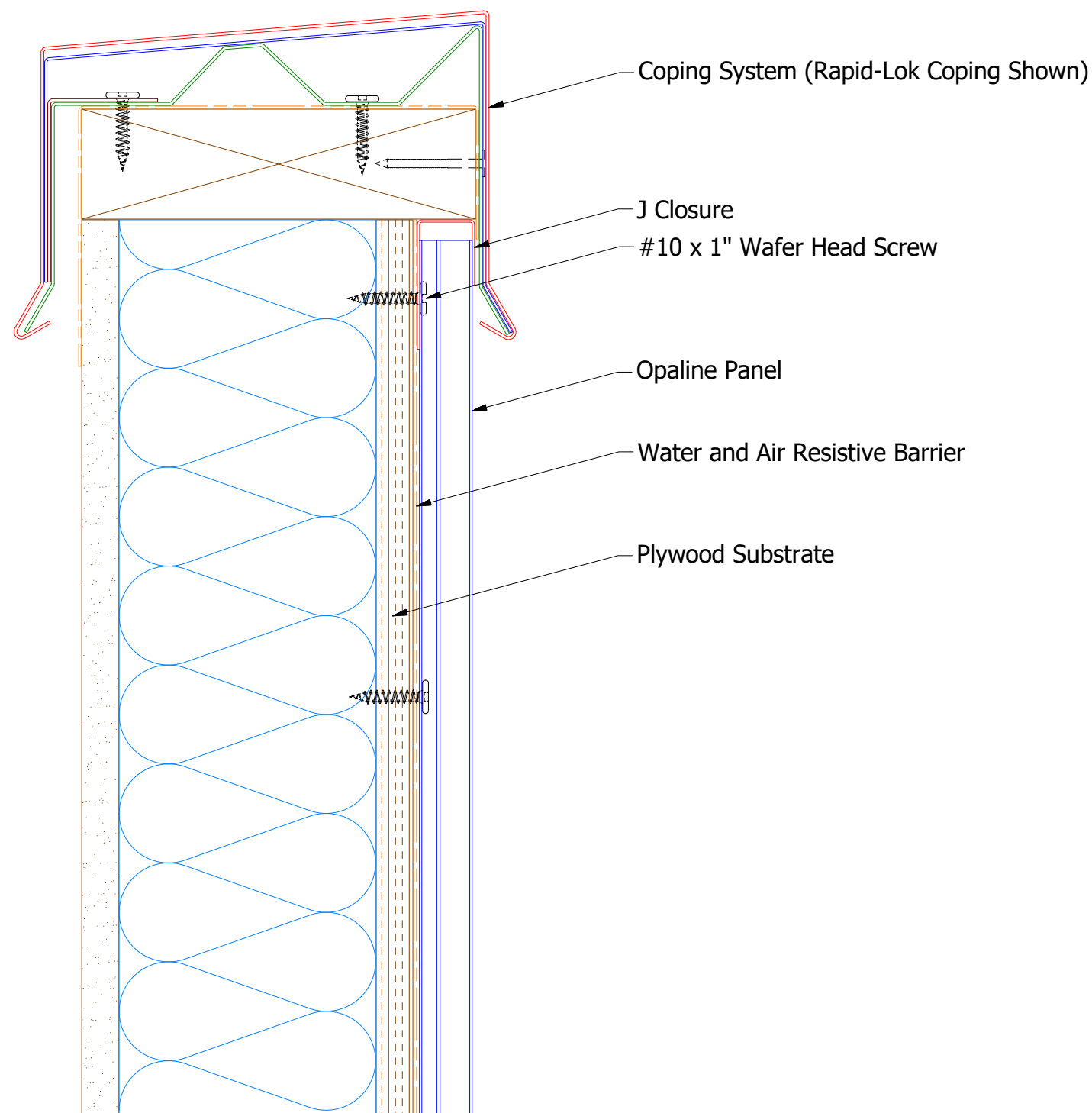
OPA681 - Support Z

					TITLE						
					Opaline Outside Corner Detail						
					DWG. NO.			DR	MBP	DATE	7/6/2016
018/31/2021Changed Pop Rivets to VHB TapeKRK					MATERIAL			APP	DAS	DATE	7/28/16
REV. NO.	DATE	DESCRIPTION OF REVISION						BY	APP	SH. SIZE	B

Note: * denotes color side.

Note: stainless steel pop rivets maybe needed along with VHB tape for longer panels.

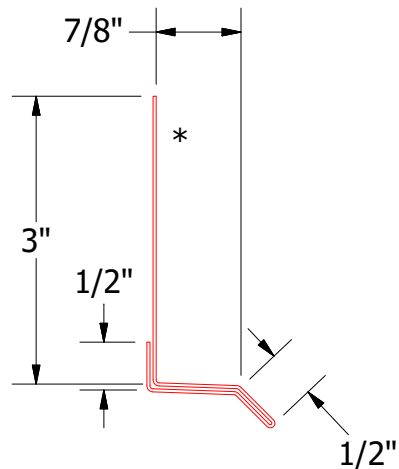
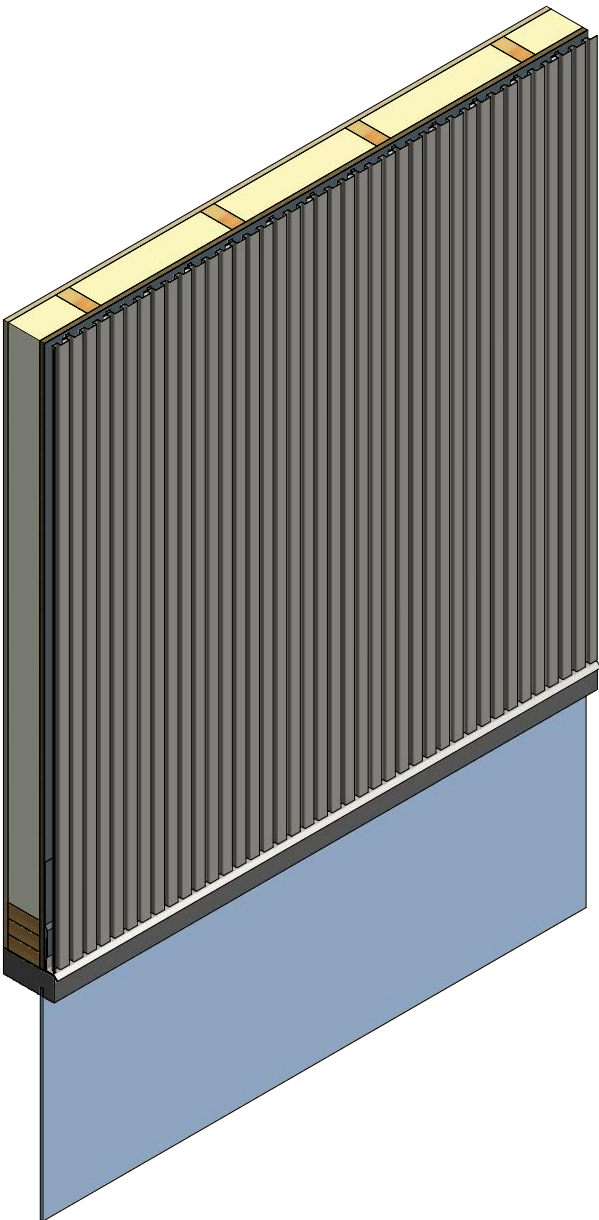
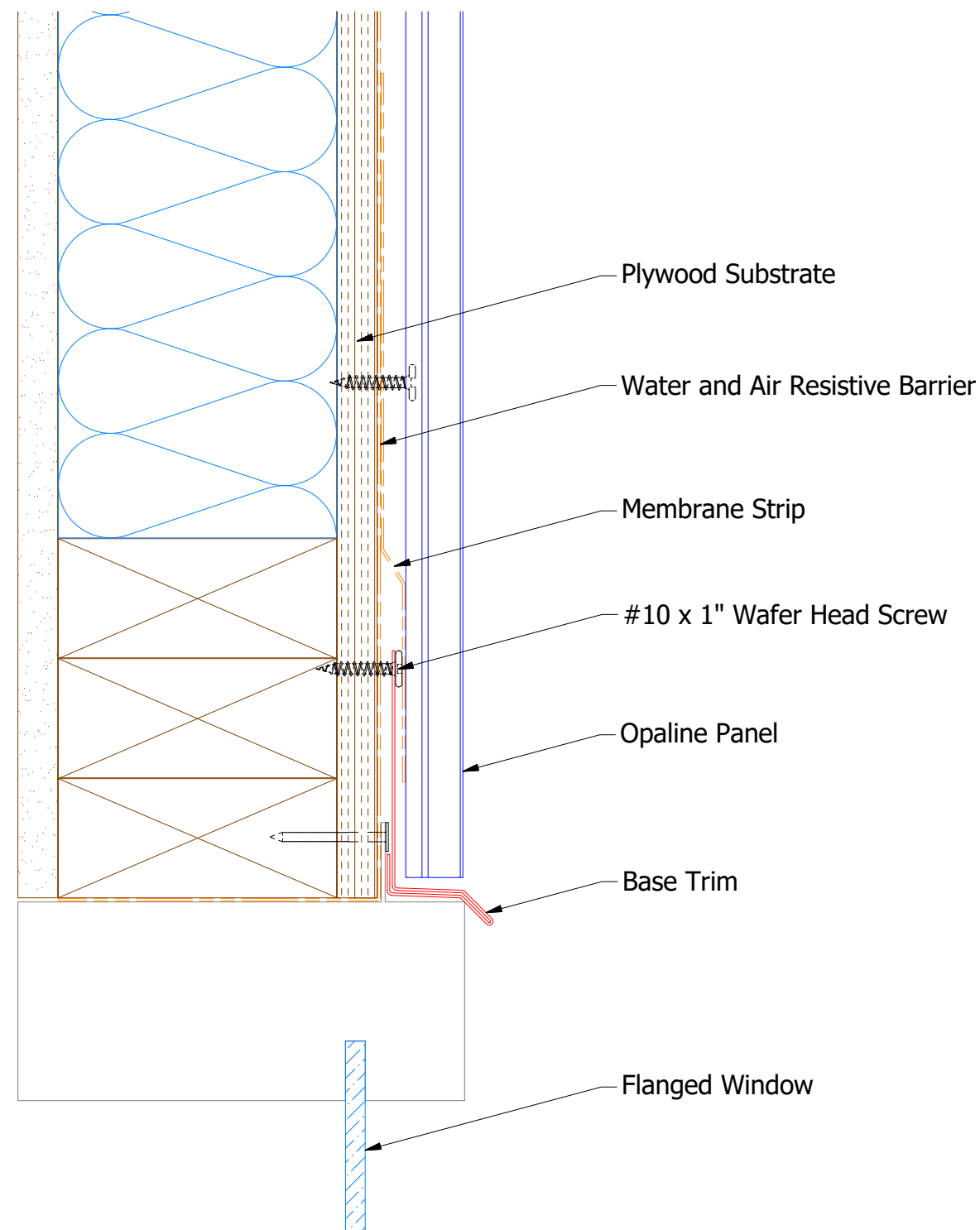
Vertical Panel



OPA270 - J Closure

Note: * denotes color side.

Vertical Panel

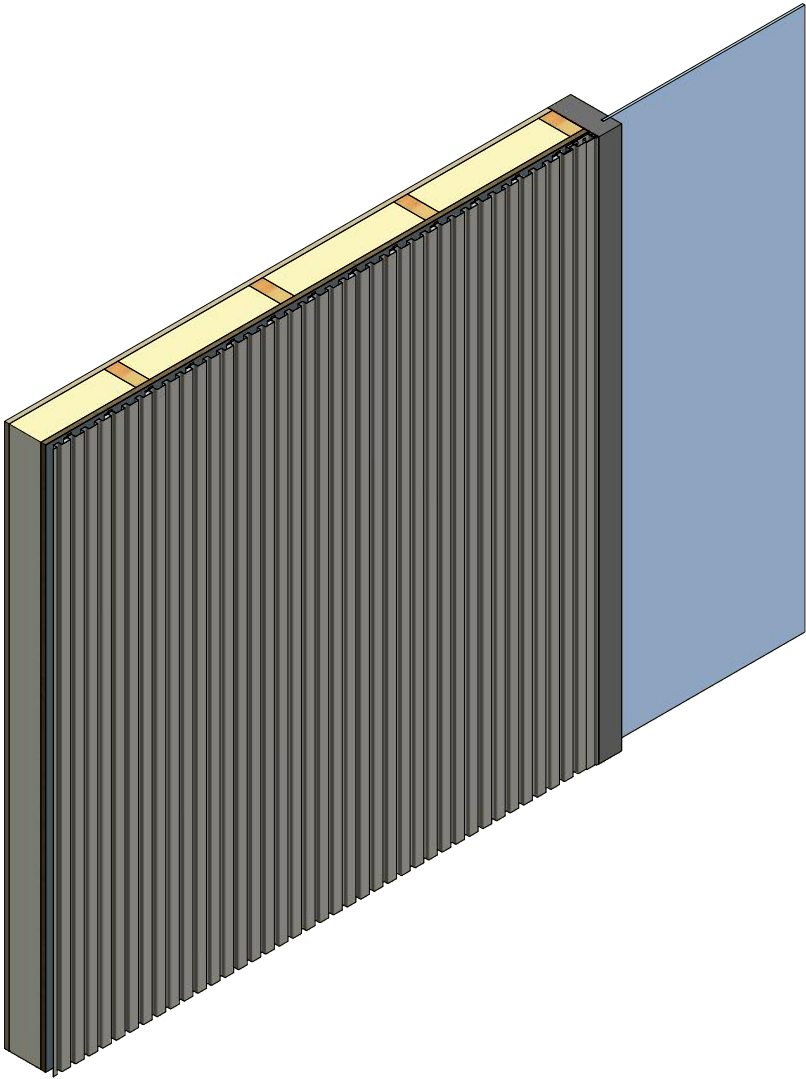
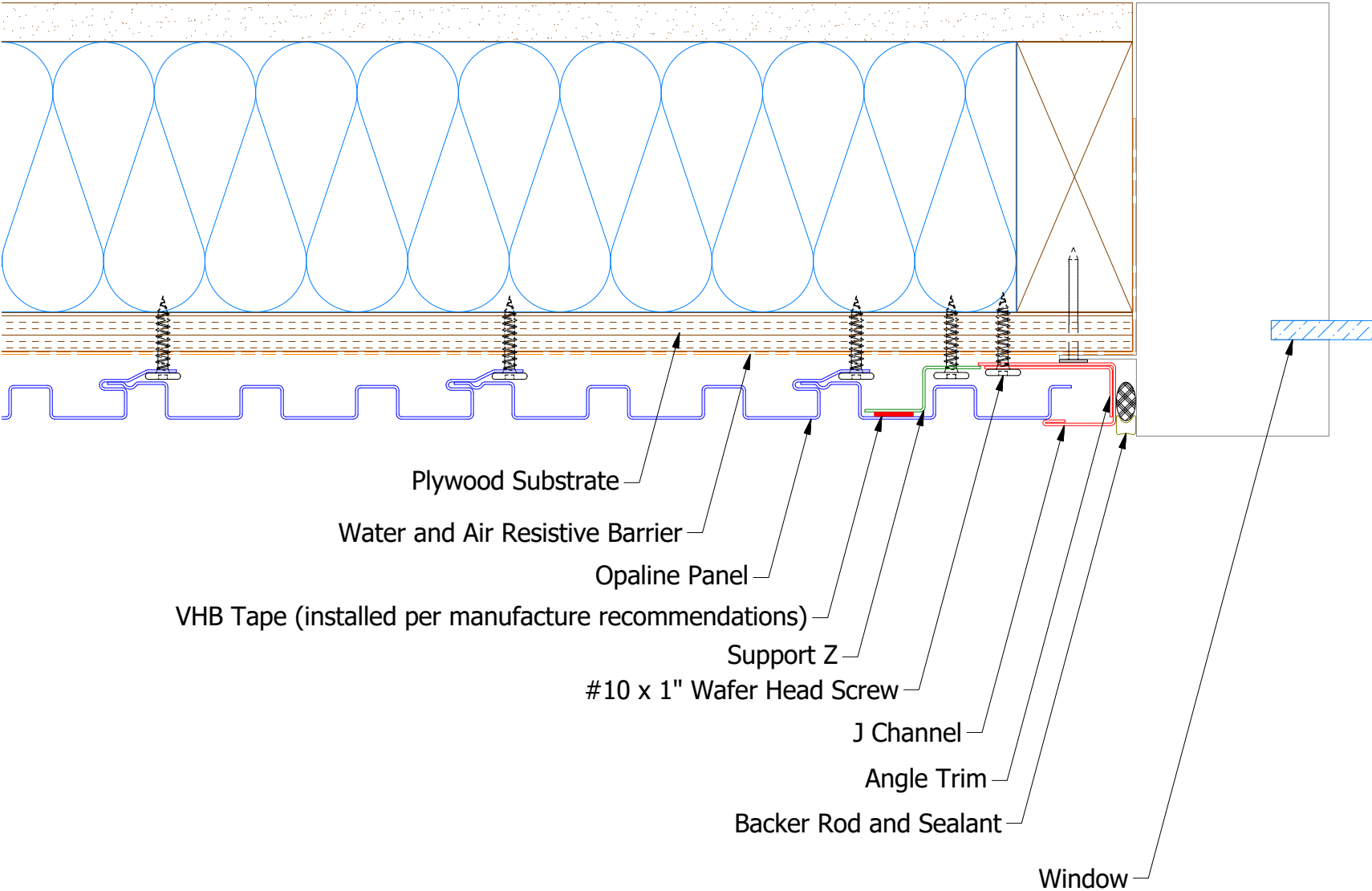


OPA661 - Base Trim

Note: * denotes color side.

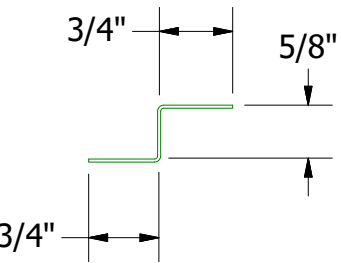
				ATAS INTERNATIONAL, INC	
				Allentown PA	
				610-395-8445	
				Mesa AZ	
				480-558-7210	
				TITLE	
				Opaline Head Window Flange Detail	
REV. NO.		DATE		DWG. NO.	
				DR MBP	
				DATE	
				APP	
				DATE	
				MATERIAL	
				SH. SIZE B	
				SCALE X:X	

Vertical Panel

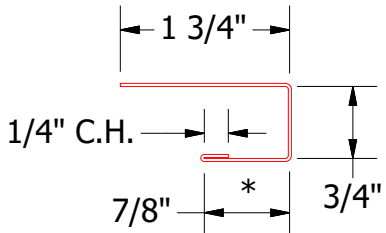
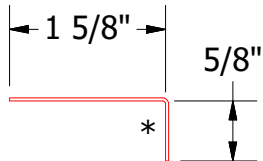


Note: * denotes color side.
Note: stainless steel pop rivets maybe needed along with VHB tape for longer panels.


OPA681 - Support Z



OPA680 - Angle Trim

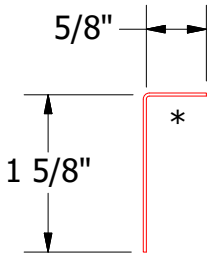
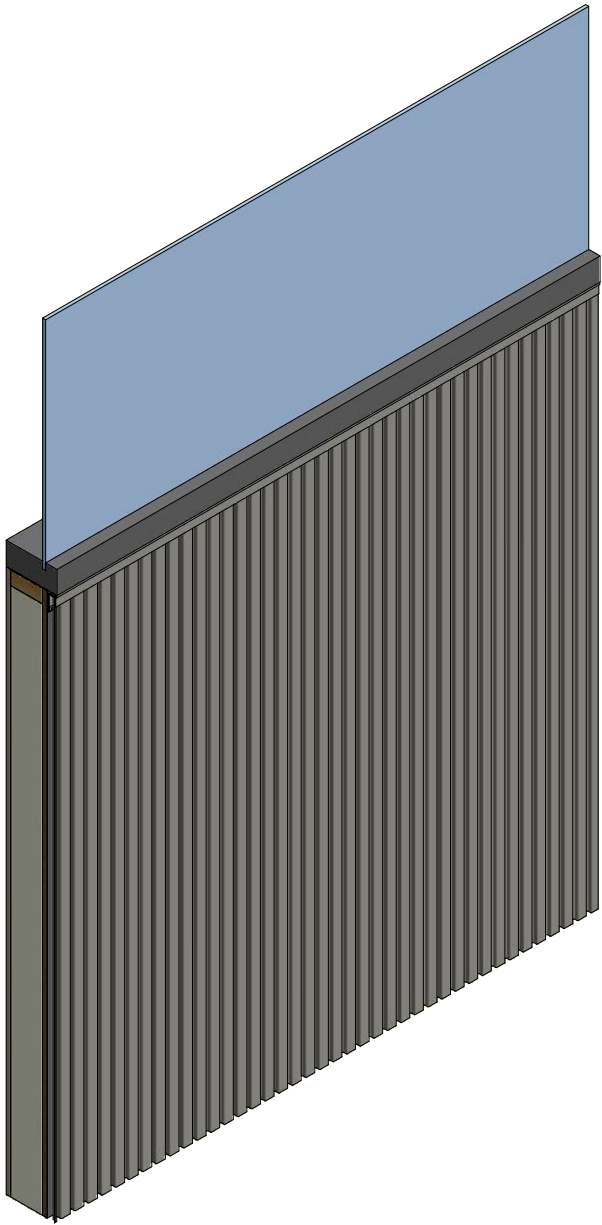
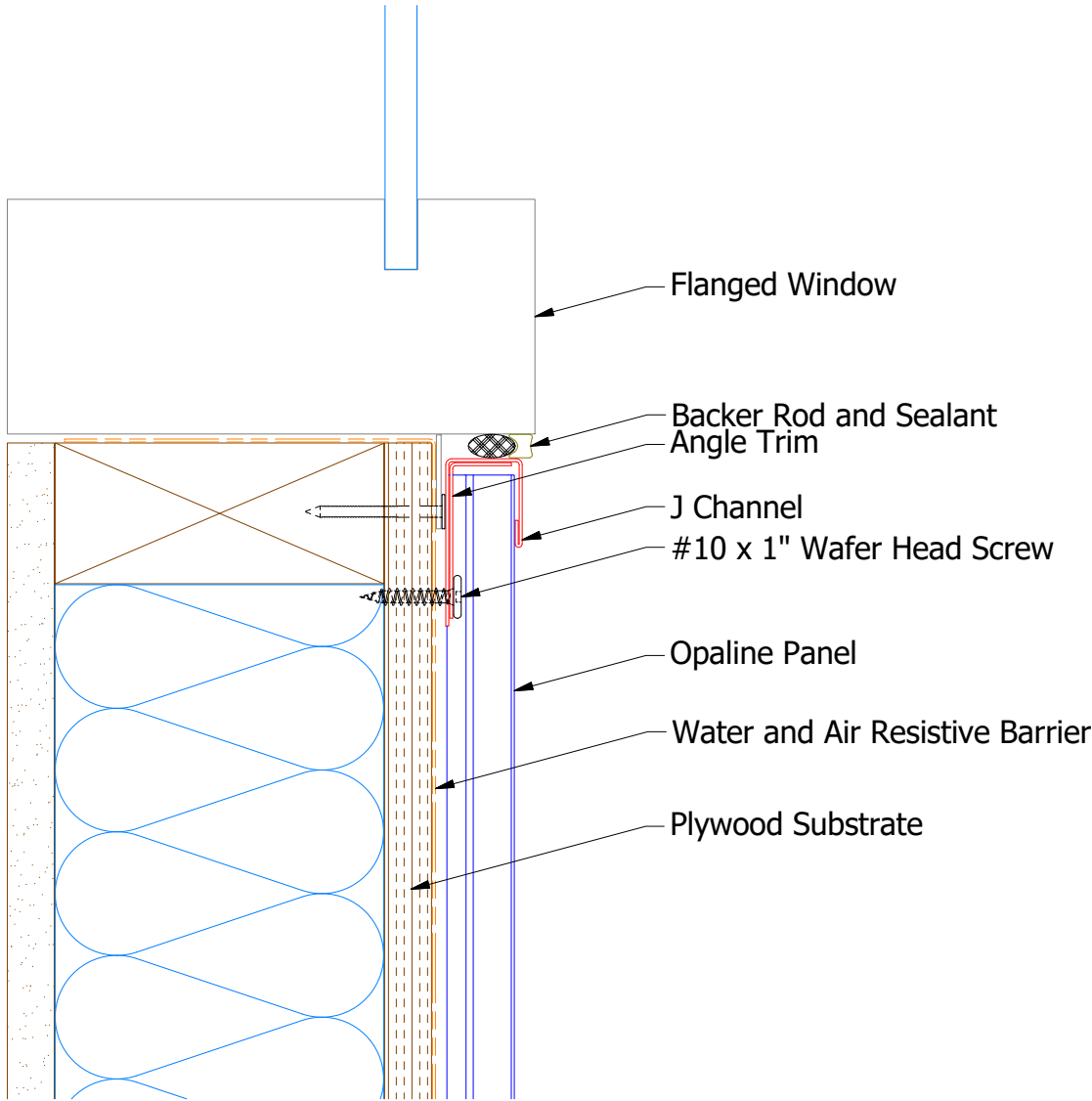


OPA034 - J Channel

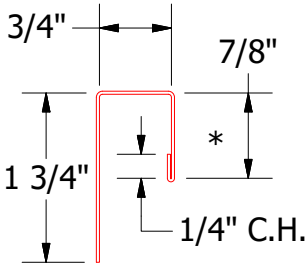
 ATAS INTERNATIONAL, INC Allentown PA 610-395-8445 Mesa AZ 480-558-7210			
TITLE Opaline Jamb Window Flange Detail			
DWG. NO.		DR	DATE
		MBP	7/31/2018
MATERIAL		APP	DATE
		SH. SIZE	SCALE
		B	X:X

REV. NO.	DATE	DESCRIPTION OF REVISION	BY	APP

Vertical Panel



OPA680 - Angle Trim

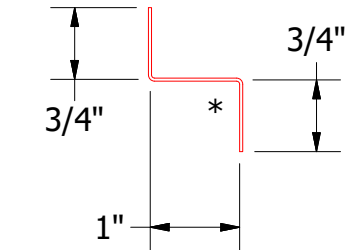
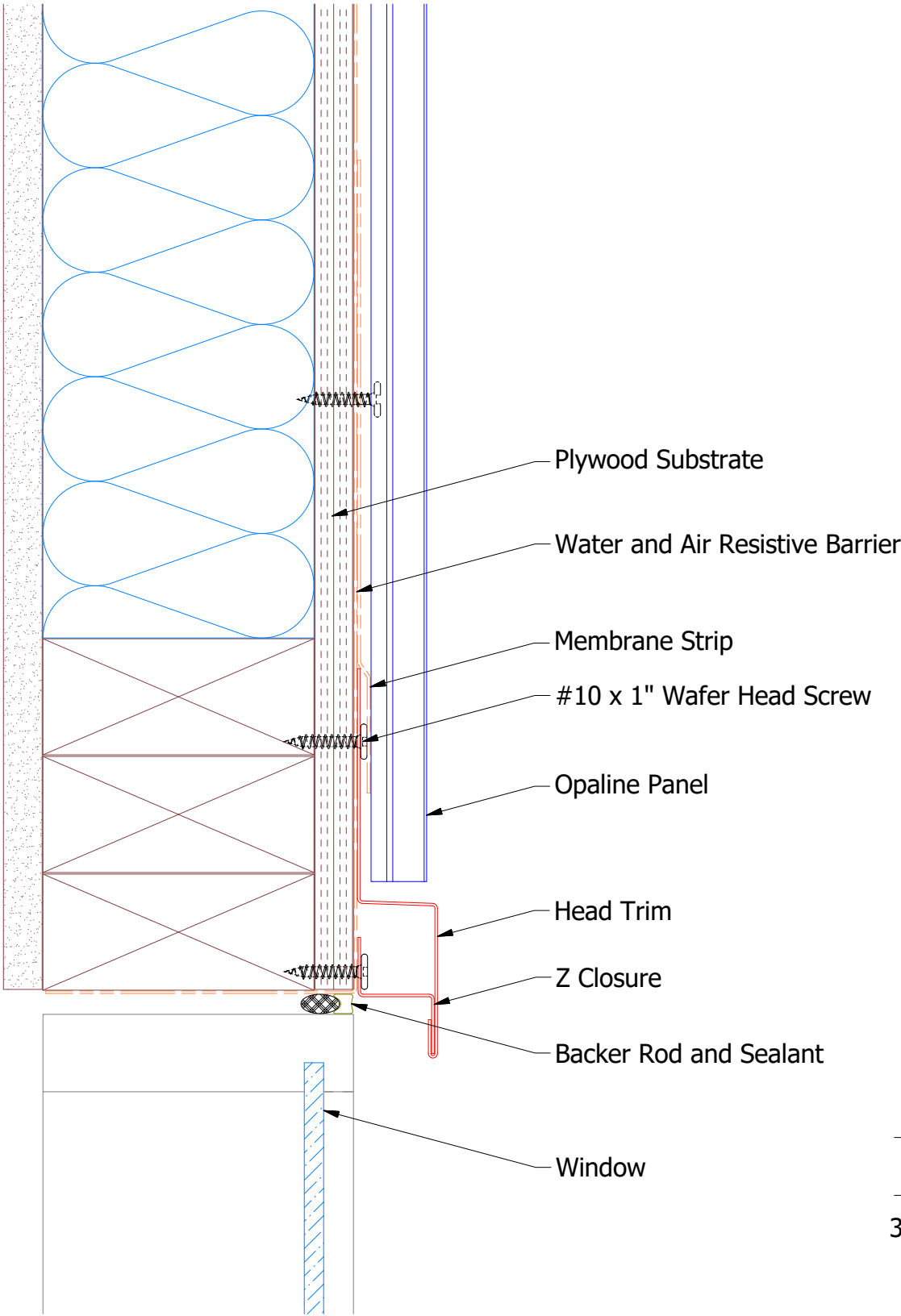


OPA034 - J Channel

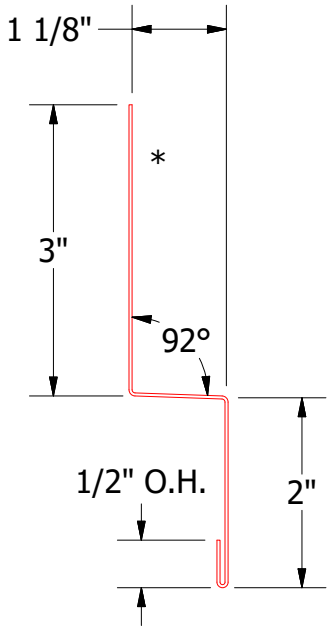
Note: * denotes color side.

				</					

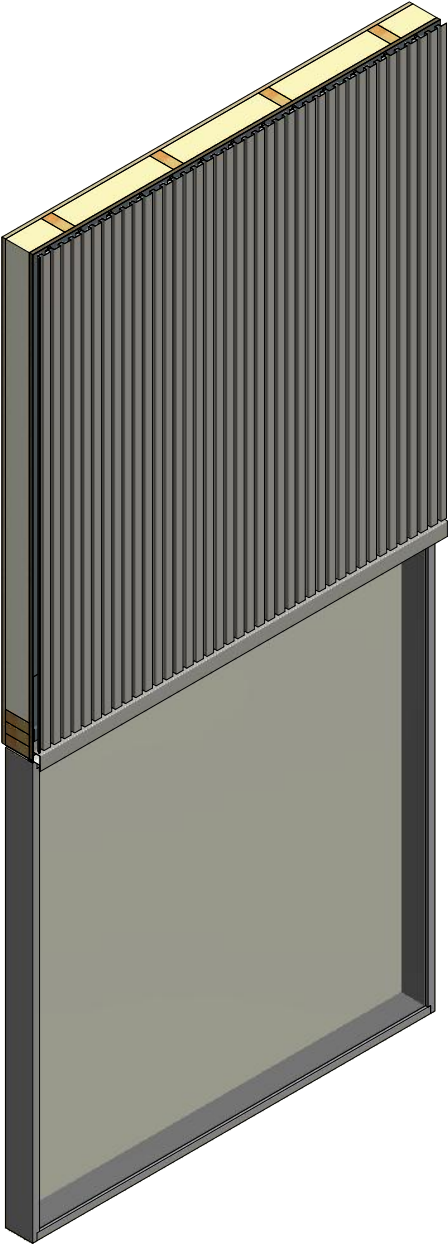
Vertical Panel



OPA681 - Z Closure



OPA550 - Head Trim



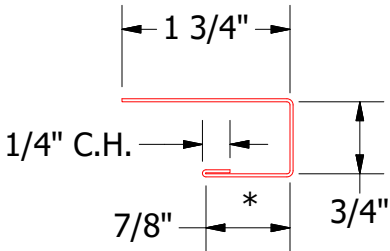
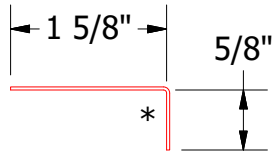
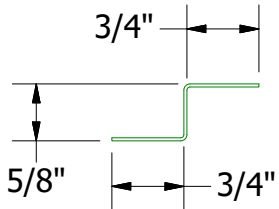
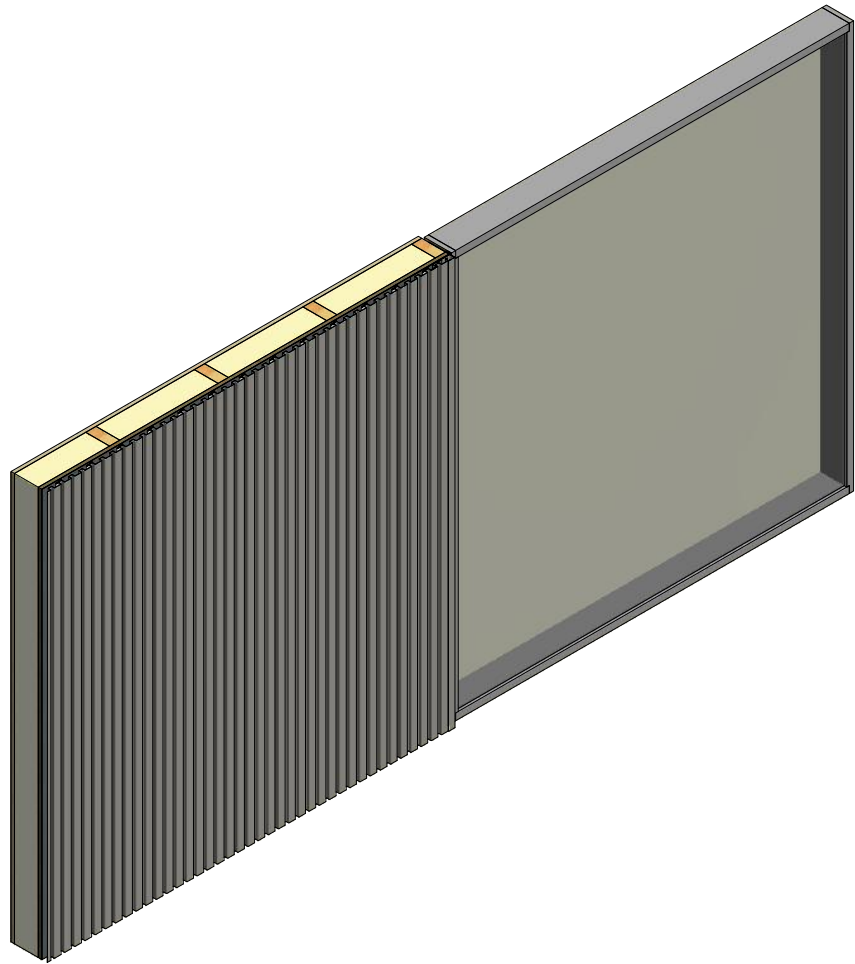
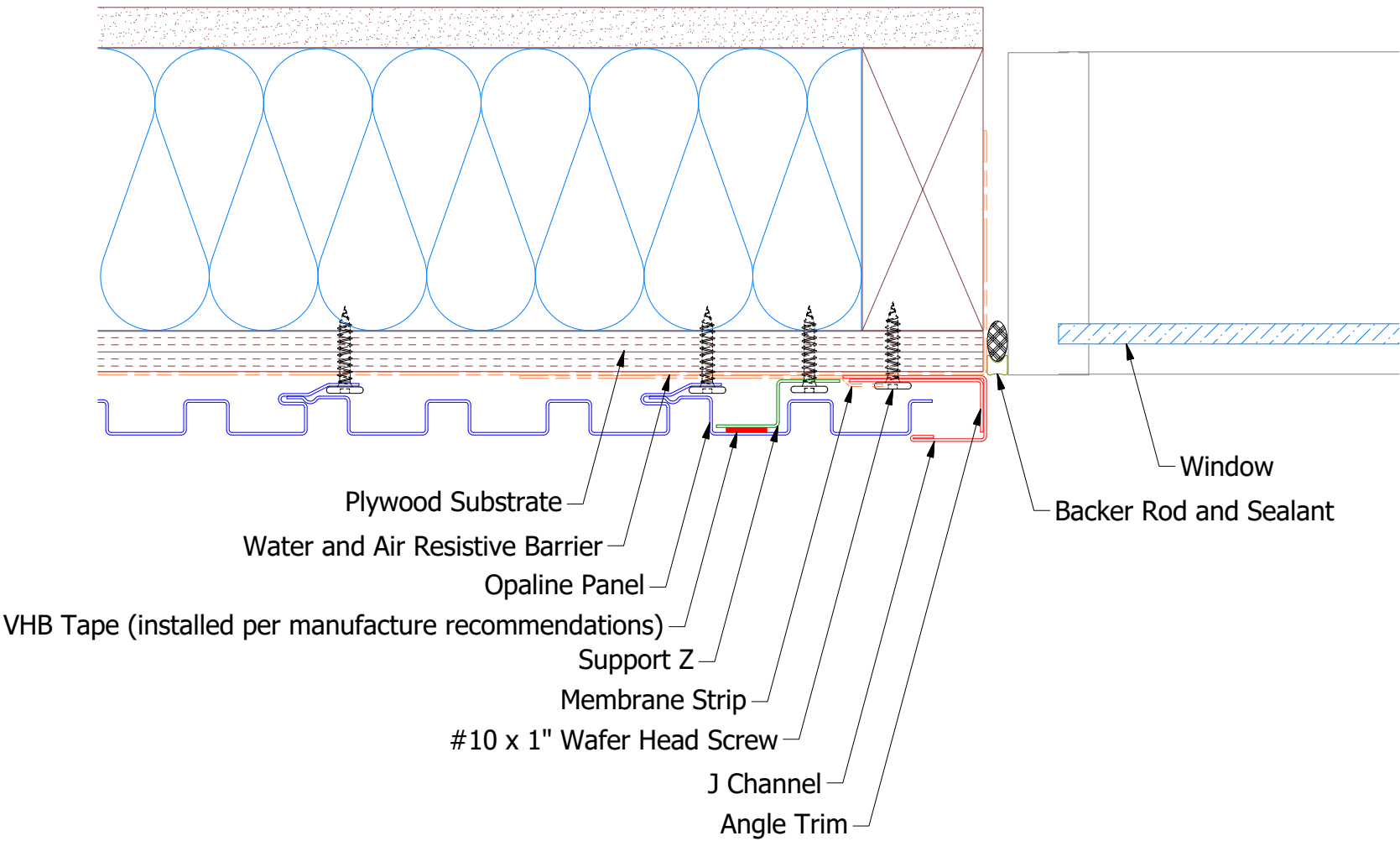
Note: * denotes color side.

				TITLE	
				Opaline Head Existing Window Detail	
REV. NO.		DATE		DWG. NO.	
				DR DMR	
				APP	
				DATE	
				MATERIAL	
				SH. SIZE B	
				SCALE X:X	



ATAS INTERNATIONAL, INC
Allentown PA
610-395-8445
Mesa AZ
480-558-7210

Vertical Panel



Note: * denotes color side.
Note: stainless steel pop rivets maybe needed along with VHB tape for longer panels.

					Opaline Existing Jamb Window Detail			
					DWG. NO.		DR	DATE
01	8/30/2021	Changed Pop Rivets to VHB Tape	KRK		MATERIAL		DMR	12/31/2018
REV. NO.	DATE	DESCRIPTION OF REVISION	BY	APP			APP	DATE
							SH. SIZE	SCALE
							B	X:X

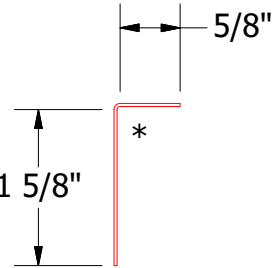
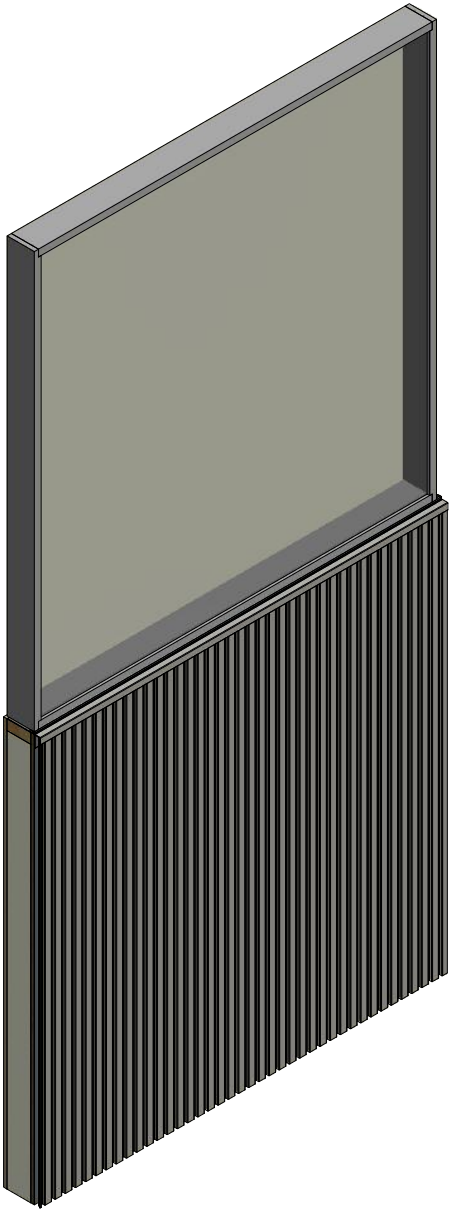
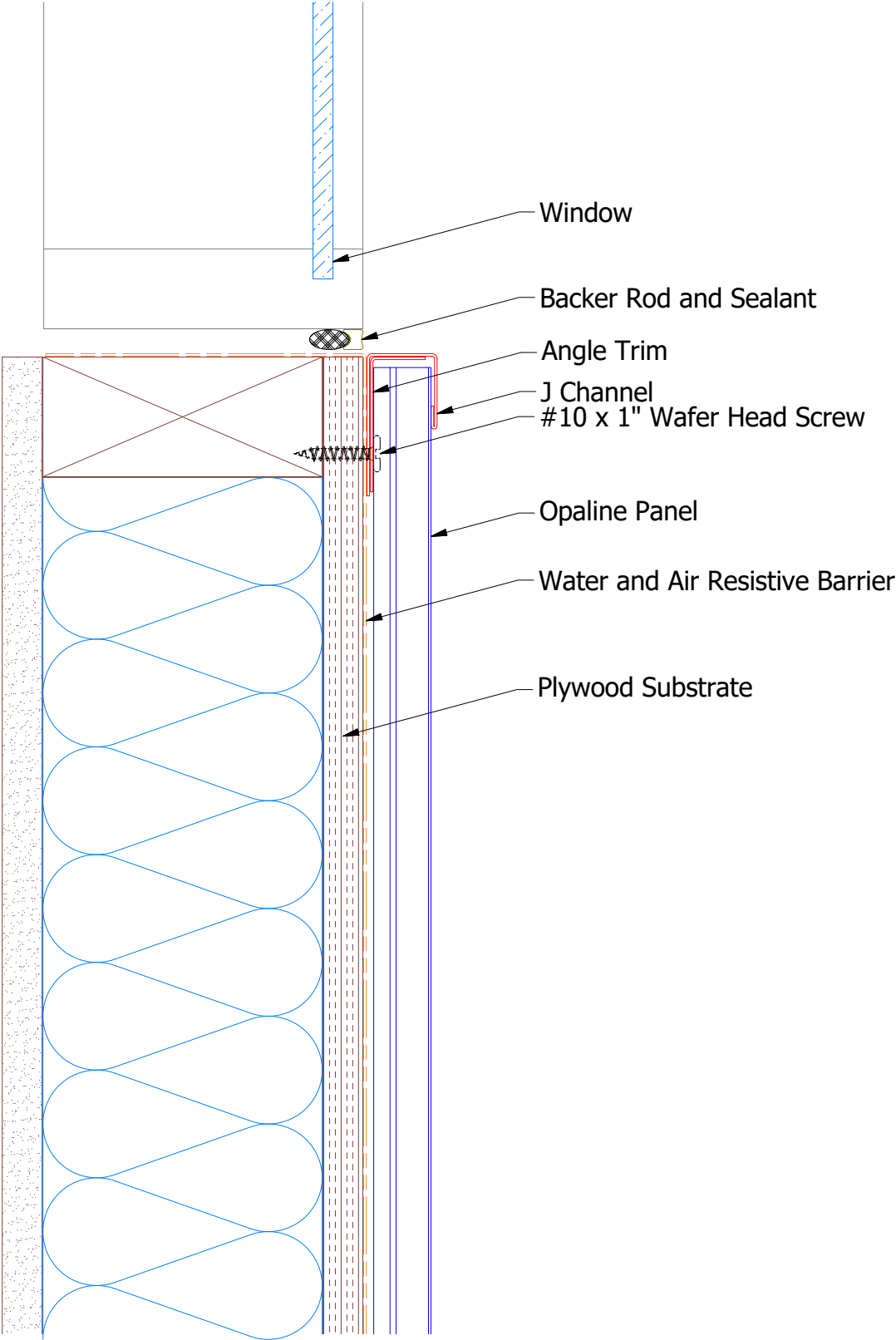


ATAS INTERNATIONAL, INC
Allentown PA
610-395-8445
Mesa AZ
480-558-7210

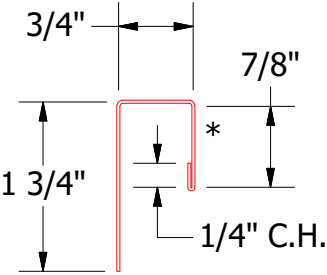
TITLE

Opaline Existing Jamb Window Detail

Vertical Panel



OPA680 - Angle Trim



OPA034 - J Channel

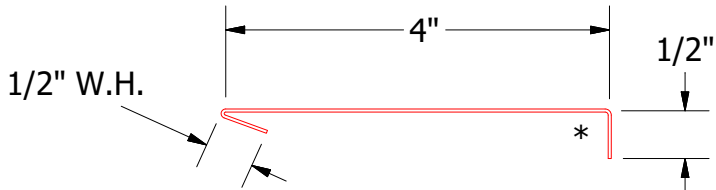
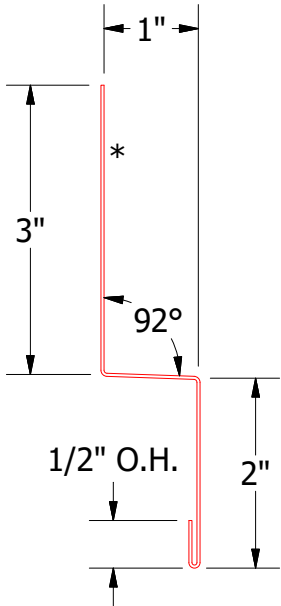
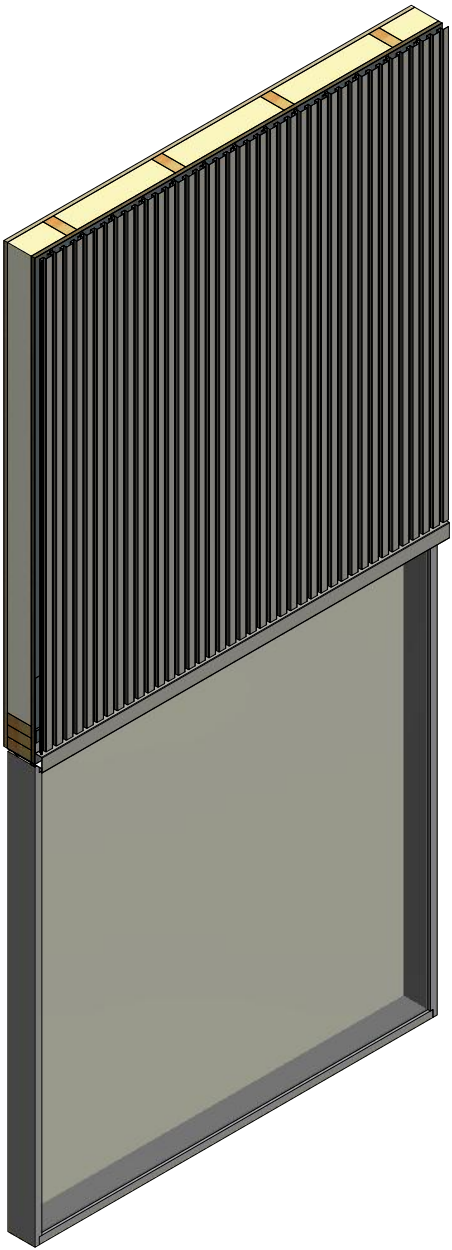
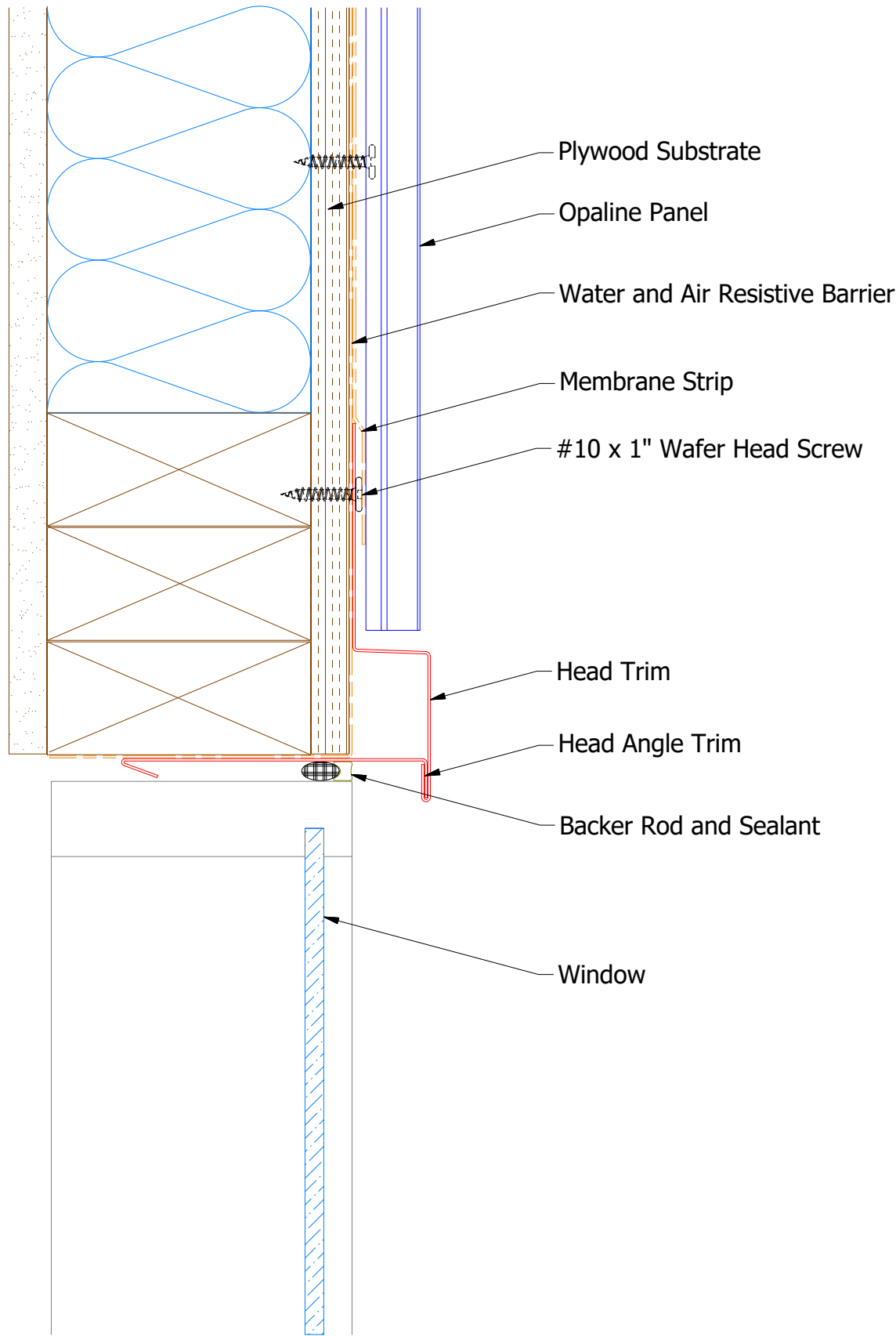
Note: * denotes color side.

				TITLE Opaline Existing Window Sill Detail		
		DWG. NO.		DR	DMR	DATE 12/31/2018
				APP		DATE
REV. NO.	DATE	DESCRIPTION OF REVISION	BY	APP	MATERIAL	SH. SIZE B
						SCALE X:X



ATAS INTERNATIONAL, INC
Allentown PA
610-395-8445
Mesa AZ
480-558-7210

Vertical Panel



Note: * denotes color side.

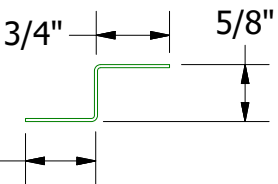
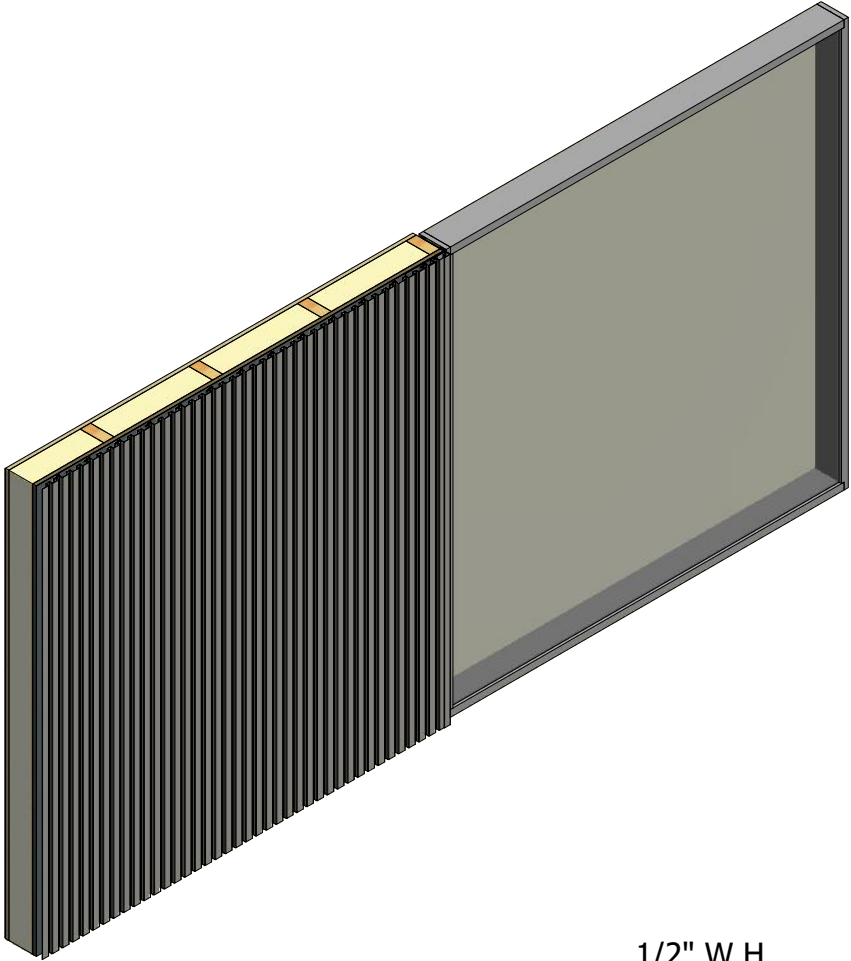
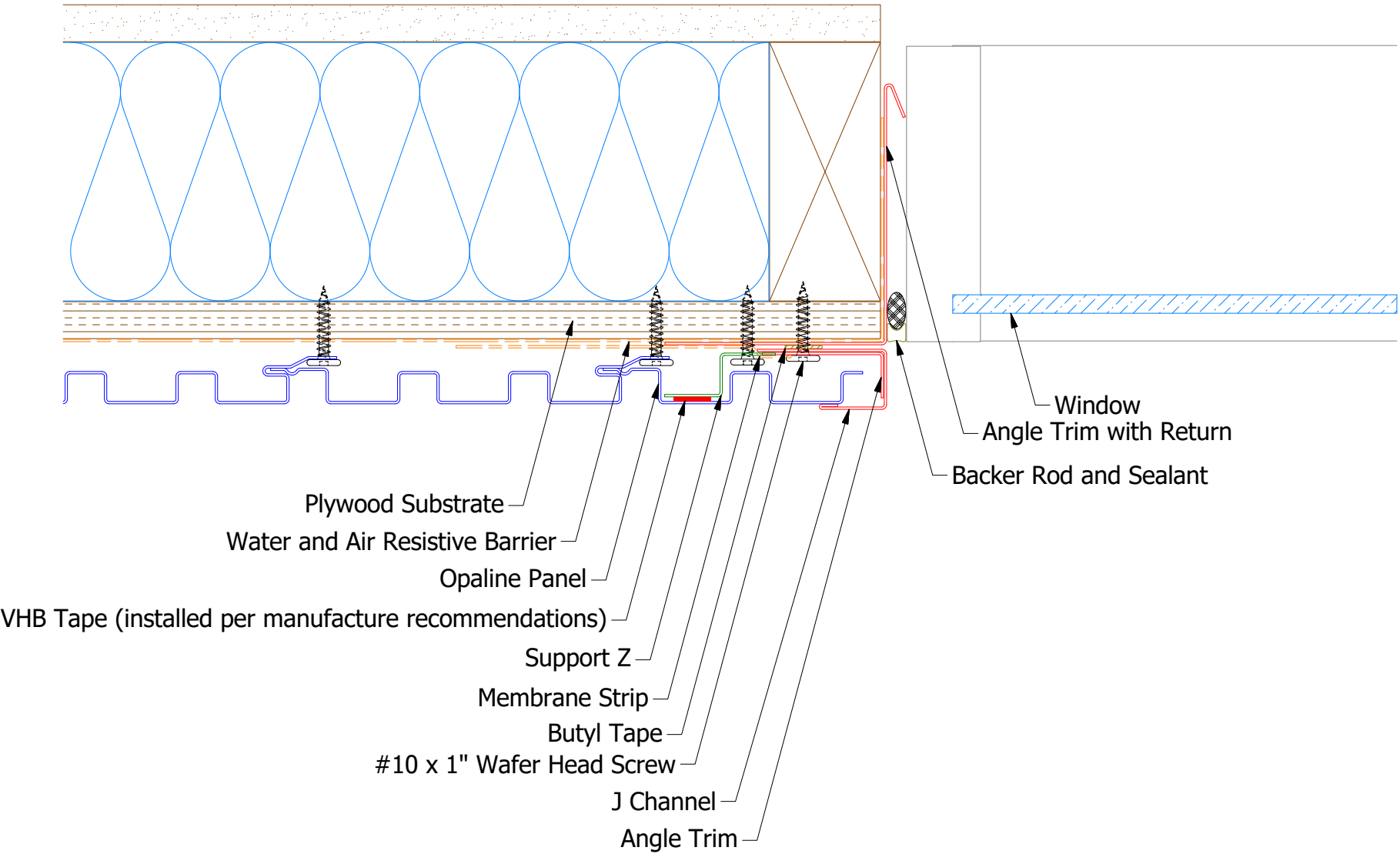
REV. NO.		DATE	DESCRIPTION OF REVISION	BY	APP
DWG. NO.		DR	MBP	DATE	7/6/2016
MATERIAL		APP	DAS	DATE	7/28/16
SH. SIZE		B	SCALE	X:X	



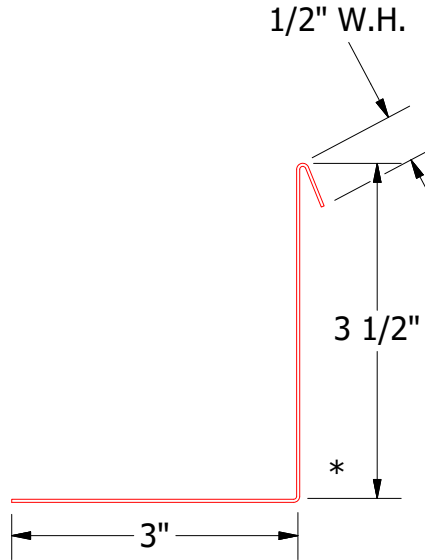
ATAS INTERNATIONAL, INC
Allentown PA
610-395-8445
Mesa AZ
480-558-7210

TITLE
Opaline Head Detail

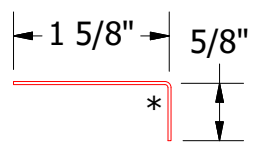
Vertical Panel



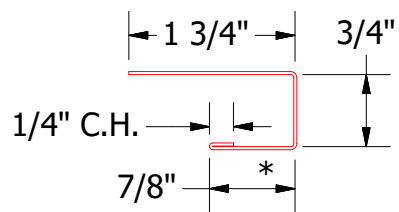
OPA681 - Support Z



OPA683 - Angle Trim With Return



OPA680 - Angle Trim

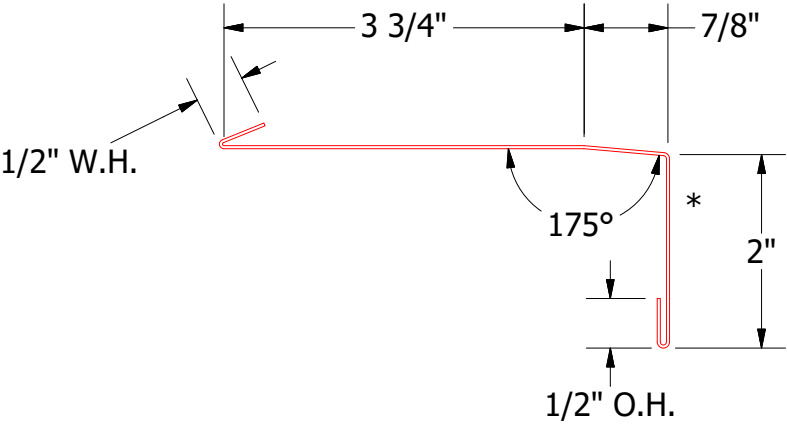
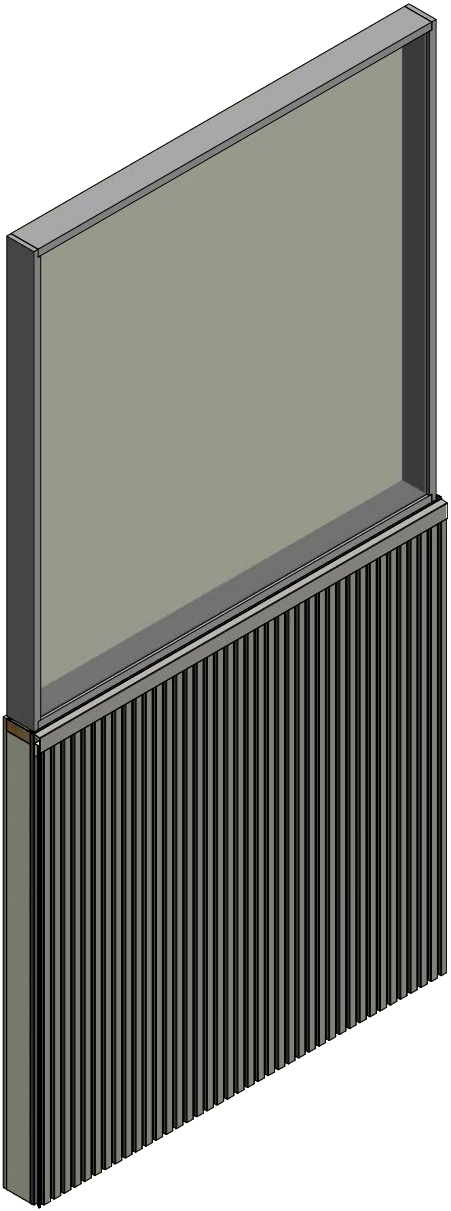
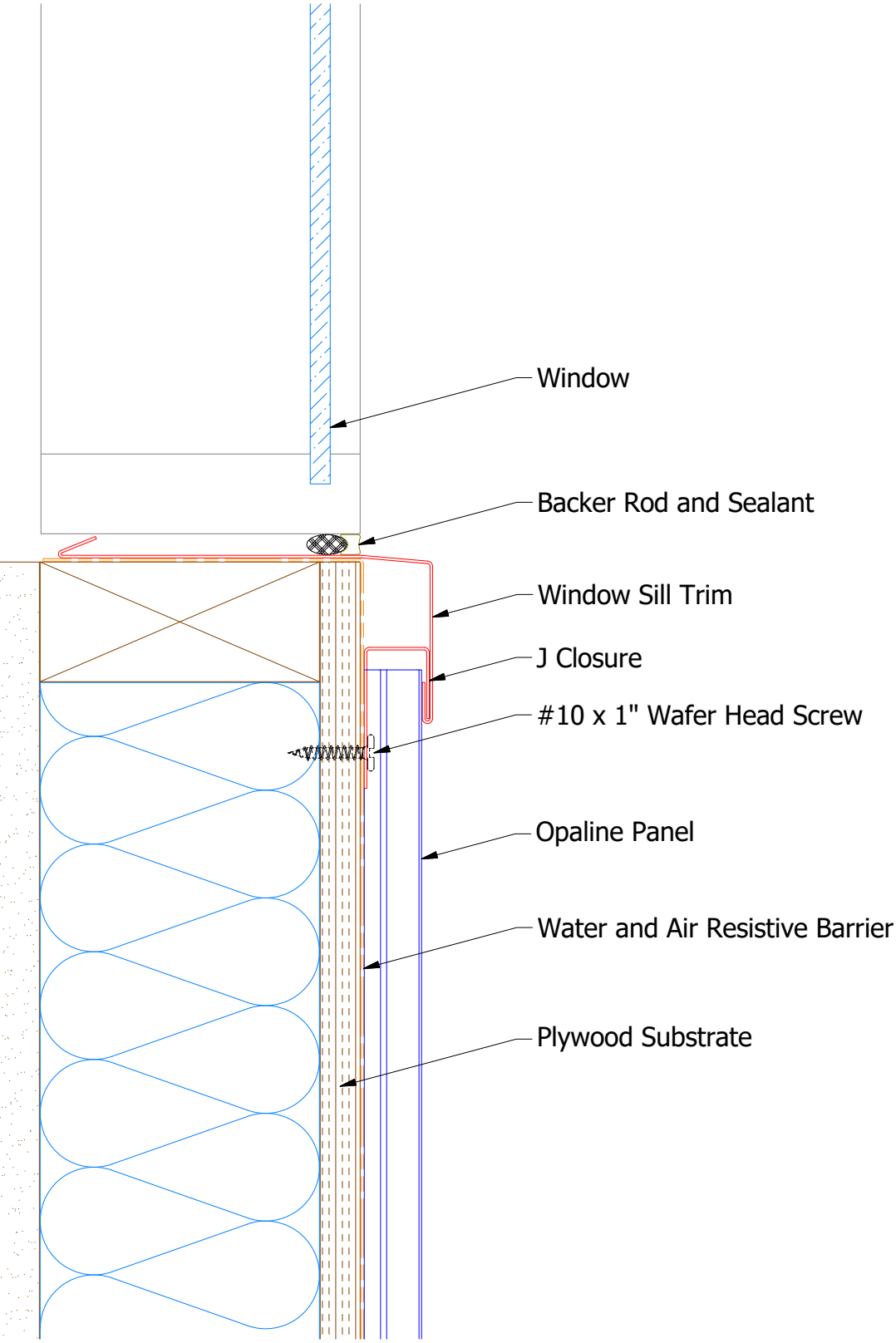


OPA034 - J Channel

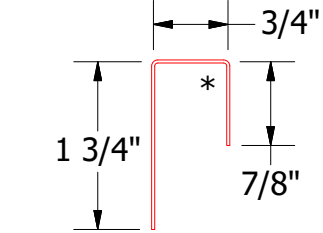
Note: * denotes color side.
Note: stainless steel pop rivets maybe needed along with VHB tape for longer panels.

TITLE				Opaline Jamb Detail			
DWG. NO.		DR		DATE		DATE	
01		MBP		7/6/2016		7/28/16	
REV. NO.		DATE		DESCRIPTION OF REVISION		BY	
01		8/30/2021		Changed Pop Rivets to VHB Tape		KPK	
MATERIAL		SH. SIZE		SCALE		X:X	
		B					

Vertical Panel



OPA670 - Window Sill Trim



OPA270 - J Closure

Note: * denotes color side.

				TITLE			
				Opaline Window Sill Detail			
				DWG. NO.		DR	DATE
						MBP	7/7/2016
						APP	DATE
						DAS	7/28/16
				MATERIAL		SH. SIZE	SCALE
						B	X:X
REV. NO.	DATE	DESCRIPTION OF REVISION	BY	APP			



ATAS INTERNATIONAL, INC
Allentown PA
610-395-8445
Mesa AZ
480-558-7210