



# ATAS International, Inc.

Sustainable Building Envelope Technology

Used in straight, tapered, and curved applications, with a choice of two seam options - the sky is the limit with PC System



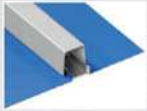
TWO-PART BATTEN OR SEAM DESIGN

# PC<sup>TM</sup> SYSTEM



# Make a **STATEMENT** with PC™ System

Mix and match colors of the flat panel and standing seam



...or batten seam for a unique aesthetic



Smooth



Embossed

## Features

### APPLICATION

- Precision leveling prior to forming
- Fasteners and clips allow panel to float without causing stress
- Crating for jobsite handling/staging
- Two-part system that consists of the flat panel and a separate seam or batten
- Seam is snapped over the clips, concealing the fastening system
- PC™ System panels are not structural and must be applied to a solid substrate

### LONGEVITY

- Fire resistant - will not burn or support combustion
- May be an insurance advantage
- Will not warp, crack, rot or peel
- Industry leading long term warranty
- Resistant to high wind, torrential rain, heavy snow and ice loads
- High quality and time-proven painting and pretreatment technologies
- PVDF Coating System

### PERFORMANCE STANDARDS

- Environmentally friendly - ENERGY STAR® qualified colors available. Contact ATAS for current color listings
- Tested in accordance with UL 790/ASTM E 108, UL 580, ASTM E 283, ASTM E 331, UL 2218, ASTM E 84 Flame Spread
- MCA Roofing Certification
- High reflectivity of panels which increases energy efficiency





## Specifications

PC™ Pan SKU: PCP110, PCP120, PCP150, PCP999

PC™ Seam SKU: PCS114

PC™ Batten SKU: PCB001, PCB002

PC™ Copper SKU: PCP147

### Gauge

.032 and .040 aluminum, 24 ga. metallic coated steel,  
16 oz. Copper (PCP147 only)

### Panel Width

11 1/4", 12 5/8", 14 5/8"\*, 15 1/4", Custom

\*Copper and Dark Bronze Anodized Only

### Panel Length

Cut to customer specifications with a minimum of 2'-0",  
maximum to transportation limits and/or product and  
project design considerations

### Seam Height

Standing Seam 1", Batten Seam 1" x 1 1/2"  
and 2" x 1 1/2"

### Available

Straight, Tapered, Convex or Concave

### Texture

Embossed, Smooth

### Finish

Kynar 500® PVDF or Hylar 5000® PVDF

### Colors

Choice of 31 standard colors

### Anodized

Clear, Dark Bronze

### Accessories

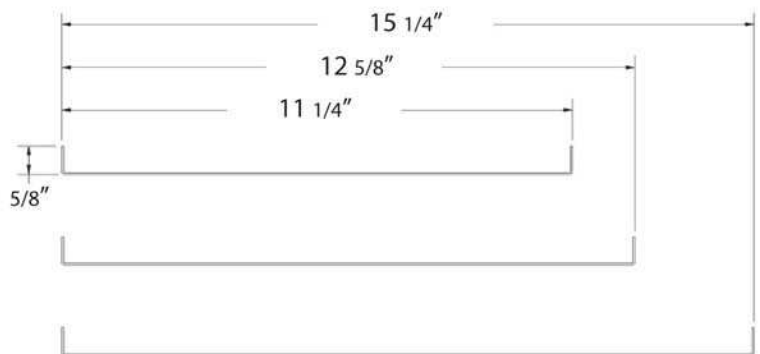
A complete line of trims available in matching colors,  
gauge, and finish or as specified

### Custom Capabilities

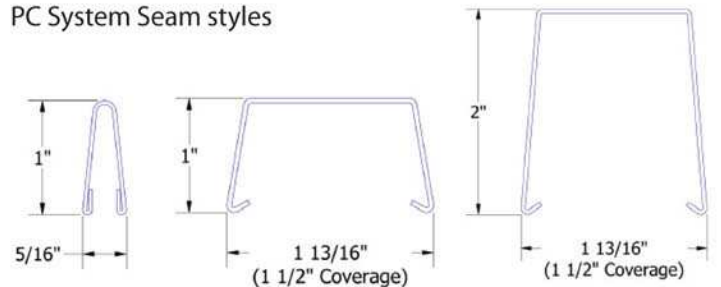
Tapering/Curving

### Minimum Slope

3:12



### PC System Seam styles



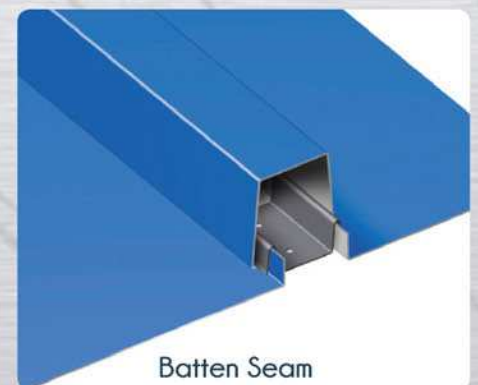
## PC™ System Design Advantages

The PC System consists of two parts, the flat panel and a separate seam or batten. The seam is snapped over the clips, concealing the fastening system.

With the batten seam style, the system is installed with a spacer clip and is snapped in place.



Standing Seam



Batten Seam

STANDARD COLORS

Black (02) SRI: -1	Hartford Green (27) SRI: 23	Regal Blue (18) SRI: 23
Classic Bronze (01) SRI: 2	Forest Green (11) SRI: 29	Siam Blue (14) SRI: 35
Medium Bronze (03) SRI: 33	Hemlock Green (30) SRI: 30	Slate Blue (21) SRI: 31
Chocolate Brown (04) SRI: 25	Patina Green (12) SRI: 47	Rocky Grey (16) SRI: 29
Sierra Tan (09) SRI: 37	Teal (19) SRI: 26	Charcoal Grey (62) SRI: 27
Sandstone (06) SRI: 66	Slate Grey (20) SRI: 39	Dove Grey (13) SRI: 58
Concord Cream (05) SRI: 78	Ascot White (10) SRI: 96	Bone White (26) SRI: 85

PREMIUM FINISH

Clear Anodized (70) SRI: 92	Dark Bronze Anodized (71) SRI: 6
Acrylic Coated Galvalume® (97) SRI: 58	

PREMIUM FINISH

Silversmith (28) SRI: 51	Antique Patina (24) SRI: 25
Brite Red (17) SRI: 39	Champagne (31) SRI: 62
Coppertone (23) SRI: 57	Titanium (TT) SRI: 59



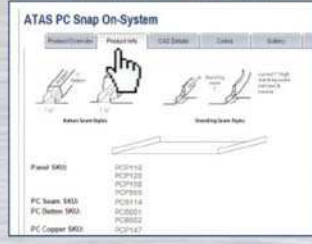
Visit us online



Try our product visualizer



Get product info.



Download CAD Details



Browse photos



View tech. data



# THE ATAS DIFFERENCE



PC System machine

- Stationary machine
- Controlled environment
- Precision leveling

ATAS's professional staff is able to assist in the design or provide shop drawings for your project. Final choice of materials and installation is the responsibility of the owner, architect and/or the owner's agent. ATAS International, Inc. cannot be held responsible for the ultimate selection or the installation of those materials. Due to slight stress in metal materials and substrates to which metal panels are applied, installed panels may exhibit a perceived waviness in the flat areas of the panel. Commonly the period and amplitude of the waviness is dependent upon the continuous flat width of the panel. This condition is beyond the control of ATAS and consequently this perceived waviness or "oil canning" of the product is not a valid reason for rejection of materials. (Refer to ASTM E 1514, ASTM E 1637 and Metal Construction Association Technical Bulletin 1060 for further clarification). ATAS reserves the right to modify, eliminate and/or change its products without prior notification. ATAS cannot be held responsible for errors in line drawings and typesetting. Inquire for availability. Colors are as close to the actual colors as modern printing allows. Exact color chips on request; this is a requirement for all premium colors. If you have requirements or preference for colors or finishes other than shown, contact ATAS. Color availability varies by material, gauge and profile. ATAS is not responsible for colors selected from this chart. Contact ATAS for more information.



**ATAS International, Inc.**  
 Allentown, PA ▪ Mesa, AZ ▪ Maryville, TN  
 800.468.1441 | www.atas.com | info@atas.com  
 © 2015 ATAS International, Inc.

Contact ATAS for more information. ATAS reserves the right to modify, eliminate and/or change its products without prior notification.

LRD0115 LAT927



PC™ System is a trademark of ATAS International, Inc. Kynar 500® PVDF is a registered trademark of Arkema. Hylar 5000® PVDF is a registered trademark of Solvay Plastics.