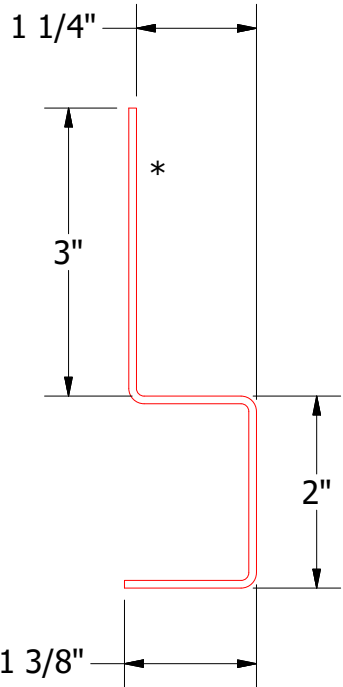
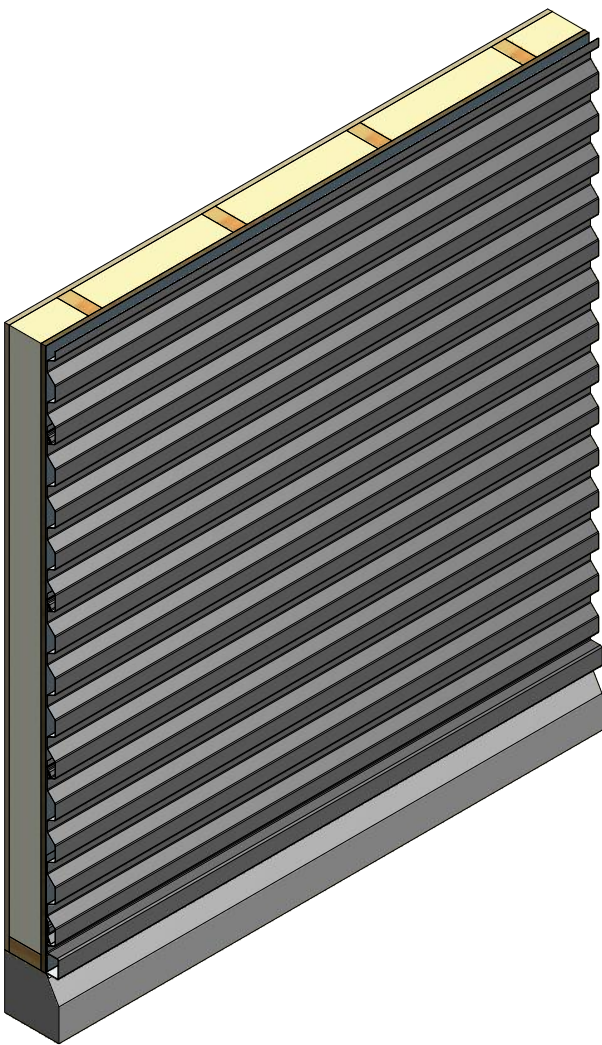
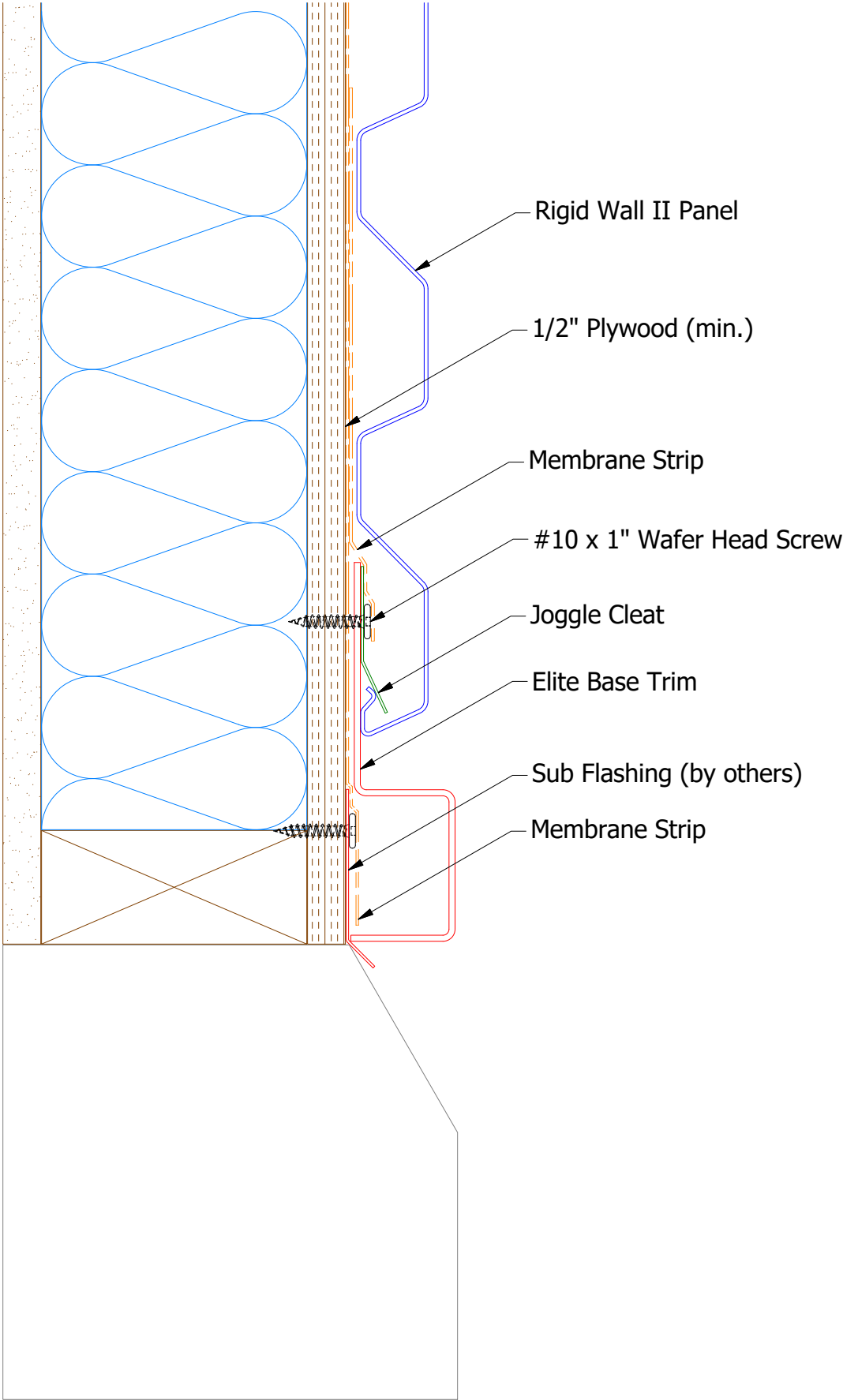
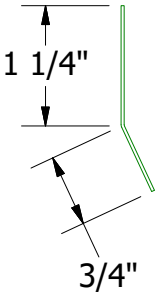


Horizontal Panel



Elite Base Trim



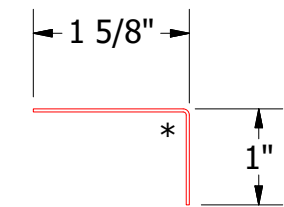
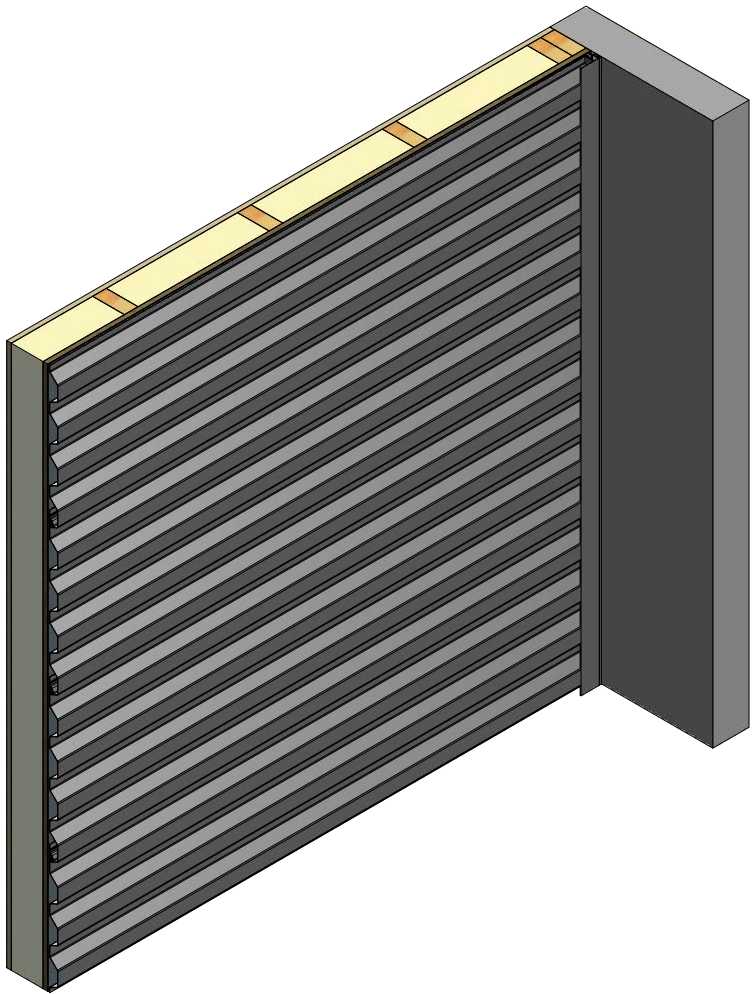
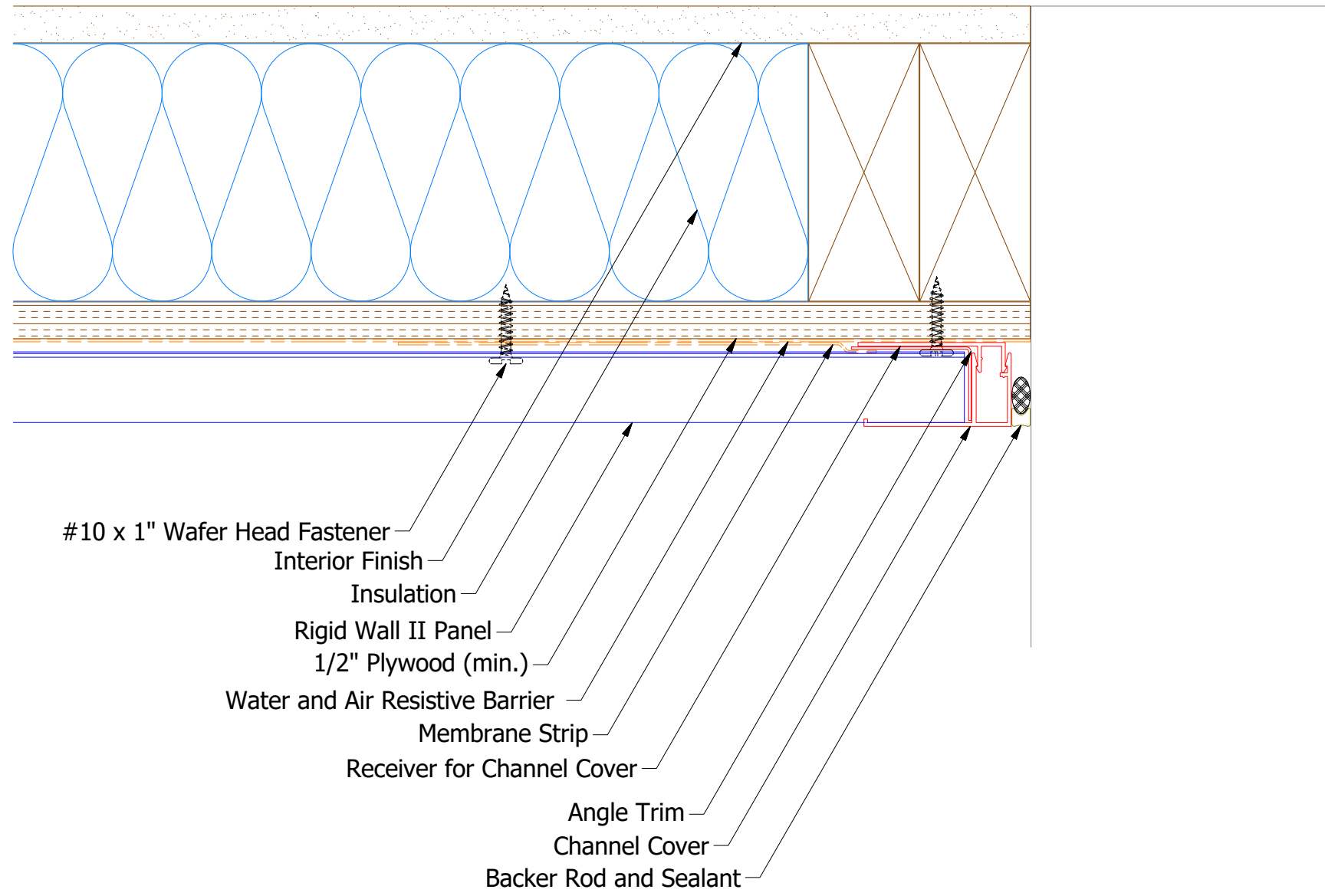
Starter Cleat

**Note:** \* denotes color side.

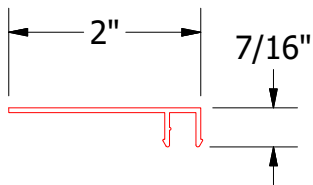
				TITLE	
				Rigid Wall II Elite Base Detail	
REV. NO.	DATE	DESCRIPTION OF REVISION	BY	APP	DWG. NO.
					DR
01	5/8/2020	Updated Extruded Base Trim to Elite Base Trim	KRK		DMR
					DATE
					1/25/2019
					MATERIAL
					SH. SIZE
					B
					SCALE
					X:X

ATAS  
ATAS INTERNATIONAL, INC  
Allentown PA  
610-395-8445  
Mesa AZ  
480-558-7210

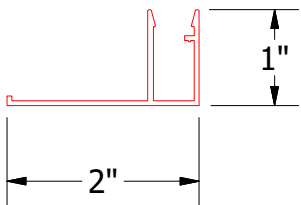
Horizontal Panel



Angle Trim



Receiver for Channel Cover

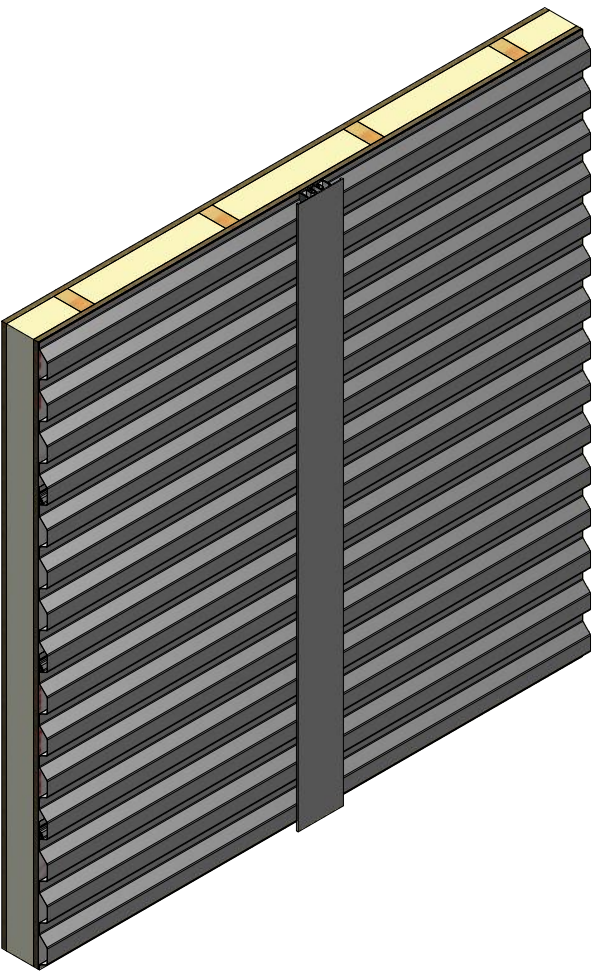
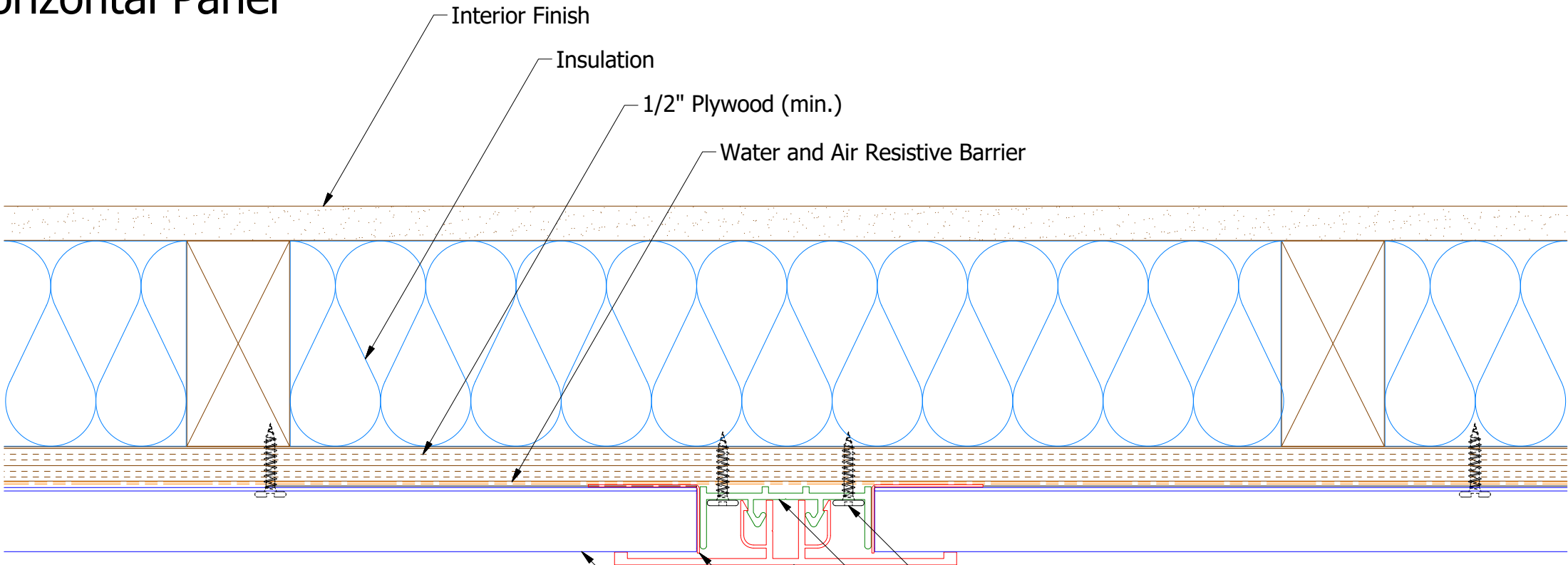


Channel Cover

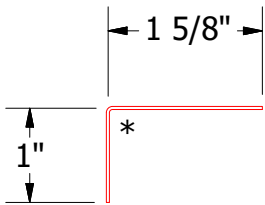
**Note:** \* denotes color side.

						Rigid Wall II Extruded Endwall Detail	

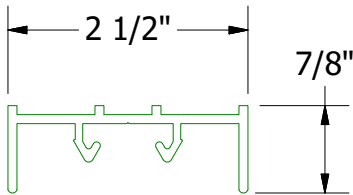
Horizontal Panel



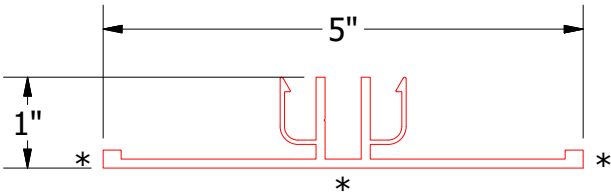
- #10 x 1" Wafer Head Fastener
- Receiver Extrusion for Flush Transition Cover
- Flush Transition Cover Extrusion
- Angle Trim
- Rigid Wall II Panel



MCA680 - Angle Trim



MAY902 - Receiver Extrusion for Flush Transition Cover

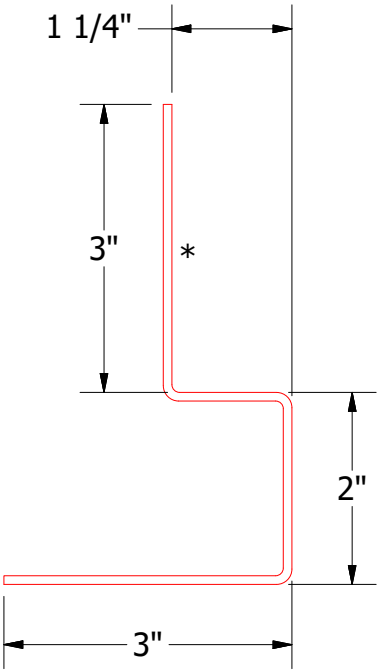
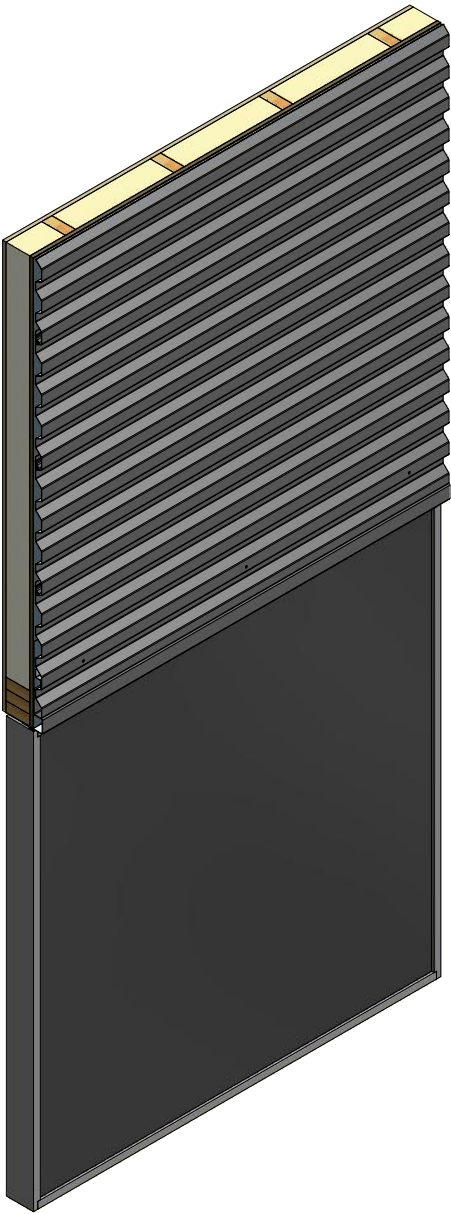
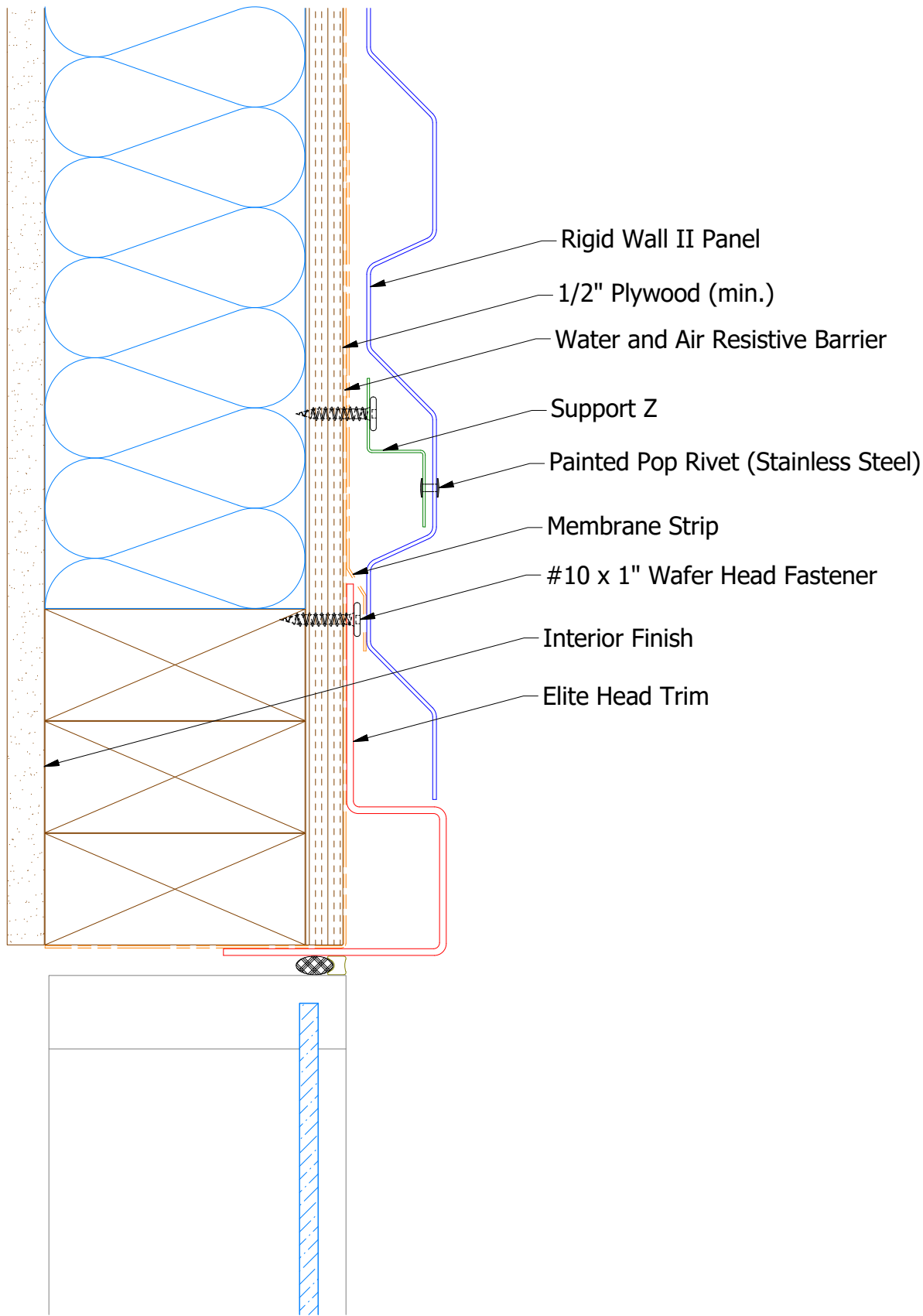


MAY102 - Flush Transition Cover Extrusion

**Note:** \* denotes color side.

				<div><div><div>ATAS</div><div>ATAS INTERNATIONAL, INC</div><div>Allentown PA</div><div>610-395-8445</div><div>Mesa AZ</div><div>480-558-7210</div></div></div>			
				TITLE Rigid Wall II Extruded Flush Detail			
		DWG. NO.		DR	DMR	DATE	2/7/2019
				APP		DATE	
REV. NO.		DATE		DESCRIPTION OF REVISION		BY	APP
						SH. SIZE	B
						SCALE	X:X

Horizontal Panel

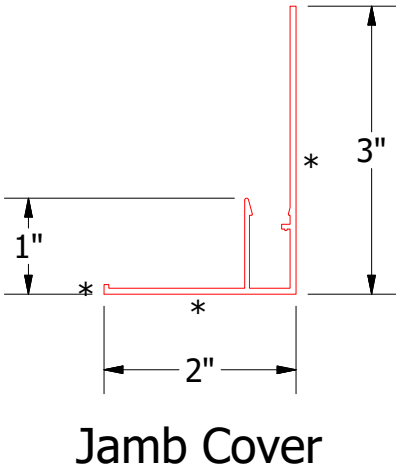
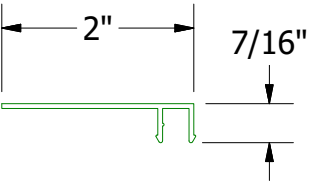
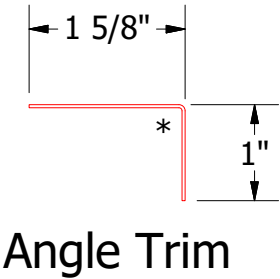
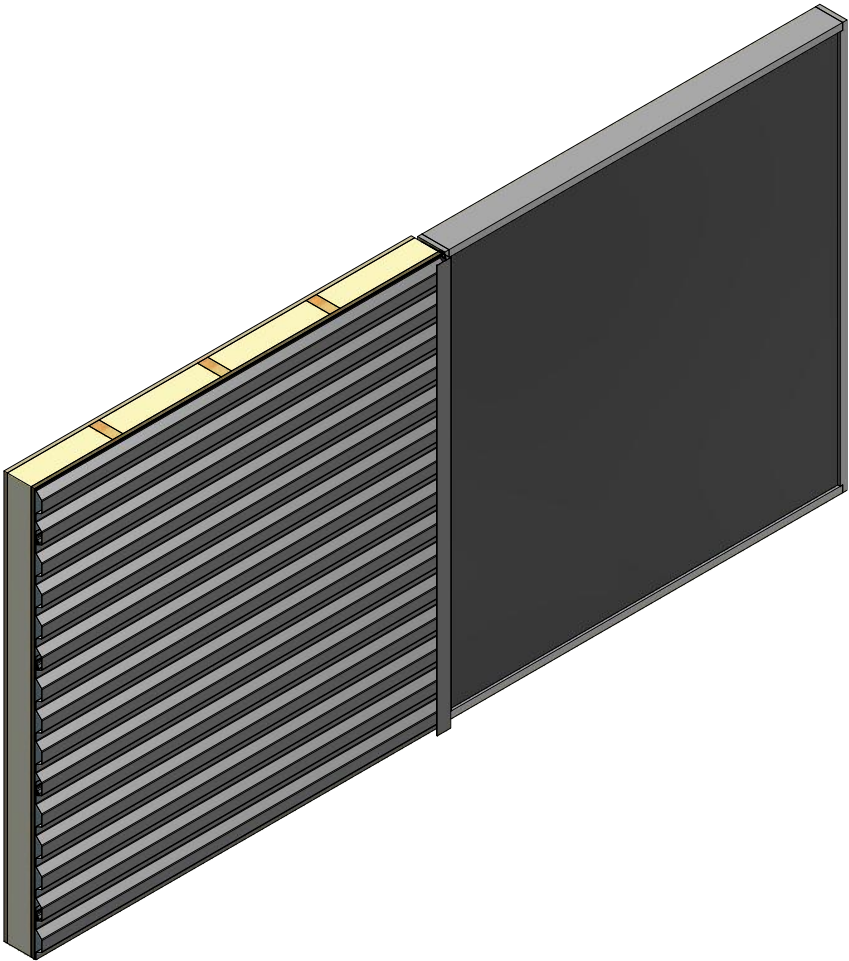
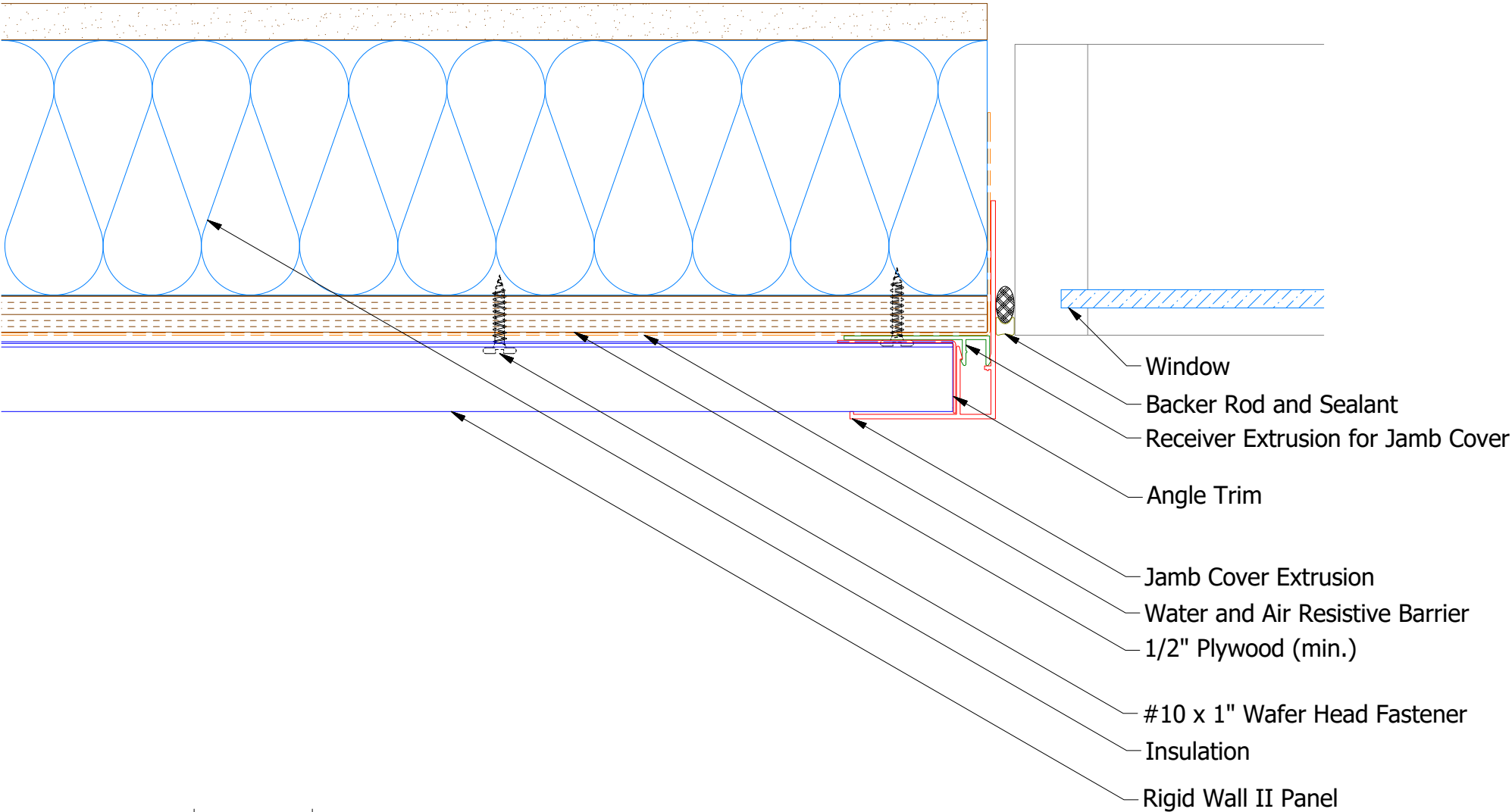


Elite Head Trim

**Note:** \* denotes color side.

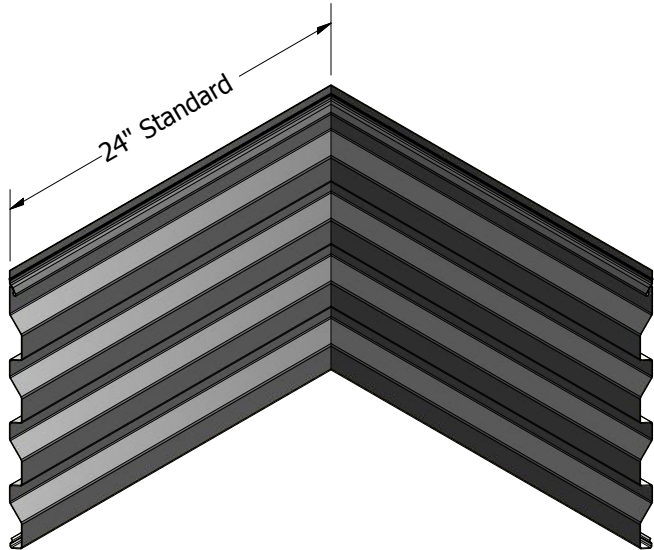
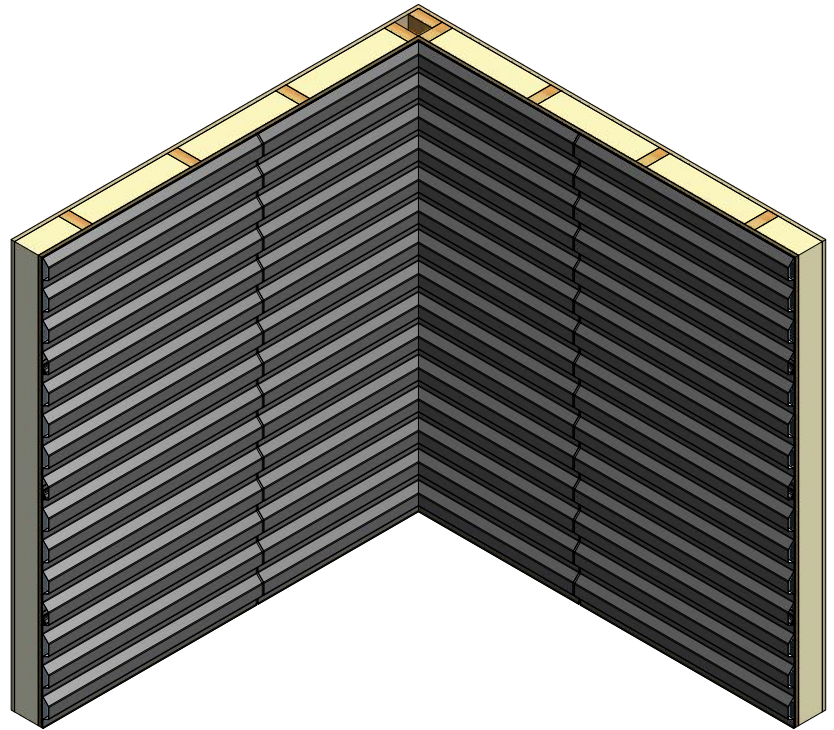
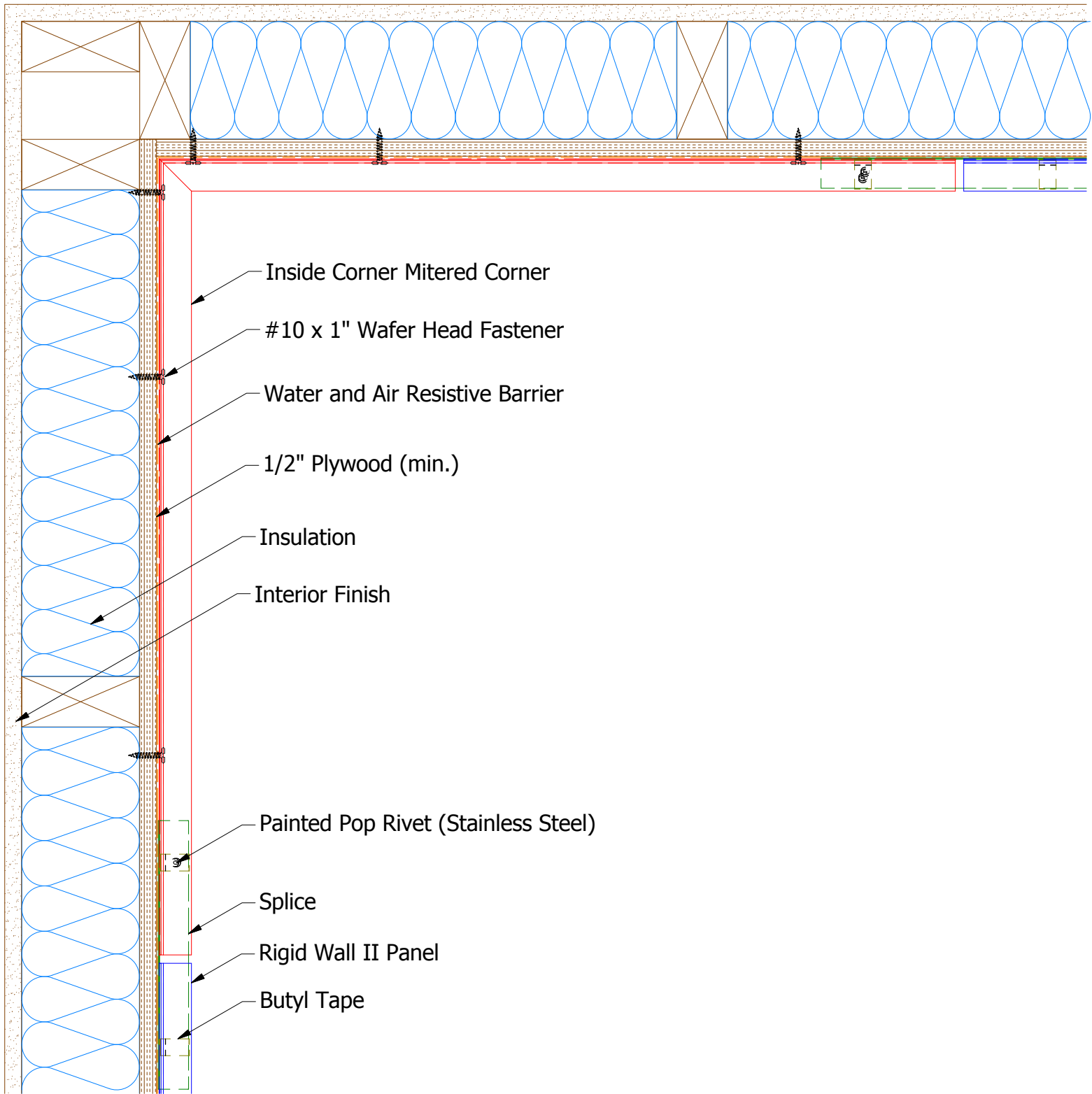



Horizontal Panel



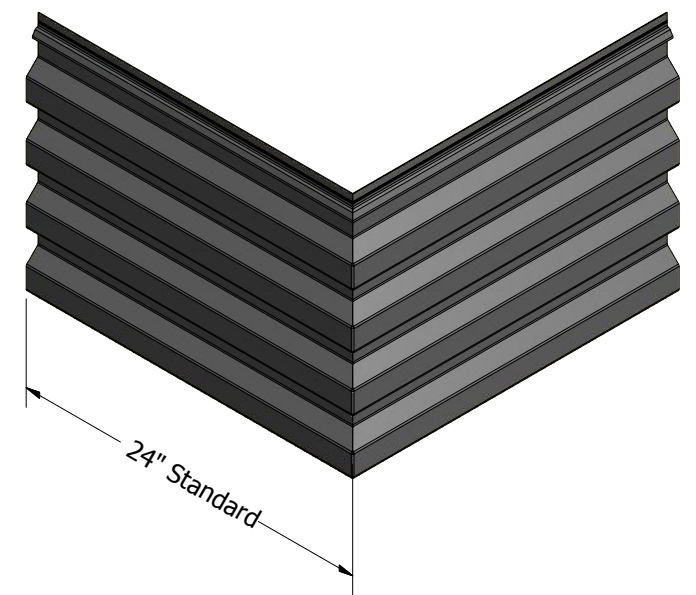
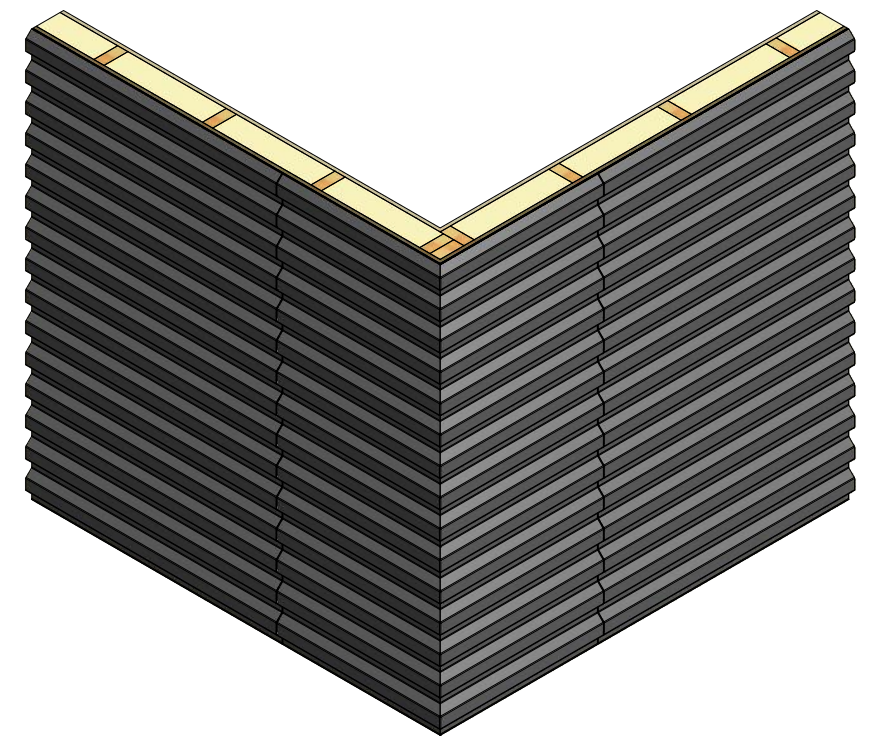
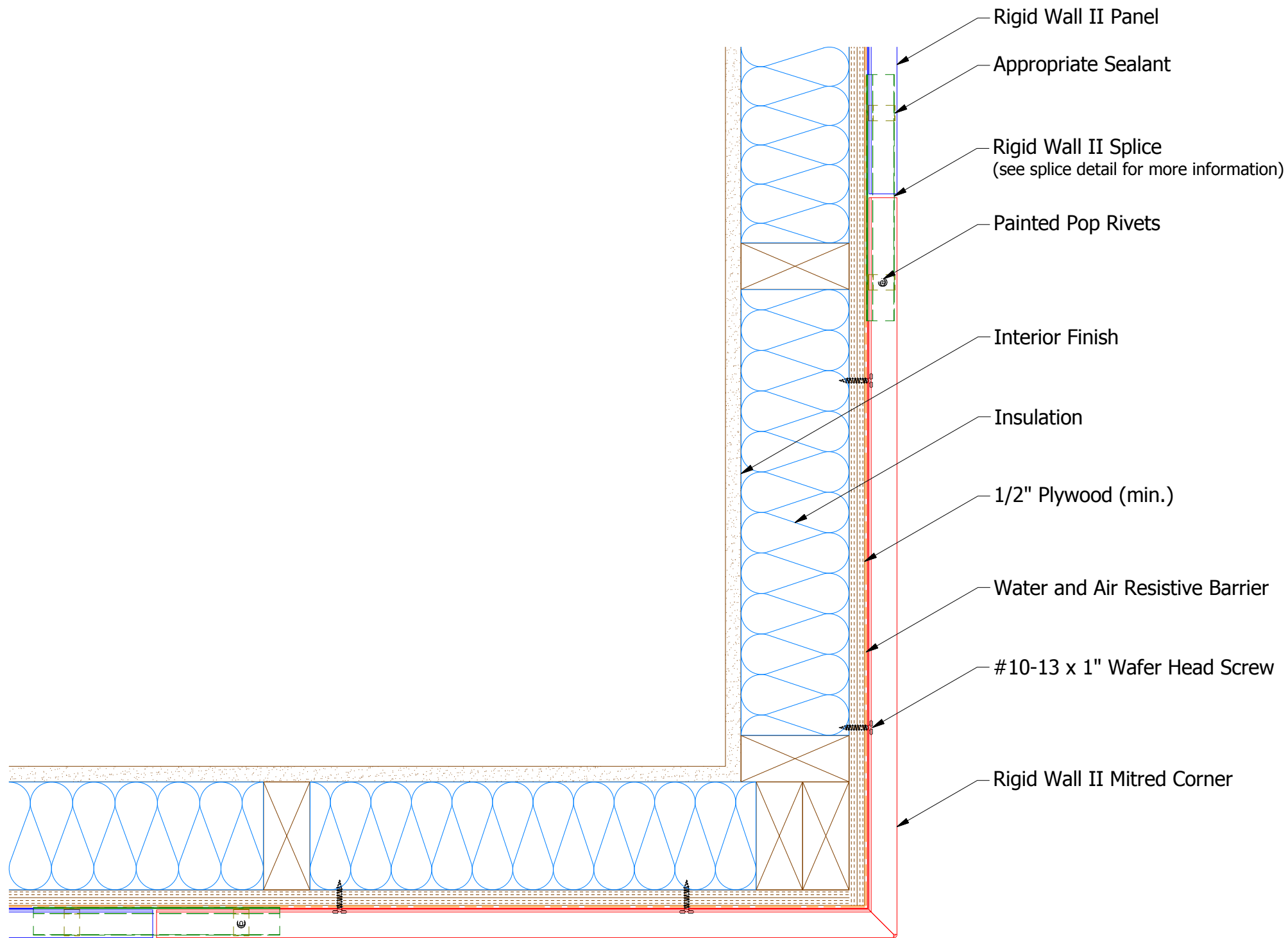
**Note:** \* denotes color side.

								Rigid Wall II Extruded Jamb Detail	
						DWG. NO.		DR	DATE
								DMR	2/8/2019
								APP	DATE
						MATERIAL			
REV. NO.	DATE	DESCRIPTION OF REVISION		BY	APP			SH. SIZE	SCALE
								B	X:X

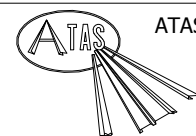


Rigid Wall II Mitered Corner

										Rigid Wall II Inside Mitered Corner Detail	



Rigid Wall II Mitered Corner



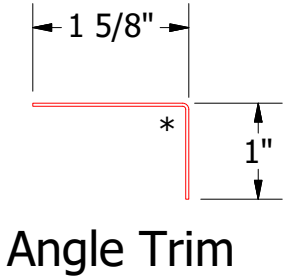
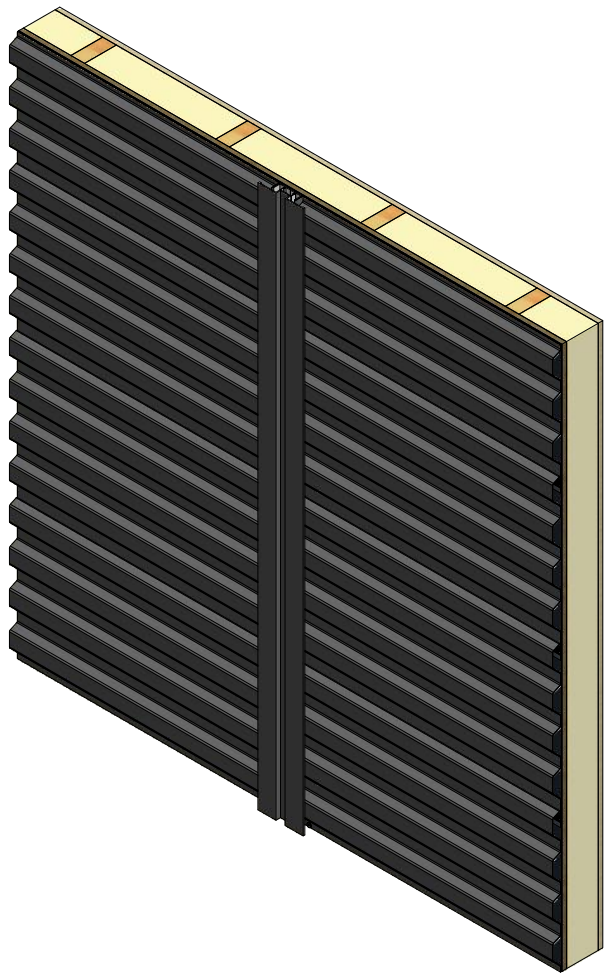
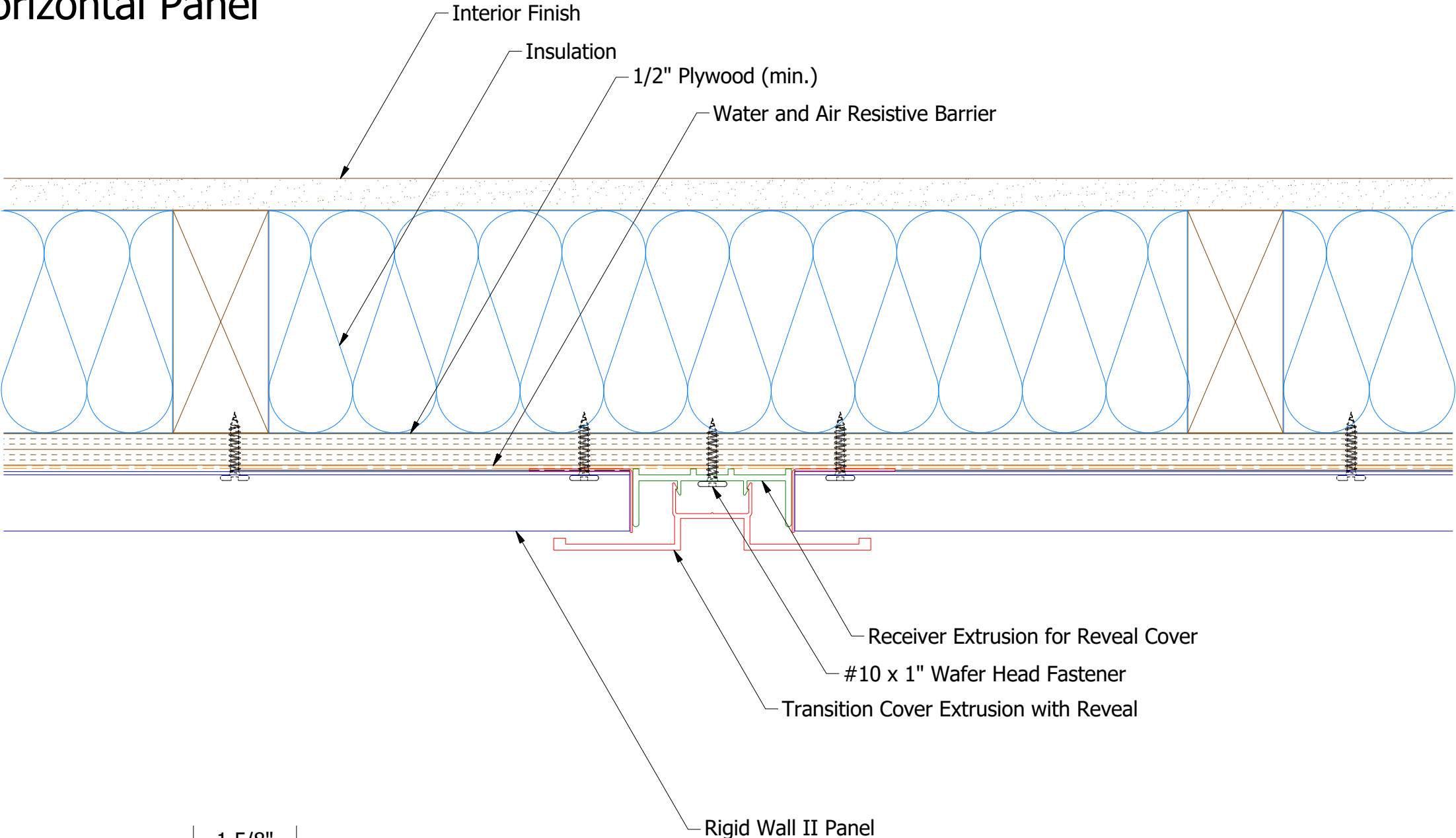
ATAS INTERNATIONAL, INC  
 Allentown PA  
 610-395-8445  
 Mesa AZ  
 480-558-7210

TITLE			
Rigid Wall II Mitred Corner Detail			
DWG. NO.	DR	KRK	DATE
	APP		DATE
MATERIAL	SH. SIZE	B	SCALE
			X:X

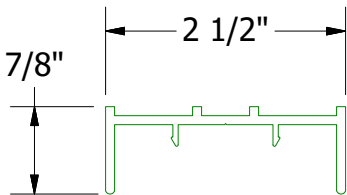
REV. NO.	DATE	DESCRIPTION OF REVISION	BY	APP



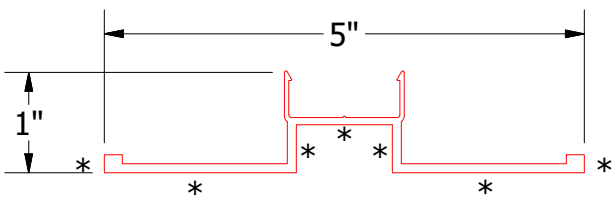
Horizontal Panel



Angle Trim



Receiver Extrusion for Reveal Cover

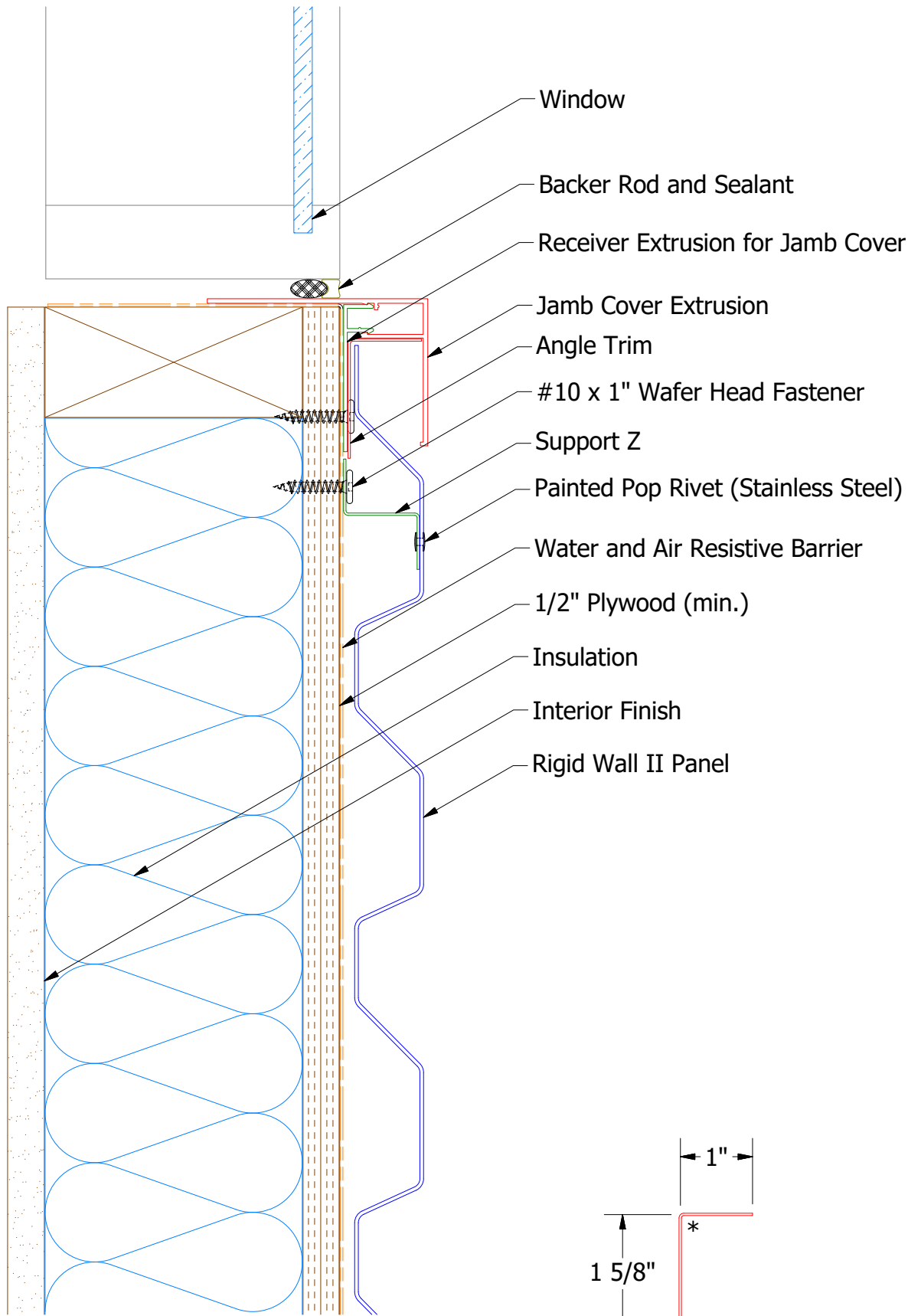


Transition Cover Extrusion with Reveal

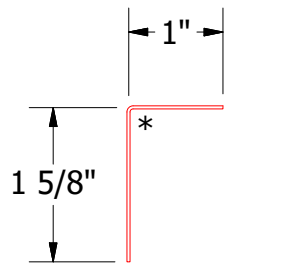
**Note:** \* denotes color side.



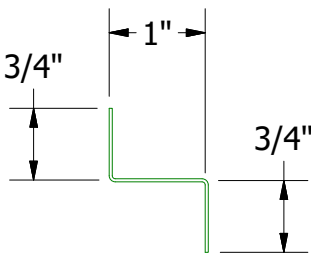

Horizontal Panel



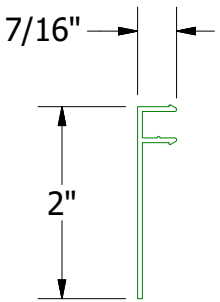
**Note:** \* denotes color side.



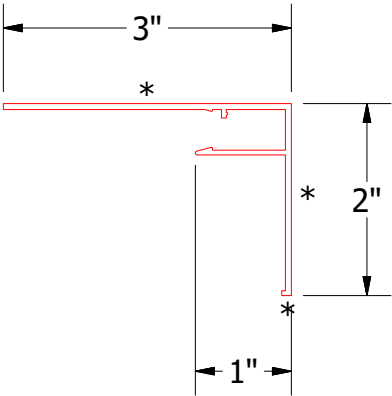
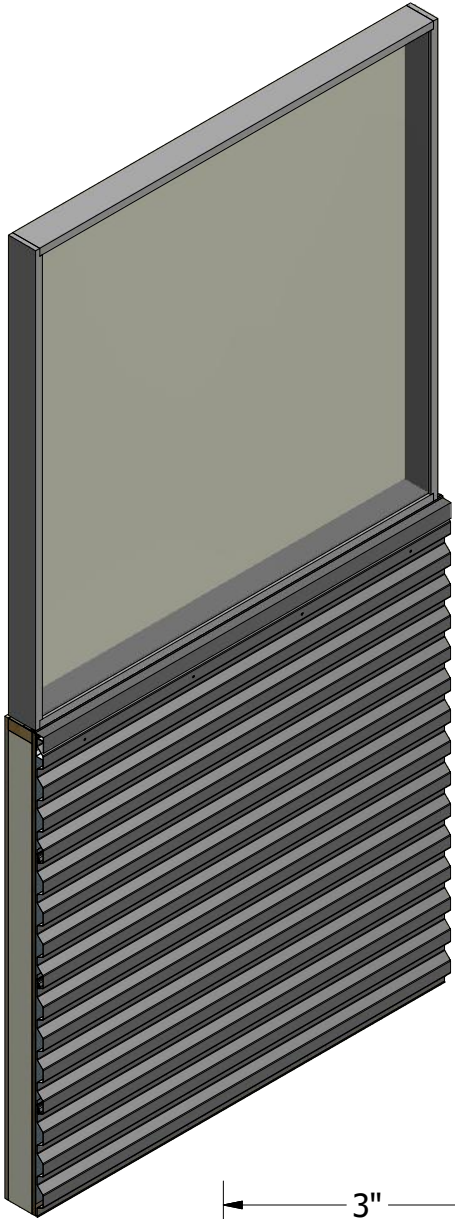
Angle Trim



Support Z



Receiver Extrusion for Jamb Cover



Jamb Cover
