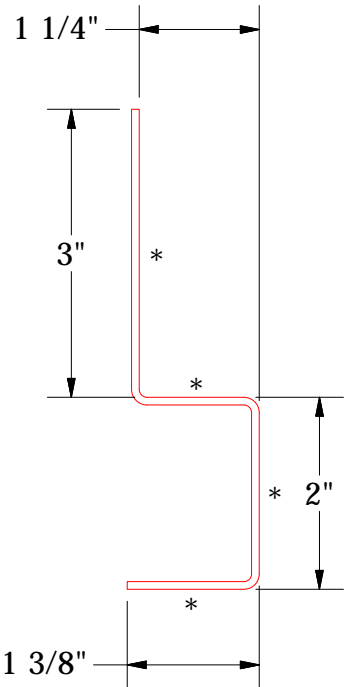
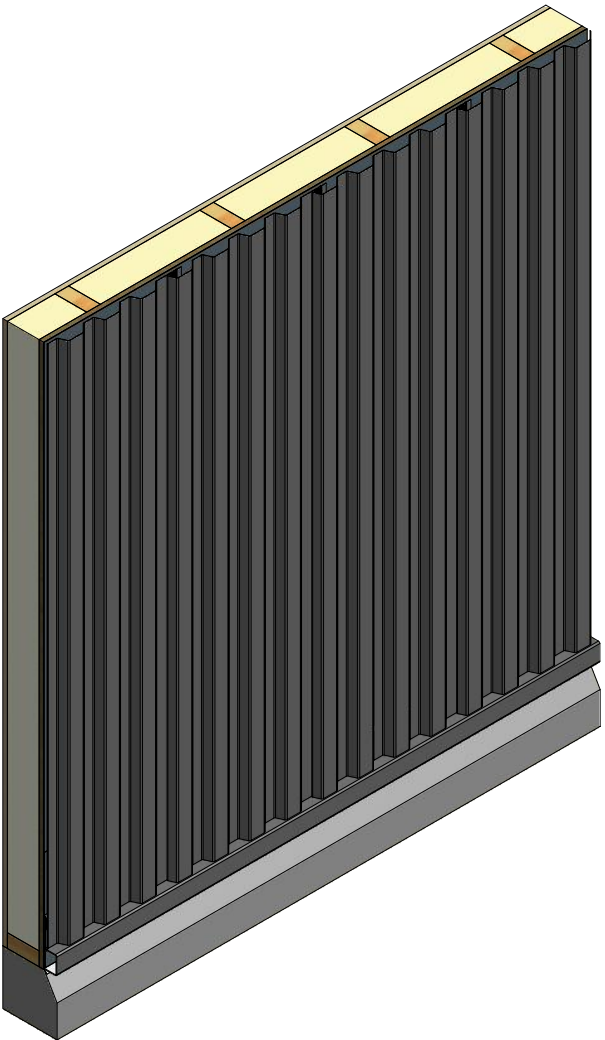
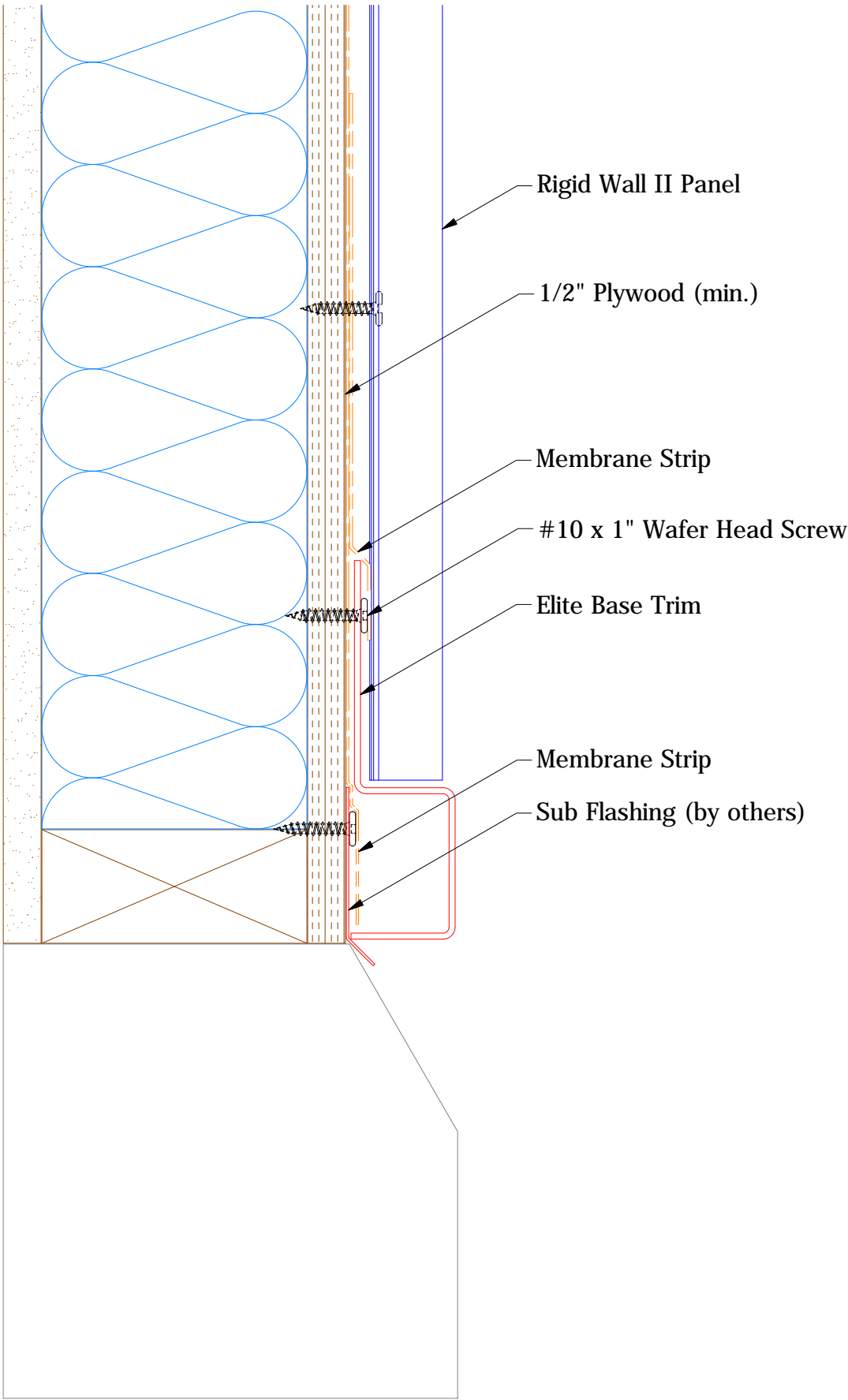


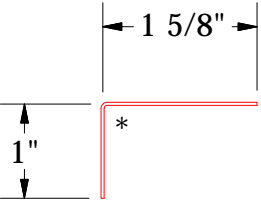
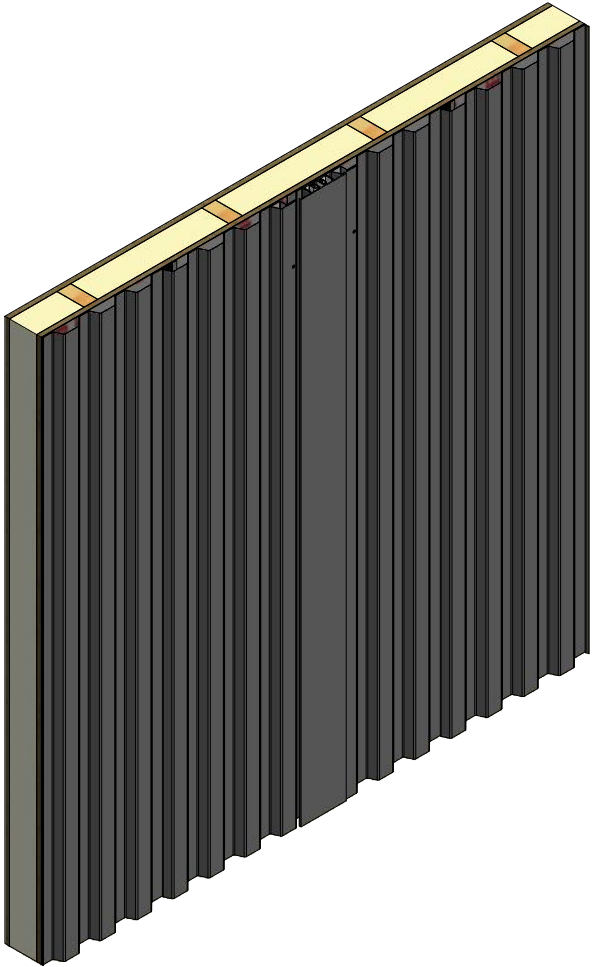
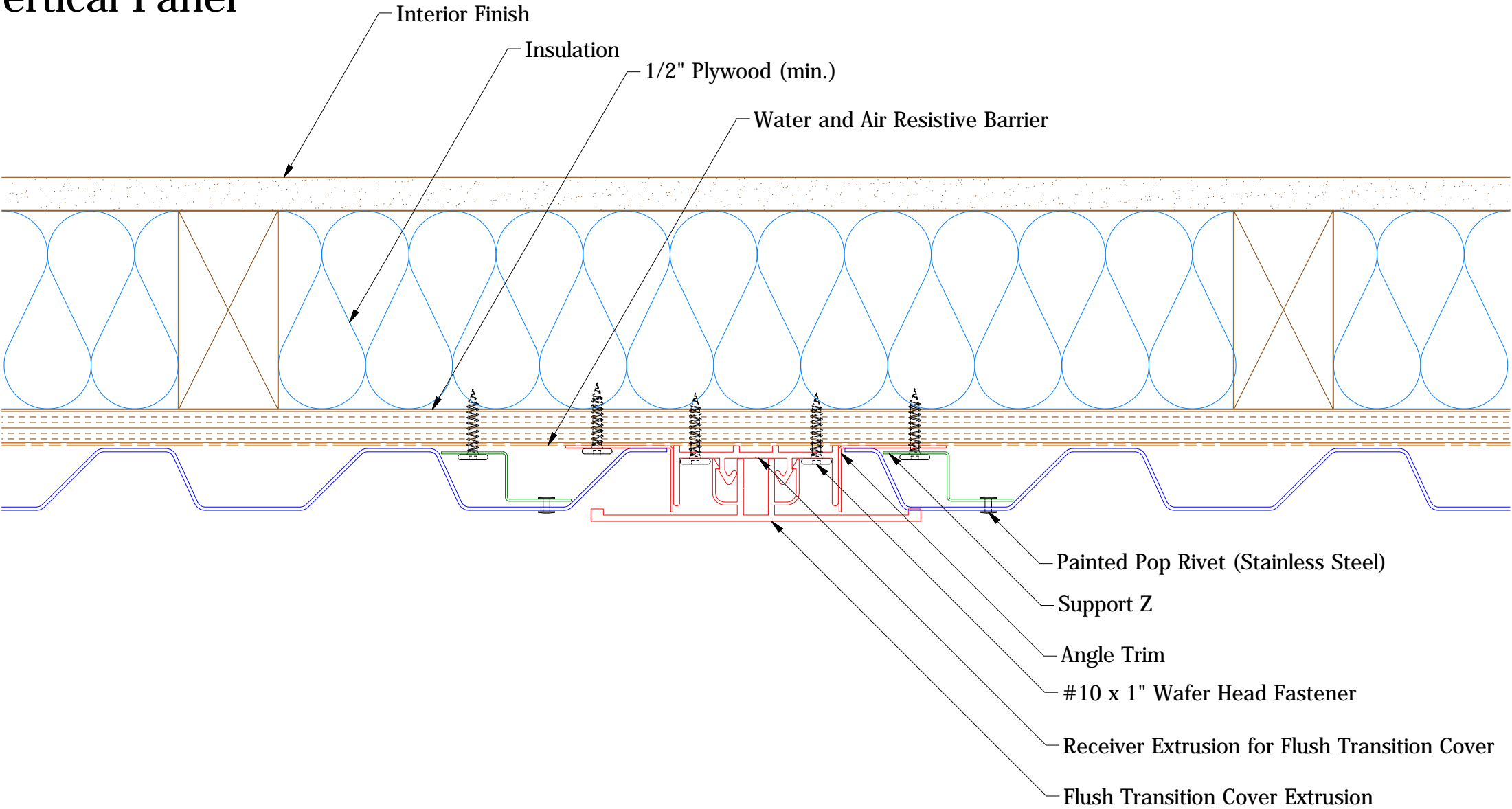
Vertical Panel



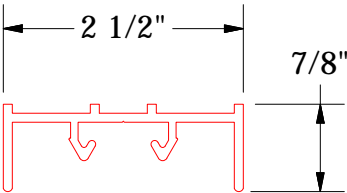
Elite Base Trim

Note: * denotes color side.

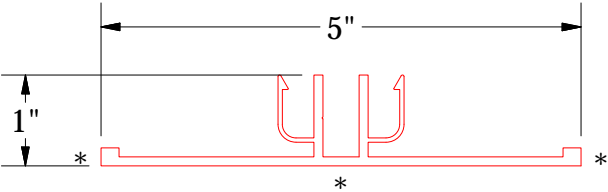
Vertical Panel



MCA680 - Angle Trim

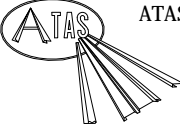


MAY902 - Receiver Extrusion for Flush Transition Cover



MAY102 - Flush Transition Cover Extrusion

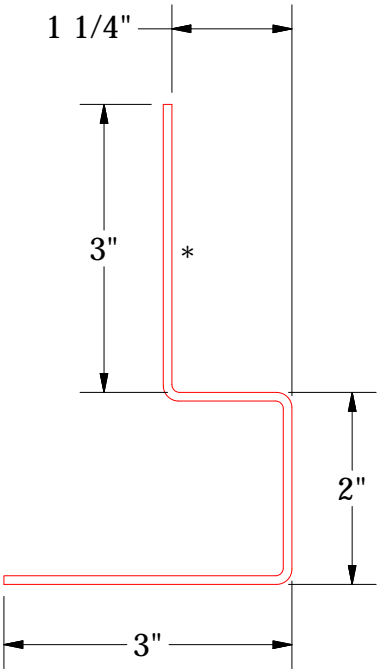
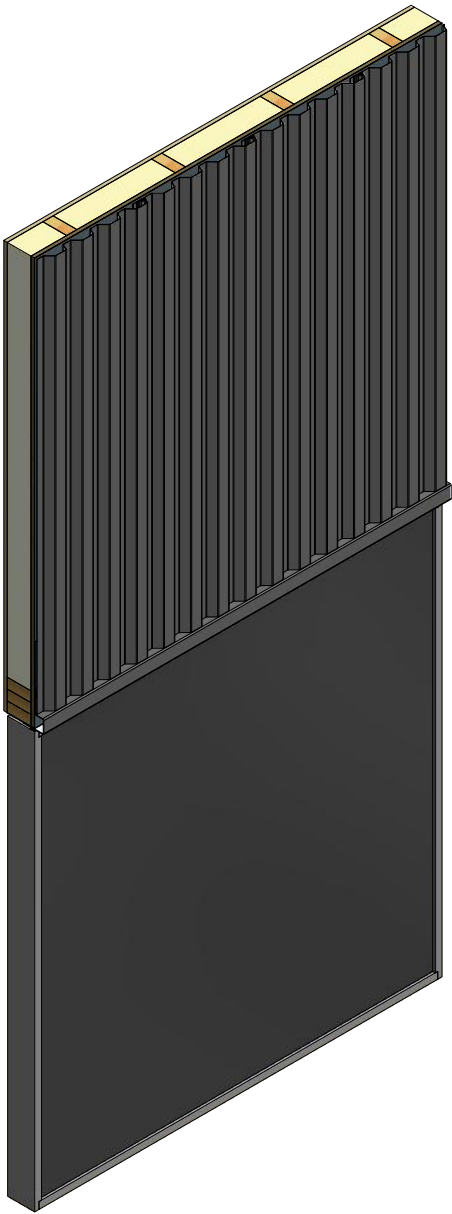
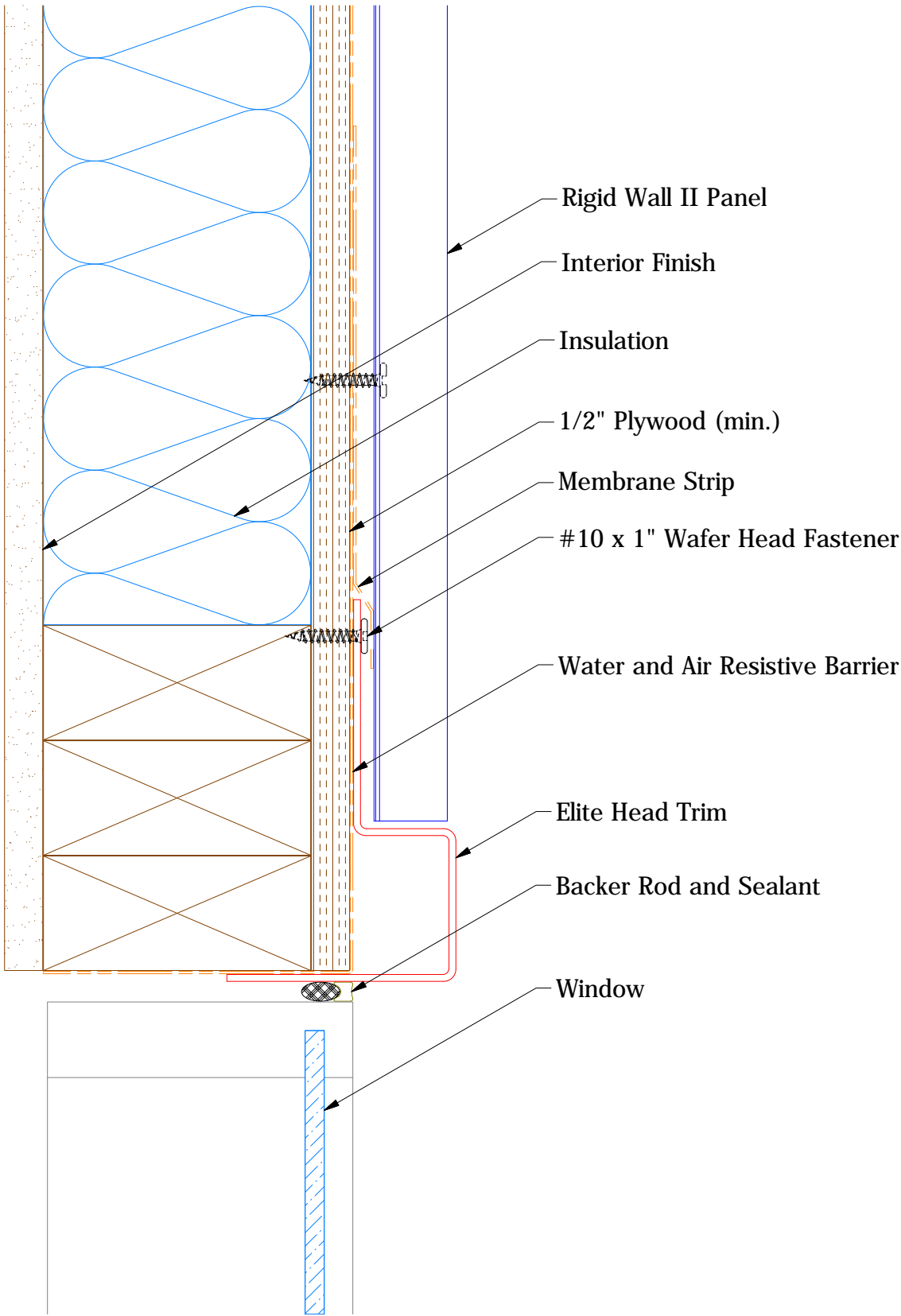
Note: * denotes color side.



ATAS INTERNATIONAL, INC
Allentown PA
610-395-8445
Mesa AZ
480-558-7210

TITLE Rigid Wall II Extruded Flush Detail			
DWG. NO.		DR DMR	DATE 2/7/2019
MATERIAL		APP	DATE
REV. NO.	DATE	DESCRIPTION OF REVISION	BY APP
SH. SIZE B		SCALE X:X	

Vertical Panel

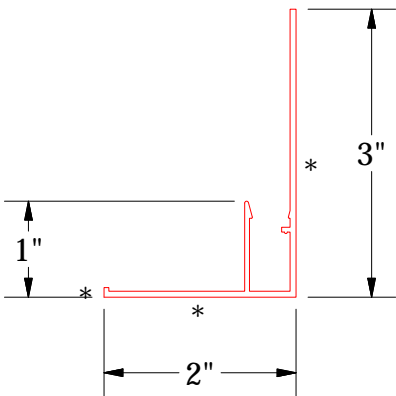
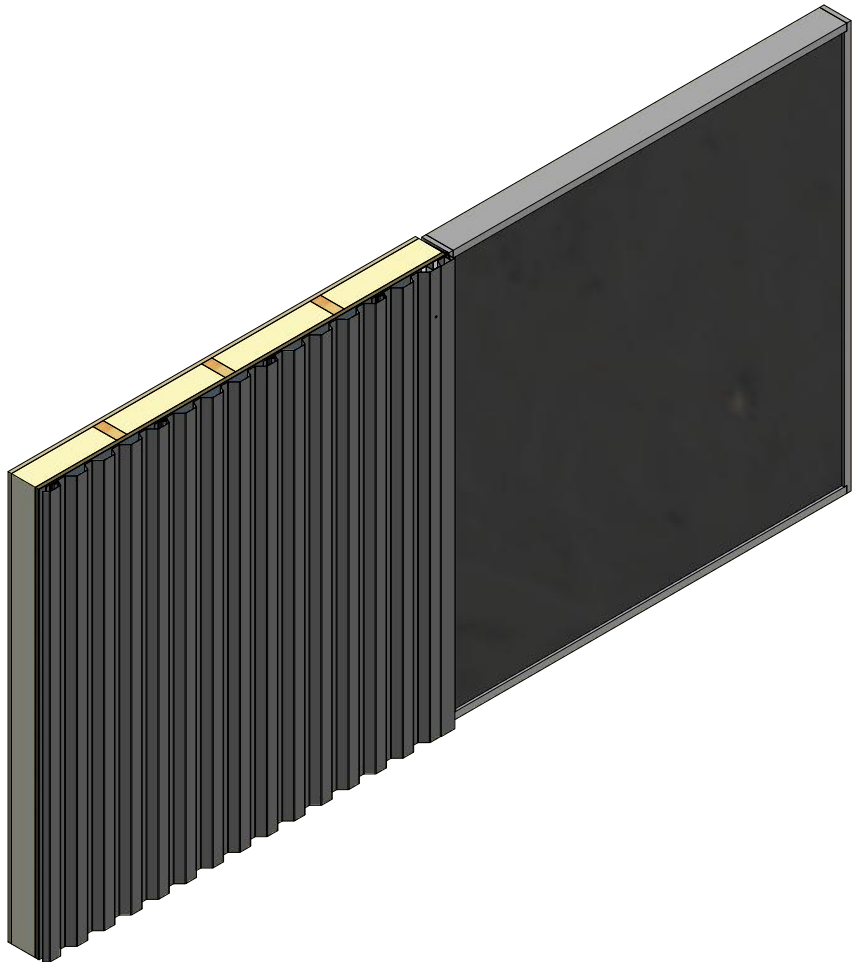
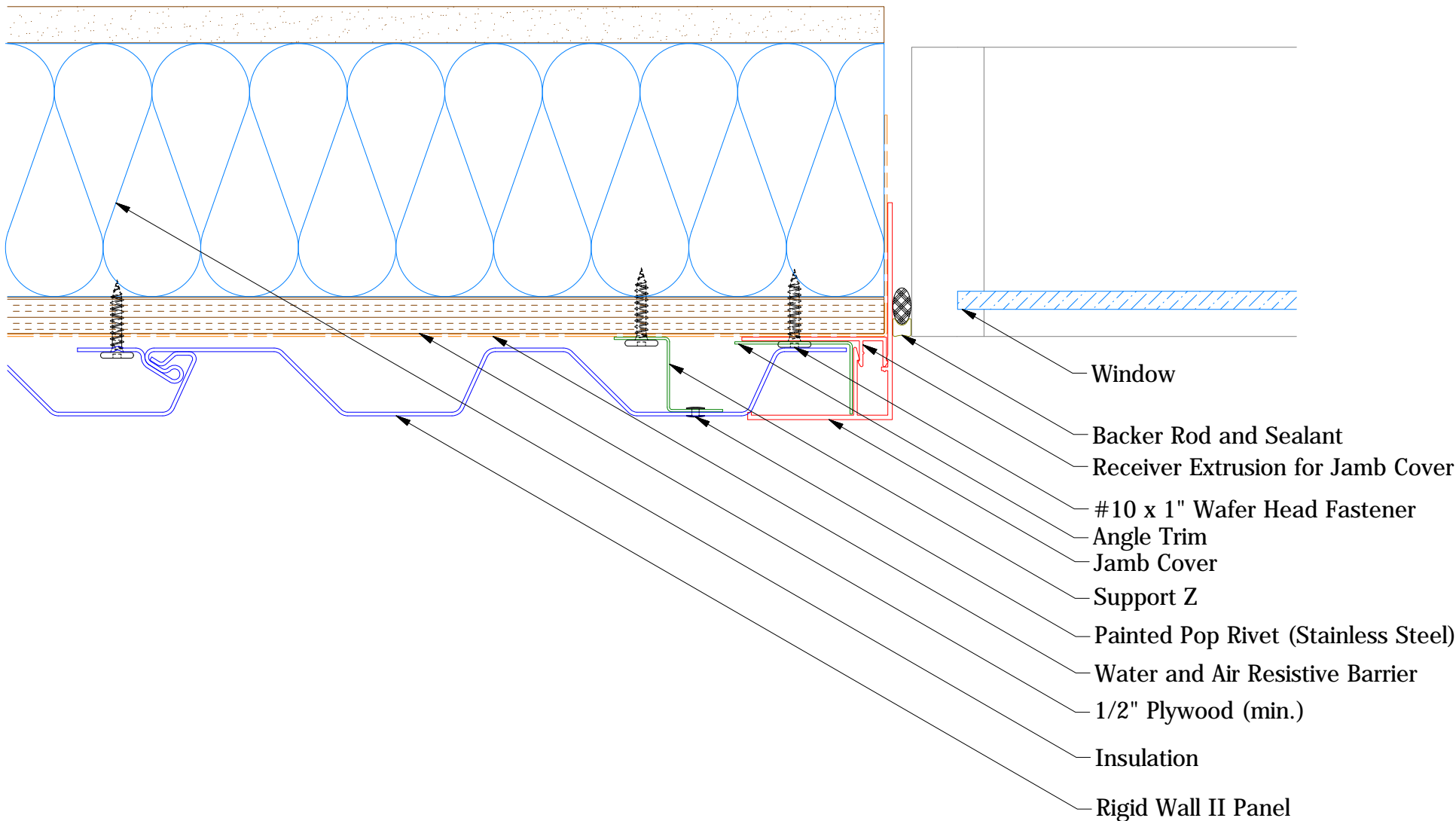


Elite Head Trim

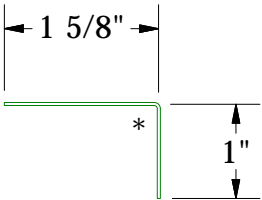
Note: * denotes color side.

								Rigid Wall II Elite Head Detail	
						DWG. NO.		DR DMR	DATE 2/1/2019
						MATERIAL		APP	DATE
REV. NO.	DATE	DESCRIPTION OF REVISION		BY	APP			SH. SIZE B	SCALE X:X

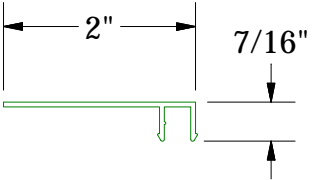
Vertical Panel



Jamb Cover




Angle Trim



Receiver Extrusion for Jamb Cover

Note: * denotes color side.

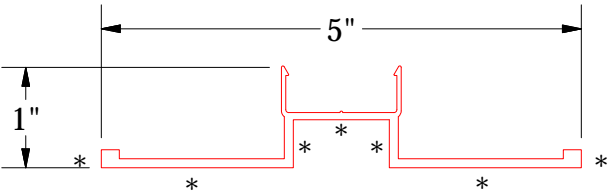
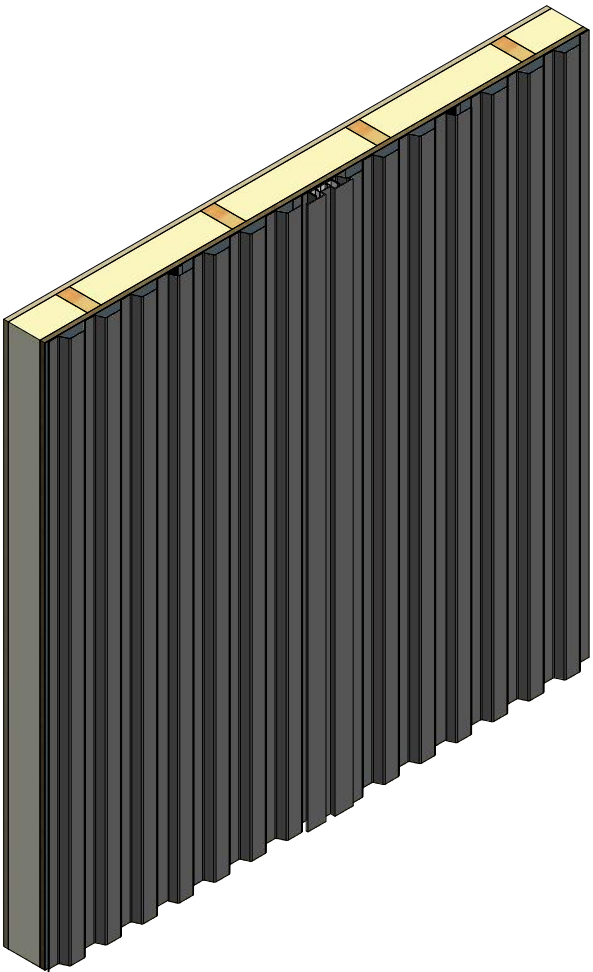
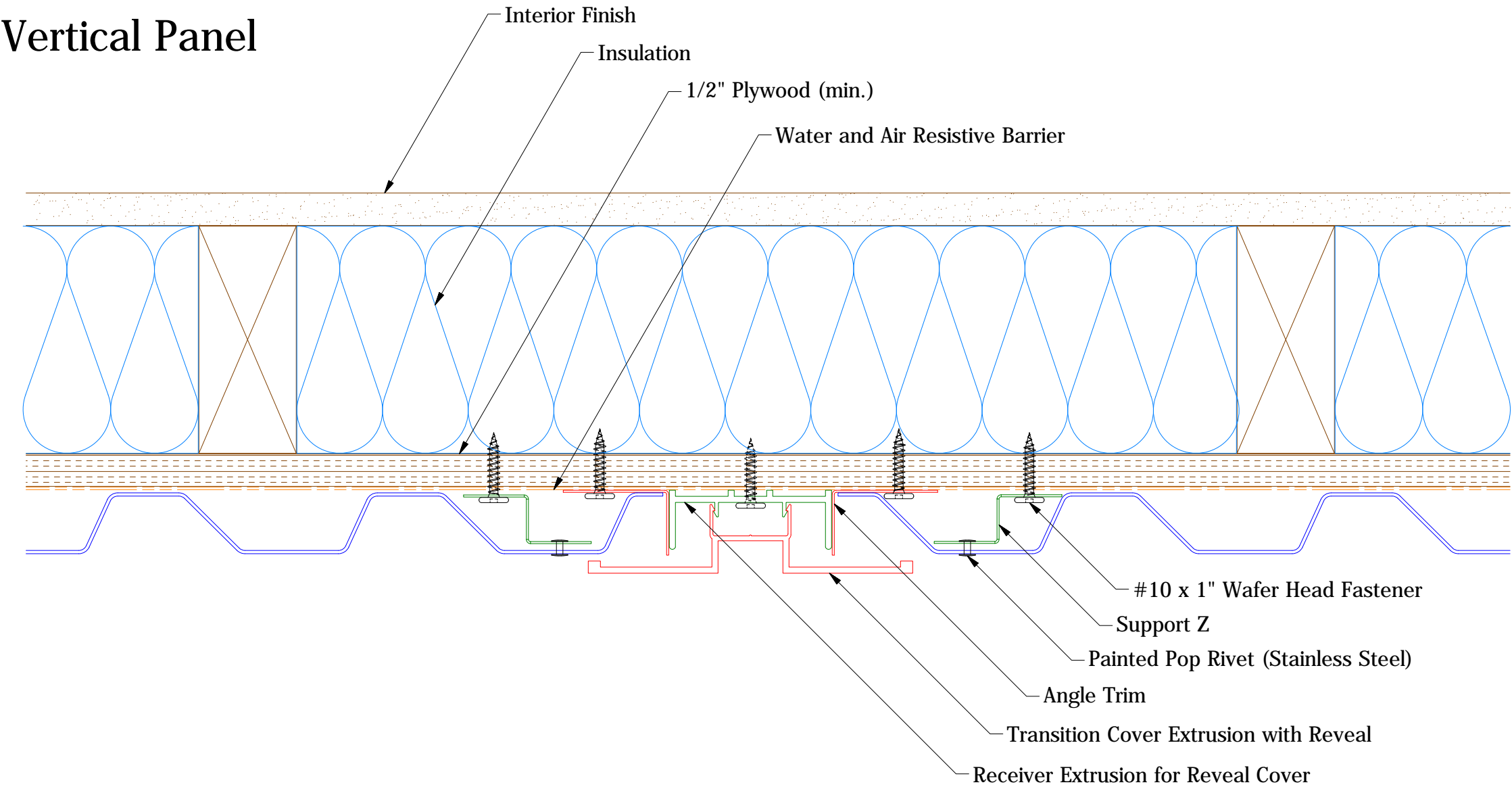


ATAS INTERNATIONAL, INC
Allentown PA
610-395-8445
Mesa AZ
480-558-7210

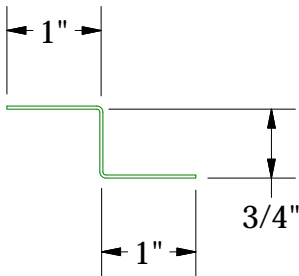
TITLE Rigid Wall II Extruded Jamb Detail			
DWG. NO.		DR DMR	DATE 2/8/2019
MATERIAL		APP	DATE
REV. NO.	DATE	DESCRIPTION OF REVISION	BY APP
SH. SIZE B		SCALE X:X	

REV. NO.	DATE	DESCRIPTION OF REVISION	BY	APP

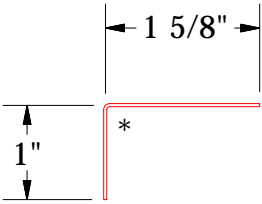
Vertical Panel



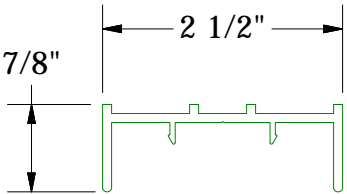
Transition Cover Extrusion with Reveal



Support Z



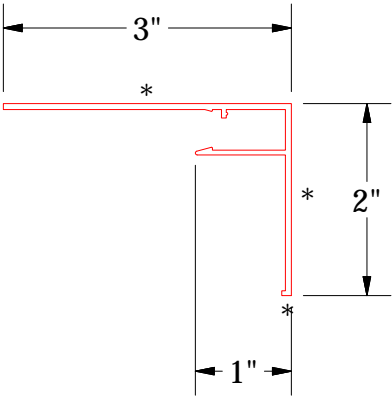
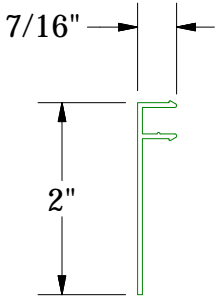
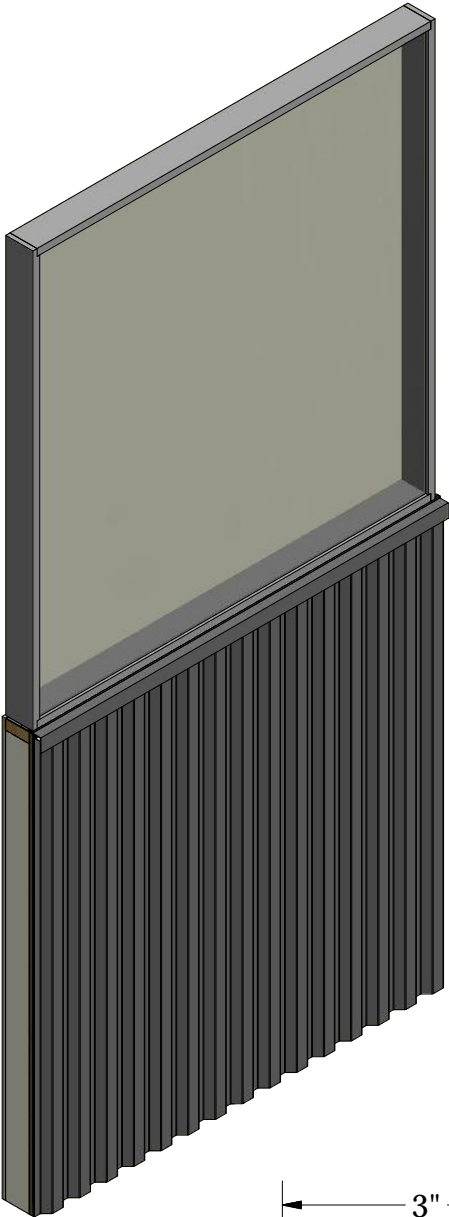
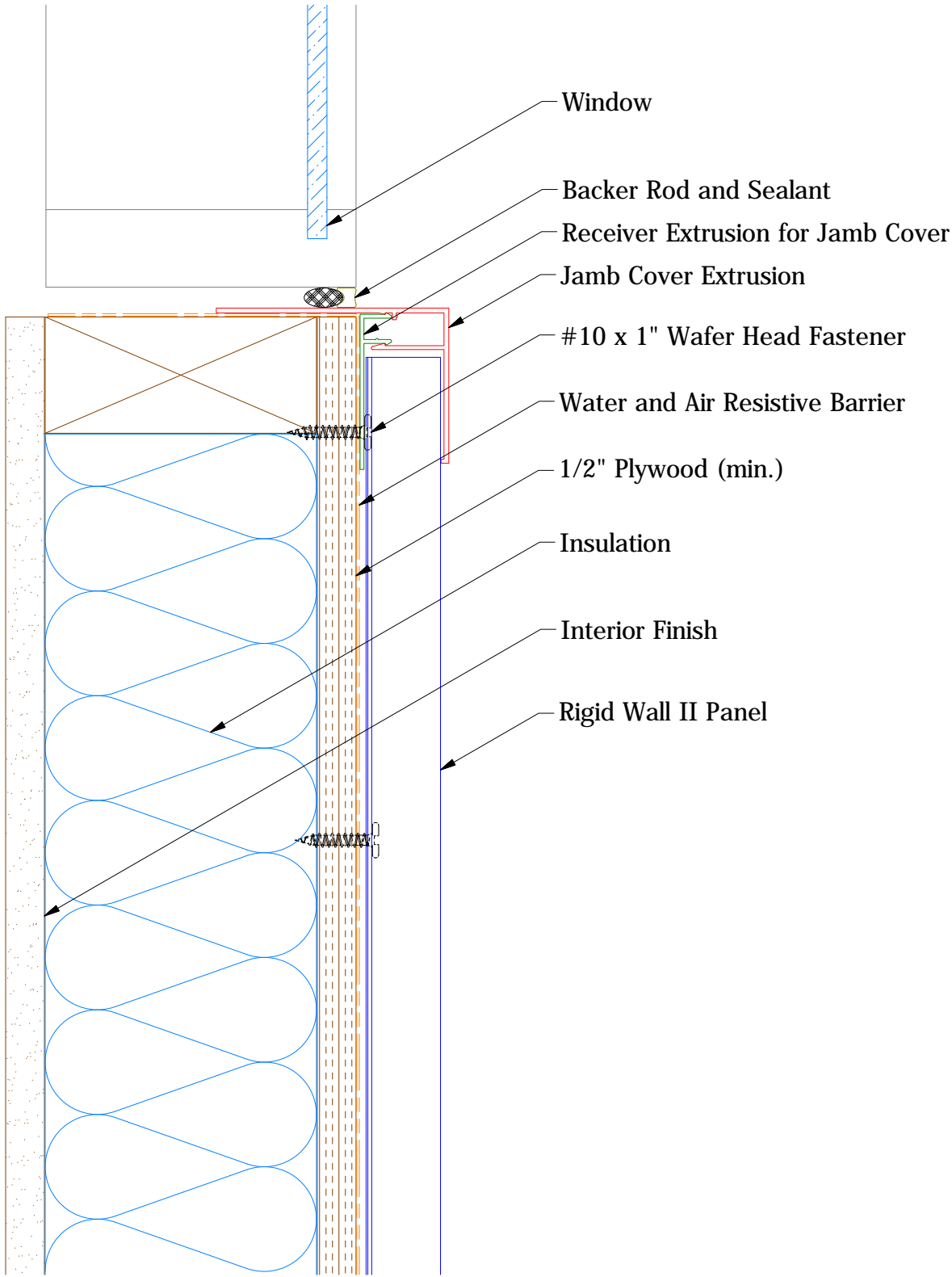
MCA680 - Angle Trim



Receiver Extrusion for Reveal Cover

Note: * denotes color side.

Vertical Panel



Jamb Cover

Receiver Extrusion for Jamb Cover

Note: * denotes color side.
