



# ATAS International, Inc.

Sustainable Building Envelope Technology



Old international styling with modern metal advantages



DURABLE MEETS REMARKABLE

# SCANROOF™

## A resilient panel with **DISTINCTIVE** style.



ScanRoof, a scalloped tile with an international flair, is an easy-to-install metal roof panel. The panels are structural, practical, and economically efficient for any project. ScanRoof is the ideal roof system to stand up against Mother Nature's storms, typhoons, hurricanes, damaging winds and driving rains.

Structural, yet lightweight panel design



### Features

#### APPLICATION

- Typical applications include commercial and residential roofing. ScanRoof is also suitable for mansards
- Installed horizontally from eave to ridge
- ScanRoof is excellent for re-roofing, eliminating the need for tear-off and disposal if conditions and local building codes allow

#### LONGEVITY

- Resistant to high wind, torrential rain, heavy snow and ice loads
- Proven in extreme climate zones for wind resistance
- Fire resistant - will not burn or support combustion
- High quality and time proven painting and pretreatment technologies
- May be an insurance advantage
- Will not warp, crack, rot or peel
- 30 Year Limited Warranty

#### PERFORMANCE STANDARDS

- Environmentally friendly - ENERGY STAR® qualified colors available. Contact ATAS for current color listings
- Tested in accordance with UL 790/ASTM E 108, UL 580, TAS 125, TAS 100, UL 2218, ASTM E 84 Flame Spread, ICBO AC 166 Penetration
- FBC Approval
- MCA Roofing Certification
- Meets all specifications for International Building Code
- High reflectivity of panels which increases energy efficiency

## Specifications

ScanRoof™ SKU: SCP163

### Gauge

24 ga. metallic coated steel

### Panel Width

21" (16 1/2" exposed)

### Panel Length

13'-10" (13'-2" exposed)

### Texture

Smooth

### Finish

Kynar 500® PVDF or Hylar 5000® PVDF

### Colors

27 standard colors

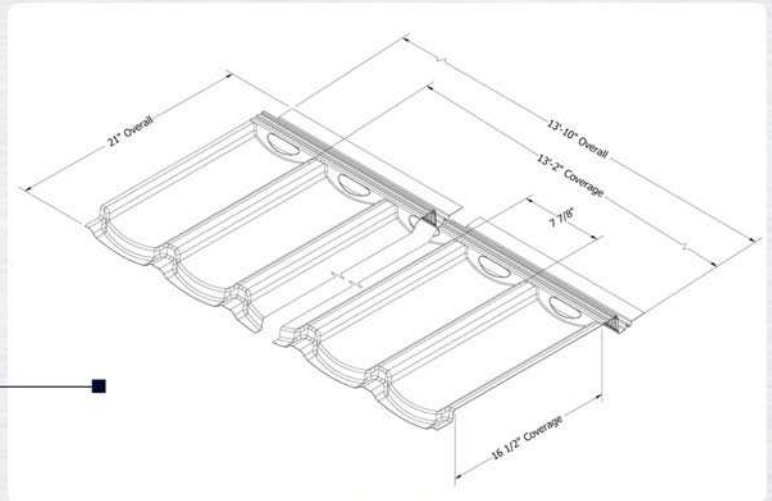
### Accessories

A complete line of trims available in matching colors, gauge, and finish or as specified

### Minimum Slope

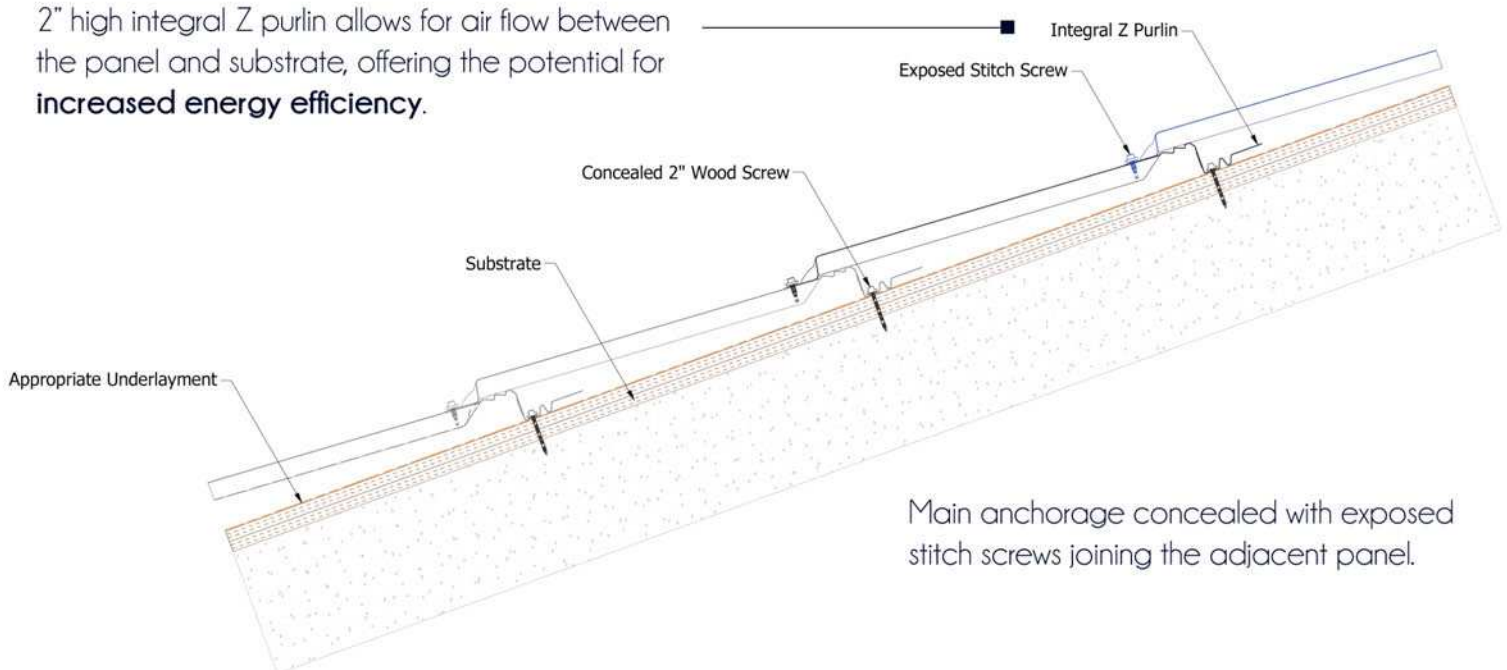
3:12

Installed horizontally from eave to ridge with panels being fully walkable throughout installation.



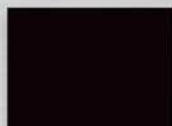
## Installation Advantages

2" high integral Z purlin allows for air flow between the panel and substrate, offering the potential for **increased energy efficiency**.



Main anchorage concealed with exposed stitch screws joining the adjacent panel.

## ScanRoof™ Colors



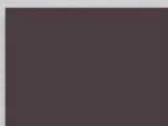
Black (02) SRI: -1



Forest Green (11) SRI: 29



Regal Blue (18) SRI: 23



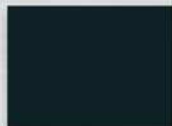
Boysenberry (25) SRI: 27



Sierra Tan (09) SRI: 37



Bone White (26) SRI: 85



Classic Bronze (01) SRI: 2



Hemlock Green (30) SRI: 30



Siam Blue (14) SRI: 35



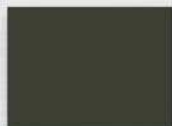
Redwood (07) SRI: 18



Dove Grey (13) SRI: 58



Ascot White (10) SRI: 96



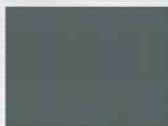
Medium Bronze (03) SRI: 33



Patina Green (12) SRI: 47



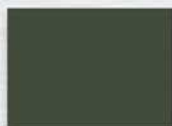
Slate Blue (21) SRI: 31



Charcoal Grey (62) SRI: 27



Sandstone (06) SRI: 66



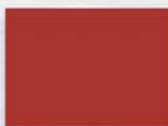
Chocolate Brown (04) SRI: 25



Mint Green (22) SRI: 37



Rocky Grey (16) SRI: 29



Mission Red (08) SRI: 33



Concord Cream (05) SRI: 78



Hartford Green (27) SRI: 23



Teal (19) SRI: 26



Slate Grey (20) SRI: 39



Rawhide (15) SRI: 64

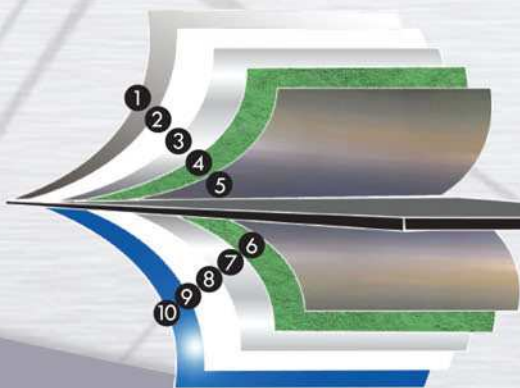


Acrylic Coated Galvalume® (97) SRI: 58



Colors are as close to the actual colors as modern printing allows. If you have requirements or preference for colors or finishes other than shown, contact ATAS. Color availability varies by material, gauge and profile. ATAS is not responsible for colors selected from this chart. Contact ATAS for more information. ENERGY STAR® is only valid for projects located within the United States.

## 55% Al-Zn Coated Steel Paint Coating System



Composed of 10 layers, each developed to protect and strengthen the ScanRoof™ profile.

1. Kynar 500® or Hylar 5000® PVDF Top Coat
2. Compatible Primer
3. Chrome Final Rinse
4. Zinc Phosphate Pretreatment
5. AZ50 Aluminum-Zinc Coating
- 24 Gauge Steel**
6. AZ50 Aluminum-Zinc Coating
7. Zinc Phosphate Pretreatment
8. Chrome Final Rinse
9. Compatible Primer
10. Wash Coat



## ATAS International, Inc.

Allentown, PA ▪ Mesa, AZ ▪ Maryville, TN  
 800.468.1441 | [www.atas.com](http://www.atas.com) | [info@atas.com](mailto:info@atas.com)



© 2015 ATAS International, Inc.

Contact ATAS for more information. ATAS reserves the right to modify, eliminate and/or change its products without prior notification.

LRD0315 LAT170