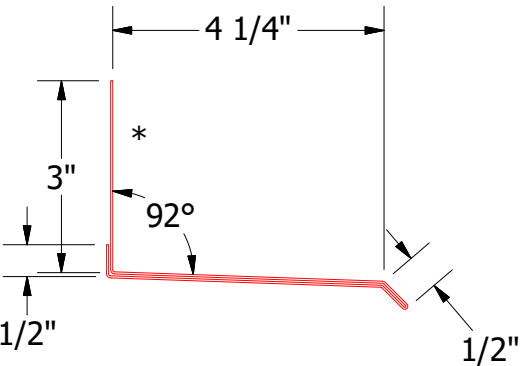
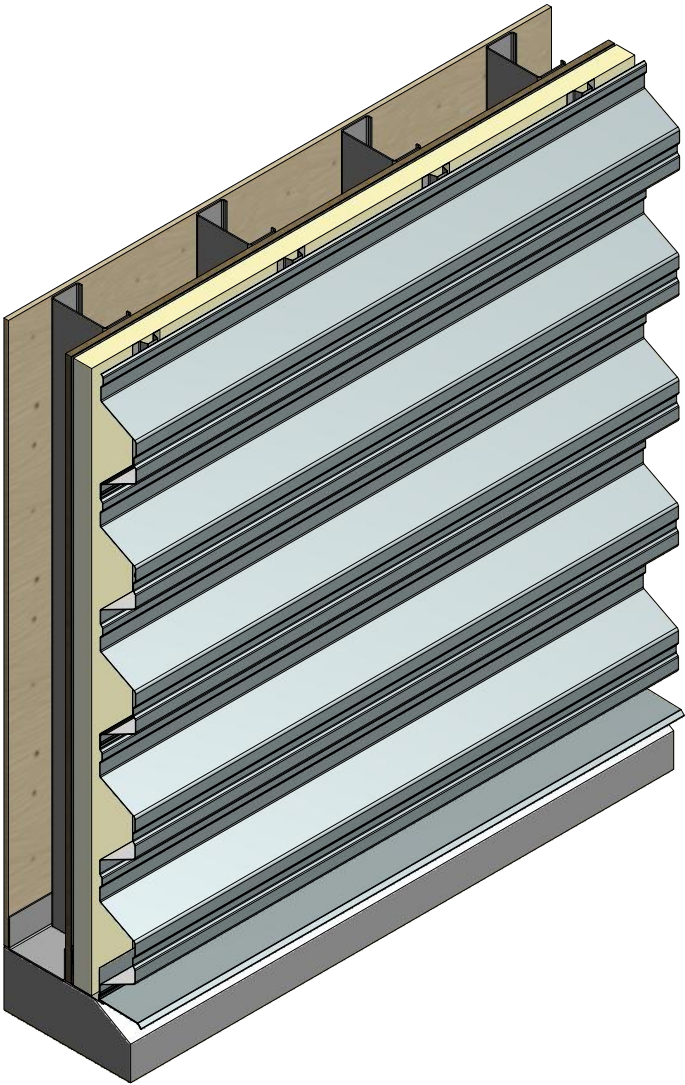
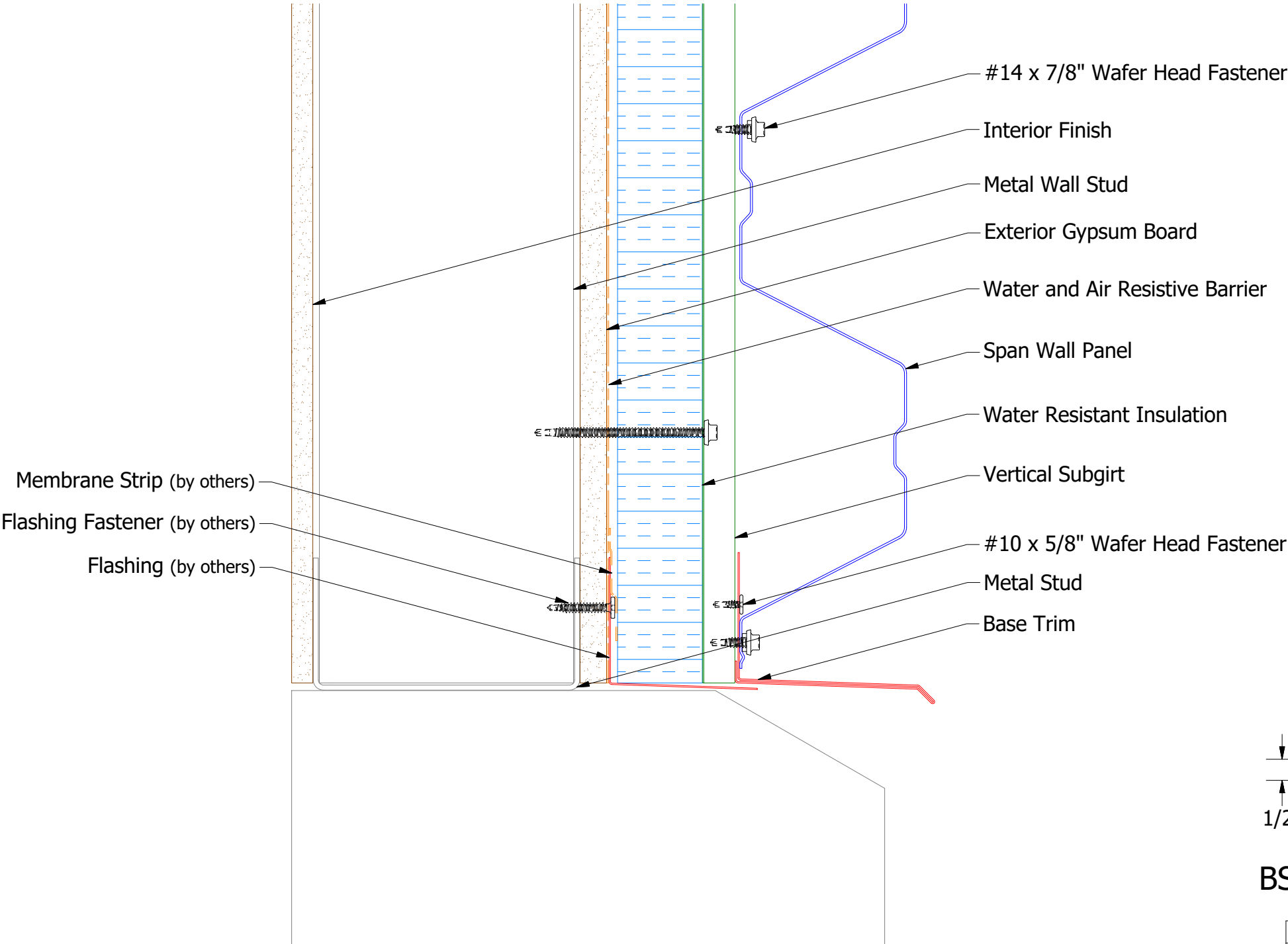


ATAS INTERNATIONAL, INC
Allentown PA
610-395-8445
Mesa AZ
480-558-7210


					Span Wall Panel Detail			
					DWG. NO.		DR	DATE
							DMR	12/16/2016
					MATERIAL		APP	DATE
REV. NO.	DATE	DESCRIPTION OF REVISION	BY	APP			SH. SIZE	SCALE
							B	X:X

Horizontal Panel

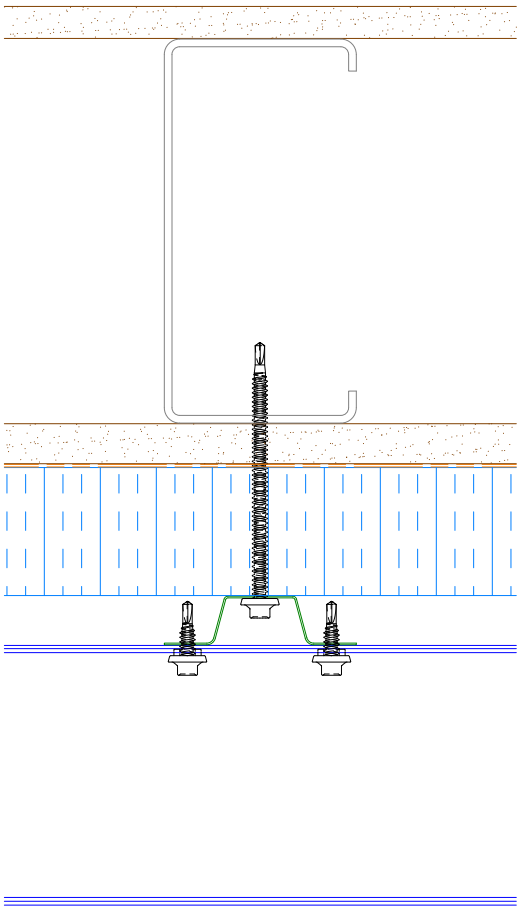
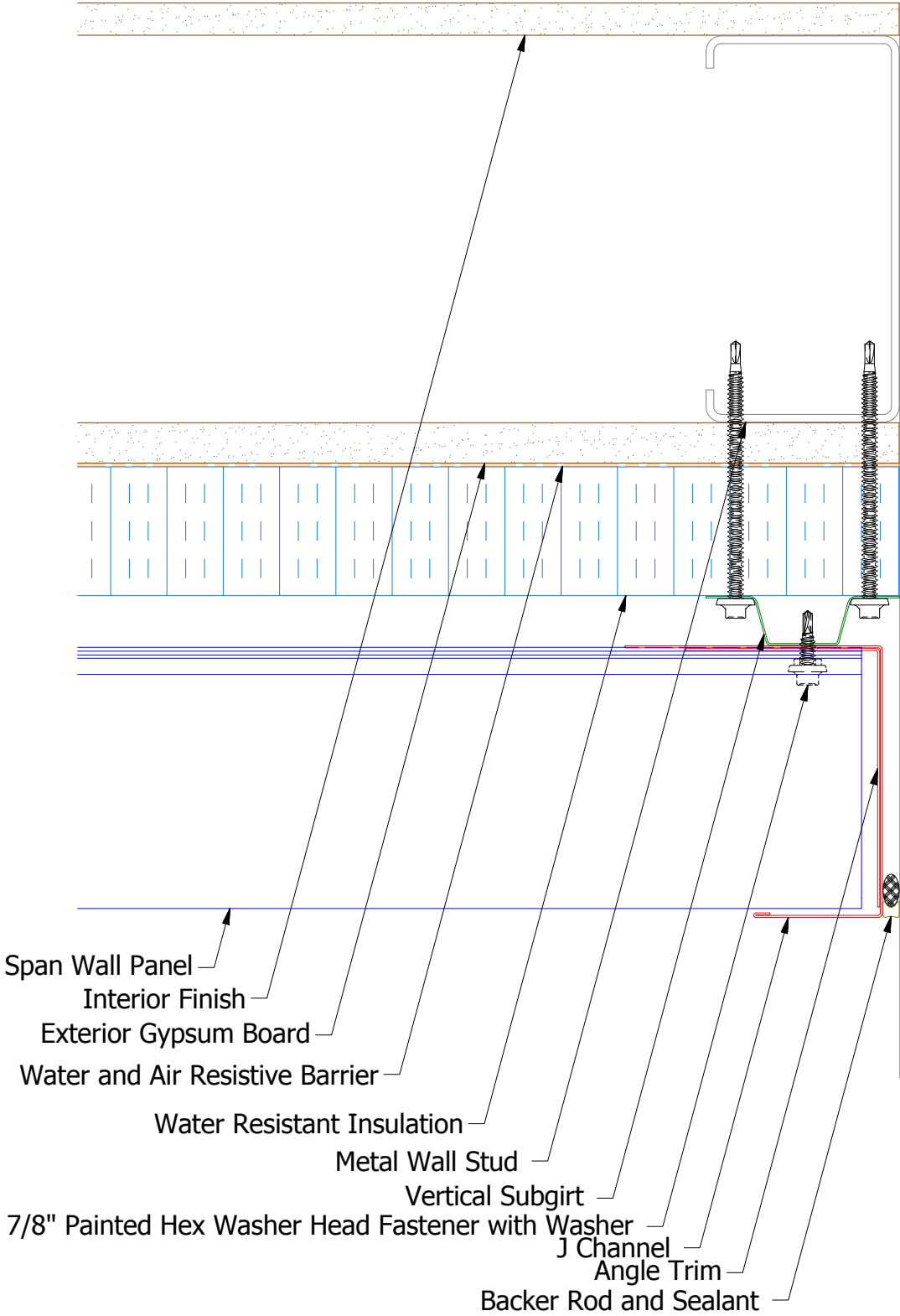


BSA661-Base Trim Standard

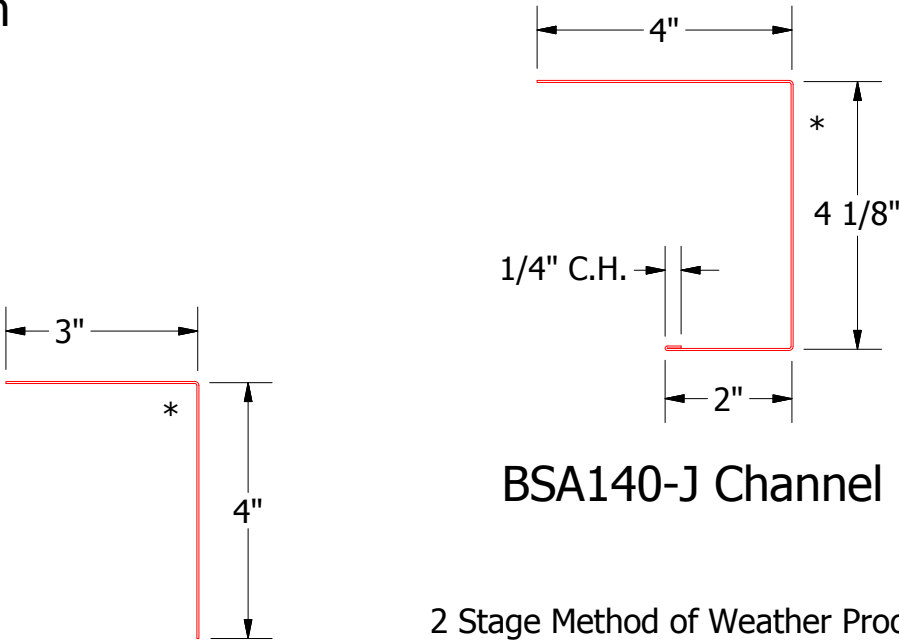
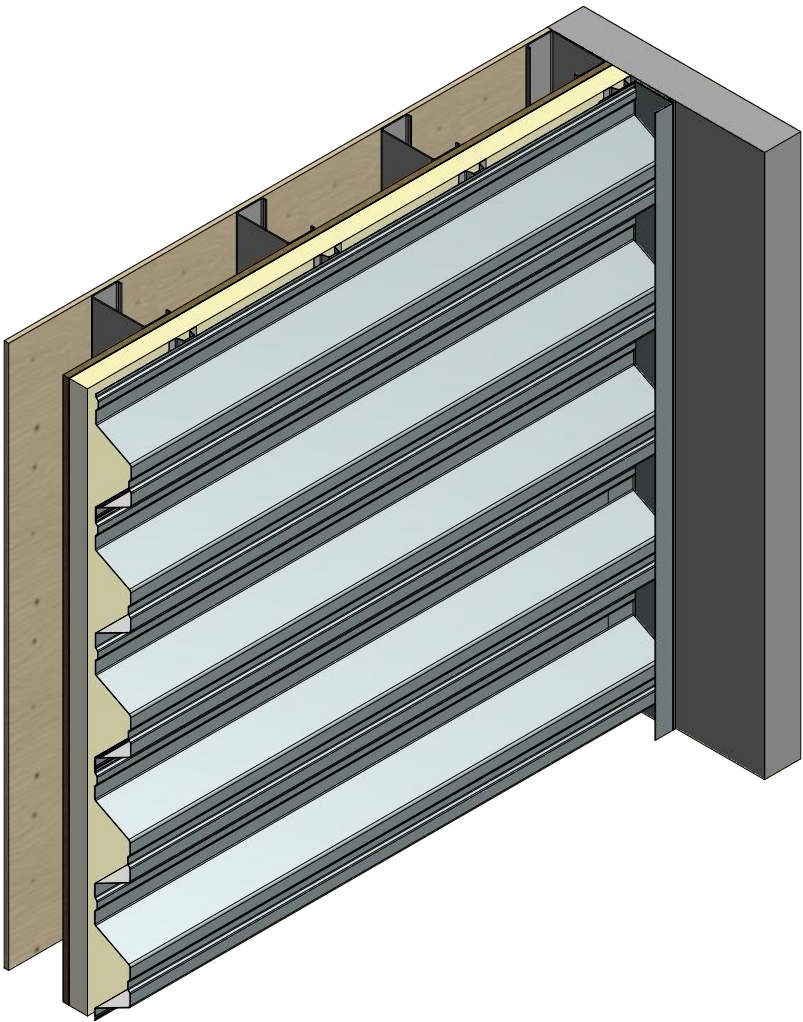
2 Stage Method of Weather Proofing

			ATAS INTERNATIONAL, INC Allentown PA 610-395-8445 Mesa AZ 480-558-7210		
TITLE Span Wall Panel Base Detail					
DWG. NO.			DR	KRK	DATE 3/3/2015
MATERIAL			APP		DATE
			SH. SIZE	B	SCALE X:X

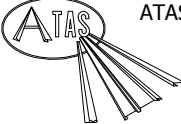
Horizontal Panel



Alternate Subgirt Orientation



2 Stage Method of Weather Proofing

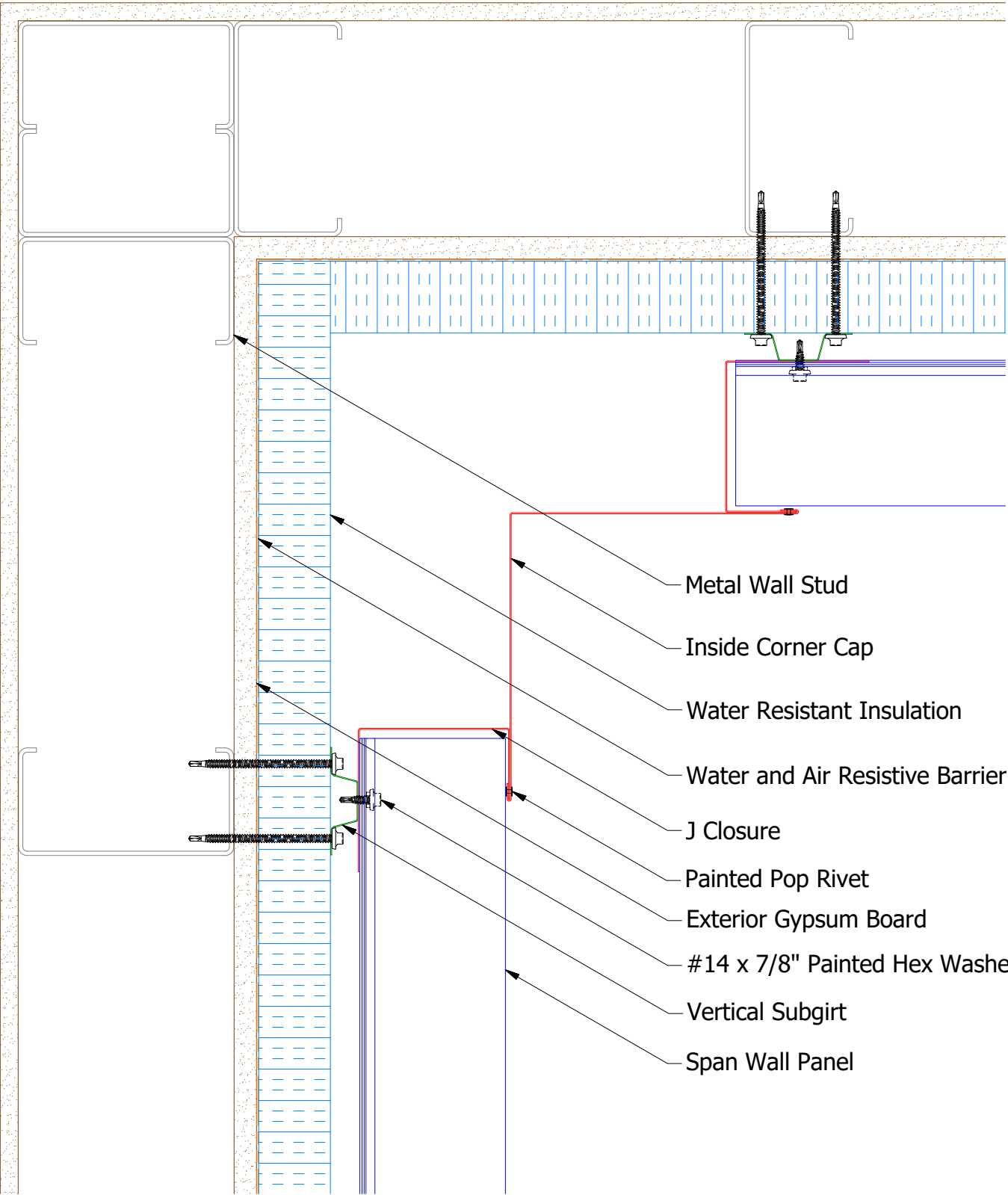


ATAS INTERNATIONAL, INC
Allentown PA
610-395-8445
Mesa AZ
480-558-7210

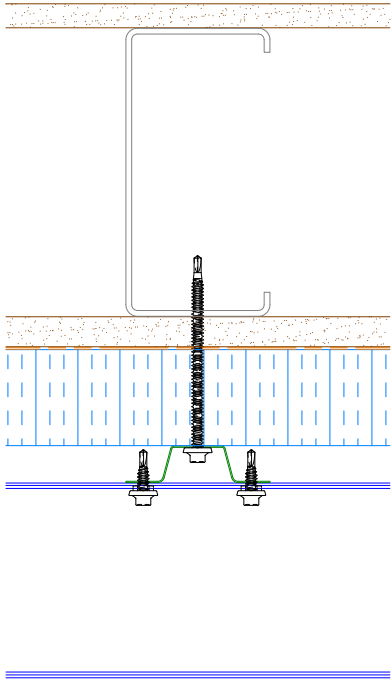
TITLE Span Wall Panel Endwall Detail			
DWG. NO.		DR KRK	DATE 3/5/2015
MATERIAL		APP	DATE
REV. NO.	DATE	DESCRIPTION OF REVISION	BY APP
SH. SIZE B		SCALE X:X	

REV. NO.	DATE	DESCRIPTION OF REVISION	BY	APP	

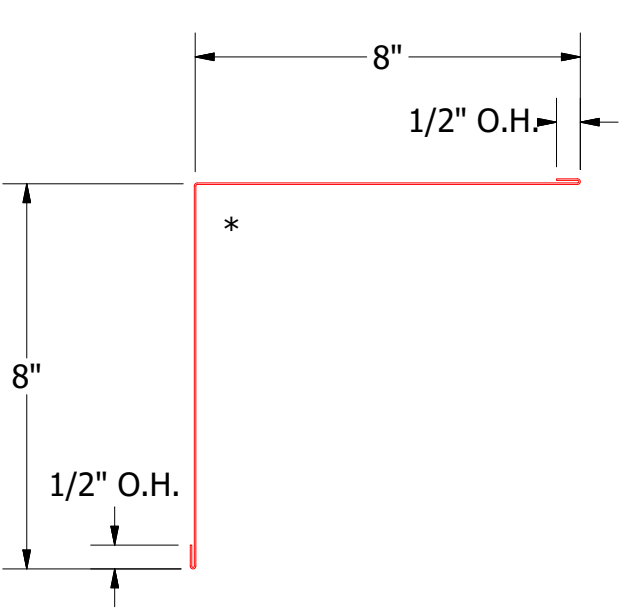
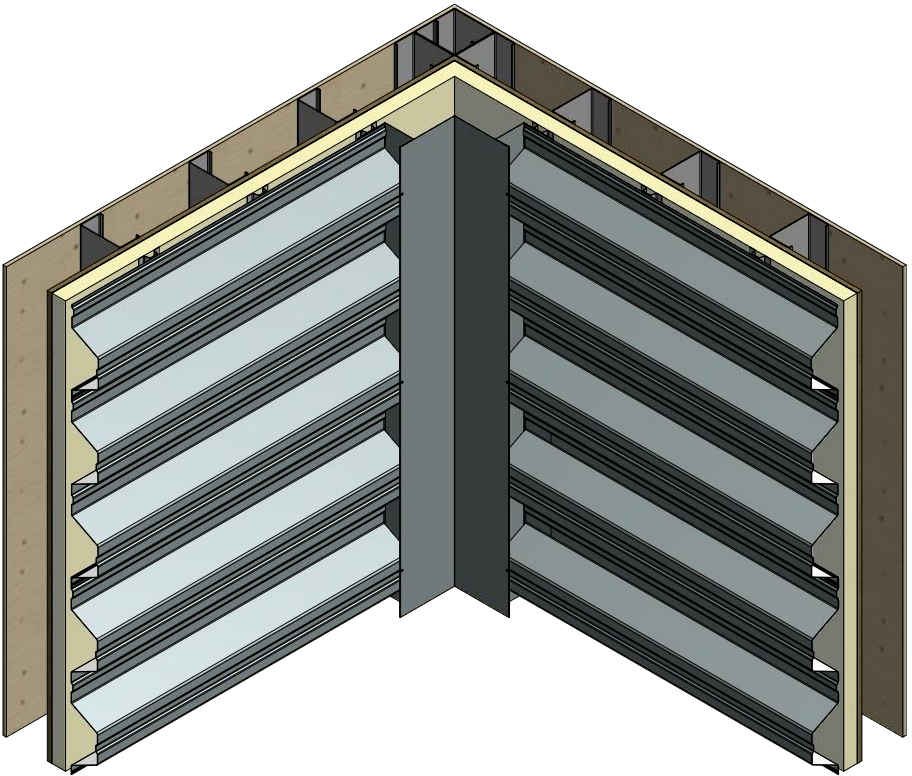
Horizontal Panel



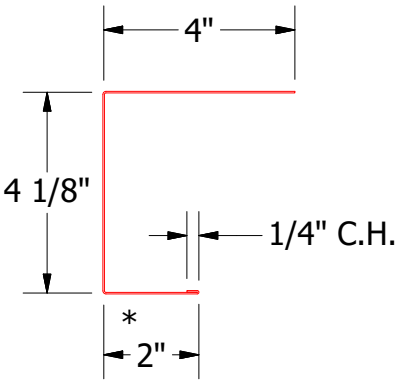
- Metal Wall Stud
- Inside Corner Cap
- Water Resistant Insulation
- Water and Air Resistive Barrier
- J Closure
- Painted Pop Rivet
- Exterior Gypsum Board
- #14 x 7/8" Painted Hex Washer Head Fastener with Washer
- Vertical Subgirt
- Span Wall Panel



Alternate Subgirt Orientation

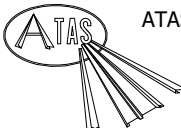


BSA600-Inside Corner Cap



BSA140-J Channel

2 Stage Method of Weather Proofing

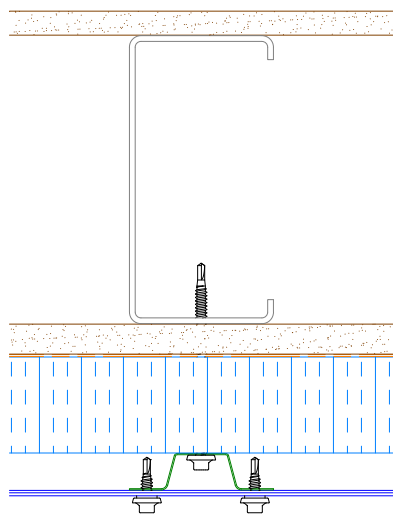


ATAS INTERNATIONAL, INC
Allentown PA
610-395-8445
Mesa AZ
480-558-7210

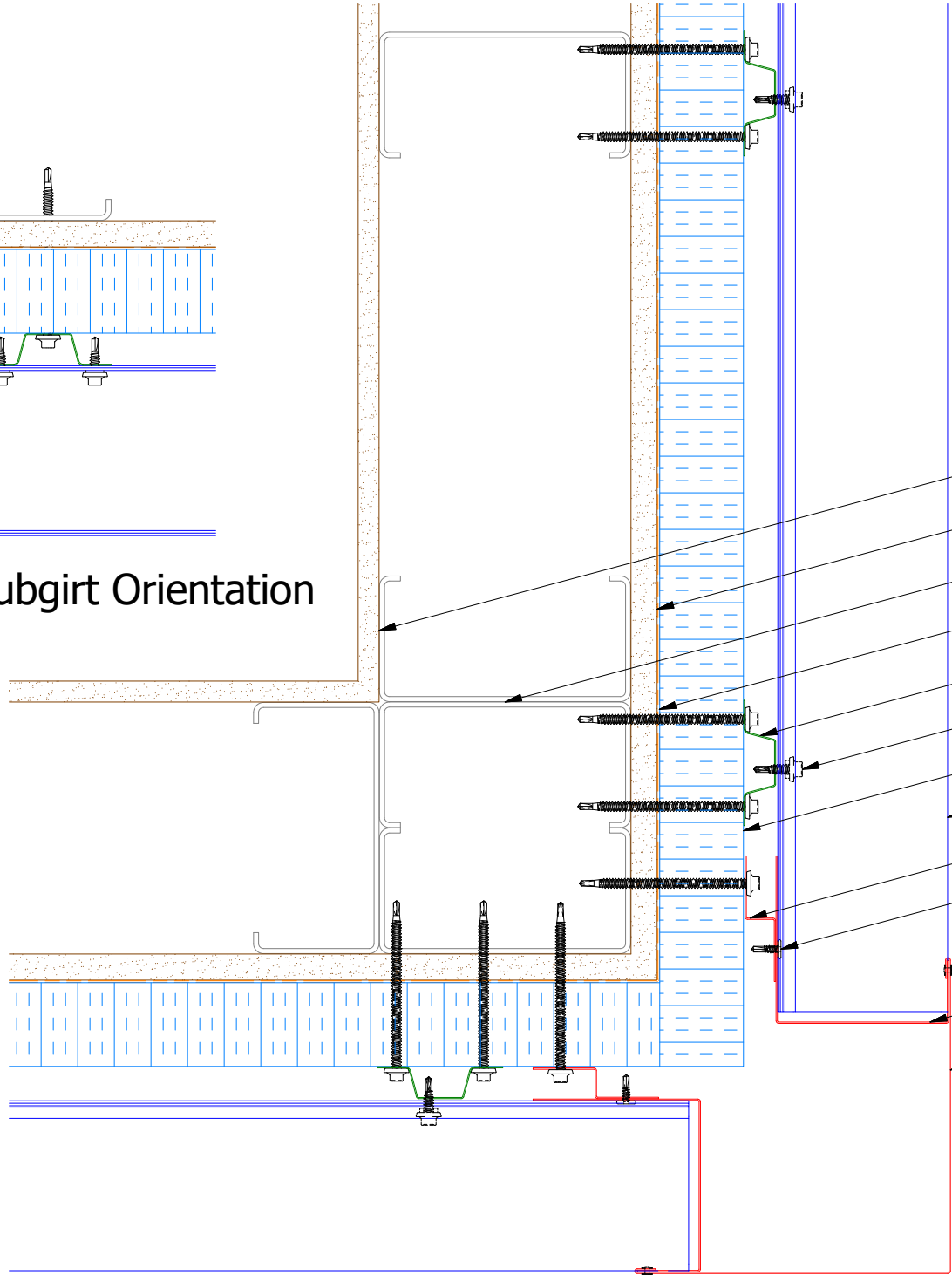
TITLE Span Wall Inside Corner Cap Detail			
DWG. NO.		DR KRK	DATE 3/6/2015
MATERIAL		APP	DATE
REV. NO.	DATE	DESCRIPTION OF REVISION	BY APP
SH. SIZE B		SCALE X:X	

REV. NO.	DATE	DESCRIPTION OF REVISION	BY	APP

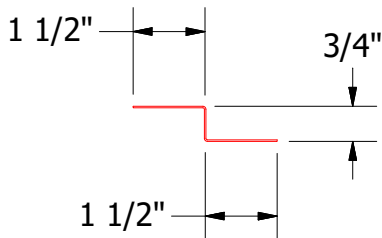
Horizontal Panel



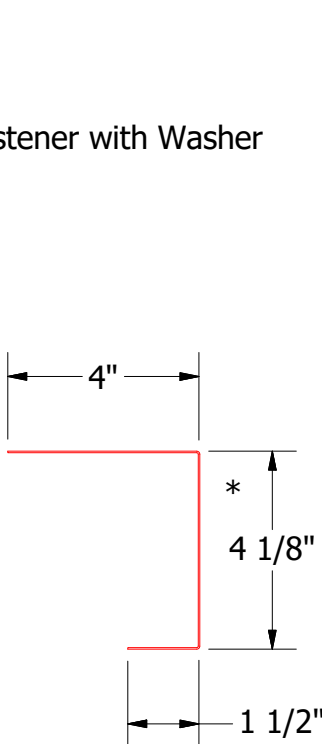
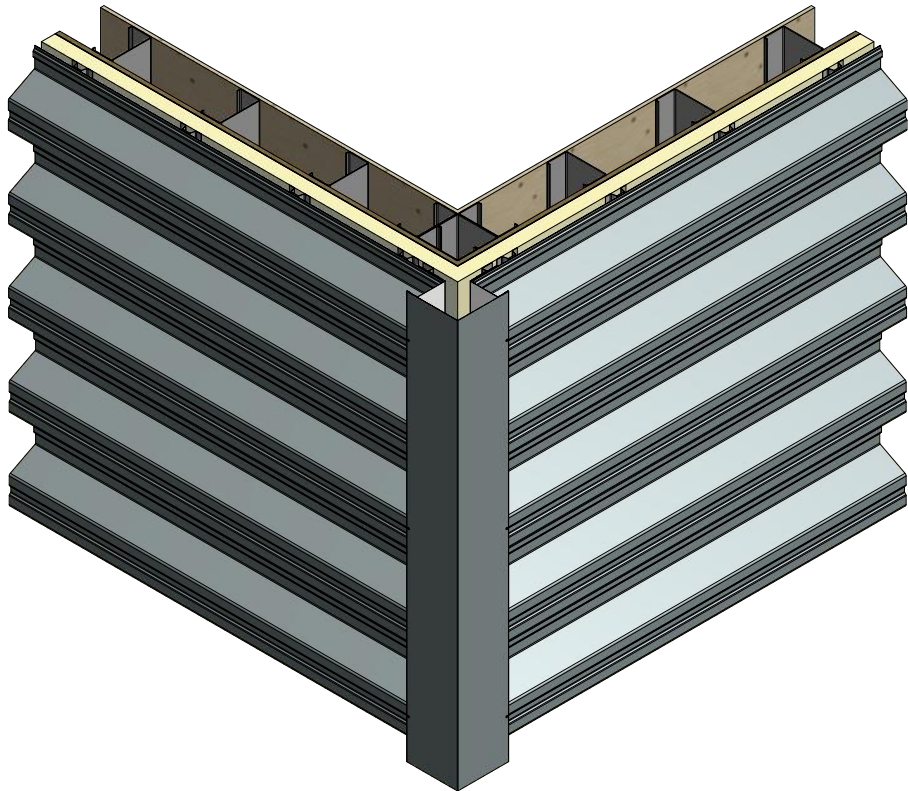
Alternate Subgirt Orientation



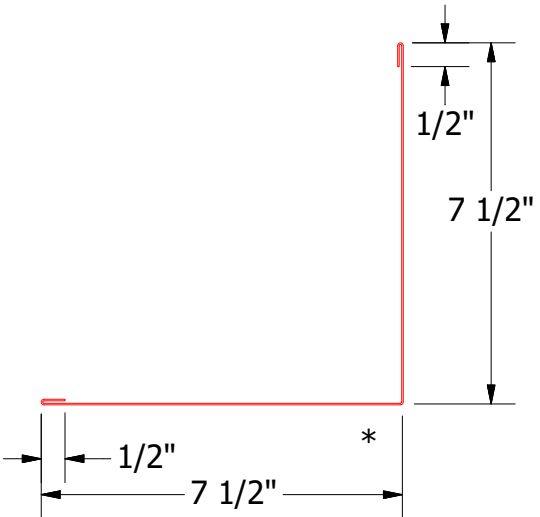
- Interior Finish
- Exterior Gypsum Board
- Metal Wall Stud
- Water and Air Resistive Barrier
- Vertical Subgirt
- #14 x 7/8" Painted Hex Washer Head Fastener with Washer
- Water Resistant Insulation
- Span Wall Panel
- Support Z
- #10 x 5/8" Wafer Head Fastener
- Painted Pop Rivet (Stainless Steel)
- J Closure
- Outside Corner Cap



BSA681-Support Z




BSA270-J Closure



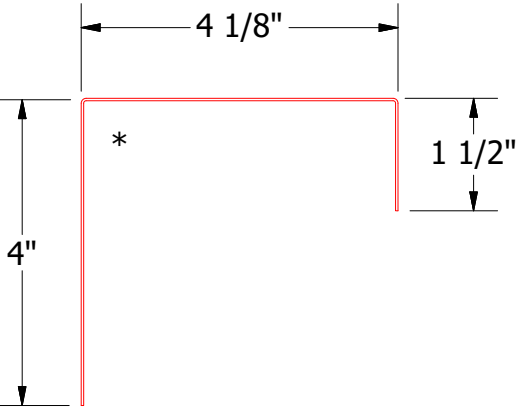
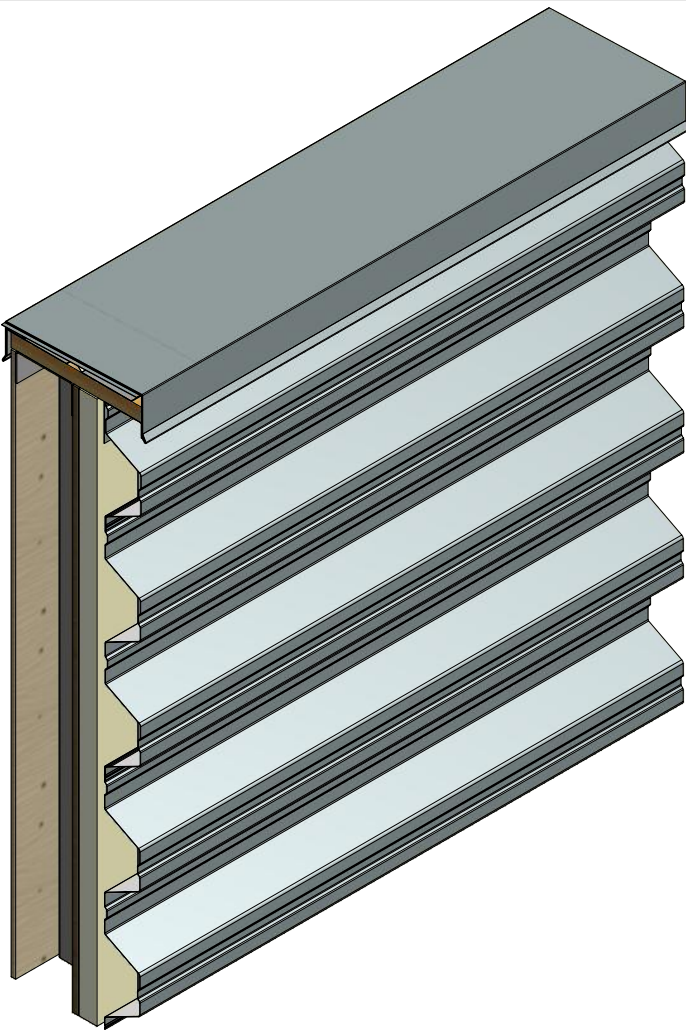
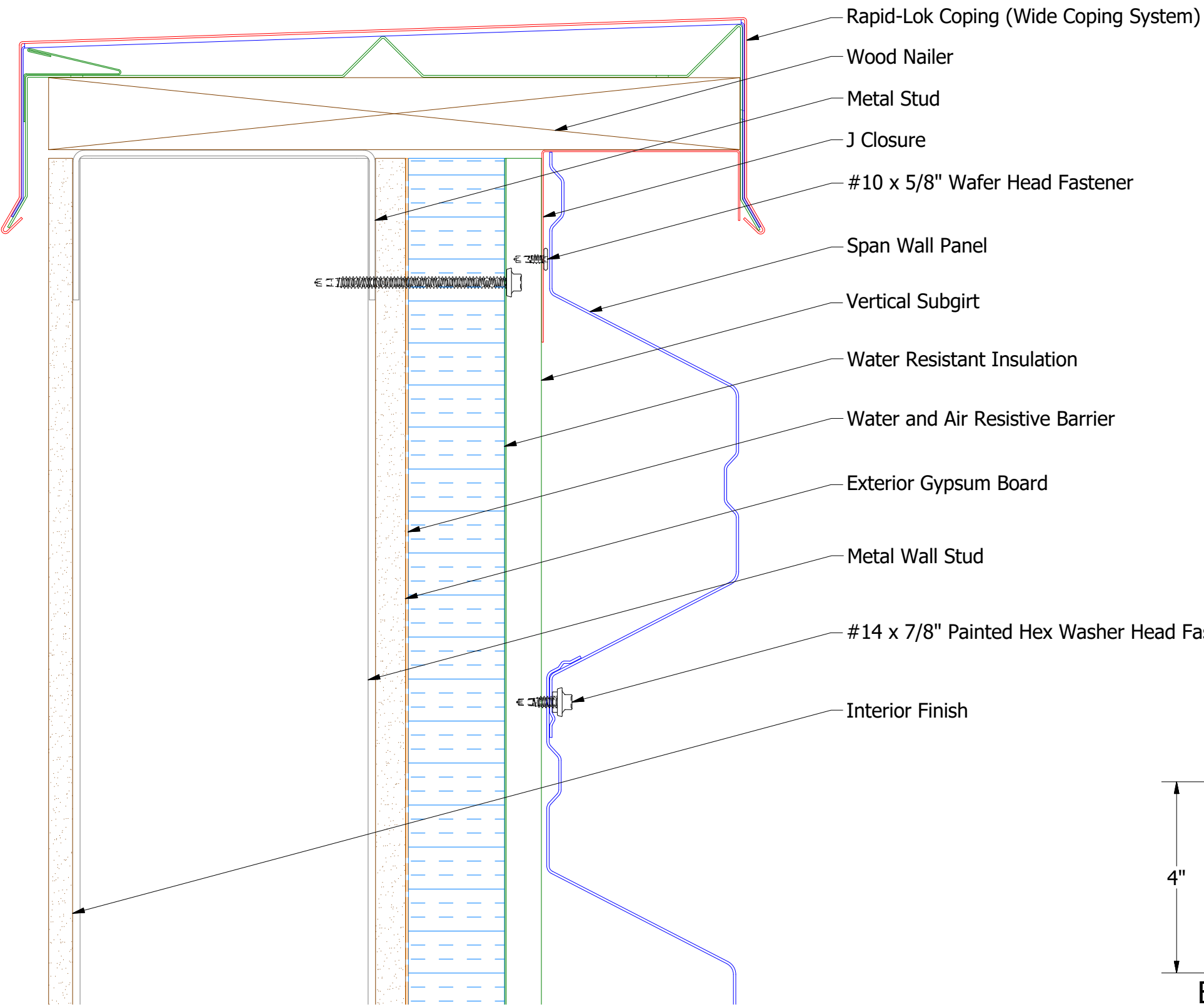
BSA610-Outside Corner Cap

2 Stage Method of Weather Proofing

		ATAS INTERNATIONAL, INC	
		Allentown PA 610-395-8445 Mesa AZ 480-558-7210	
TITLE			
Span Wall Outside Corner Cap Detail			
DWG. NO.		DR	DATE
		KRK	3/6/2015
MATERIAL		APP	DATE
		SH. SIZE	B
		SCALE	X:X

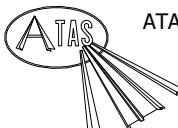
REV. NO.	DATE	DESCRIPTION OF REVISION	BY	APP

Horizontal Panel

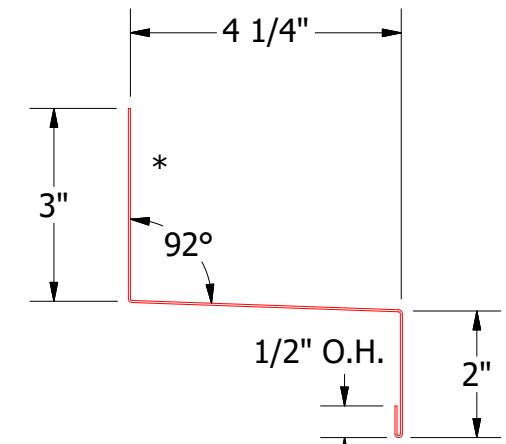
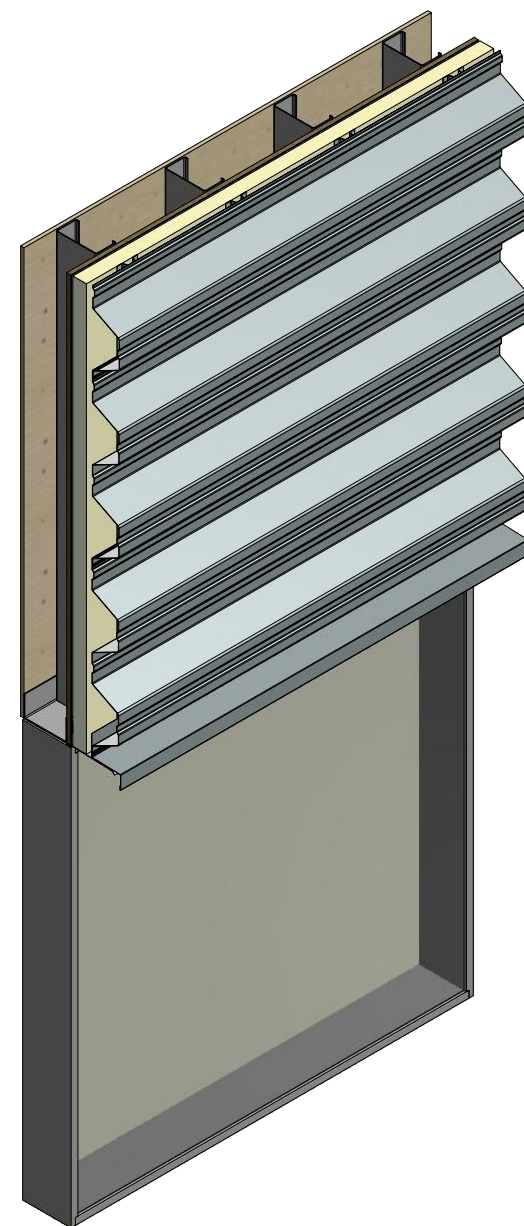
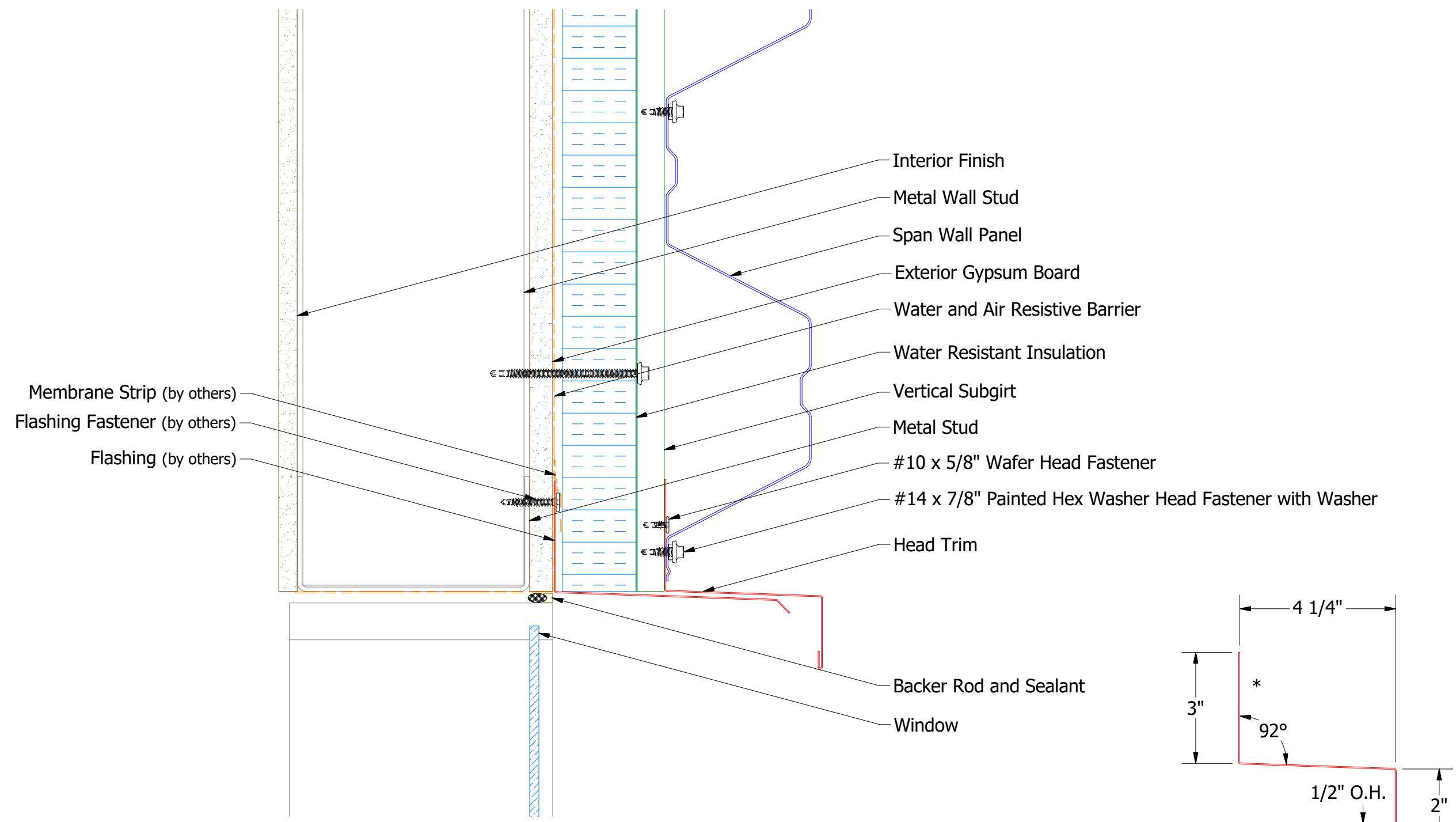


BSA270-J Closure

2 Stage Method of Weather Proofing

		ATAS INTERNATIONAL, INC Allentown PA 610-395-8445 Mesa AZ 480-558-7210	
TITLE Span Wall Top of Wall Detail			
DWG. NO.		DR KRK	DATE 3/9/2015
MATERIAL		APP	DATE
		SH. SIZE B	SCALE X:X

Horizontal Panel



BSA550-Head Trim

2 Stage Method of Weather Proofing

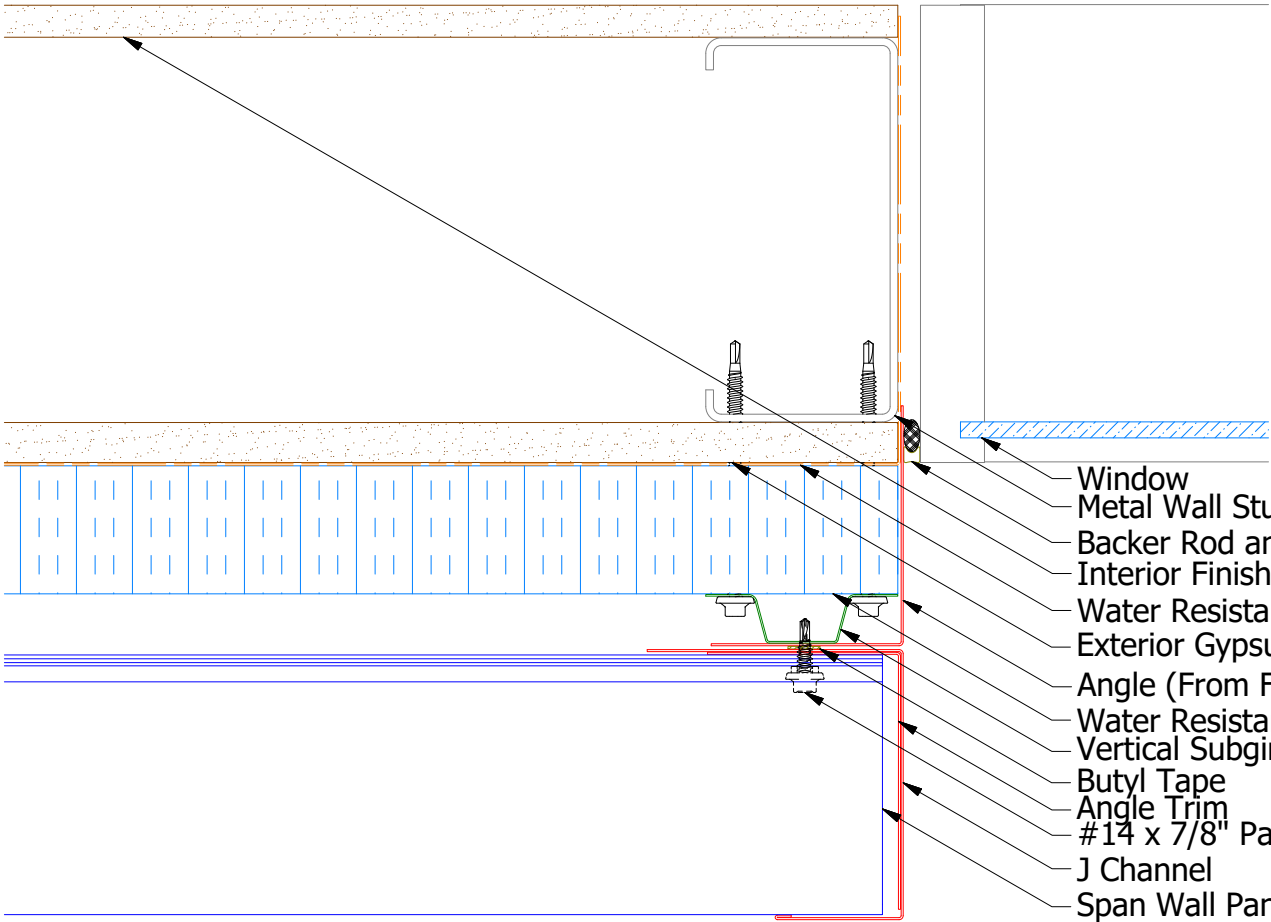


ATAS INTERNATIONAL, INC
Allentown PA
610-395-8445
Mesa AZ
480-558-7210

TITLE			
Span Wall Panel Head Detail			
DWG. NO.		DR	DATE
		KRK	3/6/2015
		APP	DATE
MATERIAL		SH. SIZE	SCALE
		B	X:X

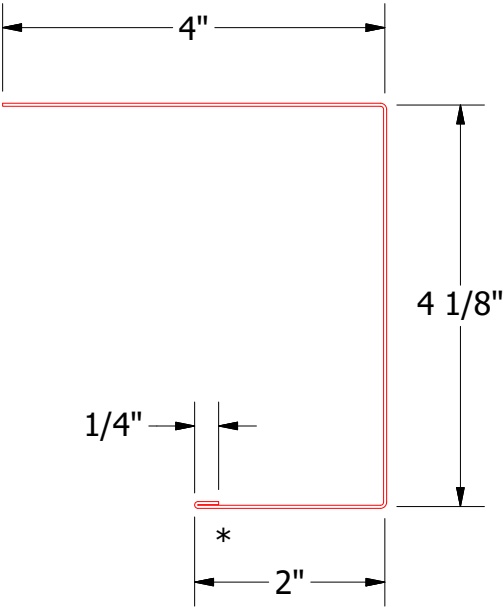
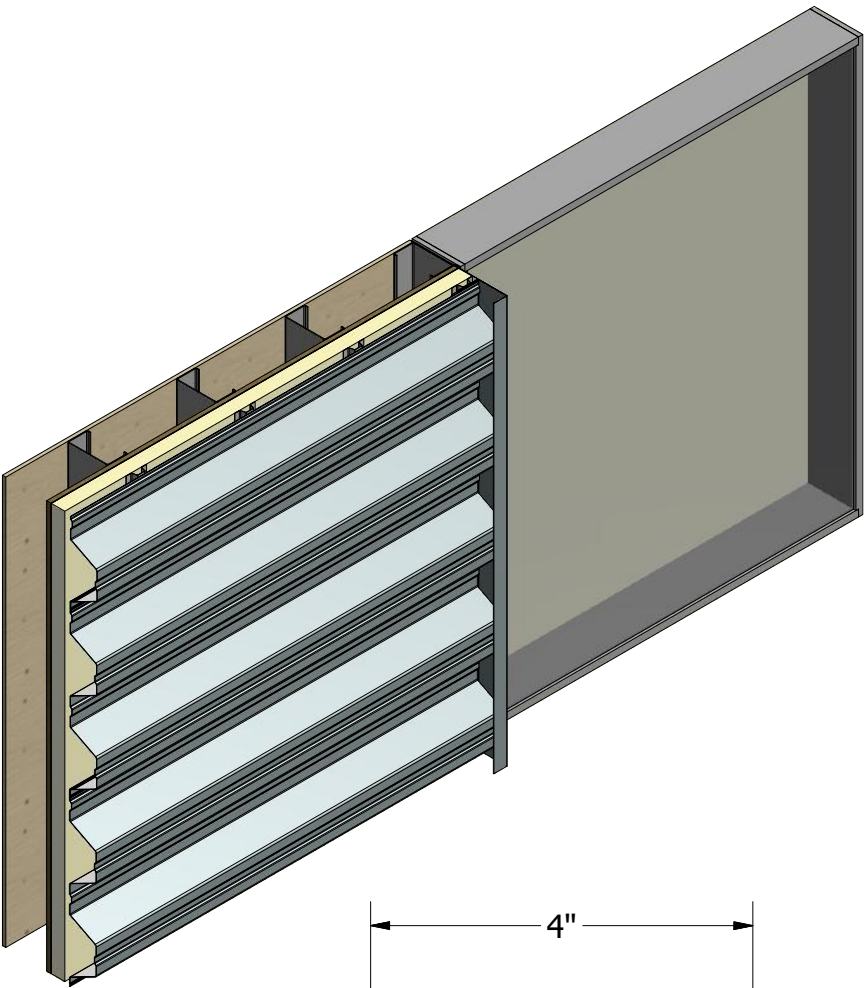
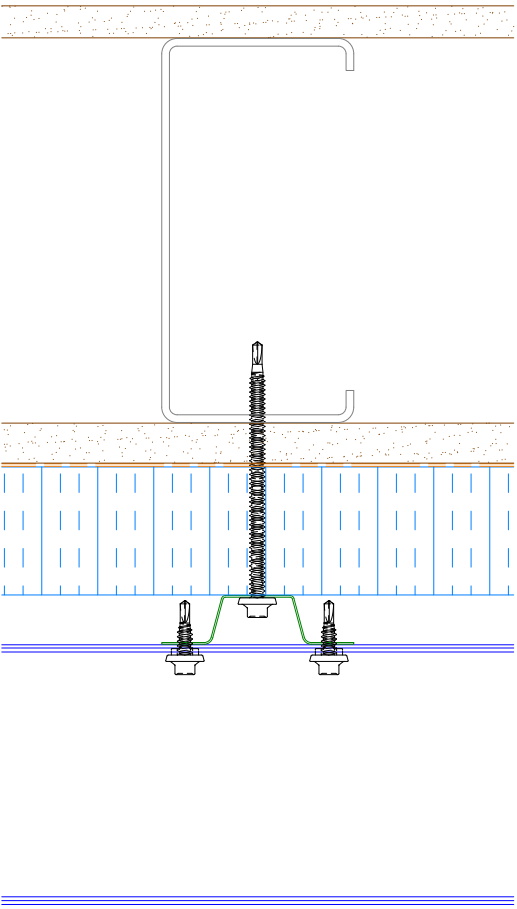
REV. NO.	DATE	DESCRIPTION OF REVISION	BY	APP

Horizontal Panel



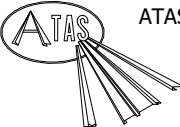
- Window
- Metal Wall Stud
- Backer Rod and Sealant
- Interior Finish
- Water Resistant Insulation
- Exterior Gypsum Board
- Angle (From Flatstock)
- Water Resistant Insulation
- Vertical Subgirt
- Butyl Tape
- Angle Trim
- #14 x 7/8" Painted Hex Washer Head Fastener with Washer
- J Channel
- Span Wall Panel

Alternative Subgirt Orientation



BSA140-J Channel

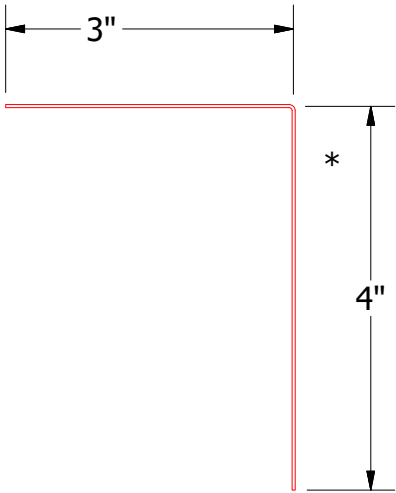
2 Stage Method of Weather Proofing



ATAS INTERNATIONAL, INC
Allentown PA
610-395-8445
Mesa AZ
480-558-7210

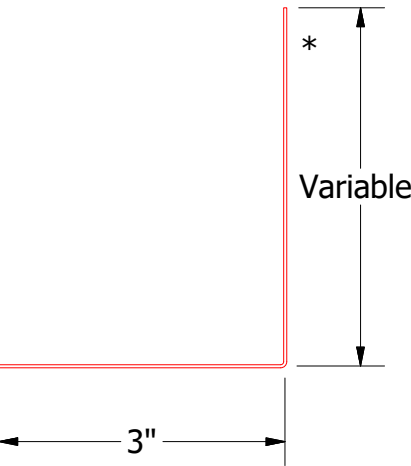
Span Wall Jamb Detail

DWG. NO.		DR	KRK	DATE	3/9/2015
APP		DATE			
MATERIAL		SH. SIZE	B	SCALE	X:X



BSA680-Angle Trim

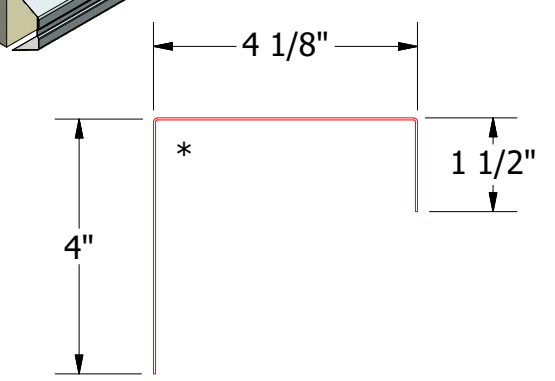
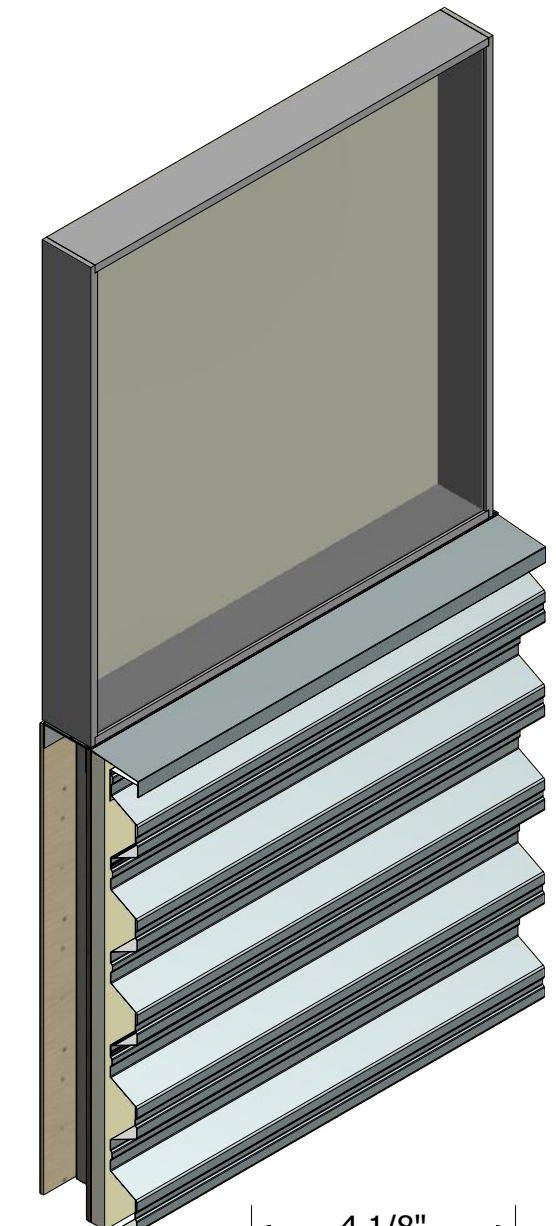
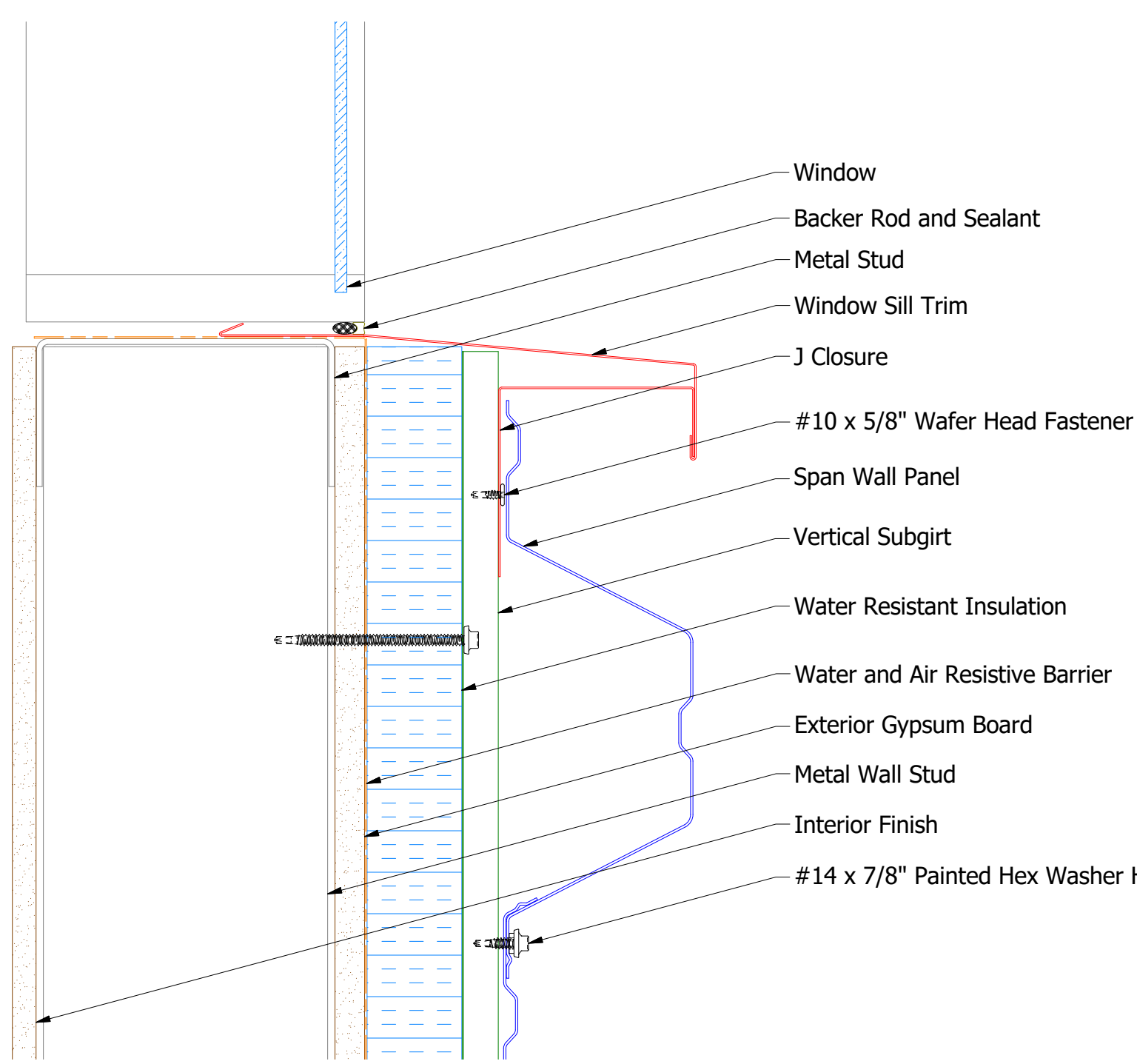
REV. NO.	DATE	DESCRIPTION OF REVISION	BY	APP



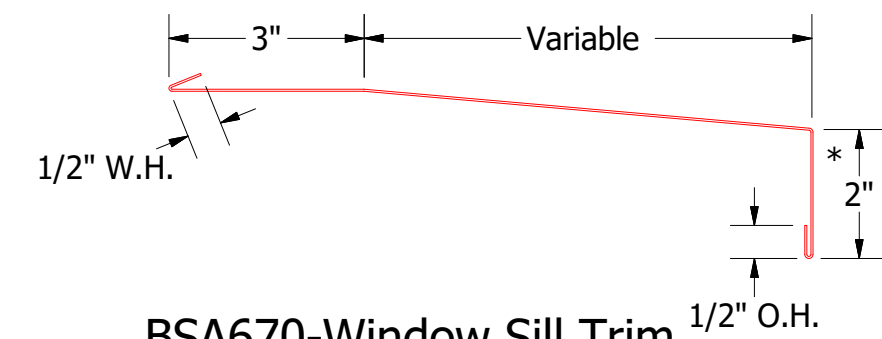
Angle

Note: * denotes color side.

Horizontal Panel

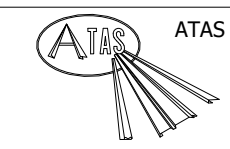


BSA270-J Closure



BSA670-Window Sill Trim

2 Stage Method of Weather Proofing



ATAS INTERNATIONAL, INC
Allentown PA
610-395-8445
Mesa AZ
480-558-7210

TITLE				Span Wall Window Sill Detail	
DWG. NO.		DR		DATE	
		APP		DATE	
MATERIAL		SH. SIZE		SCALE	
		B		X:X	

REV. NO.	DATE	DESCRIPTION OF REVISION	BY	APP