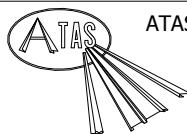
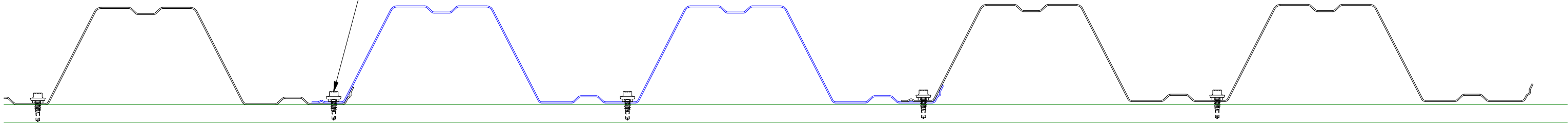


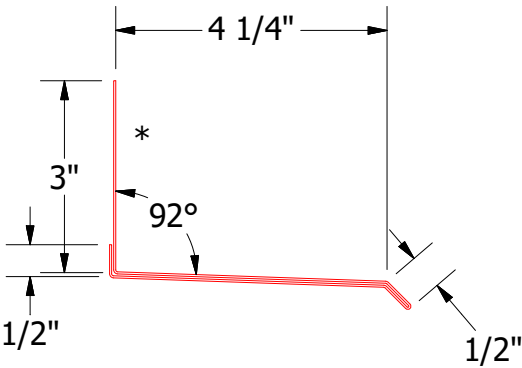
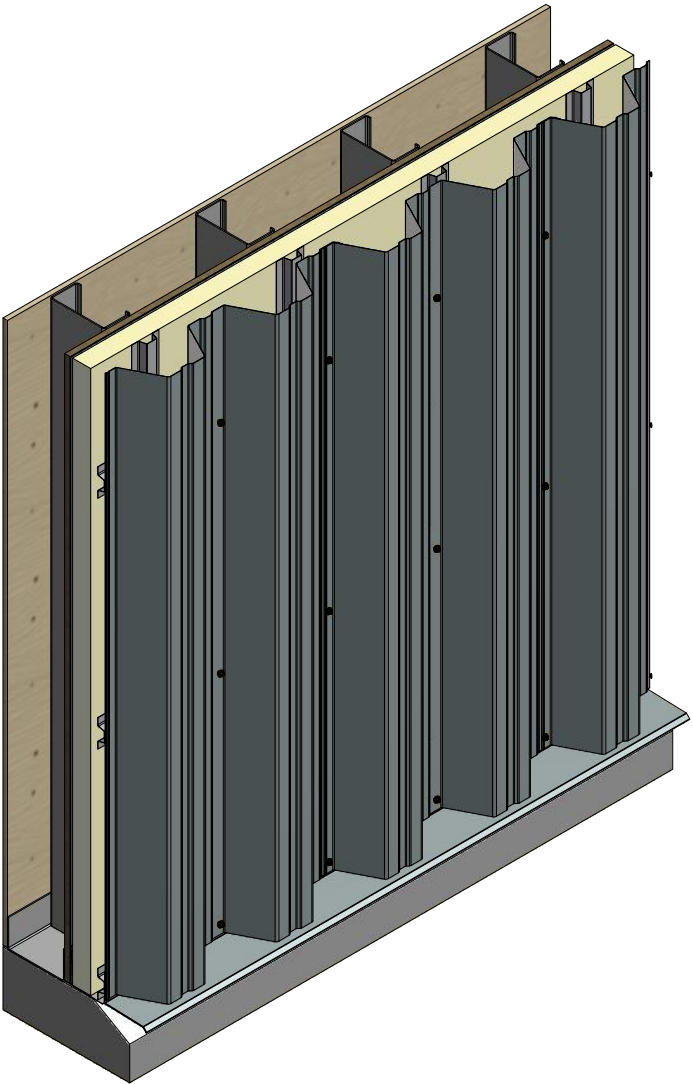
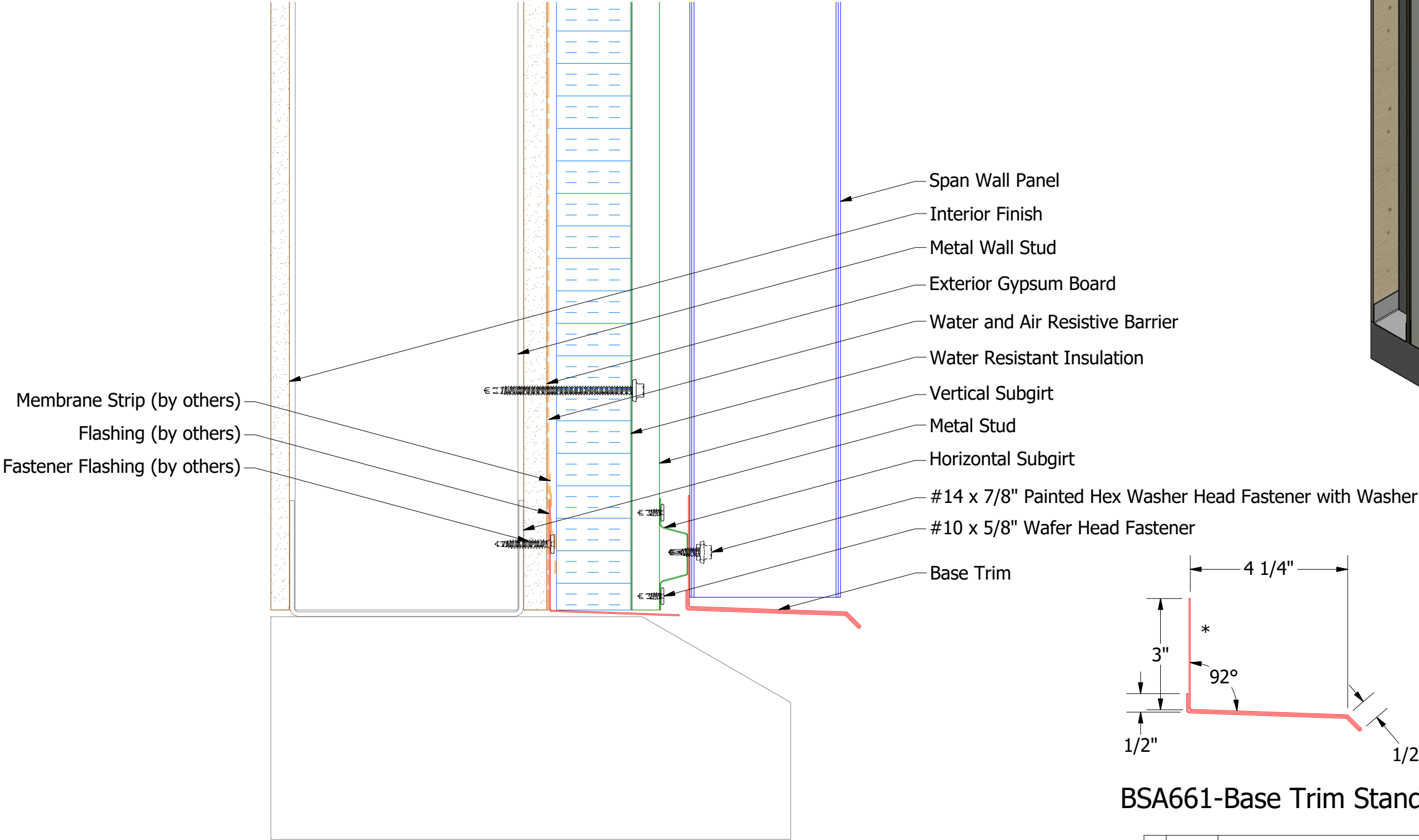
#14 x 7/8" Painted Hex Washer Head Fastener with Washer



ATAS INTERNATIONAL, INC
Allentown PA
610-395-8445
Mesa AZ
480-558-7210


					Span Wall Panel Detail			
					DWG. NO.		DR	DATE
							DMR	12/16/2016
					MATERIAL		APP	DATE
REV. NO.	DATE	DESCRIPTION OF REVISION	BY	APP			SH. SIZE	SCALE
							B	X:X

Vertical Panel

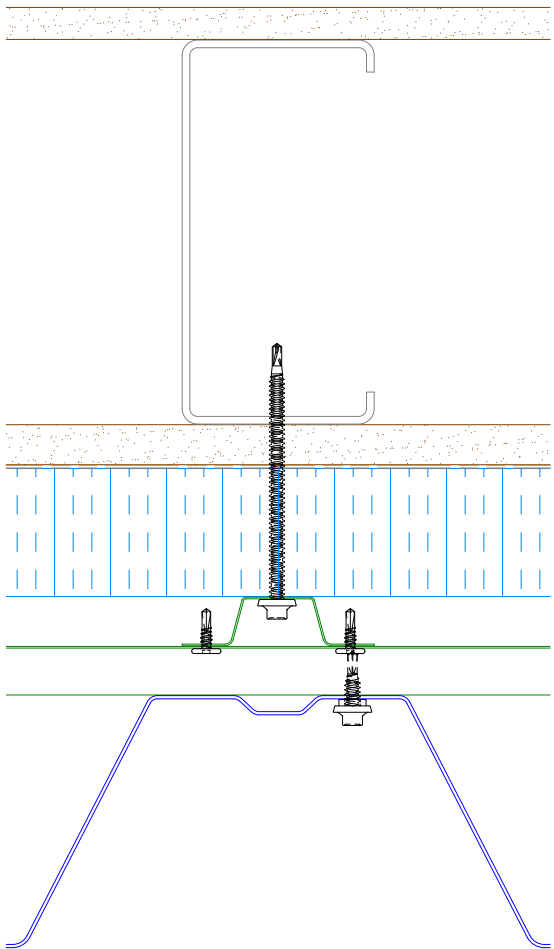
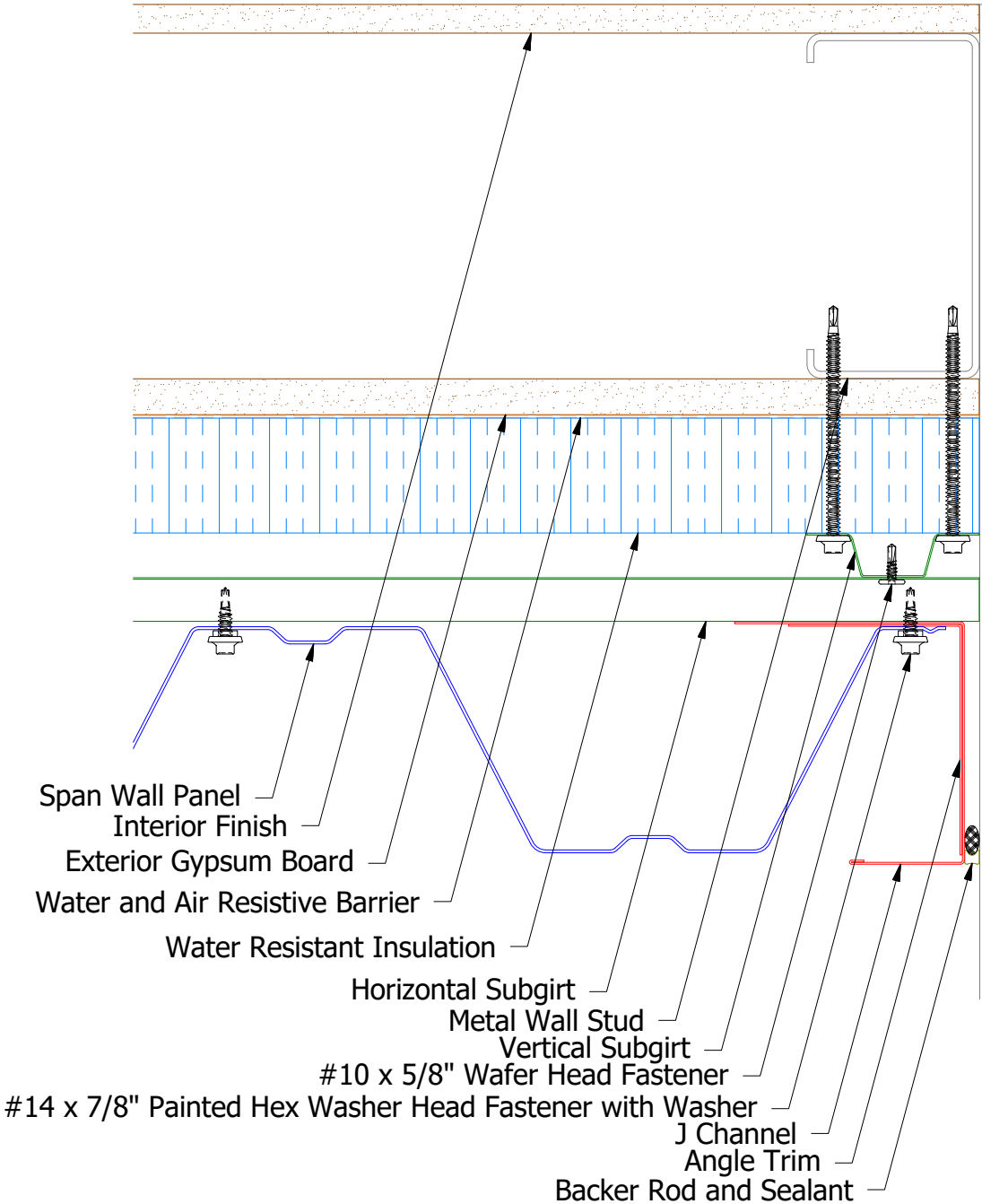


BSA661-Base Trim Standard

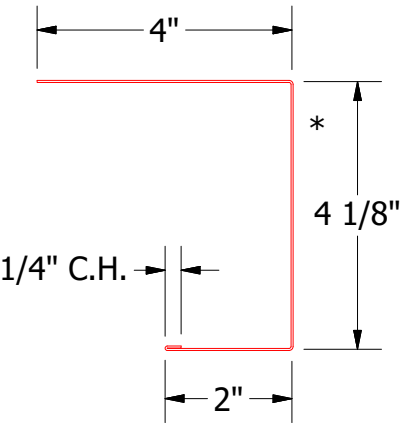
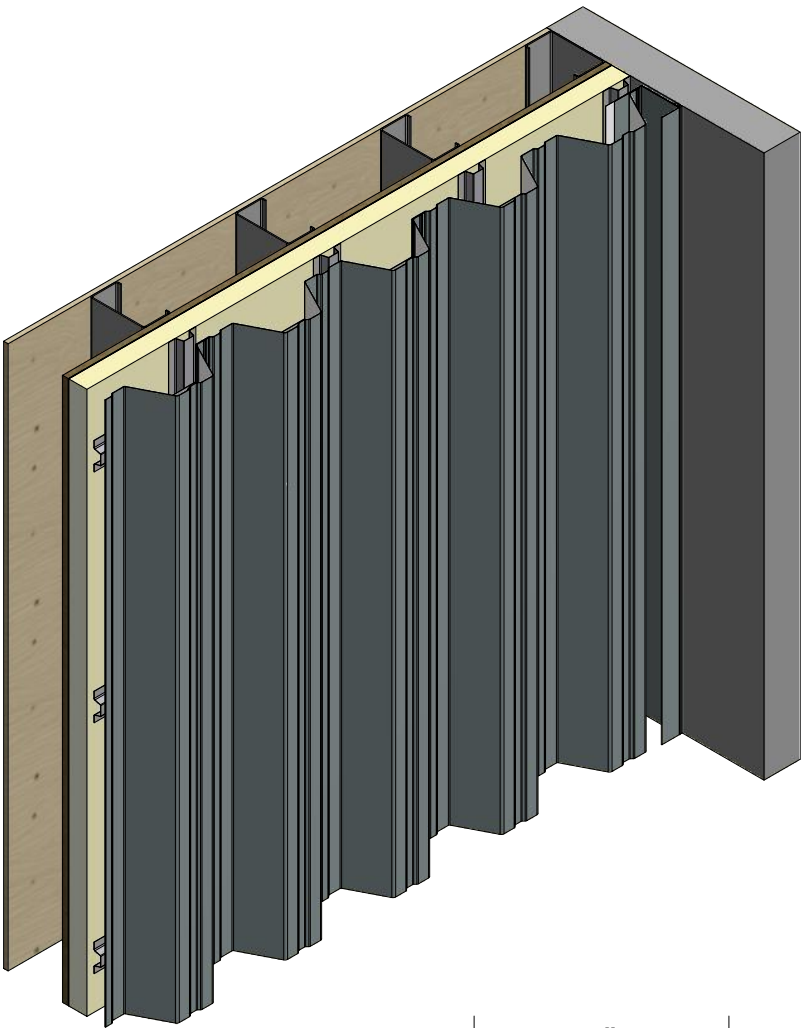
2 Stage Method of Weather Proofing

		ATAS INTERNATIONAL, INC Allentown PA 610-395-8445 Mesa AZ 480-558-7210	
TITLE Span Wall Panel Base Detail			
DWG. NO.		DR KRK	DATE 3/3/2015
MATERIAL		APP	DATE
		SH. SIZE B	SCALE X:X

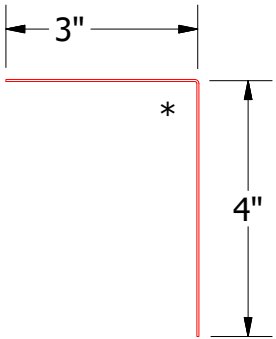
Vertical Subgirt



Alternate Subgirt Orientation




BSA140-J Channel



BSA680-Angle Trim

2 Stage Method of Weather Proofing

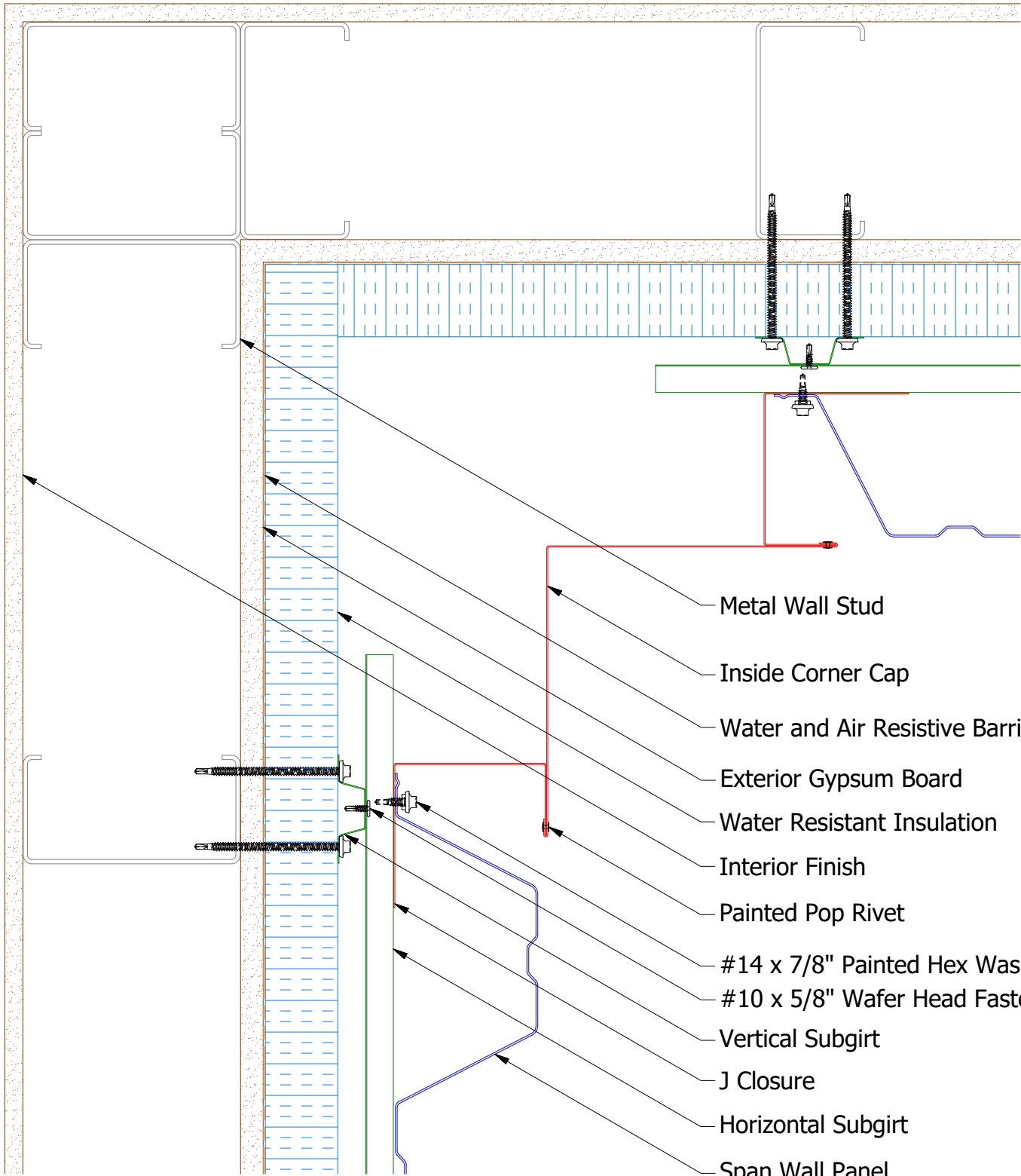


ATAS INTERNATIONAL, INC
Allentown PA
610-395-8445
Mesa AZ
480-558-7210

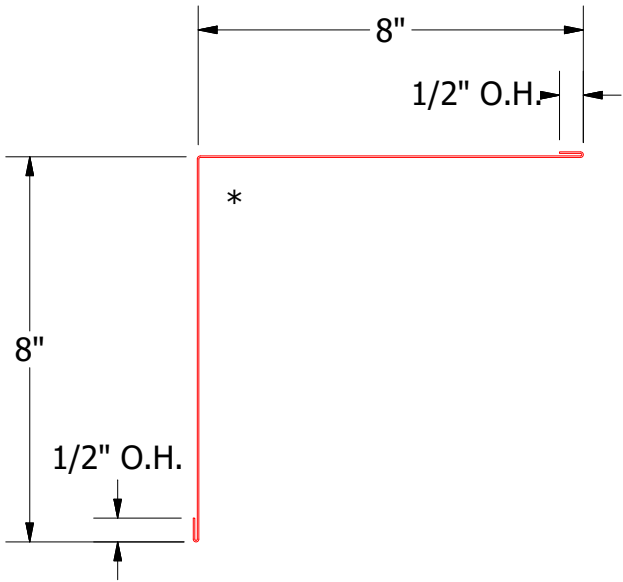
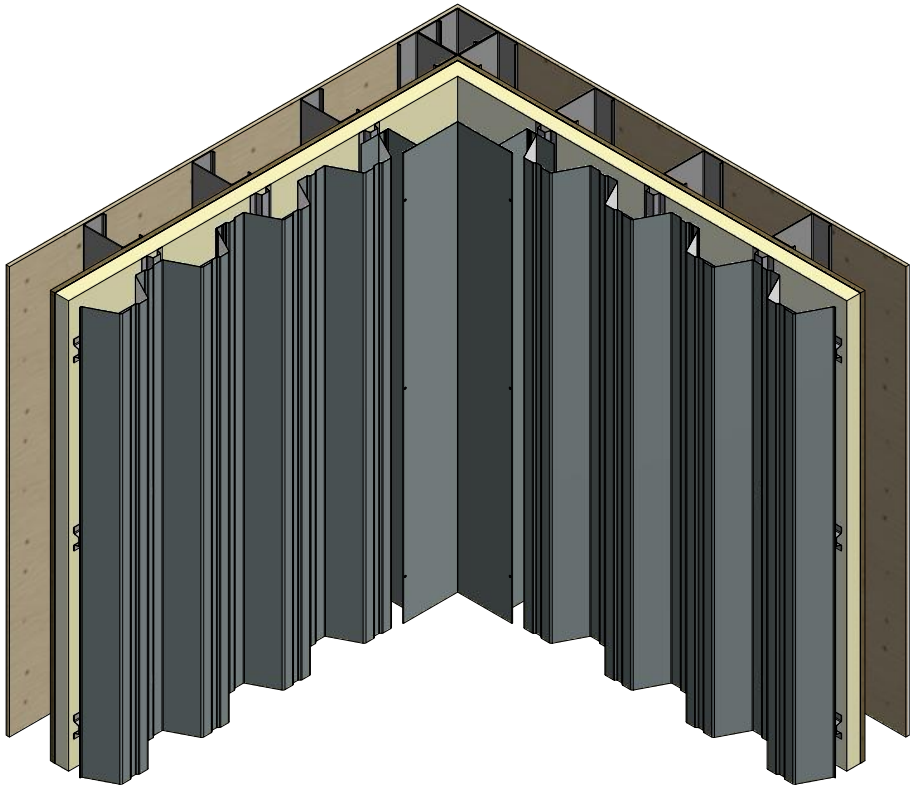
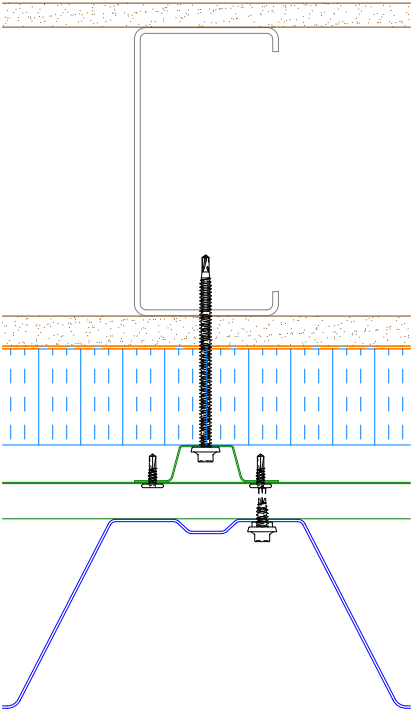
TITLE Span Wall Panel Endwall Detail			
DWG. NO.		DR KRK	DATE 3/5/2015
APP		DATE	
MATERIAL		SH. SIZE B	SCALE X:X

REV. NO.	DATE	DESCRIPTION OF REVISION	BY	APP

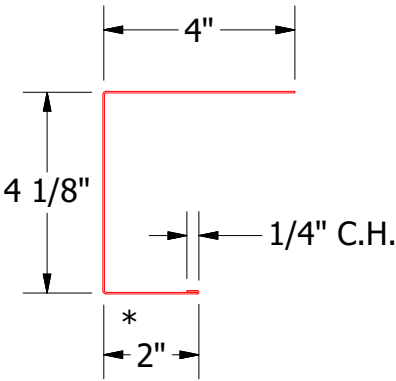
Vertical Panel



Alternate Subgirt Orientation




BSA600-Inside Corner Cap



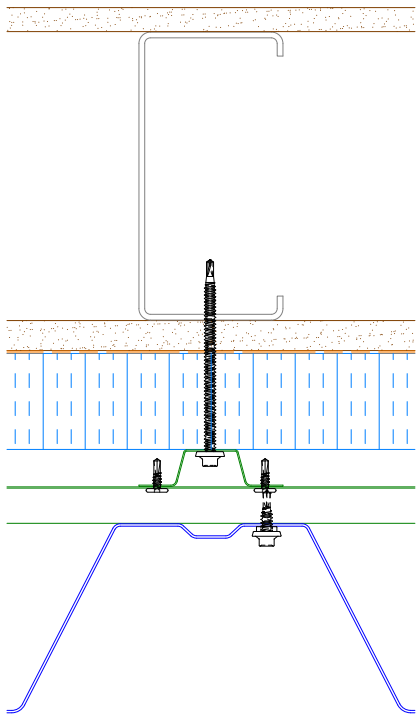
BSA140-J Channel

2 Stage Method of Weather Proofing

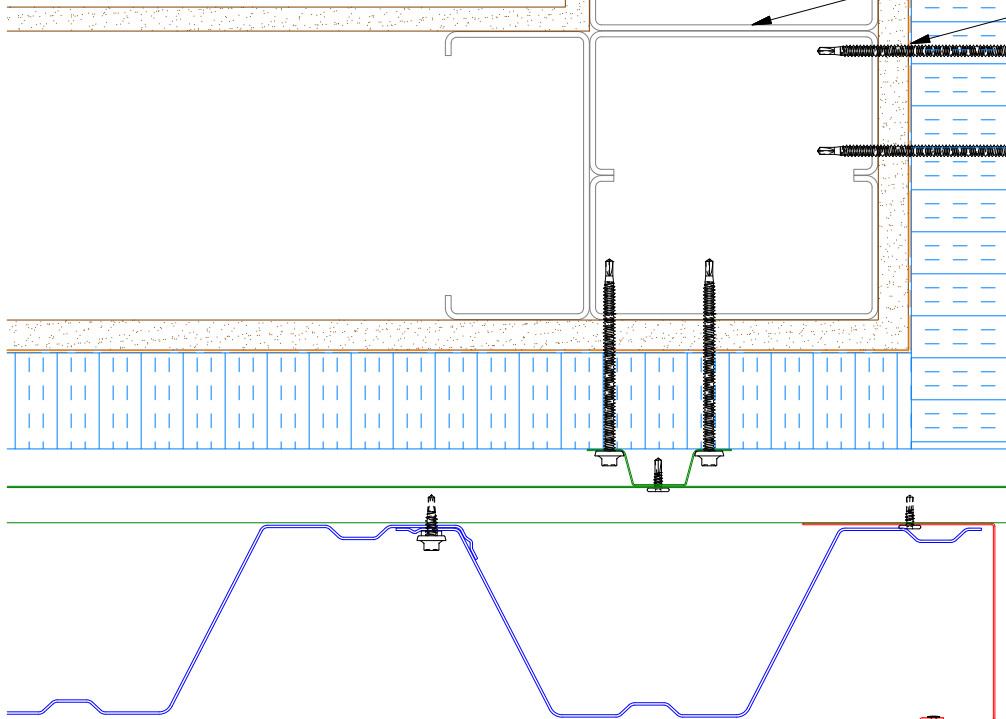
		ATAS INTERNATIONAL, INC	
		Allentown PA	
		610-395-8445	
		Mesa AZ	
		480-558-7210	
TITLE			
Span Wall Inside Corner Cap Detail			
DWG. NO.		DR	DATE
		KRK	3/6/2015
MATERIAL		APP	DATE
		SH. SIZE	SCALE
		B	X:X

REV. NO.	DATE	DESCRIPTION OF REVISION	BY	APP

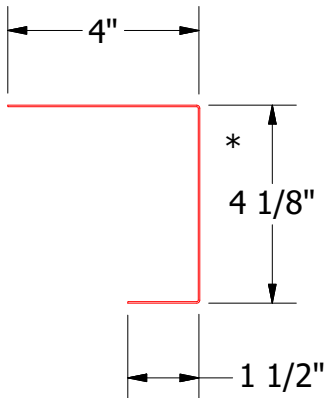
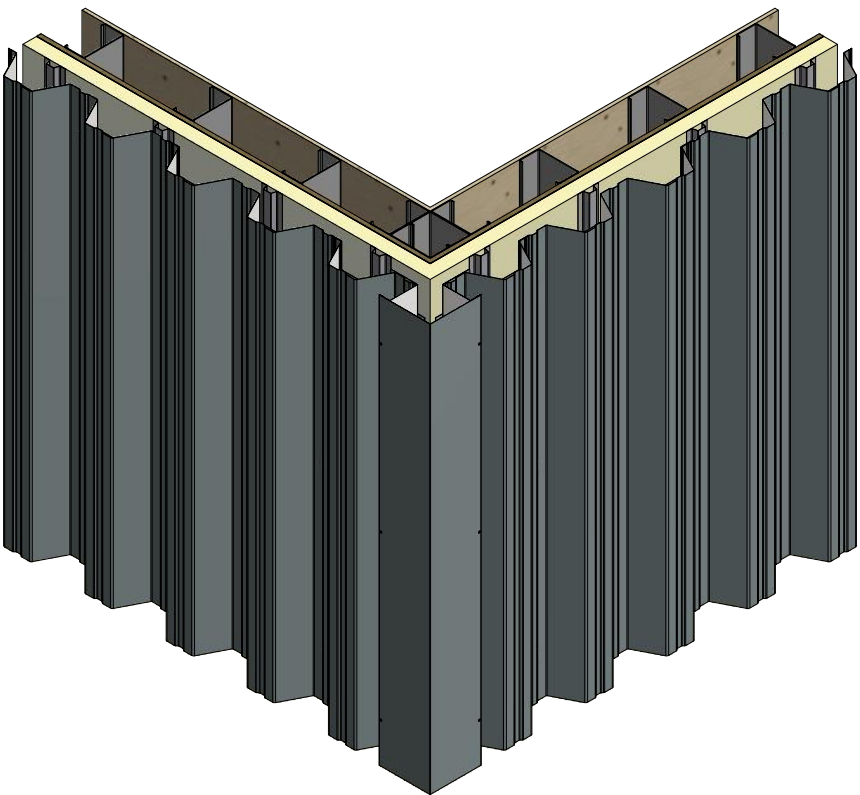
Vertical Panel



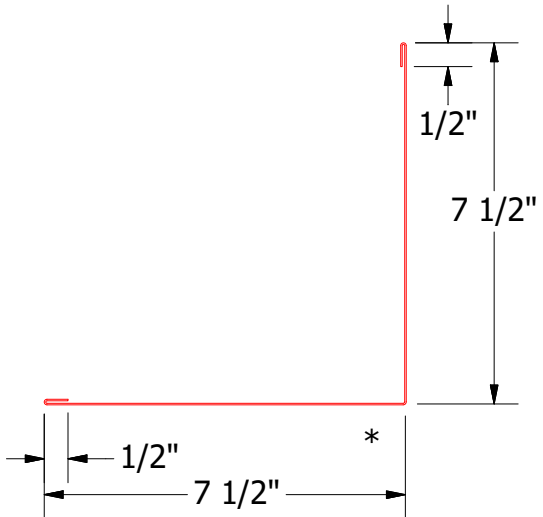
Alternate Subgirt Orientation



- Interior Finish
- Exterior Gypsum Board
- #14 x 7/8" Painted Hex Washer Head Fastener with Washer
- Metal Wall Stud
- Water and Air Resistive Barrier
- Vertical Subgirt
- Horizontal Subgirt
- Span Wall Panel
- Water Resistant Insulation
- #10 x 5/8" Wafer Head Fastener
- Painted Pop Rivet (Stainless Steel)
- J Closure
- Outside Corner Cap




BSA270-J Closure



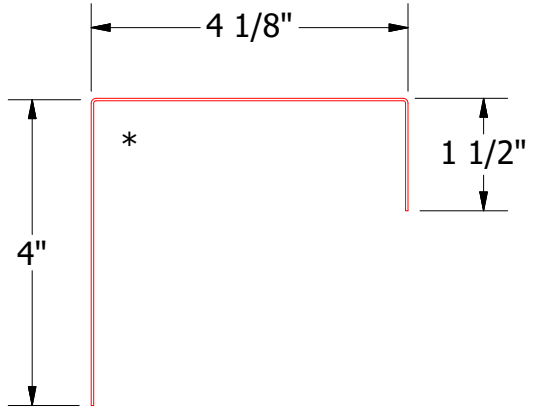
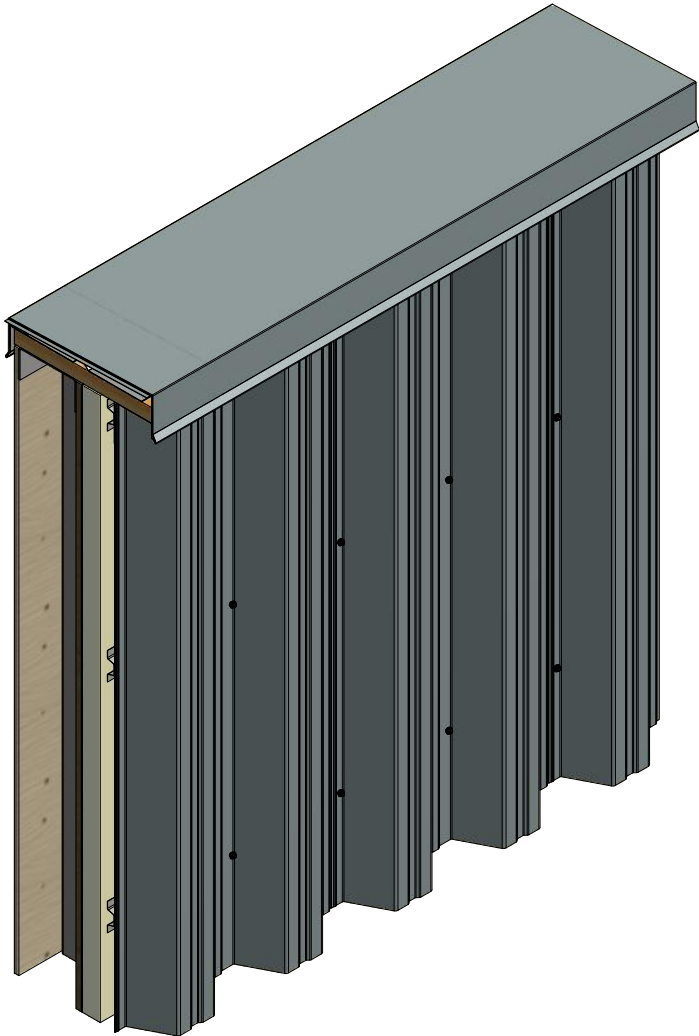
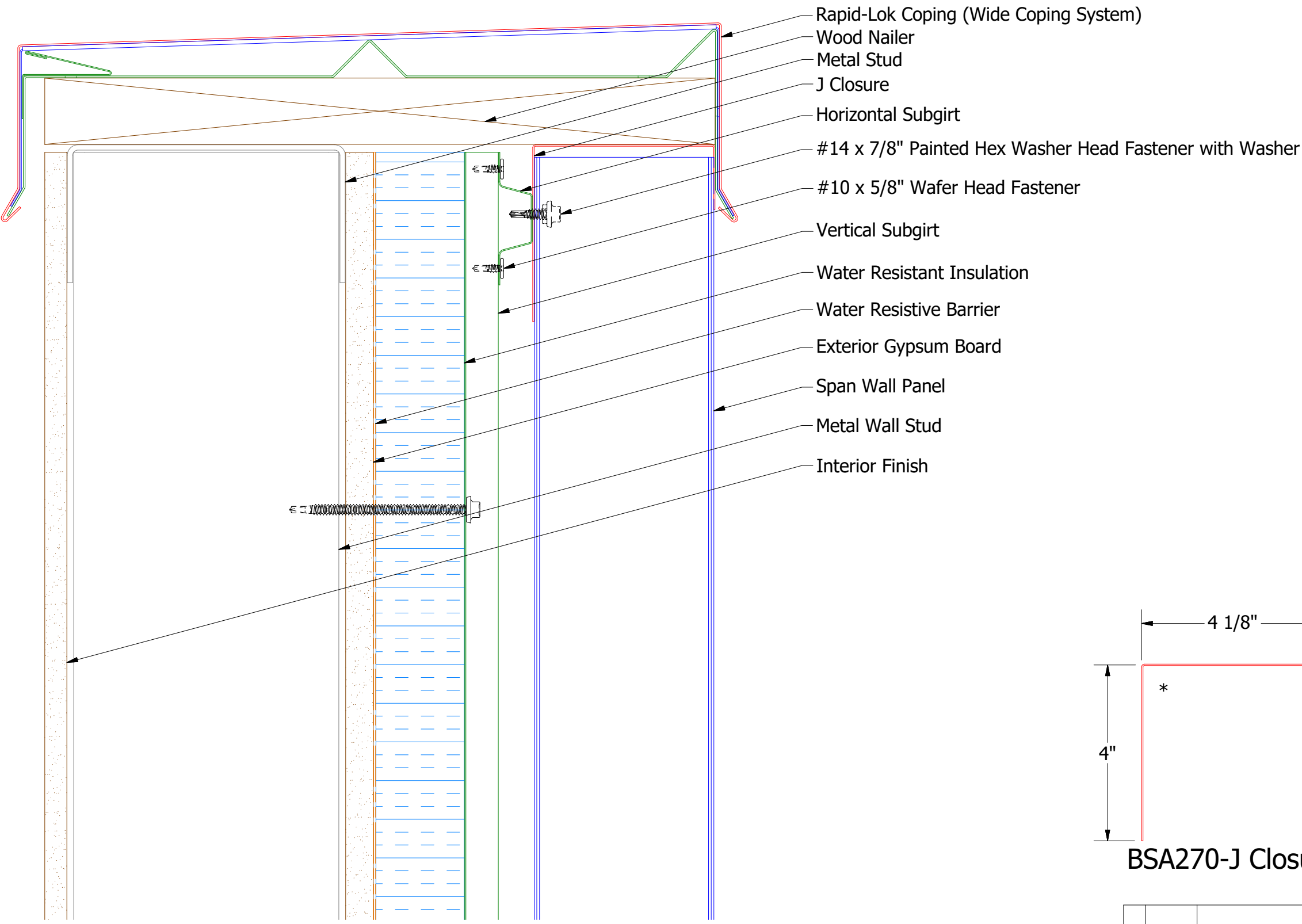
BSA610-Outside Corner Cap

2 Stage Method of Weather Proofing

	ATAS INTERNATIONAL, INC		
	Allentown PA 610-395-8445 Mesa AZ 480-558-7210		
TITLE			
Span Wall Outside Corner Cap Detail			
DWG. NO.	DR	DATE	
	KRK	3/6/2015	
	APP	DATE	
MATERIAL	SH. SIZE	SCALE	
	B	X:X	

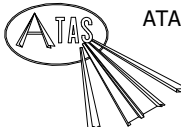
REV. NO.	DATE	DESCRIPTION OF REVISION	BY	APP

Vertical Panel



BSA270-J Closure

2 Stage Method of Weather Proofing

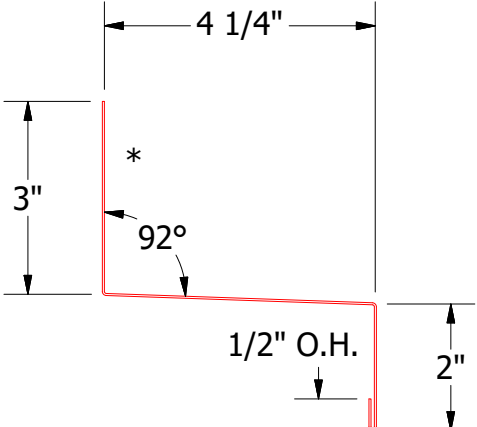
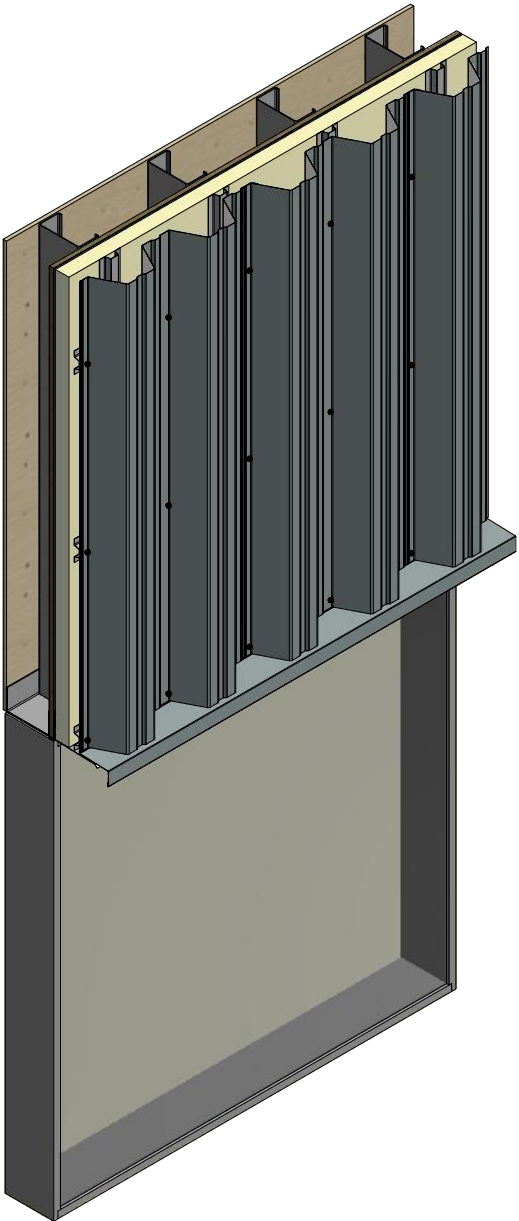
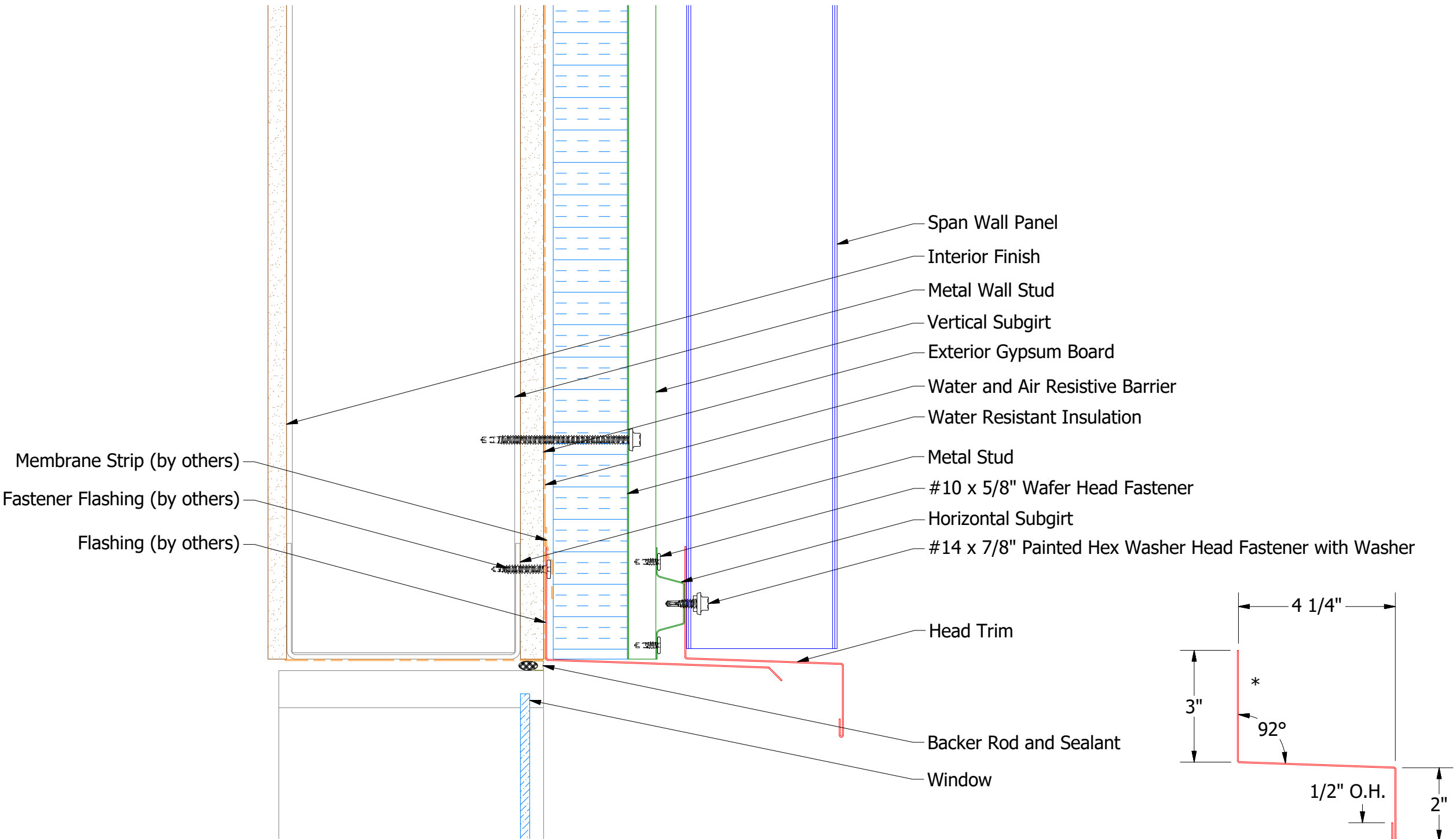


ATAS INTERNATIONAL, INC
Allentown PA
610-395-8445
Mesa AZ
480-558-7210

TITLE			
Span Wall Top of Wall Detail			
DWG. NO.		DR	DATE
		KRK	3/9/2015
APP		DATE	
MATERIAL		SH. SIZE	SCALE
		B	X:X


REV. NO.	DATE	DESCRIPTION OF REVISION	BY	APP

Vertical Panel

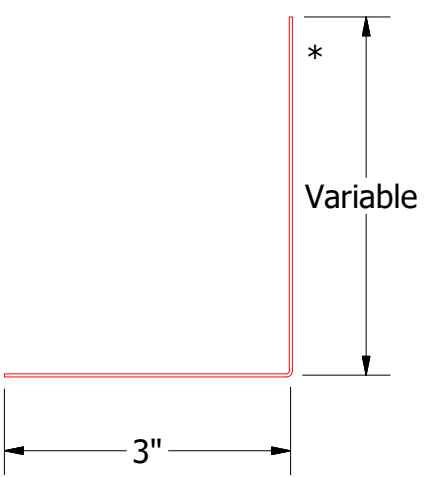
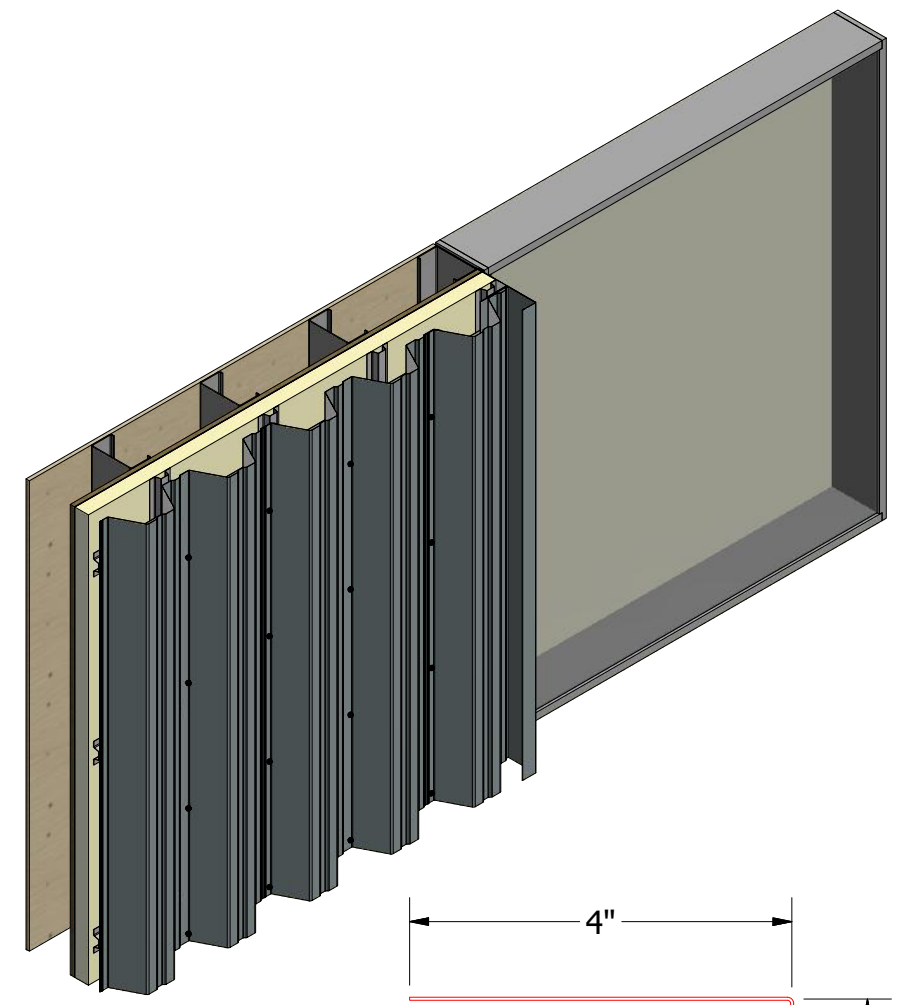
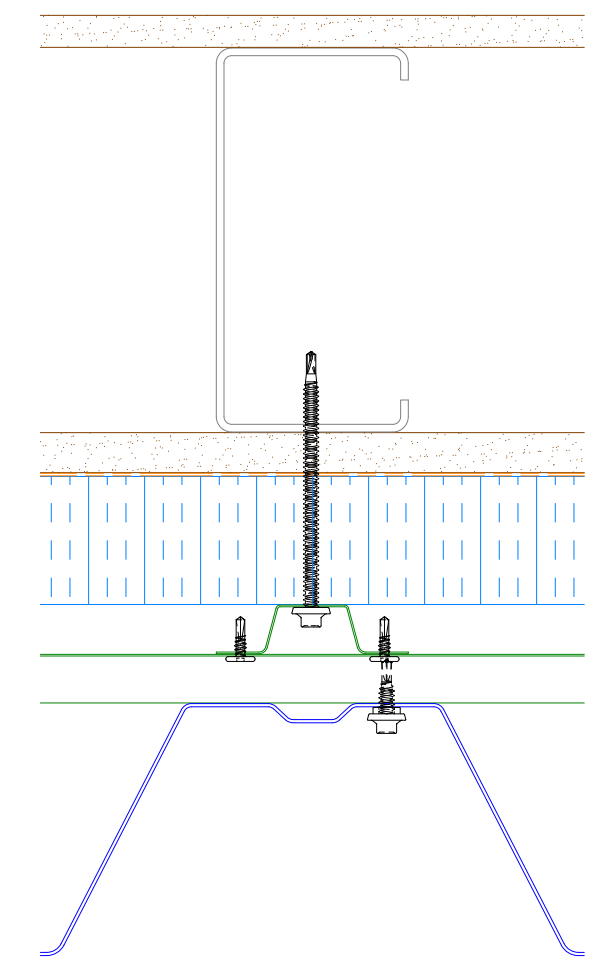
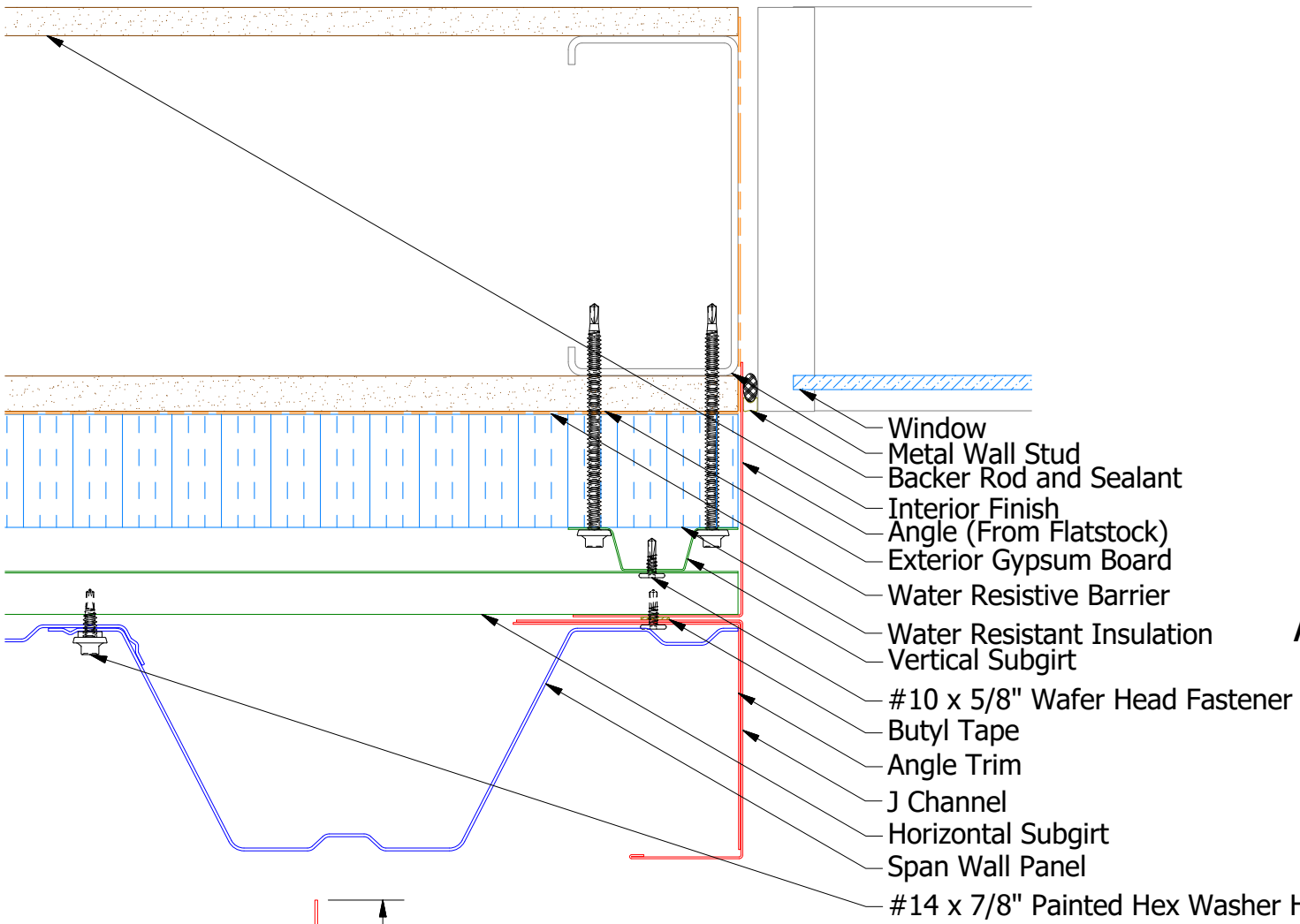


BSA550-Head Trim

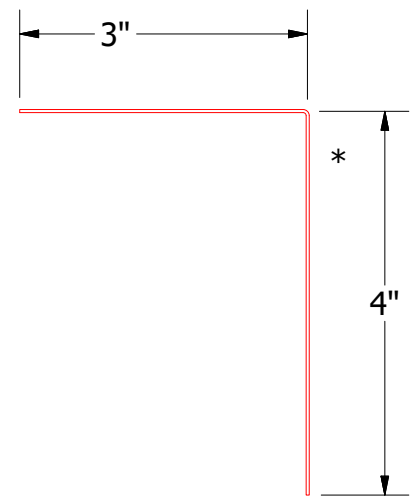
2 Stage Method of Weather Proofing

			ATAS INTERNATIONAL, INC Allentown PA 610-395-8445 Mesa AZ 480-558-7210		
TITLE Span Wall Panel Head Detail					
DWG. NO.			DR	KRK	DATE 3/6/2015
MATERIAL			APP		DATE
			SH. SIZE	B	SCALE X:X

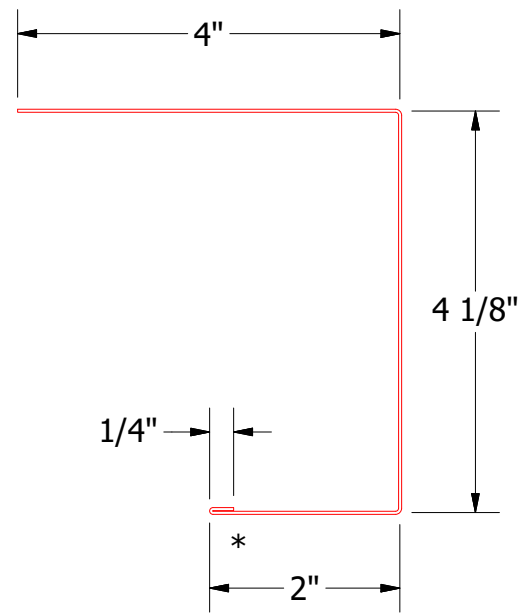
Vertical Panel



Angle

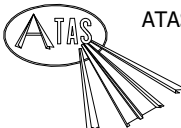


BSA680-Angle Trim



BSA140-J Channel

2 Stage Method of Weather Proofing

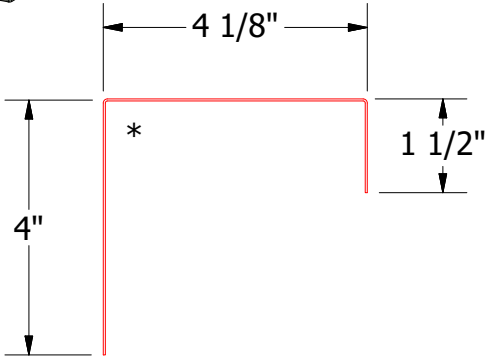
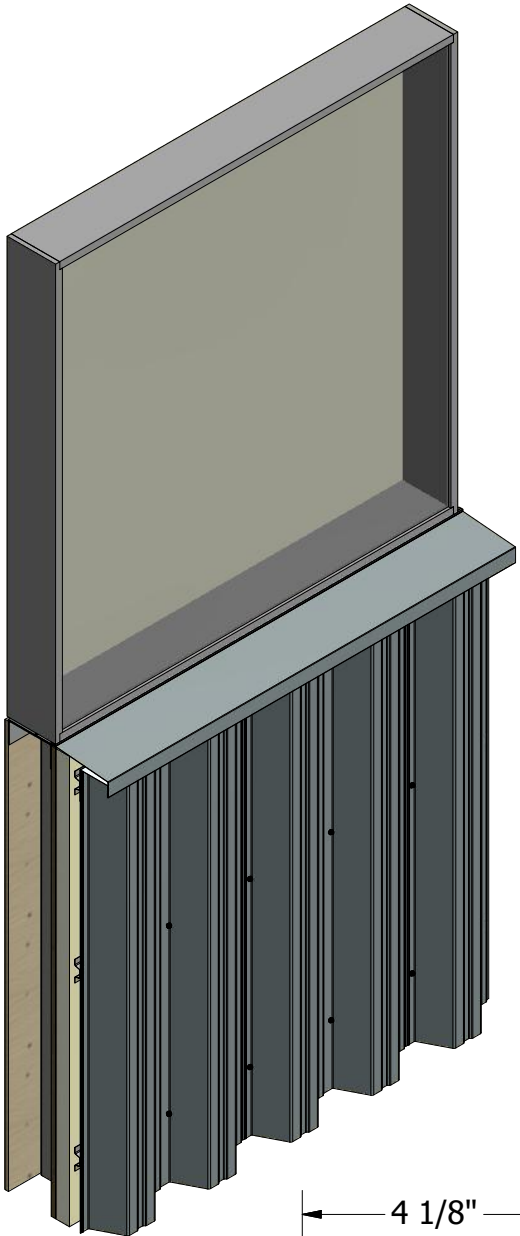
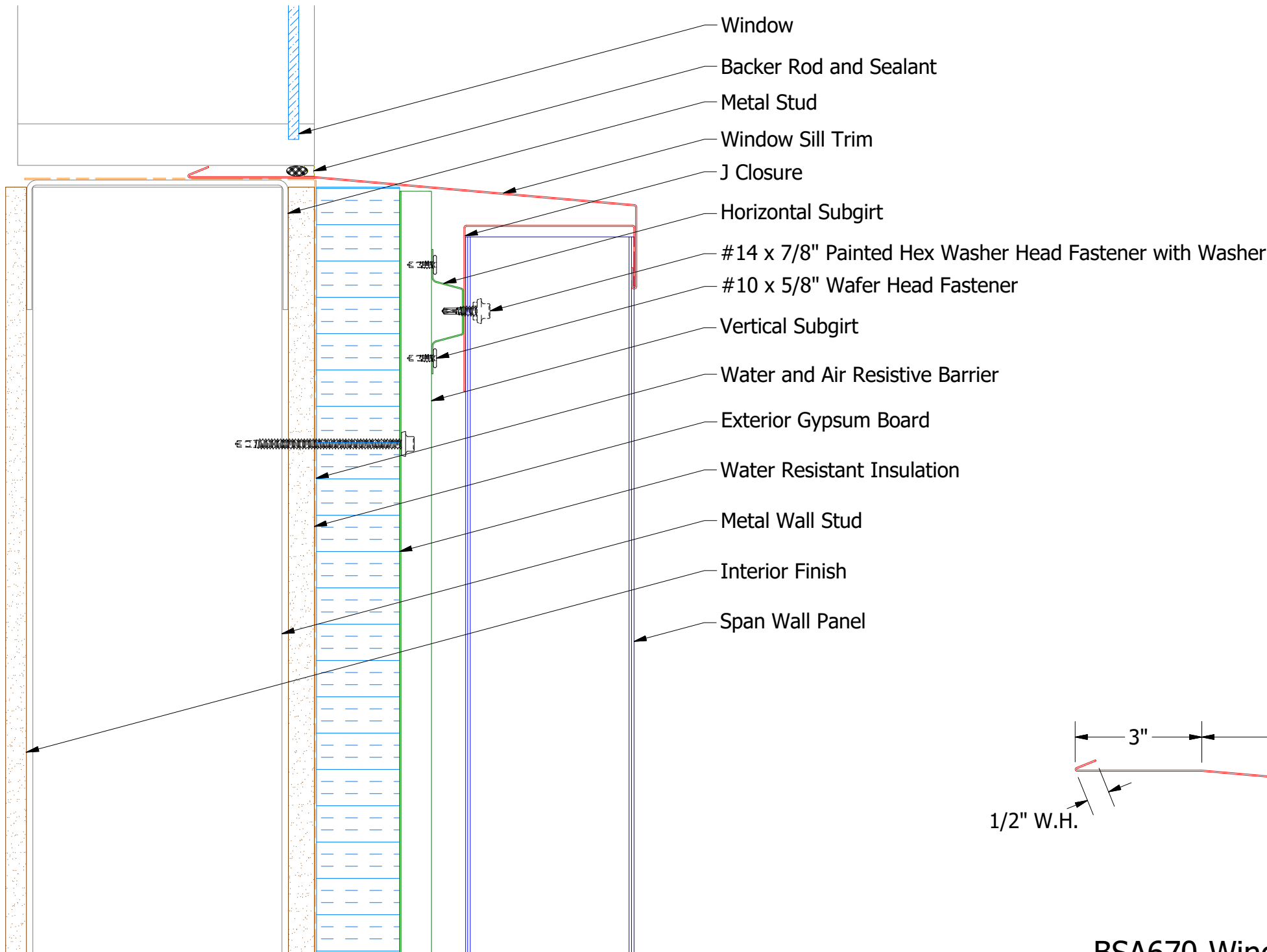


ATAS INTERNATIONAL, INC
Allentown PA
610-395-8445
Mesa AZ
480-558-7210

TITLE				Span Wall Jamb Detail	
DWG. NO.		DR	KRK	DATE	3/9/2015
MATERIAL		APP		DATE	
REV. NO.	DATE	DESCRIPTION OF REVISION	BY	APP	SH. SIZE B SCALE X:X

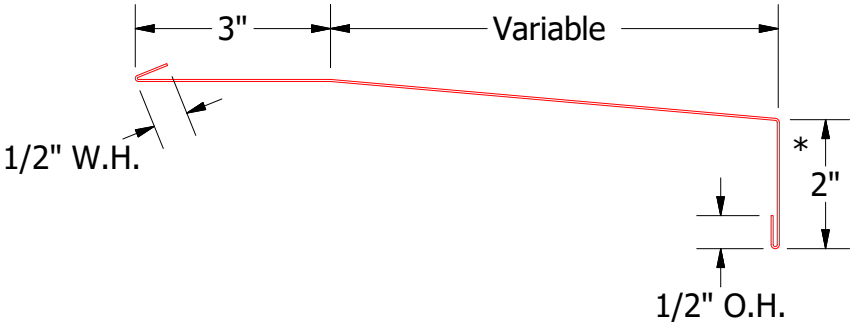
Note: * denotes color side.

Vertical Panel

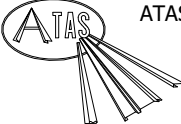


BSA270-J Closure

2 Stage Method of Weather Proofing



BSA670-Window Sill Trim



ATAS INTERNATIONAL, INC
Allentown PA
610-395-8445
Mesa AZ
480-558-7210

TITLE				Span Wall Window Sill Detail	
DWG. NO.		DR		KRK	DATE
		APP			3/9/2015
MATERIAL		SH. SIZE		B	SCALE
					X:X

REV. NO.	DATE	DESCRIPTION OF REVISION	BY	APP