

1. PRODUCT NAME

STANDING SEAM SHINGLE™ HSS164, HSS165

2. MANUFACTURER

ATAS INTERNATIONAL, INC.
Website: www.atas.com
Email: info@atas.com
Corporate Headquarters:
Allentown, PA 18106
Phone: (800) 468-1441

3. PRODUCT DESCRIPTION

Basic Uses:

Standing Seam Shingles are elegant in their style, and feature a four-way interlock to insure weather tightness. These panels are installed with concealed fasteners from eave to ridge, over solid substrate for roof applications. Horizontal seams are staggered to give an attractive appearance. The metal allows for snow and ice to slide off easily, thus preventing damage from freeze and thaw cycles. The shingles with a Coppertone finish are ideal for accent roofing on entryways, bay windows, and other details. Standing Seam Shingles can also be used for wall applications.

Composition & Materials:

Standard Offerings: Panels are manufactured from .032 aluminum or 16 oz. copper.

Sizes and Profiles:

Standing Seam Shingles are available in either 36" (HSS164) or 60" (HSS165) lengths. The width of the panel is 16".

Colors & Finishes:

A choice of over 40 stock colors is available in a 70% PVDF finish. (Request color chart or chips). Texture is a smooth finish.

4. TECHNICAL DATA

70% PVDF based finishes tested by paint supplier for:

- Dry Film Thickness: ASTM D 1005, ASTM D 1400, ASTM D 4138 or ASTM D 5796
- Specular Gloss: ASTM D 523
- Pencil Hardness: ASTM D 3363
- T-Bend Flexibility: ASTM D 4145
- Mandrel Bend Flexibility: ASTM D 522
- Impact Resistance: ASTM D 2794
- Adhesion: ASTM D 3359
- Water Immersion Resistance: ASTM D 870
- Abrasion Resistance: ASTM D 968
- Acid Resistance: ASTM D 1308
- Acid Rain Resistance (Kesternich): ASTM G 87 or DIN 50018
- Salt Spray: ASTM B 117
- Cyclic Salt Spray: ASTM D 5894 and ASTM D

5487

- Humidity Resistance: ASTM D 2247
- Accelerated Weathering: ASTM D 822 and ASTM G 155, ASTM G 151 or ASTM G 153
- Color Retention, Florida Exposure: ASTM D 2244
- Chalking Resistance: ASTM D 4214
- Cleveland Condensing Cabinet: ASTM D 4585
- Cure Test, MEK Resistance: ASTM D 5402
- Alkali Resistance, Sodium Hydroxide: ASTM D 1308, Procedure 7.2
- Flame Spread Rating: ASTM E 84
- Organic coatings meet requirements of AAMA 2605 when applied to aluminum.

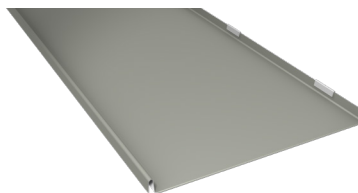
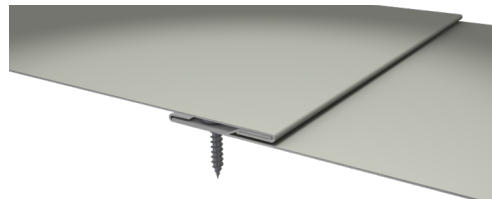
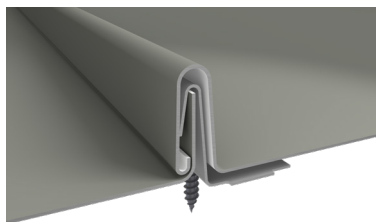
Panel testing/ratings:

- Uplift: UL 580 Class 90
- Fire Resistance: UL 790/ASTM E 108
- Impact Resistance: UL 2218
- Penetration: ICC ES AC166, Par. 4.2
- Aluminum: ASTM B 209
- Copper: ASTM A 370
- Coil Coating: ASTM A 755

5. INSTALLATION

Standing Seam Shingles are installed vertically up the slope of the roof using concealed fasteners and side clips. Horizontal panel seams should be staggered to give an attractive appearance to the roof. Recommended minimum slope is 4 in 12. Wall applications are installed bottom to top, left to right. Installation details and hands-on training via seminars are available through ATAS. Visit www.atas.com for more information.

6. AVAILABILITY & COST



Availability:

Standing Seam Shingles are available through ATAS product distributors. A complete line of related components and trim accessories is available to complete the roof system. Flat sheet and/or coil stock in matching color is also available for fabrication of related accessories by the installing contractor.

Cost:

Contact ATAS product distributors for current pricing.

7. WARRANTY

Products coated with a fluoropolymer, 70% PVDF finish carry a warranty against chalking and fading.

8. MAINTENANCE

Standing Seam Shingles require minimal maintenance. Surface residue may be easily removed by conventional cleaning methods. For painted products, minor scratches should be touched up with a matching paint, available from the manufacturer.

9. TECHNICAL SERVICES

Complete technical information and literature are available at www.atas.com. ATAS will assist with design ideas and shop drawings.

10. FILING SYSTEM

- www.atas.com
- Additional product information is available from the manufacturer upon request.

