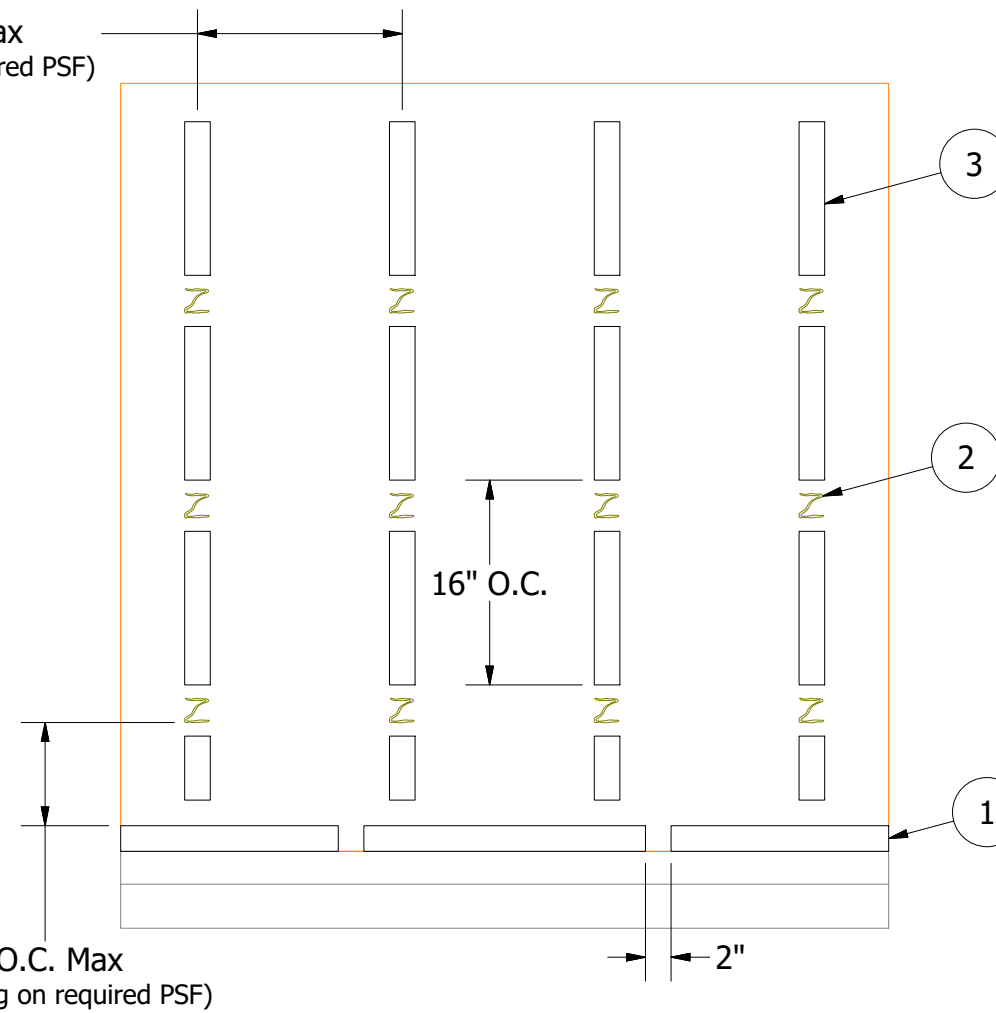


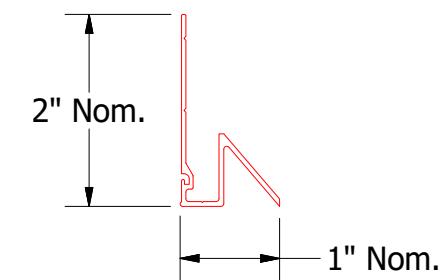
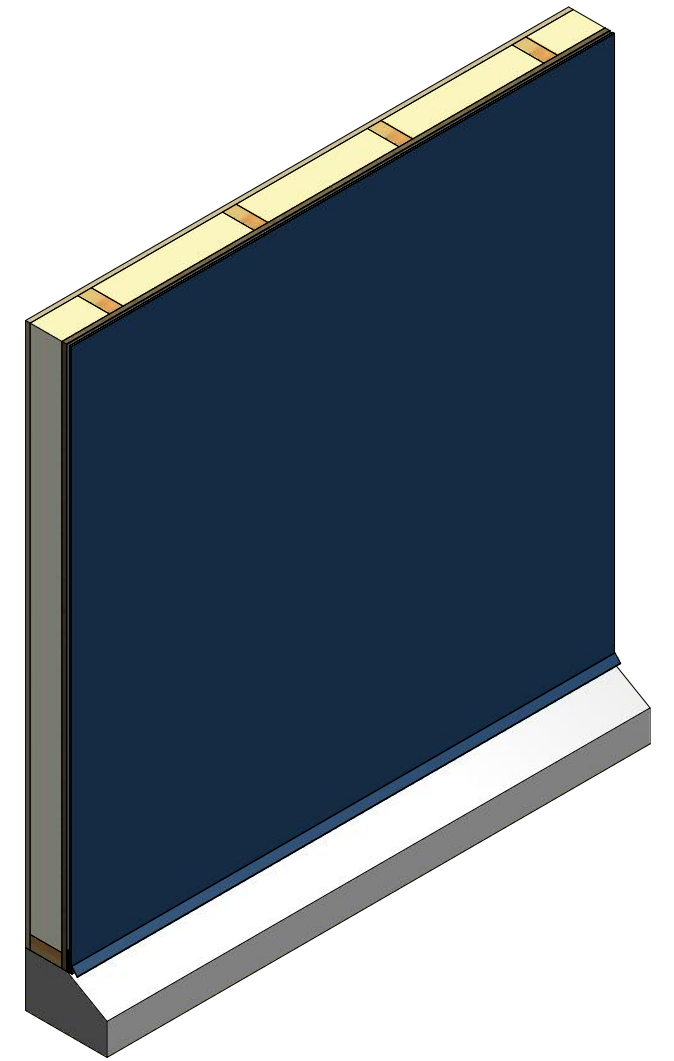
16" - 24" O.C. Max
(depending on required PSF)



(1) Drip Cap Extrusion installed on Foam Tape. 2" min. gap at 24" O.C.

(2) Panel Adhesive applied 16"-24" O.C. Horizontally and 16" O.C. Vertically.

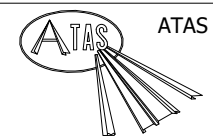
(3) Foam Tape installed Vertically in between Panel Adhesive.



Drip Cap Extrusion



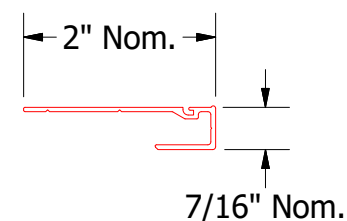
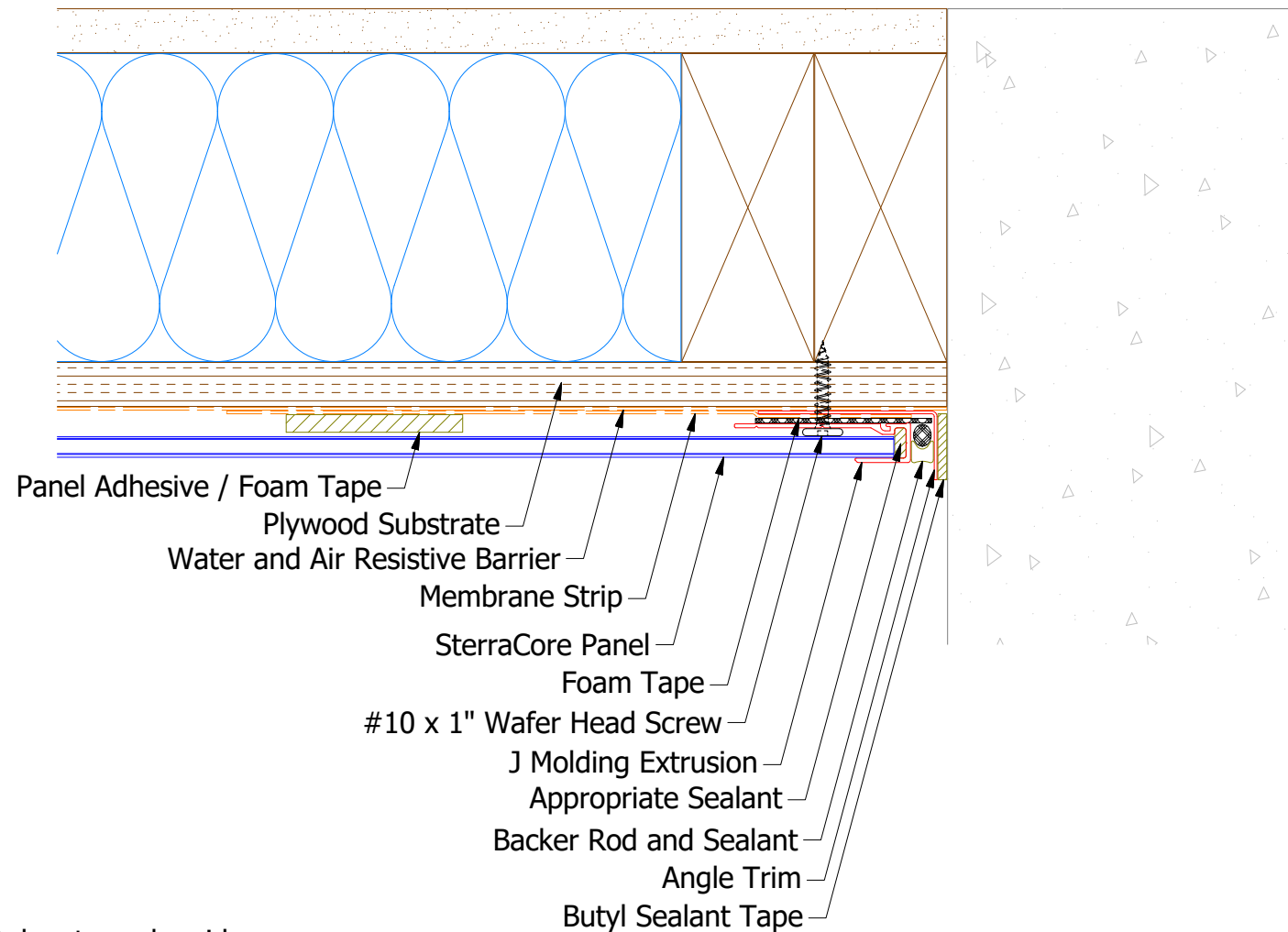
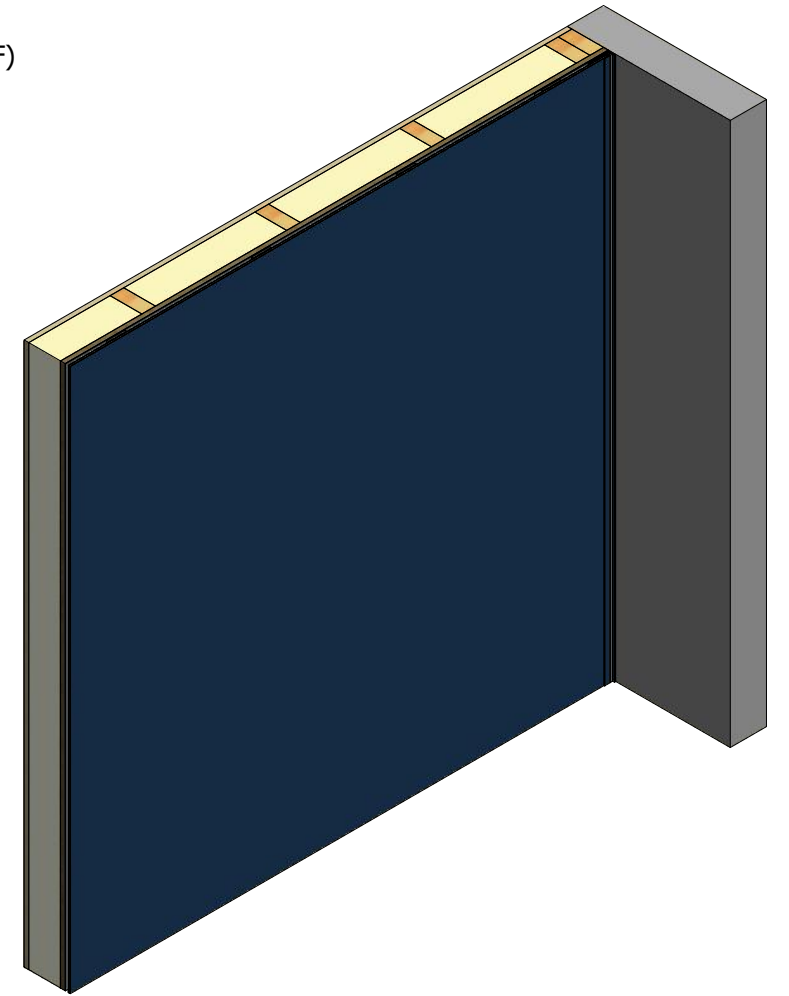
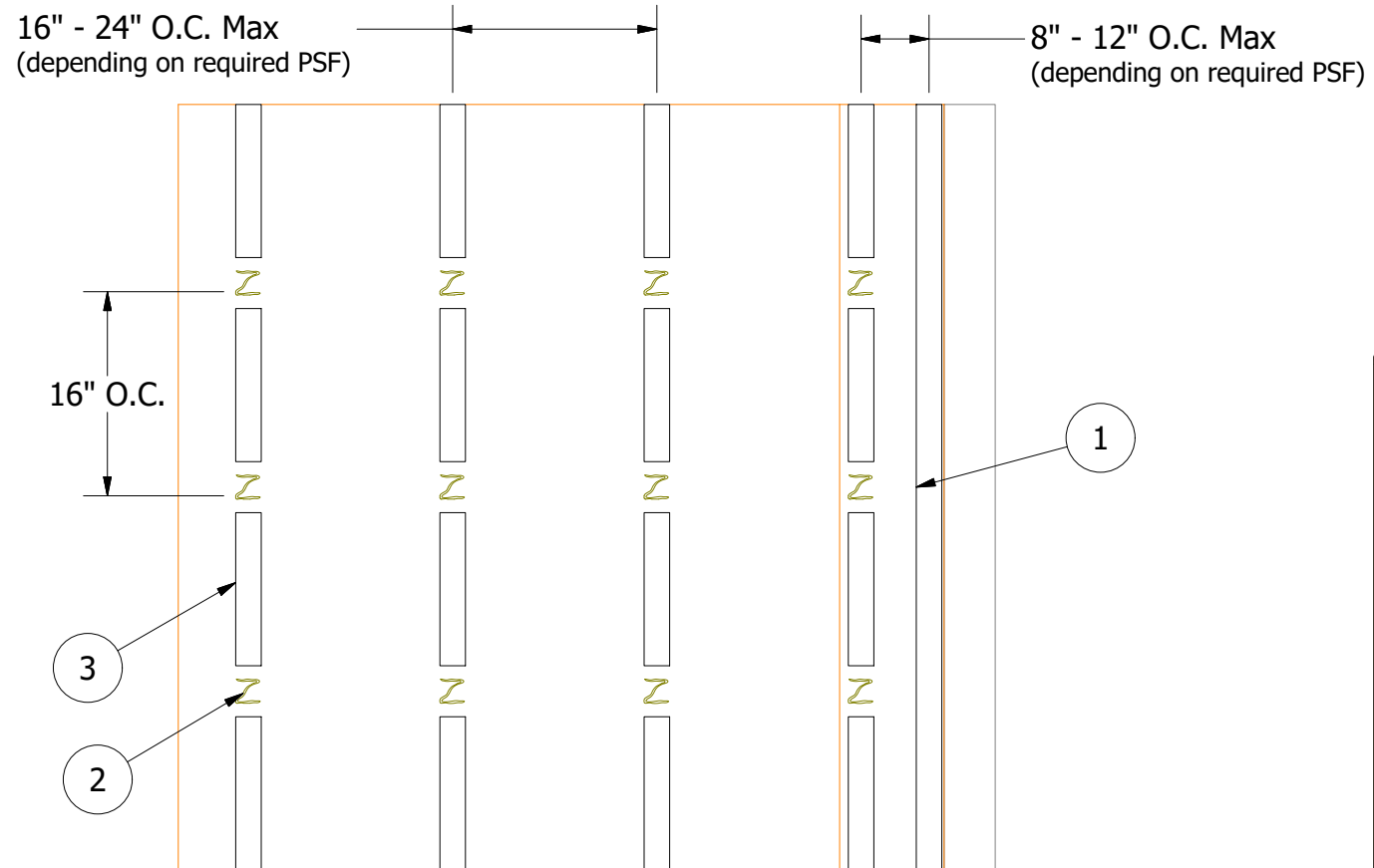
SterraCore Panel



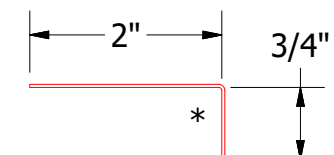
ATAS INTERNATIONAL, INC
Allentown PA
610-395-8445
Mesa AZ
480-558-7210

TITLE				SterraCore Base Detail			
DWG. NO.				DR	KRK	DATE	4/1/2022
MATERIAL				APP		DATE	
REV. NO.	DATE	DESCRIPTION OF REVISION	BY	APP	SH. SIZE	B	SCALE X:X

- (1) J Molding Extrusion installed on Continuous Foam Tape.
- (2) Panel Adhesive applied 16"-24" O.C. Horizontally and 16" O.C. Vertically.
- (3) Foam Tape installed Vertically in between Panel Adhesive.

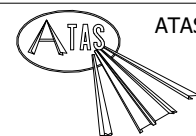


J Molding Extrusion



Angle Trim

SterraCore Panel

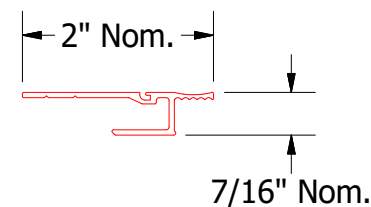
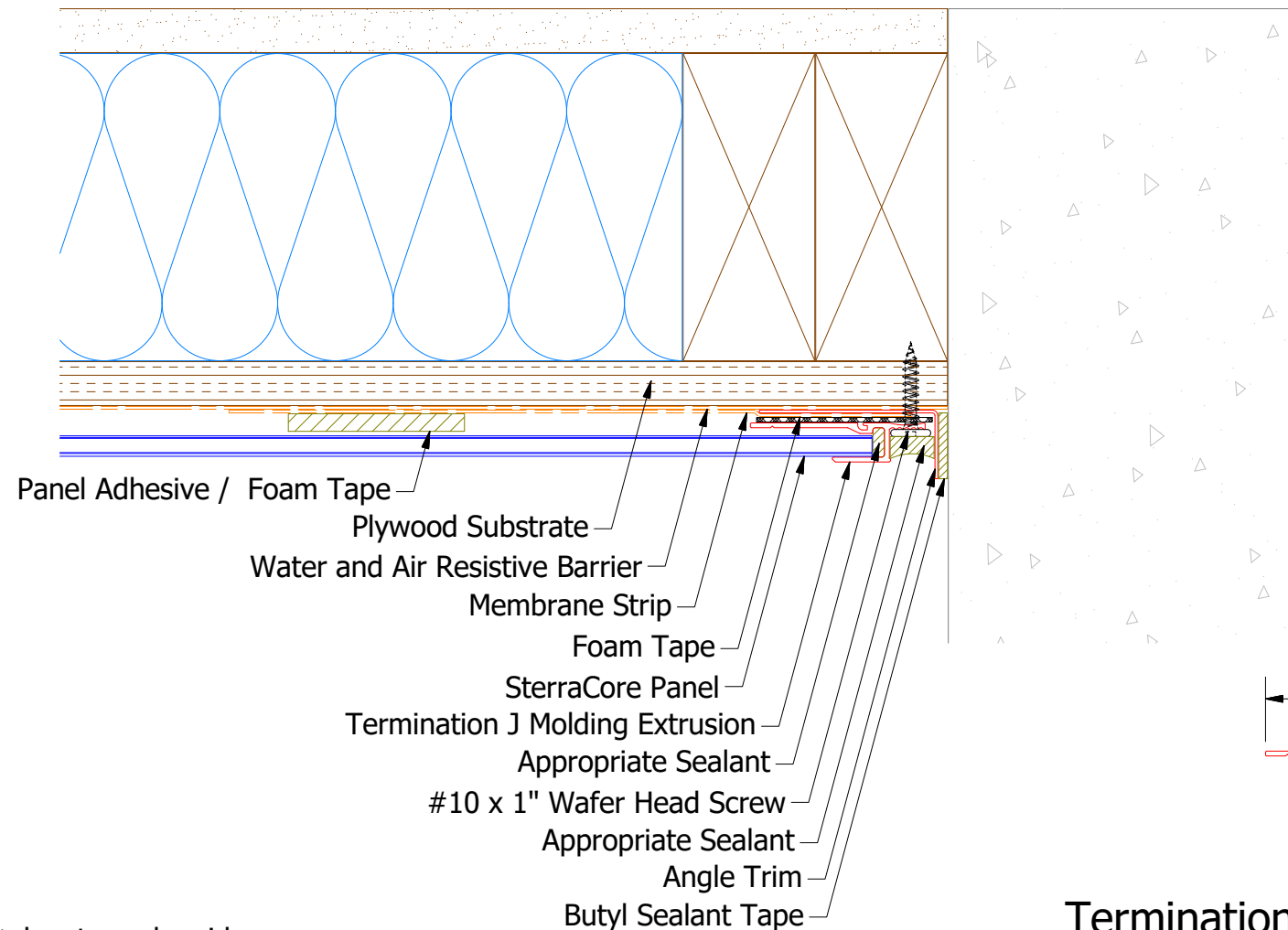
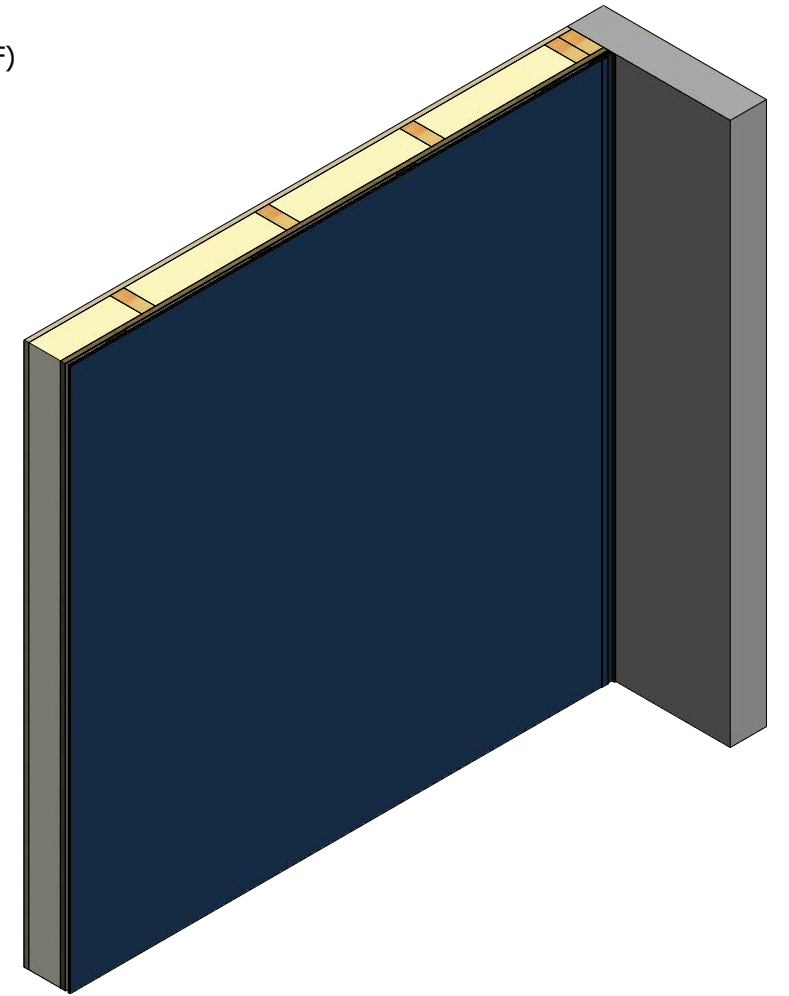
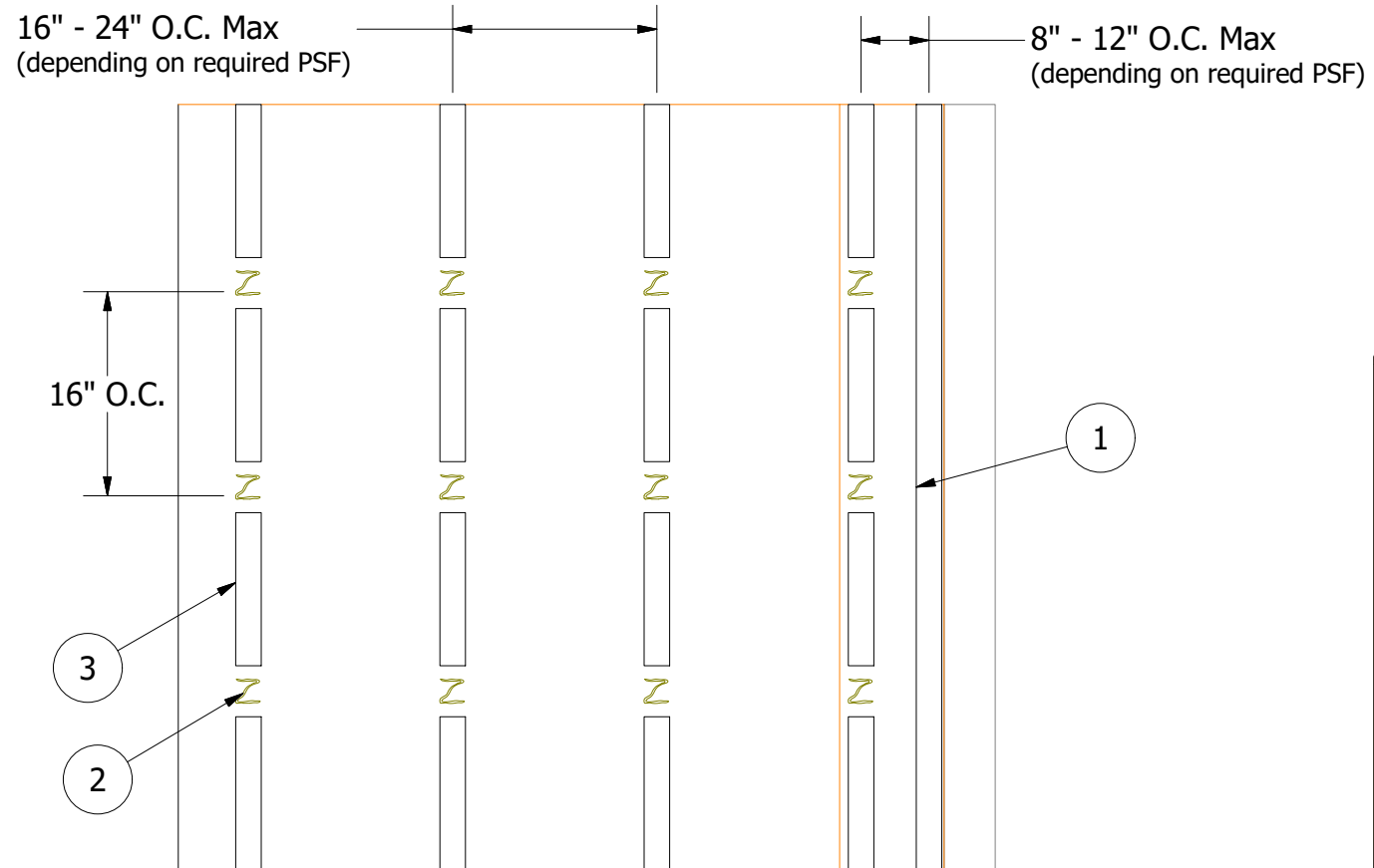


ATAS INTERNATIONAL, INC
Allentown PA
610-395-8445
Mesa AZ
480-558-7210

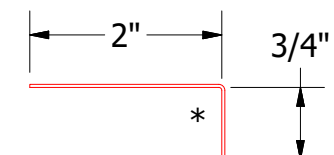
TITLE			
SterraCore Starting Endwall Detail			
DWG. NO.	DR	KRK	DATE
	APP		DATE
MATERIAL	SH. SIZE	B	SCALE
			X:X

Note: * denotes color side.

- (1) Termination J Molding Extrusion installed on Continuous Foam Tape.
- (2) Panel Adhesive applied 16"-24" O.C. Horizontally and 16" O.C. Vertically.
- (3) Foam Tape installed Vertically in between Panel Adhesive.

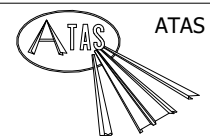


Termination J Molding Extrusion



Angle Trim

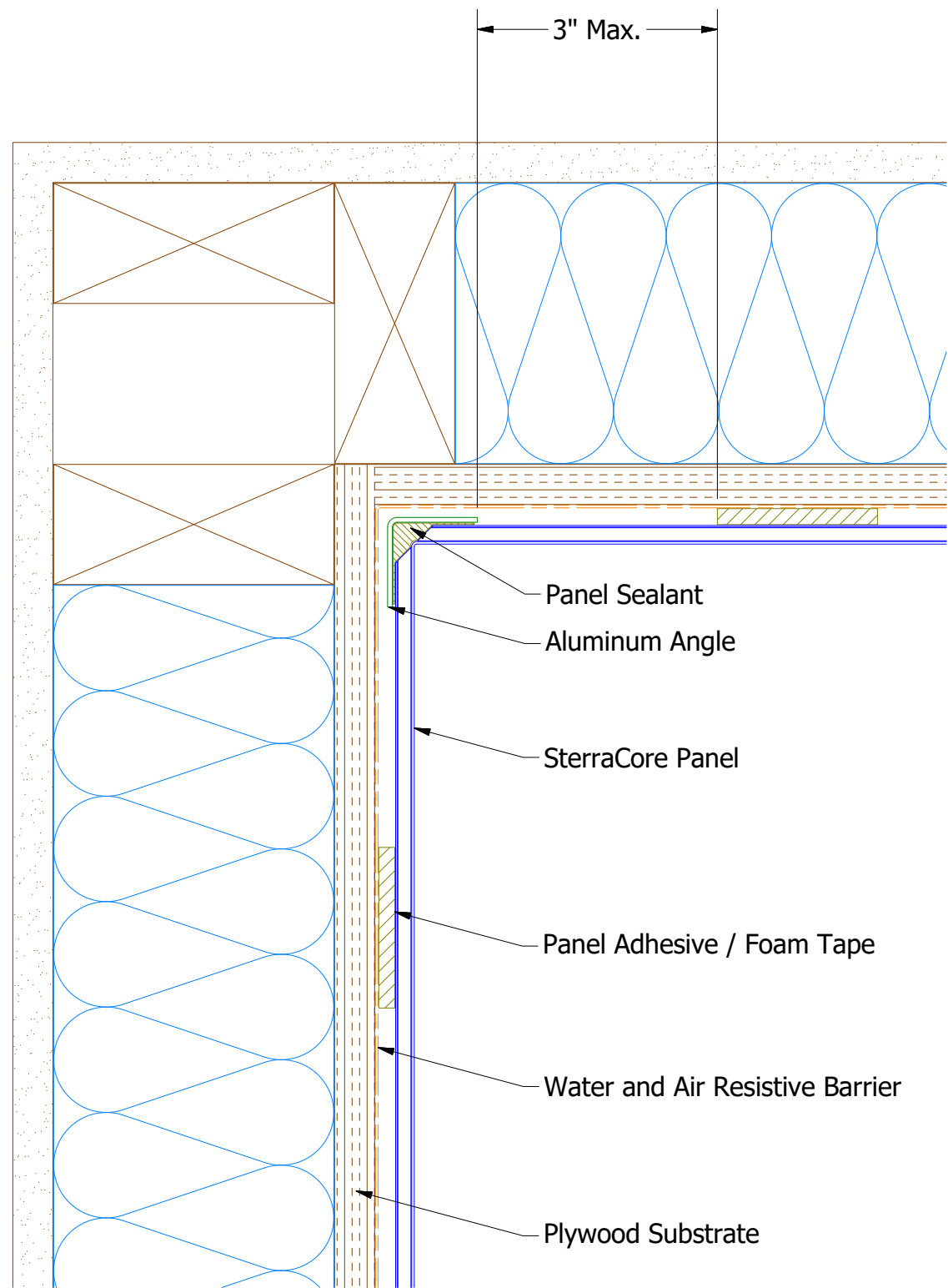
SterraCore Panel



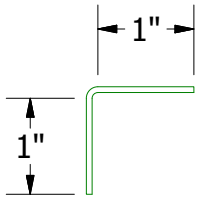
ATAS INTERNATIONAL, INC
Allentown PA
610-395-8445
Mesa AZ
480-558-7210

TITLE			
SterraCore Ending Endwall Detail			
DWG. NO.		DR	DATE
		KRK	4/4/2022
		APP	DATE
MATERIAL		SH. SIZE	SCALE
		B	X:X

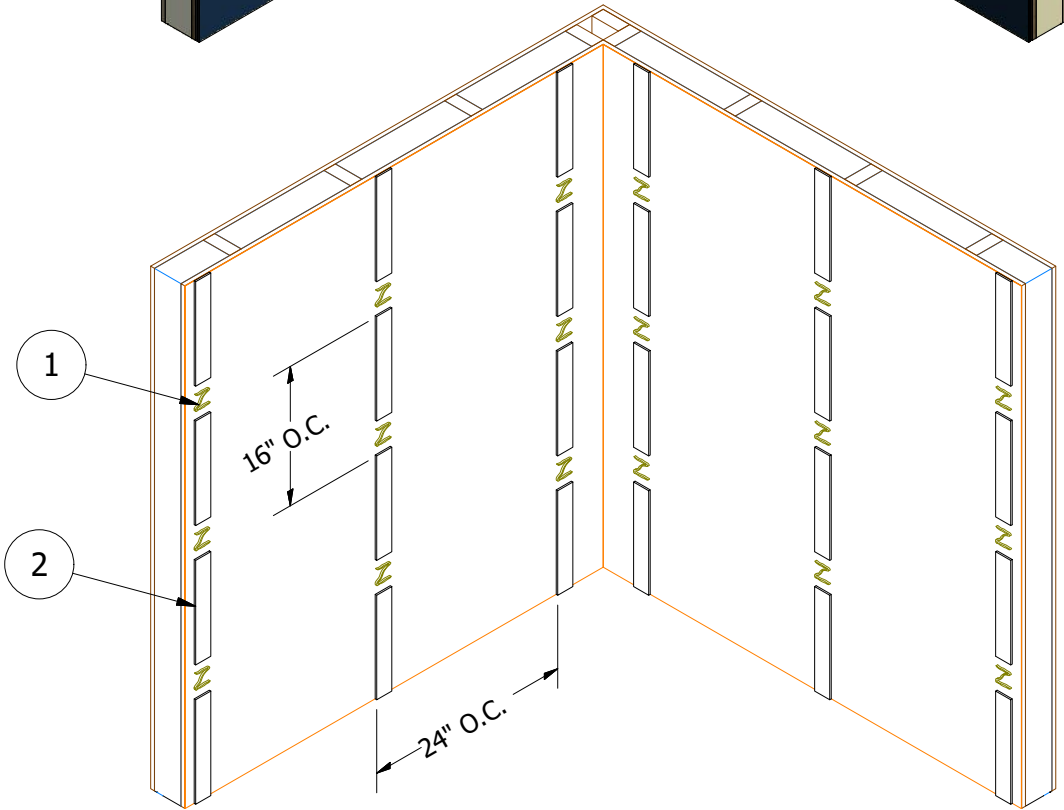
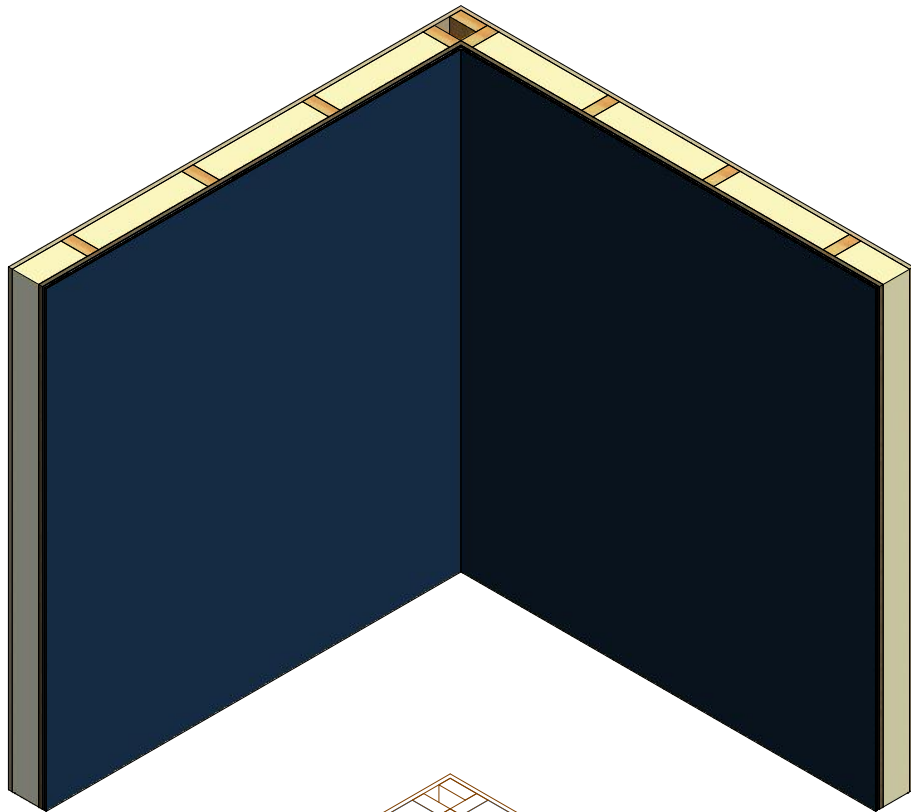
Note: * denotes color side.



SterraCore Panel

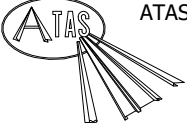


Aluminum Angle

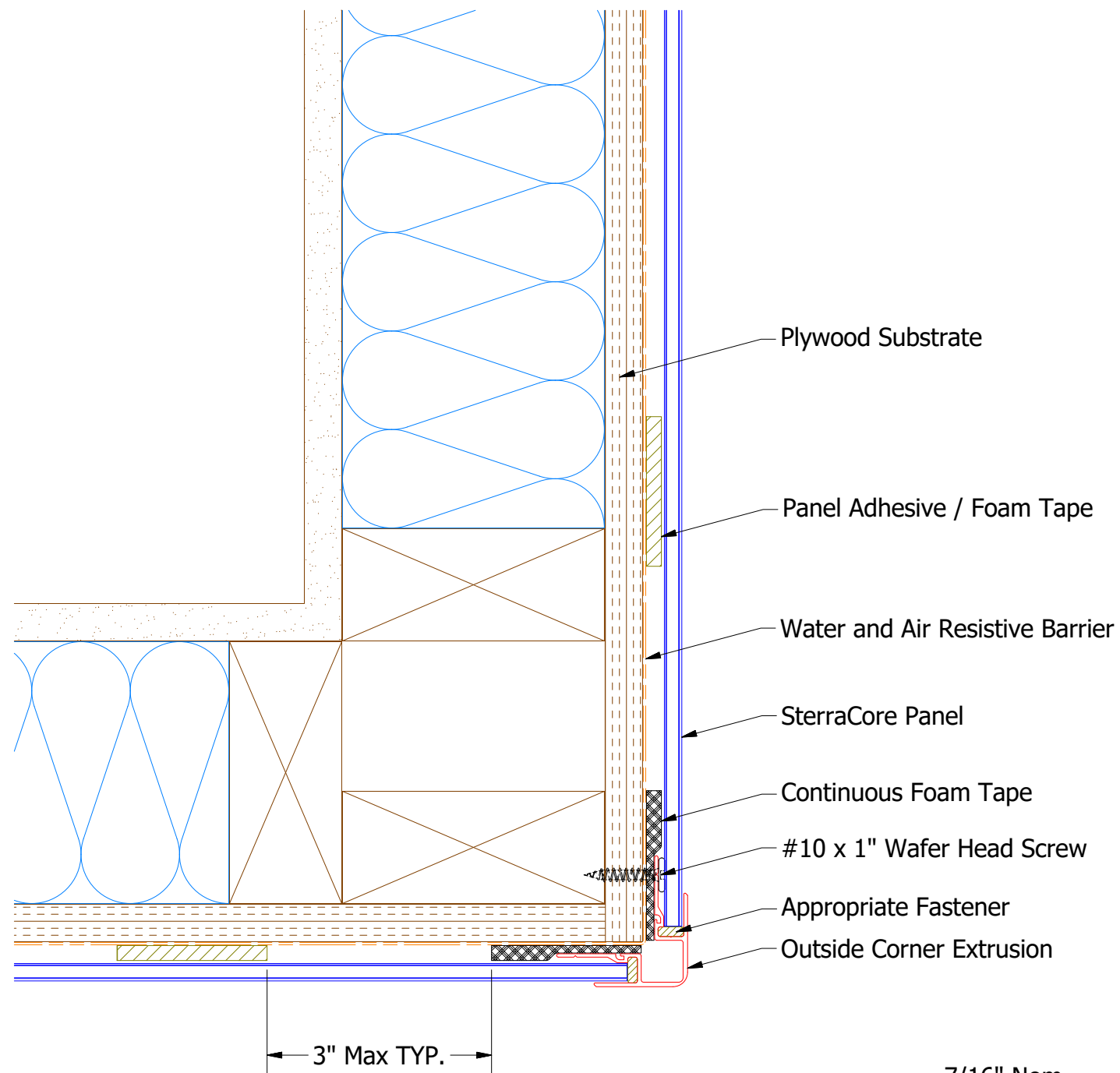


(1) Panel Adhesive applied 24" O.C. Horizontally and 16" O.C. Vertically.

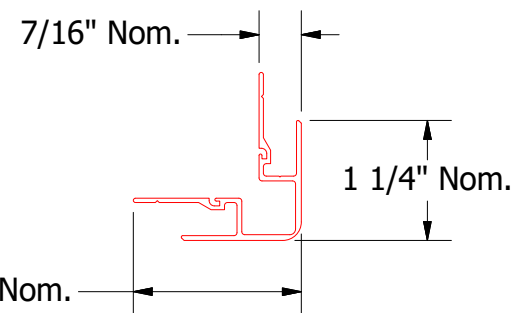
(2) Foam Tape installed Vertically in between Panel Adhesive.

	ATAS INTERNATIONAL, INC	
	Allentown PA 610-395-8445 Mesa AZ 480-558-7210	
TITLE		
SterraCore Routed Inside Corner Detail		
DWG. NO.	DR KRK	DATE 4/6/2022
APP		DATE
MATERIAL		
SH. SIZE	B	SCALE X:X

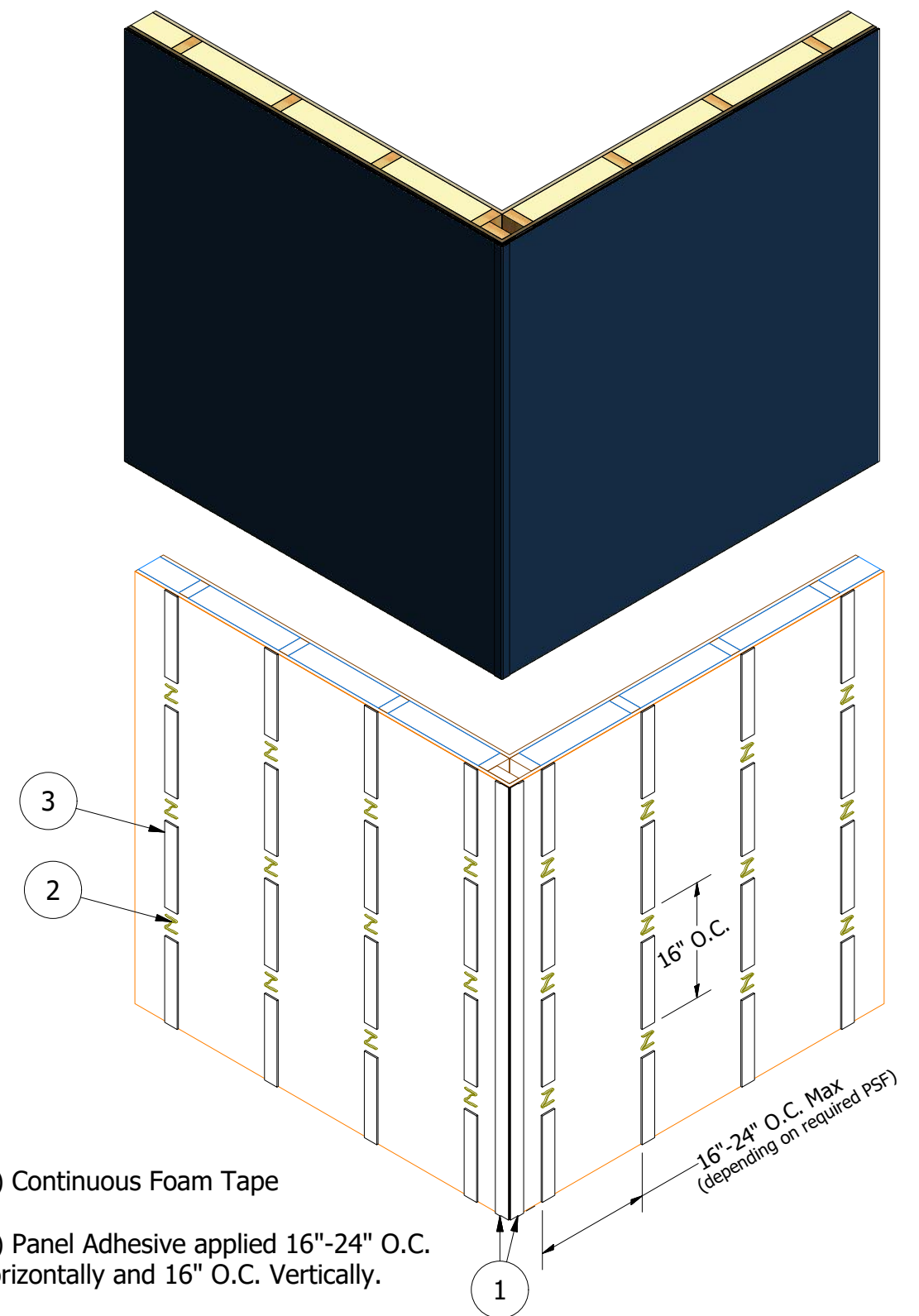
REV. NO.	DATE	DESCRIPTION OF REVISION	BY	APP



SterraCore Panel



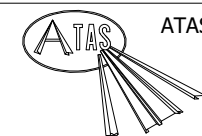
Outside Corner Extrusion



(1) Continuous Foam Tape

(2) Panel Adhesive applied 16"-24" O.C. Horizontally and 16" O.C. Vertically.

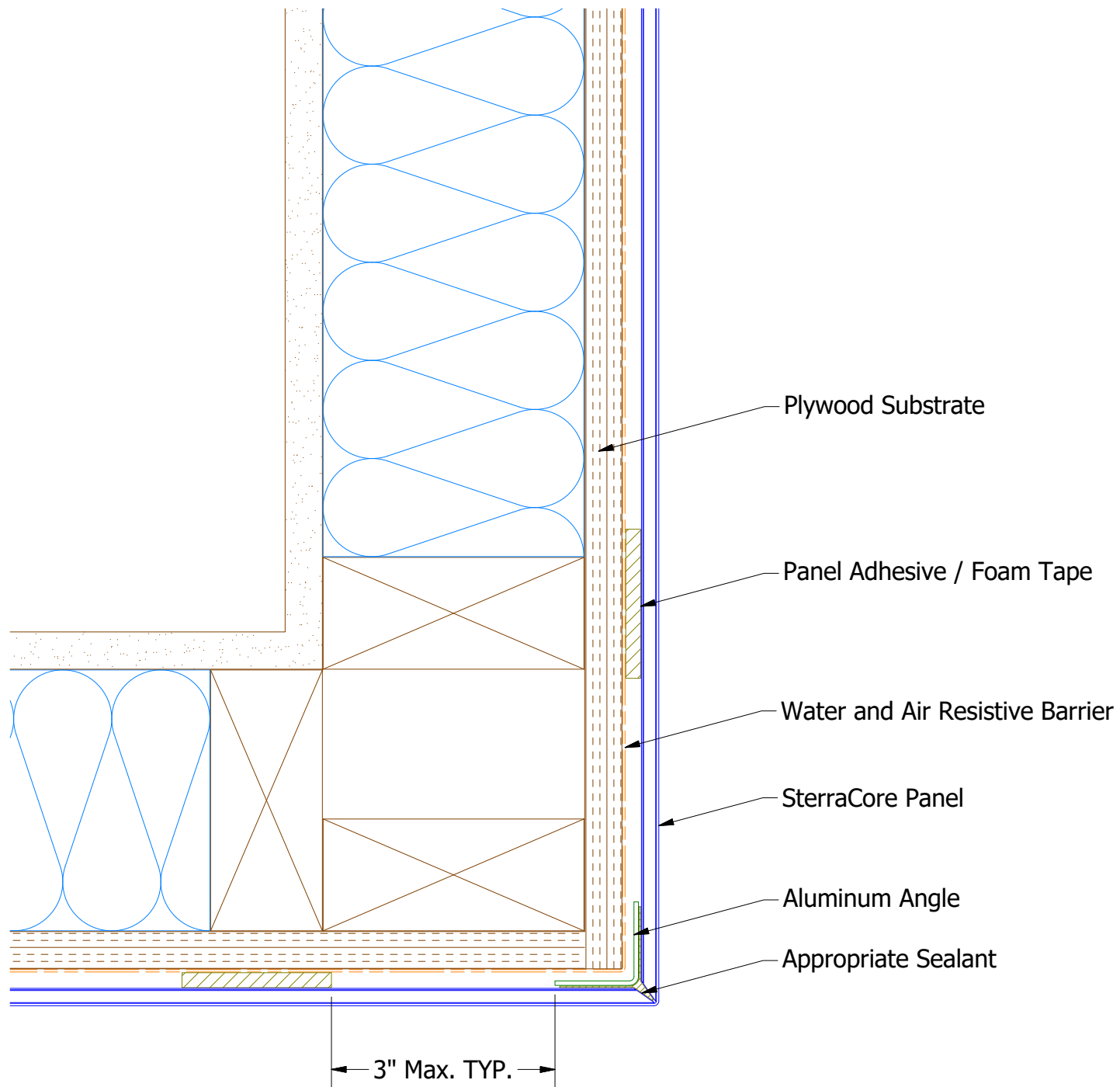
(3) Foam Tape Installed Vertically in between Panel Adhesive.




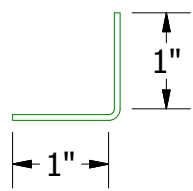
ATAS INTERNATIONAL, INC
Allentown PA
610-395-8445
Mesa AZ
480-558-7210

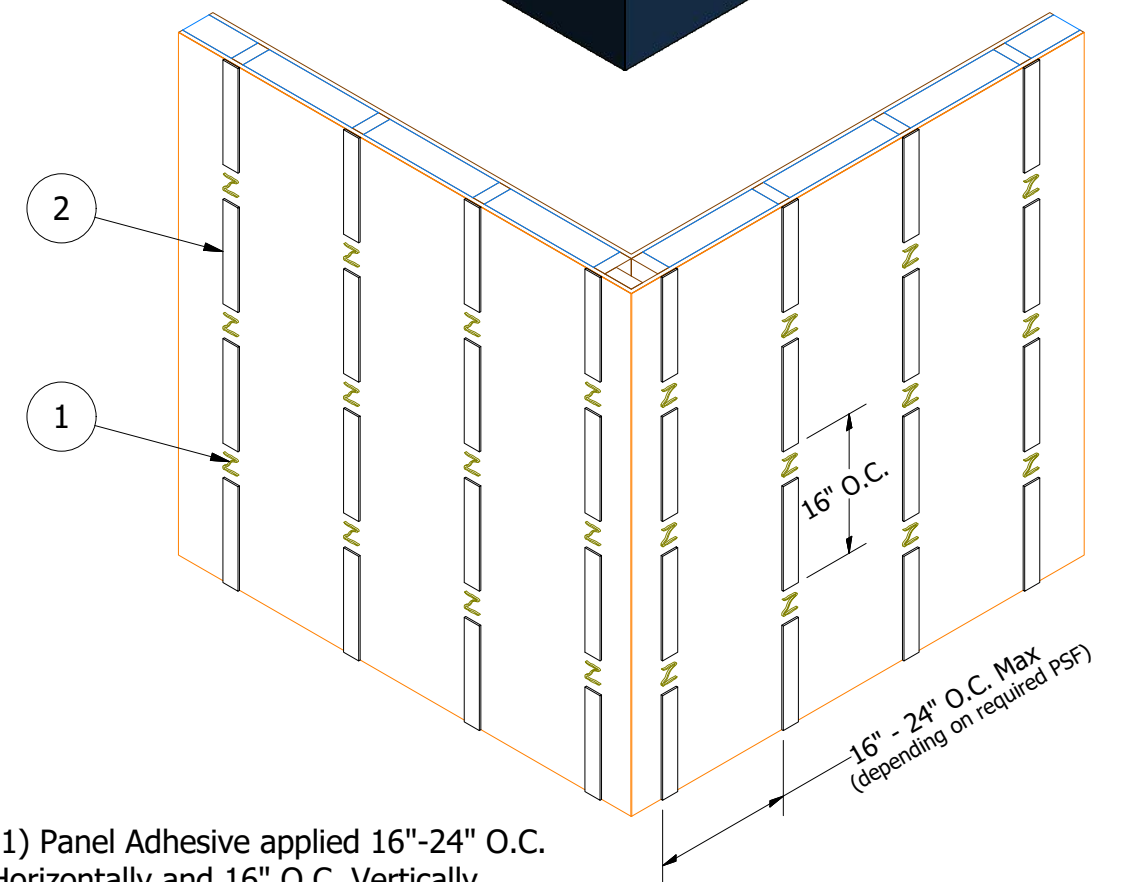
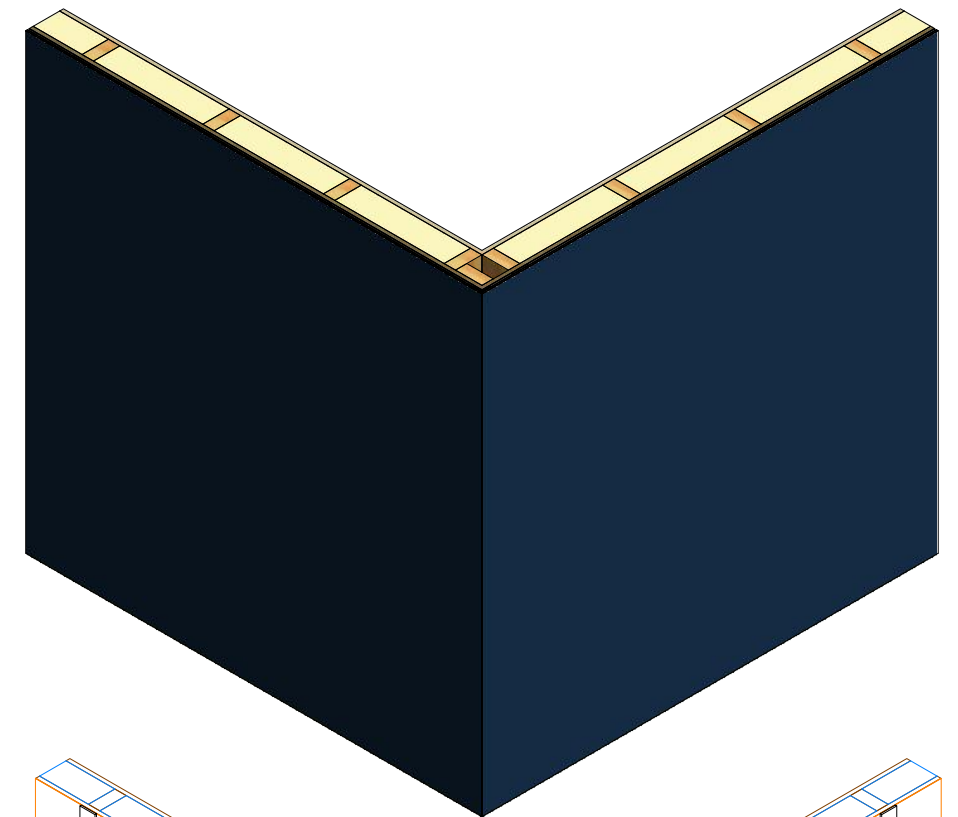
TITLE			
SterraCore Extrusion Outside Corner Detail			
DWG. NO.	DR	KRK	DATE 4/8/2022
MATERIAL	APP		DATE
SH. SIZE	B	SCALE	X:X

REV. NO.	DATE	DESCRIPTION OF REVISION	BY	APP



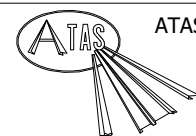

SterraCore Panel


Aluminum Angle



(1) Panel Adhesive applied 16"-24" O.C. Horizontally and 16" O.C. Vertically.

(2) Foam Tape Installed Vertically in between Panel Adhesive.



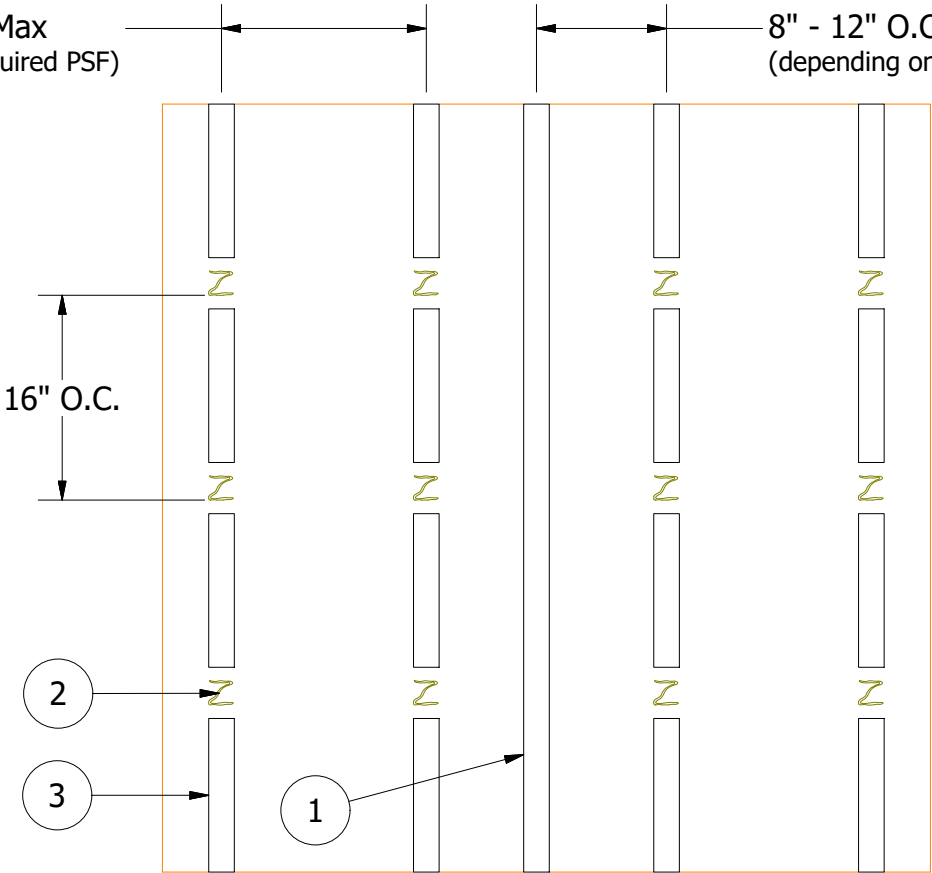
ATAS INTERNATIONAL, INC
Allentown PA
610-395-8445
Mesa AZ
480-558-7210

TITLE				
REV. NO.	DATE	DESCRIPTION OF REVISION	BY	APP

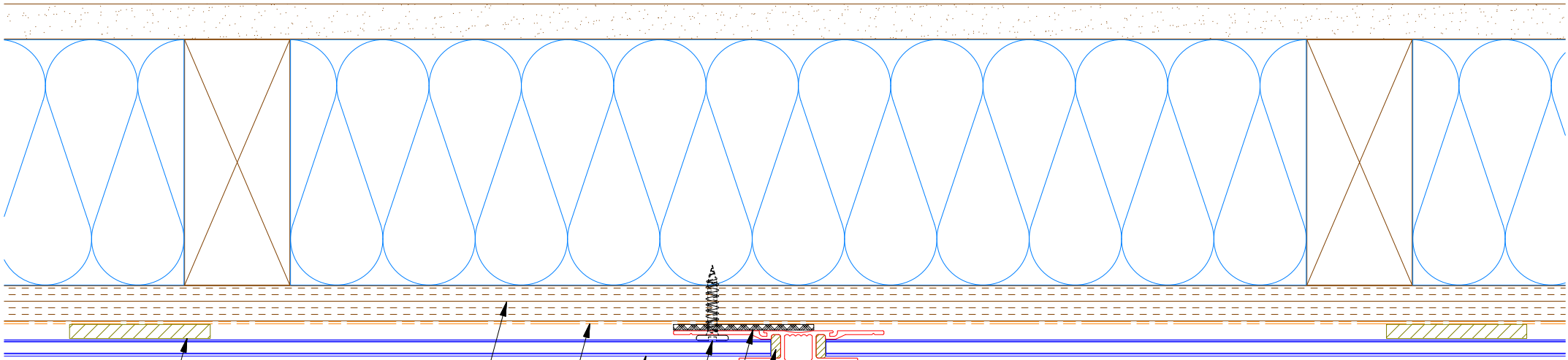
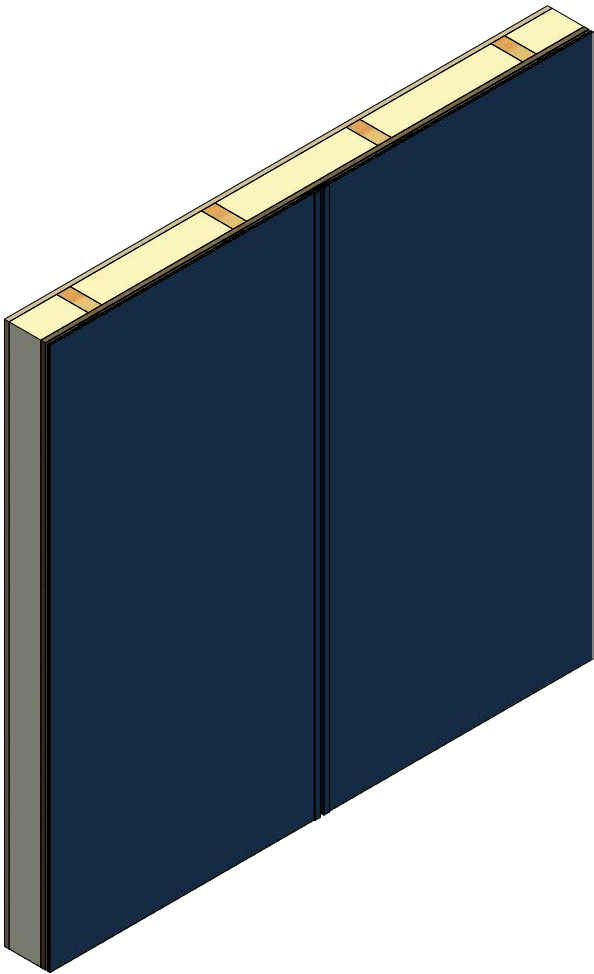
DWG. NO.		DR	KRK	DATE	4/8/2022
MATERIAL		APP		DATE	
		SH. SIZE	B	SCALE	X:X

16" - 24" O.C. Max
(depending on required PSF)

8" - 12" O.C. Max
(depending on required PSF)



- (1) Reveal H Molding Extrusion installed on Vertical Foam Tape.
- (2) Panel Adhesive applied 16"-24" O.C. Horizontally and 16" O.C. Vertically.
- (3) Foam Tape installed Vertically in between Panel Adhesive.



Panel Adhesive / Foam Tape

Plywood Substrate

Water and Air Resistive Barrier

SterraCore Panel

#10 x 1" Wafer Head Screw

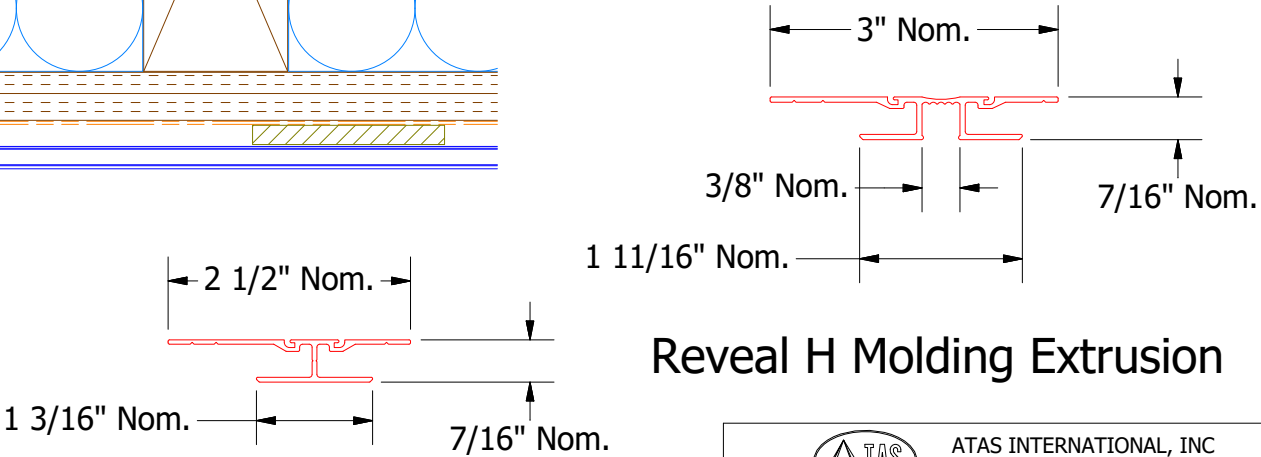
Foam Tape

Appropriate Sealant


Reveal H Molding Extrusion



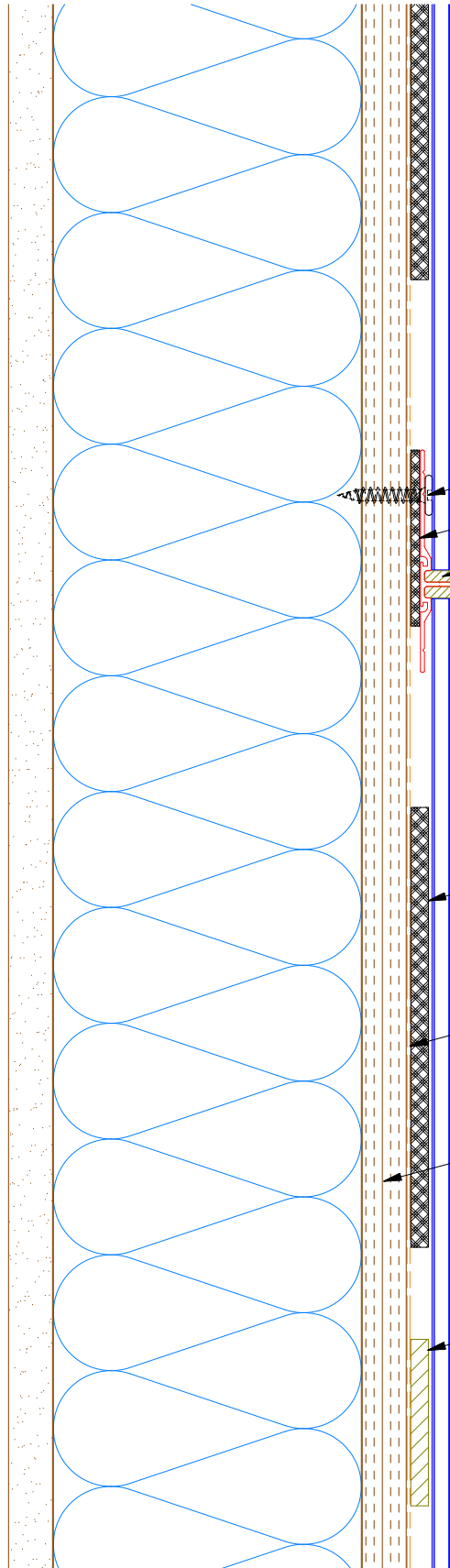
SterraCore Panel



Reveal H Molding Extrusion

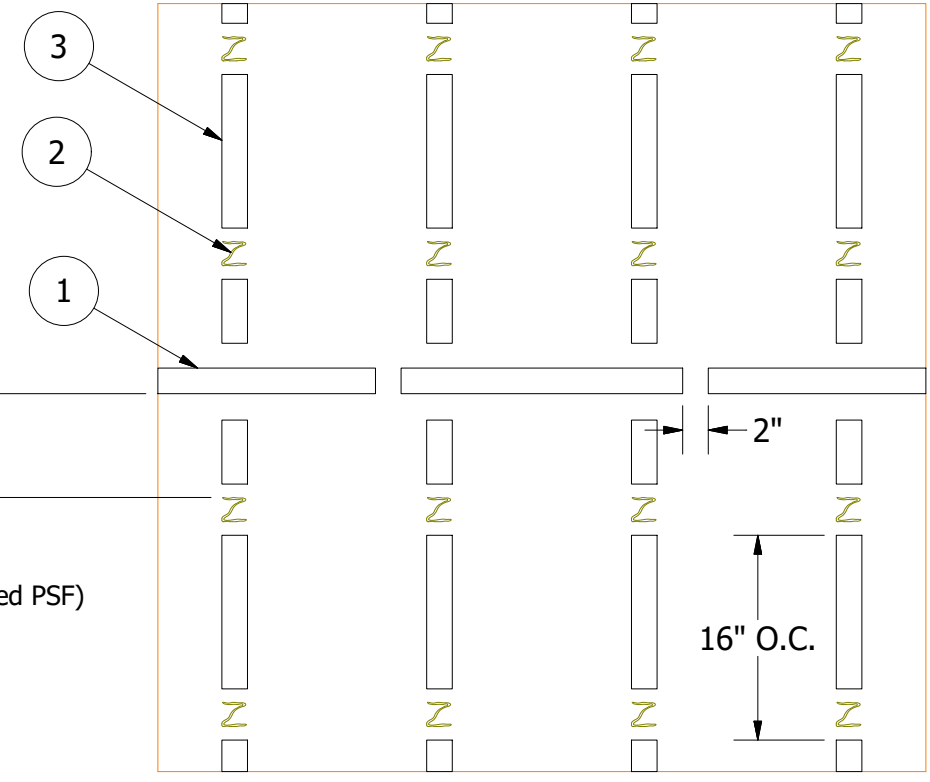
		ATAS INTERNATIONAL, INC Allentown PA 610-395-8445 Mesa AZ 480-558-7210	
TITLE SterraCore Horizontal Transition Detail			
DWG. NO.		DR KRK	DATE 4/12/2022
MATERIAL		APP	DATE
		SH. SIZE B	SCALE X:X

REV. NO.	DATE	DESCRIPTION OF REVISION	BY	APP



- #10 x 1" Wafer Head Screw
- Foam Tape
- Appropriate Sealant
- H Molding Extrusion
- SterraCore Panel
- Foam Tape
- Water and Air Resistive Barrier
- Plywood Substrate
- Panel Adhesive

16" - 24" O.C. Max
(depending on required PSF)

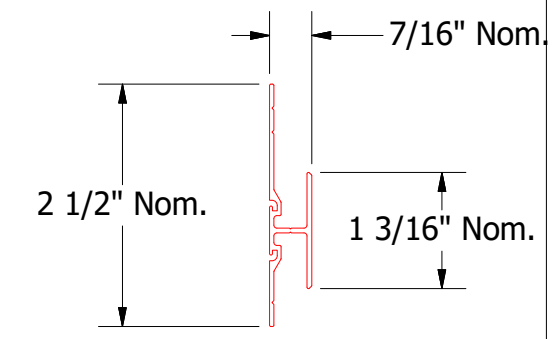
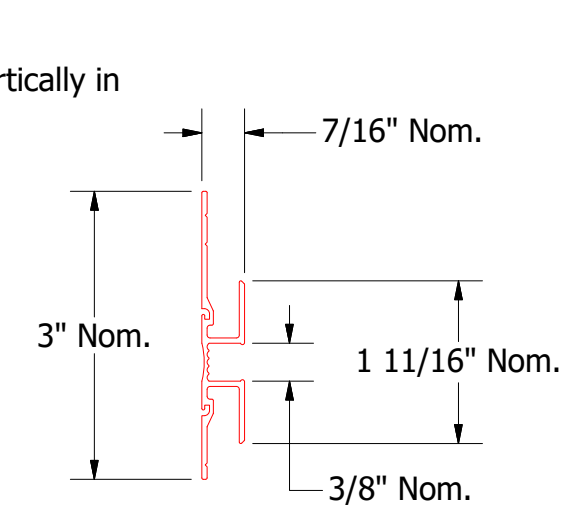
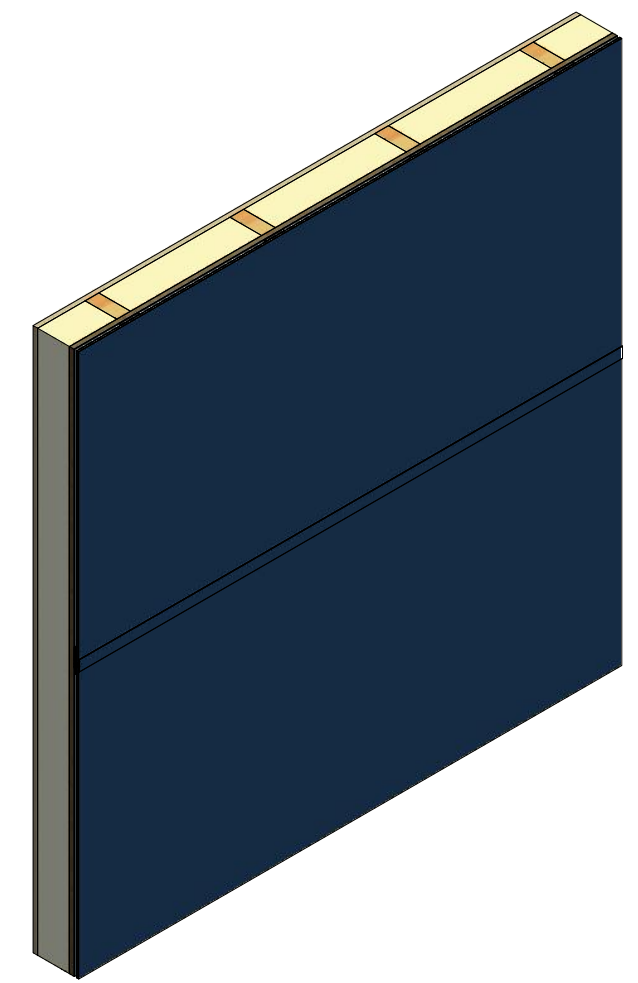


8" - 12" O.C. Max
(depending on required PSF)

(1) H Molding Extrusion installed on Horizontal Foam Tape 2" min. gap at 24" O.C.

(2) Panel Adhesive applied 16"-24" O.C. Horizontally and 16" O.C. Vertically.

(3) Foam Tape installed Vertically in between Panel Adhesive.



H Molding Extrusion



SterraCore Panel

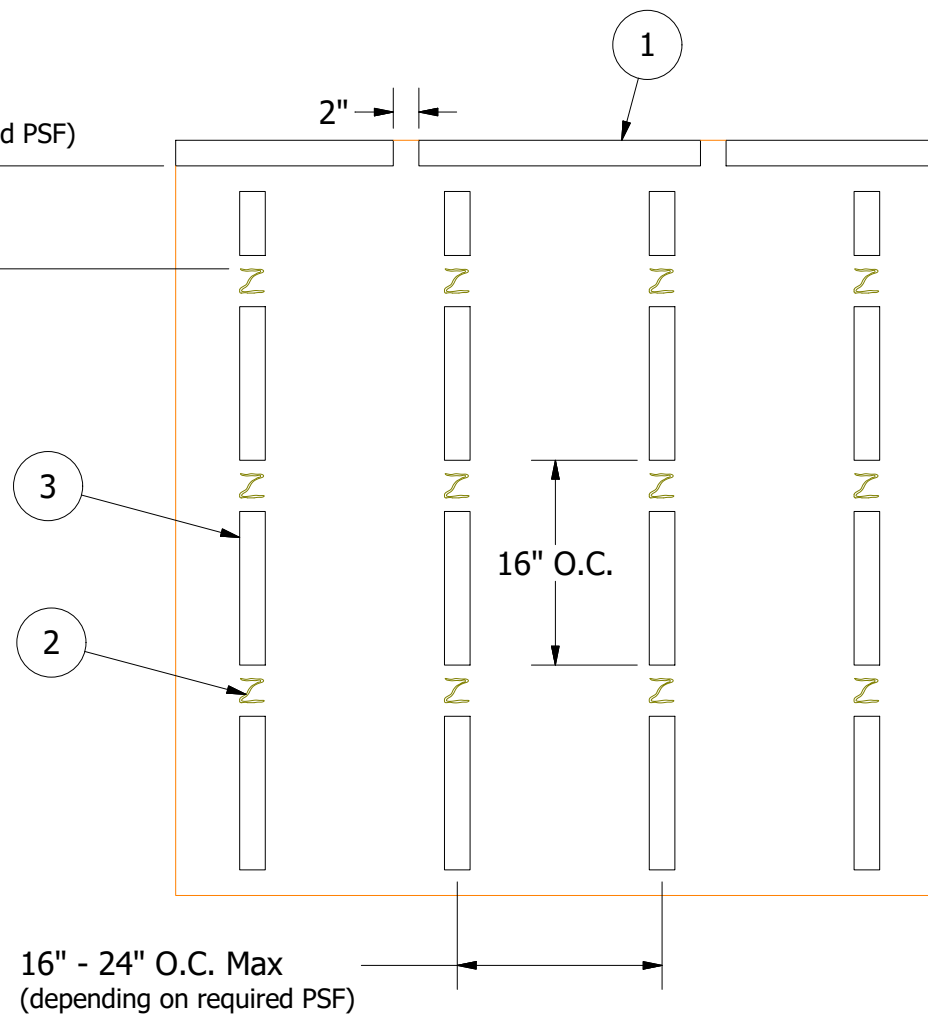
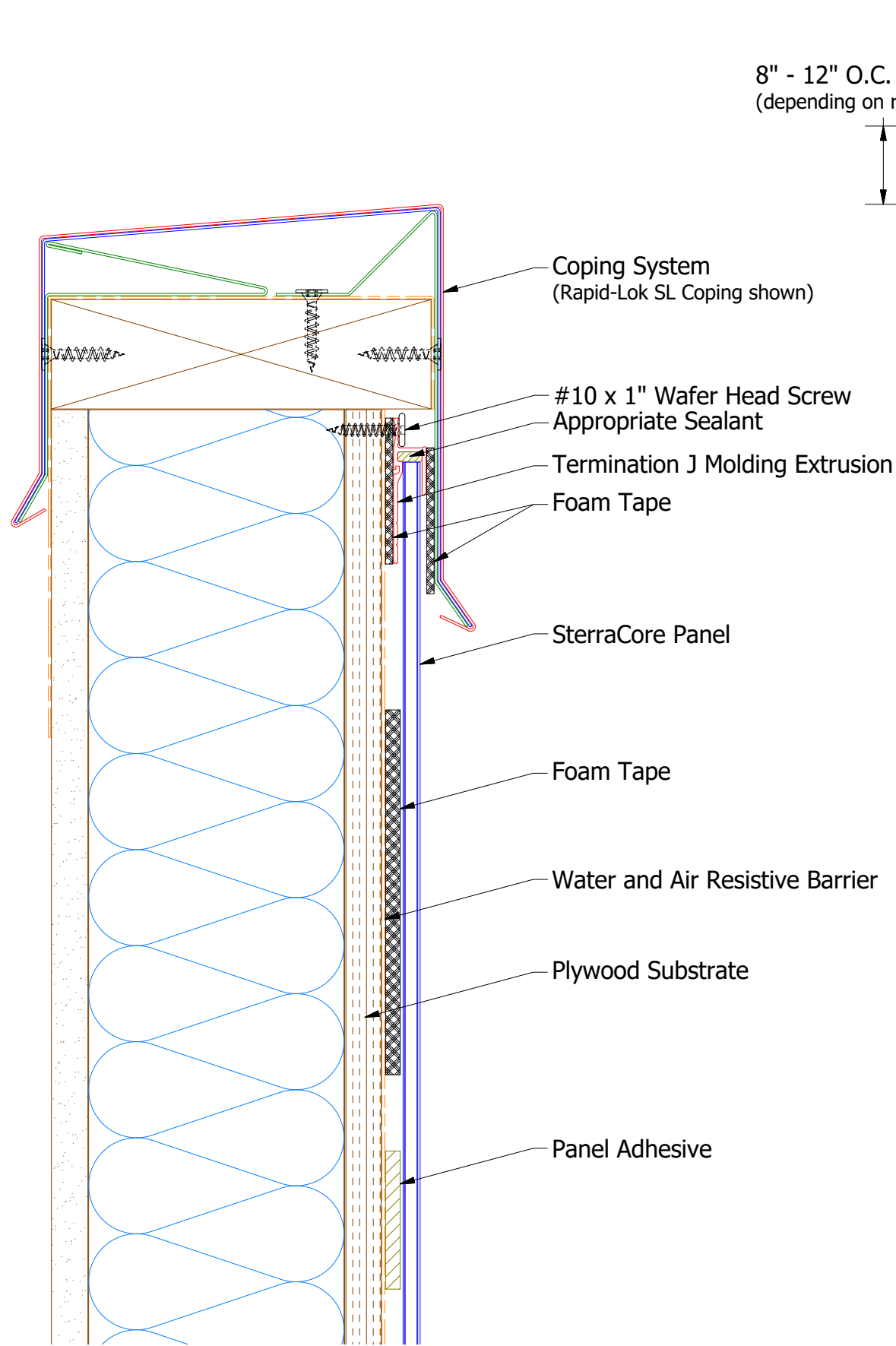
Reveal H Molding Extrusion



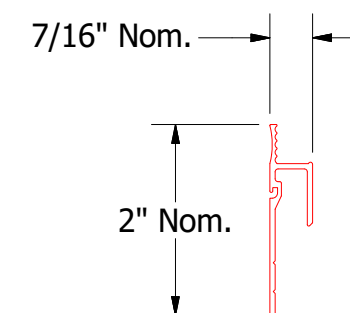
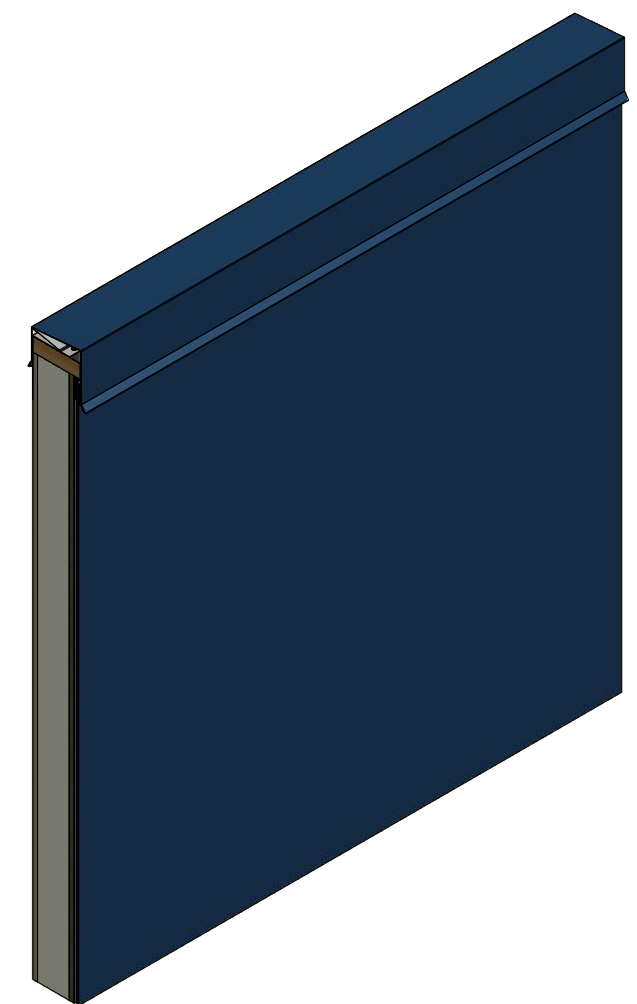
ATAS INTERNATIONAL, INC
Allentown PA
610-395-8445
Mesa AZ
480-558-7210

TITLE			
SterraCore Vertical Transition Detail			
DWG. NO.		DR	DATE
		KRK	4/12/2022
		APP	DATE
MATERIAL		SH. SIZE	SCALE
		B	X:X

REV. NO.	DATE	DESCRIPTION OF REVISION	BY	APP



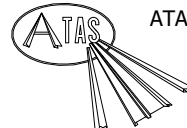
- (1) Termination J Molding Extrusion installed on Horizontal Foam Tape 2" min. gap at 24" O.C.
- (2) Panel Adhesive applied 16"-24" O.C. Horizontally and 16" O.C. Vertically.
- (3) Foam Tape installed Vertically in between Panel Adhesive.



Termination J Molding Extrusion

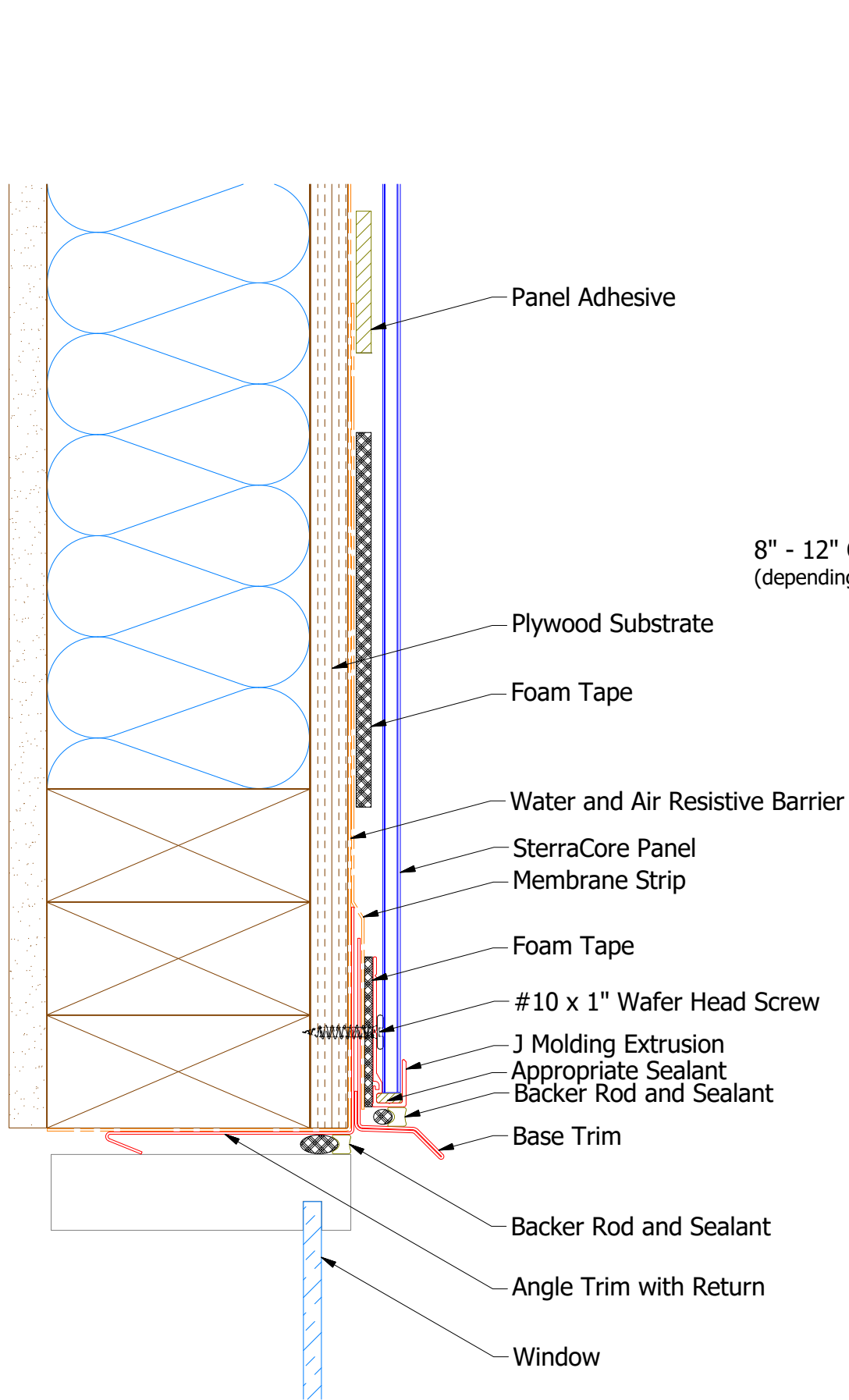
SterraCore Panel

REV. NO.	DATE	DESCRIPTION OF REVISION	BY	APP	TITLE	DR	DATE
					DWG. NO.	KRK	4/12/2022
					MATERIAL	APP	DATE
					SH. SIZE	B	SCALE X:X



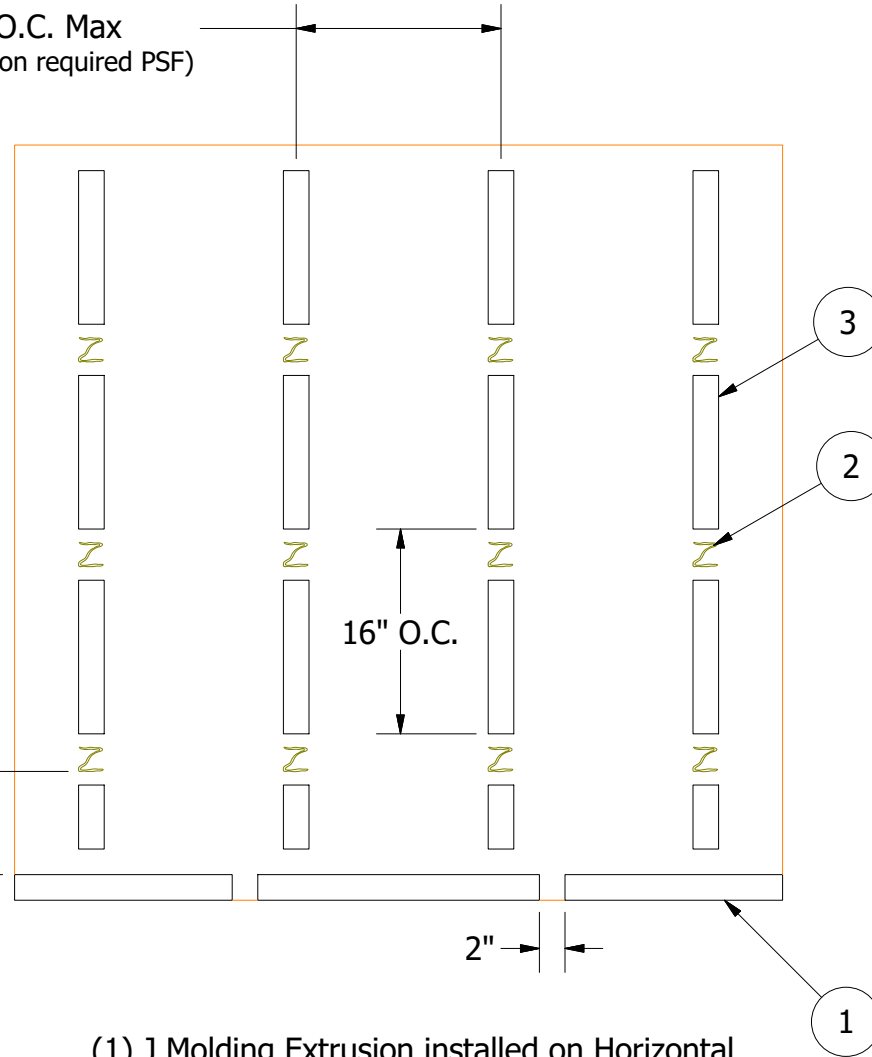
ATAS INTERNATIONAL, INC
Allentown PA
610-395-8445
Mesa AZ
480-558-7210

TITLE
SterraCore Top of Wall Detail



16" - 24" O.C. Max
(depending on required PSF)

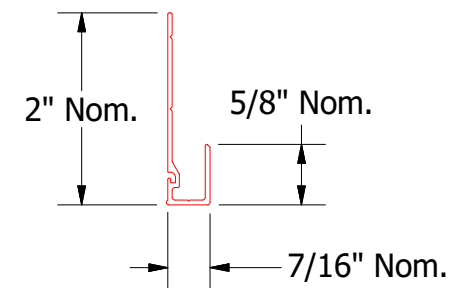
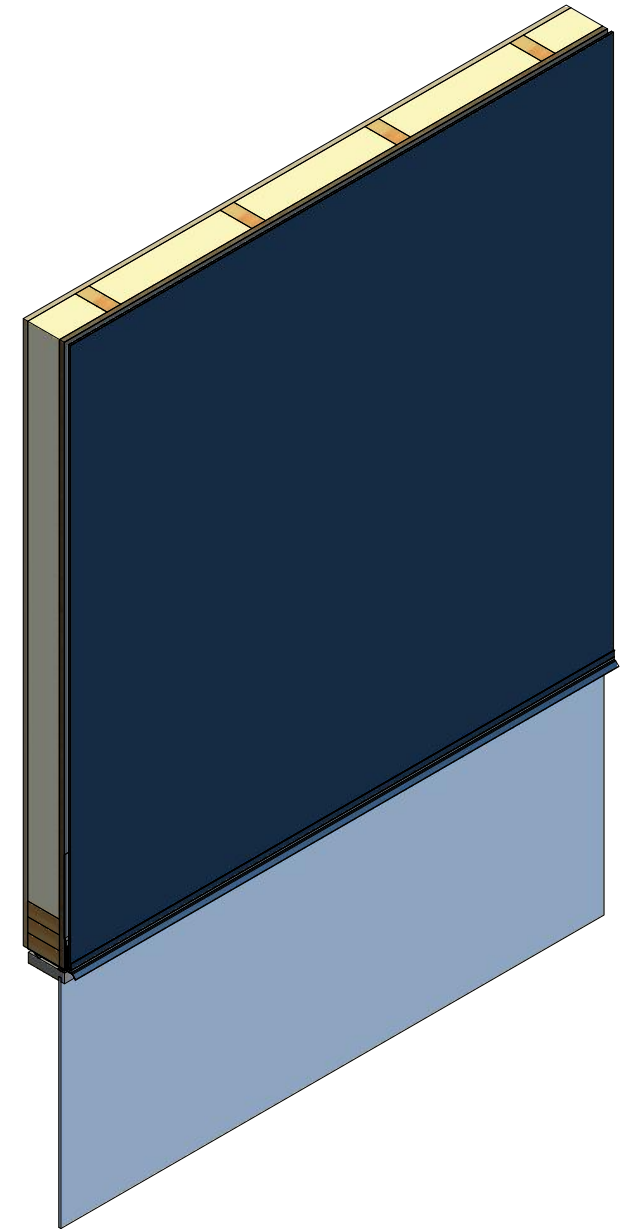
8" - 12" O.C. Max
(depending on required PSF)



(1) J Molding Extrusion installed on Horizontal Foam Tape 2" min. gap at 24" O.C.

(2) Panel Adhesive applied 16"-24" O.C. Horizontally and 16" O.C. Vertically.

(3) Foam Tape installed Vertically in between Panel Adhesive.



J Molding Extrusion

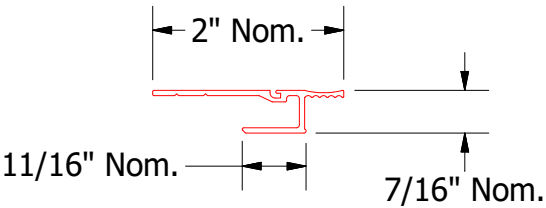
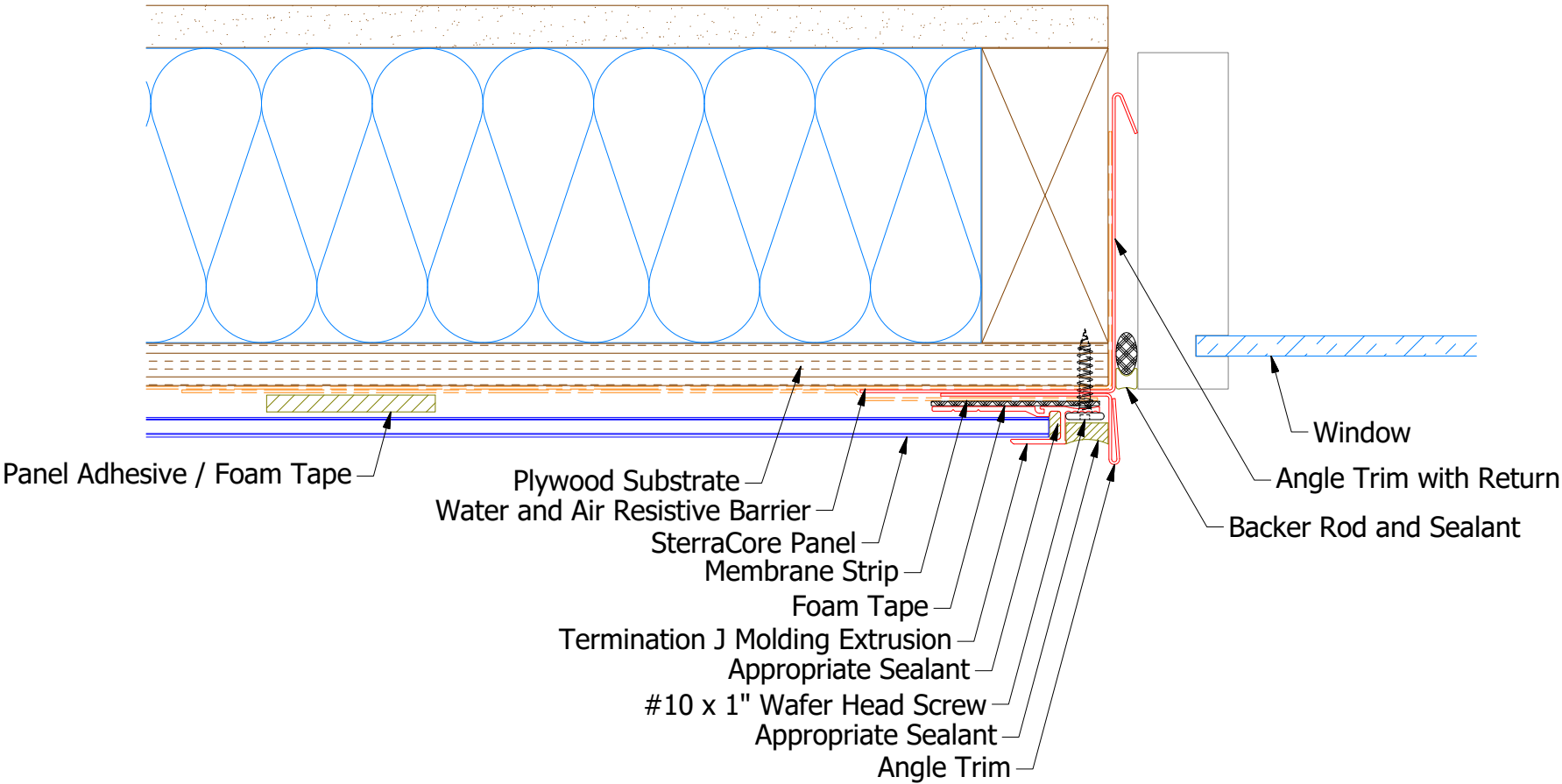
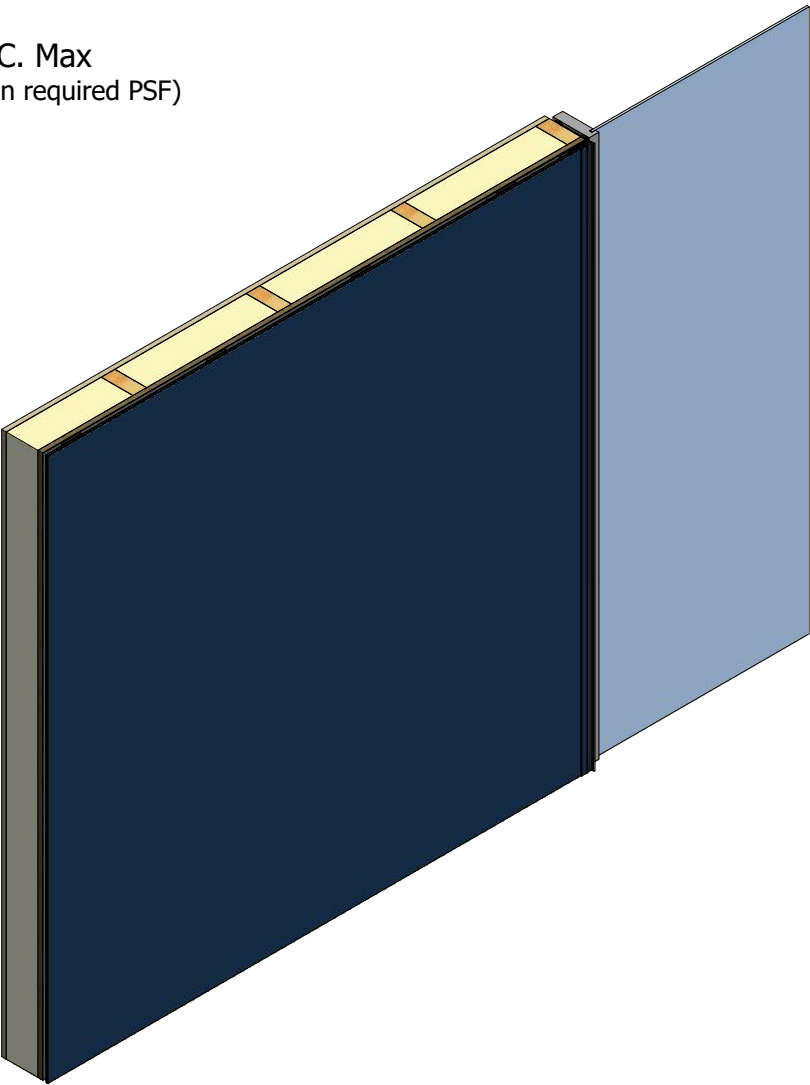
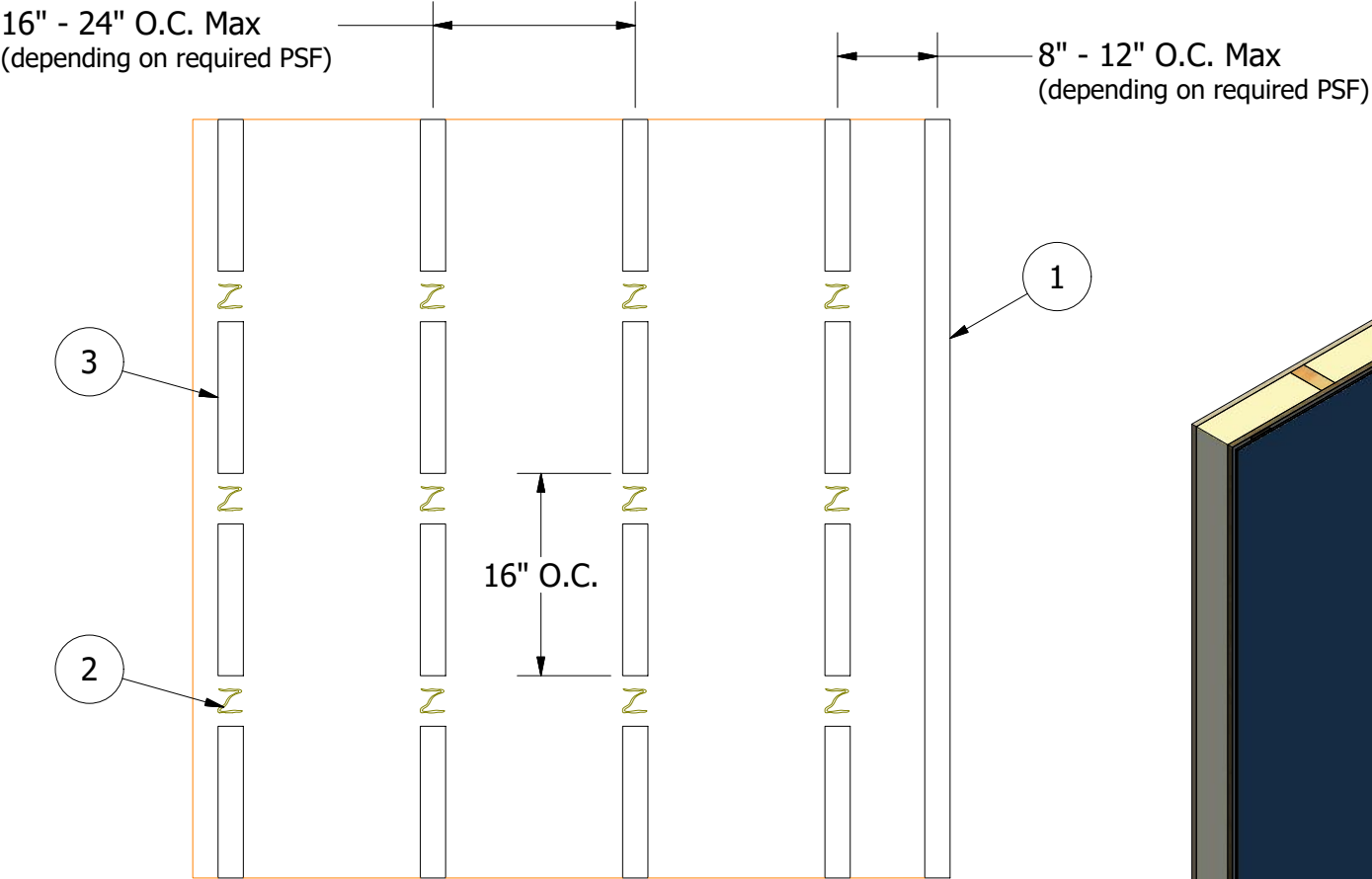
SterraCore Panel

REV. NO.		DATE	DESCRIPTION OF REVISION	BY	APP
DWG. NO.		DR	KRK	DATE	4/12/2022
MATERIAL		APP		DATE	
SH. SIZE		B	SCALE	X:X	

ATAS ATAS INTERNATIONAL, INC
Allentown PA
610-395-8445
Mesa AZ
480-558-7210

SterraCore Head Detail

- (1) Termination J Molding Extrusion installed on Vertical Foam Tape.
- (2) Panel Adhesive applied 16"-24" O.C. Horizontally and 16" O.C. Vertically.
- (3) Foam Tape installed Vertically in between Panel Adhesive.




Termination J Molding Extrusion



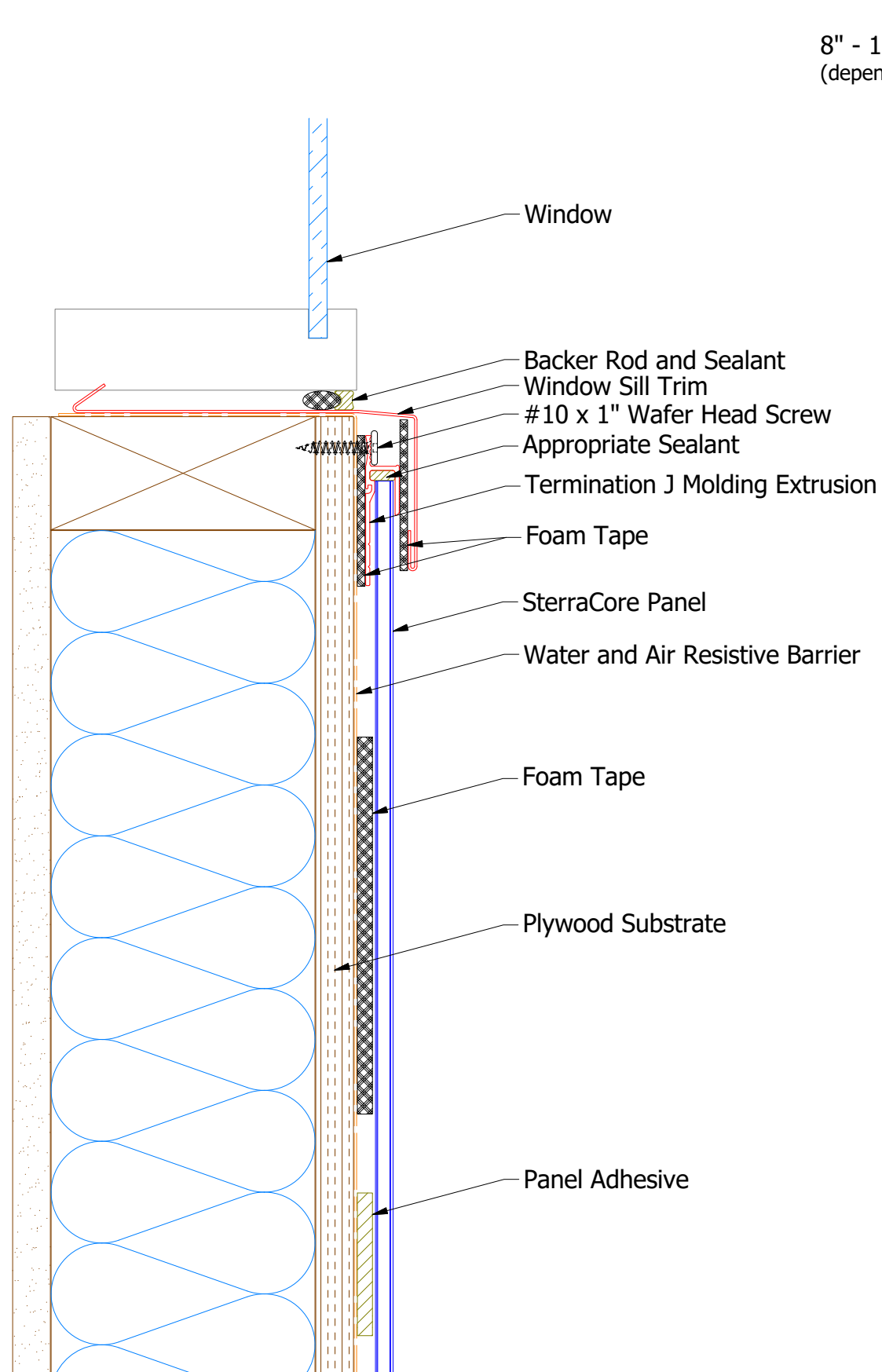
SterraCore Panel

REV. NO.		DATE	DESCRIPTION OF REVISION	BY	APP
DWG. NO.		DR	KRK	DATE	4/12/2022
MATERIAL		APP		DATE	
SH. SIZE		B	SCALE	X:X	

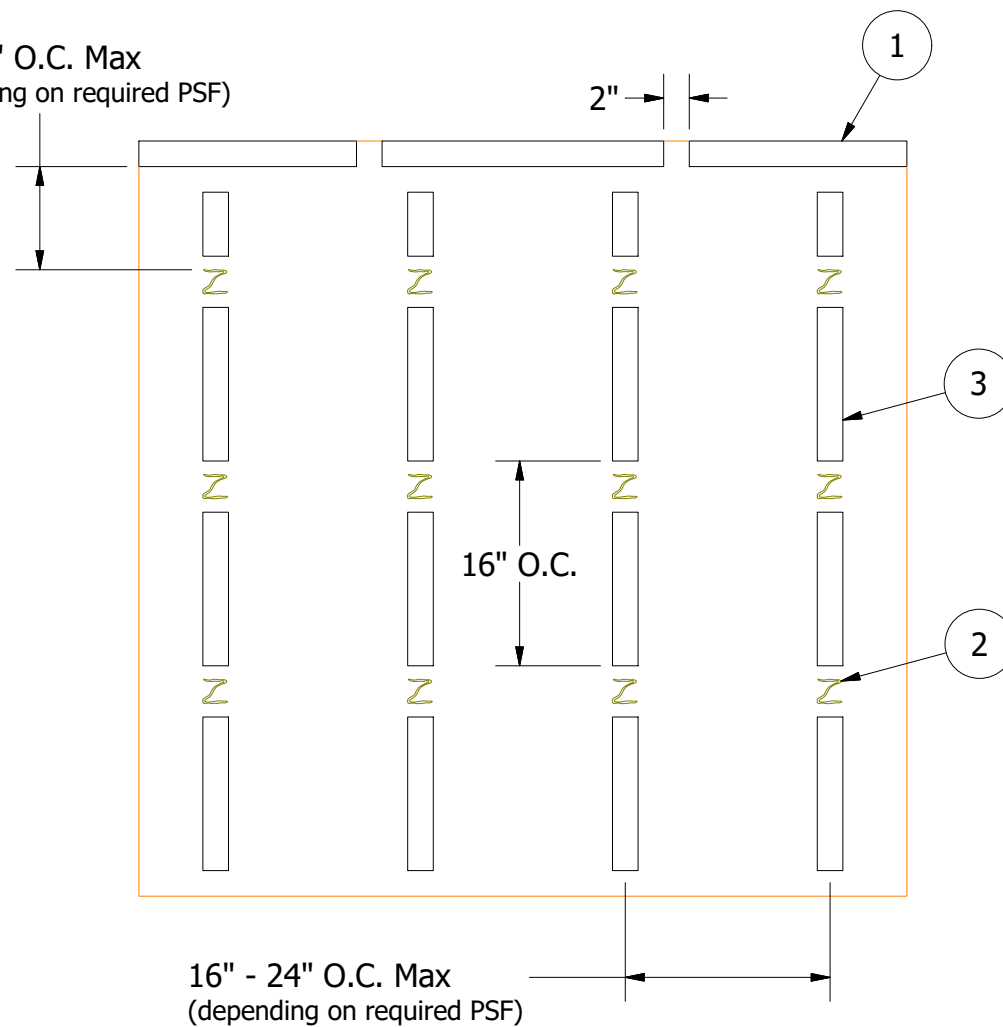


ATAS INTERNATIONAL, INC
Allentown PA
610-395-8445
Mesa AZ
480-558-7210

TITLE	
SterraCore Jamb Detail	



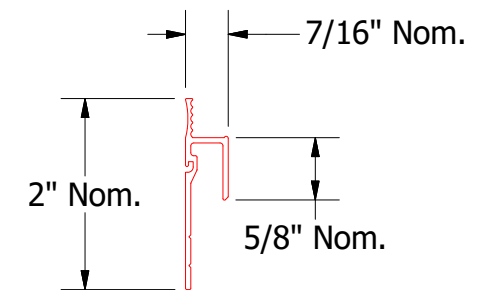
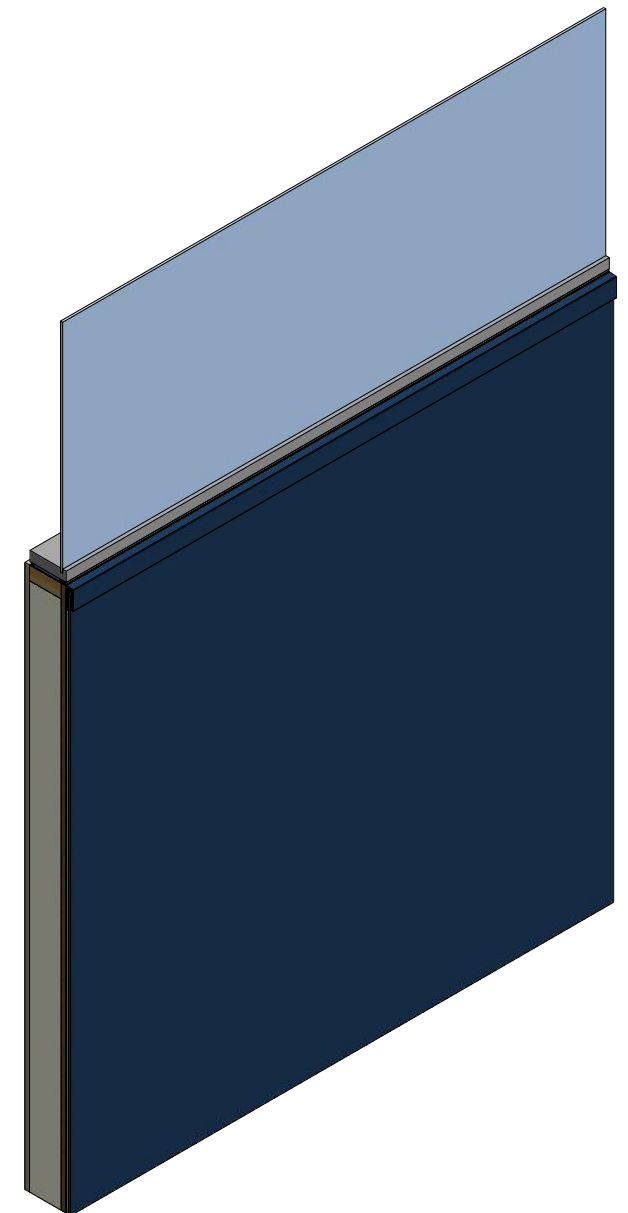
8" - 12" O.C. Max
(depending on required PSF)



(1) Termination J Molding Extrusion installed on Horizontal Foam Tape 2" min. gap at 24" O.C.

(2) Panel Adhesive applied 16"-24" O.C. Horizontally and 16" O.C. Vertically.

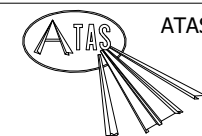
(3) Foam Tape installed Vertically in between Panel Adhesive.



Termination J Molding Extrusion

SterraCore Panel

					TITLE					SterraCore Window Sill Detail							
					DWG. NO.					DR		DATE					
										KPK		4/12/2022					
										APP		DATE					
REV. NO.	DATE	DESCRIPTION OF REVISION			BY	APP	MATERIAL					SH. SIZE		B	SCALE		X:X



ATAS INTERNATIONAL, INC
Allentown PA
610-395-8445
Mesa AZ
480-558-7210

SterraCore Window Sill Detail