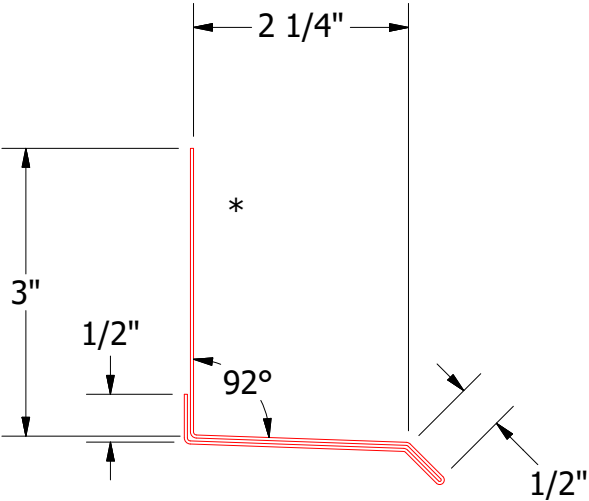
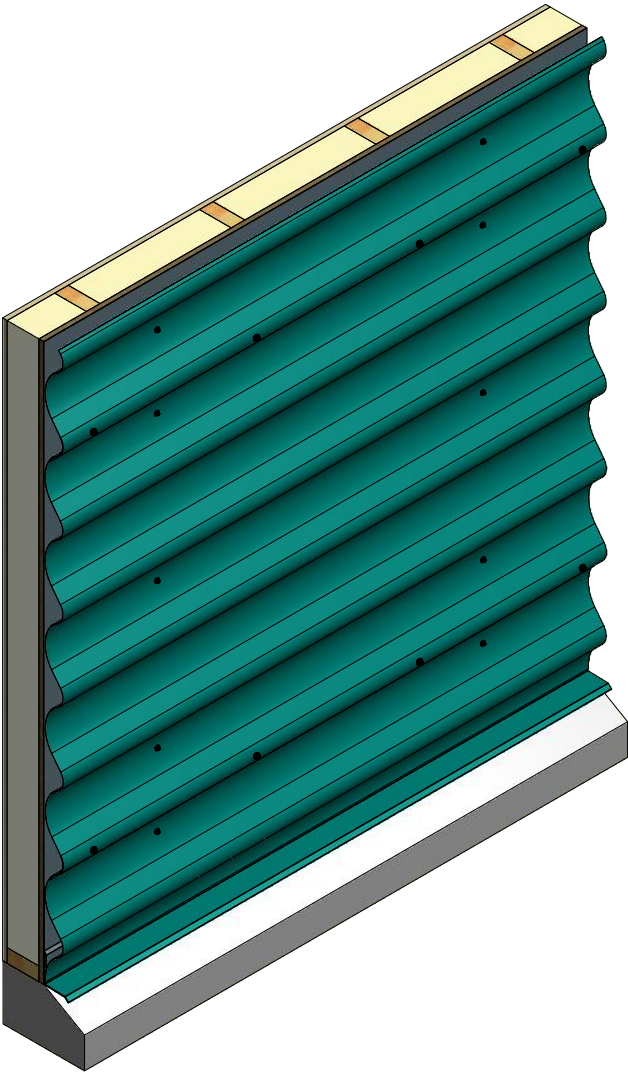
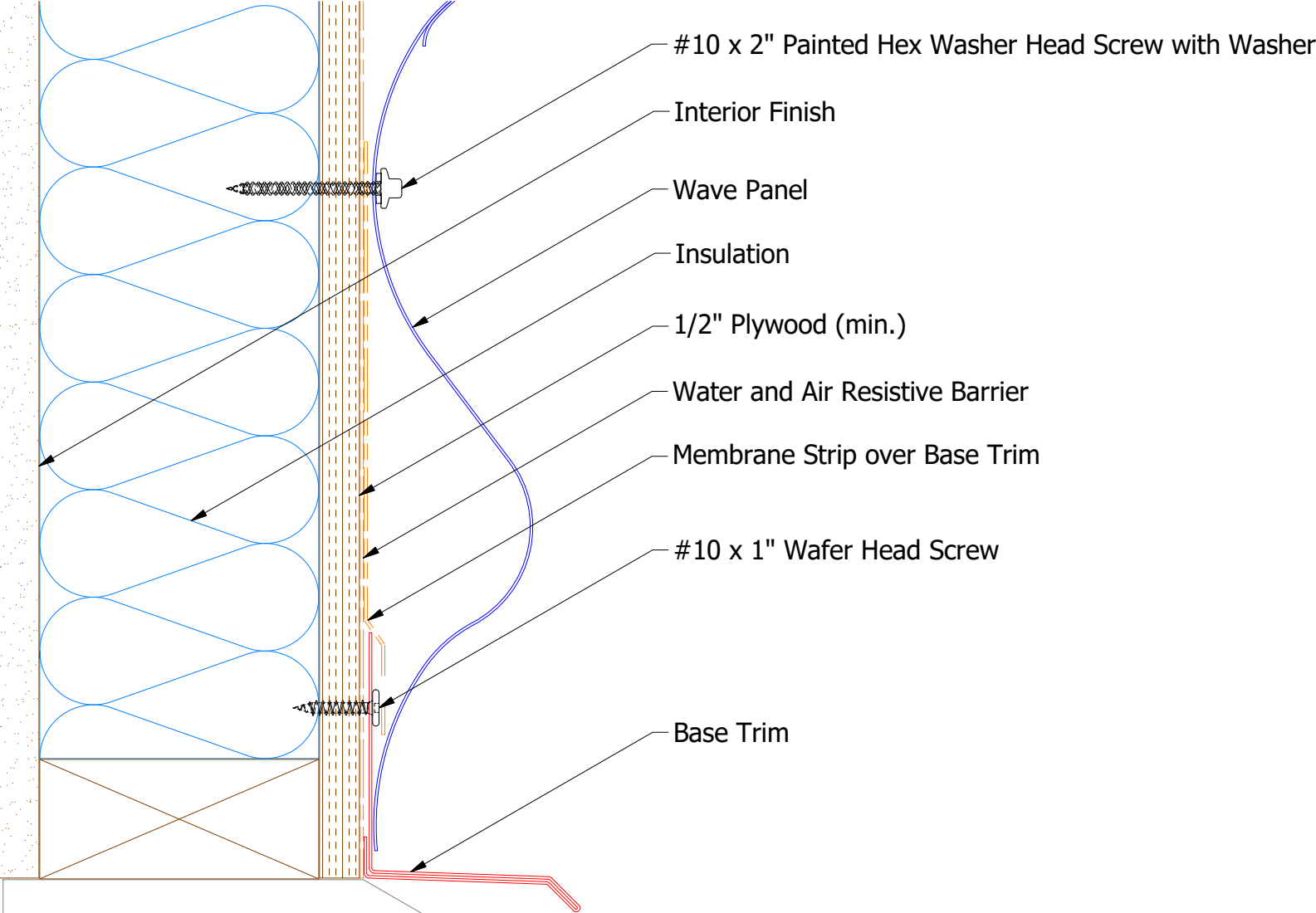



Horizontal Panel



BVA661- Base Trim

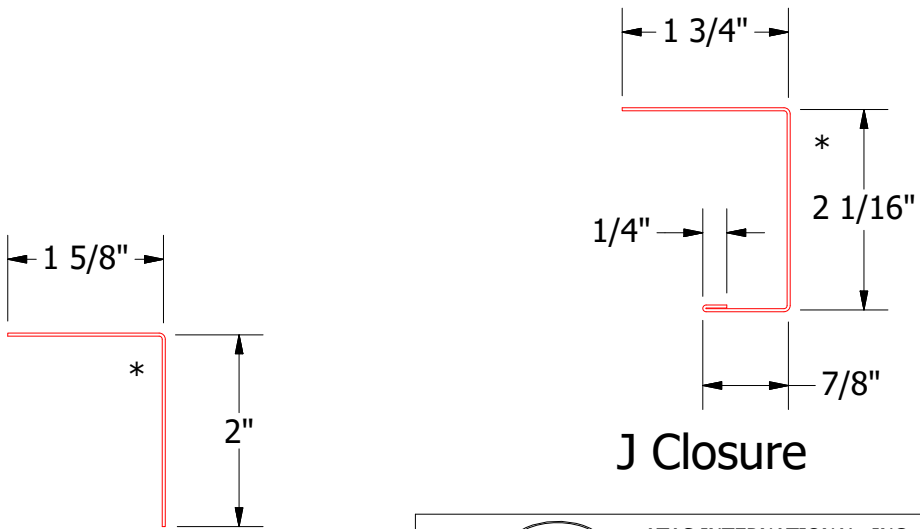
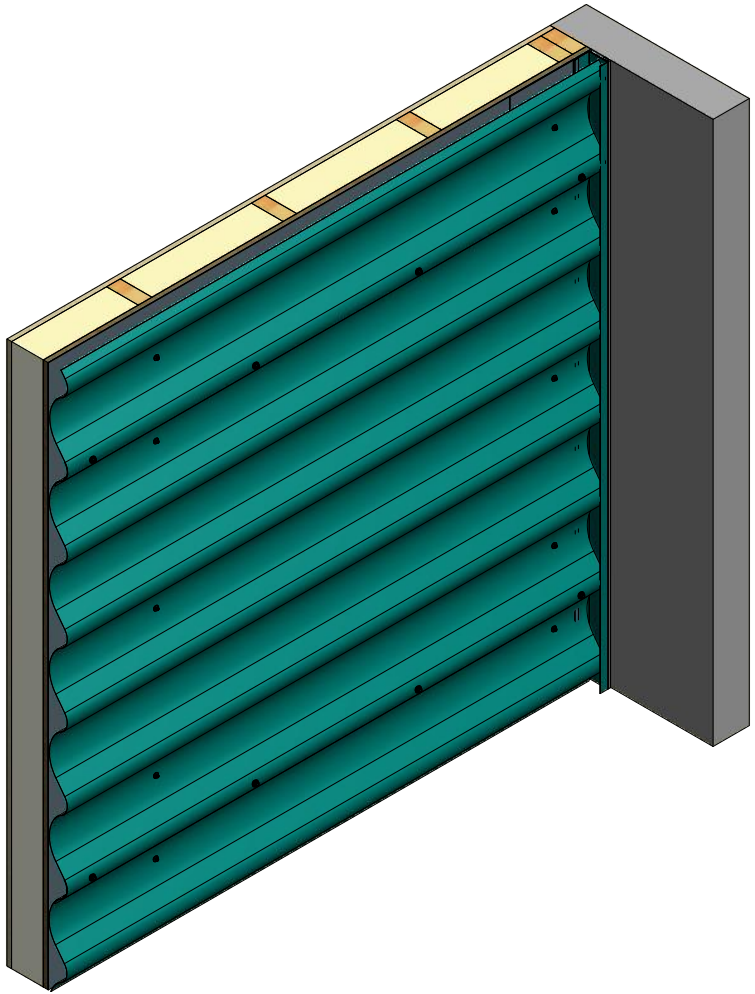
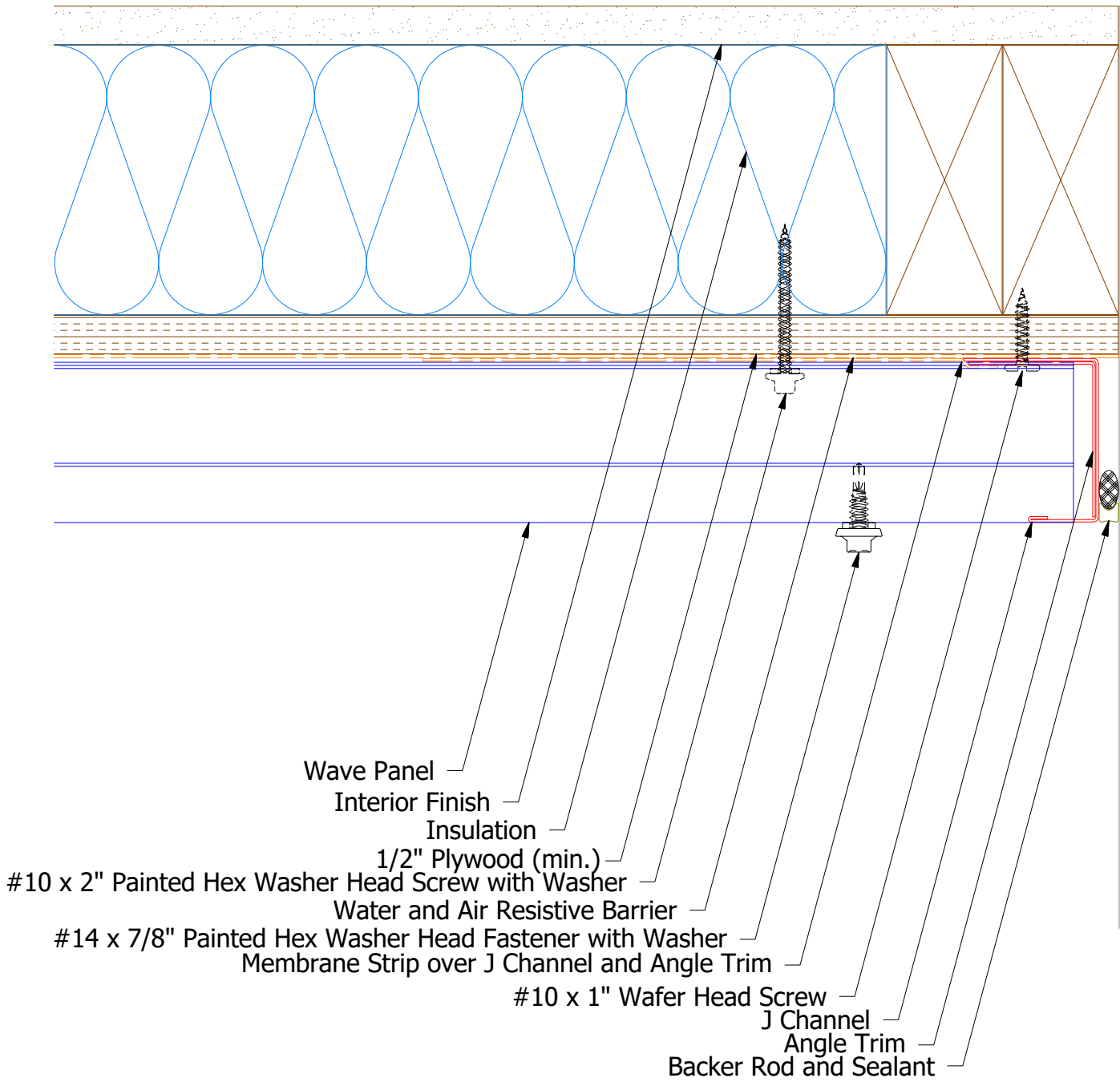


ATAS INTERNATIONAL, INC
Allentown PA
610-395-8445
Mesa AZ
480-558-7210

TITLE			
Wave Panel Base Detail			
DWG. NO.	DR	DMR	DATE
APP			8/30/2016
MATERIAL		SH. SIZE	SCALE
		B	X:X

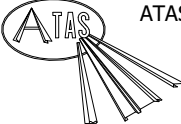
REV. NO.	DATE	DESCRIPTION OF REVISION	BY	APP

Horizontal Panel



Angle Trim

J Closure

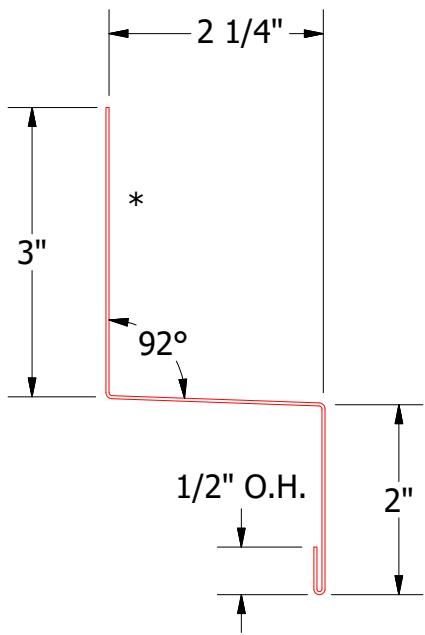
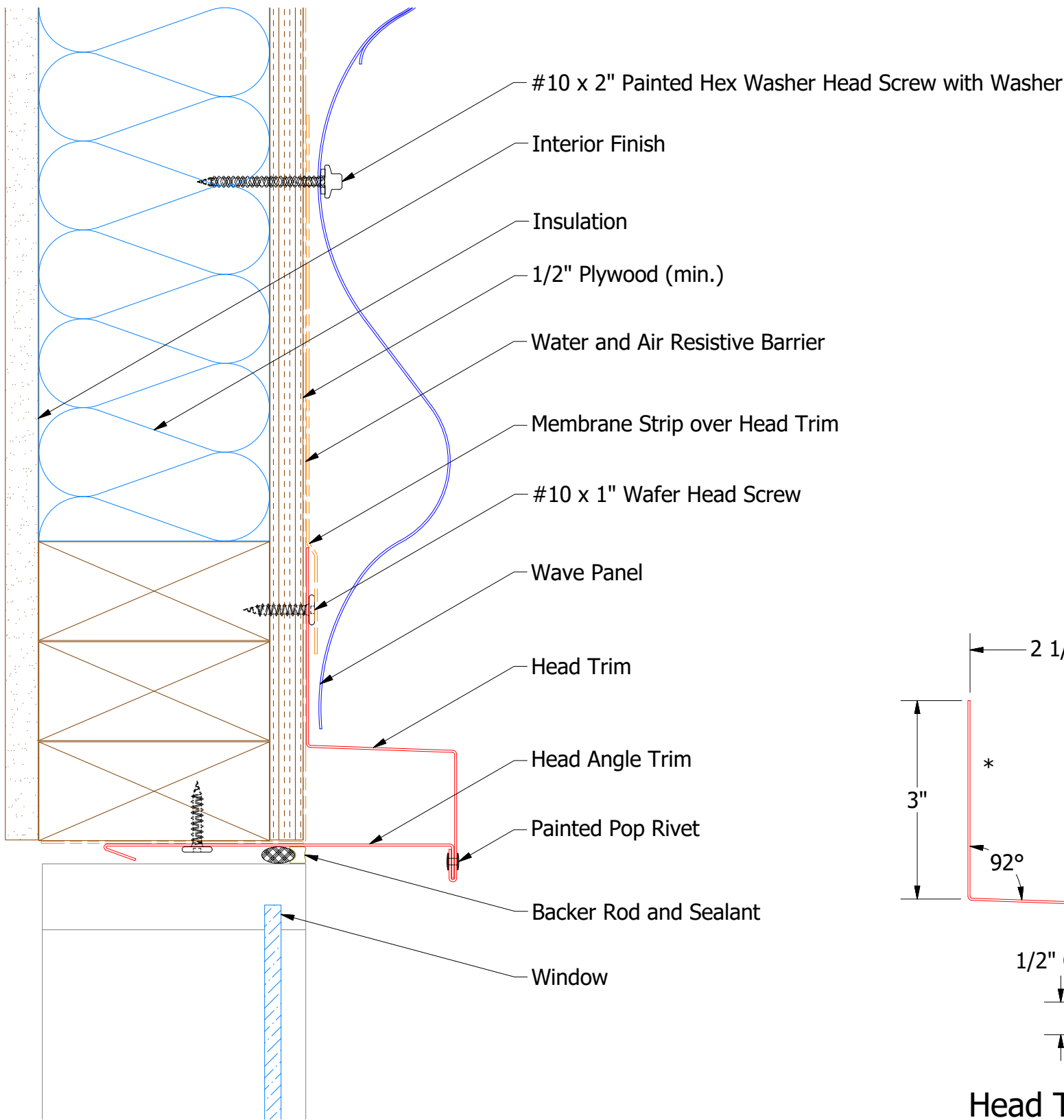


ATAS INTERNATIONAL, INC
Allentown PA
610-395-8445
Mesa AZ
480-558-7210

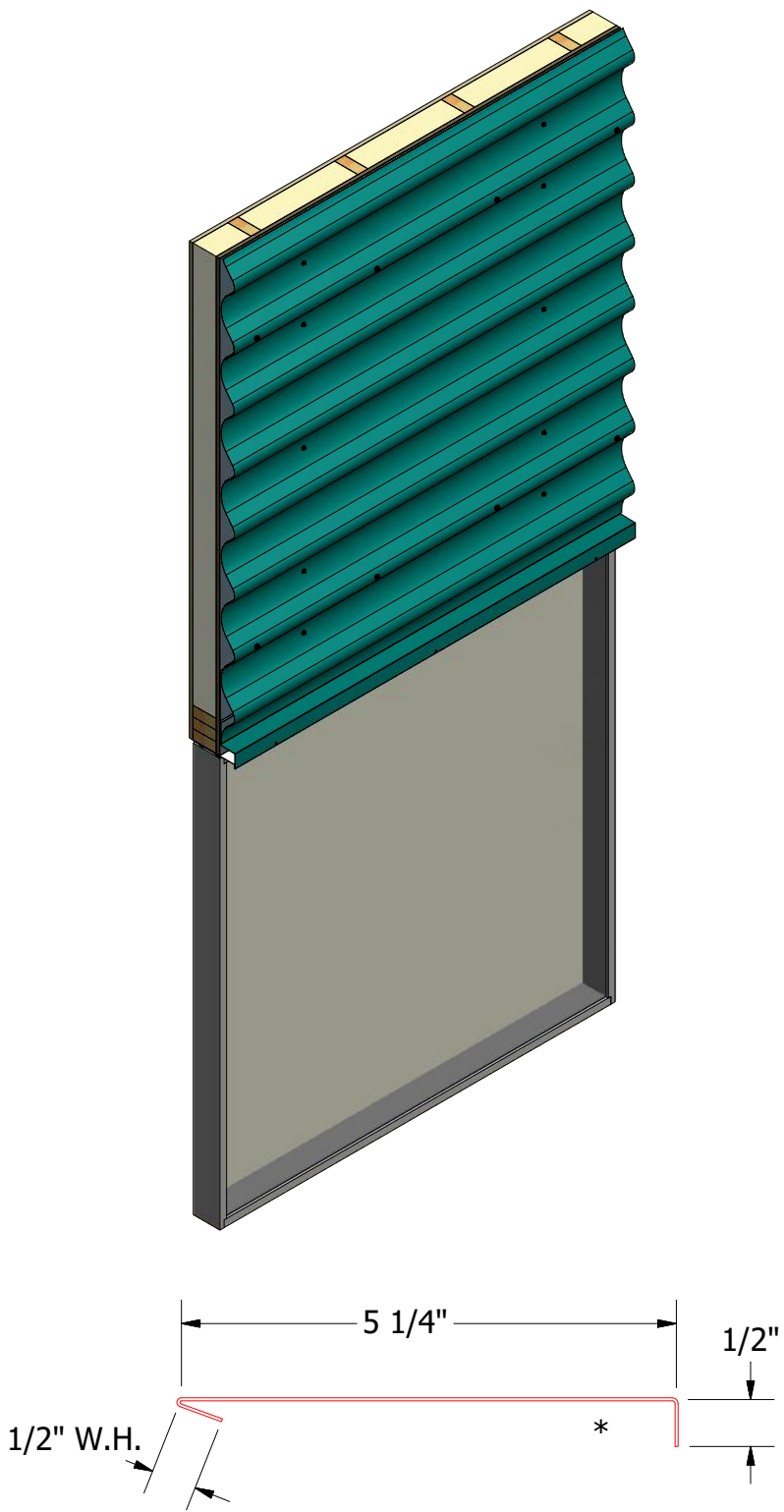
TITLE			
Wave Panel Endwall Detail			
DWG. NO.		DR	DATE
		DMR	8/30/2016
APP		DATE	
MATERIAL		SH. SIZE	SCALE
		B	X:X

REV. NO.	DATE	DESCRIPTION OF REVISION	BY	APP	


Horizontal Panel



Head Trim



Head Angle Trim

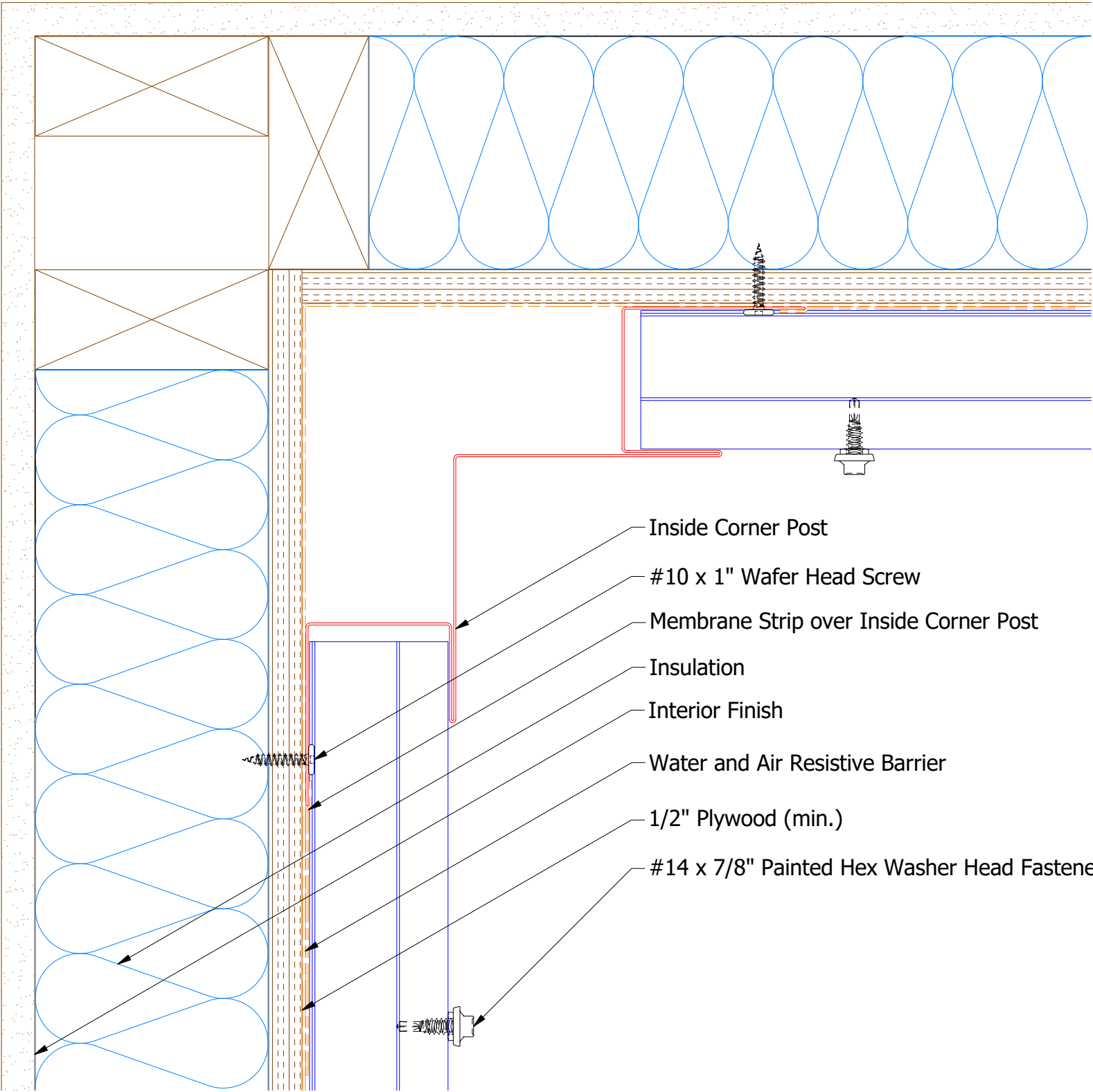


ATAS INTERNATIONAL, INC
Allentown PA
610-395-8445
Mesa AZ
480-558-7210

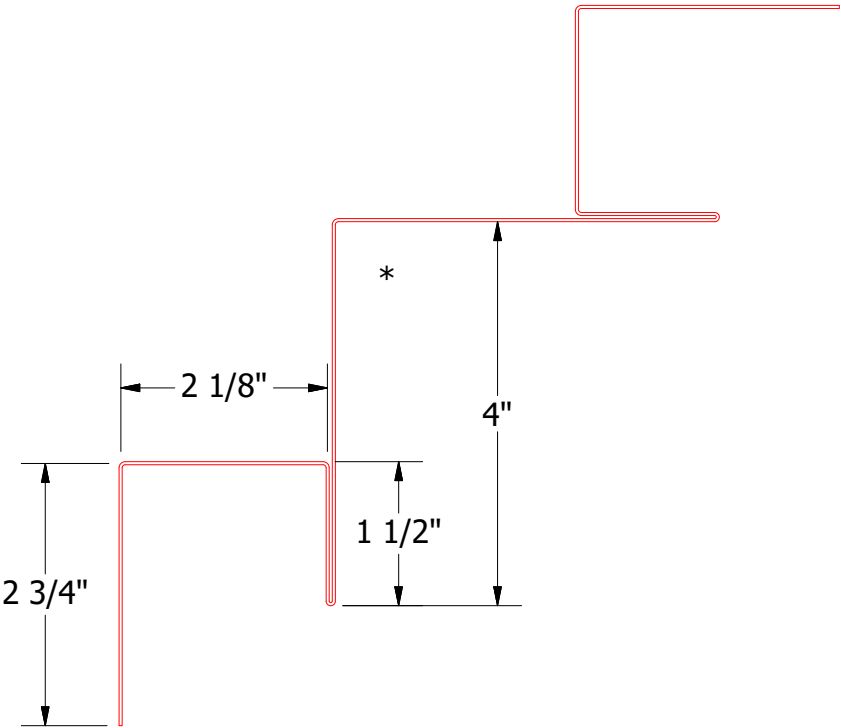
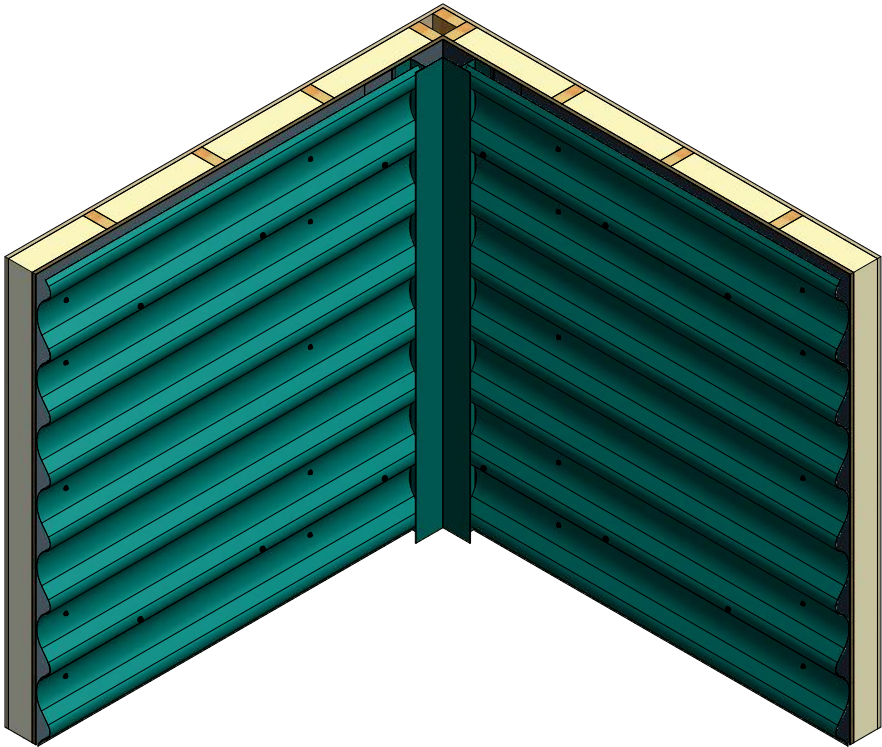
TITLE				Wave Panel Head Detail	
DWG. NO.		DR		DATE	
		DMR		8/30/2016	
MATERIAL		APP		DATE	
		SH. SIZE		SCALE	
		B		X:X	

REV. NO.	DATE	DESCRIPTION OF REVISION	BY	APP

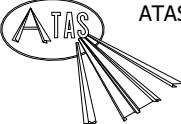
Horizontal Panel



- Inside Corner Post
- #10 x 1" Wafer Head Screw
- Membrane Strip over Inside Corner Post
- Insulation
- Interior Finish
- Water and Air Resistive Barrier
- 1/2" Plywood (min.)
- #14 x 7/8" Painted Hex Washer Head Fastener with Washer



Inside Corner Post

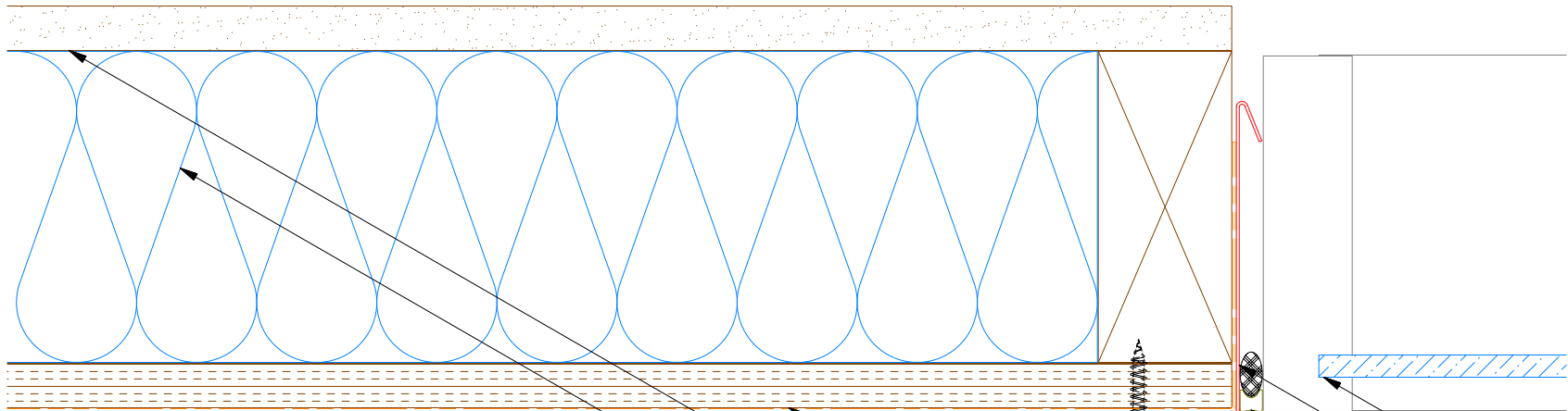


ATAS INTERNATIONAL, INC
Allentown PA
610-395-8445
Mesa AZ
480-558-7210

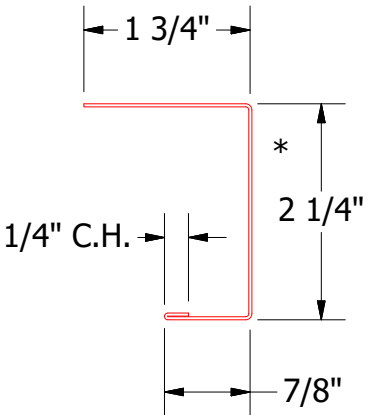
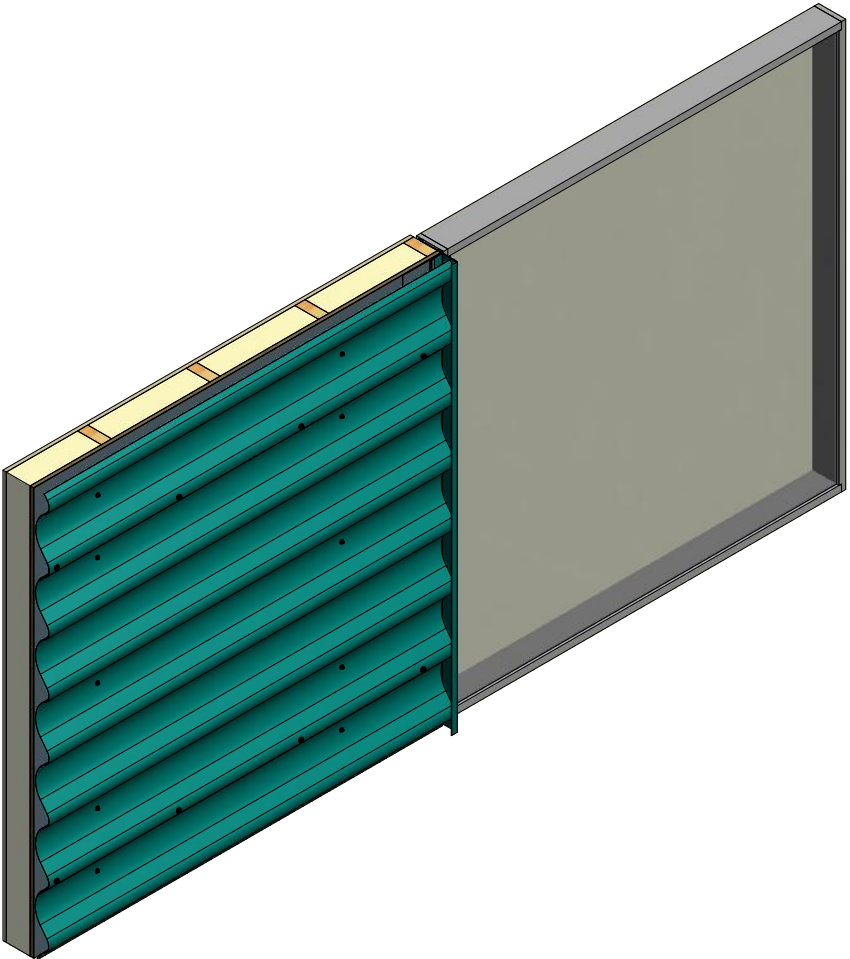
TITLE Wave Panel Inside Corner Detail			
DWG. NO.		DR DMR	DATE 8/31/2016
MATERIAL		APP	DATE
REV. NO.	DATE	DESCRIPTION OF REVISION	BY APP
SH. SIZE B		SCALE X:X	

REV. NO.	DATE	DESCRIPTION OF REVISION	BY	APP

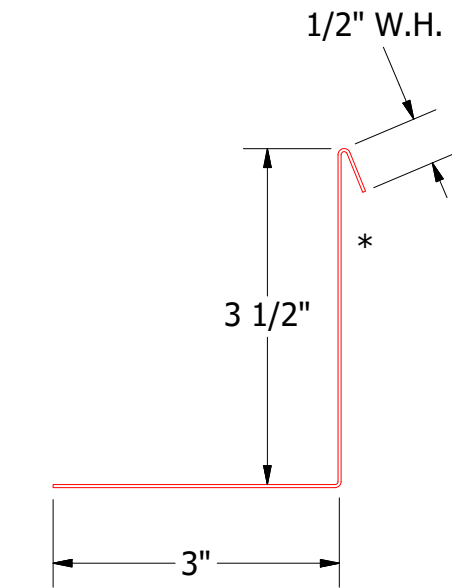
Horizontal Panel



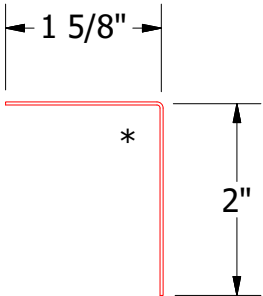
- Window
- Angle with Return
- Backer Rod and Sealant
- Angle Trim
- Butyl Tape
- #10 x 1" Wafer Head Screw
- Membrane Strip over J Channel and Angle Trim
- J Channel
- Water and Air Resistive Barrier
- 1/2" Plywood (min.)
- Interior Finish
- Insulation
- Wave Panel
- #14 x 7/8" Painted Hex Washer Head Fastener with Washer



J Channel



Angle with Return



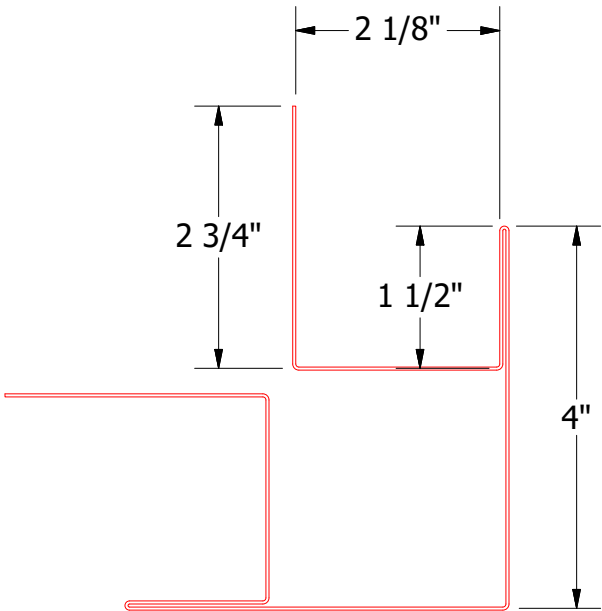
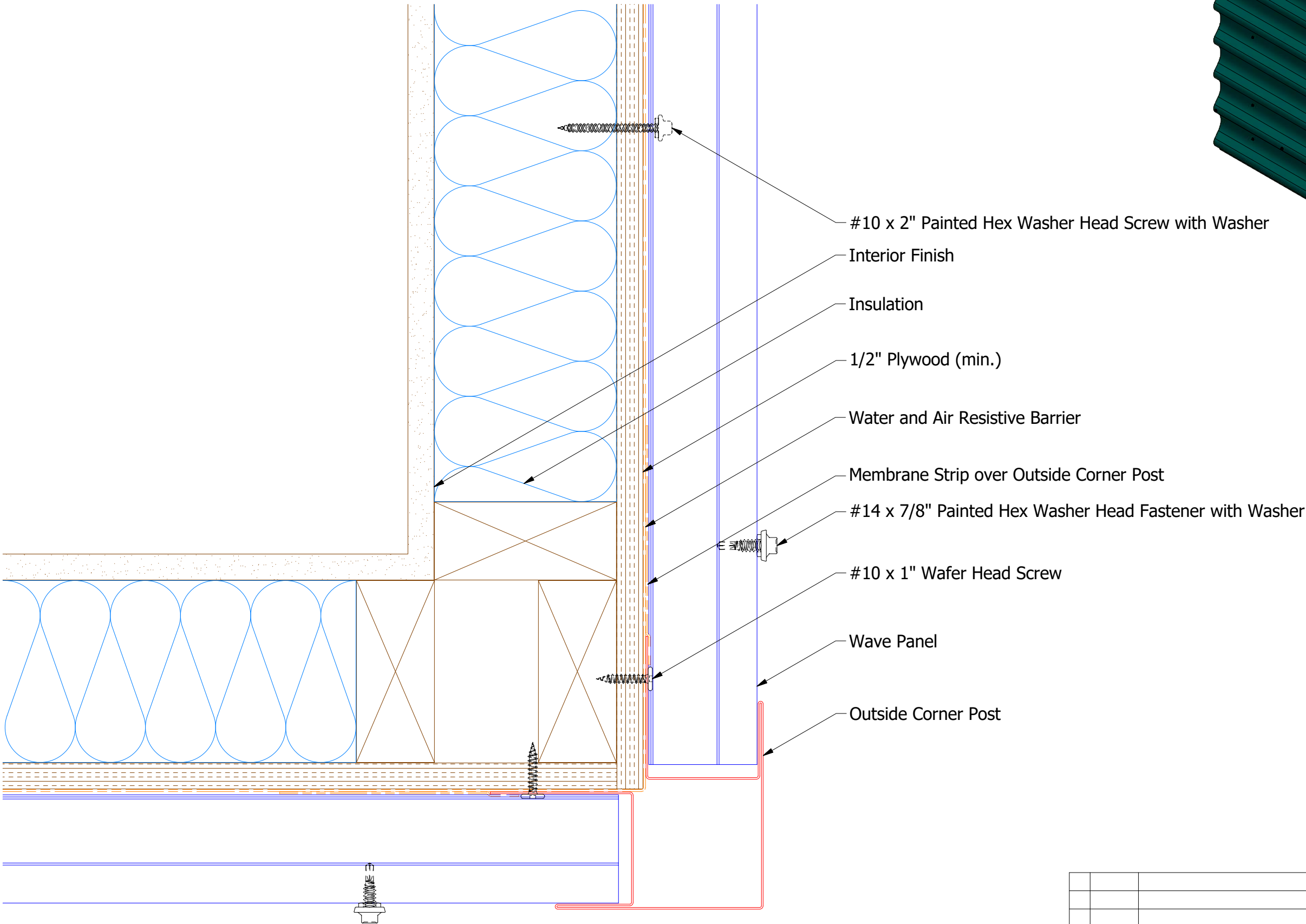
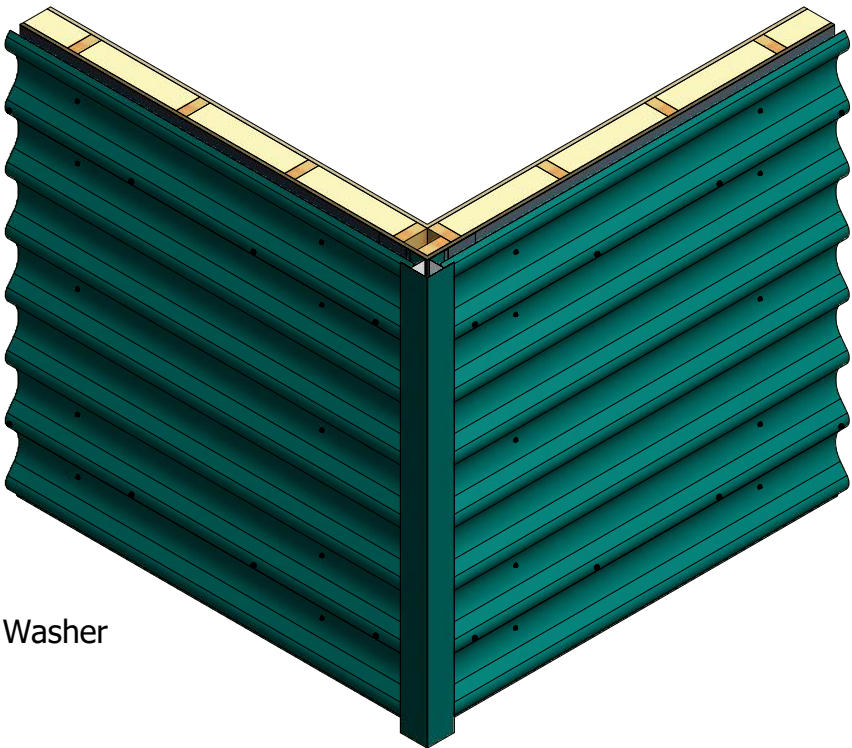
Angle Trim

REV. NO.				DATE				DESCRIPTION OF REVISION				BY				APP			
TITLE				DWG. NO.				DR				DATE				MATERIAL			
Wave Panel Jamb Detail								DMR				8/31/2016							
								APP											
								SH. SIZE				B				SCALE			
																X:X			

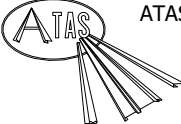


ATAS INTERNATIONAL, INC
Allentown PA
610-395-8445
Mesa AZ
480-558-7210

Horizontal Panel



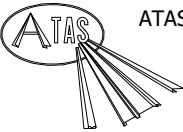
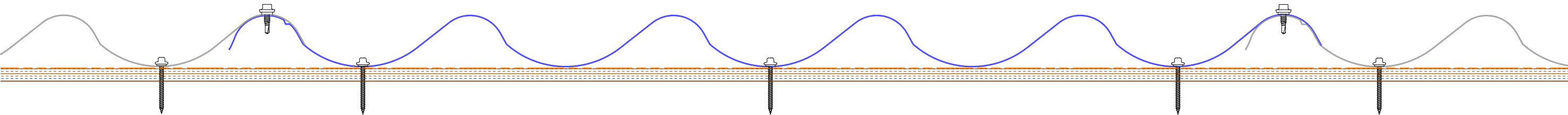
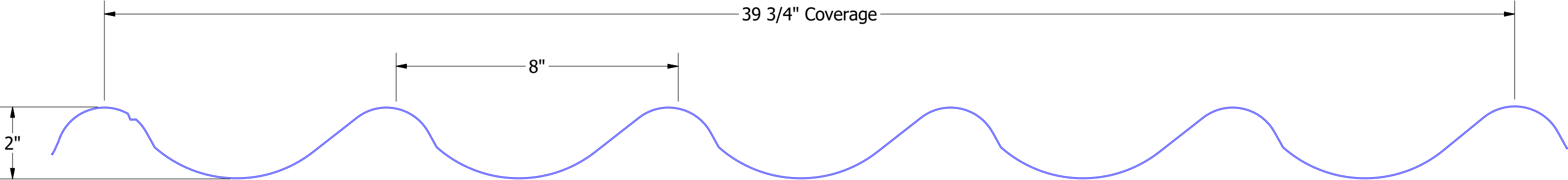
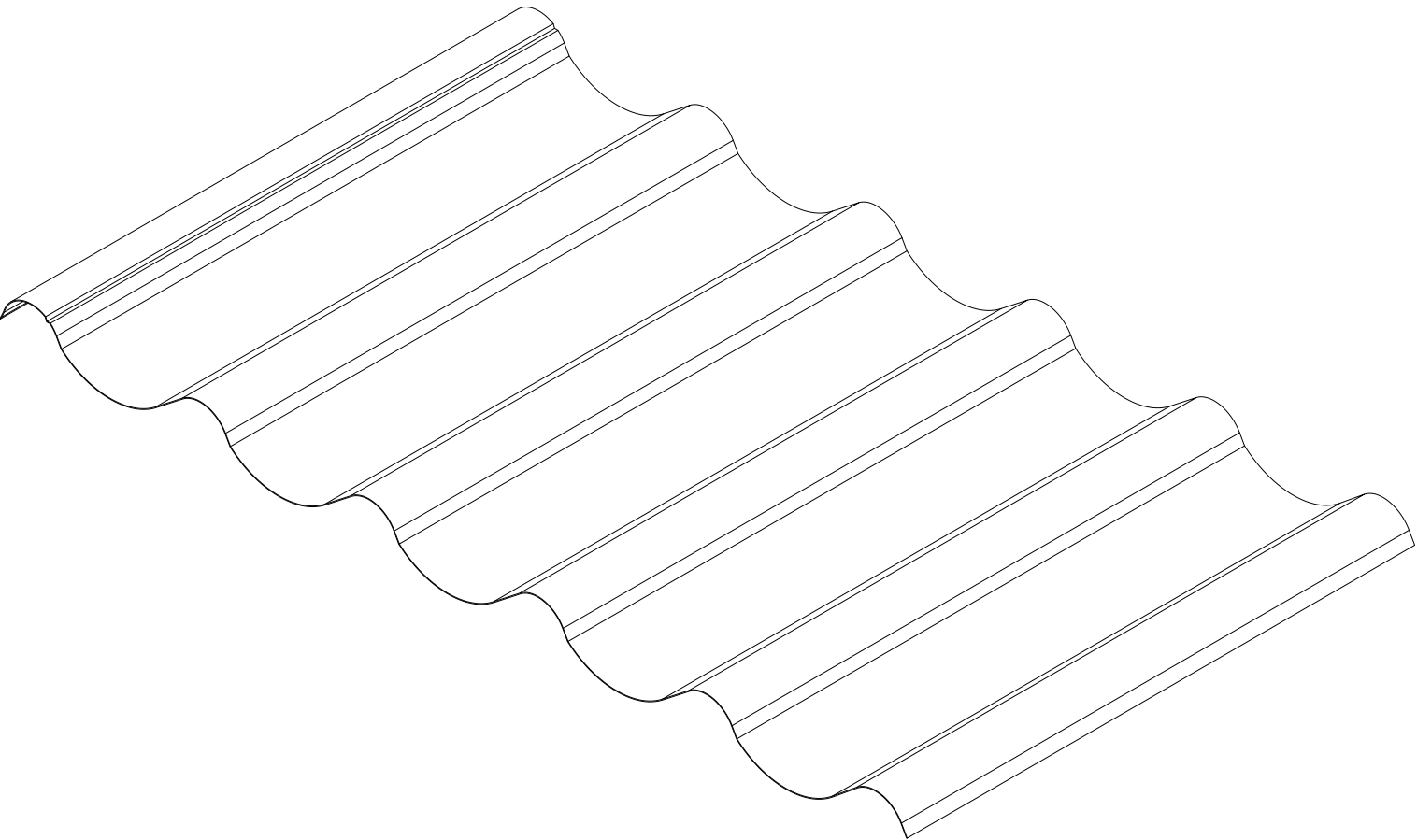
Outside Corner Post



ATAS INTERNATIONAL, INC
Allentown PA
610-395-8445
Mesa AZ
480-558-7210

TITLE Wave Panel Outside Corner Detail			
DWG. NO.		DR DMR	DATE 8/31/2016
MATERIAL		APP	DATE
REV. NO.	DATE	DESCRIPTION OF REVISION	BY APP
SH. SIZE B		SCALE X:X	

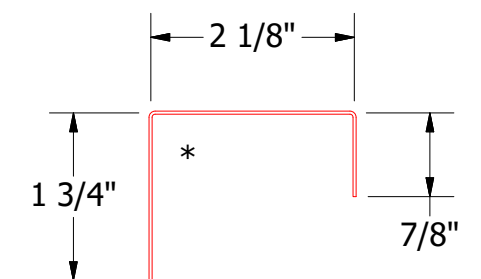
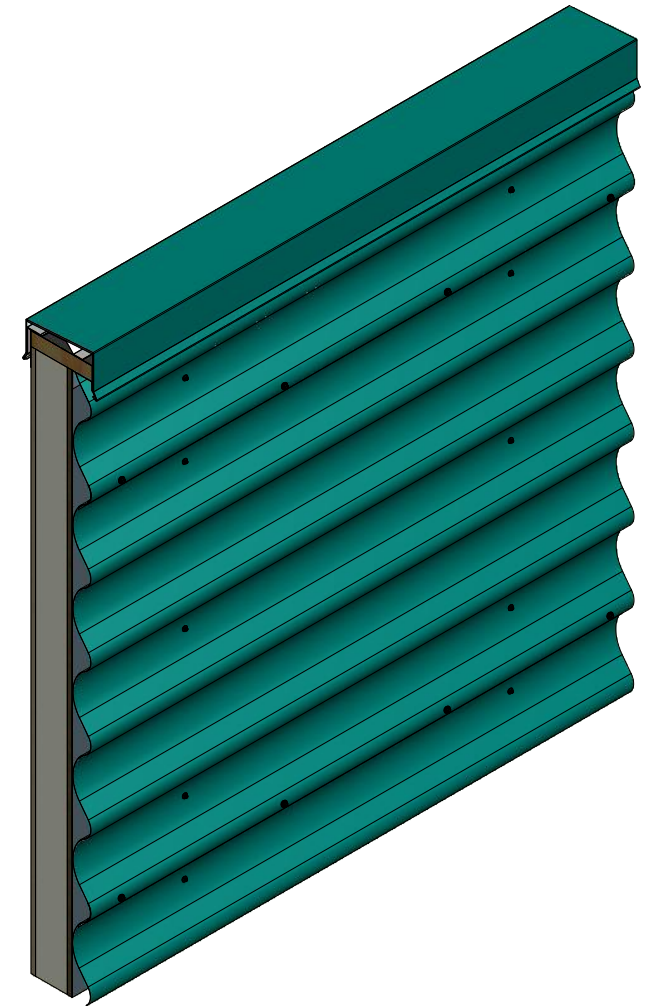
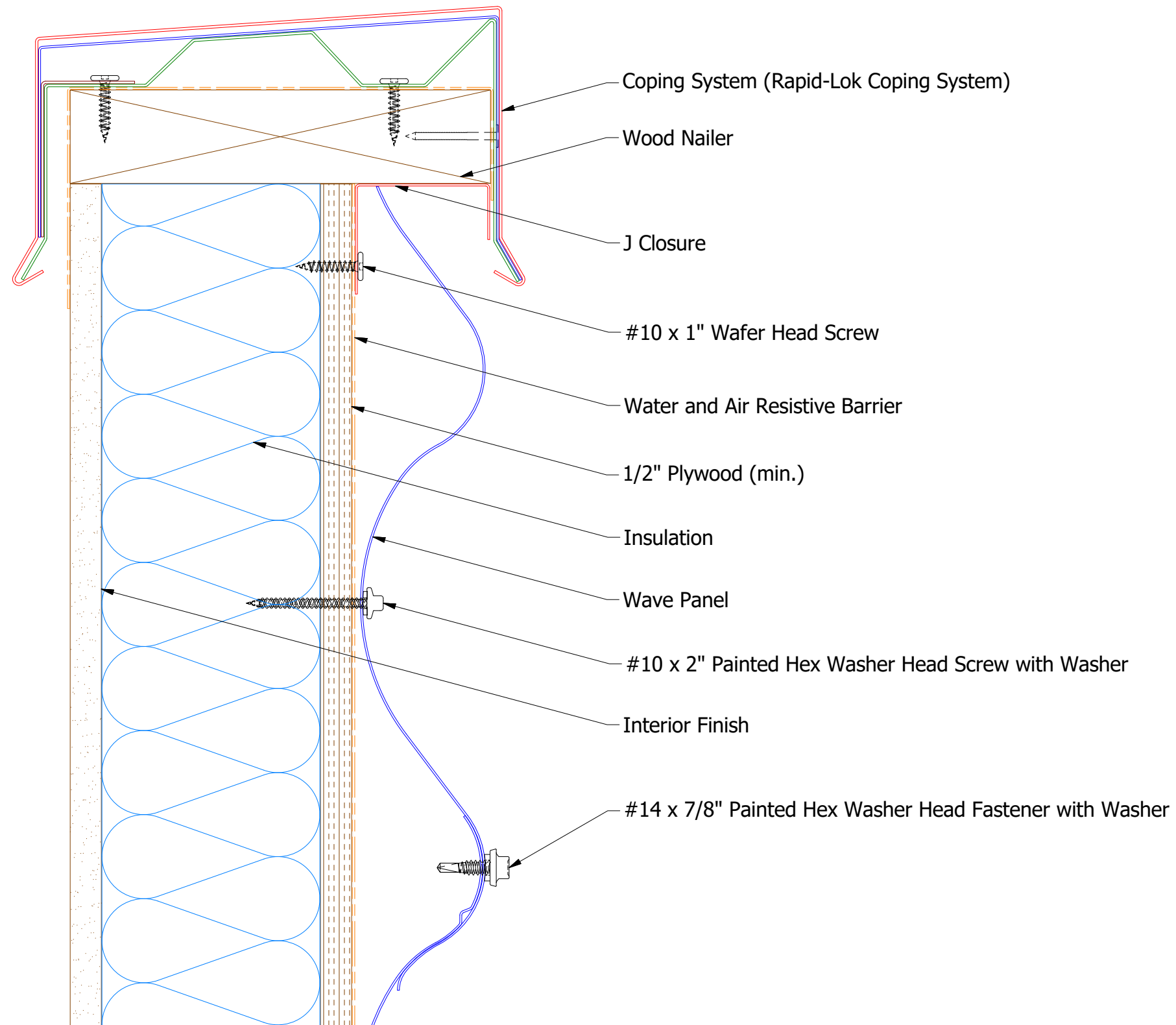
REV. NO.	DATE	DESCRIPTION OF REVISION	BY	APP



ATAS INTERNATIONAL, INC
Allentown PA
610-395-8445
Mesa AZ
480-558-7210

					Wave Panel Profile Detail		
					DWG. NO.	DR KRK	DATE 12/29/2017
					MATERIAL	APP	DATE
REV. NO.	DATE	DESCRIPTION OF REVISION	BY	APP		SH. SIZE B	SCALE X:X

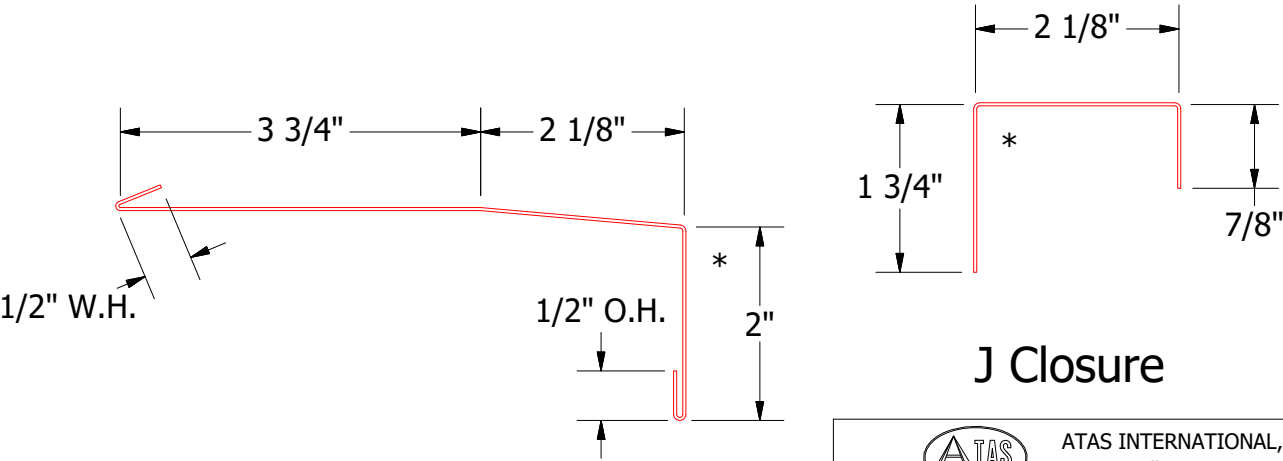
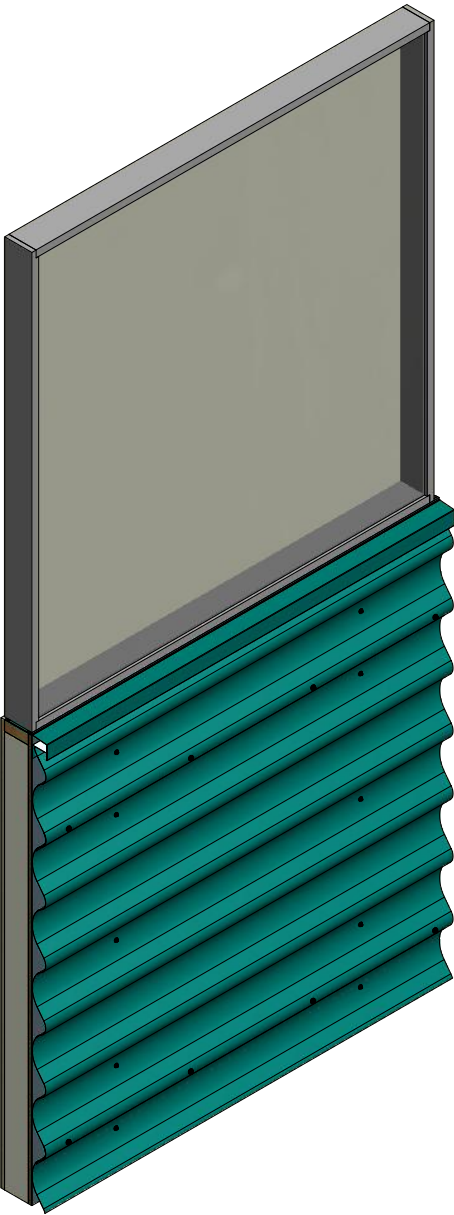
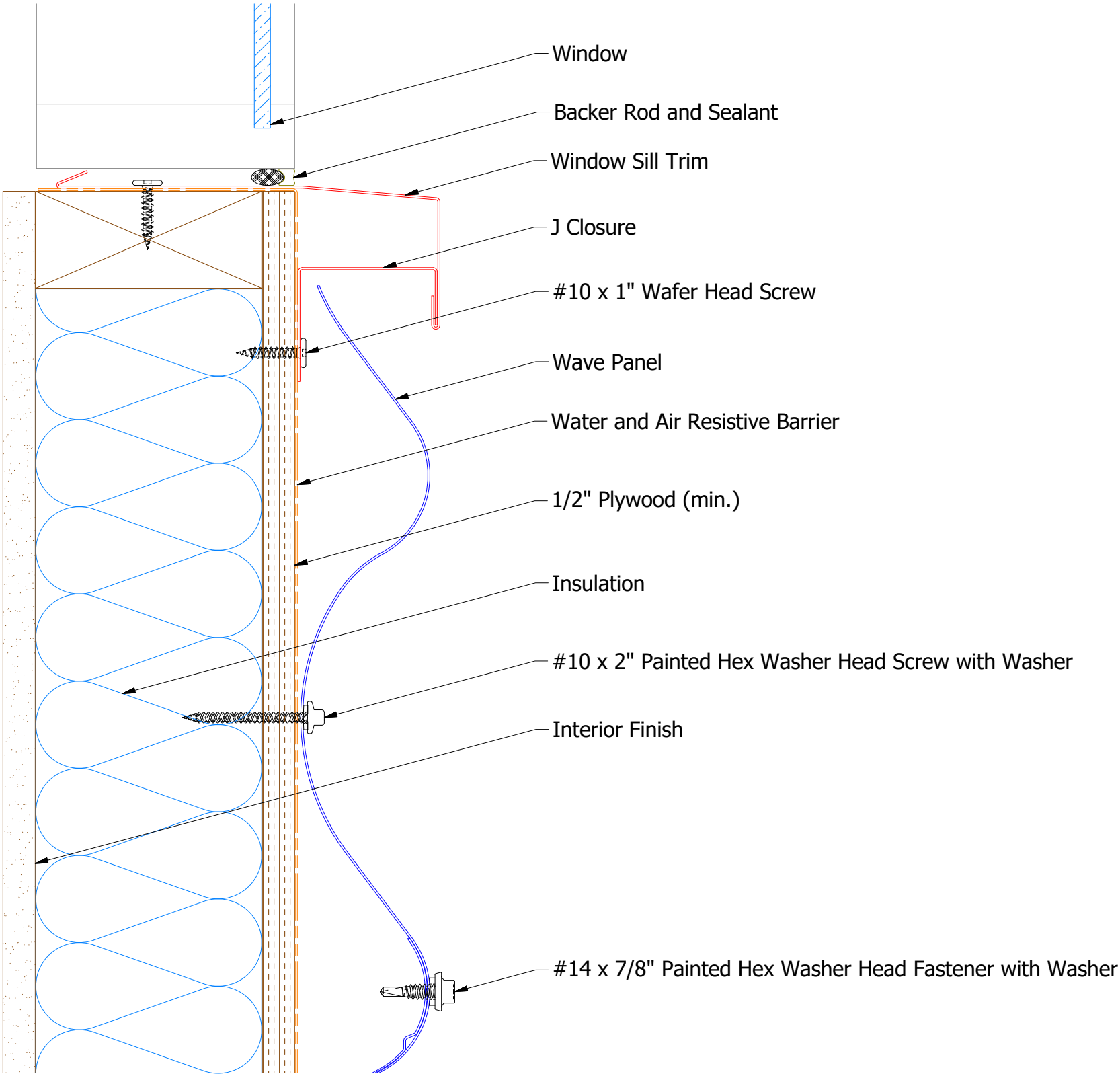
Horizontal Panel



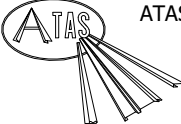
J Closure

					Wave Panel Top of Wall Detail						
					DWG. NO.			DR DMR		DATE 9/1/2016	
					MATERIAL			APP		DATE	
REV. NO.	DATE	DESCRIPTION OF REVISION			BY	APP	SH. SIZE B		SCALE X:X		

Horizontal Panel



Window Sill Trim



ATAS INTERNATIONAL, INC
Allentown PA
610-395-8445
Mesa AZ
480-558-7210

TITLE			
Wave Panel Window Sill Detail			
DWG. NO.		DR	DATE
		DMR	9/1/2016
MATERIAL		APP	DATE
		SH. SIZE	B
		SCALE	X:X

REV. NO.	DATE	DESCRIPTION OF REVISION	BY	APP