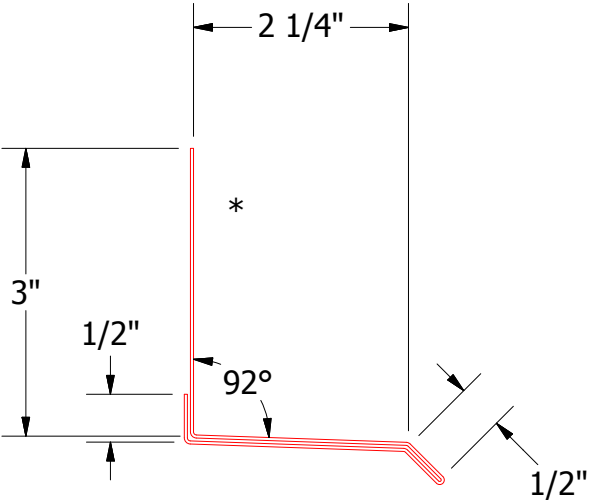
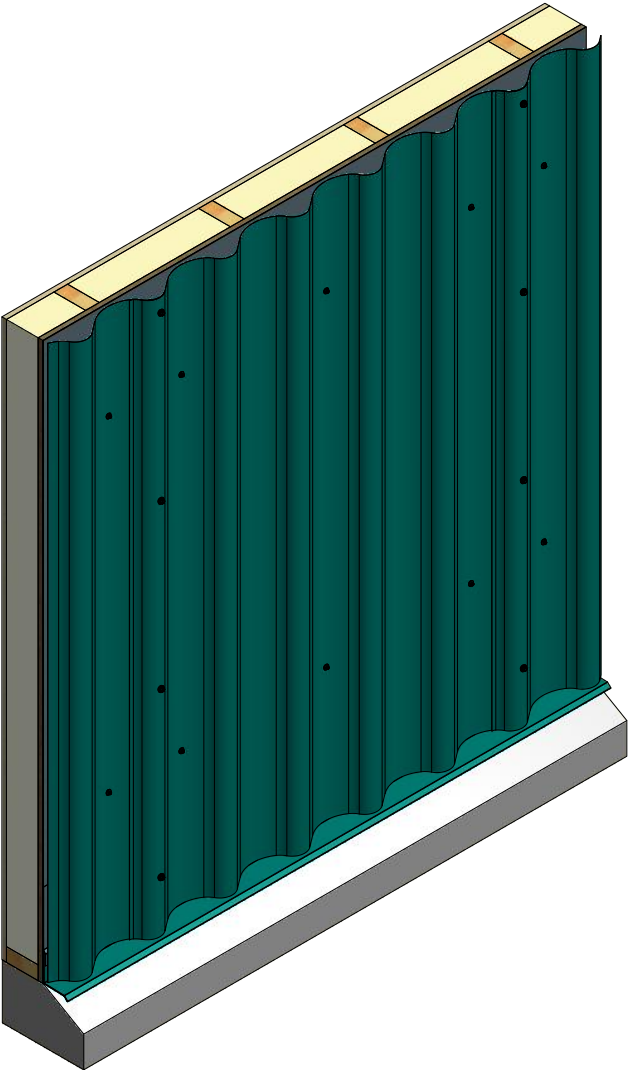
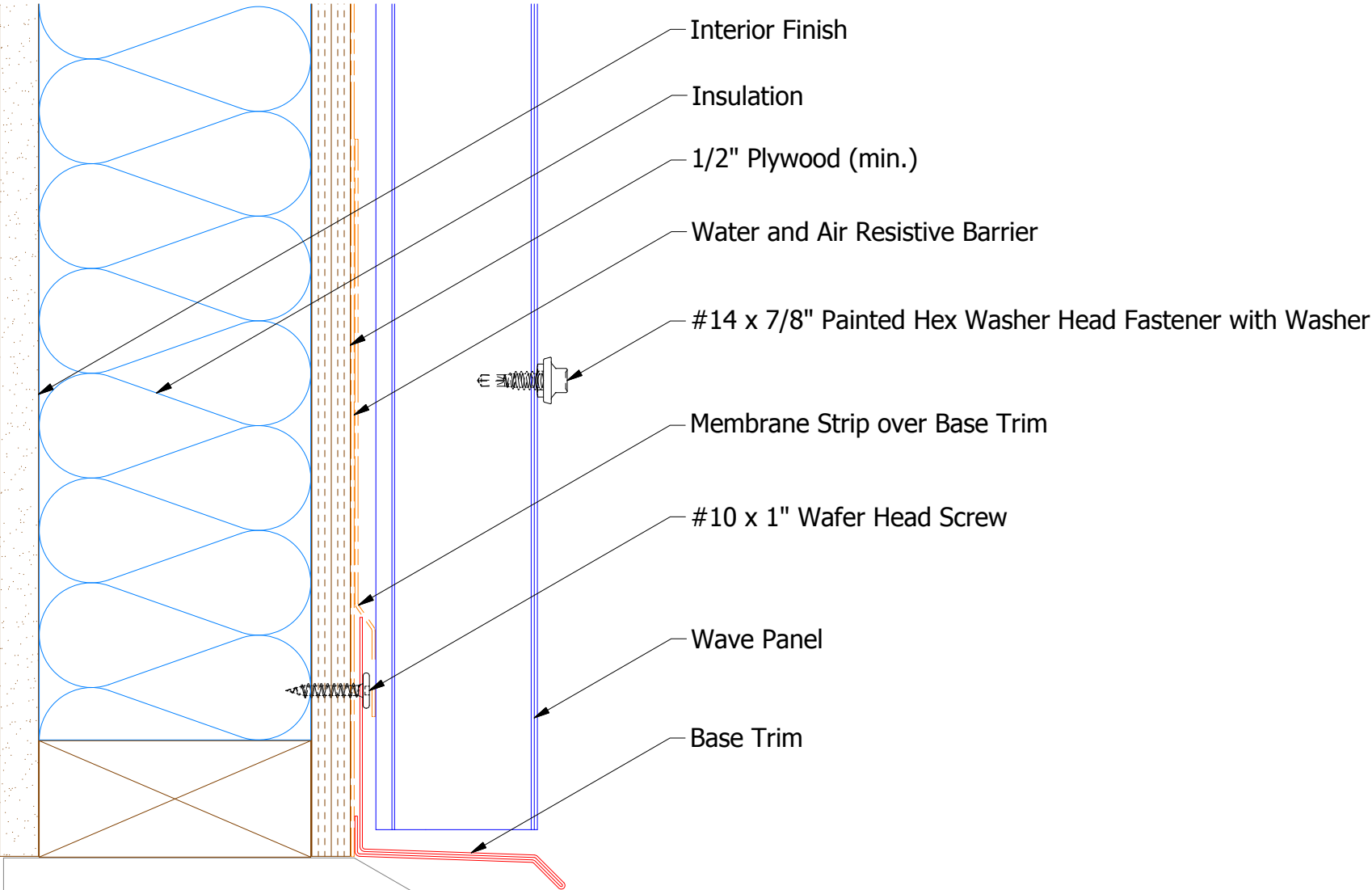



Vertical Panel



BVA661- Base Trim

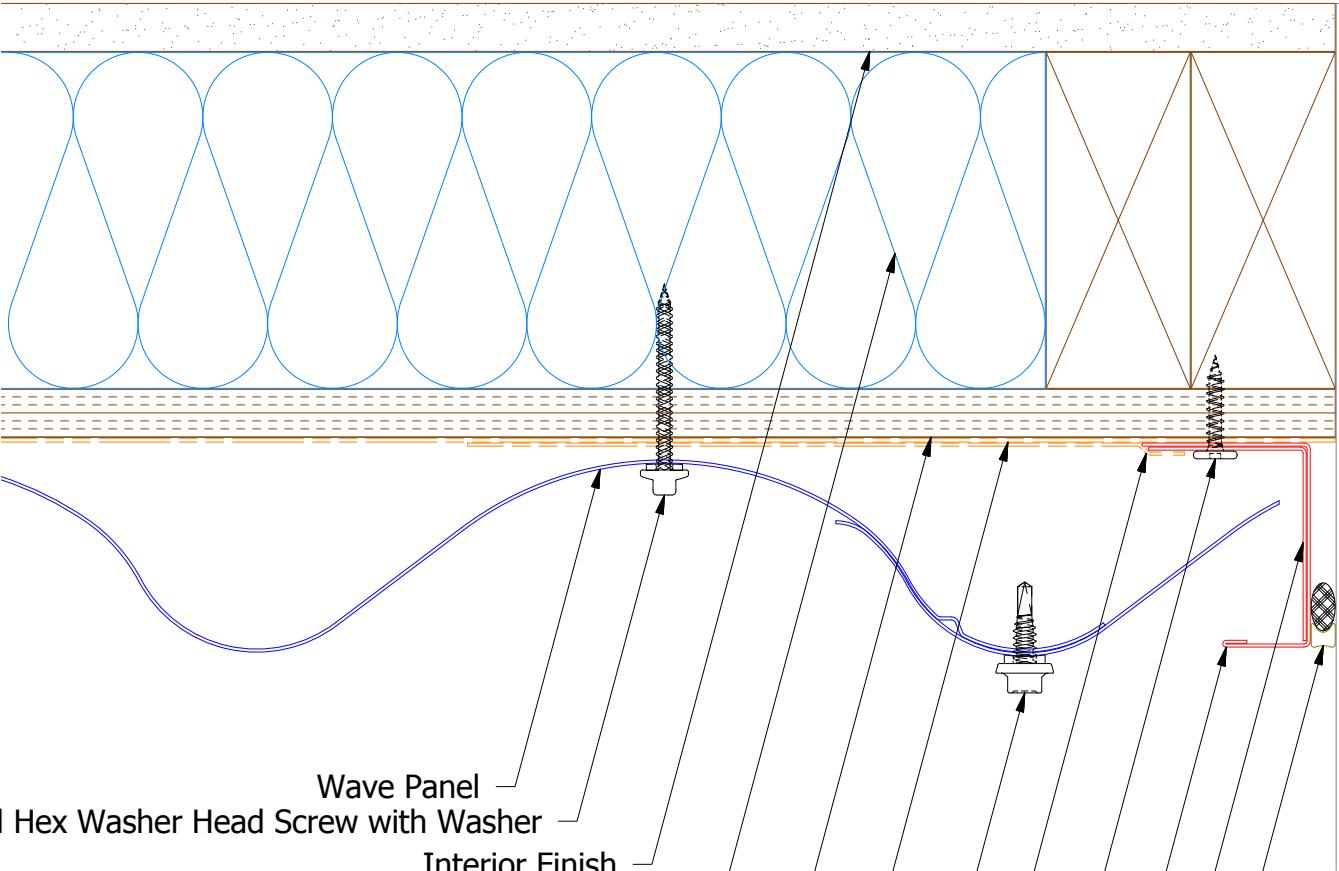


ATAS INTERNATIONAL, INC
Allentown PA
610-395-8445
Mesa AZ
480-558-7210

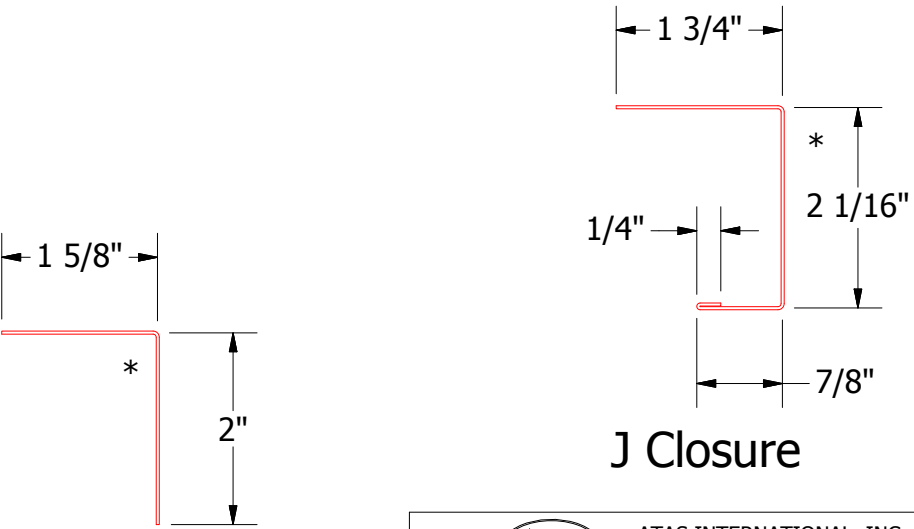
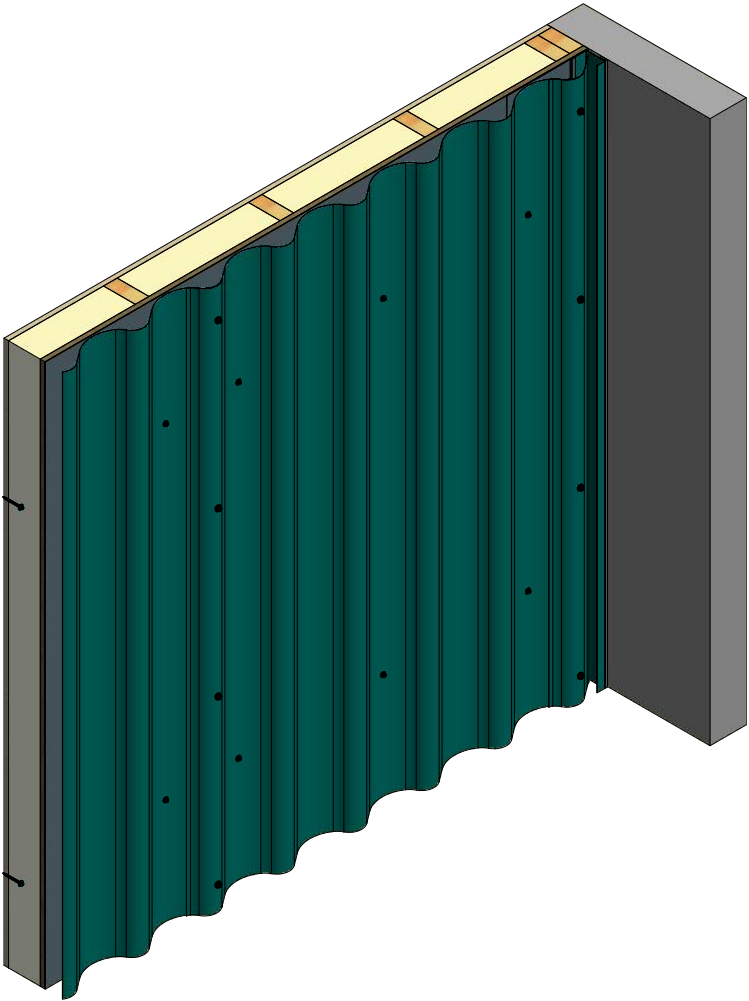
TITLE			
Wave Panel Base Detail			
DWG. NO.		DR	DATE
		DMR	8/30/2016
APP		DATE	
MATERIAL		SH. SIZE	SCALE
		B	X:X

REV. NO.	DATE	DESCRIPTION OF REVISION	BY	APP

Vertical Panel



- Wave Panel
- #10 x 2" Painted Hex Washer Head Screw with Washer
- Interior Finish
- Insulation
- 1/2" Plywood (min.)
- Water and Air Resistive Barrier
- #14 x 7/8" Painted Hex Washer Head Fastener with Washer
- Membrane Strip over J Channel and Angle Trim
- #10 x 1" Wafer Head Screw
- J Channel
- Angle Trim
- Backer Rod and Sealant



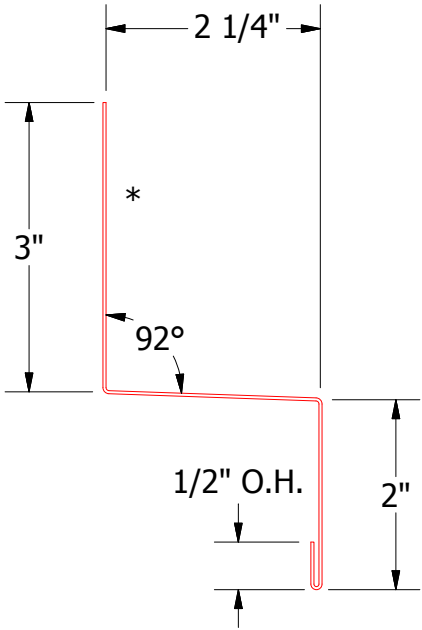
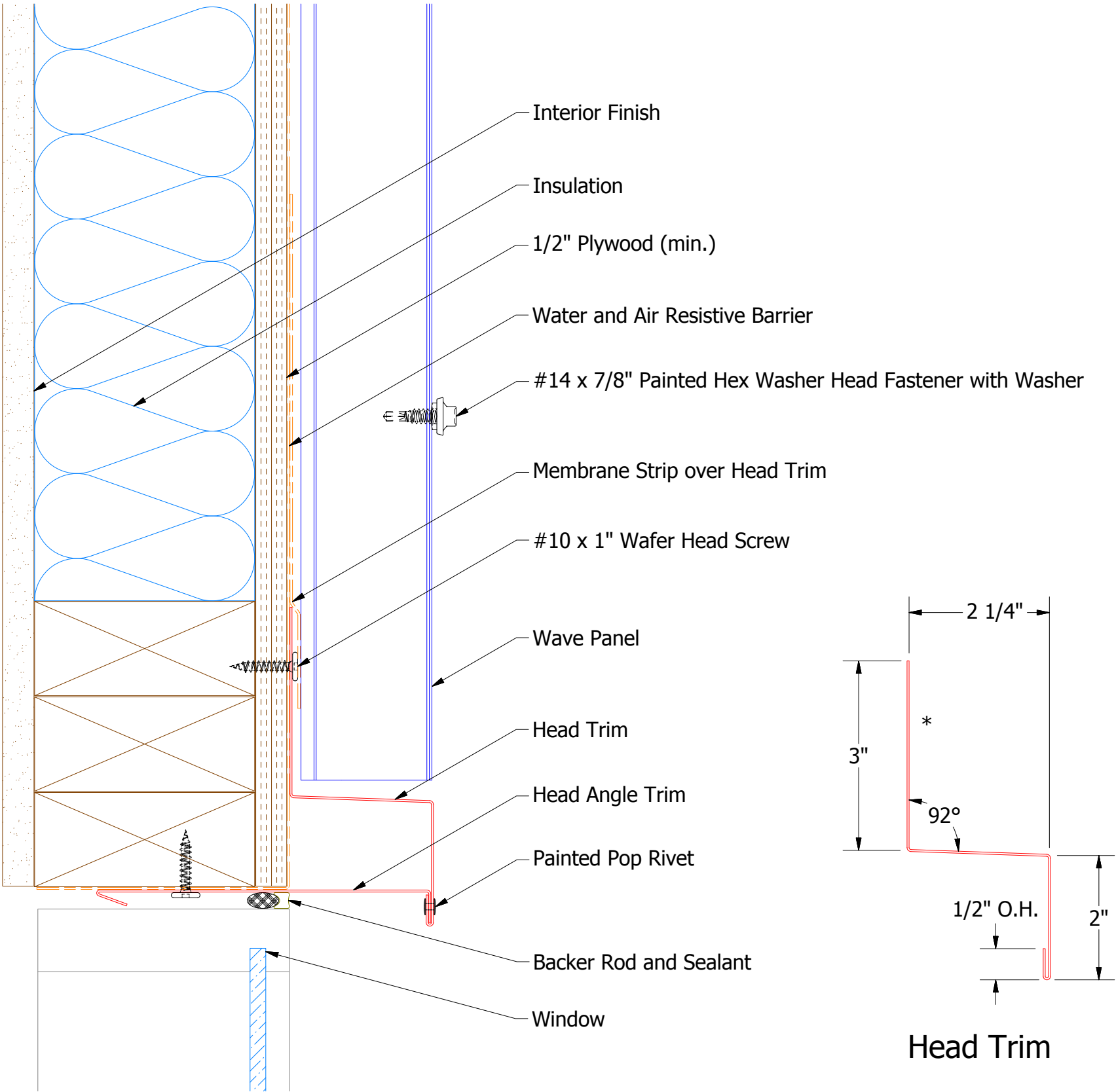
Angle Trim

J Closure

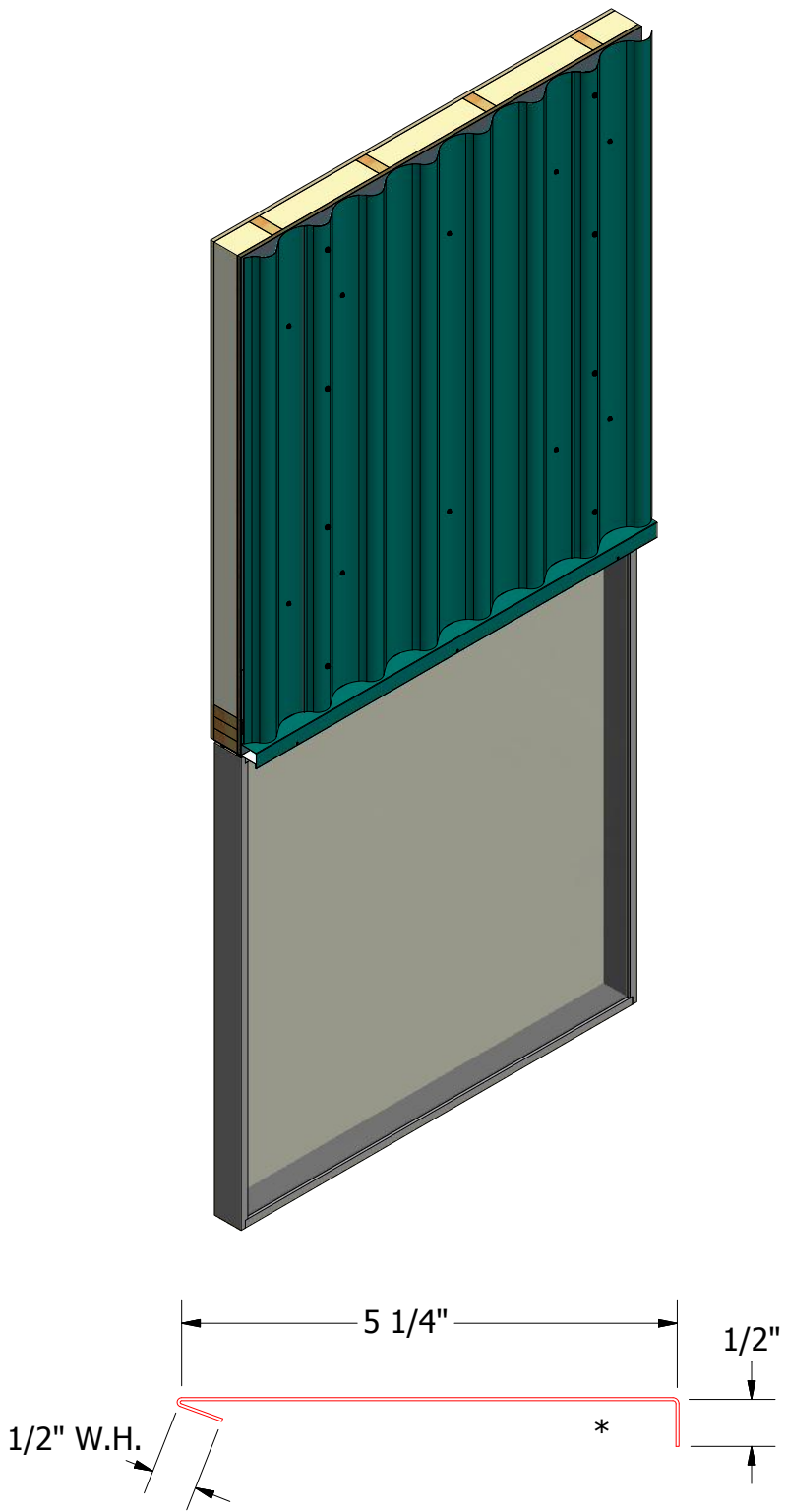
ATAS INTERNATIONAL, INC
Allentown PA
610-395-8445
Mesa AZ
480-558-7210

TITLE				Wave Panel Endwall Detail			
DWG. NO.		DR		DATE		8/30/2016	
		APP		DATE			
MATERIAL		SH. SIZE		SCALE		X:X	
REV. NO.		DATE		DESCRIPTION OF REVISION		BY APP	

Vertical Panel



Head Trim



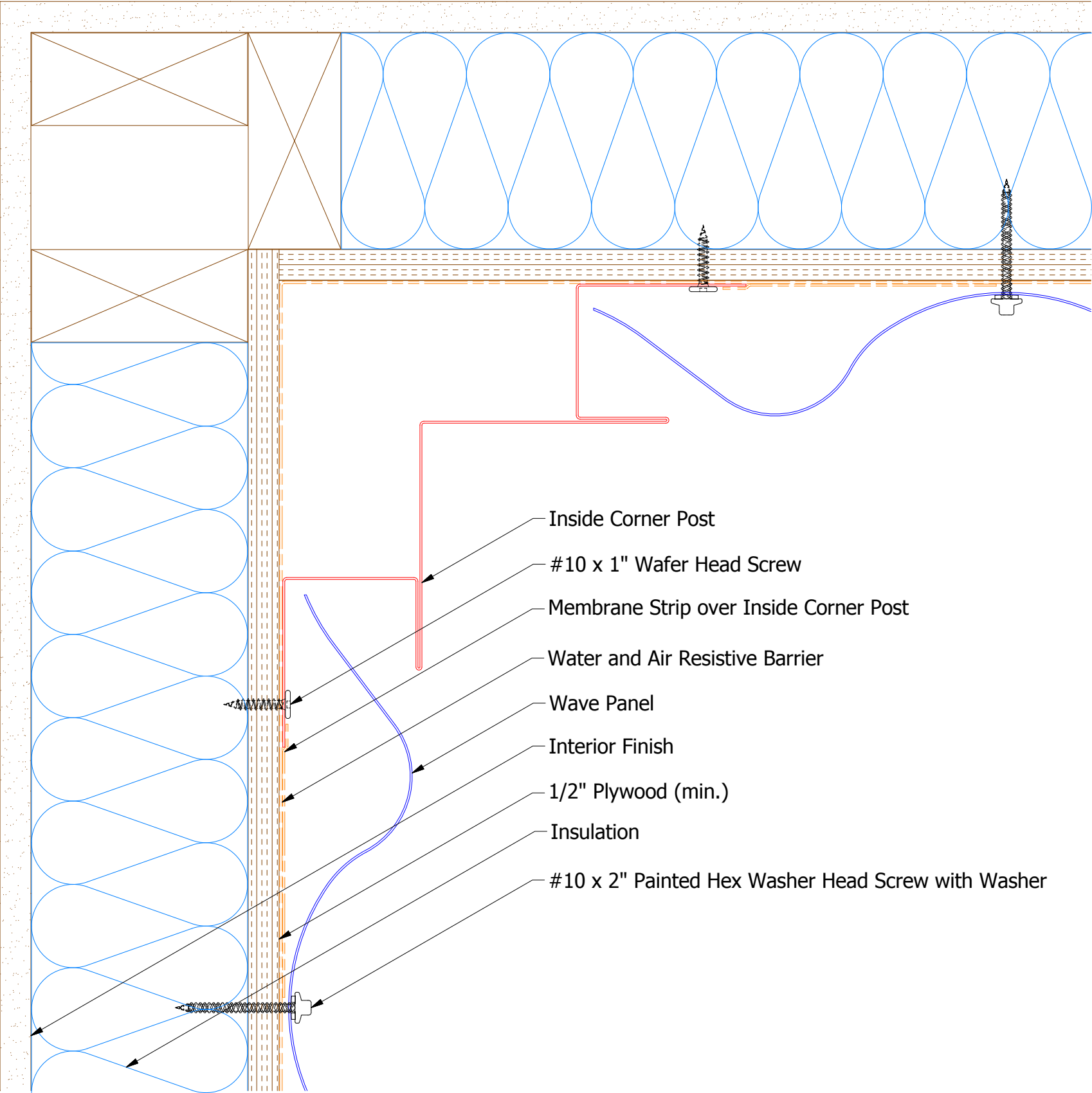
Head Angle Trim

				TITLE		Wave Panel Head Detail	
				DWG. NO.	DR	DATE	8/30/2016
				APP	DMR	DATE	
				MATERIAL	SH. SIZE	SCALE	X:X
REV. NO.	DATE	DESCRIPTION OF REVISION	BY	APP	B		

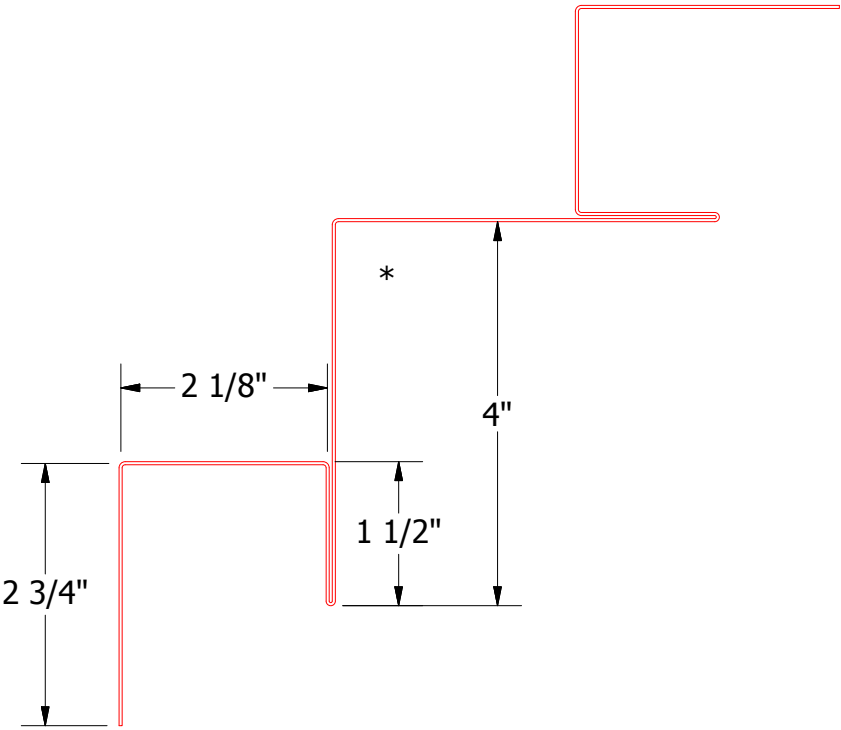
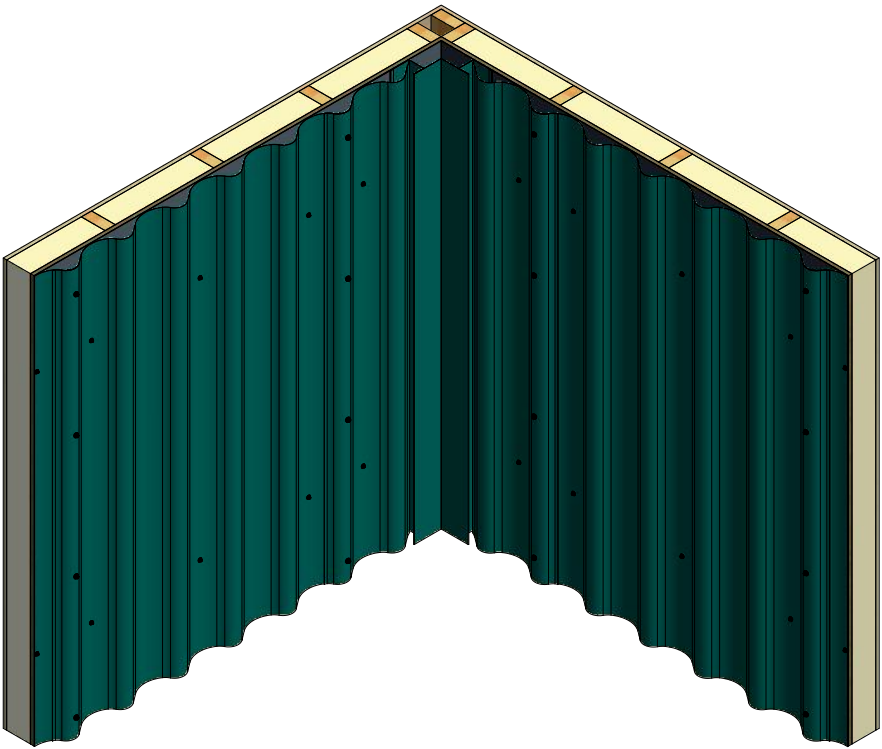


ATAS INTERNATIONAL, INC
Allentown PA
610-395-8445
Mesa AZ
480-558-7210


Vertical Panel



- Inside Corner Post
- #10 x 1" Wafer Head Screw
- Membrane Strip over Inside Corner Post
- Water and Air Resistive Barrier
- Wave Panel
- Interior Finish
- 1/2" Plywood (min.)
- Insulation
- #10 x 2" Painted Hex Washer Head Screw with Washer



Inside Corner Post

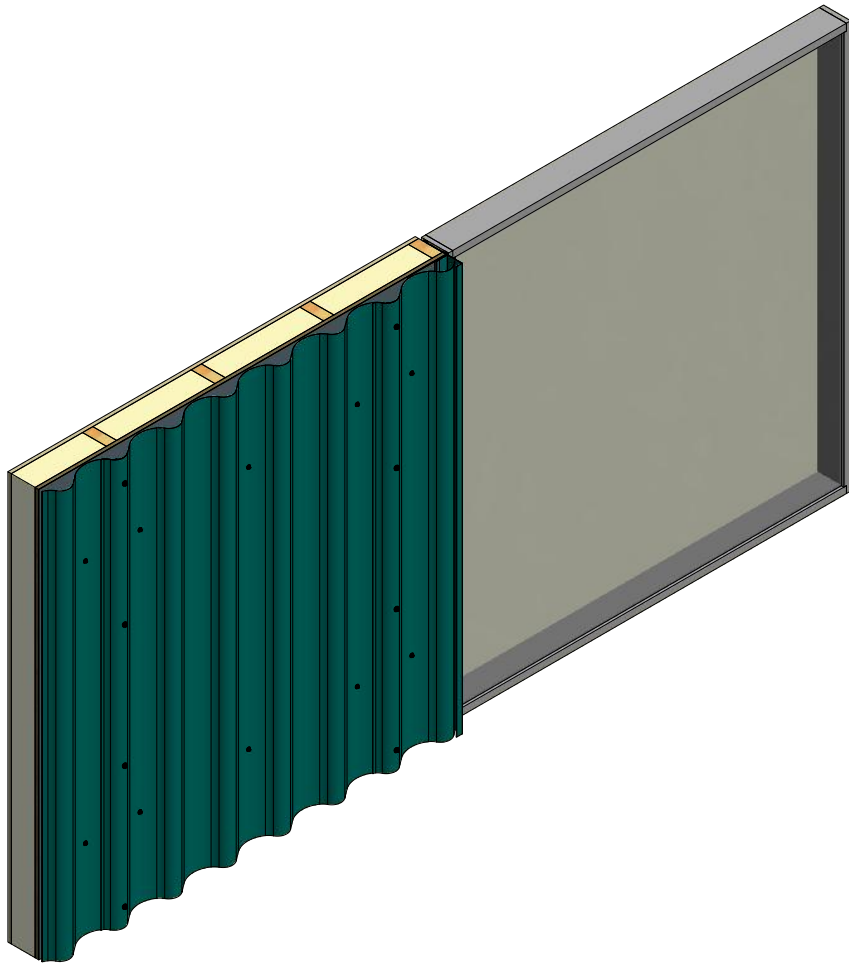
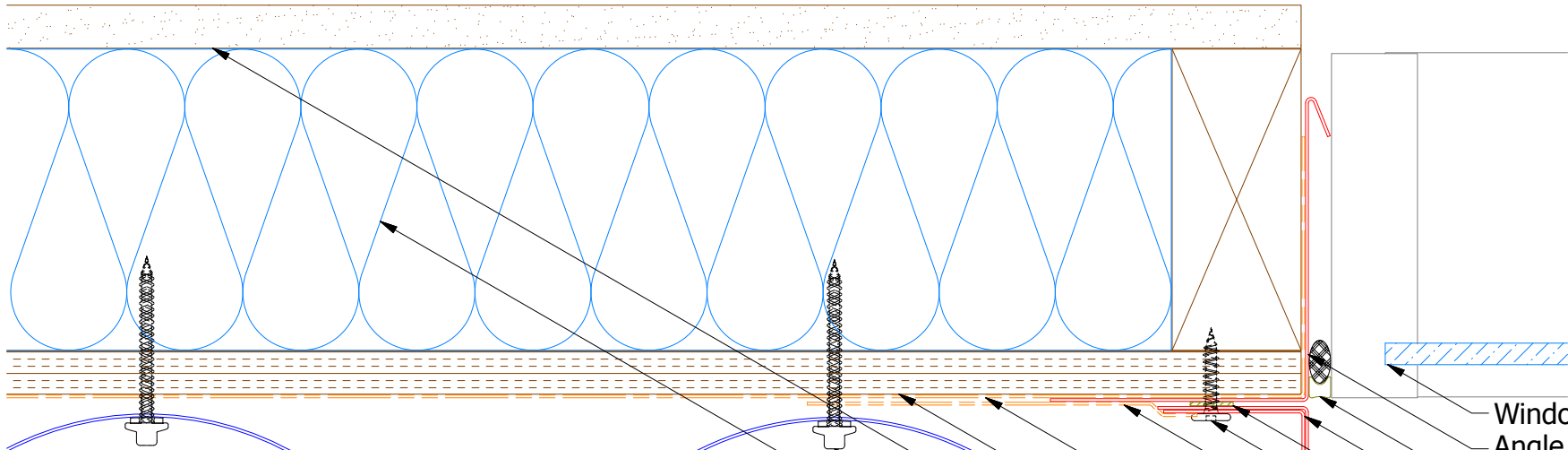


ATAS INTERNATIONAL, INC
Allentown PA
610-395-8445
Mesa AZ
480-558-7210

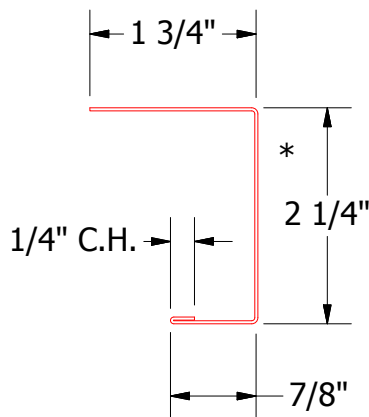
TITLE			
Wave Panel Inside Corner Detail			
DWG. NO.	DR	DATE	
	DMR	8/31/2016	
MATERIAL	APP	DATE	
	SH. SIZE	B	SCALE X:X

REV. NO.	DATE	DESCRIPTION OF REVISION	BY	APP

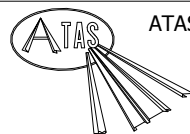
Vertical Panel



- Window
- Angle with Return
- Backer Rod and Sealant
- Angle Trim
- Butyl Tape
- #10 x 1" Wafer Head Screw
- Membrane Strip over J Channel and Angle Trim
- J Channel
- Water and Air Resistive Barrier
- 1/2" Plywood (min.)
- Interior Finish
- #10 x 2" Painted Hex Washer Head Screw with Washer
- Insulation
- #14 x 7/8" Painted Hex Washer Head Fastener with Washer



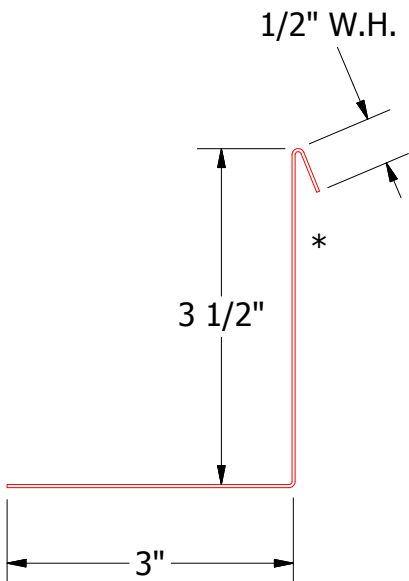
J Channel



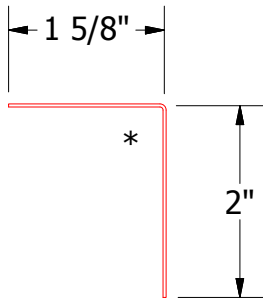
ATAS INTERNATIONAL, INC
Allentown PA
610-395-8445
Mesa AZ
480-558-7210

Wave Panel Jamb Detail

					Wave Panel Jamb Detail			
					DWG. NO.		DR DMR	DATE 8/31/2016
					MATERIAL		APP	DATE
REV. NO.	DATE	DESCRIPTION OF REVISION	BY	APP			SH. SIZE B	SCALE X:X



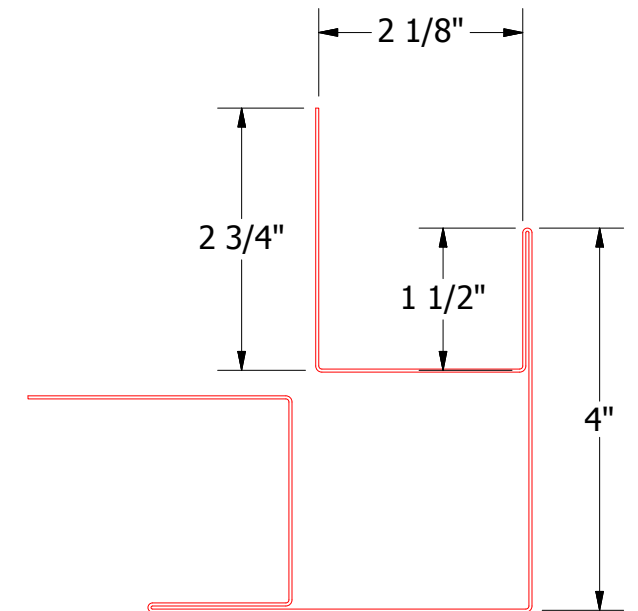
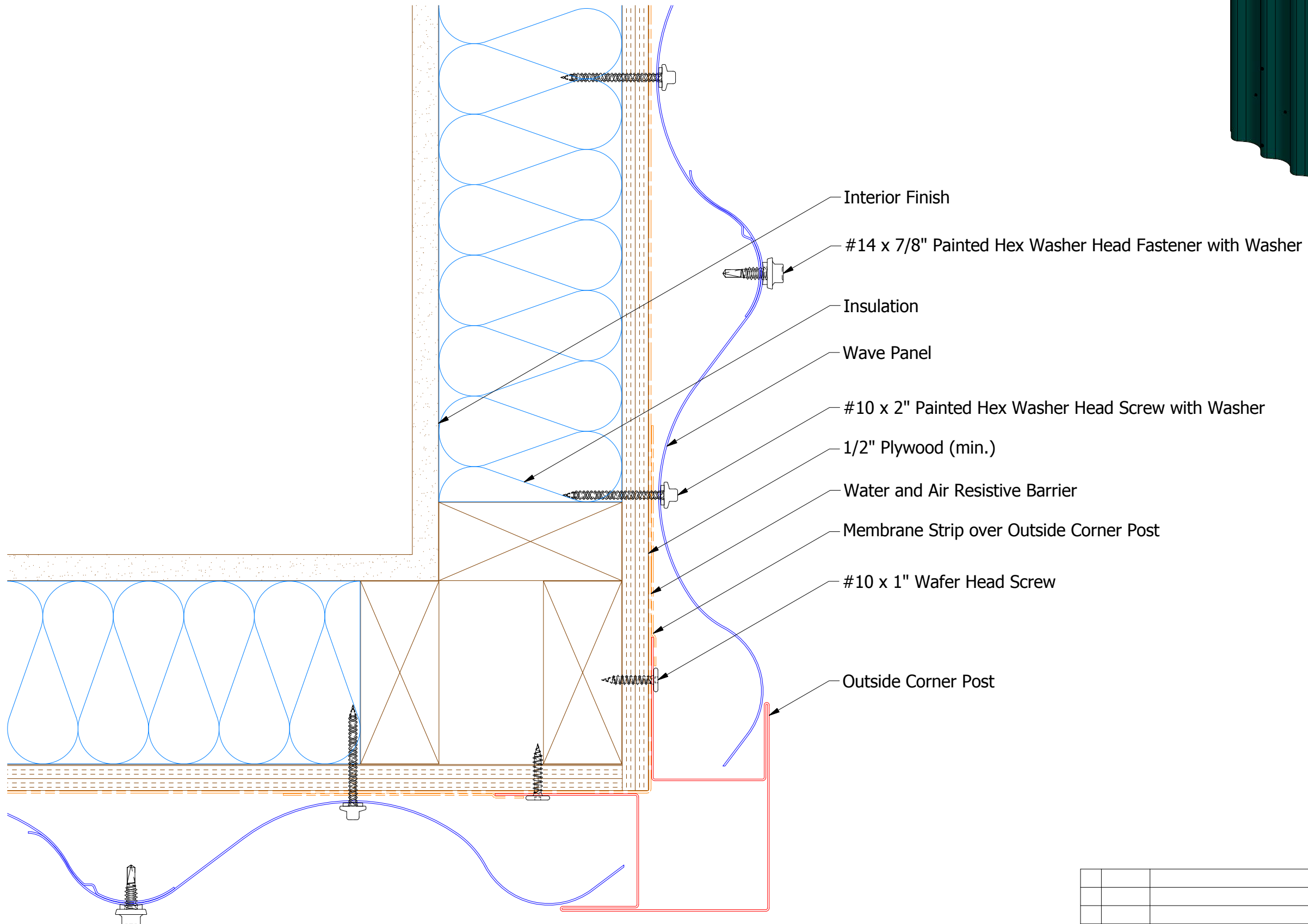
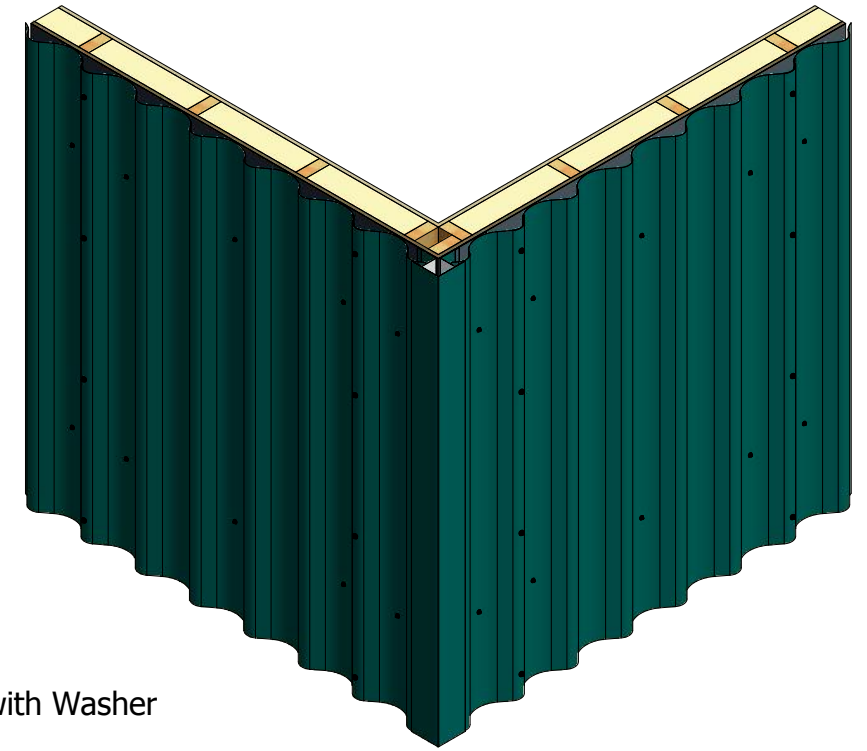
Angle with Return



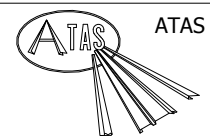
Angle Trim

					Wave Panel Jamb Detail			
					DWG. NO.		DR DMR	DATE 8/31/2016
					MATERIAL		APP	DATE
REV. NO.	DATE	DESCRIPTION OF REVISION	BY	APP			SH. SIZE B	SCALE X:X

Vertical Panel

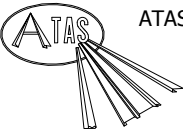
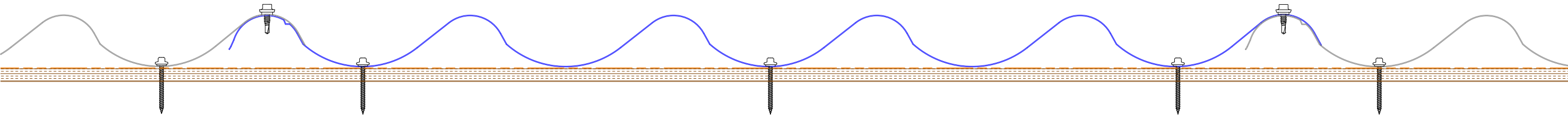
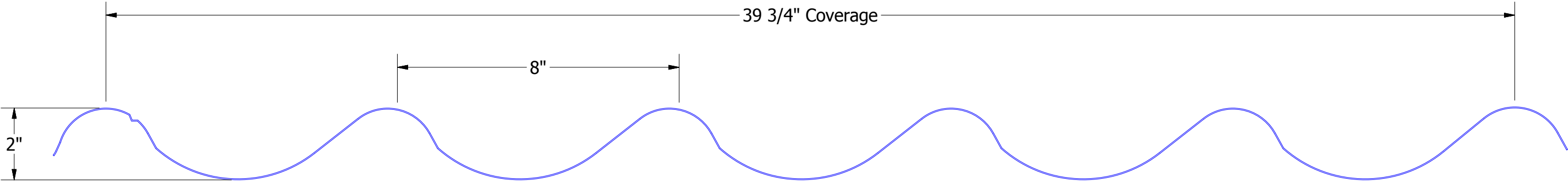
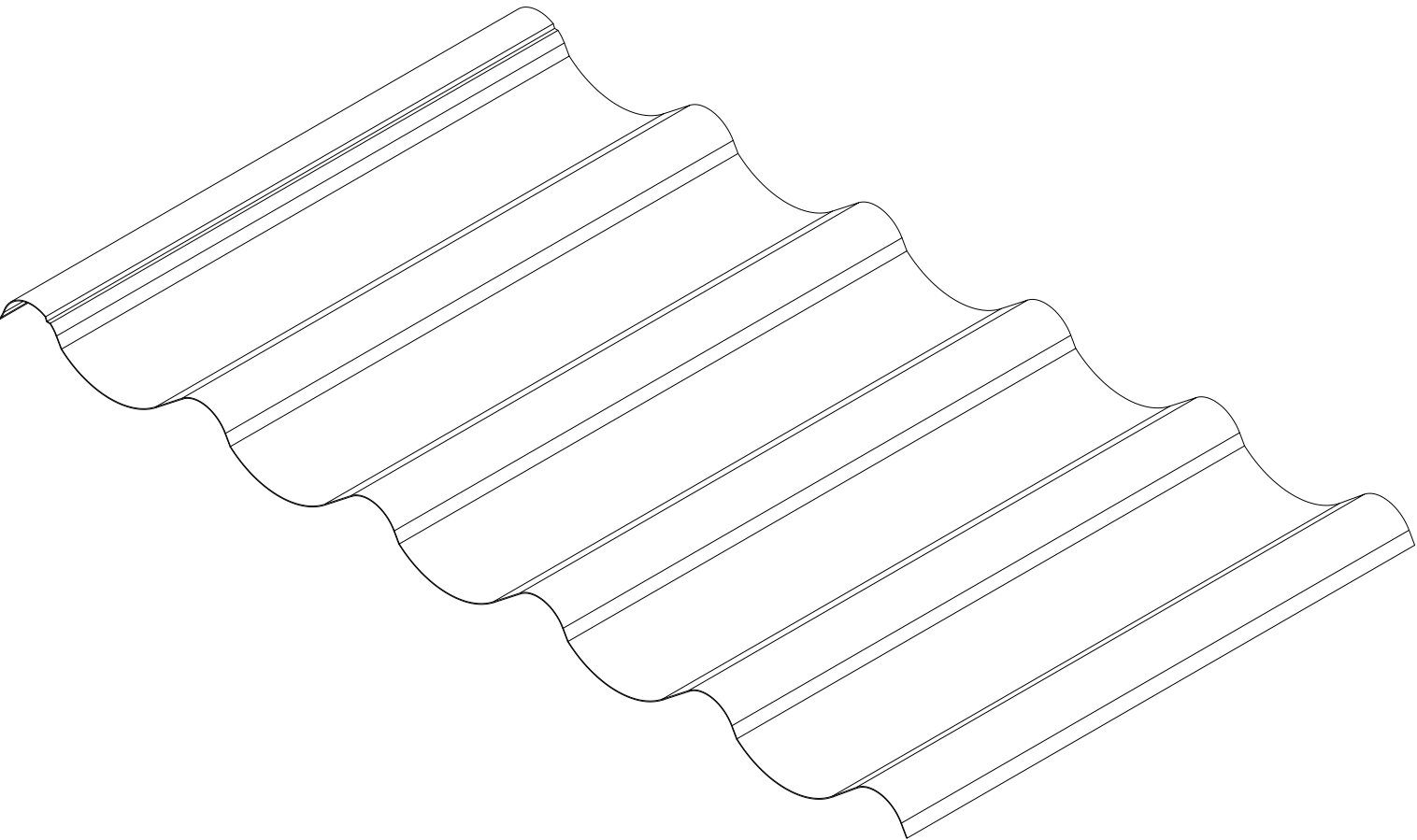


Outside Corner Post



ATAS INTERNATIONAL, INC
Allentown PA
610-395-8445
Mesa AZ
480-558-7210

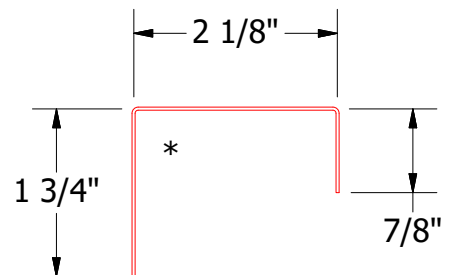
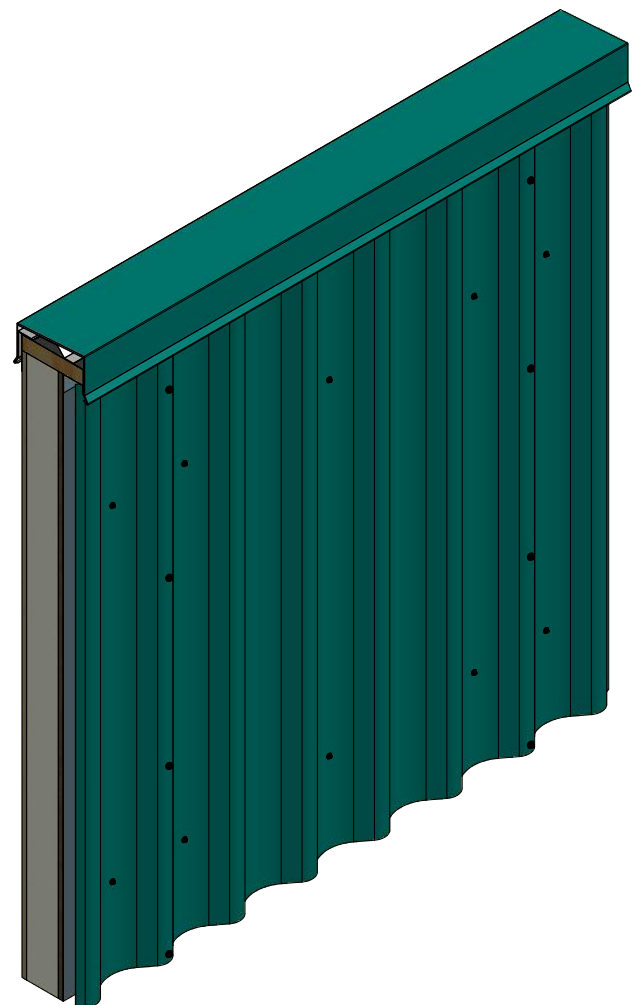
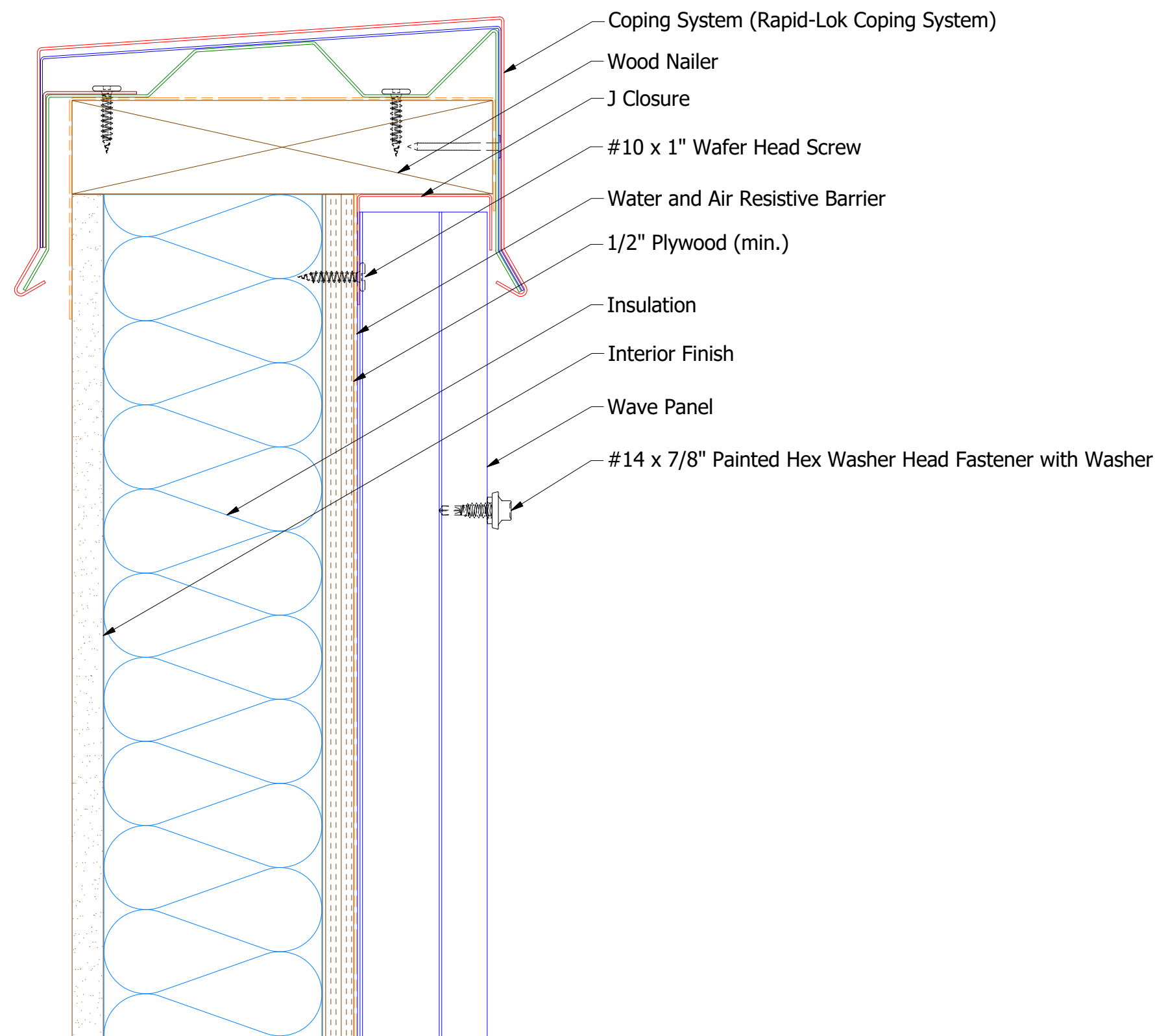
					Wave Panel Outside Corner Detail			
					DWG. NO.		DR	DATE
							DMR	8/31/2016
					MATERIAL		APP	DATE
REV. NO.	DATE	DESCRIPTION OF REVISION		BY	APP	SH. SIZE		SCALE
						B		X:X



ATAS INTERNATIONAL, INC
Allentown PA
610-395-8445
Mesa AZ
480-558-7210

					Wave Panel Profile Detail		
					DWG. NO.	DR KRK	DATE 12/29/2017
						APP	DATE
REV. NO.	DATE	DESCRIPTION OF REVISION	BY	APP	MATERIAL	SH. SIZE B	SCALE X:X

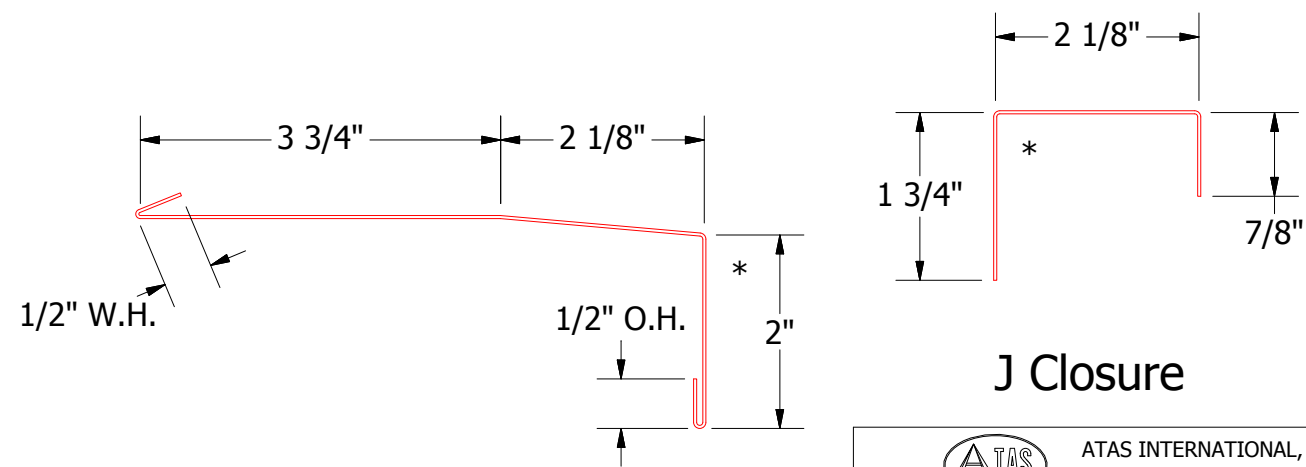
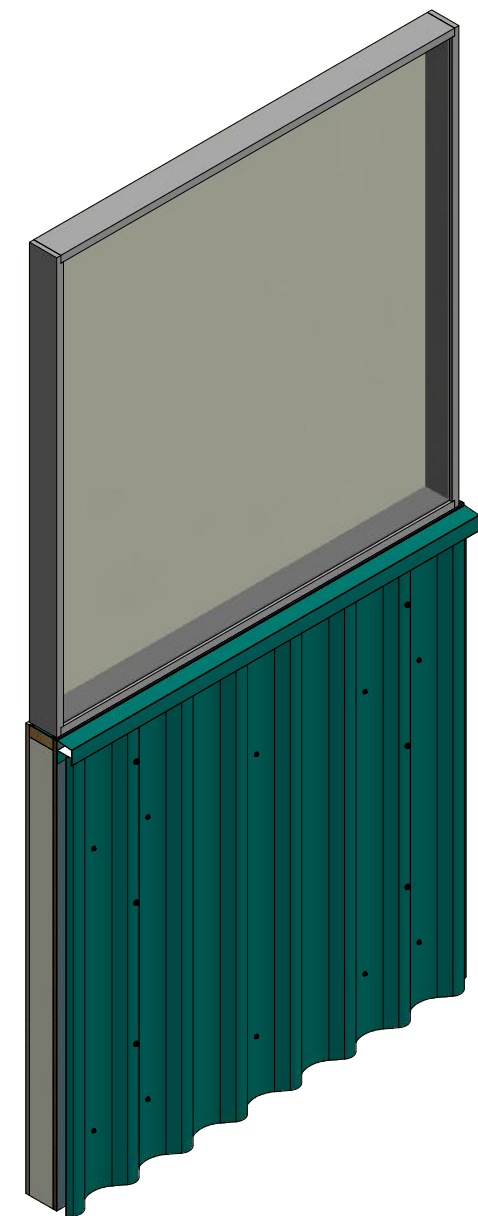
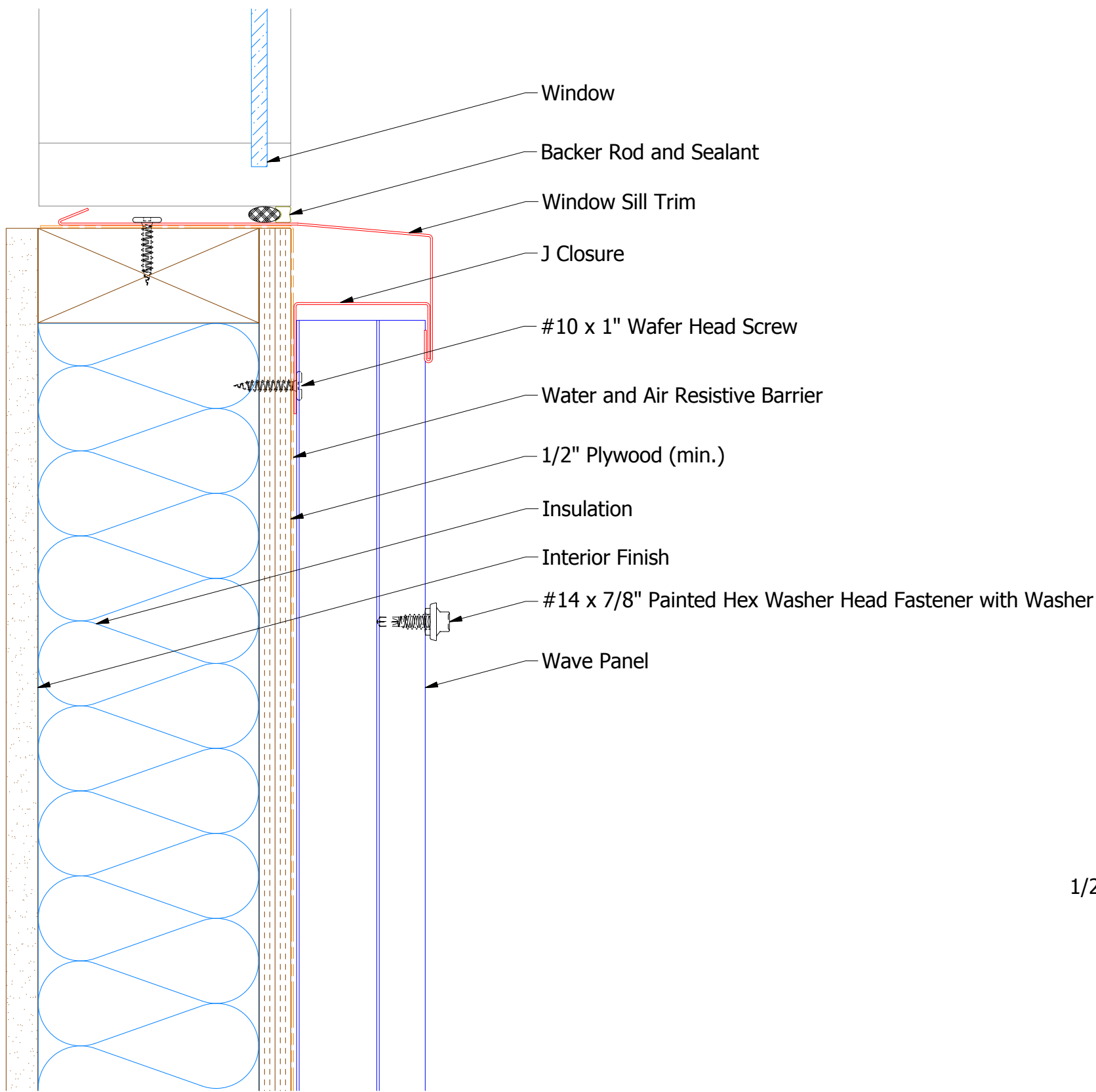
Vertical Panel



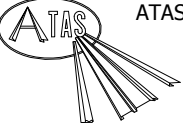
J Closure

						TITLE		Wave Panel Top of Wall Detail	
						DWG. NO.		DR	DATE
								DMR	9/1/2016
						MATERIAL		APP	DATE
REV. NO.	DATE	DESCRIPTION OF REVISION		BY	APP			SH. SIZE	SCALE
								B	X:X

Vertical Panel



Window Sill Trim



ATAS INTERNATIONAL, INC
Allentown PA
610-395-8445
Mesa AZ
480-558-7210

TITLE			
Wave Panel Window Sill Detail			
DWG. NO.	DR	DATE	
	DMR	9/1/2016	
MATERIAL	APP	DATE	
SH. SIZE	B	SCALE	X:X

REV. NO.	DATE	DESCRIPTION OF REVISION	BY	APP