

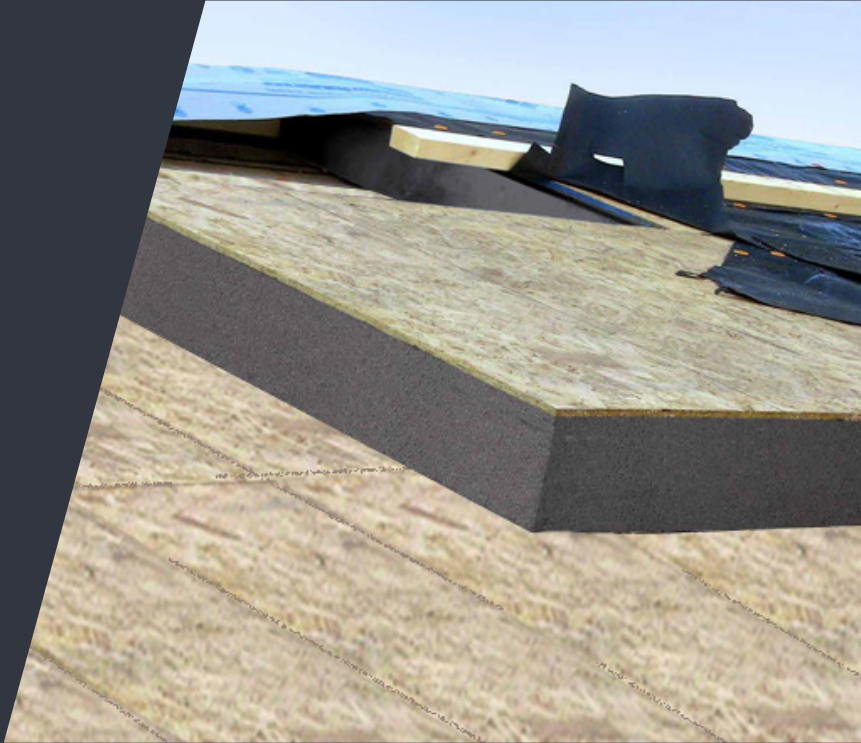


# Nailbase

Nailable Wall and Roof Insulation

Nailbase works to reduce heat driven into the conditioned or living space in the summer and keeps heat in the envelope during the winter months. ThermalStar Nailbase is an excellent solution for a variety of roof systems:

- New construction or retrofit
- Residential and light commercial construction
- Steep and low slope
- Vaulted and cathedral ceilings
- Underlayment for shingle, tile, slate and metal roofing systems



**EPSX<sup>®</sup>** TECHNOLOGY ADVANTAGE



Moisture Resistant



Stable R-value



Environmentally Friendly



Limited Lifetime Warranty

Property	ASTM Test Method	STANDARD		GX SERIES	
		Nailbase 2	Nailbase 4	Nailbase 2 GX	Nailbase 4 GX
Total Thickness (nominal)	C578	2"	4"	2"	4"
Approximate Total Panel Weight	-	54 lbs/sheet	59 lbs/sheet	54 lbs/sheet	59 lbs/sheet
EPS Compressive Strength (minimum psi) @ 10% Deformation	D1621	12	12	12	12
Total Product R-value (minimum) at 75°F mean temperature	C518	R7	R14.8	R8.3	R17.7
Total Product R-value (minimum) at 40°F mean temperature	C518	R7.5	R15.9	R8.6	R18.4
Total Product R-value (minimum) at 25°F mean temperature	C518	R7.8	R16.6	R8.9	R19.1
ASTM Classification of EPS	C578	Type I	Type I	Type I	Type I
Vapor Permeance of EPS component*	E96 Desiccant Method	2.5 perm	1.5 perm	2.5 perm	1.5 perm
Foam Surface Burning- Flame Spread and Smoke Developed	E84	Flame Spread 20, Smoked Developed 400 (meets code)		Flame Spread 5, Smoke Developed 170 (meets code)	
Maximum Use Temperature	-	180°F		180°F	

<sup>1</sup> Vapor permeance of OSB is generally 0.8 perm dry, up to 2 perm.

Standard features include:

- High performance rigid insulation laminated to 7/16" exposure I APA PS2-10 OSB
- Available as 4'x8' sheets, either 2" or 4" thick. Additional thicknesses can be accommodated using a second layer of ThermalStar Foam Accessory Sheets



**ThermalStar**<sup>®</sup>  
Rigid Insulation

# Advantages of Nailbase:

## STABLE R-VALUE:

The thermal performance of the EPS component of Nailbase is stable over time, assuring R-value meets design requirements over the life of the structure.

ThermalStar Nailbase is available with a total product R-value of R7, R8.3, R14.8 or R18.8. If additional rigid insulation is needed beyond the Nailbase panel, using a layer of ThermalStar Foam Accessory sheets can be used to reach the desired R-value. Foam Accessory sheets are available in the following R-values:

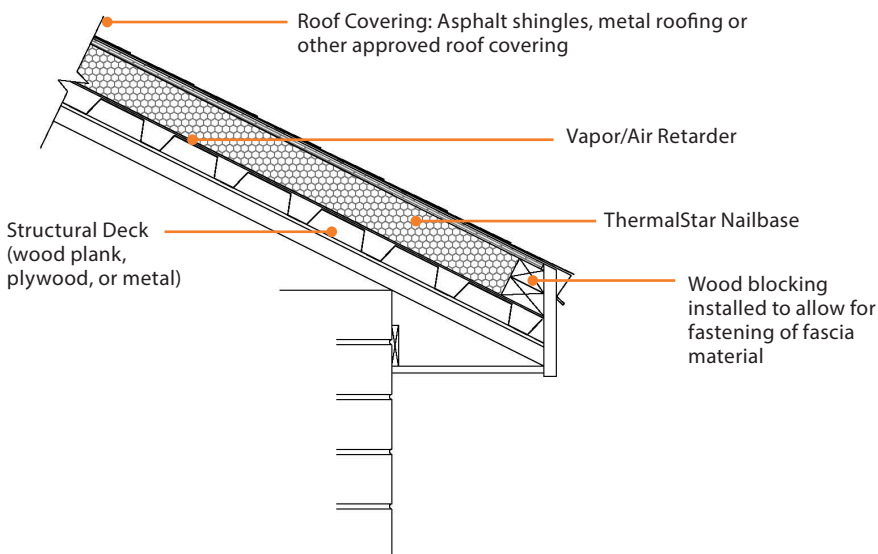
Thickness	Standard Accessory Sheet	GX Series Accessory Sheet
1"	R3.9 (EP1048096_216)	R4.7 (EP1048096_217)
2"	R7.8 (EP2048096_176)	R9.4 (EP2048096_177)
4"	R15.6 (EP4048096_78)	R18.8 (EP4048096_79)
6"	R23.4 (EP6048096_47)	R28.2 (EP6048096_48)

## ENVIRONMENTALLY FRIENDLY:

The insulating cells of the EPS component of Nailbase simply contain air, and thus an extremely low global warming potential (GWP).

## SYSTEM INSTALLATION:

Nailbase saves on labor with a one step installation by providing insulation and a nailable substrate in one product for various roofing applications.



Specify ThermalStar Nailbase on Your Next Project!

## INSTALLATION AND HANDLING

ThermalStar Nailbase GX must be protected from direct sunlight during storage with an opaque covering, as it is more susceptible to melting in these conditions than standard ThermalStar Nailbase.

Refer to the ThermalStar Nailbase Installation Guide for further installation and handling instruction.

## SAFETY

SDS for this product available at

[AtlasMoldedProducts.com](http://AtlasMoldedProducts.com).

Dust generated from sanding or cutting Nailbase should be avoided using a dust mask. Nailbase insulation is combustible and the product should be protected from ignition sources such as open flames or welder's torch. Applications not specifically listed in UL ER16529.1 require permanent separation of Nailbase insulation from the interior of the building by a thermal barrier such as drywall or concrete for fire safety.

## CODE COMPLIANCE

ThermalStar Nailbase insulation complies with the model building codes when properly installed:

- Surface Burning
- Physical Properties
- Std Reg #CA472
- International Residential Code (IRC)
- International Building Code (IBC)
- International Energy Conservation Code  
ASTM C578- see product marking for type
- CAN/ULC S102.2, S701

ThermalStar Nailbase is not a substitute for structural resisting sheathing. It is designed to be installed alone or with other layers of rigid insulation over existing structural wall or roof sheathing.

**ThermalStar**<sup>®</sup>  
Rigid Insulation

ThermalStar, the ThermalStar tag line, the color "Pale Creamy Orange," and EPS<sup>®</sup> are registered trademarks of Atlas Roofing Corporation

Atlas Molded Products, a Division of Atlas Roofing Corp  
8240 Byron Center Ave SW, Byron Center, MI 49315  
800.917.9138, [AtlasMoldedProducts.com](http://AtlasMoldedProducts.com)