



SHINGLES, UNDERLAYMENTS & ACCESSORIES ***PRODUCT GUIDE***

www.AtlasRoofing.com



Shingles



Underlayments



Hip & Ridge



Starter Strips



YOUR ROOF SHOULD BE AN ATLAS SYSTEM

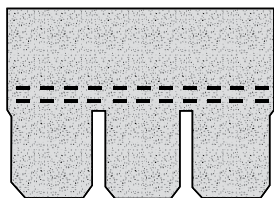


Atlas Signature Select® is an integrated roofing system with components specifically designed to perform well together. That's why we'll UPGRADE the Premium Protection Period for your roof when you install qualifying roof system components from Atlas.

ROOF SHINGLES FEATURING SCOTCHGARD™ PROTECTOR



Featuring



Length: 22 11/16" / 576.3 mm
Width: 18 1/2" / 469.9 mm
Exposure: 8 1/2" / 215.9 mm
Shingles Per Bundle: 25

Features & Benefits

Shingle Featuring Scotchgard™ Protector
Lifetime* Algae Resistance Limited Warranty
Lifetime* Limited Warranty
130 mph Limited Wind Warranty
Class 4 Impact Resistance
Manufactured Using SBS Asphalt
Up To 20-Year Peace of Mind
Fastac® Double Sealant Lines

ASTM

D7158-06, Class H Wind Resistance,
Passed at 150 mph
D6381, Uplift Resistance
D3018, Type 1
D3161, Class F, Tested at 110 mph
D3462, As Manufactured
E108, Class A Fire Resistance

UL

790, Class A Fire Resistance
2390, Class H Wind Resistance
2218, Class 4 Impact Resistance

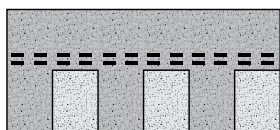
Codes and Complies

Meets AC438 Criteria
CAN/CSA-A123.5-M90
Florida Building Code Approved – FL 9792
Miami-Dade County Product Control Approved

COLORS: Blackstone Slate^(A), Chalkstone Slate^(A),
Emerald Slate^(A), Hearthstone Slate^(A), Pewter Slate^(A),
Weathered Slate^(A)



Featuring



Length: 39 3/8" / 1000.1 mm
Width: 14" / 355.6 mm
Exposure: 6" / 152.4 mm
Shingles Per Bundle: 20

Features & Benefits

Shingle Featuring Scotchgard™ Protector
Lifetime* Algae Resistance Limited Warranty
Lifetime* Limited Warranty
130 mph Limited Wind Warranty
Class 4 Impact Resistance
Manufactured Using SBS Asphalt
Up To 20-Year Peace of Mind
Fastac® Double Sealant Lines

ASTM

D7158, Class H Wind Resistance,
Passed at 150 mph
D6381, Uplift Resistance
D3018 Type 1
D3161, Class F, Tested at 110 mph
D3462, As Manufactured
E108, Class A Fire Resistance

UL

790, Class A Fire Resistance
2390, Class H Wind Resistance
2218, Class 4 Impact Resistance

Codes and Complies

Meets AC438 Criteria
CAN/CSA-A123.5-M90
Florida Building Code Approved – FL 9792
Miami-Dade County Product Control Approved

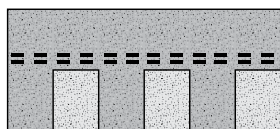
COLORS: Black Shadow, Burnt Sienna, Desert Shake,
Hearthstone Gray, Heatherblend, Highland Brown, Majestic
Shake, Pewter, Weathered Wood



Plant Manufacturing Location: D - DAINGERFIELD, TX



Featuring



Length: 39 3/8" / 1000.1 mm
Width: 14" / 355.6 mm
Exposure: 6" / 152.4 mm
Shingles Per Bundle: 20

Features & Benefits

Pristine Shingle Featuring Scotchgard™
Protector
Lifetime* Algae Resistance Limited Warranty
Lifetime* Limited Warranty
130 mph Limited Wind Warranty
Up To 15-Year Peace of Mind
Fastac® Double Sealant Lines

ASTM

D7158, Class H Wind Resistance,
Passed at 150 mph
D6381, Uplift Resistance
D3018, Type 1
D3161, Class F, Tested at 110 mph
D3462, As Manufactured
E108, Class A Fire Resistance

UL

790, Class A Fire Resistance
2390, Class H Wind Resistance

Codes and Complies

Meets AC438 Criteria
CAN/CSA-A123.5-M90
Florida Building Code Approved – FL 9792
Miami-Dade County Product Control Approved

COLORS: Pristine Black, Pristine Desert, Pristine Dove, Pristine Green,
Pristine Hearthstone, Pristine Heather, Pristine Hickory, Pristine Oyster,
Pristine Pearl, Pristine Pewter, Pristine Sienna, Pristine Tan,
Pristine Weathered, Pristine Weathered Shadow

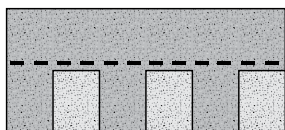


Plant Manufacturing Location: D - DAINGERFIELD, TX H - HAMPTON, GA M - MERIDIAN, MS

ROOF SHINGLES

ProLAM™

Professional Grade Architectural Shingle



Length: 39 3/8" / 1000.1 mm
Width: 14" / 355.6 mm
Exposure: 6" / 152.4 mm
Shingles Per Bundle: 20

Features & Benefits

Algae Resistant Shingle
Lifetime* Limited Warranty
110 mph Limited Wind Warranty
Up To 10-Year Peace of Mind
3M Ceramic Coated Granules
Single Sealant Line

ASTM

D7158, Class H Wind Resistance,
Passed at 150 mph
D6381, Uplift Resistance
D3018, Type 1
D3161, Class F, Tested at 110 mph
D3462, As Manufactured
E108, Class A Fire Resistance

UL

790, Class A Fire Resistance
2390, Class H Wind Resistance

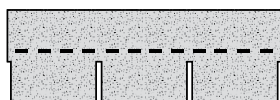
Codes and Compliances

Meets AC438 Criteria
CAN/CSA-A123.5-M90
Florida Building Code Approved – FL 9792
Miami-Dade County Product Control Approved

COLORS: Black Shadow, Burnt Sienna, Desert Shake, Hearthstone Gray, Weathered Wood



Plant Manufacturing Location: **H** - HAMPTON, GA **M** - MERIDIAN, MS



Length: 36" / 914.4 mm
Width: 12" / 304.8 mm
Exposure: 5" / 127 mm
Shingles Per Bundle: 26

Features & Benefits

Algae Resistant Shingle
30-Year* Limited Warranty
60 mph Limited Wind Warranty
Up To 10-Year Peace of Mind
3M Ceramic Coated Granules

ASTM

D7158, Class H Wind Resistance,
Passed at 150 mph
D6381, Uplift Resistance
D3018, Type 1
D3161, Type 1, Class F,
Tested at 110 mph
D3462, As Manufactured
E108, Class A Fire Resistance

UL

790, Class A Fire Resistance
2390, Class H Wind Resistance

Codes and Compliances

Meets AC438 Criteria
CAN/CSA-A123.5-M90
Florida Building Code Approved – FL 9792
Miami-Dade County Product Control Approved

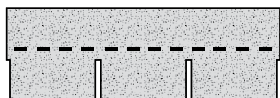
COLORS: Black Shadow^(A,H), Burnt Sienna^(A,H), Desert Shake^(A,H), Dove Gray^(H), Hearthstone Gray^(A,H), Heatherblend^(A,H), Oyster Shell^(H), Pewter^(A), Silver White^(A,H), Tan Mist^(H), Weathered Wood^(A,H), Woodland Green^(A)



Plant Manufacturing Location: **A** - ARDMORE, OK **H** - HAMPTON, GA

TOUGH-GLASS™

THE FIBERGLASS ORIGINAL



Length: 36" / 914.4 mm
Width: 12" / 304.8 mm
Exposure: 5" / 127 mm
Shingles Per Bundle: 25

Features & Benefits

20-Year* Limited Warranty
60 mph Limited Wind Warranty
SBS Modified Asphalt Wind Sealant
3M Ceramic Coated Granules
3-Year Peace of Mind

ASTM

D7158, Class H Wind Resistance,
Passed at 150 mph
D6381, Uplift Resistance
D3018, Type 1
D3161, Type 1, Class F,
Tested at 110 mph
D3462, As Manufactured
E108, Class A Fire Resistance

UL

790, Class A Fire Resistance
2390, Class H Wind Resistance

Codes and Compliances

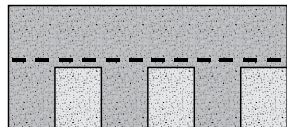
Meets AC438 Criteria
CAN/CSA-A123.5-M90
Florida Building Code Approved – FL 9792
Miami-Dade County Product Control Approved

COLORS: Black Shadow^(A,H), Weathered Wood^(A,H), Desert Shake^(A,H), Hearthstone Gray^(A,H), Burnt Sienna^(A,H)



Plant Manufacturing Location: **A** - ARDMORE, OK **H** - HAMPTON, GA

FRANKLIN PLANT



Length: 38 1/4" / 972 mm
Width: 13 1/8" / 333.4 mm
Exposure: 5 5/8" / 142.9 mm
Shingles Per Bundle: 22

Features & Benefits

Pristine Shingle Featuring Scotchgard™ Protector
Lifetime* Limited Warranty Against Algae Growth
Lifetime* Limited Warranty Up To 130 mph Limited Wind Warranty
Up To 15-Year Peace of Mind
Fastac® Single Sealant Line

ASTM

D7158, Class H Wind Resistance,
Passed at 150 mph
D6381, Uplift Resistance
D3018, Type 1
D3161, Class F, Tested at 110 mph
D3462, As Manufactured
E108, Class A Fire Resistance

UL

790, Class A Fire Resistance
2390, Class H Wind Resistance

Codes and Compliances

Meets AC438 Criteria
CAN/CSA-A123.5-M90
Florida Building Code Approved – FL 9792
Miami-Dade County Product Control
Approved

COLORS: Pristine Black^(F), Pristine Desert^(F), Pristine Dove^(F), Pristine Green^(F), Pristine Hearthstone^(F), Pristine Heather^(F), Pristine Hickory^(D), Pristine Oyster^(H), Pristine Pearl^(H), Pristine Pewter^(F), Pristine Sienna^(F), Pristine Tan^(H), Pristine Weathered^(F), Pristine Weathered Shadow^(H)



Plant Manufacturing Location: **D** - DAINGERFIELD, TX

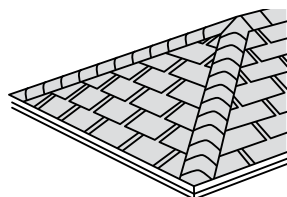
F - FRANKLIN, OH

H - HAMPTON, GA

M - MERIDIAN, MS

ROOF SHINGLE ACCESSORIES

PRO-CUT[®] HIP & RIDGE SHINGLE



Dimensions: 12" x 12"
Exposure: 5 5/8"
Coverage: 31 Linear Feet
Shingles Per Package: 66

In order to qualify for the Lifetime Algae Warranty, installation must include Pro-Cut® Hip and Ridge featuring Scotchgard™ Protector with Atlas Pristine shingles featuring Scotchgard™ Protector.

ASTM

D3018, Type I
D3462, As Manufactured
E108, Class A Fire Resistance

UL

790, Class A Fire Resistance
2218, Class 4 Impact Resistance**

Codes and Compliances

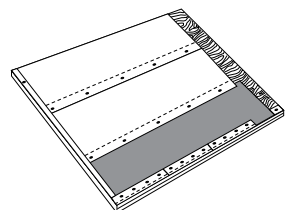
Florida Building Code Approved - FL 9792
Miami-Dade County Product Control
Approved
Matches Wind Performance of Atlas
Field Shingles

** SBS AVAILABLE FROM THE ARDMORE, OK
MANUFACTURING PLANT ONLY



NOTE: See Pro-Cut® Hip & Ridge data sheet for color matches.

PRO-CUT[®] STARTER STRIP



6x Starter Strip

Shingle Dimensions: 7 1/2" x 36" nominal
Exposure Limits: Up To 6"
Per Bundle: 118 Linear Feet

6xR Starter Strip Roll

Roll Dimensions: 7.2" x 33' 4"
Exposure Limits: Up To 6"
Per Roll: 33' 4"

8.5x Starter Strip

Shingle Dimensions: 10 1/2" x 22 11/16"
Exposure Limits: Up To 8 1/2"
Per Bundle: 79 Linear Feet

10x Starter Strip

Shingle Dimensions: 12" x 36" nominal
Exposure Limits: Up To 10"
Per Bundle: 78 Linear Feet



* Refer To Atlas Lifetime Limited Warranty For All Coverage Requirements

HIGH PERFORMANCE UNDERLAYMENT



Product Specifications

Length: 250'
Width: 48"
Square Per Roll Coverage: 10
Coverage with 4" Lap: 917 sq. ft.

Codes & Compliances

AC 207, Ultraviolet Exposure for 180 Days
AC 207, Accelerated Aging
ASTM E108, Fire Resistance
ASTM D6757, Inorganic Shingle Underlayment Standard

Performance characteristics exceed -
ASTM D4869, Type I, Type II, Type III, Type IV, (Standard specification for asphalt saturated felt), ASTM D226 Type I & Type II
UL 790, Fire Resistance
UL Classified as a Prepared Roofing Accessory
Florida Building Code Approved - FL 11915
Miami-Dade County Product Control Approved



Product Specifications

Length: 250'
Width: 48"
Square Per Roll Coverage: 10
Coverage with 4" Lap: 917 sq. ft.

Codes & Compliances

AC 207, Ultraviolet Exposure for 60 Days
AC 207, Accelerated Aging
ASTM E108, Fire Resistance
ASTM D6757, Inorganic Shingle Underlayment Standard

Performance characteristics exceed -
ASTM D4869, Type I, Type II, Type III, Type IV, (Standard specification for asphalt saturated felt), ASTM D226 Type I & Type II
UL Classified as a Prepared Roofing Accessory



Product Specifications

Length: 141.5'
Width: 36"
Square Per Roll Coverage: 4
Coverage with 2" Lap: 400 sq. ft.

Codes & Compliances

UL Classified as a Roofing Accessory
ASTM D6757
Florida Building Code Approved - FL 11915
Meets Performance Characteristics of
ASTM D4869 (#15 & #30 Standard) & ASTM D226 Type I



Product Specifications

Length: 72'
Width: 36"
Square Per Roll Coverage: 2
Coverage with 2" Lap: 200 sq. ft.

Codes and Compliances

ASTM D4869, Type IV
ASTM D226, Type II
ASTM D6757
Florida Building Code Approved - FL 16226



ASPHALT SATURATED ORGANIC FELT UNDERLAYMENT

#30 Specification Felt



Product Specifications

Length: 72'
Width: 36"
Square Per Roll Coverage: 2
Square Feet Per Roll: 216

Codes & Compliances

ASTM D4869, Type IV
ASTM D226, Type II
Florida Building Code Approved - FL 11915

#15 Specification Felt



Product Specifications

Length: 144'
Width: 36"
Square Per Roll Coverage: 4
Square Feet Per Roll: 432

Codes & Compliances

ASTM D4869, Type II
ASTM D226, Type I
Florida Building Code Approved - FL 11915

#30 Organic Saturated Felt



Product Specifications

Length: 72'
Width: 36"
Square Per Roll Coverage: 2
Square Feet Per Roll: 216

Codes & Compliances

ASTM D4869
Florida Building Code Approved - FL 11915

#15 Organic Saturated Felt



Product Specifications

Length: 144'
Width: 36"
Square Per Roll Coverage: 4
Square Feet Per Roll: 432

Codes & Compliances

ASTM D4869, Type I
Florida Building Code Approved - FL 11915

SBS PEEL & STICK UNDERLAYMENT



Product Specifications

Length: 33.3' (1 sq.) 72.1' (2 sq.)
Width: 36"
Square Per Roll Coverage: 1 or 2

Standards & Code Listings

Underwriters Laboratories Class A and Class C Fire Rating – Based on Roof Covering

ASTM D1970, Standard Ice Dam Underlayment
ICC-ES Report ER 1783
Florida Building Code Approved - FL 11915
Miami-Dade County Product Control Approved



Product Specifications

Length: 66.6'
Width: 36"
2 Square Roll Provides Approximately* 200 sq. ft. of Material

Standards & Code Listings

Underwriters Laboratories Class A and Class C Fire Rating – Based on Roof Covering
ASTM D1970, Standard Ice Dam Underlayment



Product Specifications

Length: 66.6'
Width: 36"
2 Square Roll Provides Approximately* 200 sq. ft. of Material

Standards & Code Listings

Underwriters Laboratories Class A and Class C Fire Rating – Based on Roof Covering

ASTM D1970, Ice Dam & Metal Roof Underlayment
ICC-ES Report ER 1783
Florida Building Code Approved - FL 11915
Miami-Dade County Product Control Approved



Product Specifications

Length: 72'
Width: 36"
2 Square Roll Provides Approximately* 200 sq. ft. of Material

Standards & Code Listings

Underwriters Laboratories Class A and Class C Fire Rating – Based on Roof Covering

ASTM D1970, Premium Ice Dam & Tile Underlayment
Miami-Dade County TAS 103 Stack Test
Florida Building Code Approved - FL 11915
Miami-Dade County Product Control Approved



Product Specifications

Length: 66.6'
Width: 36"
2 Square Roll Provides Approximately* 200 sq. ft. of Material

Standards & Code Listings

Underwriters Laboratories Class A and Class C Fire Rating – Based on Roof Covering

ASTM D1970, Standard Ice Dam Underlayment
ICC-ES Report ER 1783
Florida Building Code Approved - FL 11915
Miami-Dade County Product Control Approved



Product Specifications

Length: 33.3' (1 sq.) 66.6' (2 sq.)
Width: 36"

Standards & Code Listings

ASTM D1970, Moisture Vapor Permeability
ASTM D4869, Liquid Water Transmission

† Also known as WeatherMaster® 100 SE, 200 SE, Polyseal™ SE, TU Ultra SE & Valley Liner. SE (selvage edge) is only available in Southeast, Southwest, Southern and Western Atlas Sales Regions.



CORPORATE SALES & MARKETING
2000 RiverEdge Parkway, Suite 800
Atlanta, Georgia 30328

www.AtlasRoofing.com

SALES OFFICES

Daingerfield, TX
(800) 270-2852
FAX (903) 645-2291

Ardmore, OK
(800) 261-2852
FAX (580) 223-6894

Franklin, OH
(800) 260-2852
FAX (937) 746-6040

Hampton, GA
(800) 251-2852
FAX (770) 946-5249

Meridian, MS
(800) 933-2721
FAX (601) 696-2018