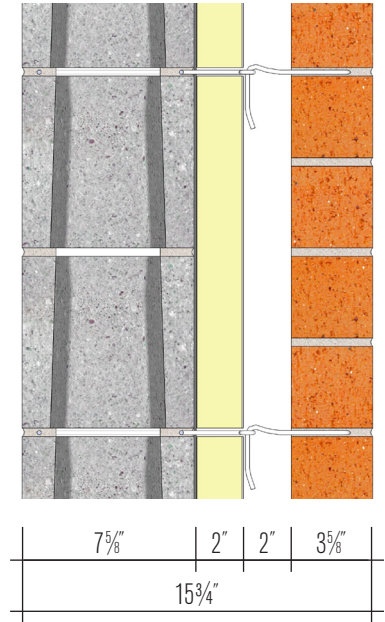
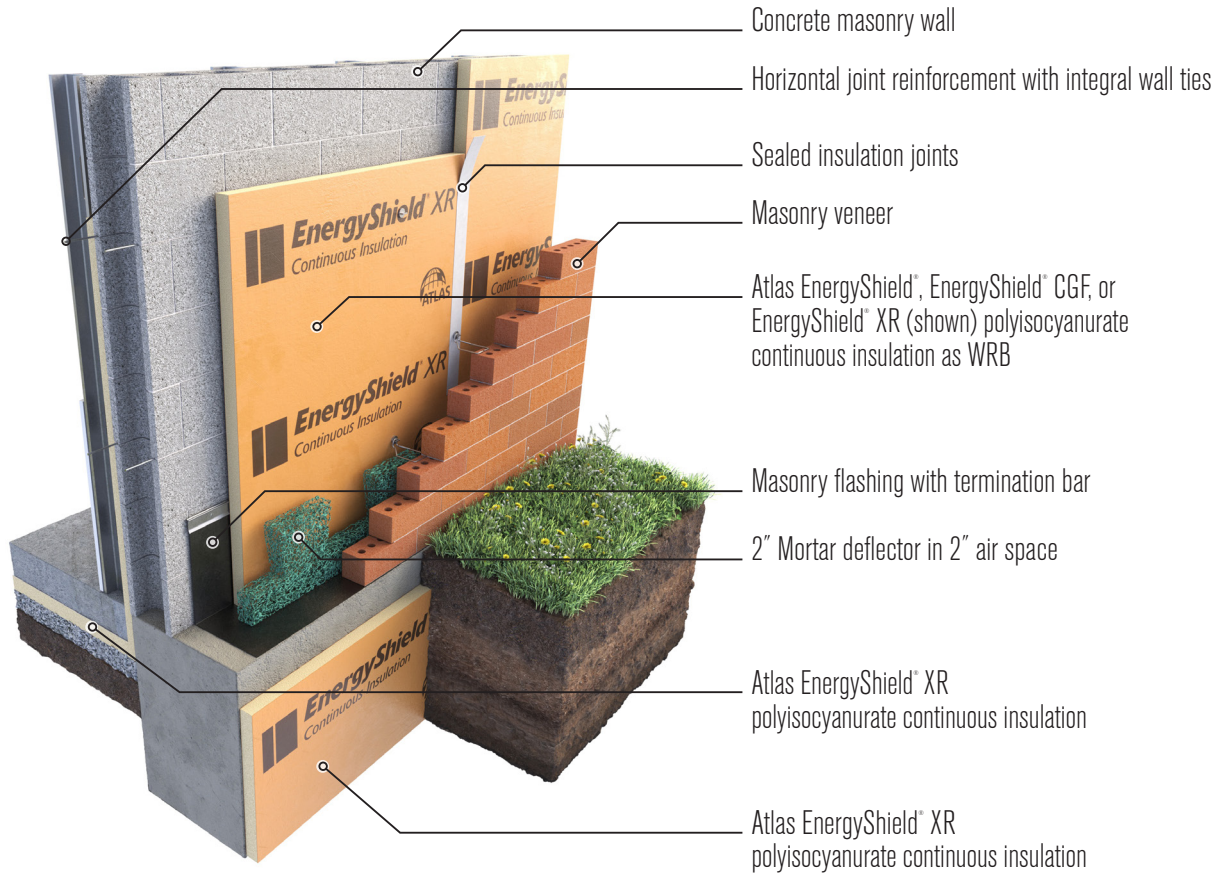
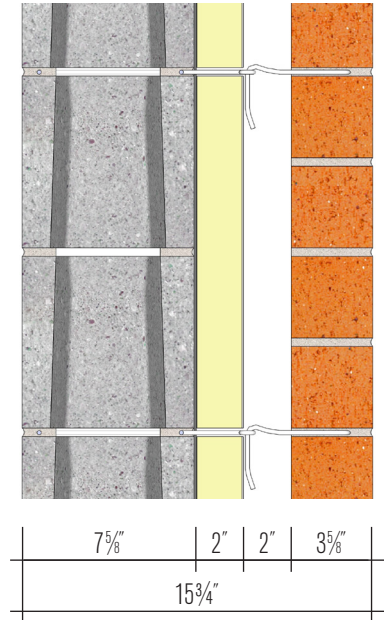
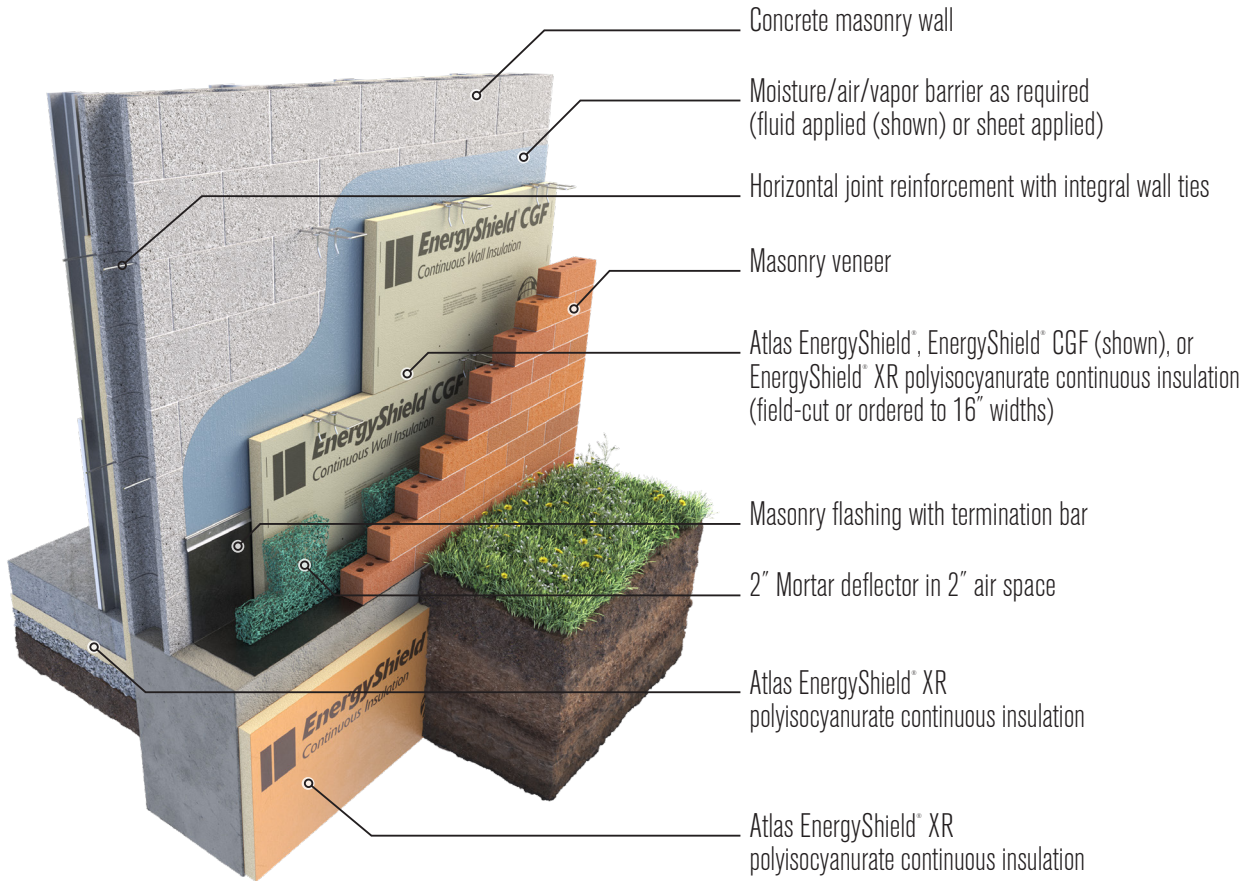


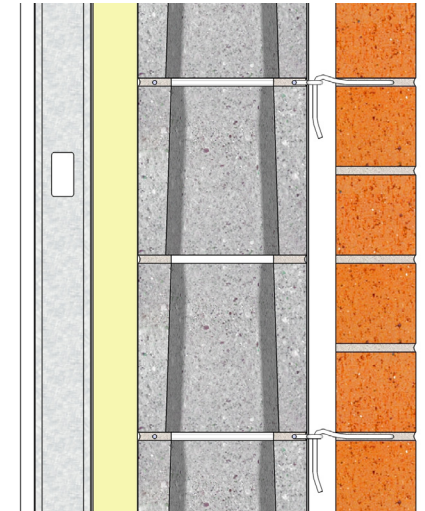
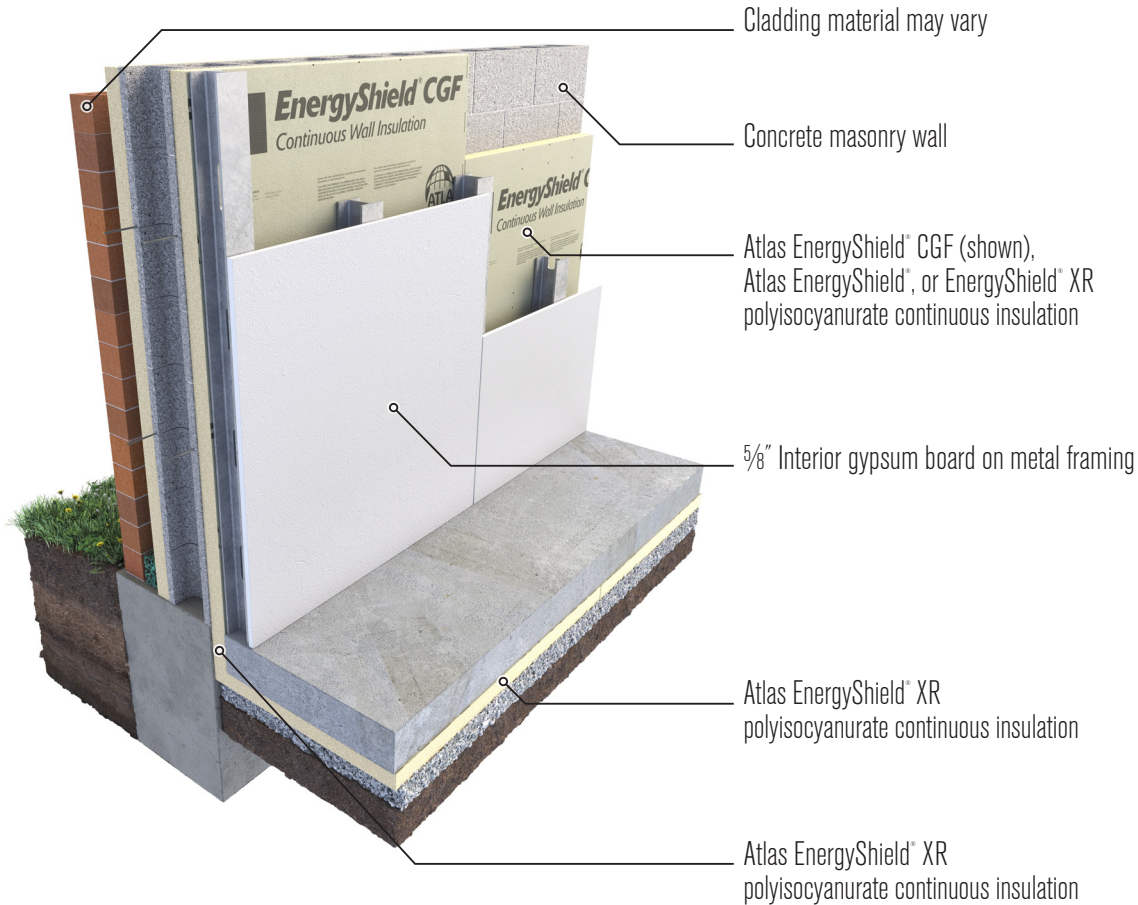
**Note:** Example illustrations are for reference only to graphically depict location of Atlas manufactured materials in relationship to other materials in a wall assembly. The images are not intended for construction documentation. A registered professional must review for accuracy and approve fitness for intended use. These images are the property of Atlas Roofing Corporation.



**Note:** Example illustrations are for reference only to graphically depict location of Atlas manufactured materials in relationship to other materials in a wall assembly. The images are not intended for construction documentation. A registered professional must review for accuracy and approve fitness for intended use. These images are the property of Atlas Roofing Corporation.



**Note:** Example illustrations are for reference only to graphically depict location of Atlas manufactured materials in relationship to other materials in a wall assembly. The images are not intended for construction documentation. A registered professional must review for accuracy and approve fitness for intended use. These images are the property of Atlas Roofing Corporation.



5/8"	2 1/2"	2"	7 5/8"	1"	3 5/8"
			17 3/8"		

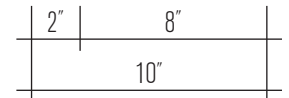
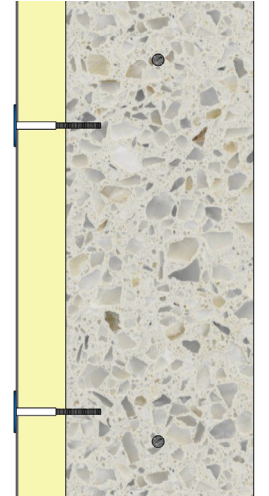
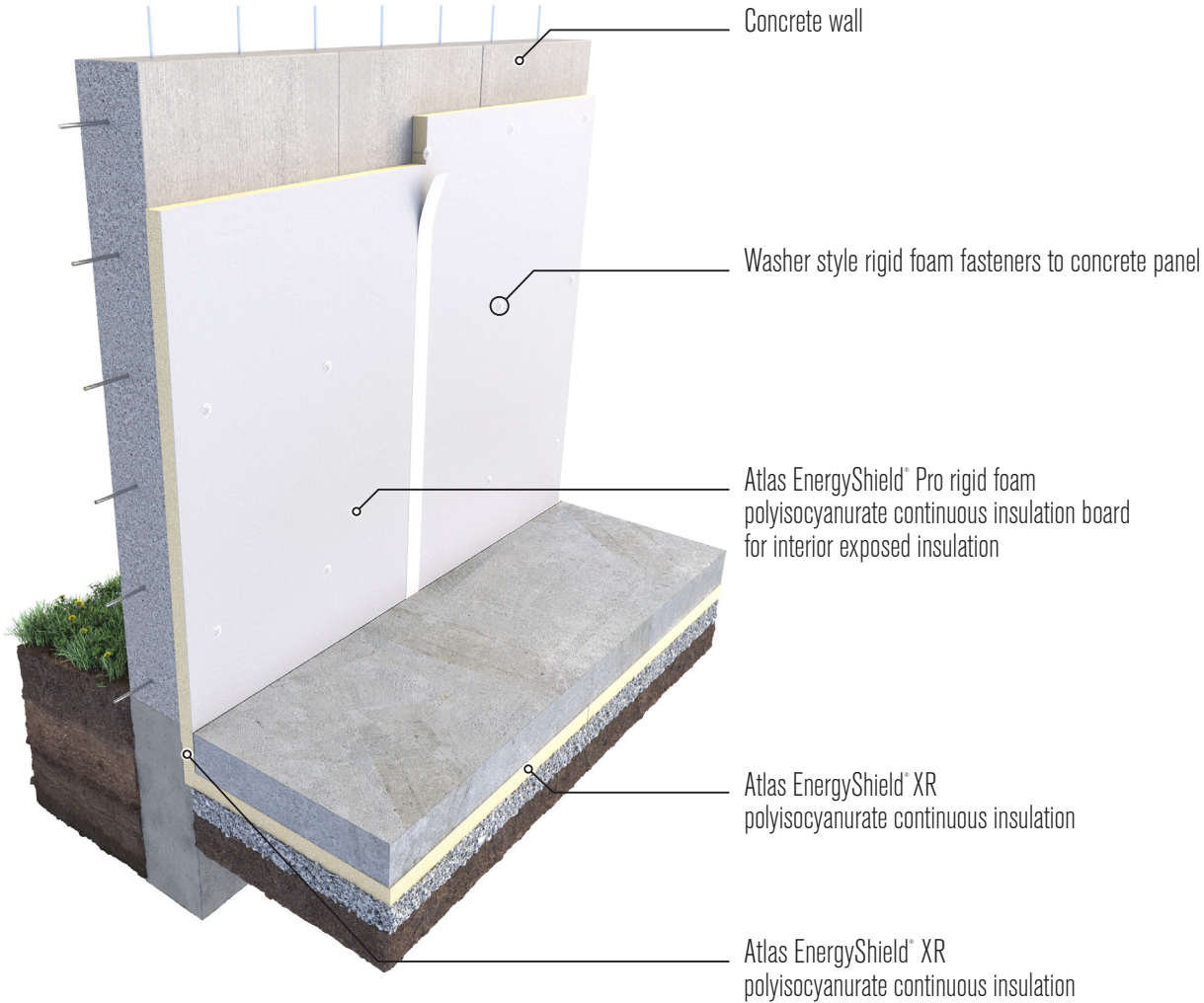
**Note:** Example illustrations are for reference only to graphically depict location of Atlas manufactured materials in relationship to other materials in a wall assembly. The images are not intended for construction documentation. A registered professional must review for accuracy and approve fitness for intended use. These images are the property of Atlas Roofing Corporation.

# CONCRETE WALL

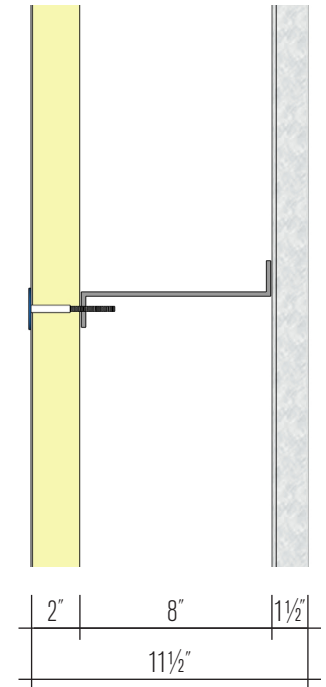
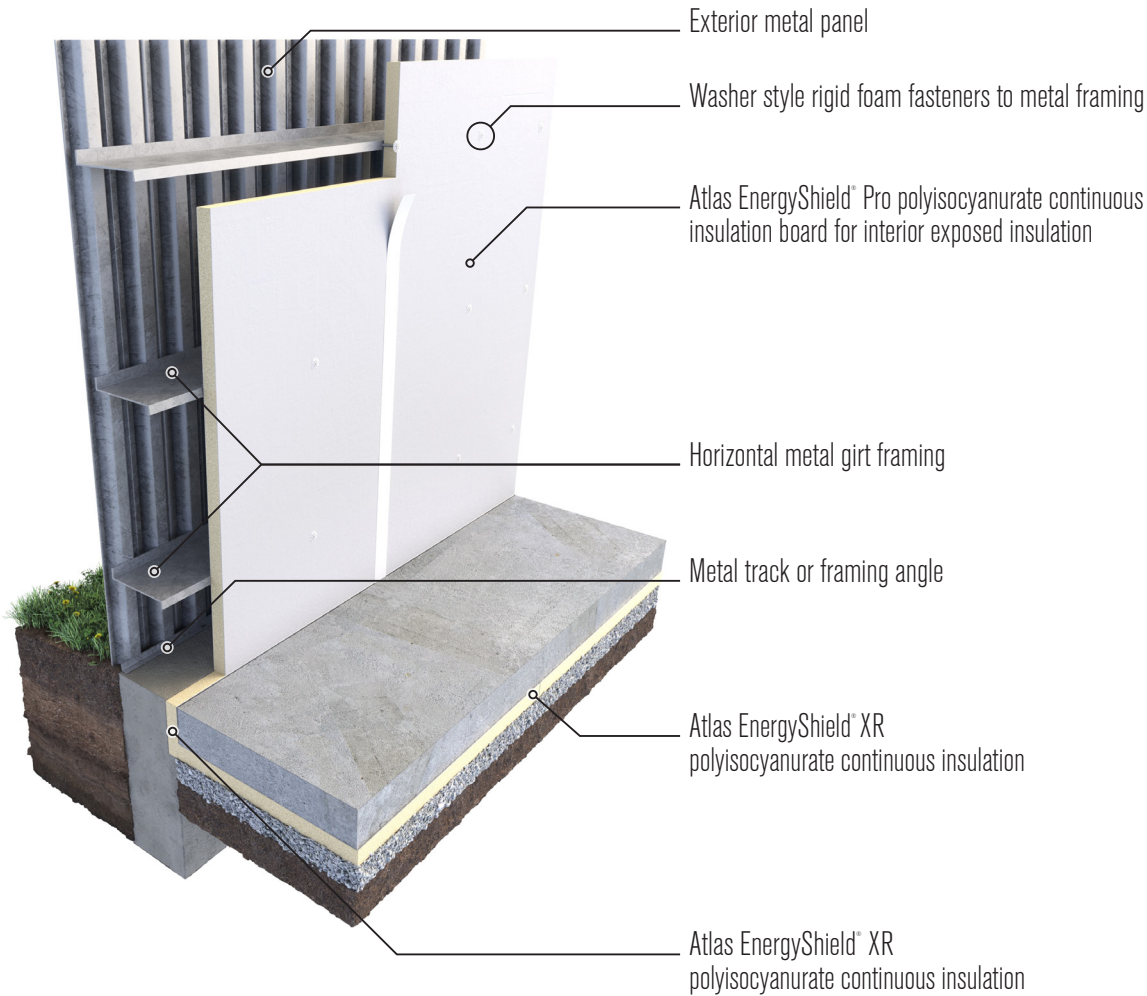
## Exposed Interior Wall

Illustration #06

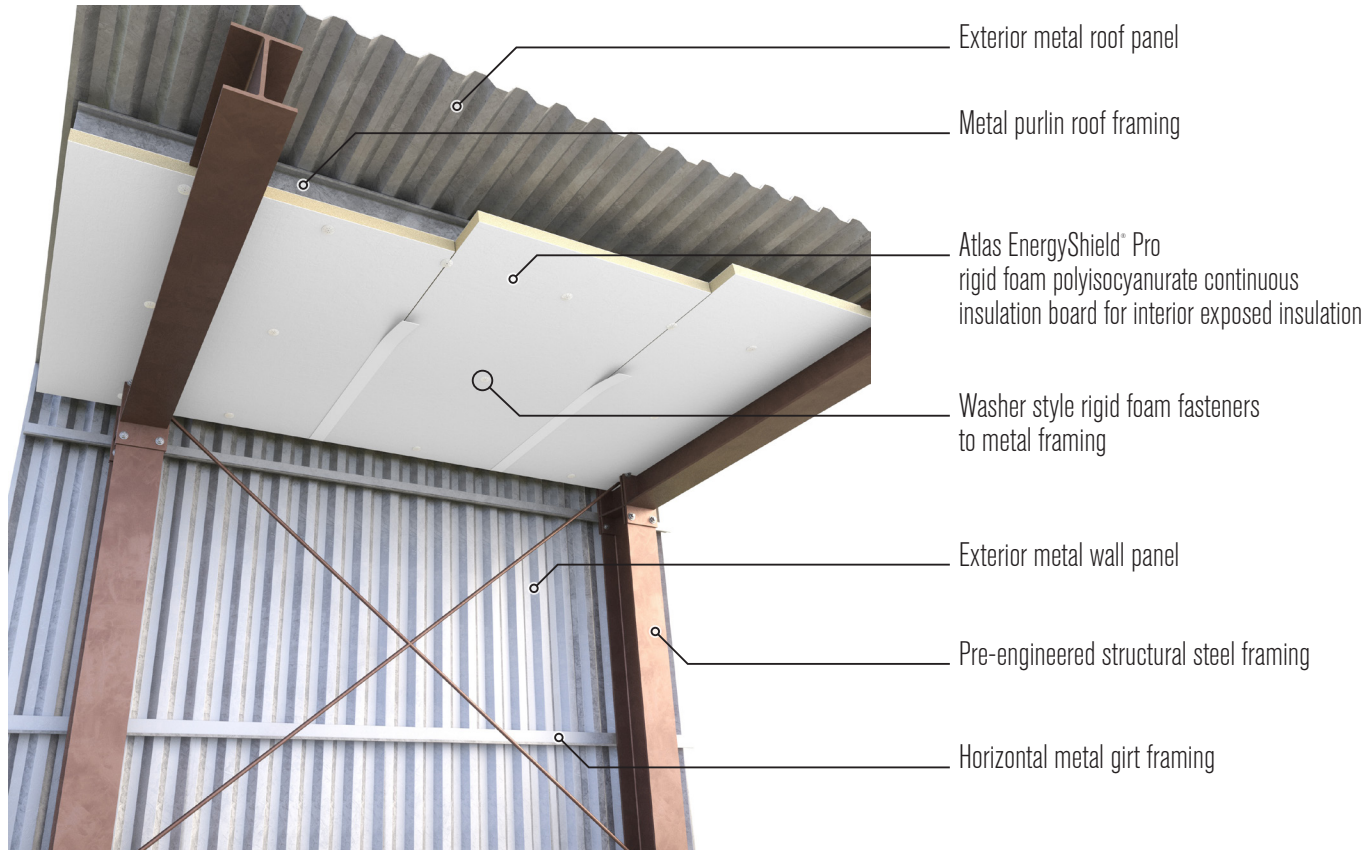
Revised: 6/26/25



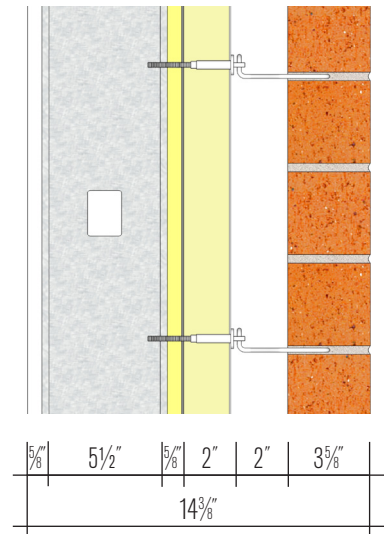
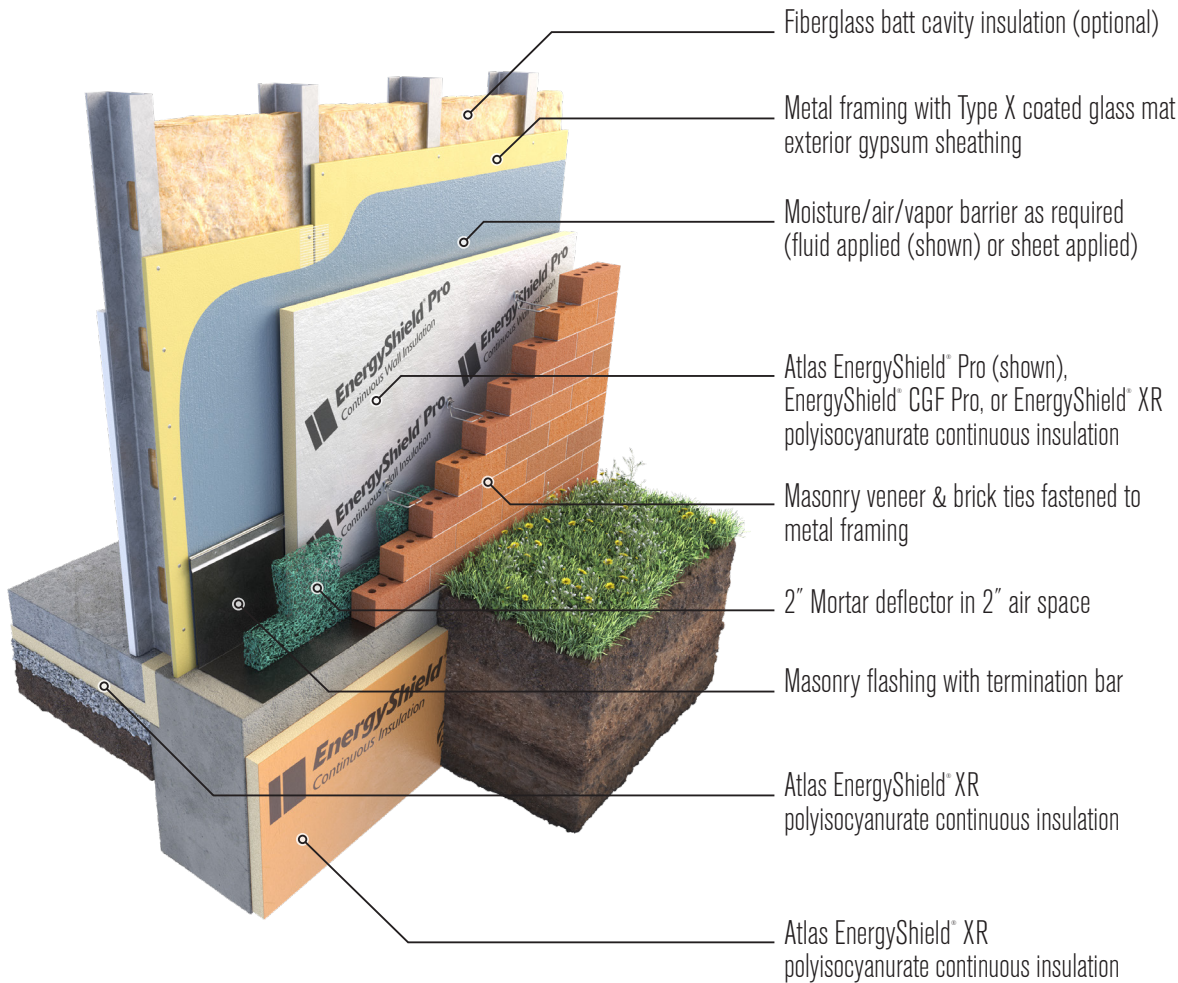
**Note:** Example illustrations are for reference only to graphically depict location of Atlas manufactured materials in relationship to other materials in a wall assembly. The images are not intended for construction documentation. A registered professional must review for accuracy and approve fitness for intended use. These images are the property of Atlas Roofing Corporation.



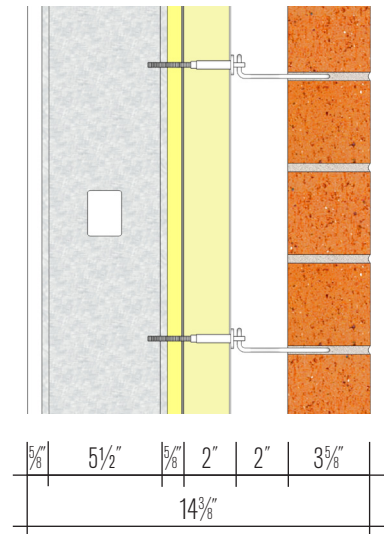
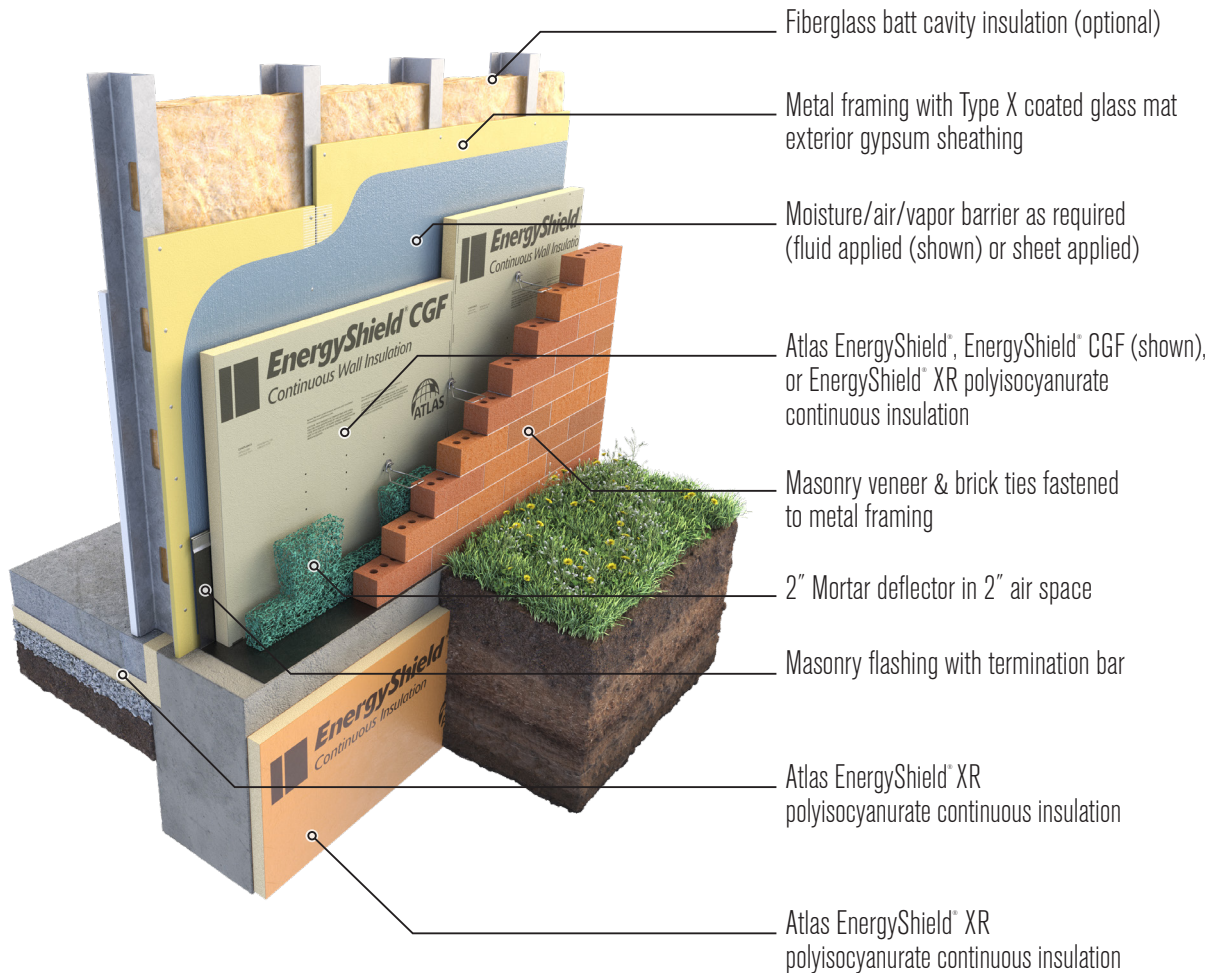
**Note:** Example illustrations are for reference only to graphically depict location of Atlas manufactured materials in relationship to other materials in a wall assembly. The images are not intended for construction documentation. A registered professional must review for accuracy and approve fitness for intended use. These images are the property of Atlas Roofing Corporation.



**Note:** Example illustrations are for reference only to graphically depict location of Atlas manufactured materials in relationship to other materials in a wall assembly. The images are not intended for construction documentation. A registered professional must review for accuracy and approve fitness for intended use. These images are the property of Atlas Roofing Corporation.



**Note:** Example illustrations are for reference only to graphically depict location of Atlas manufactured materials in relationship to other materials in a wall assembly. The images are not intended for construction documentation. A registered professional must review for accuracy and approve fitness for intended use. These images are the property of Atlas Roofing Corporation.



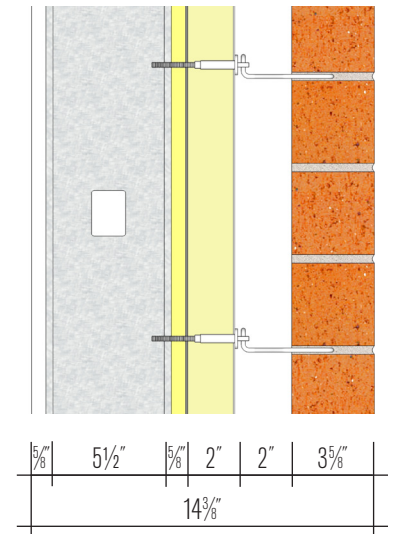
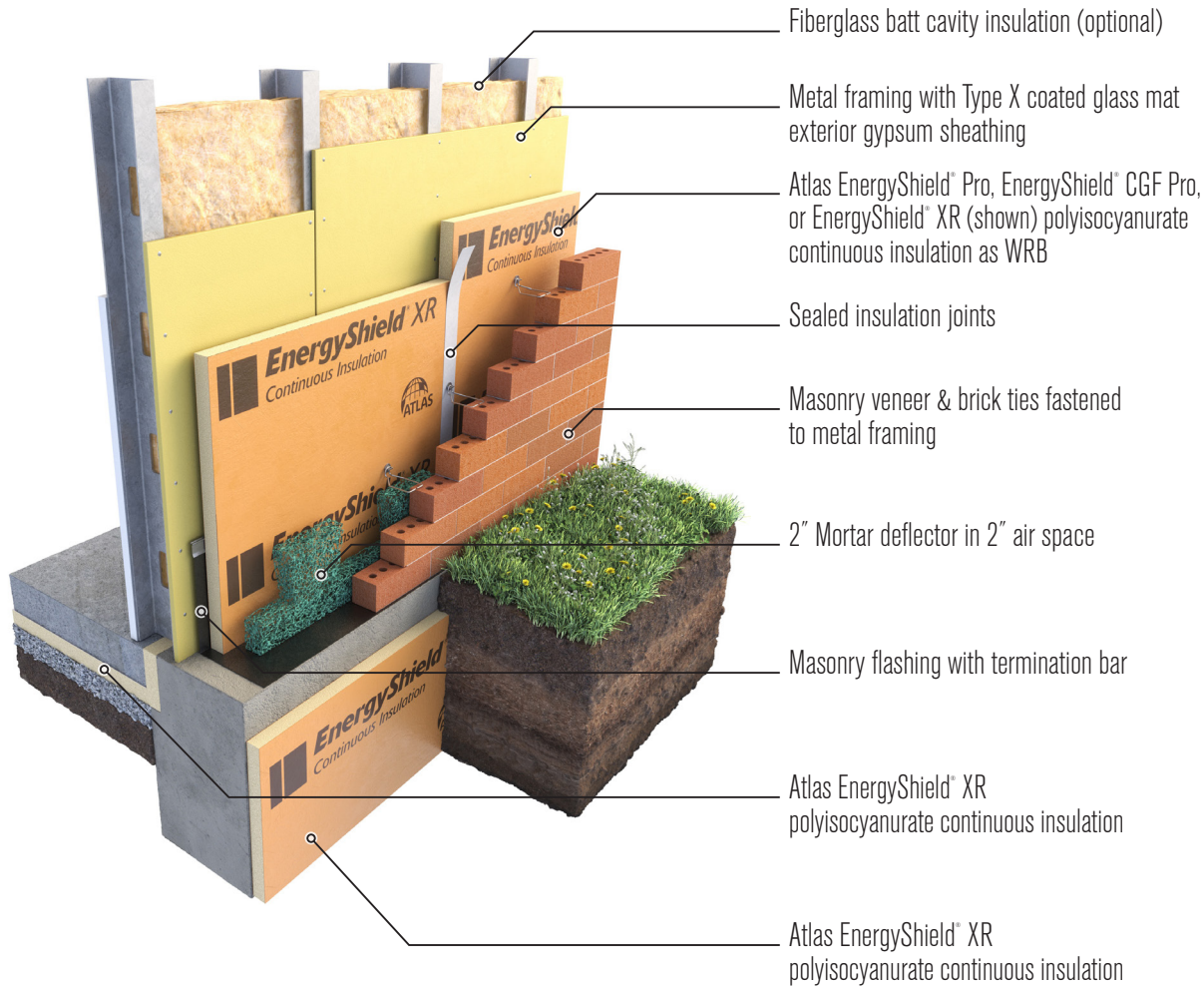
**Note:** Example illustrations are for reference only to graphically depict location of Atlas manufactured materials in relationship to other materials in a wall assembly. The images are not intended for construction documentation. A registered professional must review for accuracy and approve fitness for intended use. These images are the property of Atlas Roofing Corporation.

# METAL FRAME

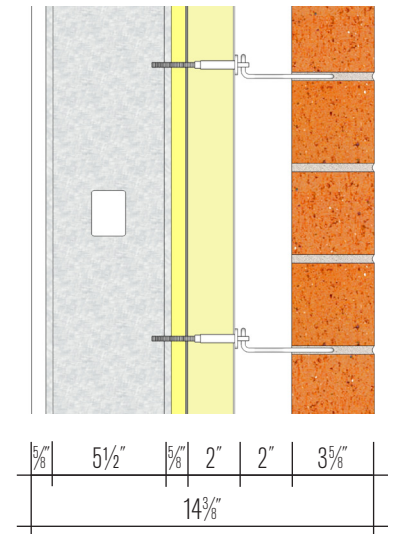
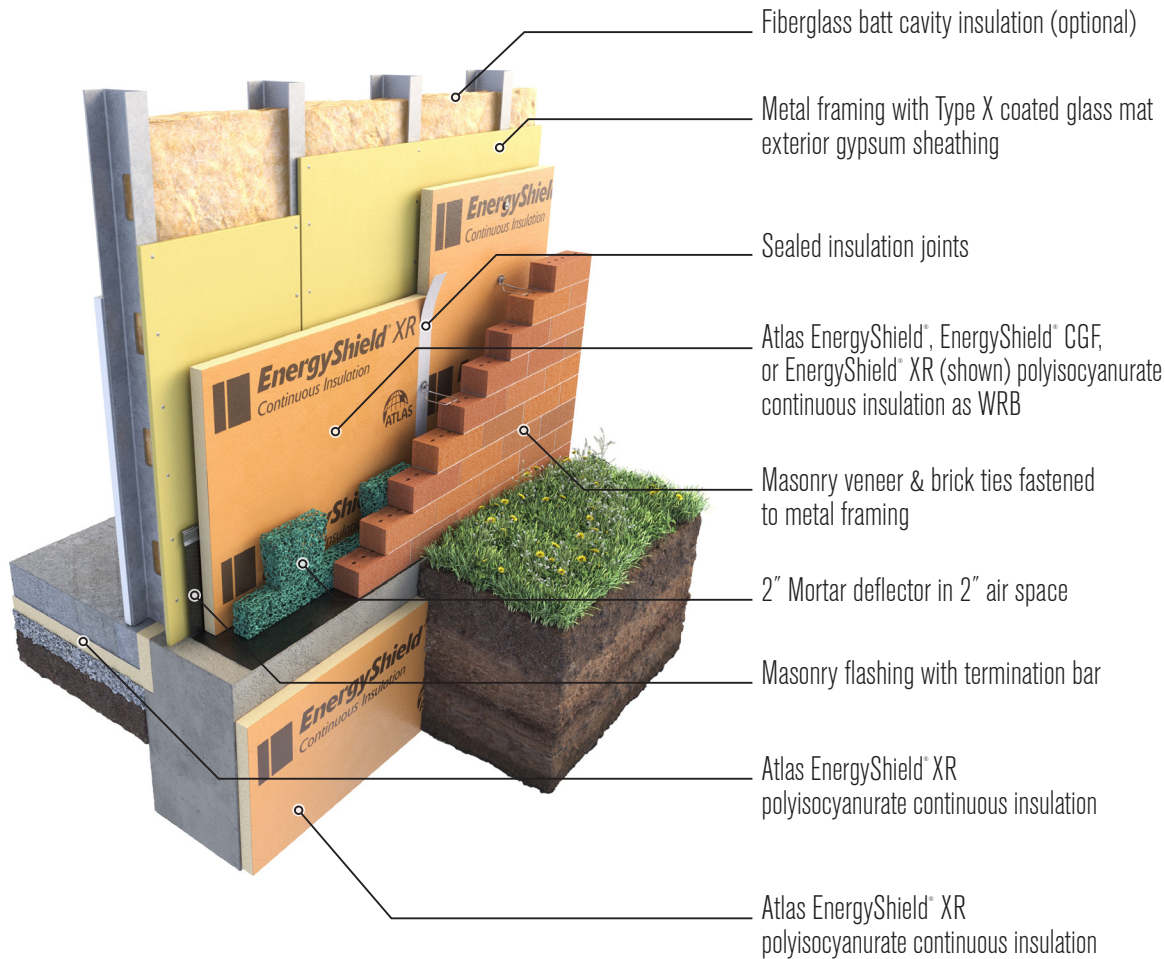
## Sheathing, Insulation as WRB, Masonry Veneer

Illustration #12

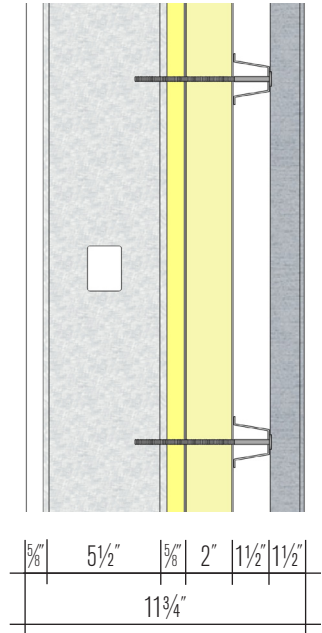
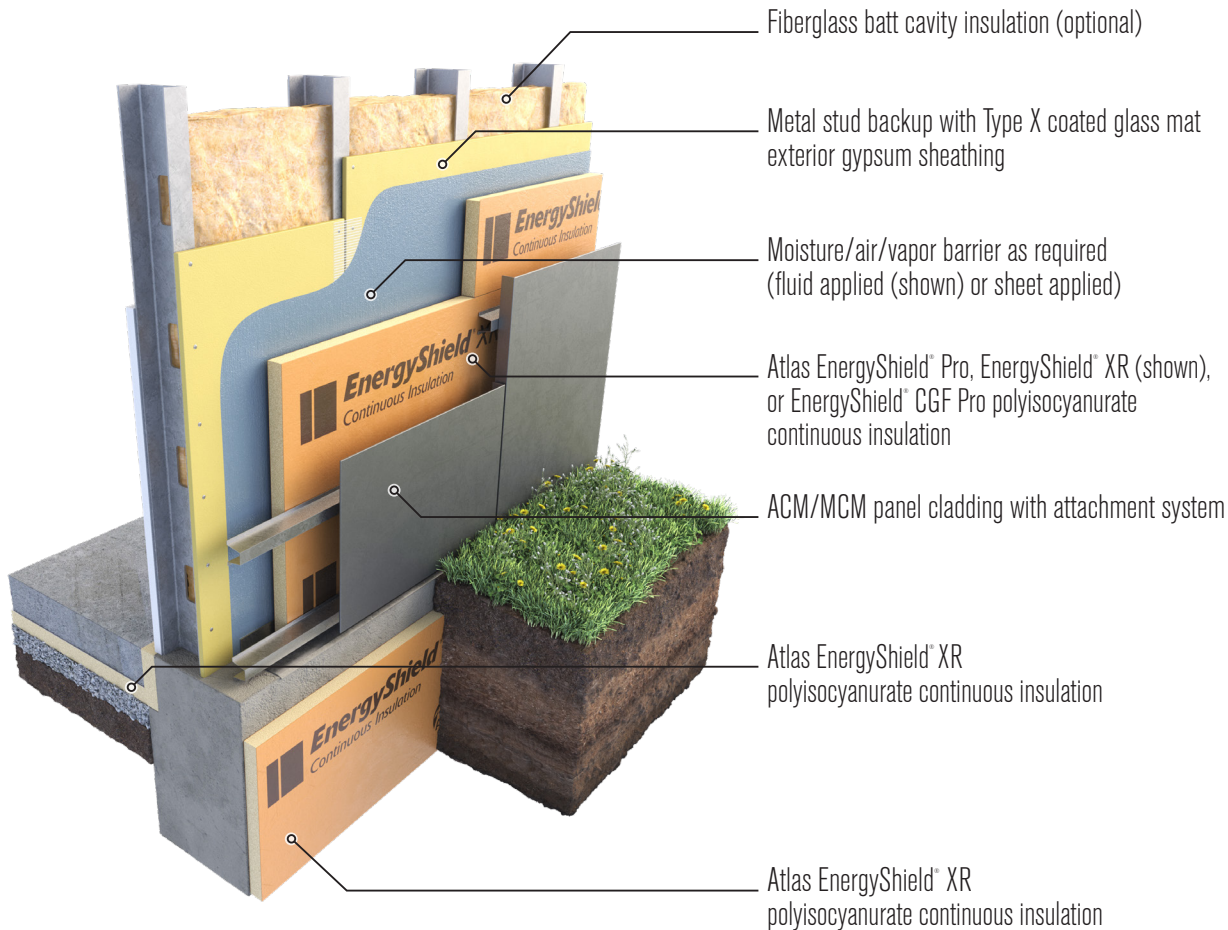
Revised: 6/20/25



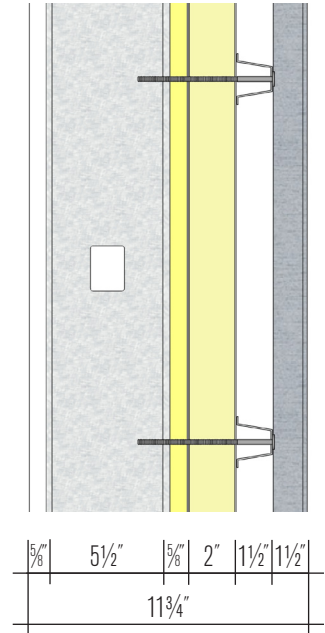
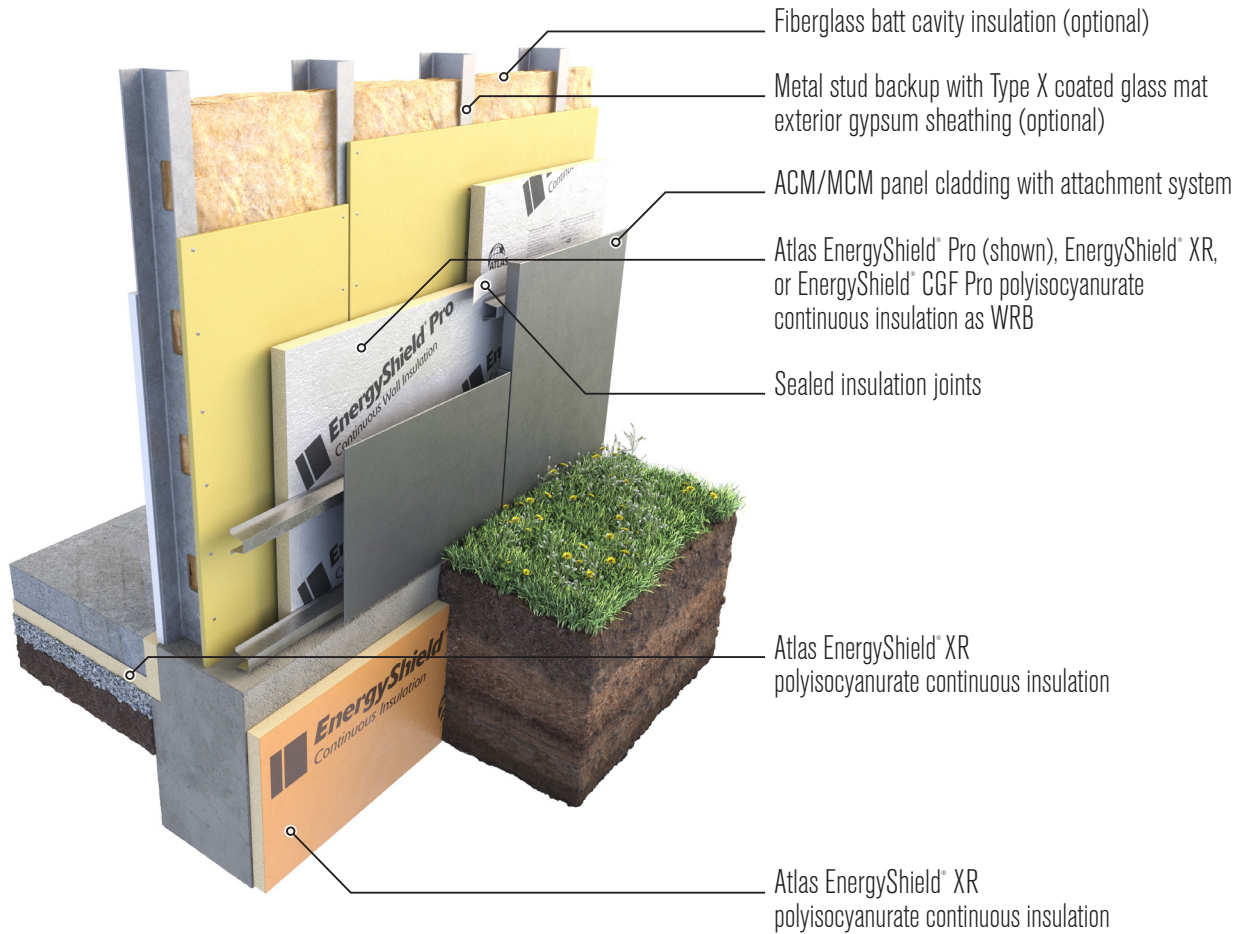
**Note:** Example illustrations are for reference only to graphically depict location of Atlas manufactured materials in relationship to other materials in a wall assembly. The images are not intended for construction documentation. A registered professional must review for accuracy and approve fitness for intended use. These images are the property of Atlas Roofing Corporation.



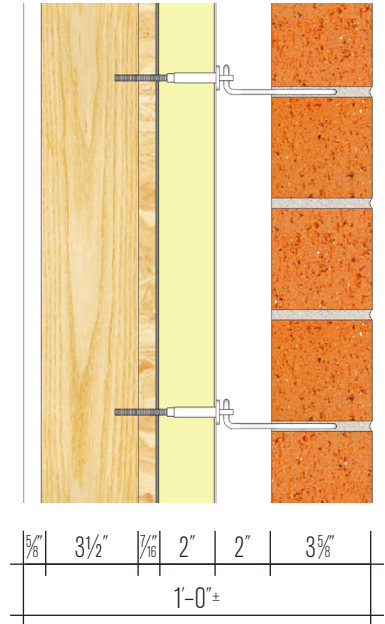
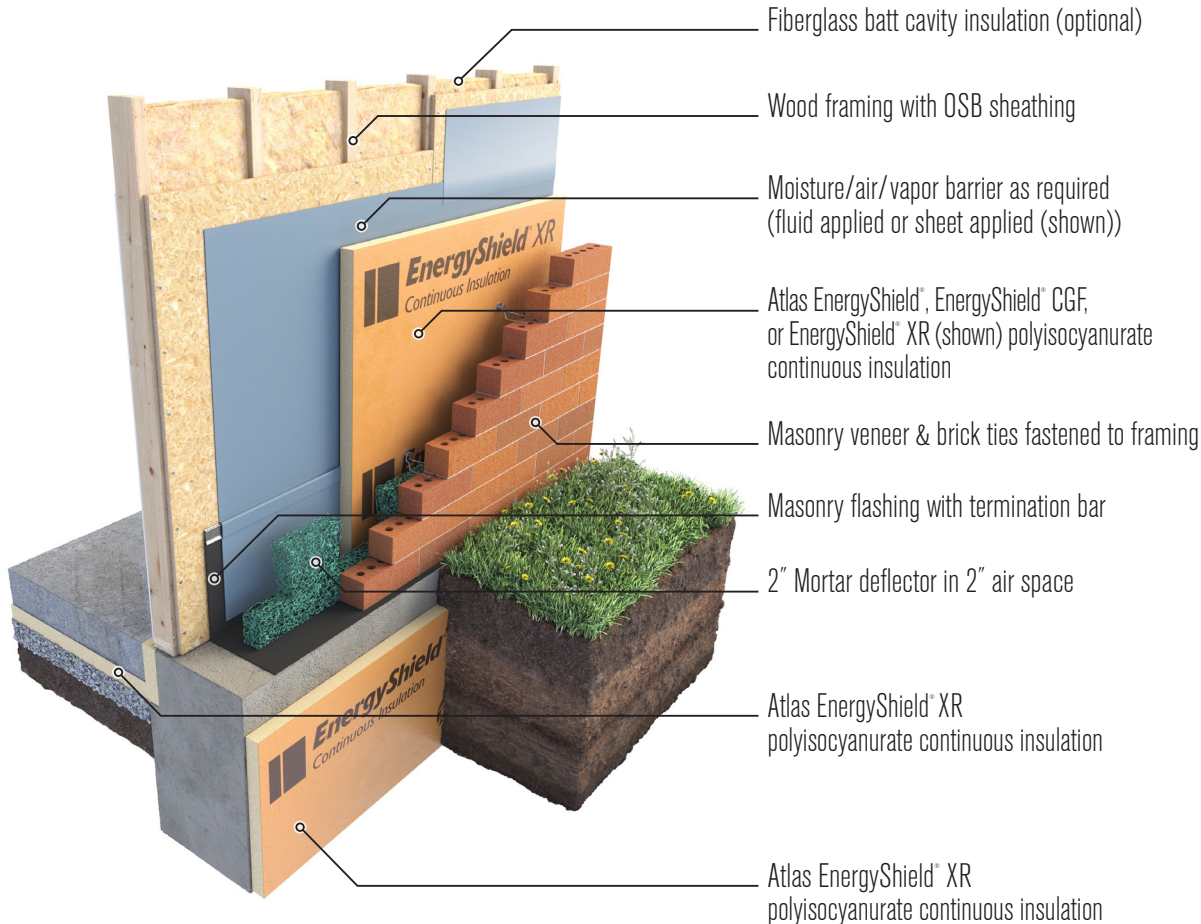
**Note:** Example illustrations are for reference only to graphically depict location of Atlas manufactured materials in relationship to other materials in a wall assembly. The images are not intended for construction documentation. A registered professional must review for accuracy and approve fitness for intended use. These images are the property of Atlas Roofing Corporation.



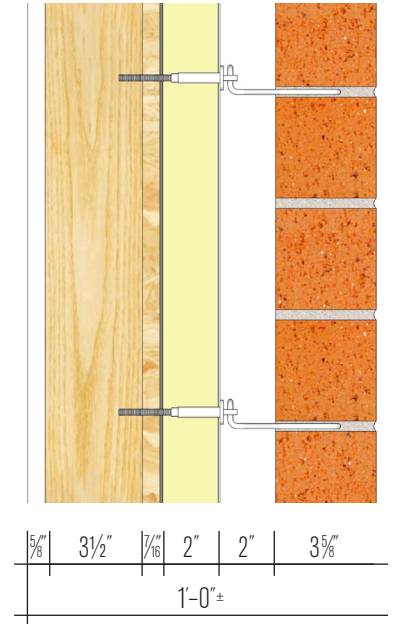
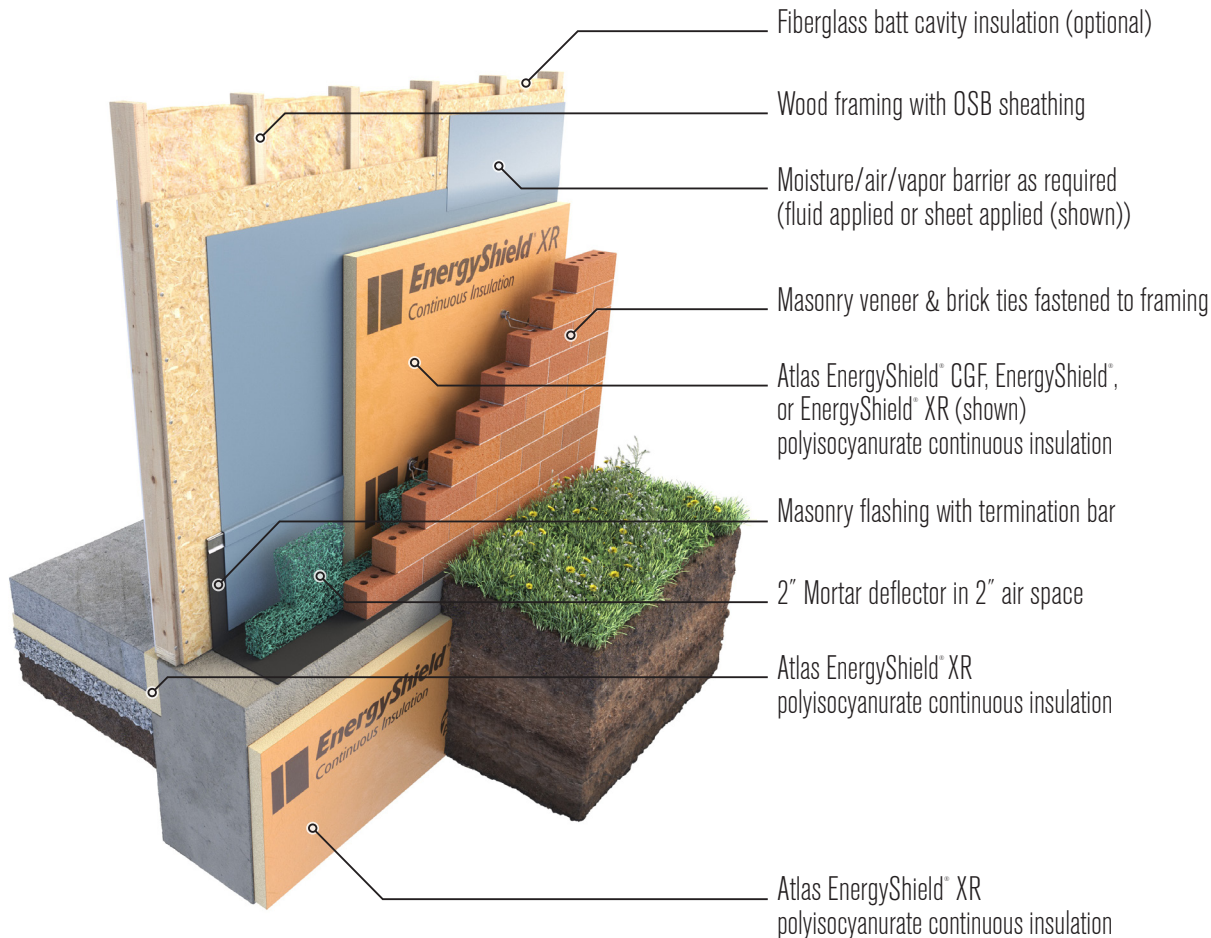
**Note:** Example illustrations are for reference only to graphically depict location of Atlas manufactured materials in relationship to other materials in a wall assembly. The images are not intended for construction documentation. A registered professional must review for accuracy and approve fitness for intended use. These images are the property of Atlas Roofing Corporation.



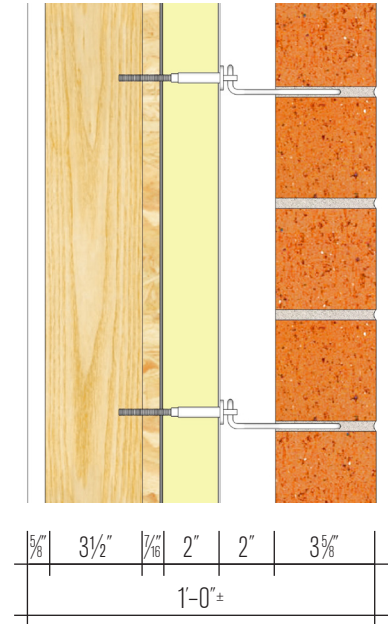
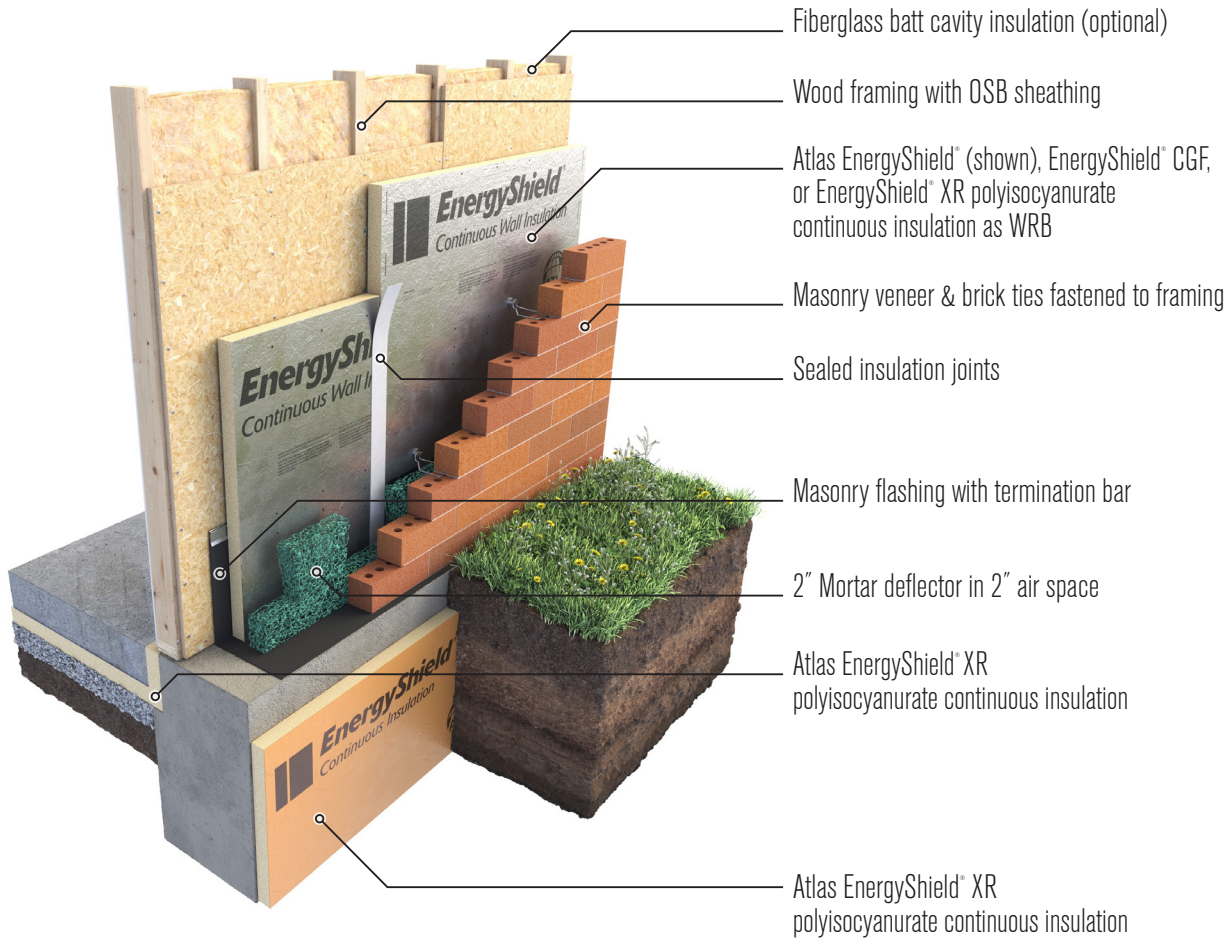
**Note:** Example illustrations are for reference only to graphically depict location of Atlas manufactured materials in relationship to other materials in a wall assembly. The images are not intended for construction documentation. A registered professional must review for accuracy and approve fitness for intended use. These images are the property of Atlas Roofing Corporation.



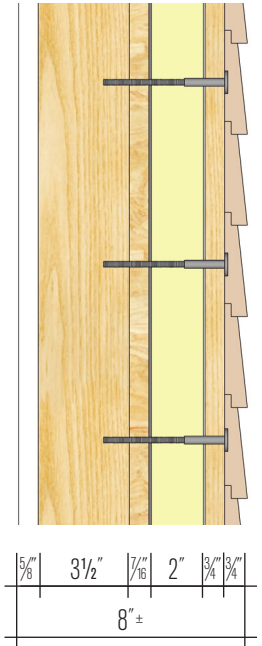
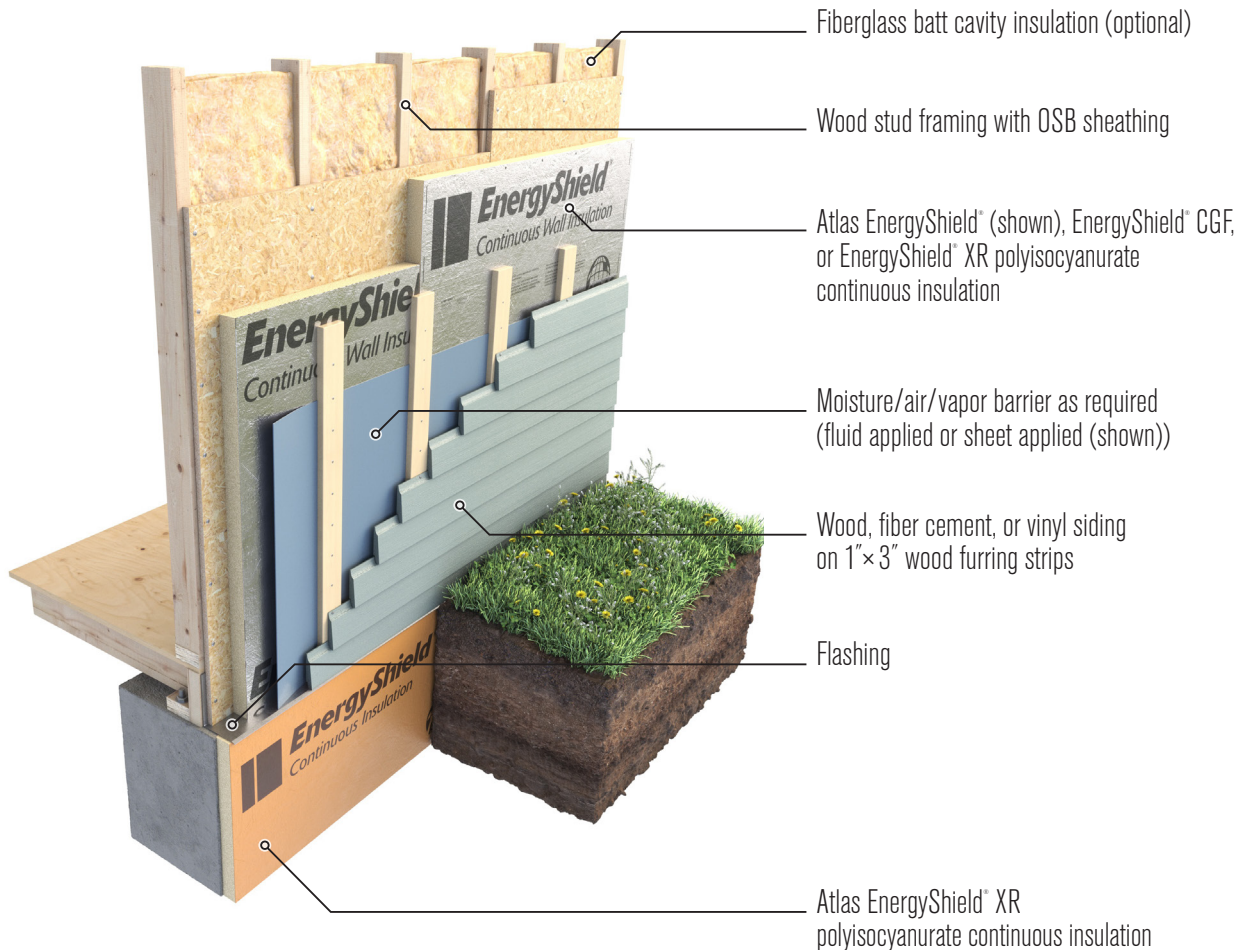
**Note:** Example illustrations are for reference only to graphically depict location of Atlas manufactured materials in relationship to other materials in a wall assembly. The images are not intended for construction documentation. A registered professional must review for accuracy and approve fitness for intended use. These images are the property of Atlas Roofing Corporation.



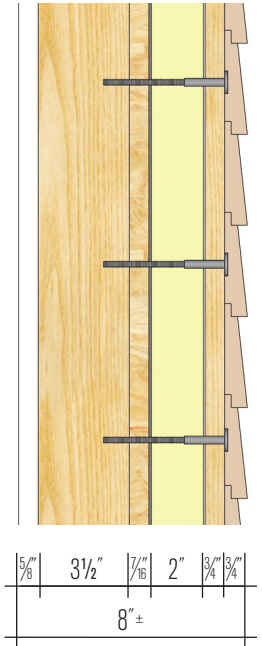
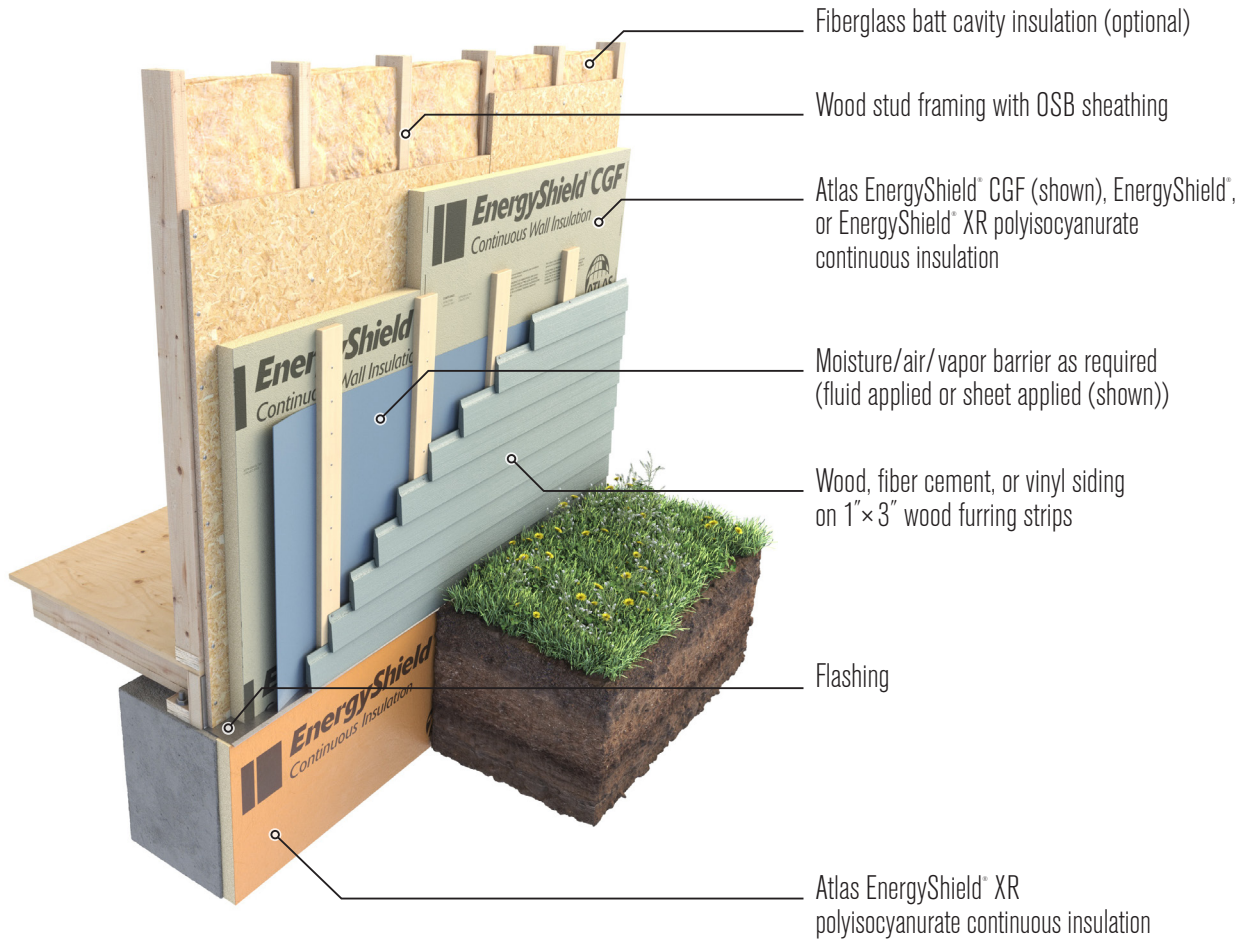
**Note:** Example illustrations are for reference only to graphically depict location of Atlas manufactured materials in relationship to other materials in a wall assembly. The images are not intended for construction documentation. A registered professional must review for accuracy and approve fitness for intended use. These images are the property of Atlas Roofing Corporation.



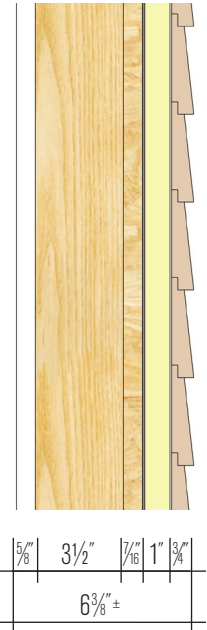
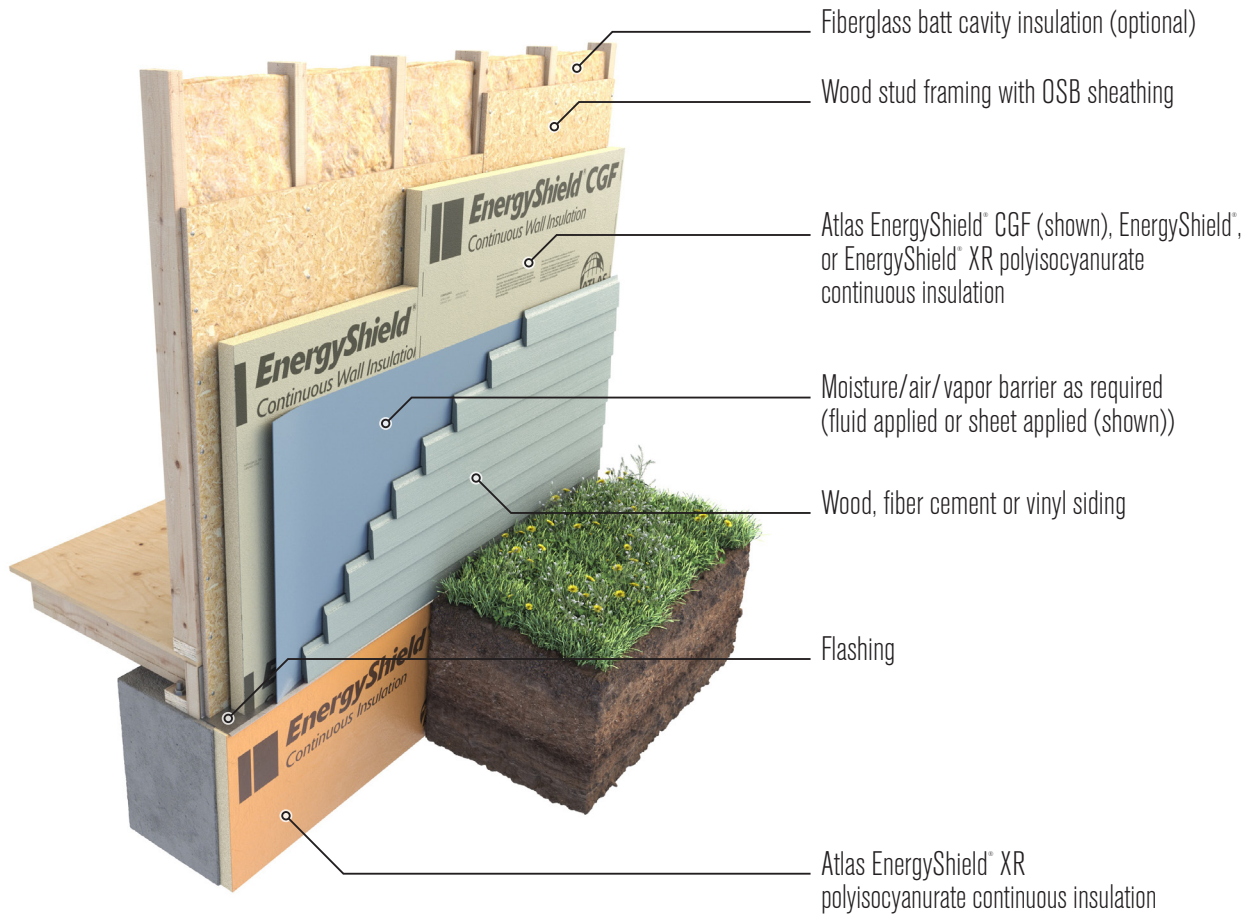
**Note:** Example illustrations are for reference only to graphically depict location of Atlas manufactured materials in relationship to other materials in a wall assembly. The images are not intended for construction documentation. A registered professional must review for accuracy and approve fitness for intended use. These images are the property of Atlas Roofing Corporation.



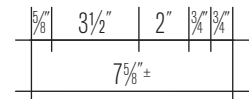
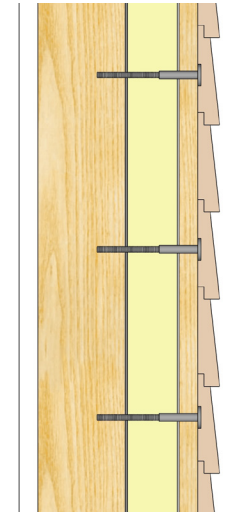
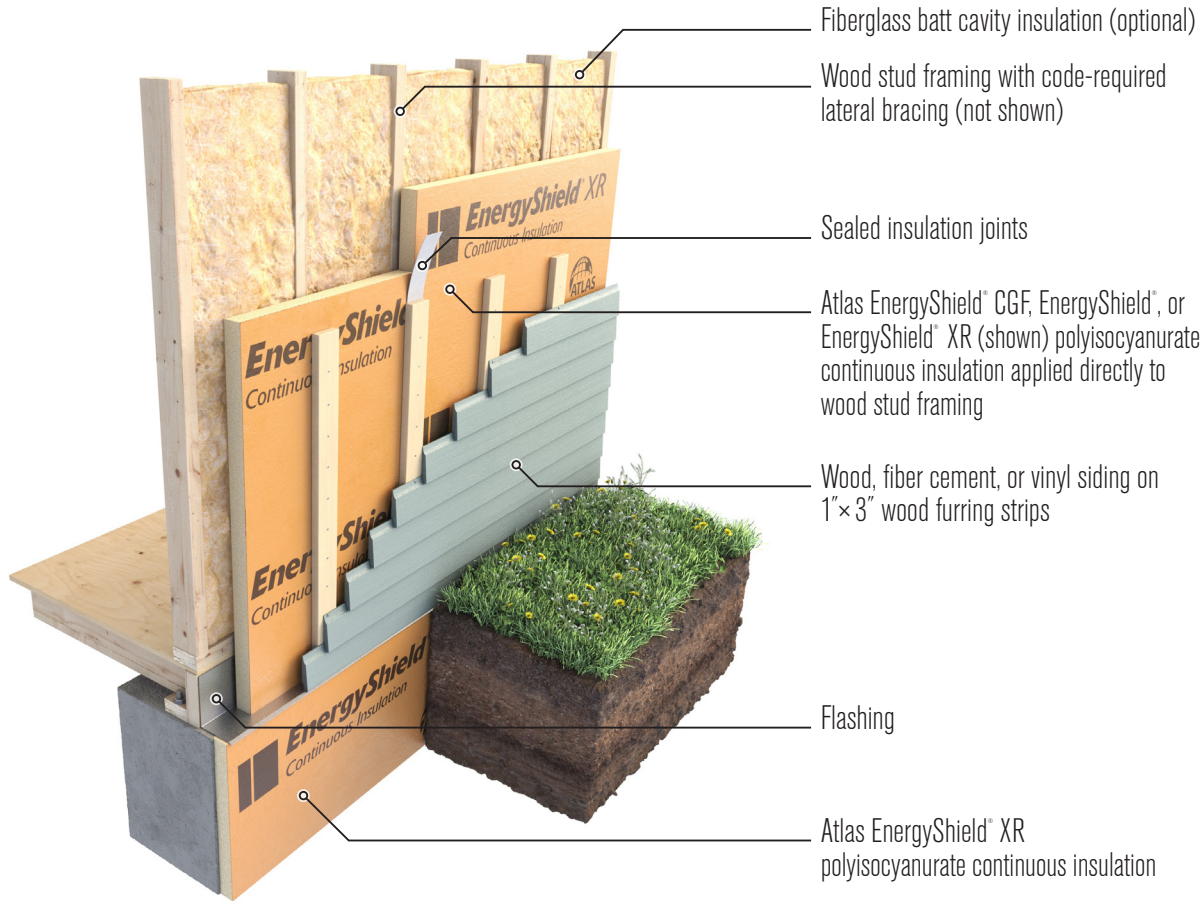
**Note:** Example illustrations are for reference only to graphically depict location of Atlas manufactured materials in relationship to other materials in a wall assembly. The images are not intended for construction documentation. A registered professional must review for accuracy and approve fitness for intended use. These images are the property of Atlas Roofing Corporation.



**Note:** Example illustrations are for reference only to graphically depict location of Atlas manufactured materials in relationship to other materials in a wall assembly. The images are not intended for construction documentation. A registered professional must review for accuracy and approve fitness for intended use. These images are the property of Atlas Roofing Corporation.

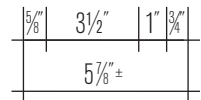
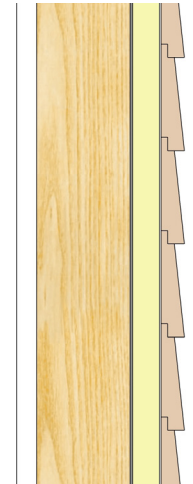
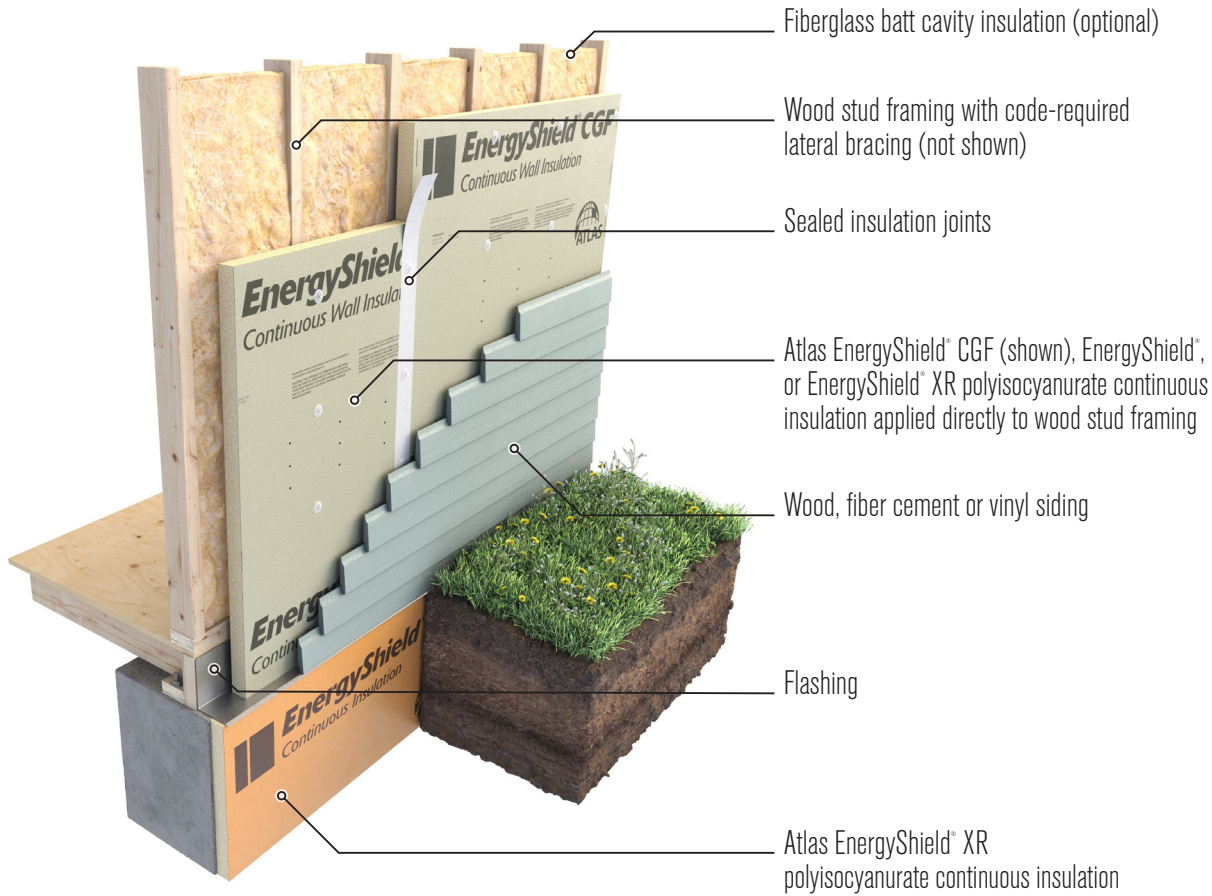


**Note:** Example illustrations are for reference only to graphically depict location of Atlas manufactured materials in relationship to other materials in a wall assembly. The images are not intended for construction documentation. A registered professional must review for accuracy and approve fitness for intended use. These images are the property of Atlas Roofing Corporation.



**Note:** Approved lateral bracing methods such as 1"× 4" wood let-in-bracing, metal strap cross bracing, inset shear panels and structural sheathing at corners and at regular intervals must be used when polyiso foam is applied directly to wood stud framing. Consult architect, engineer, local code and code official for most appropriate solution.

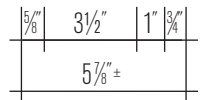
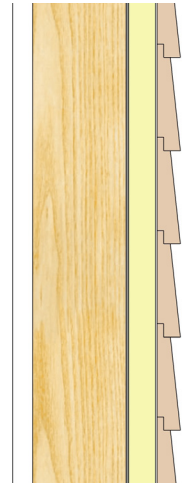
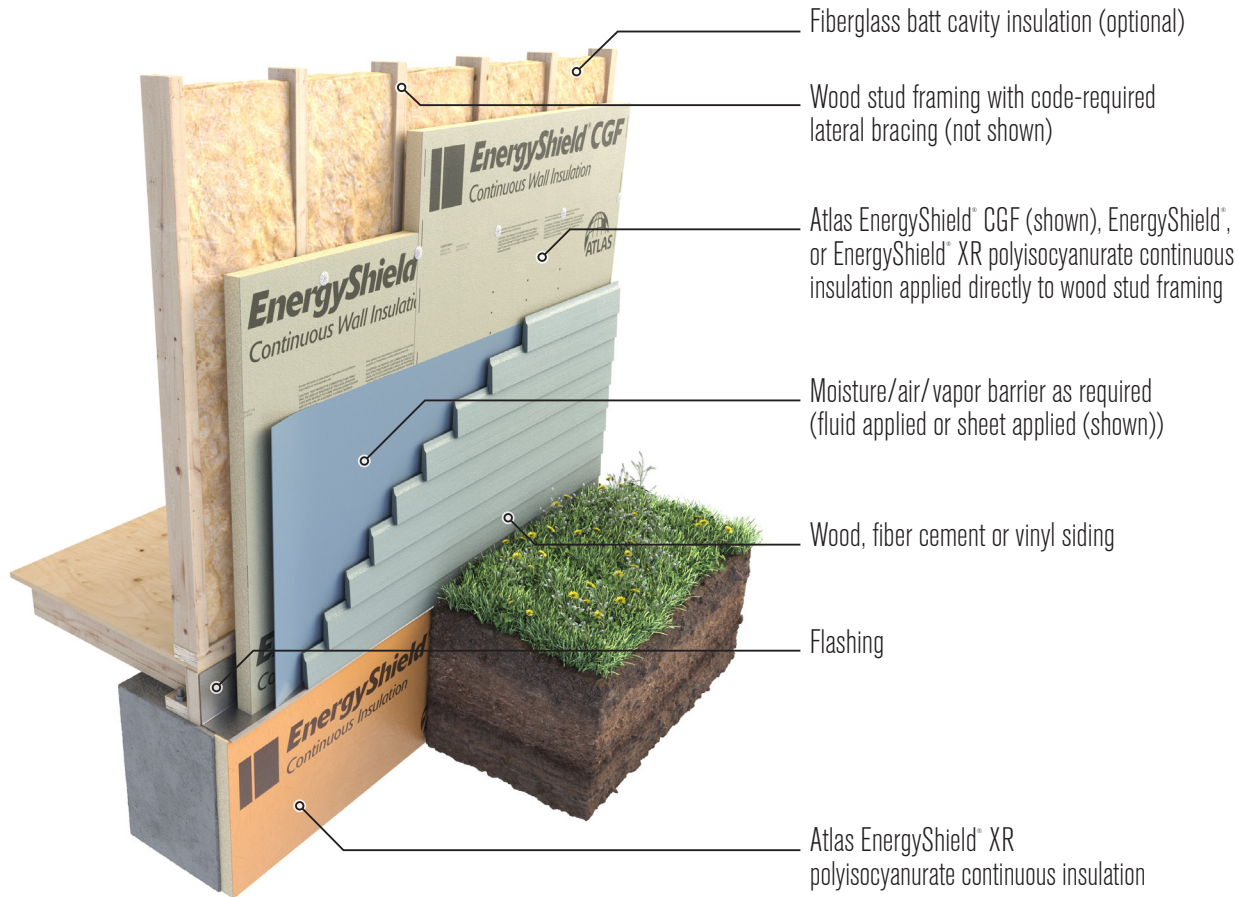
**Note:** Example illustrations are for reference only to graphically depict location of Atlas manufactured materials in relationship to other materials in a wall assembly. The images are not intended for construction documentation. A registered professional must review for accuracy and approve fitness for intended use. These images are the property of Atlas Roofing Corporation.



**Note:** Approved lateral bracing methods such as 1" × 4" wood let-in-bracing, metal strap cross bracing, inset shear panels and structural sheathing at corners and at regular intervals must be used when polyiso foam is applied directly to wood stud framing. Consult architect, engineer, local code and code official for most appropriate solution.

**Note:** Example illustrations are for reference only to graphically depict location of Atlas manufactured materials in relationship to other materials in a wall assembly. The images are not intended for construction documentation. A registered professional must review for accuracy and approve fitness for intended use. These images are the property of Atlas Roofing Corporation.

Revised: 6/20/25



**Note:** Approved lateral bracing methods such as 1" x 4" wood let-in-bracing, metal strap cross bracing, inset shear panels and structural sheathing at corners and at regular intervals must be used when polyiso foam is applied directly to wood stud framing. Consult architect, engineer, local code and code official for most appropriate solution.

**Note:** Example illustrations are for reference only to graphically depict location of Atlas manufactured materials in relationship to other materials in a wall assembly. The images are not intended for construction documentation. A registered professional must review for accuracy and approve fitness for intended use. These images are the property of Atlas Roofing Corporation.