

Bil-Guard[®]

Hatch Railing System

MAGNETIC GATE LATCH INSTALLATION INSTRUCTIONS

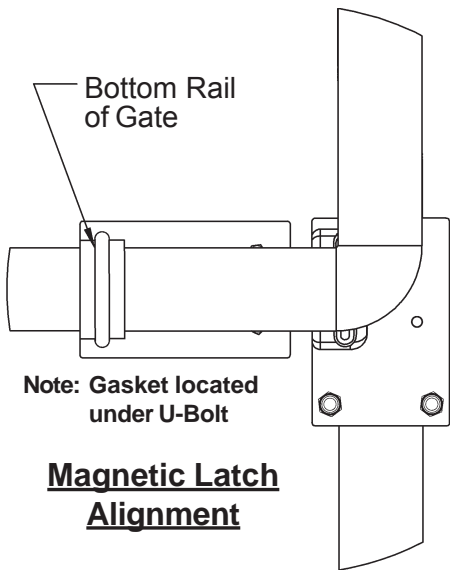
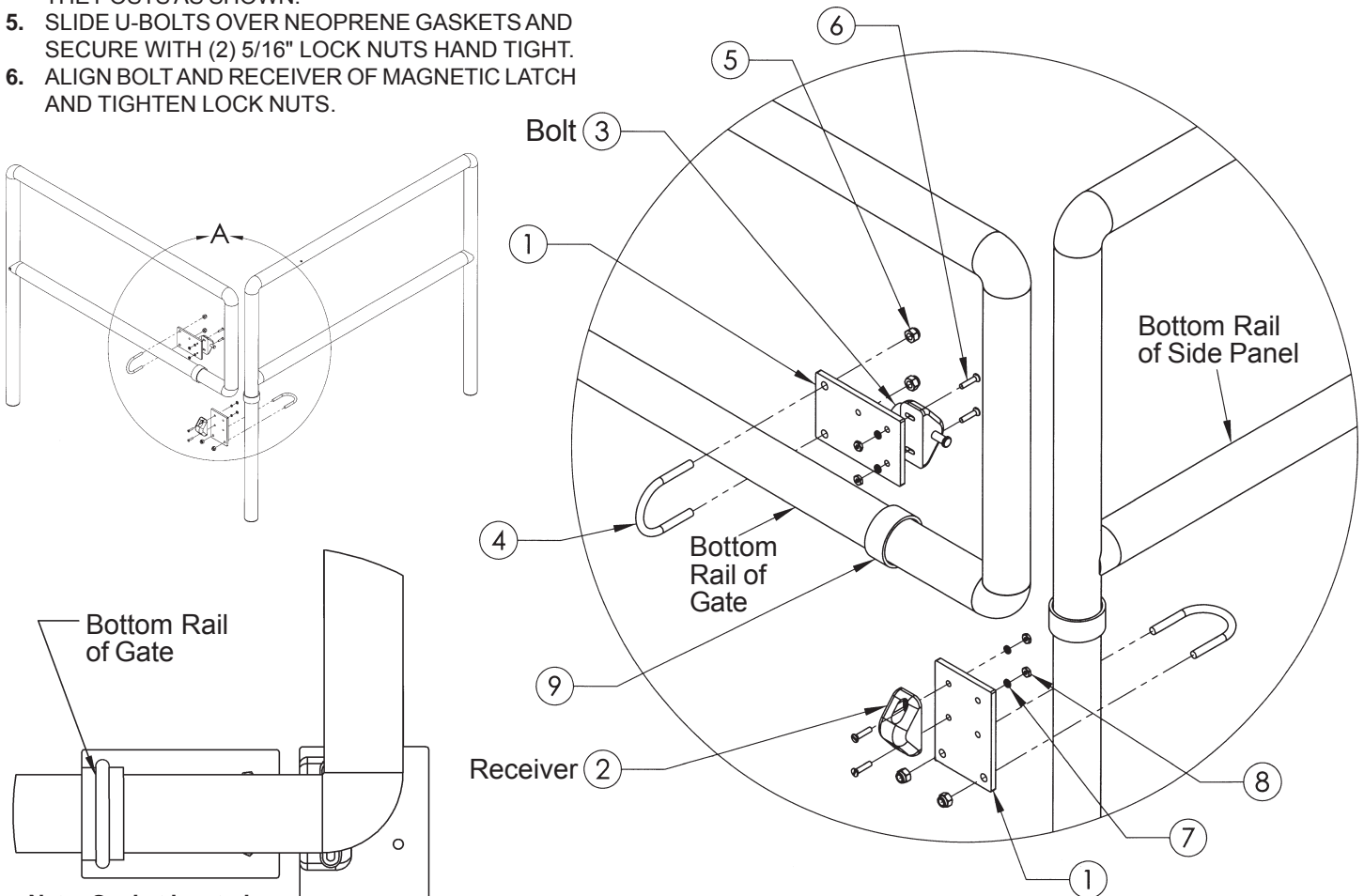
TOOLS REQUIRED:

3/8" WRENCH OR SOCKET, 1/2" WRENCH OR SOCKET, FLAT HEAD SCREWDRIVER, TAPE MEASURE, WRITING UTENSIL, SAFETY GLASSES AND WORK GLOVES.

FOR INSTALLATION:

1. MOUNT BOLT SIDE OF MAGNETIC LATCH TO PLATE WITH (2) SCREWS, LOCK WASHERS AND HEX NUTS AND TIGHTEN.
2. MOUNT RECEIVER SIDE OF MAGNETIC LATCH TO PLATE WITH (2) SCREWS, LOCK WASHERS AND HEX NUTS AND TIGHTEN.
3. LOCATE POSITION OF MAGNETIC LATCH ON GATE AND SIDE RAIL AND MARK LOCATION WITH WRITING UTENSIL.
4. AFFIX THE (2) 1/8" X 1" X 6" LONG NEOPRENE GASKETS TO THE RAILS AS SHOWN BY PEELING AWAY THE PROTECTIVE BACKING AND WRAPPING AROUND THE POSTS AS SHOWN.
5. SLIDE U-BOLTS OVER NEOPRENE GASKETS AND SECURE WITH (2) 5/16" LOCK NUTS HAND TIGHT.
6. ALIGN BOLT AND RECEIVER OF MAGNETIC LATCH AND TIGHTEN LOCK NUTS.

ITEM NO.	DESCRIPTION	QTY.
1	Plate -Latch 4" X 3 1/8" X 1/4" Alum.	2
2	Latch-Receiver	1
3	Latch-Bolt	1
4	U-Bolt 5/16"-18 X 1", 2" O.D. Zinc Plated	2
5	Nut - Nylon Insert 5/16"-18 316 S.S.	4
6	Screw-Flathead #10-24 X 7/8" S.S.	4
7	Washer-Split Lock #10 18-8 S.S.	4
8	Nut-Hex #10-24 S.S.	4
9	Gasket - Neoprene 1/8" X 1"X6"	2



DETAIL A



The Bilco Company, P.O. Box 1203,
 New Haven, CT 06505
 Phone: (203)934-6363 www.bilco.com