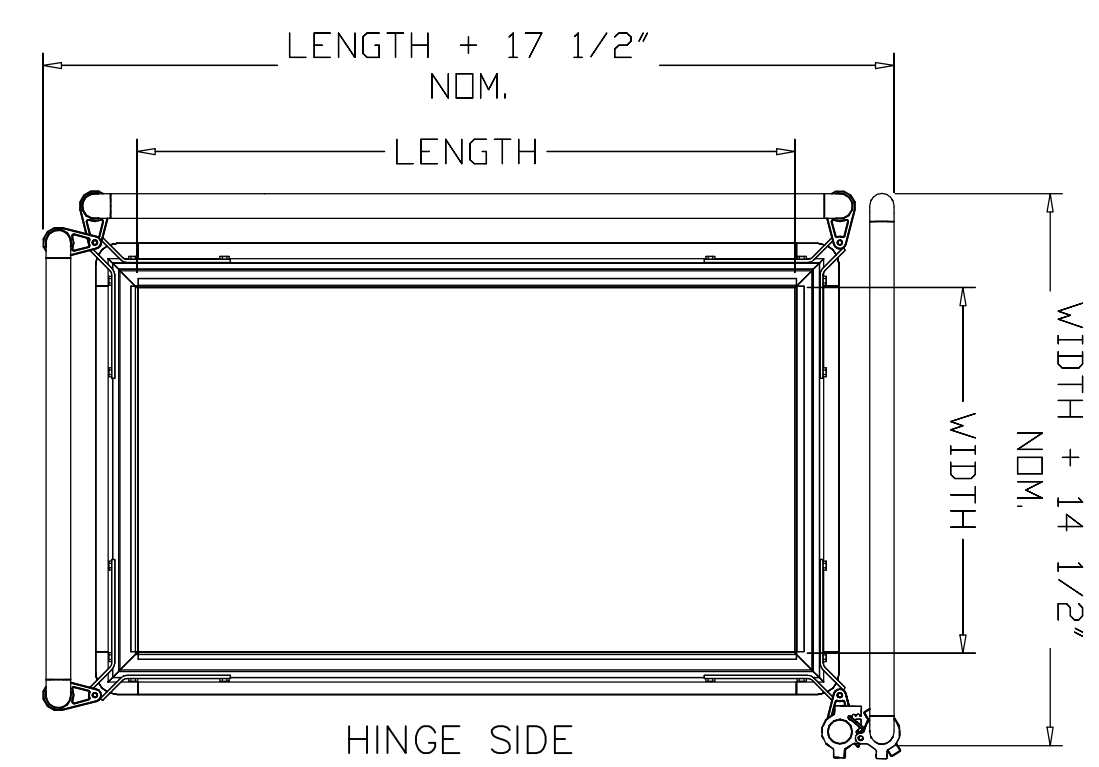
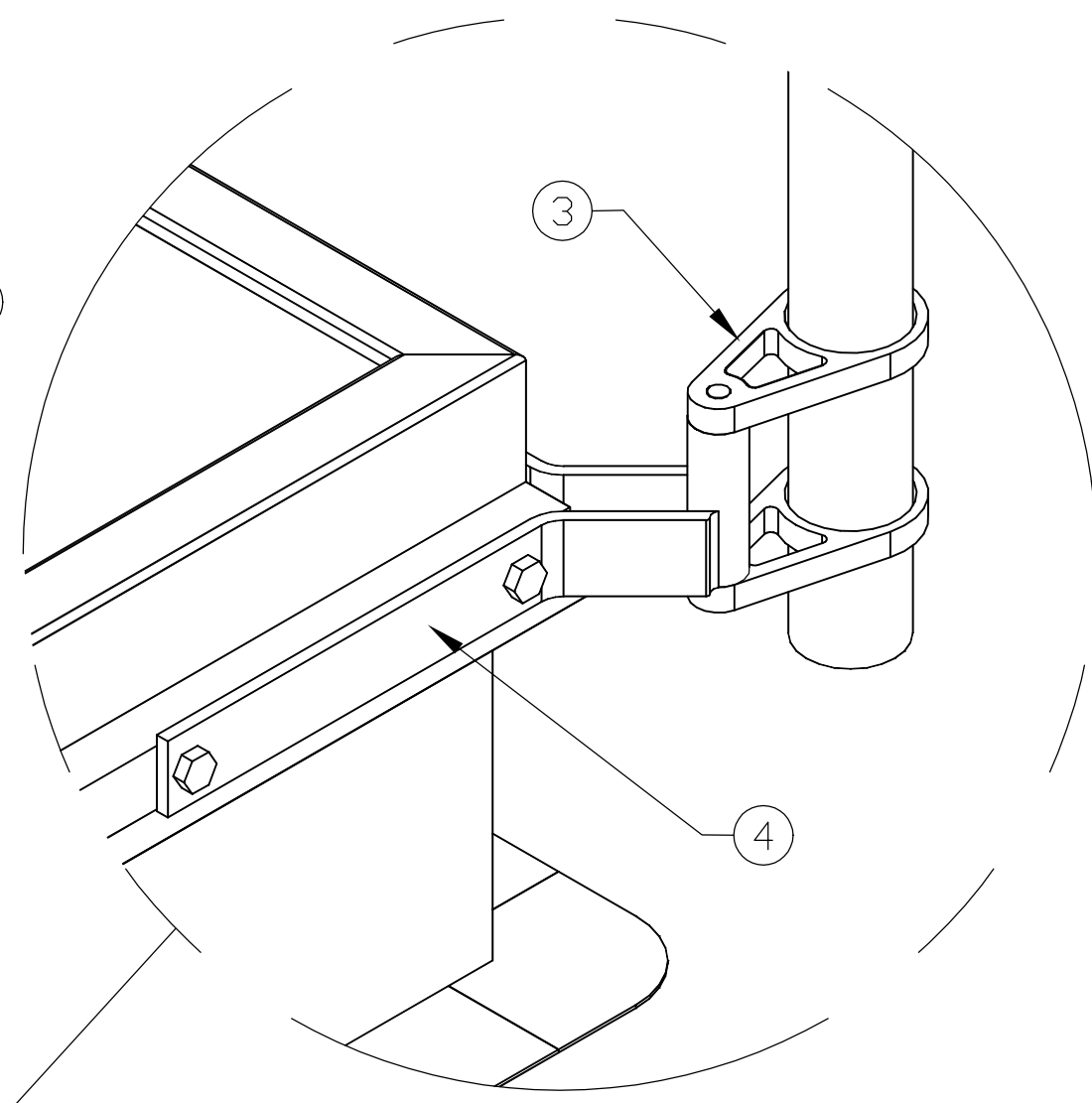


ISOMETRIC
VIEW

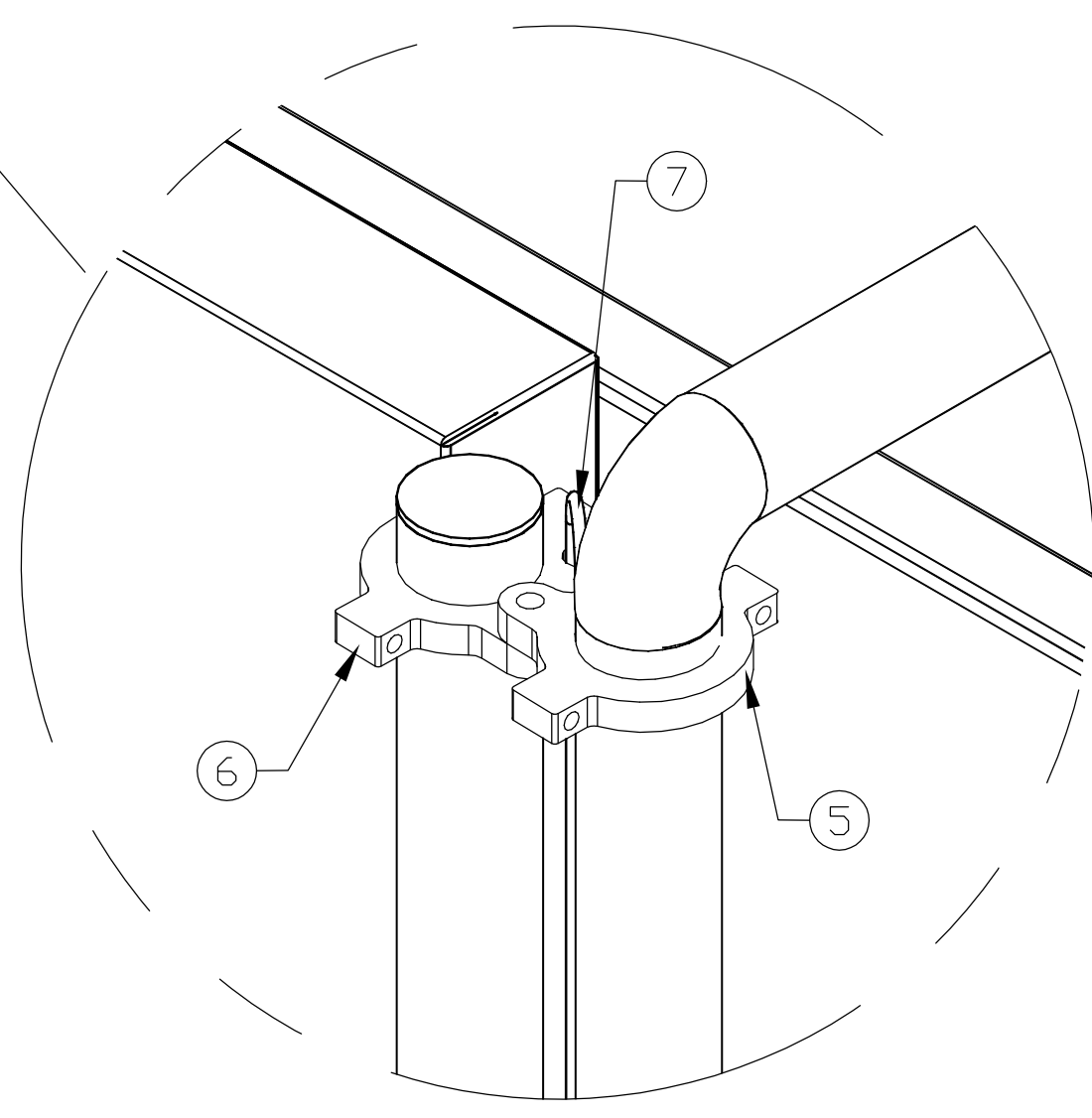
SEE
NOTE 1



PLAN VIEW
SHOWN WITHOUT COVER



SIZE	NUMBER OF PANELS WIDTH	LENGTH
UNDER 4'-0"	1	1
4'-1" THRU 4'-6"	N/A	1
4'-7" THRU 9'-10"	N/A	2
9'-11" THRU 15'-0"	N/A	3
OVER 15'-0"	CONSULT FACTORY	



SPECIFICATIONS

1. Fiberglass reinforced polymer (FRP), yellow, uv resistant & fire retardant (ø1.91)
2. Self closing (FRP) gate (ø1.91)
3. Aluminum post supports
4. Steel corner brackets (hot dip galvanized)
5. Aluminum gate hinge
6. Aluminum post hinge
7. Stainless steel torsion rod

NOTES:

1. TOP OF RAIL TO BE SET 42" ABOVE THE ROOF SURFACE OR DECK
2. STANDARD LEFT HAND GATE SHOWN
3. ALL FASTENERS STAINLESS STEEL
4. ALL PARTS AND FASTENERS ARE INCLUDED IN PACKAGE. CAPFLASHING MUST BE STRUCTURALLY SOUND TO SUPPORT ASSEMBLY.
5. NUMBER OF PANELS VARIES WITH SIZE, SEE CHART.

Customer:

P.O. N°


Job:

Contractor:

Architect:

Engineer:

Sales Rep:



Manufacturers of Doors for Special Services
THE BILCO COMPANY
New Haven, Connecticut 06505

BIL-GUARD®
HATCH RAIL SYSTEM
SIDE EXIT

QTY

TYPE
RL

SIZES
W L
___ x ___

SINGLE LEAF ROOF SCUTTLE

THIS DRAWING IS THE PROPERTY OF THE BILCO COMPANY AND INCORPORATES INFORMATION WHICH IS PROPRIETARY. PUBLICATION AND/OR PUBLIC DISTRIBUTION IN WHOLE OR IN PART IS EXPRESSLY PROHIBITED WITHOUT THE PRIOR WRITTEN CONSENT OF THE BILCO COMPANY. THE INFORMATION CONTAINED HEREIN REMAINS THE PROPERTY OF THE BILCO COMPANY. ALL RIGHTS RESERVED.