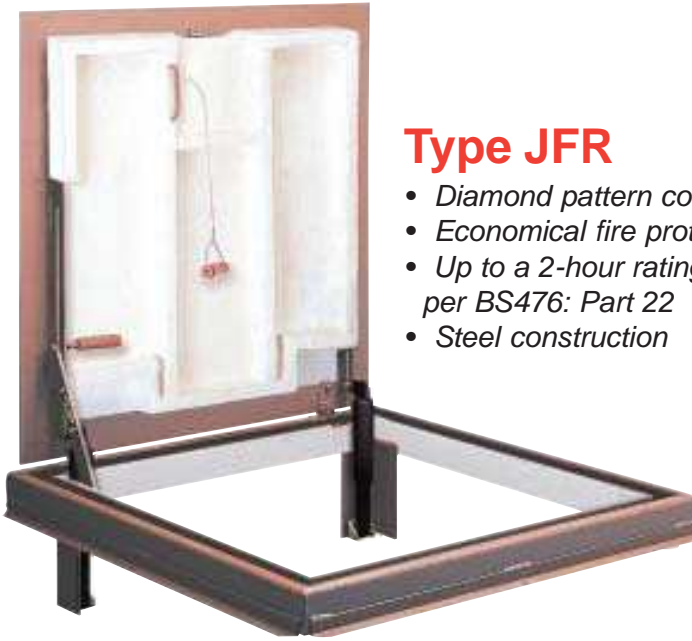


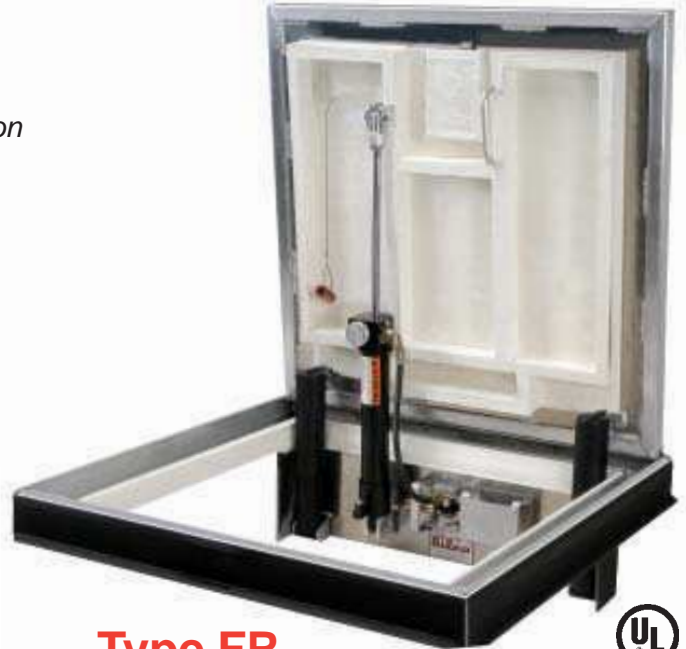
# Bilco Fire Rated Floor Doors

Two great options to meet your fire protection needs



## Type JFR

- Diamond pattern cover
- Economical fire protection
- Up to a 2-hour rating per BS476: Part 22
- Steel construction



## Type FR

- Pan-type cover design accepts flooring material for aesthetic fire protection
- 2-hour rated per ASTM E119, NFPA 251, and BS476: Part 22
- Aluminum construction

Bilco Fire Rated floor doors allow you to specify convenient access through a 2-hour fire rated floor without jeopardizing fire code compliance. Tested and approved for U.S. and British standards, doors contain flames and limit heat transmission through fire rated floor/ceiling assemblies. Doors feature a fire/heat resistive coating, counterbalanced cover operation, and are available with a specially designed closing mechanism to ensure that the cover closes in the event of a fire. Bilco fire rated doors are commonly used in subway platforms, hospitals, schools, power plants, and in telecommunication and industrial applications.



*Type JFR with diamond pattern plate cover and red oxide primer finish*



*Type FR accepts flooring material up to 1/2" (13mm) in thickness*

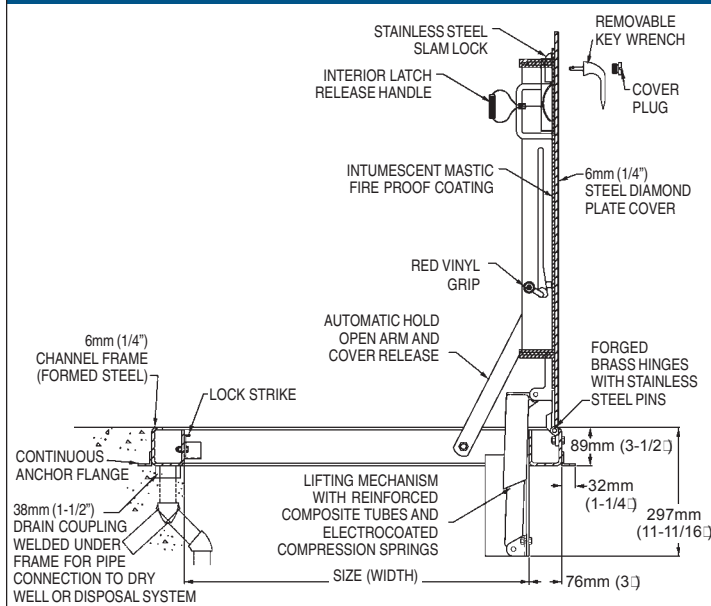


*Bilco's UL-Labeled self-closing mechanism is standard on Type FR doors and can be specified on Type JFR doors.*

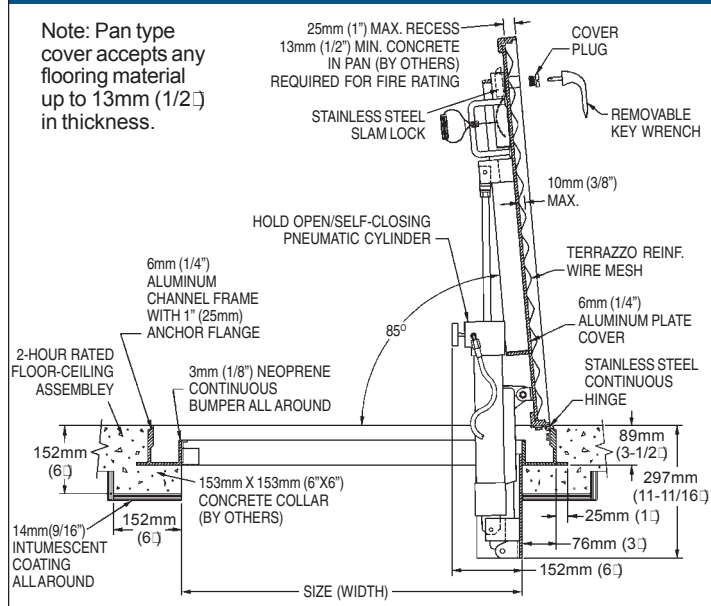


*Building on Our Tradition*

## Type JFR Diamond Pattern Cover



## Type FR Pan-Type Cover



Note: Pan type cover accepts any flooring material up to 13mm (1/2") in thickness.

## Specifications:

### Material

- Type JFR: Cover and frame are 6mm (1/4") steel
- Type FR: Cover and frame are 6mm (1/4") aluminum

### Cover

- Type JFR: Diamond pattern plate reinforced for 1464 kg/m<sup>2</sup> (300 psf) live load. Intumescent fire coating applied to the underside of the cover.
- Type FR: Smooth plate reinforced for 732 kg/m<sup>2</sup> (150 psf) live load. Intumescent fire coating applied to the underside of the cover. Designed with 25mm (1") fillable pan for field installation of architectural flooring material up to 13mm (1/2") thickness (specify flooring material including type, thickness, and weight). The remaining depth must be filled with concrete to maintain the fire rating of the door assembly (if finish floor is not desired, the pan must be filled with 25mm (1") of concrete).

### Frame

- Type JFR: Formed channel frame with anchor angle welded around the perimeter. Intumescent fire coating applied on the interior surfaces of the frame.
- Type FR: Extruded aluminum frame with built in anchor flange around the perimeter. Intumescent fire coating applied on the interior surfaces of the frame.

### Lift Assistance

- Type JFR: Compression spring operators enclosed in telescopic tubes. Automatic hold-open arm with grip handle release.
- Type FR: Compression spring operators enclosed in telescopic tubes. Mechanical hold-open system with release button automatically holds the cover in the open position.

### Latch

- Type JFR: Type 316 stainless steel slam lock with fixed interior handle and removable exterior turn/lift handle. (Note: can be supplied with self-closing mechanism on sizes 762mm (30") in width and greater when specified).
- Type FR: UL-Labelled pneumatic self closing system automatically closes the door in the event of a fire when heat parts a UL-listed 74°C (165°F) fusible link. (Note: Specify Type FR-LC if the closing mechanism is not required by local fire authorities having jurisdiction.)

### Hinges

- Type JFR: Heavy forged brass hinges with 10mm (3/8") type 316 stainless steel hinge pins.
- Type FR: Continuous heavy-duty type 316 stainless steel hinge.

### Performance Ratings

- Type JFR: Tested in accordance with BS476: Part 22 and approved for a 2-hour fire rating when exposed to fire from the underside.
- Type FR: Tested in accordance with ASTM E119, NFPA 251, BS476: Part 22, and UL-listed (File R15197) as having a 2-hour fire rating when exposed to fire from the underside.

### Finish

- Type JFR: Alkyd base red oxide primer.
- Type FR: Mill Finish aluminum with a bituminous coating applied to the exterior of the frame.

### Hardware

- Engineered composite compression spring tubes. Steel compression springs with electrocoated acrylic finish. All other hardware is zinc plated/chromate sealed.

## Standard Sizes & Weights:

SIZE		JFR - STEEL		FR - ALUMINUM					
mm	inches	Model	Weight		Model	*Clear Opening mm	inches	Weight	
			kg.	lbs.				kg.	lbs.
610 x 610	24 x 24	JFR-1	99	218	FR-2	736 x 603	29 x 23.75	123	271
762 x 762	30 x 30	JFR-2	132	291	FR-3	889 x 603	35 x 23.75	126	277
914 x 762	36 x 30	JFR-3	158	348	FR-4	889 x 755	35 x 29.75	148	326
914 x 914	36 x 36	JFR-4	176	388	FR-5	1016 x 908	40 x 35.75	167	368
1067 x 1067	42 x 42	JFR-5	236	520	FR-6	736 x 1060	29 x 41.75	149	328
762 x 1220	30 x 48	JFR-6	190	419					
914 x 1220	36 x 48	JFR-7	221	487					

\* Based on area occupied by self-closing mechanism



The Bilco Company  
 P.O. Box 1203  
 New Haven, CT. 06505 U.S.A.  
 Phone: (203)934-6363  
 Fax: (203)933-8478  
 E-mail: bilco@bilco.com  
[www.bilco.com](http://www.bilco.com)