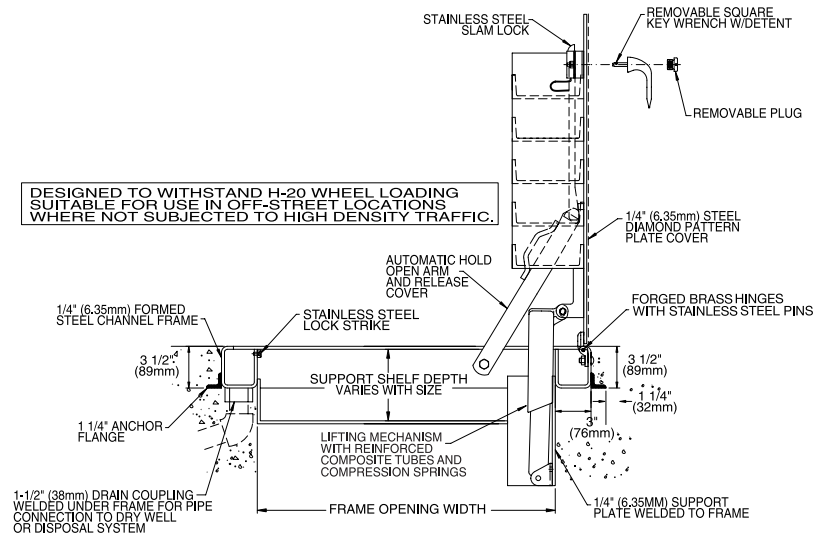




Type J-H20, JD-H20 Steel Channel Frame Door



Description:

Designed to withstand vehicular traffic in off-street locations. Single or double leaf covers are constructed of 1/4" (6.35mm) diamond pattern plate and reinforced for AASHTO H-20 wheel loading. Features reinforced composite spring tubes, heavy forged brass hinges and zinc plated/chromate sealed hardware.

Specifications:

Material

Cover and frame are 1/4" (6.35mm) steel

Cover

Diamond-pattern tread plate reinforced for H-20 wheel loading. Designed for installation in off-street locations where the door is not subjected to high-density, fast-moving traffic. Structural calculations available upon request.

Frame

Formed channel frame with full anchor angle welded around the perimeter. A 1-1/2" (38mm) drain coupling is welded under the frame for a pipe connection to a dry well or disposal system.

Hinges

Heavy forged brass hinges with 3/8" (9.5mm) Type 316 stainless steel hinge pins

Latch

Type 316 stainless steel slam lock with fixed interior handle and removable exterior turn/lift handle. Latch release is protected by a flush, gasketed, removable screw plug.

Lift Assistance

Compression spring operators enclosed in telescopic tubes. Automatic hold-open arm with grip handle release.

Finish

Alkyd base red oxide primer

Hardware

Engineered composite compression spring tubes. Steel compression springs. Slam lock and all fasteners are Type 316 stainless steel. All other hardware is zinc plated/chromate sealed.



Standard Sizes and Weights

SIZE		STEEL		
(width x length)		Model #	Weight	
inches	mm		lbs.	kg.
24 x 24	610 x 610	J-1 H20	250	113
30 x 30	762 x 762	J-2 H20	350	159
36 x 30	914 x 762	J-3 H20	425	193
36 x 36	914 x 914	J-4 H20	490	222
42 x 42	1067 x 1067	J-5 H20	635	288
48 x 30	1219 x 762	JD-1 H20	532	241
48 x 48	1219 x 1219	JD-2 H20	815	370
48 x 72	1219 x 1829	JD-3 H20	1235	560
60 x 60	1524 x 1524	JD-4 H20	1180	535

Models with "D" in the Model # indicate double leaf configuration