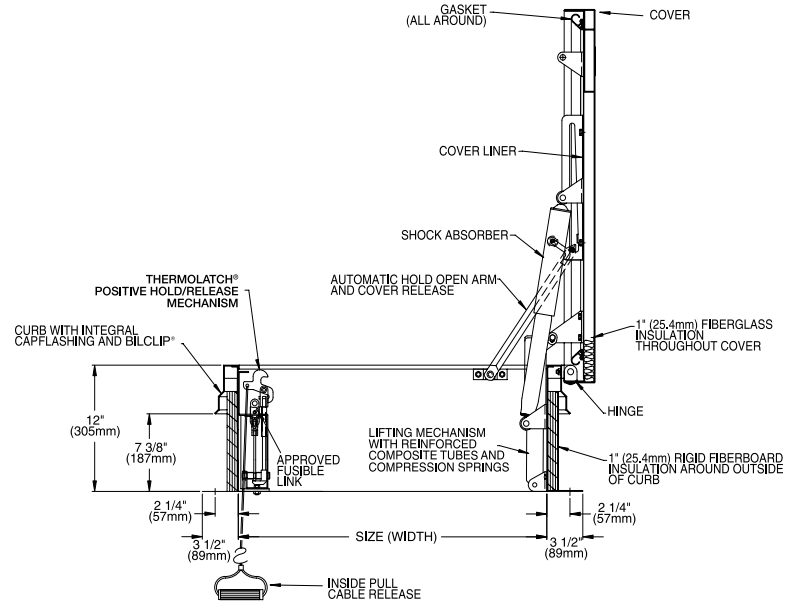




Type SV Single Leaf



Description:

For applications requiring smaller vents, single leaf models are available in galvanized steel or aluminum construction and can be provided with polycarbonate domes for added daylight.

Specifications:

Material (select one)

- Steel: Cover and frame are 14 gauge (1.9mm) G-90 paint bond galvanized steel
- Aluminum: Cover and frame are 11 gauge (2.3mm) aluminum

Cover

Brakeformed, hollow-metal design with 1" (25.4mm) concealed fiberglass insulation, 3" (76mm) beaded, overlapping flange, fully welded at corners, and internally reinforced for 40 psf (195 kg/m²) live load

Curb

12" (305mm) in height with integral capflashing, 1" (25.4mm) fiberboard insulation, fully welded at corners, and 3-1/2" (89mm) mounting flange with 7/16" holes (11mm) provided for securing frame to the roof deck

Gasket

Extruded EPDM rubber gasket permanently adhered to the cover

Hinges

Heavy-duty pintle hinges with 3/8" (9.5mm) Type 316 stainless steel hinge pins

Latch

Positive hold/release mechanism controlled by a single UL-listed 165°F (74°C) fusible link. Designed to hold the cover closed against a 90 psf (438 kg/m²) uplift force. Provided with interior and exterior pull release cables to manually open vent cover.

Operation

Compression springs enclosed in telescopic tubes open covers automatically against a 10 psf (49 kg/m²) snow/wind load when released. Automatic hold-open arms lock the cover in the full open position. Cover is supplied with a shock absorber to assure a controlled rate of opening.

Performance Rating

Complies with UL 790 Class A (burning brand test)

Finish

- Steel: Alkyd base red oxide primer
- Aluminum: Mill finish

Hardware

- Steel: Engineered composite compression spring tubes. Steel compression springs. All other hardware is zinc plated/chromate sealed.
- Aluminum: Engineered composite compression spring tubes. Steel compression springs. Type 316 stainless steel hinges. All other hardware is zinc plated/chromate sealed.



Standard Sizes and Weights **Contact Bilco for special size requirements**

SIZE		STEEL			STEEL CURB & ALUMINUM COVER			ALUMINUM			ALUMINUM WITH POLYCARBONATE DOME		
(width x length)		Model #	Weight		Model #	Weight		Model #	Weight		Model #	Weight	
inches	mm		lbs.	kg.		lbs.	kg.		lbs.	kg.		lbs.	kg.
36 x 30	914 x 762	S-20SV	193	88	S-40SV	160	73	S-50SV	112	51	GS-50SV	170	78
30 x 54	762 x 1372	NB-20SV	260	118	NB-40SV	215	98	NB-50SV	155	70	Consult Factory		
30 x 96	762 x 2438	L-20SV	423	192	L-40SV	315	143	L-50SV	240	109	Consult Factory		