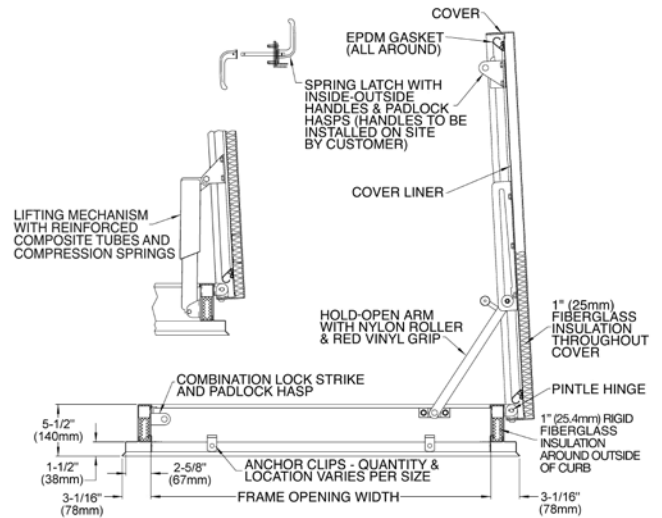




The VersaMount® Access Hatch



Optional anodized finish shown



Description:

The VersaMount® replacement hatch allows you to replace a damaged roof hatch without re-roofing. Simply remove the cover from the damaged hatch and place the VersaMount® hatch on top of the existing curb. The low-profile curb features a built-in flange and apron and innovative anchor clip system to ensure a fast, secure and weathertight installation. Available in a number of standard sizes.

Specifications:

Material (select one)

- Steel: Cover and frame are 14 gauge (1.9mm) G-90 paint bond galvanized steel
- Aluminum: Cover and frame are 11 gauge (2.3mm) aluminum
- Stainless Steel: Cover and frame are 14 gauge (1.9mm) Type 304 stainless steel

Cover

Brakeformed, hollow-metal design with 1" (25.4mm) concealed fiberglass insulation, 3" (76mm) beaded, overlapping flange, fully welded at corners, and internally reinforced for 40 psf (195 kg/m²) live load

Curb

4" (102mm) in height, brakeformed hollow-metal design with 1" (25.4mm) concealed fiberglass insulation, 2-5/8" (67mm) mounting flange and 1-1/2" (38mm) apron, fully welded at corners. Stainless steel anchor clips are included.

Gasket

Extruded EPDM rubber gasket permanently adhered to the cover

Hinges

Heavy-duty pintle hinges with 3/8" (9.5mm) Type 316 stainless steel hinge pins

Latch

Slam latch with interior and exterior turn handles and padlock hasps

Lift Assistance

Compression spring operators enclosed in telescopic tubes. Automatic hold-open arm with grip handle release.

Finish

- Steel: Alkyd base red oxide primer
- Aluminum: Mill finish
- Stainless Steel: Type 304 stainless steel with bead blast finish

Hardware

- Steel: Engineered composite compression spring tubes. Steel compression springs. All other hardware is zinc plated/chromate sealed.
- Aluminum: Engineered composite compression spring tubes. Steel compression springs. Type 316 stainless steel hinges. All other hardware is zinc plated/chromate sealed.
- Stainless Steel: Type 316 stainless steel



Job-Built Wood Curbs



Job-Built Concrete Curbs



Existing Roof Hatch or Job-Built/Prefab Metal Curbs

Standard Sizes and Weights

SIZE		STEEL		ALUMINUM		STAINLESS STEEL				
(width x length)		Model #	Weight		Model #	Weight				
inches	mm		lbs.	kg.		lbs.	kg.			
36 x 30	914 x 762	S-20VM	152	70	S-50VM	86	39	S-90VM*	152	70
30 x 54	762 x 1372	NB-20VM	180	82	NB-50VM	100	46	NB-90VM*	180	82
30 x 96	762 x 2438	L-20VM	320	145	L-50VM	178	81	L-90VM*	320	145
1m x 1m		EW-20VM	170	77	EW-50VM	90	41	EW-90VM*	170	77

*These models are a special order.