



Boise Cascade[®]
ENGINEERED WOOD PRODUCTS

EWP FDIG | U.S.



FIRE DESIGN AND INSTALLATION GUIDE

bc.com/ewp

Reorder #MTP-7050

Introduction

Boise Cascade manufactures and distributes quality Engineered Wood Products for modern construction throughout the United States and Canada. These products include BCI® and AJS® wood I-joists, Versa-Lam® LVL beams/columns/studs, BOISE GLULAM® beams/columns, and BOISE RIMBOARD® products. When compared to sawn lumber, Boise Cascade Engineered Wood Products provide higher strength, stiffness and dimensional consistency through more efficient use of raw materials to exacting

industry quality standards required for modern construction.

This guide provides detailed information for the design and construction professional about the relationship between Boise Cascade Engineered Wood Products, national building codes, and actual fire events. For further information, contact Boise Cascade EWP Engineering at (800) 232-0788 or your local Boise Cascade representative.

Boise Cascade Chain-Of-Custody Certifications

Boise Cascade Engineered Wood Products (EWP) has a proven track record of providing quality wood products and a nationwide building materials distribution network for our customers, helping them to enhance their own businesses.

Boise Cascade engineered wood products build better homes with stronger, stiffer floors using only wood purchased in compliance with a number of green building programs.

Take a moment to view our sustainability certification at bc.com/certification-wp/ or go to bc.com/sustainability for more information.

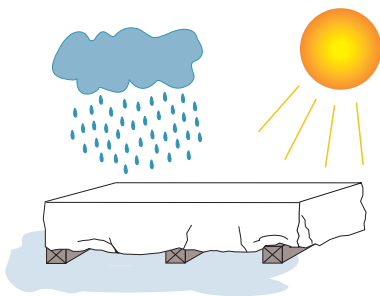
Boise Cascade engineered wood products throughout North America can be ordered FSC® Chain-of-Custody (COC) certified, enabling homebuilders to achieve LEED® points residential and commercial green building programs including LEED for Homes and LEED for New Construction.

Boise Cascade engineered wood products are available as PEFC® Chain-of-Custody certified, SFI® Chain-of-Custody certified and SFI® Fiber-Sourcing certified, as well as NAHB Research Center Green Approved, enabling homebuilders to also obtain green building points through the Green Building Standards.

TABLE OF CONTENTS

Boise Cascade Chain-Of-Custody Certifications	2
Boise Cascade EWP Product Profiles	3
Introduction	3
Residential Construction and Fire Safety	4
Engineered Construction and Fire Safety	6
Fire Resistance Rated Floor and Roof Assemblies	7–13
Fire Resistance Rated Wall Assemblies	14
Fire Resistance Rated Rim Board Assemblies	15–19
Type IIIA Construction Wall / Floor Intersection Details	20
Sprinkler Attachments	22
Introduction	22
Commercial Sprinkler Pipe Weight	22
Sprinkler Attachment Details FS01 – FS19	22–25
Residential Sprinkler Details (FS20 – FS21)	25
BCI® Joist Hole Location and Sizing	26
Large Rectangular Holes	26
AJS® Joist Hole Location and Sizing	27
Calculated Fire Resistance	28
Calculated Fire Resistance – Versa-Lam® LVL	28
Roof Load Tables	29
Calculated Fire Resistance – BOISE GLULAM®	30
Frequently Asked Questions Regarding Fire Resistance	31

Protect product from rain and sun.



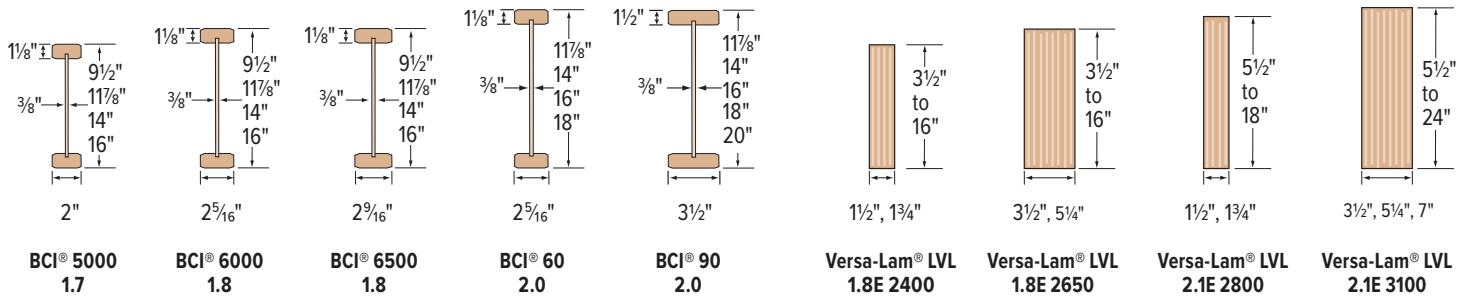
Keep product level and off the ground.

PRODUCT STORAGE AND HANDLING

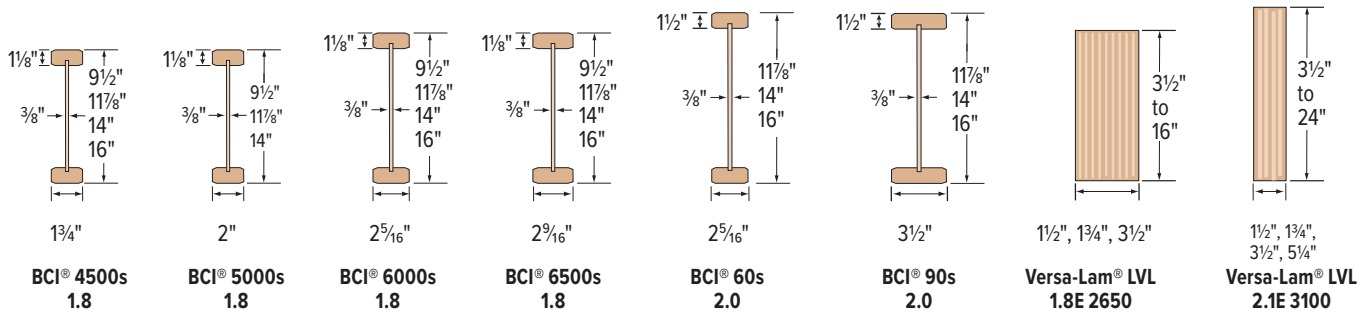
- ▶ BCI® and AJS® joists and Versa-Lam® LVL
 - must be stored, installed and used in accordance with the Boise Cascade EWP Installation Guide, building codes and, to the extent not inconsistent with the Boise Cascade EWP Installation Guide, usual and customary building practices and standards.
 - must be wrapped, covered, and stored off of the ground on stickers at all times prior to installation.
 - are intended only for applications that ensure no exposure to weather or the elements and an environment that is free from moisture from any source, or any pest, organism or substance which degrades or damages wood or glue bonds.
- ▶ Unload products carefully and support to reduce excessive bowing. Use forklifts and cranes carefully to avoid damaging product.
- ▶ Do not use a visibly damaged product. Contact your local Boise Cascade representative for assistance.
- ▶ Failure to correctly store, use, or install BCI® and AJS® joists or Versa-Lam® LVL in accordance with the Boise Cascade EWP Installation Guide will void the limited warranty.

Boise Cascade EWP Product Profiles

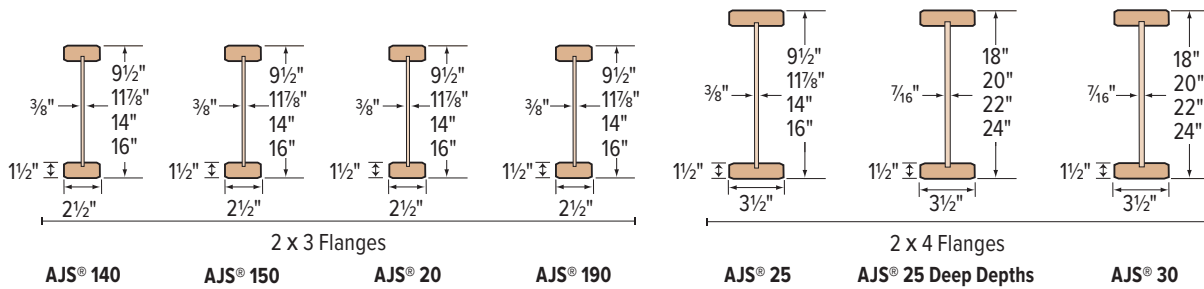
BCI® Joists and Versa-Lam® LVL Beams — West (White City, OR)⁽¹⁾



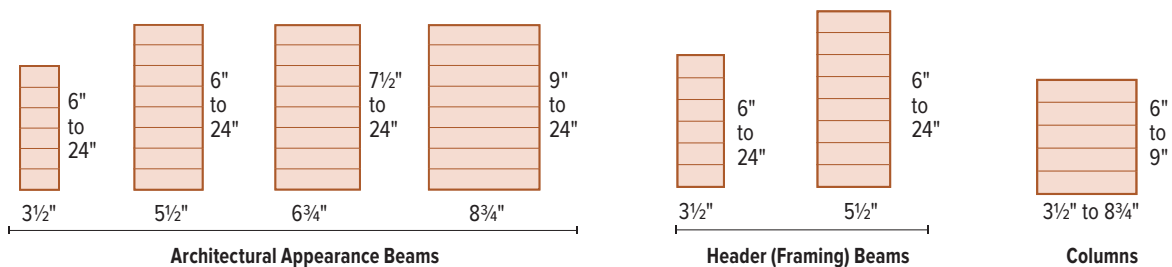
BCI® Joists and Versa-Lam® LVL Beams — East (Lena, LA and Thorsby, AL)⁽¹⁾



AJS® Joists (St. Jacques, NB)



BOISE GLULAM® (Homedale, ID)⁽²⁾



⁽¹⁾ Some products may not be available in all markets, contact your Boise Cascade EWP representative for availability.

⁽²⁾ Larger widths and depths are available, contact your Boise Cascade EWP representative for availability.

Residential Construction and Fire Safety

The performance of all structural building materials and systems degrade when exposed to fire and wood is no exception. Society's concern for fire safety is reflected in limitations and design requirements mandated through national building codes. Significant improvement in material and building performance can be realized with knowledge of fire safety design and evaluation involving prevention, detection, containment, and evacuation.

It is widely recognized that structure fires are highly variable in their size, rate of growth and intensity. Building contents (furniture, window coverings, electronic equipment, personal belongings) are the first items ignited and constitute the primary source of fuel in structure fires. Given all possible variations, there is no known way to determine how the fire will grow; therefore, each fire scenario is unique. If there is a fire in a structure, there is no "safe" amount of time that one can remain within the structure, even if everything was designed in accordance with all relevant codes and the time elapsed from ignition is known.

Prevention

The proper design, construction, and maintenance of a building and its components are important steps in preventing a fire in the first place. The International Residential Code® (IRC®) includes chapters on mechanical system requirements (Chapter 13), fuel gas (Chapter 24), and electrical (Chapter 33) that require appliances and electrical components that have the potential to accidentally initiate ignition to be tested and listed for their respective application, and to bear a label from an approved listing agency with that information.

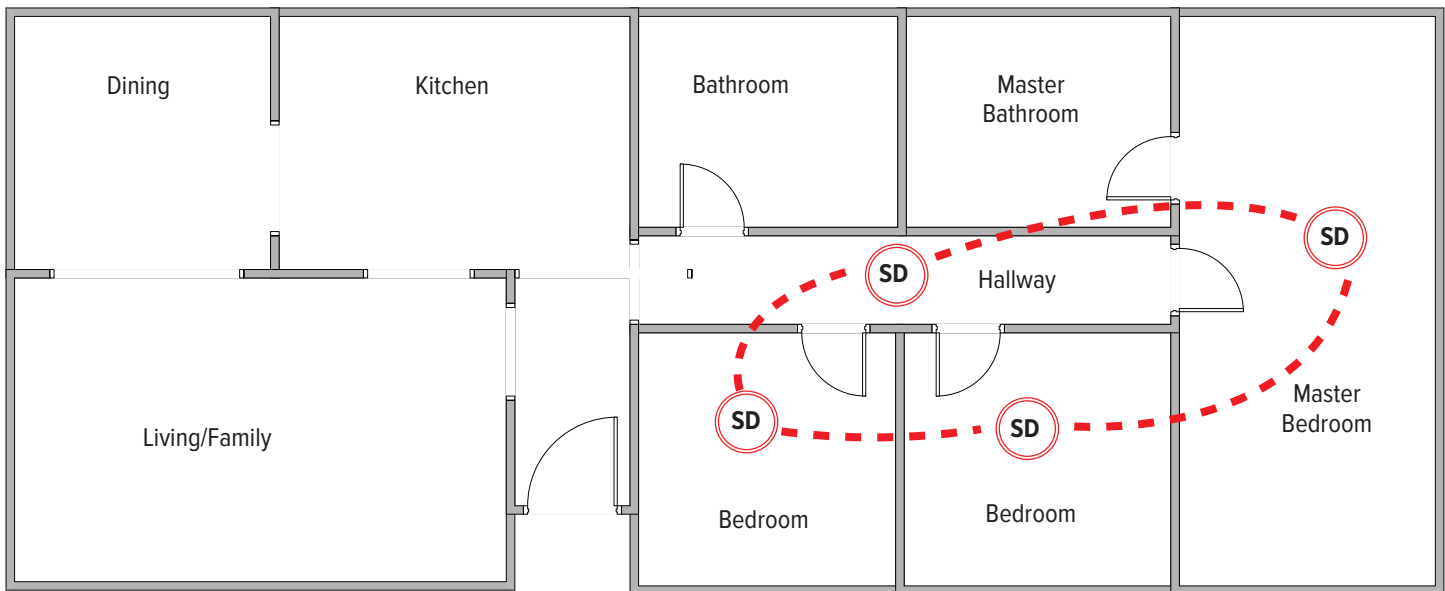
Detection

The IRC mandates the installation of smoke detectors in Chapter 3 — Building Planning. The requirement for smoke detectors in all new home construction gives most occupants three to five minutes to escape from a home before smoke and flame become life threatening. Since the introduction of smoke detectors into homes, fire deaths have been reduced by nearly 50 percent. Per section R314.3 of the IRC, smoke detectors are required in all bedrooms, outside bedrooms in the intermediate vicinity (hallway), and on each additional story, including basements.

Section R313 of the 2009 IRC mandated fire sprinkler systems for all one and two family dwellings. This provision received much debate within the residential construction and design community. Many state and local jurisdictions have since amended or revoked this provision. Please check with your local building official for further information regarding residential sprinkler requirements.

Attachment details for residential fire sprinkler systems are located on page 23 of this guide.

Example of Residential Smoke Detector Placement



Residential Construction and Fire Safety

Containment

The ability to contain the fire within a certain space is dependent upon the fire resistance of the walls, doors, ceiling, and floors. The IRC addresses containment in Chapters 3 and 6, prescribing separation with provisions for exterior walls and attached garages.

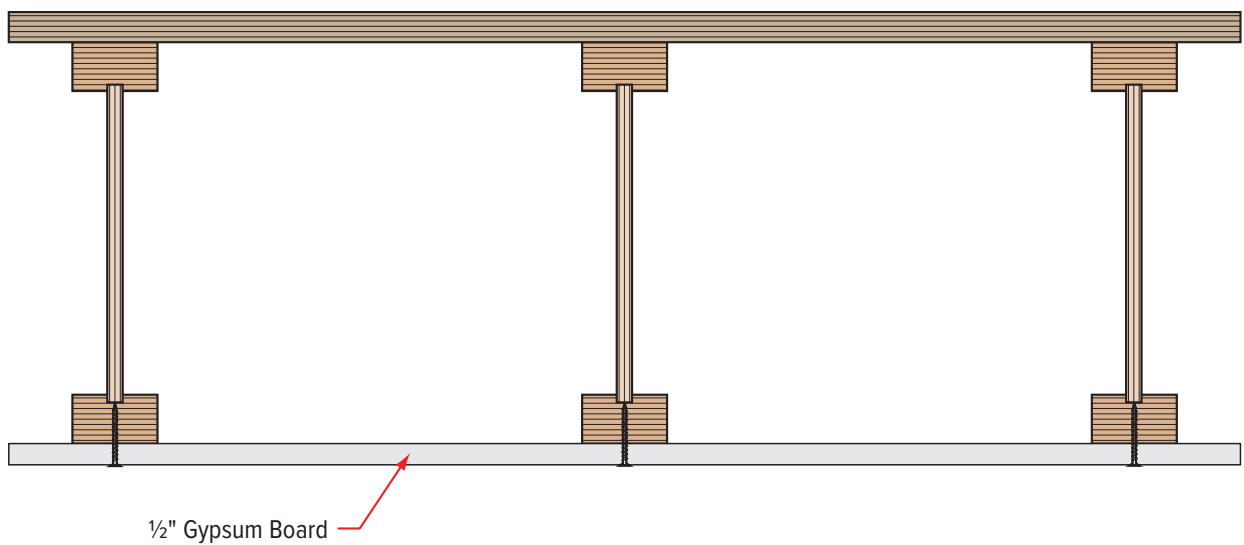
For residential basement ceilings, a simple, cost effective yet significant increase in fire resistance can be achieved by simply adding a single layer of ½" gypsum wallboard or ⅝" wood structural panel to the floor joists. The use of such membrane protection will very likely more than double the fire-endurance time for all commonly used wood floor joist systems, including dimension lumber, open web trusses and I-joists. In addition,

finishing the ceilings can increase the value of the home, increase floor performance, and reduce energy loss. Membrane protection was mandated in the 2012 IRC for all joist types except dimension lumber, in structures that do not have automatic fire sprinkler systems or other approved fire protection.

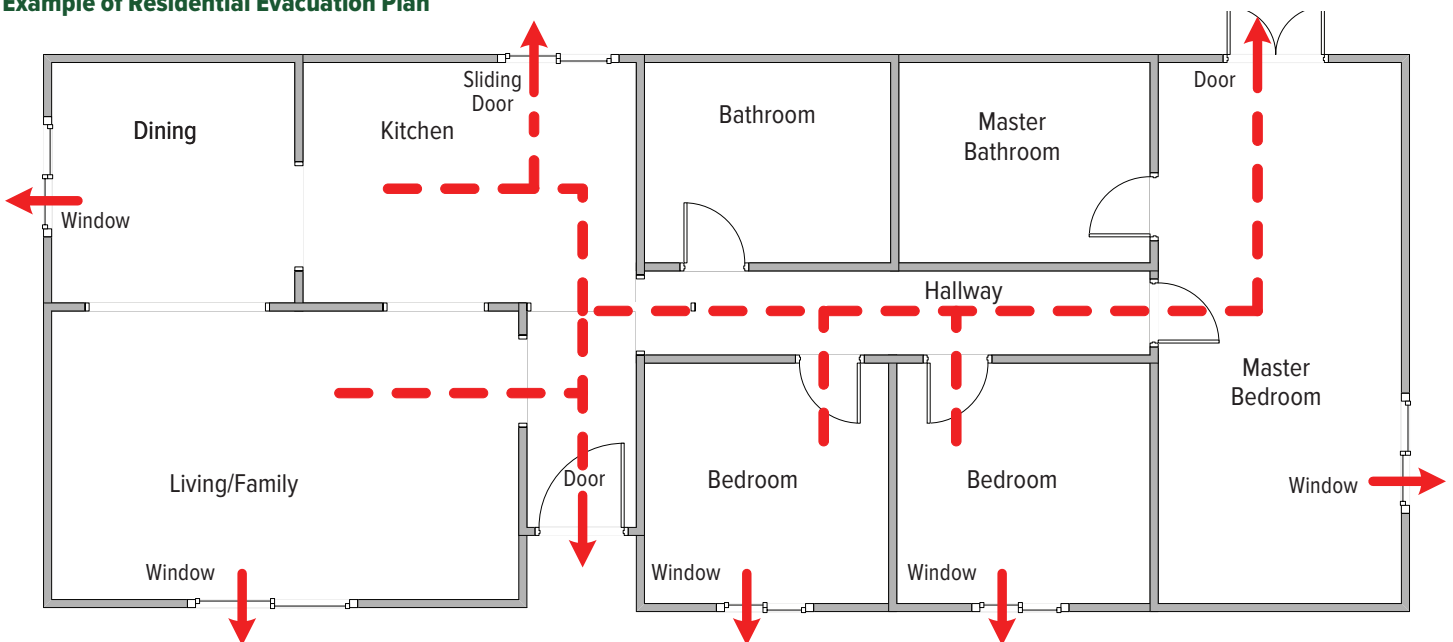
Evacuation

Emergency escape and rescue openings are addressed in Chapter 3 of the IRC. Since the majority of residential fire deaths are the result of occupants sleeping during a fire, the IRC requires that all bedrooms and basements have adequate windows or doors for emergency escape purposes.

Example of Residential Basement Ceiling Style



Example of Residential Evacuation Plan



Engineered Construction and Fire Safety

Engineered construction refers to all buildings outside the scope of the IRC. U.S. building codes that address engineered construction include the International Building Code® (IBC®), the International Fire Code® (IFC®), the International Mechanical Code® (IMC®), the International Fuel Gas Code® (IFGC®), and the International Electrical Code® (IEC®). These national codes address the fire safety design issues mentioned previously, only in greater detail.

Types of Construction

Construction type is a function of occupancy classification (group), number of stories and height above grade plane, and area per story.

Type I & II — The building elements are of noncombustible materials. Versa-Lam® LVL and BOISE GLULAM® are allowed in Type I and II roof construction where a 1-hour fire resistance rating is required.

Type III — The exterior walls are of noncombustible materials or fire retardant treated wood and the interior building elements are of any material permitted by code. Versa-Lam® LVL, BCI® Joists, AJS® Joists, and BOISE GLULAM® are allowed in Type III construction everywhere except for exterior load bearing walls.

- ▶ See pages 26-28 for Calculated Fire Resistance for Versa-Lam® LVL and BOISE GLULAM®.
- ▶ See Fire Resistance Rated Floor and Roof Assemblies for BCI® / AJS® joists starting on page 7.
- ▶ See Fire Resistance Wall Assemblies for Versa-Lam® LVL on page 14 for interior load bearing walls.

Type IV HT (Heavy Timber Construction) —

The exterior walls are of noncombustible materials and the interior building elements are of solid or laminated wood without concealed spaces. Because of wood's ability to maintain structural capacity during fire, Heavy Timber allows large, open areas with exposed beams and columns. Minimum cross-sectional areas are required for framing members for Heavy Timber. Please see the table below for minimum BOISE GLULAM® and Versa-Lam® LVL sizes.

Type IV HT Construction - Minimum Section Requirements

Application	Min. Nominal Size per Code	Min. Compliant BOISE GLULAM®	Min. Compliant Versa-Lam® LVL
Floor Beam	6 x 10	5 1/8" x 10 1/2"	5 1/4" x 11 1/4"
Room Beam	4 x 6	3 1/8" x 7 1/2"	3 1/2" x 5 1/2"
Column – supporting floor load	8 x 8	8 3/4" x 9" 6 3/4" x 9"	7" x 9 1/4"
Column – supporting roof and/or ceiling loads only	6 x 8	8 3/4" x 9" 5 1/8" x 9"	5 1/4" x 8 5/8"

- ▶ See pages 26-28 for Calculated Fire Resistance for Versa-Lam® LVL and BOISE GLULAM®.

Boise Cascade laminated and solid decking may be installed as roof decking per the provisions listed in the Type IV section of the IBC.

Type V – The building elements are of any materials permitted by code. Versa-Lam® LVL, BCI® Joists, AJS® Joists, and BOISE GLULAM® are allowed in Type V construction everywhere.

- ▶ See pages 26-28 for Calculated Fire Resistance for Versa-Lam® LVL and BOISE GLULAM®.
- ▶ See Fire Resistance Rated Floor and Roof Assemblies for BCI® / AJS® joists starting on page 7.
- ▶ See Fire Resistance Wall Assemblies for Versa-Lam® LVL on page 14 for interior load bearing walls.

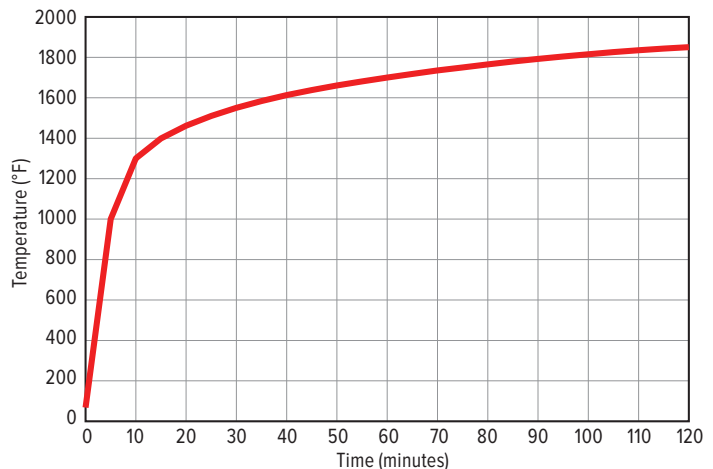
Fire Resistance Ratings

Fire resistance is the ability of materials or assemblies to prevent or restrict the passage of excessive heat, hot gases, or flames while continuing to support the structural loads. The performance of wall and floor assemblies exposed to fire is determined through testing in accordance with ASTM E119 or NFPA 251 or CAN/ULC-S101. In a full-scale assembly test (at least 180 ft² for a floor assembly and 100 ft² for a wall assembly), a specimen is loaded to the maximum design load and directly exposed to flame. The rate of temperature rise is controlled to follow a standard time-temperature curve.

Results of full-scale fire endurance assembly tests provide a repeatable, relative measure of fire resistance based on three failure criteria: structural collapse, flame penetration, or excessive temperature rise on the unexposed surface of the assembly. National building codes require that certain types of buildings or occupancy classes be constructed with floor and wall assemblies that provide fire endurance for a specified period of time based on these tests.

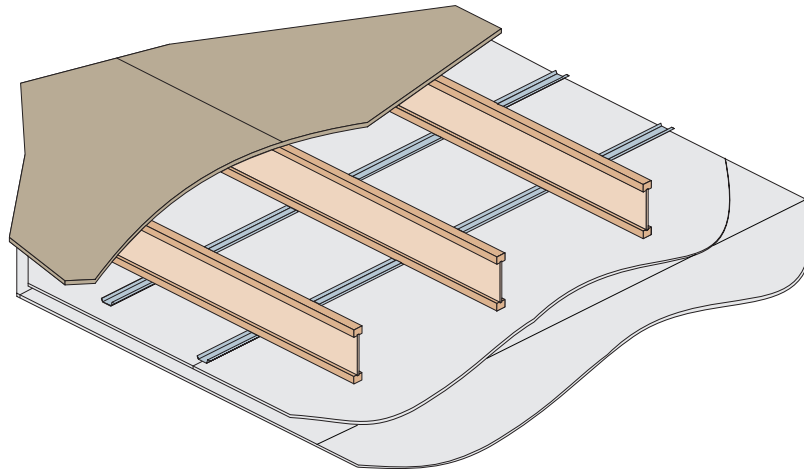
When required by national building codes, fire endurance rated assemblies are available for BCI®, AJS® and Versa-Lam® LVL products. The fire endurance assemblies in this guide can be further referenced in the International Building Code, ICC-ES ESR Evaluation Reports, *Design for Code Acceptance 3* published by the American Wood Council, and/or assembly listings with APA – The Engineered Wood Association (APA Product Report PR-S201).

Standard Time – Temperature Curve for Control of Fire Tests



One-Hour Fire Resistance Rated Floor and Roof Assemblies

Two Layers 5/8" Type X Gypsum Wallboard — BCI® and AJS® Joists



Base Assembly

Component	Material Specification
Floor Topping (Optional)	Varies
Reference sound ratings if applicable	
Floor Sheathing	Min. 5/8" (15 mm) Wood Structural Panel
A modified contact construction adhesive must be applied to the top of the joists prior to placing sheathing. The sheets shall be installed with their long edge perpendicular to the joists with end joists centered over the top flange of joists and staggered one joist spacing with adjacent sheets. Floor sheathing must be installed per code requirements.	
Insulation (Optional)	Max 9 1/2" (241 mm) Glass Fiber Insulation
Reference Sound ratings if applicable	
Structural Members	Min. 9 1/2" (241 mm) Deep Joists
Maximum 24" (610 mm) on center spacing. Minimum flange dimensions of 1 1/8" (29 mm) thick by 1 1/2" inch (38 mm) wide.	
Resilient Channels (Optional)	Min. 0.019" (0.5 mm) Galvanized Resilient Channel
Attached perpendicular to the bottom flange of the joist with 1 1/4" (32 mm) Type S drywall screws. Channels are spaced a maximum of 16" (406 mm), 24" (610 mm) on center when I-joists are spaced a maximum of 16" on center.	
Ceiling	(2) Layers of 5/8" (16 mm) Type X Gypsum Wallboard
<p>Base Layer: Install with long dimension perpendicular to joist length. Attached to the bottom flange of the joists using 1 1/4" (32 mm) Type W drywall screws at 24" (610 mm) on center. The end joints of the wallboard must be centered on the bottom flange of the joist and must be staggered the equivalent of two joist spacings with those of adjacent sheets.</p> <p>Face Layer: Install with long dimension perpendicular to joist length. Attached to the bottom flange of the joists through the first layer using 1 7/8" (48 mm) Type W drywall screws spaced at 12" (305 mm) on center. The longitudinal joints of this layer must be offset 24" (610 mm) from those of the base layer. The end joints must be centered on the bottom flange of the joists and offset a minimum of one joist spacing from those of the base layer. Additionally, face layer end joints are attached to the base layer with 1 1/2" (38 mm) Type G drywall screws at 12" (305 mm) on center placed 2" (51 mm) either side of the joint.</p> <p>With Resilient Channels: attached as described above except use 1 3/8" (35 mm) and 1 3/4" (44 mm) Type S screws for the base and face layer, respectively. The end joints of the wallboard must be centered on a resilient channel and must be staggered the equivalent of two joist spacings with those of adjacent sheets.</p> <p>Finish: The face layer joints must be covered with tape and coated with joint compound. Screw heads must also be covered with joint compound.</p>	

Sound Rating (with Resilient Channel)

Components	STC	IIC
Base Assembly with carpet and padding	54	68
Base Assembly with 3 1/2" (89 mm) insulation	55	46
Base Assembly with additional layer of 5/8" sheathing and 9 1/2" insulation	61	50
Base Assembly with Tarkett "Acoustiflor" vinyl and 3 1/2" insulation	59	50
Base Assembly with cushioned vinyl, 3/4" gypsum concrete and 3 1/2" insulation	67	51

REFERENCE

BCI® Joists

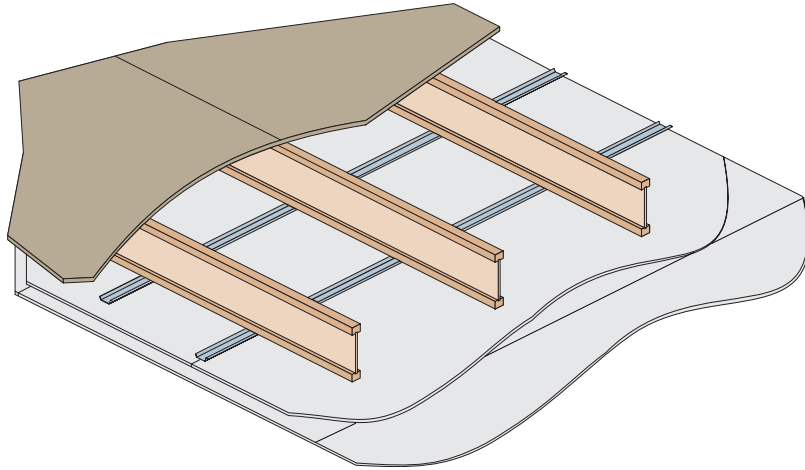
- ▶ 2021 IBC® Table 721.1(3), Item Number 21-11
- ▶ ICC-ES/APA ESR-1336 and APA PR-S201 FR2
- ▶ Similar to 2020 NBCC Table A-9.10.3.1.B, Assembly Num. F4, F9, F11, and F13, F15, F17, and F21.

AJS® Joists

- ▶ 2021 IBC® Table 721.1(3), Item Number 21-11
- ▶ APA PR-S201 FR2
- ▶ Similar to 2020 NBCC Table A-9.10.3.1.B, Assembly Num. F4, F9, F11, and F13, F15, F17, and F21.

One-Hour Fire Resistance Rated Floor and Roof Assemblies

Two Layers ½" Type C Gypsum Wallboard — BCI® and AJS® Joists



Base Assembly

Component	Material Specification
Floor Topping (Optional)	Varies
Reference sound ratings if applicable	
Floor Sheathing	Min. 2 ³ / ₃₂ " (18 mm) Wood Structural Panel
A modified contact construction adhesive must be applied to the top of the joists prior to placing sheathing. The sheets shall be installed with their long edge perpendicular to the joists with end joists centered over the top flange of joists and staggered one joist spacing with adjacent sheets. Floor sheathing must be installed per code requirements.	
Insulation (Optional)	Max 9½" (241 mm) Glass Fiber Insulation
Reference sound ratings if applicable	
Structural Members	Min. 9½" (241 mm) Deep Joists
Maximum 2" (610 mm) on center spacing. Minimum flange dimensions of 1½" (29 mm) thick by 1½" (38 mm) wide.	
Resilient Channels (Optional)	Min. 0.019" (0.5 mm) Galvanized Resilient Channel
Attached perpendicular to the bottom flange of the joist with 1¼" (32 mm) Type S drywall screws. Channels are spaced a maximum of 16" (406 mm), 24" (610 mm) on center when I-joists are spaced a maximum of 16" on center.	
Ceiling	Two (2) Layers of ½" (13 mm) Type C Gypsum Wallboard
<p>Base Layer: Install with long dimension perpendicular to joist length. Attached to the bottom flange of the joists using 1¼" (32 mm) Type W drywall screws at 12" (305 mm) on center. The end joints of the wallboard must be centered on the bottom flange of the joist and must be staggered the equivalent of two joist spacings with those of adjacent sheets.</p> <p>Face Layer: Install with long dimension perpendicular to joist length. Attached to the bottom flange of the joists through the first layer using 1½" (41 mm) Type W drywall screws spaced at 12" (305 mm) on center on intermediate joists and 6" (152 mm) on center at end joints. The longitudinal joints of this layer must be offset 24" (610 mm) from those of the base layer. The end joints must be centered on the bottom flange of the joists and offset a minimum of one joist spacing from those of the base layer. Additionally, face layer end joints are attached to the base layer with 1½" (38 mm) Type G drywall screws at 8" (203 mm) on center placed 6" (152 mm) either side of the joint.</p> <p>With Resilient Channels: attached as described above except use 1¼" (32 mm) and 1½" (41 mm) Type S screws for the base and face layer, respectively. The end joints of the wallboard must be centered on a resilient channel and must be staggered the equivalent of two joist spacings with those of adjacent sheets.</p> <p>Finish: The face layer joints must be covered with tape and coated with joint compound. Screw heads must also be covered with joint compound.</p>	

Sound Rating (with Resilient Channel)

Components	STC	IIC
Base Assembly with carpet and padding	54	68
Base Assembly with 3½" (89 mm) insulation	55	46
Base Assembly with additional layer of 5/8" sheathing and 9½" insulation	61	50
Base Assembly with Tarkett "Acoustiflor" vinyl and 3½" insulation	59	50
Base Assembly with cushioned vinyl, ¾" gypsum concrete and 3½" insulation	67	51

REFERENCE

BCI® Joists

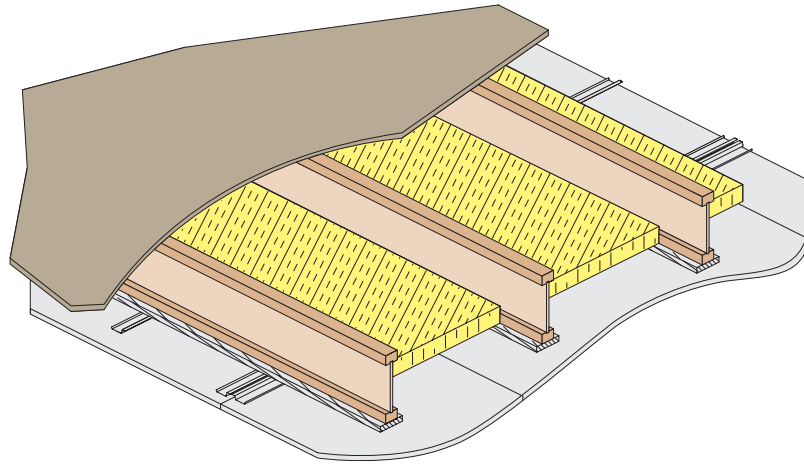
- ▶ 2021 IBC® Table 721.1(3), Item Number 27-1.1.1
- ▶ ICC-ES/APA ESR-1336 and APA PR-S201 FR3
- ▶ Similar to 2020 NBCC Table A-9.10.3.1.B, Assembly Num. F4, F9, F11, and F13, F15, F17, and F21.

AJS® Joists

- ▶ 2021 IBC® Table 721.1(3), Item Number 27-1.1.1
- ▶ APA PR-S201 FR3
- ▶ Similar to 2020 NBCC Table A-9.10.3.1.B, Assembly Num. F4, F9, F11, and F13, F15, F17, and F21.

One-Hour Fire Resistance Rated Floor and Roof Assemblies

One Layer 5/8" Type C Gypsum Wallboard — BCI® 60/90 and AJS® Joists



Base Assembly

Component	Material Specification
Floor Topping (Optional)	Varies
Reference sound ratings if applicable	
Floor Sheathing	Min. 23/32" (18 mm) Wood Structural Panel
A modified contact construction adhesive must be applied to the top of the joists prior to placing sheathing. The sheets shall be installed with their long edge perpendicular to the joists with end joists centered over the top flange of joists and staggered one joist spacing with adjacent sheets. Floor sheathing must be installed per code requirements.	
Insulation	Min. 2" (51 mm) Mineral Fiber Insulation, Min. 3.5 PCF
Installed adjacent to the bottom flange of the I-joist and supported by the 1 x 4 furring strips. The ends of the batts must be centered over resilient channels.	
Structural Members	Min. 9 1/2" (241 mm) Deep Joists
Maximum 24" (610 mm) on center spacing. Minimum flange dimensions of 1 1/2" (38 mm) thick by 1 1/2" (38 mm) wide.	
Furring Strips	1 x 4 (Nominal) Wood Furring Strips
Centered on the bottom flange of the I-joist and attached with 1 1/2" (38 mm) Type W screws at 24" (610 mm) on center..	
Resilient Channels (Optional)	Min. 0.019" (0.5 mm) Galvanized Resilient Channel
Attached perpendicular to the bottom flange of the joist with 1 7/8" (32 mm) Type S drywall screws. Channels are spaced a maximum of 16" (406 mm), 24" (610 mm) on center when I-joists are spaced a maximum of 16" on center.	
Ceiling	One (1) Layer of 5/8" (16 mm) Type C Gypsum Wallboard
Installed with long dimension parallel to furring strips and fastened with minimum 1 1/8" (29 mm) Type S drywall screws at 7" (178 mm) on center. The end joints of the wallboard must be staggered the equivalent of two joist spacings with those of adjacent sheets.	
Finish: The face layer joints must be covered with tape and coated with joint compound. Screw heads must also be covered with joint compound.	

Sound Rating (with Resilient Channel)

Components	STC	IIC
Base Assembly with Carpet and Padding	52	66
Base Assembly with cushioned vinyl, 3/4" gypsum concrete	55	49
Base Assembly with cushioned vinyl, 3/4" gypsum concrete, 1/4" Acousti-Mat II	58	57

REFERENCE

BCI® Joists

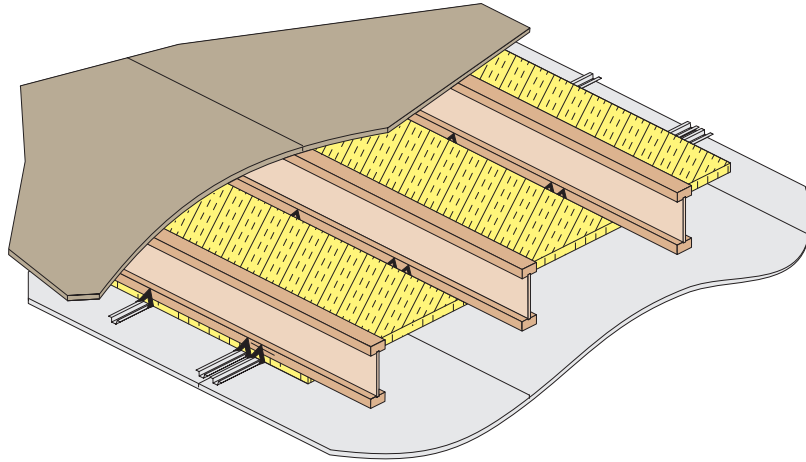
- ▶ 2021 IBC® Table 721.1(3), Item Number 22-1.1/21-1.1
- ▶ ICC-ES/APA ESR-1336 and APA PR-S201 FR4

AJS® Joists

- ▶ 2021 IBC® Table 721.1(3), Item Number 22-1.1/21-1.1
- ▶ APA PR-S201 FR4

One-Hour Fire Resistance Rated Floor and Roof Assemblies

One Layer 1/2" Type C Gypsum Wallboard — BCI® 60/90 and AJS® Joists



Base Assembly

Component	Material Specification
Floor Topping (Optional)	Varies
Reference sound ratings if applicable	
Floor Sheathing	Min. ²³ / ₃₂ " (18 mm) Wood Structural Panel
A modified contact construction adhesive must be applied to the top of the joists prior to placing sheathing. The sheets shall be installed with their long edge perpendicular to the joists with end joists centered over the top flange of joists and staggered one joist spacing with adjacent sheets. Floor sheathing must be installed per code requirements.	
Insulation	Min. 1" (25 mm) Mineral Fiber Insulation, Min. 6 PCF
Installed parallel to the I-joist between the furring channel and bottom flange. The sides of the insulation must butt against the support clips. The ends of the batts must be centered over furring channels.	
Structural Members	Min. 9 1/2" (241 mm) Deep Joists
Maximum 24" (610 mm) on center spacing. Minimum flange dimensions of 1 1/2" (38 mm) thick by 2 5/16" (59 mm) wide.	
Furring Channel	Min. 0.019" (0.5 mm) Furring Channel
Attached perpendicular to the bottom flange of the I-joist, with gap between bottom of bottom flange and top of channel equivalent to the thickness of the insulation, spaced a maximum of 24" (406 mm) on center and doubled at each wallboard end joint extending to the next joist beyond each joint. The channels must be attached with Simpson Strong-Tie® CSC support clips (or equal) at each intersection with the joists. Clips must be nailed to the side of the joist bottom flange with one 8d x 1 1/2" (38 mm) long nail.	
Ceiling	One (1) Layer of 1/2" (13 mm) Type C Gypsum Wallboard
Installed with long dimension perpendicular to furring channels and fastened with minimum 1" (25 mm) Type S drywall screws at 12" (305 mm) on center. The end joints of the wallboard must be staggered the equivalent of two joist spacings with those of adjacent sheets.	
Finish: The face layer joints must be covered with tape and coated with joint compound. Screw heads must also be covered with joint compound.	

Sound Rating⁽¹⁾

Components	STC	IIC
Base Assembly with carpet and padding	46	68
Base Assembly with cushioned vinyl, gypsum concrete	51	47
Base Assembly with carpet and padding, gypsum concrete	50	73

(1) Tabulated STC and IIC sound ratings are based on tests of assemblies having 5/8"-thick wallboard.

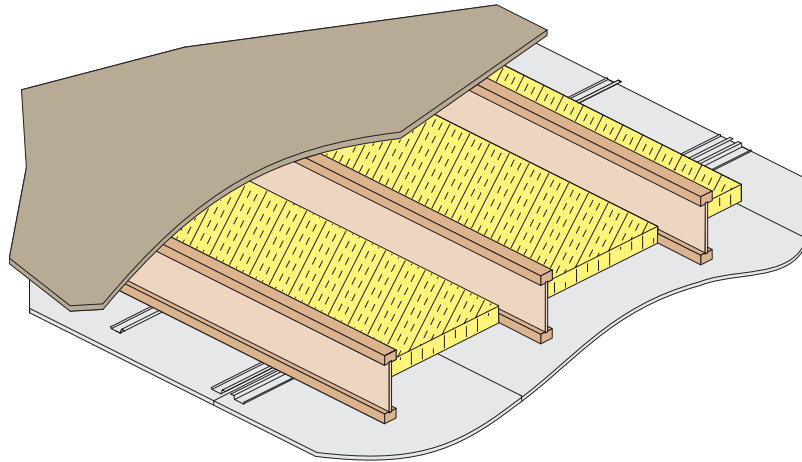
REFERENCE

BCI® 60/90 Joists
 ▶ DCA #3 WIJ-1.4

AJS® Joists
 ▶ DCA #3 WIJ-1.4

One-Hour Fire Resistance Rated Floor and Roof Assemblies

One Layer 5/8" Type C Gypsum Wallboard — BCI® 90 and AJS® 25/30 Joists



Base Assembly

Component	Material Specification
Floor Topping (Optional)	Varies
Floor Sheathing	Min. 2 ³ / ₃₂ " (18 mm) Wood Structural Panel
A modified contact construction adhesive must be applied to the top of the joists prior to placing sheathing. The sheets shall be installed with their long edge perpendicular to the joists with end joists centered over the top flange of joists and staggered one joist spacing with adjacent sheets. Floor sheathing must be installed per code requirements.	
Insulation	Min. 1 ¹ / ₂ " (38 mm) Mineral Fiber Insulation, Min. 2.8 PCF
Installed adjacent to the bottom flange of the I-joist and supported by the resilient channels. The ends of the batts shall be centered over resilient channels.	
Structural Members	Min. 9 ¹ / ₂ " (241 mm) Deep Joists
Maximum 24" (610 mm) on center spacing. Minimum flange dimensions of 1 ¹ / ₂ " (38 mm) thick by 3 ¹ / ₂ " (89 mm) wide.	
Resilient Channels	Min. 0.019" (0.5 mm) Galvanized Resilient Channel
Attached perpendicular to the bottom flange of the joist with 1 ⁵ / ₈ " (41 mm) Type S drywall screws. Channels are spaced a maximum of 16" (406 mm) on center and doubled at each wallboard end joint extending to the next joist beyond each joint.	
Ceiling	One (1) Layer of 5/8" (16 mm) Type C Gypsum Wallboard
Installed with long dimension perpendicular to resilient channels and fastened with minimum 1 ¹ / ₈ " (29 mm) Type S drywall screws spaced at 12" (305 mm) on center on intermediate joists and 8" (203 mm) on center at end joints. The end joints of the wallboard must be staggered the equivalent of two joist spacings with those of adjacent sheets.	
Finish: The face layer joints must be covered with tape and coated with joint compound. Screw heads must also be covered with joint compound.	

Sound Rating⁽¹⁾

Components	STC	IIC
Base Assembly with cushioned vinyl	51	46
Base Assembly with carpet and padding	50	64
Base Assembly with cushioned vinyl, gypsum concrete	60	50
Base Assembly with carpet and padding, gypsum concrete	60	65

(1) Sound ratings from the American Wood Council publication Design for Code Acceptance (DCA) 3. Available from <http://www.awc.org>

REFERENCE

BCI® 90 Joists

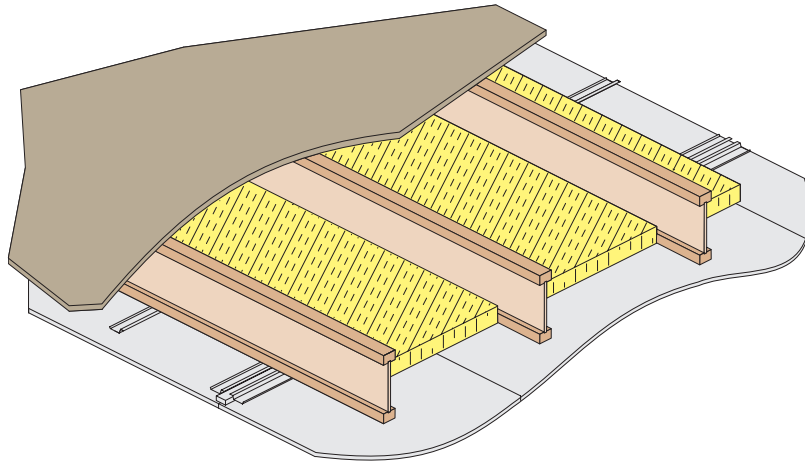
- ▶ 2021 IBC® Table 721.1(3), Item Num. 25-11
- ▶ 2020 NBCC Table A-9.10.3.1.B., Assembly Num. F10, F14, and F20
- ▶ DCA 3, WIJ-1.2
- ▶ ICC-ES/APA ESR-1336, Figure 5, and APA PR-S201 FR5

AJS® 25/30 Joists

- ▶ 2021 IBC® Table 721.1(3), Item Num. 25-11
- ▶ 2020 NBCC Table A-9.10.3.1.B., Assembly Num. F10, F14, and F20
- ▶ DCA 3, WIJ-1.2
- ▶ APA PR-S201 FR5

One-Hour Fire Resistance Rated Floor and Roof Assemblies

One Layer 5/8" Type C Gypsum Wallboard and Strips — BCI® 90 and AJS® 25/30 Joists



Base Assembly

Component	Material Specification
Floor Topping (Optional)	Varies
Reference sound ratings if applicable	
Floor Sheathing	Min. 23/32" (18 mm) Wood Structural Panel
A modified contact construction adhesive must be applied to the top of the joists prior to placing sheathing. The sheets shall be installed with their long edge perpendicular to the joists with end joists centered over the top flange of joists and staggered one joist spacing with adjacent sheets. Floor sheathing must be installed per code requirements.	
Insulation (Optional)	Min. 1½" (38 mm) Mineral Fiber Insulation, Min. 3.5 PCF
Installed adjacent to the bottom flange of the I-Joist and supported by the resilient channels. The ends of the batts shall be centered over resilient channels.	
Structural Members	Min. 9½" (241 mm) Deep Joists
Maximum 24" (610 mm) on center spacing. Minimum flange dimensions of 1½" (38 mm) thick by 3½" (89 mm) wide.	
Resilient Channels (Optional)	Min. 0.019" (0.5 mm) Galvanized Resilient Channel
Attached perpendicular to the bottom flange of the I-Joist with 1¼" (32mm) Type W drywall screws. Channels are spaced a maximum of 16" (406 mm) on center and doubled at each wallboard end joint extending to the next joist beyond each joint	
Gypsum Strips	2" (51 mm) x ½" (13 mm) Gold Bond Brand Fire-Shield C Gypsum Wallboard
Installed perpendicular to the joists above each end joint of the 5/8" (16 mm) gypsum wallboard. The strips are attached with one 1¼" (32 mm) Type W drywall screw at each joist.	
Ceiling	(2) Layers of 5/8" (16 mm) Type X Gypsum Wallboard
Installed with long dimension perpendicular to resilient channels and fastened with minimum 1½" (29 mm) Type S drywall screws spaced at 8" (203 mm) on center. The end joints of the wallboard must be staggered the equivalent of two joist spacings with those of adjacent sheets.	
Finish: The face layer joints must be covered with tape and coated with joint compound. Screw heads must also be covered with joint compound	

Sound Rating (with Resilient Channel)

Components	STC	IIC
Base Assembly with carpet and padding	55	62
Base Assembly with cushioned vinyl, ¾" gypsum concrete	58	45
Base Assembly with cushioned vinyl, gypsum concrete and ¼" Acousti-Mat II	61	53

REFERENCE

BCI® 90 Joists

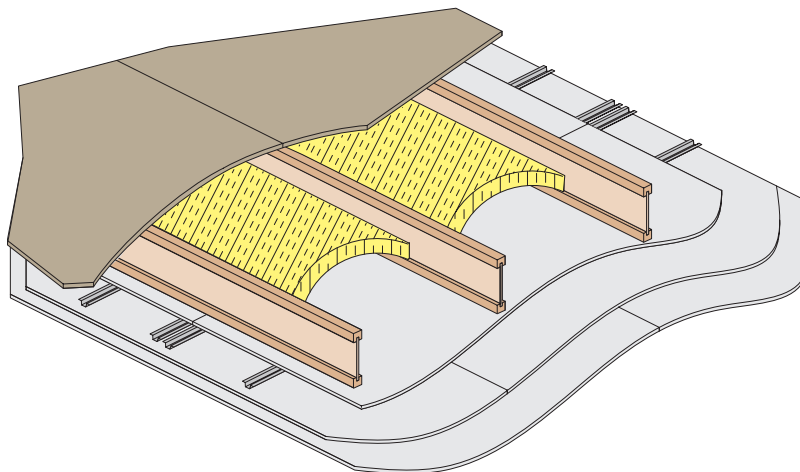
► ICC-ES/APA ESR-1336 and APA PR-S201 FR6

AJS® 25/30 Joists

► APA PR-S201 FR6

Two-Hour Fire Resistance Rated Floor and Roof Assemblies

Three Layers 5/8" Type C Gypsum Wallboard — BCI® and AJS® Joists



Base Assembly

Component	Material Specification
Floor Topping (Optional)	Varies
Reference sound ratings if applicable	
Floor Sheathing	Min. 23/32" (18 mm) Wood Structural Panel
A modified contact construction adhesive must be applied to the top of the joists prior to placing sheathing. The sheets shall be installed with their long edge perpendicular to the joists with end joists centered over the top flange of joists and staggered one joist spacing with adjacent sheets. Floor sheathing must be installed per code requirements.	
Insulation	Max 3 1/2" (89 mm) Unfaced Glass Fiber Insulation
Friction fitted between I-joists and supported by stay wires spaced 12" (305 mm) on center along the joist bottom flange.	
Structural Members	Min. 9 1/2" (241 mm) Deep Joists
Maximum 24" (610 mm) on center spacing. Minimum flange dimensions of 1 1/8" (29 mm) thick by 2" (51 mm) wide, BCI 5000 and larger series.	
Hat Channels	Min. 0.019" (0.5 mm) Hat Shaped Galvanized Steel Channels
Attached perpendicular to the bottom flange of the I-joist with 1 5/8" (41 mm) Type S drywall screws penetrating through the wallboard base layer into each joist flange. Channels are spaced a maximum of 16" (406 mm) on center and doubled at each wallboard end joint extending to the next joist beyond each joint.	
Ceiling	(3) Layers of 5/8" (16 mm) Type C Gypsum Wallboard
<p>Base Layer: Install with long dimension perpendicular to joist length. Attached to the bottom flange of the joists using 1 5/8" (41 mm) Type S drywall screws at 12" (305 mm) on center. The end joints of the wallboard must be centered on the bottom flange of the joist and must be staggered the equivalent of two joist spacings with those of adjacent sheets.</p> <p>Middle Layer: Attach to furring channels using 1" (25 mm) Type S drywall screws at 12" (305 mm) on center with the long dimension perpendicular to furring channels. End joints must be staggered from end joints of adjacent sheets and end joints on the face layer.</p> <p>Face Layer: Attach to furring channels through the middle layer using 1 5/8" (41 mm) Type S drywall screws spaced at 8" (203 mm) on center with long dimension perpendicular to furring channel. End joints must be staggered from end joints of adjacent sheets and staggered 32" (813 mm) end joints on the middle layer. Edge joints (long dimension) must be offset 24" (610 mm) from those of the middle layer.</p> <p>Finish: The face layer joints must be covered with tape and coated with joint compound. Screw heads must also be covered with joint compound.</p>	

Sound Rating^{(1),(2)}

Components	STC	IIC
Base Assembly with carpet and padding	49	54
Base Assembly with cushioned vinyl, gypsum concrete	58	45
Base Assembly with carpet and padding, gypsum concrete	58	64

(1) Sound ratings from the American Wood Council publication Design for Code Acceptance (DCA) 3. Available from <http://www.awc.org>.

(2) STC and IIC values are based on engineering analysis performed by David L. Adams Associates, Inc.

REFERENCE

BCI® Joists

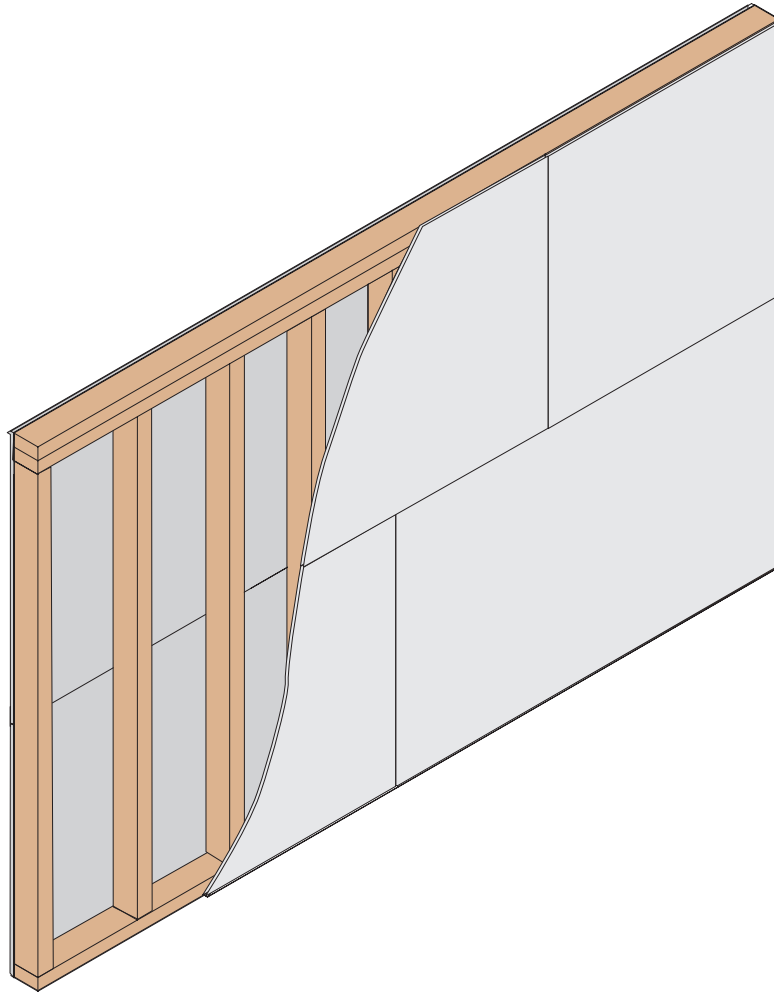
- ▶ 2021 IBC® Table 721.1(3), Item Number 28-1.1
- ▶ ICC-ES/APA ESR-1336 and APA PR-S201 FR7

AJS® Joists

- ▶ 2021 IBC® Table 721.1(3), Item Number 28-1.1
- ▶ APA PR-S201 FR7

One-Hour Fire Resistance Rated Wall Assemblies

One Layer 5/8" Type X Gypsum Wallboard — Versa-Lam® LVL



Base Assembly

Component	Material Specification
Structural Members	Min. 1½ inch (28mm) X 5½ inch (140mm) Versa-Lam® LVL
<p>Studs spaced no greater than 16" (406 mm) on center. For prescriptive wall systems Versa-Lam® LVL may be used as a direct replacement of solid-sawn studs. For engineered wall systems the axial compressive stress of an individual stud must not exceed the least of the following:</p> <ul style="list-style-type: none"> ▶ 525 psi (3620 kPa) (limitation associated with compression perpendicular to grain of Versa-Lam® LVL sill plate). ▶ $0.46F_c'$, where F_c' is the compression design value parallel to grain, adjusted by all applicable adjustment factors in accordance with the NDS, including the column stability factor, C_p. 	
Insulation (Optional)	Varies
Fitted between studs	
Interior Membrane	One (1) Layer of 5/8" (16 mm) Type X Gypsum Wallboard
<p>Applied horizontally or vertically with vertical joints over studs. Attached with 2¼" (57 mm) Type S or Type W drywall screws spaced 7" (178 mm) on center along each stud.</p> <p>Finish: The gypsum wallboard joints must be covered with tape and coated with joint compound. Screw heads must also be covered with joint compound.</p>	
Exterior Membrane	One (1) Layer of 5/8" (16 mm) Type X Gypsum Wallboard
<p>Applied horizontally or vertically with vertical joints over studs. Attached with 2¼" (57 mm) Type S or Type W drywall screws spaced 7" (178 mm) on center along each stud.</p> <p>Finish: The gypsum wallboard joints must be covered with tape and coated with joint compound. Screw heads must also be covered with joint compound.</p>	

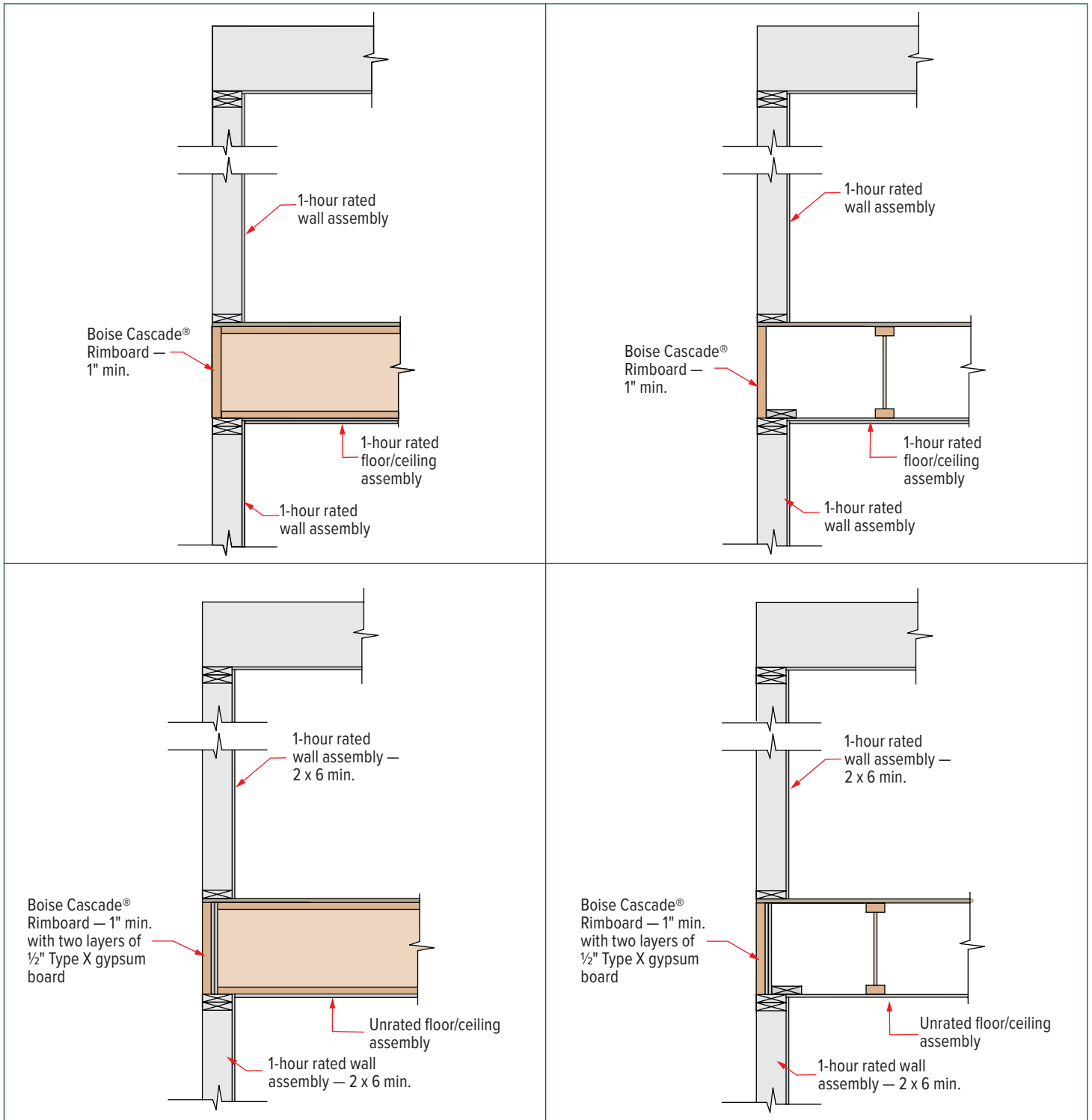
REFERENCE

Versa-Lam® LVL

- ▶ 2021 IBC® Table 720.1(32), Item Number 15-1.14
- ▶ ICC-ES/APA ESR-1040

One-Hour Fire Resistance Rated Rim Board Assemblies

End Wall Application

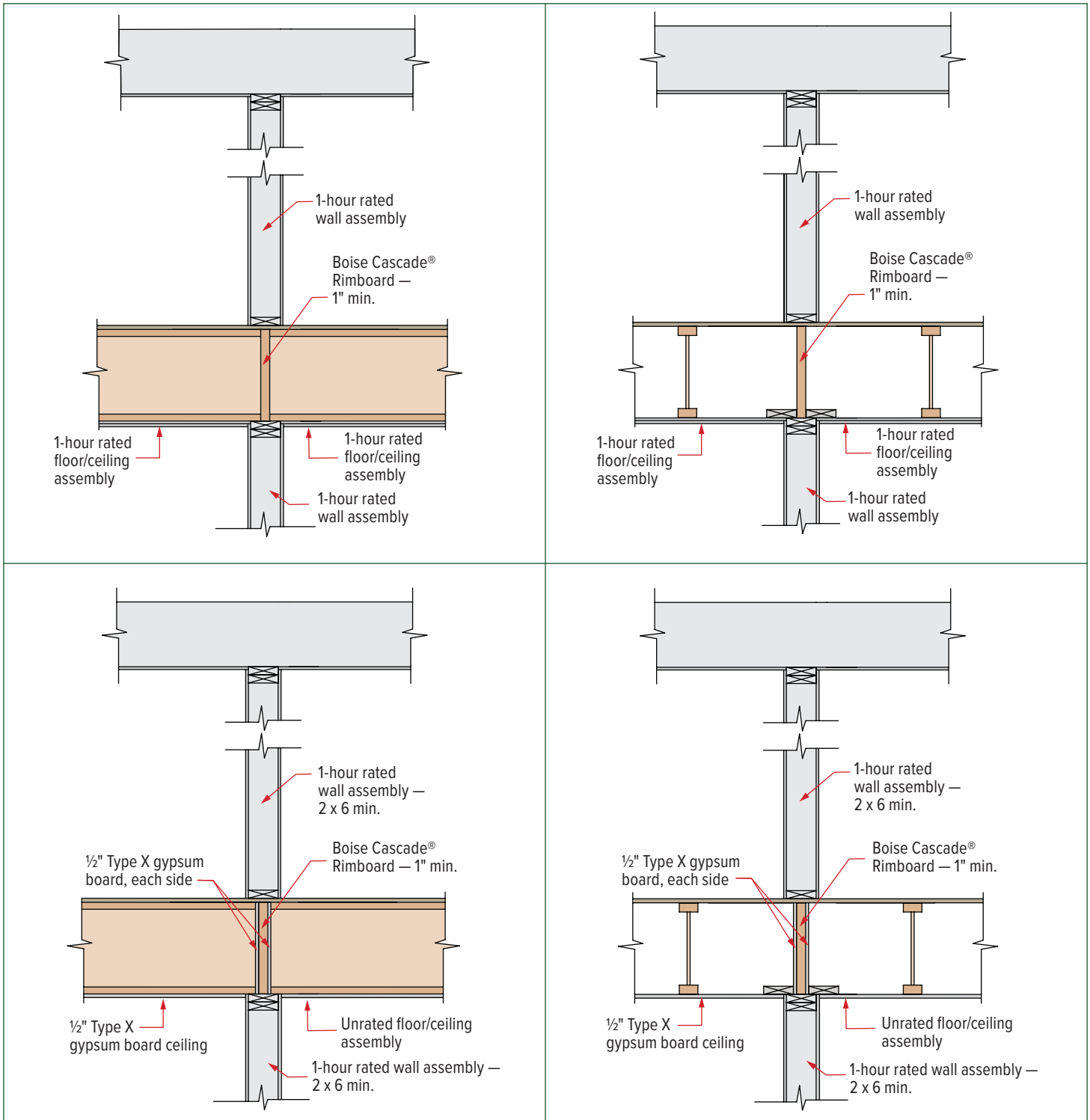


NOTES

- ▶ Rim assembly for fire from inside of structure.
- ▶ Gypsum wallboard shown on the ceiling is to protect the rim board only; it does not necessarily cause the floor assembly to be rated.
- ▶ Attach 1/2" Type X to rim board with 1/2" Type W drywall screws spaced 12" o.c.
- ▶ Attach 5/8" Type X to rim board with 2" Type W drywall screws spaced 12" o.c.
- ▶ Provide minimum 1 3/4" bearing for I-joist.
- ▶ Use only fire-rated gypsum wallboard. Type C may be substituted for Type X.
- ▶ Rim board and gypsum wallboard thickness are shown as minimums. Thicker rim board and gypsum wallboard may be substituted.
- ▶ Rim board needs to be sized for vertical and lateral load.
- ▶ Details per APA PR-S201 RB1. Compliance of the fire-resistance rated construction assemblies with applicable building code is the responsibility of the design professional of record and/or authority having jurisdiction.

One-Hour Fire Resistance Rated Rim Board Assemblies

Interior Single Wall Application

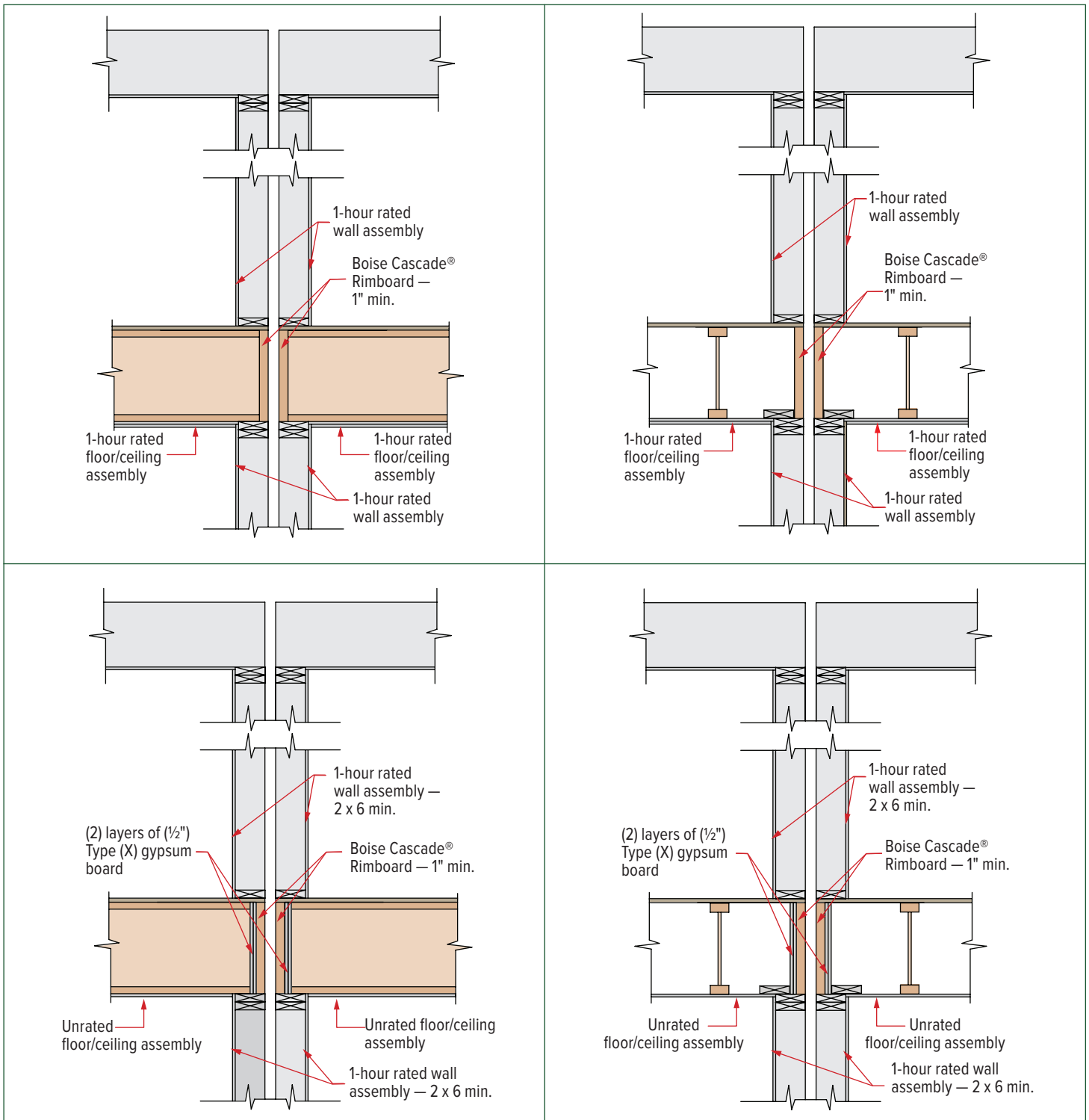


NOTES

- ▶ Rim assembly for fire from either side of wall.
- ▶ Gypsum wallboard shown on the ceiling is to protect the rim board only; it does not necessarily cause the floor assembly to be rated.
- ▶ Attach 1/2" Type X to rim board with 1/2" Type W drywall screws spaced 12" o.c.
- ▶ Attach 5/8" Type X to rim board with 2" Type W drywall screws spaced 12" o.c.
- ▶ Provide minimum 1 3/4" bearing for I-joint.
- ▶ Use only fire-rated gypsum wallboard. Type C may be substituted for Type X.
- ▶ Rim board and gypsum wallboard thickness are shown as minimums. Thicker rim board and gypsum wallboard may be substituted.
- ▶ When two layers of gypsum wallboard are used, I-joint end nails should be 16d box nails.
- ▶ Rim board needs to be sized for vertical and lateral load.
- ▶ Details per APA PR-S201 RB2. Compliance of the fire-resistance rated construction assemblies with applicable building code is the responsibility of the design professional of record and/or authority having jurisdiction.

One-Hour Fire Resistance Rated Rim Board Assemblies

Interior Double Wall Application

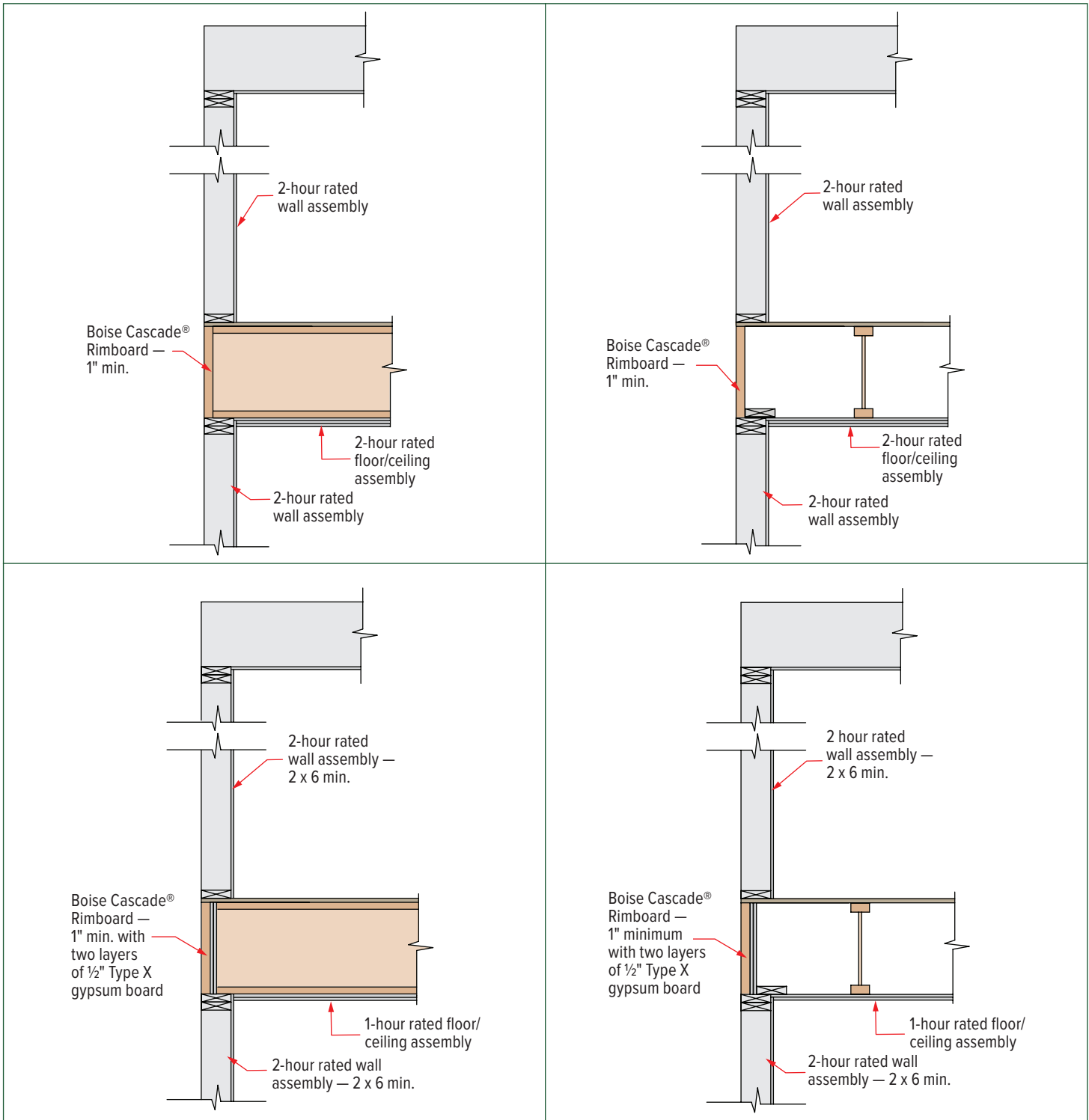


NOTES

- ▶ Rim assembly for fire from either side of wall.
- ▶ Gypsum wallboard shown on the ceiling is to protect the rim board only; it does not necessarily cause the floor assembly to be rated.
- ▶ Attach 1/2" Type X to rim board with 1/2" Type W drywall screws spaced 12" o.c.
- ▶ Attach 5/8" Type X to rim board with 2" Type W drywall screws spaced 12" o.c.
- ▶ Provide minimum 1 3/4" bearing for I-joint.
- ▶ Use only fire-rated gypsum wallboard. Type C may be substituted for Type X.
- ▶ Rim board and gypsum wallboard thickness are shown as minimums. Thicker rim board and gypsum wallboard may be substituted.
- ▶ When two layers of gypsum wallboard are used, I-joint end nails should be 16d box nails.
- ▶ Rim board needs to be sized for vertical and lateral load.
- ▶ Details per APA PR-S201 RB3. Compliance of the fire-resistance rated construction assemblies with applicable building code is the responsibility of the design professional of record and/or authority having jurisdiction.

Two-Hour Fire Resistance Rated Rim Board Assemblies

End Wall Application

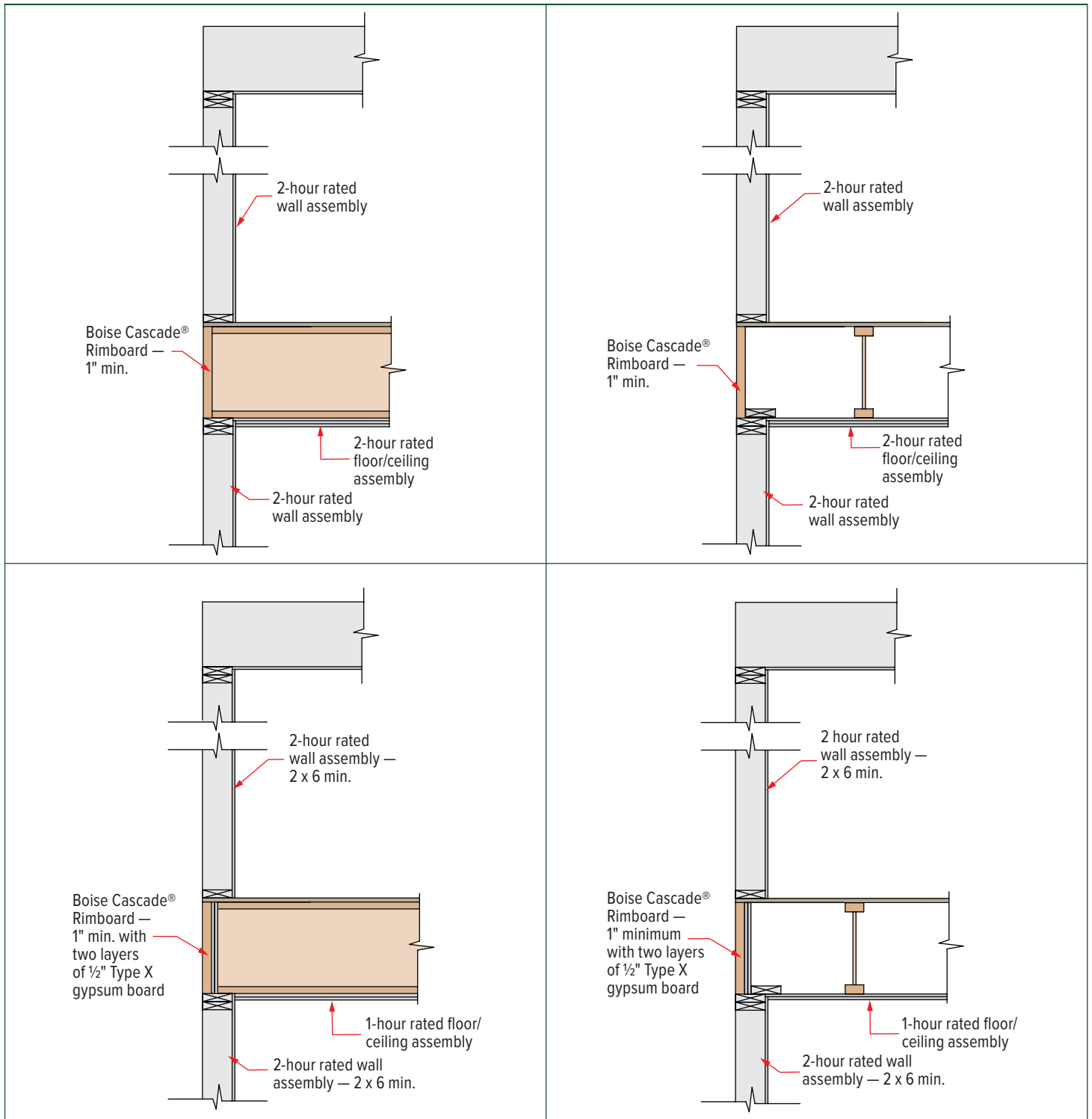


NOTES

- ▶ Rim assembly for fire from inside of structure.
- ▶ Gypsum wallboard shown on the ceiling is to protect the rim board only; it does not necessarily cause the floor assembly to be rated.
- ▶ Attach ½" Type X to rim board with 1½" Type W drywall screws spaced 12" o.c.
- ▶ Attach ⅝" Type X to rim board with 2" Type W drywall screws spaced 12" o.c.
- ▶ Provide minimum 1¾" bearing for I-joist.
- ▶ Use only fire-rated gypsum wallboard. Type C may be substituted for Type X.
- ▶ Rim board and gypsum wallboard thickness are shown as minimums. Thicker rim board and gypsum wallboard may be substituted.
- ▶ Rim board needs to be sized for vertical and lateral load.
- ▶ Details per APA PR-S201 RB1. Compliance of the fire-resistance rated construction assemblies with applicable building code is the responsibility of the design professional of record and/or authority having jurisdiction.

Two-Hour Fire Resistance Rated Rim Board Assemblies

Interior Double Wall Application

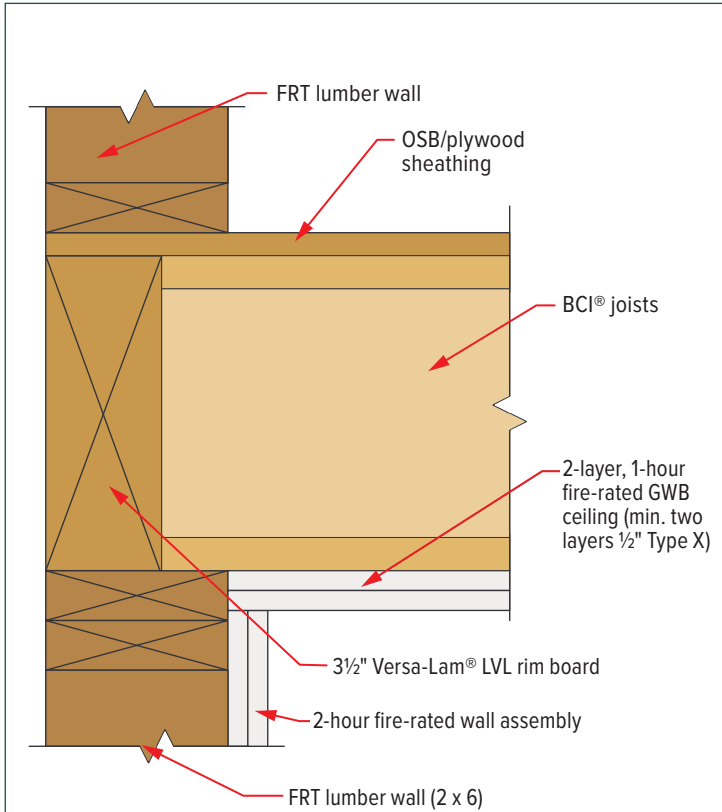


NOTES

- ▶ Rim assembly for fire from either side of wall.
- ▶ Gypsum wallboard shown on the ceiling is to protect the rim board only; it does not necessarily cause the floor assembly to be rated.
- ▶ Attach 1/2" Type X to rim board with 1 1/2" Type W drywall screws spaced 12" o.c.
- ▶ Attach 5/8" Type X to rim board with 2" Type W drywall screws spaced 12" o.c.
- ▶ Provide minimum 1 3/4" bearing for I-joist.
- ▶ Use only fire-rated gypsum wallboard. Type C may be substituted for Type X.
- ▶ Rim board and gypsum wallboard thickness are shown as minimums. Thicker rim board and gypsum wallboard may be substituted.
- ▶ When two layers of gypsum wallboard are used, I-joist end nails should be 16d box nails.
- ▶ Rim board needs to be sized for vertical and lateral load.
- ▶ Details per APA PR-S201 RB3. Compliance of the fire-resistance rated construction assemblies with applicable building code is the responsibility of the design professional of record and/or authority having jurisdiction.

Type IIIA Construction Wall / Floor Intersection Details

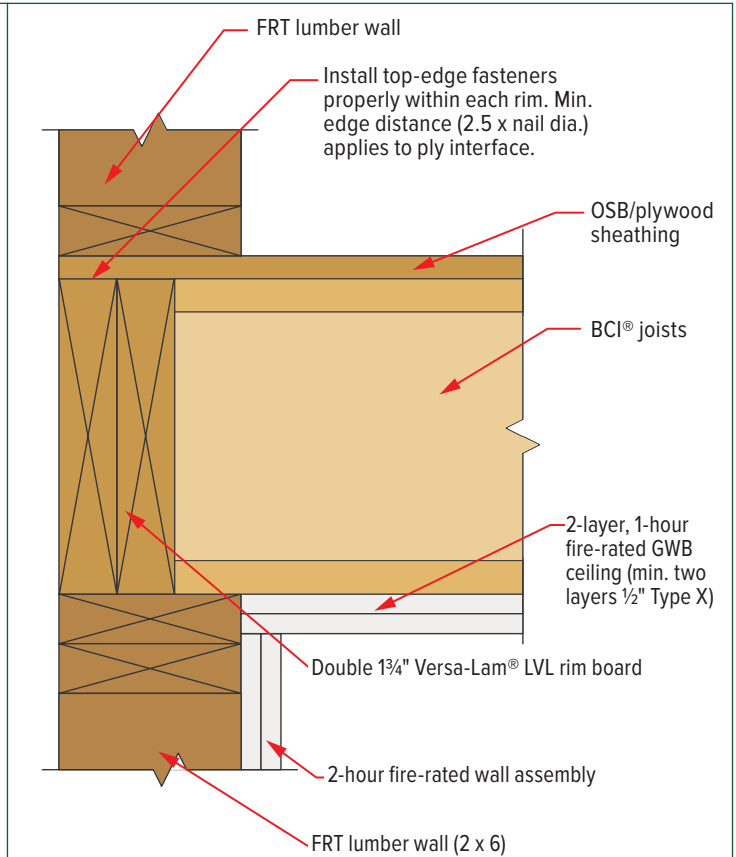
3½" Versa-Lam® LVL Rim / One-Hour Fire-Rated Ceiling



NOTES

- Fire resistance for exposure from interior side: Two layer ceiling plus additional 1¾" sacrificial wood thickness in rim member provides at least 120 minutes protection per 2024 NDS Chapter 16. Remaining portion of Versa-Lam® LVL rim board supports the load from the wall above, vertical uniform capacity = 5700 lb/ft (16" max depth).
- Fire resistance for exposure from exterior side: Where required per IBC Section 705.5, a combination of exterior fire protection and FRTW sheathing (not shown), and a portion of the rim board thickness is used to provide 120 minutes of protection. Remaining portion of Versa-Lam® LVL rim board supports the load from the wall above.
- Detail based upon AWC DCA3 Fire-Resistance Rated Wood-Frame Wall and Floor/Ceiling Assemblies, February 2021, Figure 1C. Submit detail to authority having jurisdiction for review.
- BCI joists shall be protected from moisture exposure before and during installation.

Double Versa-Lam® LVL Rim / One-Hour Fire-Rated Ceiling

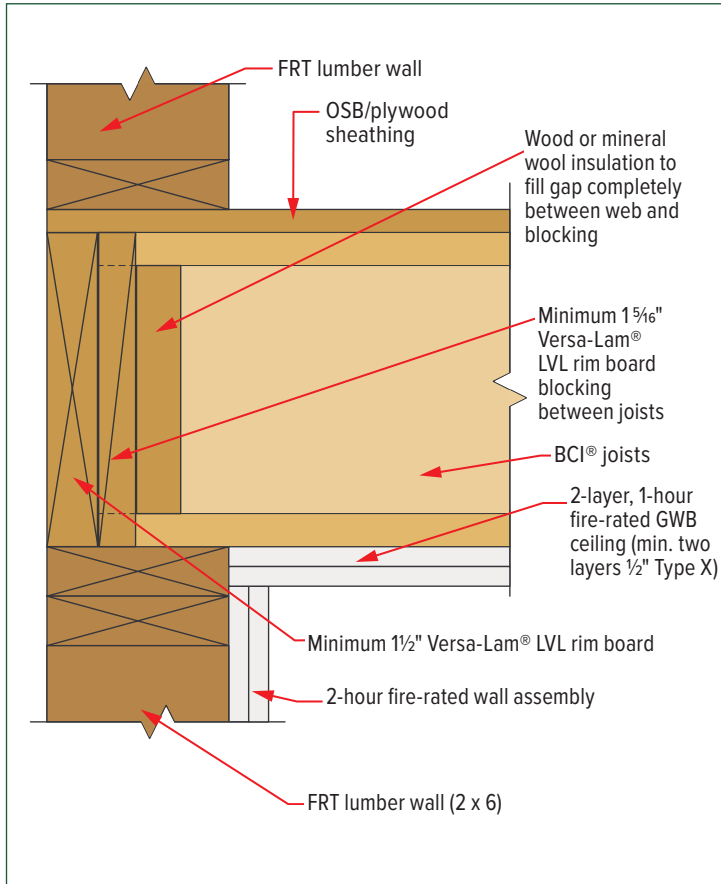


NOTES

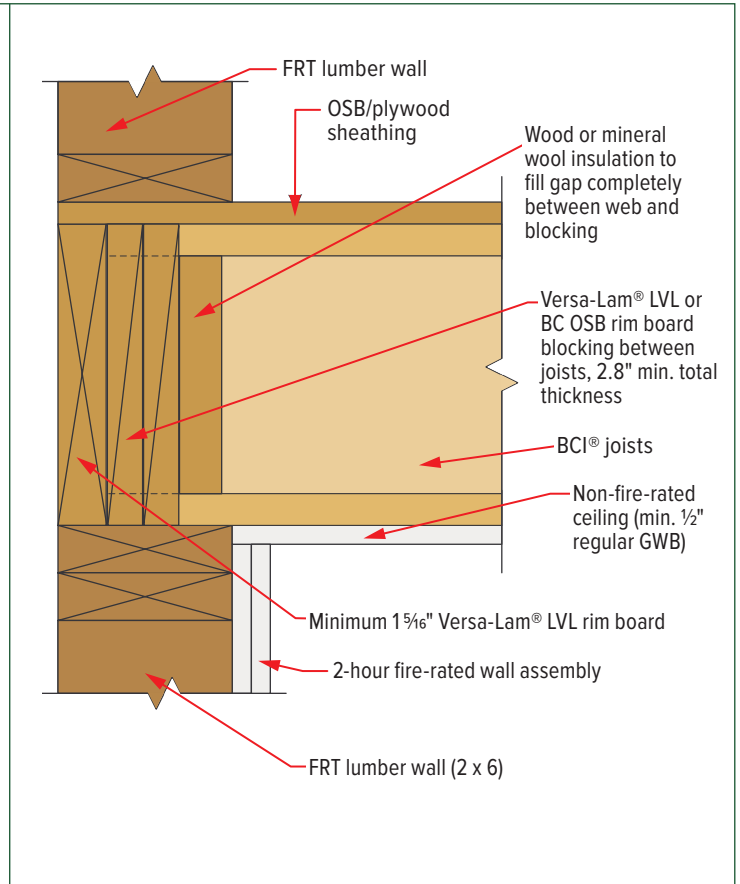
- Fire resistance for exposure from interior side: Two layer ceiling plus additional 2" sacrificial rim thickness provides at least 120 minutes protection per 2024 NDS Chapter 16. Remaining portion of Versa-Lam® LVL rim board supports the load from the wall above, vertical uniform capacity = 4250 lb/ft (16" max depth).
- Fire resistance for exposure from exterior side: Where required per IBC Section 705.5, a combination of exterior fire protection and FRTW sheathing (not shown), and a portion of the rim board thickness is used to provide 120 minutes of protection. Remaining portion of Versa-Lam® LVL rim board supports the load from the wall above.
- Detail based upon AWC DCA3 Fire-Resistance Rated Wood-Frame Wall and Floor/Ceiling Assemblies, February 2021, Figure 1B. Submit detail to authority having jurisdiction for review.
- BCI joists shall be protected from moisture exposure before and during installation.

Type IIIA Construction Wall / Floor Intersection Details

Versa-Lam® LVL Rim and Blocking / One-Hour Fire-Rated Ceiling



Versa-Lam® LVL Rim and Blocking / Non Fire-Rated Ceiling



NOTES

- ▶ Fire resistance for exposure from interior side: Two layer ceiling plus additional 1 3/4" sacrificial wood thickness in rim member provides at least 120 minutes protection per 2024 NDS Chapter 16. Versa-Lam® LVL rim board supports the load from the wall above, sized per lateral and vertical load requirements.
- ▶ Fire resistance for exposure from exterior side: Where required per IBC Section 705.5, a combination of exterior fire protection and FRTW sheathing (not shown), and a portion of the rim board thickness is used to provide 120 minutes of protection. Blocking supports the load from the wall above.
- ▶ Detail based upon AWC DCA3 Fire-Resistance Rated Wood-Frame Wall and Floor/Ceiling Assemblies, February 2021, Figure 1A. Submit detail to authority having jurisdiction for review.
- ▶ BCI joists shall be protected from moisture exposure before and during installation.

NOTES

- ▶ Fire resistance for exposure from interior side: Total 2.8" thick blocking for sacrificial wood thickness provides at least 120 minutes protection per 2024 NDS Chapter 16. Versa-Lam® LVL rim board supports the load from the wall above, sized per lateral and vertical load requirements.
- ▶ Fire resistance for exposure from exterior side: Where required per IBC Section 705.5, a combination of exterior fire protection and FRTW sheathing (not shown), and a portion of the rim board thickness is used to provide 120 minutes of protection. Blocking supports the load from the wall above.
- ▶ Detail based upon AWC DCA3 Fire-Resistance Rated Wood-Frame Wall and Floor/Ceiling Assemblies, February 2021, Figure 2. Submit detail to authority having jurisdiction for review.
- ▶ BCI joists shall be protected from moisture exposure before and during installation.

Sprinkler Attachments

Introduction

Sprinkler systems provide reliable and effective suppression against fire. Though typically used in commercial-type buildings, sprinkler systems are also being installed in residential construction. Consult with the local building official for further information on sprinkler requirements. The details shown on pages 20-23 refer to the proper connection of commercial sprinkler pipe to Boise Cascade I-joists. Connections to Versa-Lam® LVL and BOISE GLULAM® beams are similar to those used with solid-sawn lumber. Sprinkler pipe may also be routed through webs of Boise Cascade I-joists; please refer to the specific joist's hole chart on pages 24-25. Brackets, fixtures, and hangers shown in the sprinkler attachment details are referenced to the National Fire Protection Association (NFPA), an international, non-

profit organization who publishes fire code and standards recognized worldwide.

The following details may be used for residential sprinklers but it should be noted that residential systems typically use much lighter and smaller pipe. The 2" diameter and smaller pipes used in residential sprinkler systems may bear directly on the joist web when routed through web holes. Residential sprinkler attachment details are shown on page 23.

Commercial Sprinkler Pipe Weight

The weight of water-filled sprinkler pipe shall be added to the dead load of the joist or beam design. The following tables provide weights of typical commercial sprinkler pipe.

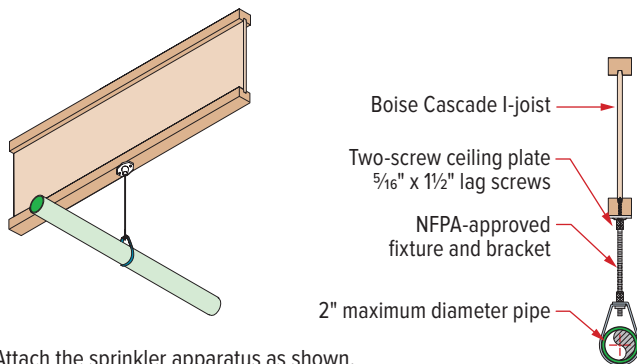
Water-Filled Sprinkler Pipe Weight

Schedule #40 Steel Pipe	
Pipe Size [diameter — in]	Total Weight [lb/ft]
1	2.1
1.5	3.6
2	5.1
2.5	7.9
3	10.8
3.5	13.4
4	16.3
5	23.3
6	31.5

Schedule #10 Steel Pipe	
Pipe Size [diameter — in]	Total Weight [lb/ft]
1.25	2.5
1.5	3.0
2	4.2
2.5	5.9
3	7.9
4	11.8
6	23.0

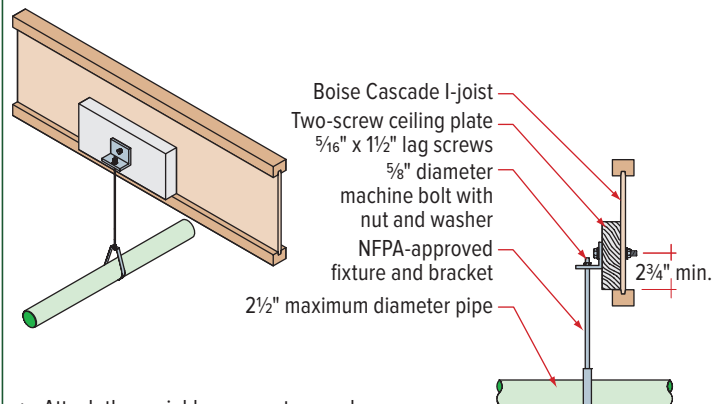
Sprinkler Attachment Details FS01 – FS03

FS01 Two-Screw Ceiling Flange — 2" Maximum Pipe Size



- ▶ Attach the sprinkler apparatus as shown.
- ▶ Pre-drill pilot holes for lag screws.
- ▶ The sprinkler apparatus — including the hanger, brackets, hanger rod, pipe, clamps, nuts, bolts, washers, lag screws, wood screws — and installation shall be per the current provisions of the NFPA 13, 13D, 13R, or the authority having jurisdiction.
- ▶ The design of the Boise Cascade I-joist system shall also include the weight of the piping system and temporary loading.

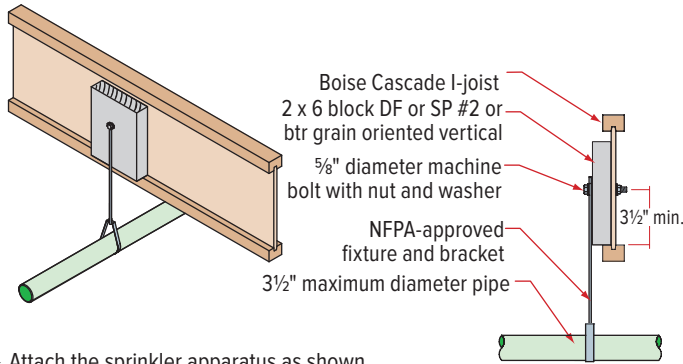
FS03 Side Beam Bracket — 2½" Maximum Pipe Size



- ▶ Attach the sprinkler apparatus as shown.
- ▶ The sprinkler apparatus — including the hanger, brackets, hanger rod, pipe, clamps, nuts, bolts, washers, lag screws, wood screws — and installation shall be per the current provisions of the NFPA 13, 13D, 13R, or the authority having jurisdiction.
- ▶ The design of the Boise Cascade I-joist system shall also include the weight of the piping system and temporary loading.

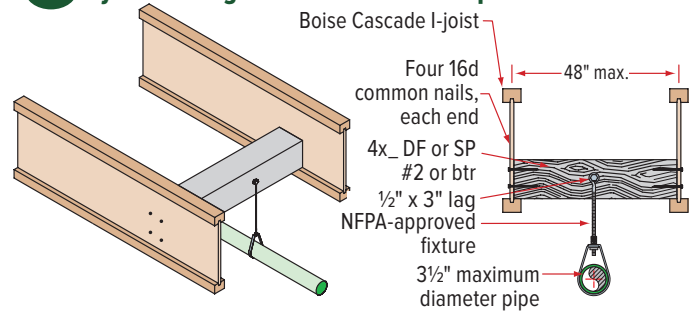
Sprinkler Attachment Details FS04 – FS11

FS04 Eye Rod Hanger — 3½" Maximum Pipe Size



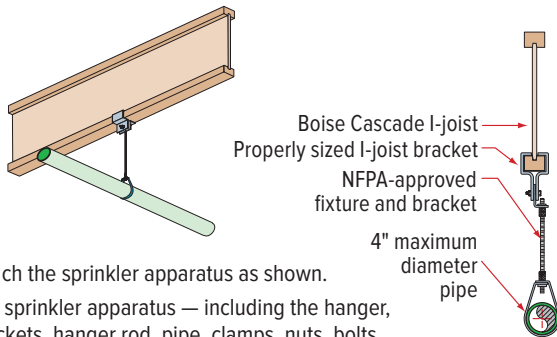
- ▶ Attach the sprinkler apparatus as shown.
- ▶ The sprinkler apparatus — including the hanger, brackets, hanger rod, pipe, clamps, nuts, bolts, washers, lag screws, wood screws — and installation shall be per the current provisions of the NFPA 13, 13D, 13R, or the authority having jurisdiction.
- ▶ The design of the Boise Cascade I-joist system shall also include the weight of the piping system and temporary loading.

FS06 Eye Rod Hanger — 3½" Maximum Pipe Size



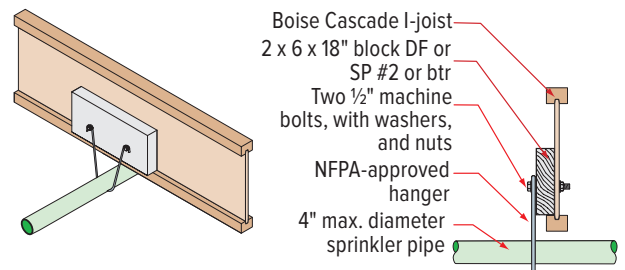
- ▶ Attach the sprinkler apparatus as shown.
- ▶ The sprinkler apparatus — including the hanger, brackets, hanger rod, pipe, clamps, nuts, bolts, washers, lag screws, wood screws — and installation shall be per the current provisions of the NFPA 13, 13D, 13R, or the authority having jurisdiction.
- ▶ The design of the Boise Cascade I-joist system shall also include the weight of the piping system and temporary loading.
- ▶ Pre-drill pilot hole for lag screws. Allow for proper clearance from the lag to the bottom of the blocking: 2½" for branch lines, 3" for main lines.

FS07 I-joist Hanger — 4" Maximum Pipe Size



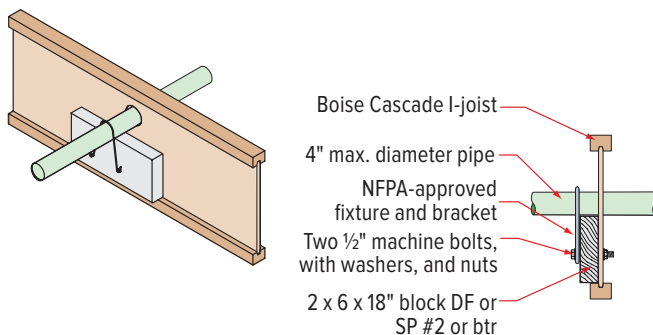
- ▶ Attach the sprinkler apparatus as shown.
- ▶ The sprinkler apparatus — including the hanger, brackets, hanger rod, pipe, clamps, nuts, bolts, washers, lag screws, wood screws — and installation shall be per the current provisions of the NFPA 13, 13D, 13R, or the authority having jurisdiction.
- ▶ The design of the Boise Cascade I-joist system shall also include the weight of the piping system and temporary loading.

FS08 U Hanger — 4" Maximum Pipe Size



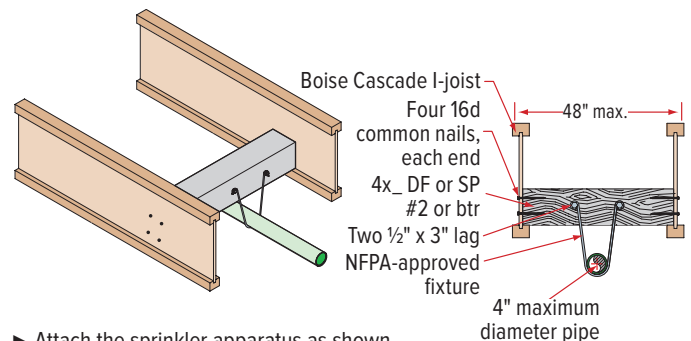
- ▶ Attach the sprinkler apparatus as shown.
- ▶ The sprinkler apparatus — including the hanger, brackets, hanger rod, pipe, clamps, nuts, bolts, washers, lag screws, wood screws — and installation shall be per the current provisions of the NFPA 13, 13D, 13R, or the authority having jurisdiction.
- ▶ The design of the Boise Cascade I-joist system shall also include the weight of the piping system and temporary loading.

FS09 Inverted U Hanger — 4" Maximum Pipe Size



- ▶ Attach the sprinkler apparatus as shown.
- ▶ The sprinkler apparatus — including the hanger, brackets, hanger rod, pipe, clamps, nuts, bolts, washers, lag screws, wood screws — and installation shall be per the current provisions of the NFPA 13, 13D, 13R, or the authority having jurisdiction.
- ▶ The design of the Boise Cascade I-joist system shall also include the weight of the piping system and temporary loading.

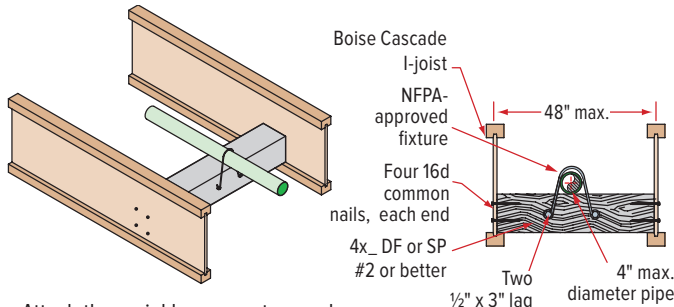
FS11 U Hanger — 4" Maximum Pipe Size



- ▶ Attach the sprinkler apparatus as shown.
- ▶ The sprinkler apparatus — including the hanger, brackets, hanger rod, pipe, clamps, nuts, bolts, washers, lag screws, wood screws — and installation shall be per the current provisions of the NFPA 13, 13D, 13R, or the authority having jurisdiction.
- ▶ The design of the Boise Cascade I-joist system shall also include the weight of the piping system and temporary loading.
- ▶ Pre-drill pilot hole for lag screws. Allow for proper clearance from the lag to the bottom of the blocking: 2½" for branch lines, 3" for main lines.

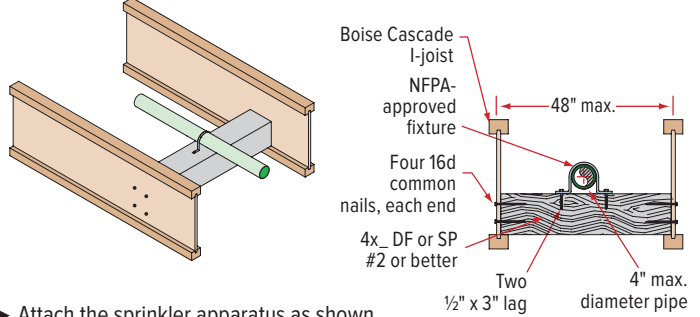
Sprinkler Attachment Details FS12 – FS17

FS12 Inverted U Hanger — 4" Maximum Pipe Size



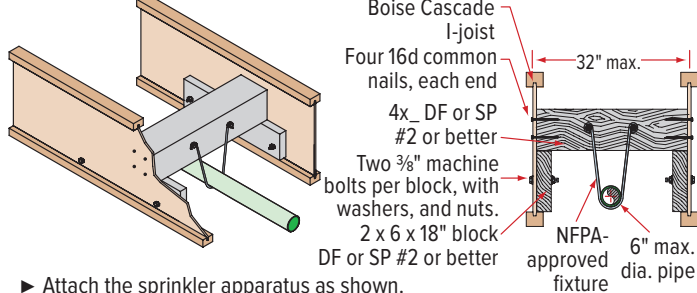
- ▶ Attach the sprinkler apparatus as shown.
- ▶ The sprinkler apparatus — including the hanger, brackets, hanger rod, pipe, clamps, nuts, bolts, washers, lag screws, wood screws — and installation shall be per the current provisions of the NFPA 13, 13D, 13R, or the authority having jurisdiction.
- ▶ The design of the Boise Cascade I-joist system shall also include the weight of the piping system and temporary loading.
- ▶ Pre-drill pilot hole for lag screws. Allow for proper clearance from the lag to the bottom of the blocking: 2½" for branch lines, 3" for main lines.

FS13 Pipe Strap — 4" Maximum Pipe Size



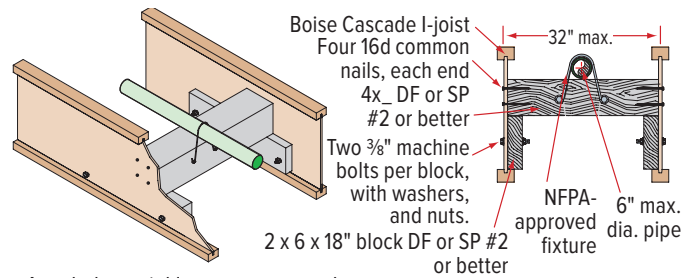
- ▶ Attach the sprinkler apparatus as shown.
- ▶ The sprinkler apparatus — including the hanger, brackets, hanger rod, pipe, clamps, nuts, bolts, washers, lag screws, wood screws — and installation shall be per the current provisions of the NFPA 13, 13D, 13R, or the authority having jurisdiction.
- ▶ The design of the Boise Cascade I-joist system shall also include the weight of the piping system and temporary loading.
- ▶ Pre-drill pilot hole for lag screws. Allow for proper clearance from the lag to the bottom of the blocking: 2½" for branch lines, 3" for main lines.

FS14 U Hanger — 6" Maximum Pipe Size



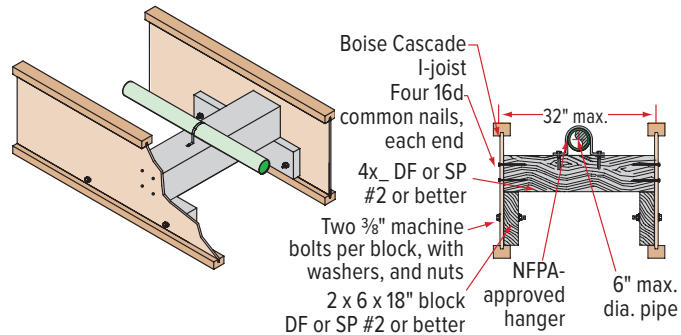
- ▶ Attach the sprinkler apparatus as shown.
- ▶ The sprinkler apparatus — including the hanger, brackets, hanger rod, pipe, clamps, nuts, bolts, washers, lag screws, wood screws — and installation shall be per the current provisions of the NFPA 13, 13D, 13R, or the authority having jurisdiction.
- ▶ The design of the Boise Cascade I-joist system shall also include the weight of the piping system and temporary loading.
- ▶ Pre-drill pilot hole for lag screws. Allow for proper clearance from the lag to the bottom of the blocking: 2½" for branch lines, 3" for main lines.

FS15 Inverted U Hanger — 6" Maximum Pipe Size



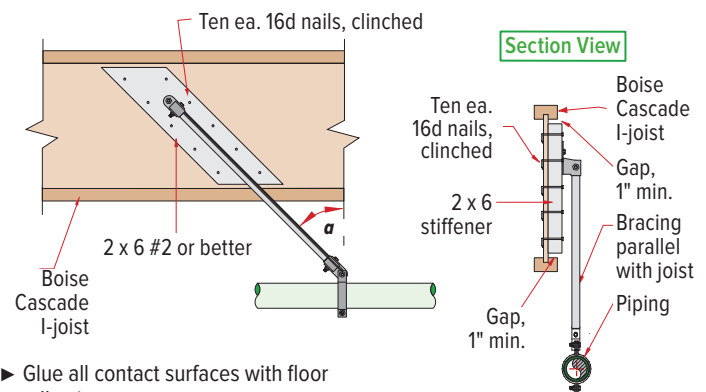
- ▶ Attach the sprinkler apparatus as shown.
- ▶ The sprinkler apparatus — including the hanger, brackets, hanger rod, pipe, clamps, nuts, bolts, washers, lag screws, wood screws — and installation shall be per the current provisions of the NFPA 13, 13D, 13R, or the authority having jurisdiction.
- ▶ The design of the Boise Cascade I-joist system shall also include the weight of the piping system and temporary loading.
- ▶ Pre-drill pilot hole for lag screws. Allow for proper clearance from the lag to the bottom of the blocking: 2½" for branch lines, 3" for main lines.

FS16 Pipe Strap — 6" Maximum Pipe Size



- ▶ Attach the sprinkler apparatus as shown.
- ▶ The sprinkler apparatus — including the hanger, brackets, hanger rod, pipe, clamps, nuts, bolts, washers, lag screws, wood screws — and installation shall be per the current provisions of the NFPA 13, 13D, 13R, or the authority having jurisdiction.
- ▶ The design of the Boise Cascade I-joist system shall also include the weight of the piping system and temporary loading.
- ▶ Pre-drill pilot hole for lag screws. Allow for proper clearance from the lag to the bottom of the blocking: 2½" for branch lines, 3" for main lines.

FS17 Seismic Bracing Detail for Forces Parallel to Boise Cascade I-joists



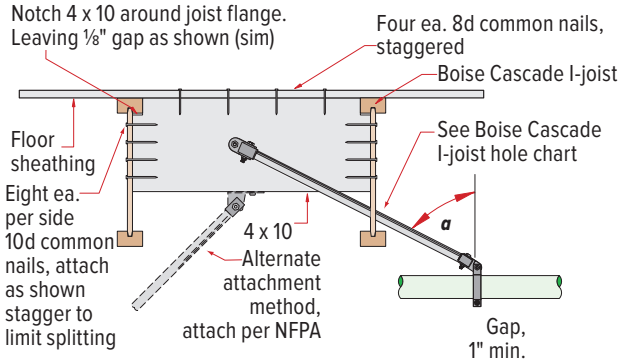
- ▶ Glue all contact surfaces with floor adhesive.
- ▶ Allowable loads shown represent only the capacity of the Boise Cascade I-joists. For sprinkler hanger apparatus capacities and connections, consult manufacturer or applicable version of NFPA 13.

Allowable Horizontal Seismic Forces (lbs.)

Angle to Vertical α	30°	45°	60°
	440	620	760

Sprinkler Attachment Details FS18 – FS19

FS18 Seismic Bracing Detail for Forces Parallel or Perpendicular to Boise Cascade I-joists for Pipe Bracing

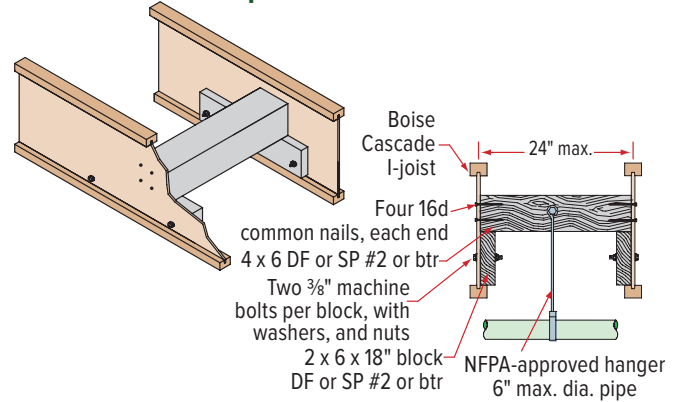


Allowable Horizontal Seismic Forces (lbs.)

Angle to Vertical α		
30°	45°	60°
390	600	600

- ▶ Glue all contact surfaces with floor adhesive.
- ▶ Allowable loads shown represent only the capacity of the Boise Cascade I-joists. For sprinkler hanger apparatus capacities and connections, consult manufacturer or applicable version of NFPA 13.

FS19 Blocking Attachment to Joist Hanger Attachment Varies – 6" Maximum Pipe Size

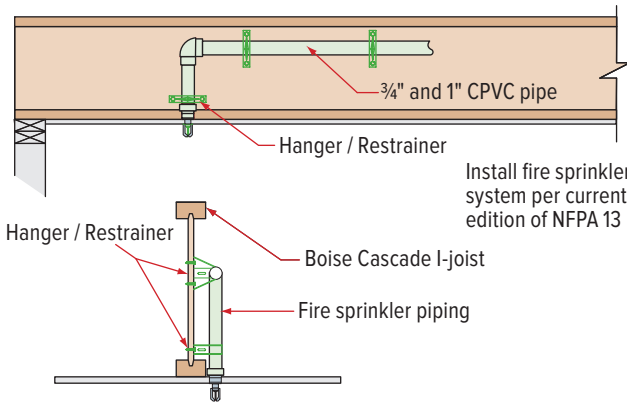


- ▶ Attach the sprinkler apparatus as shown.
- ▶ The sprinkler apparatus — including the hanger, brackets, hanger rod, pipe, clamps, nuts, bolts, washers, lag screws, wood screws — and installation shall be per the current provisions of the NFPA 13, 13D, 13R, or the authority having jurisdiction.
- ▶ The design of the Boise Cascade I-joist system shall also include the weight of the piping system and temporary loading.
- ▶ Pre-drill pilot hole for lag screws. Allow for proper clearance from the lag to the bottom of the blocking: 2½" for branch lines, 3" for main lines.

For additional Boise Cascade I-Joist fire sprinkler attachment details, please contact Boise Cascade EWP engineering.

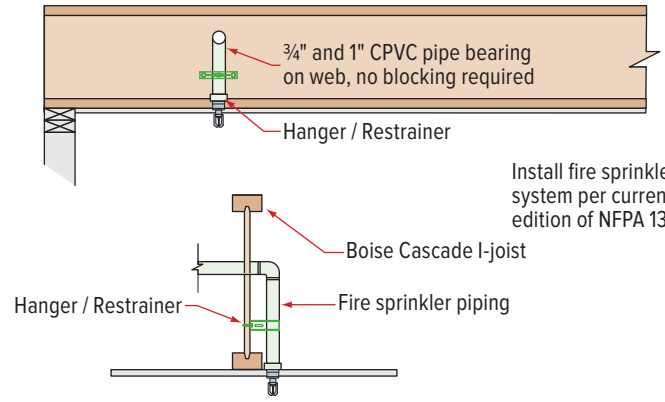
Residential Sprinkler Details (FS20 – FS21)

FS20 Residential Construction — Stand-off Hanger for CPVC Pipe



Install fire sprinkler system per current edition of NFPA 13

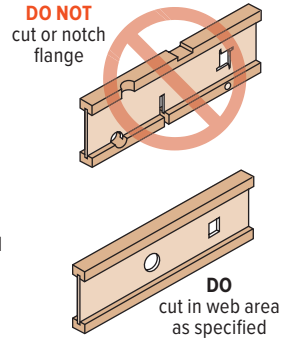
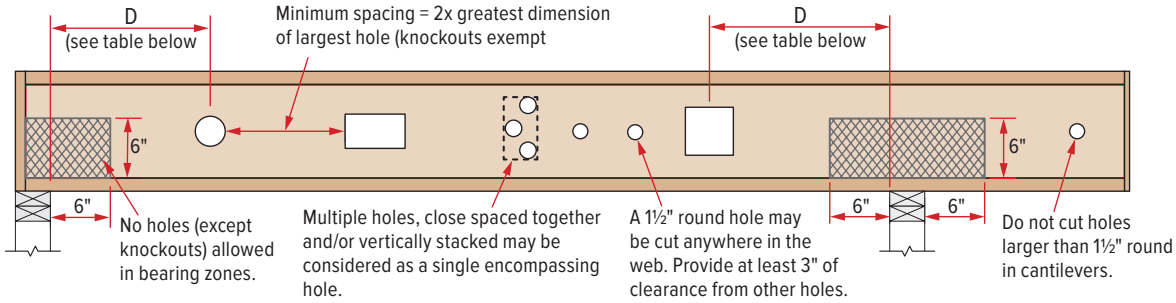
FS21 Residential Construction — Perpendicular to Joists for CPVC Pipe



Install fire sprinkler system per current edition of NFPA 13

Contact CPVC pipe manufacturer regarding installation and contact compatibility information

BCI Joist Hole Location and Sizing



BCI® joists are manufactured with 1½" round perforated knockouts in the web at approximately 12" o.c. Minimum distance from support, listed in table below, is required for all holes greater than 1½".

BCI® Joists Only — Minimum Distance (D) From Any Support To The Centerline Of The Hole																
Round Hole Diameter		2"	3"	4"	5"	6"	6½"	7"	8"	8⅞"	9"	10"	11"	12"	13"	
Rectangular Hole Side		—	—	—	3"	5"	6"	7"	—	—	—	—	—	—	—	
Any 9½" Joist	Span	8'	1'-0"	1'-1"	1'-5"	2'-1"	2'-9"	3'-1"	3'-5"							
		12'	1'-0"	1'-2"	2'-2"	3'-2"	4'-2"	4'-8"	5'-2"							
		16'	1'-0"	1'-7"	2'-11"	4'-3"	5'-7"	6'-3"	6'-11"							
Round Hole Diameter		2"	3"	4"	5"	6"	6½"	7"	8"	8⅞"	9"	10"	11"	12"	13"	
Rectangular Hole Side		—	—	—	2"	3"	4"	5"	7"	8"	—	—	—	—	—	
Any 11⅞" Joist	Span	8'	1'-0"	1'-1"	1'-5"	1'-10"	2'-4"	2'-7"	2'-10"	3'-4"	3'-9"					
		12'	1'-0"	1'-4"	2'-1"	2'-10"	3'-7"	3'-11"	4'-3"	5'-0"	5'-8"					
		16'	1'-0"	1'-10"	2'-10"	3'-9"	4'-9"	5'-3"	5'-9"	6'-9"	7'-7"					
		20'	1'-1"	2'-3"	3'-6"	4'-9"	5'-11"	6'-7"	7'-2"	8'-5"	9'-6"					
Round Hole Diameter		2"	3"	4"	5"	6"	6½"	7"	8"	8⅞"	9"	10"	11"	12"	13"	
Rectangular Hole Side		—	—	—	—	2"	3"	3"	5"	6"	6"	8"	9"	—	—	
Any 14" Joist	Span	8'	1'-0"	1'-1"	1'-2"	1'-3"	1'-8"	1'-10"	2'-1"	2'-6"	2'-10"	2'-11"	3'-4"	3'-8"		
		12'	1'-0"	1'-1"	1'-3"	1'-10"	2'-6"	2'-10"	3'-1"	3'-9"	4'-3"	4'-4"	5'-0"	5'-7"		
		16'	1'-0"	1'-1"	1'-8"	2'-6"	3'-4"	3'-9"	4'-2"	5'-0"	5'-8"	5'-10"	6'-8"	7'-5"		
		20'	1'-0"	1'-1"	2'-1"	3'-2"	4'-2"	4'-8"	5'-2"	6'-3"	7'-2"	7'-3"	8'-4"	9'-4"		
24'	1'-0"	1'-4"	2'-6"	3'-9"	5'-0"	5'-8"	6'-3"	7'-6"	8'-7"	8'-9"	10'-0"	11'-2"				
Round Hole Diameter		2"	3"	4"	5"	6"	6½"	7"	8"	8⅞"	9"	10"	11"	12"	13"	
Rectangular Hole Side		—	—	—	—	—	—	2"	3"	5"	5"	6"	8"	9"	10"	
Any 16" Joist	Span	8'	1'-0"	1'-1"	1'-2"	1'-2"	1'-3"	1'-3"	1'-3"	1'-7"	1'-11"	2'-0"	2'-5"	2'-9"	3'-2"	3'-7"
		12'	1'-0"	1'-1"	1'-2"	1'-2"	1'-3"	1'-6"	1'-10"	2'-5"	2'-11"	3'-0"	3'-7"	4'-2"	4'-9"	5'-4"
		16'	1'-0"	1'-1"	1'-2"	1'-2"	1'-8"	2'-1"	2'-6"	3'-3"	3'-11"	4'-0"	4'-10"	5'-7"	6'-4"	7'-2"
		20'	1'-0"	1'-1"	1'-2"	1'-2"	2'-1"	2'-7"	3'-1"	4'-1"	4'-11"	5'-1"	6'-0"	7'-0"	8'-0"	8'-11"
24'	1'-0"	1'-1"	1'-2"	1'-4"	2'-6"	3'-1"	3'-9"	4'-11"	5'-11"	6'-1"	7'-3"	8'-5"	9'-7"	10'-9"		
Round Hole Diameter		2"	3"	4"	5"	6"	6½"	7"	8"	8⅞"	9"	10"	11"	12"	13"	
Rectangular Hole Side		—	—	—	—	—	—	2"	3"	5"	5"	6"	8"	9"	10"	
18" BCI®90 2.0 Joist	Span	12'	1'-0"	1'-1"	1'-2"	1'-2"	1'-3"	1'-3"	1'-3"	1'-7"	1'-11"	2'-0"	2'-5"	2'-9"	3'-2"	3'-7"
		16'	1'-0"	1'-1"	1'-2"	1'-2"	1'-3"	1'-6"	1'-10"	2'-5"	2'-11"	3'-0"	3'-7"	4'-2"	4'-9"	5'-4"
		20'	1'-0"	1'-1"	1'-2"	1'-2"	1'-8"	2'-1"	2'-6"	3'-3"	3'-11"	4'-0"	4'-10"	5'-7"	6'-4"	7'-2"
		24'	1'-0"	1'-1"	1'-2"	1'-2"	2'-1"	2'-7"	3'-1"	4'-1"	4'-11"	5'-1"	6'-0"	7'-0"	8'-0"	8'-11"
28'	1'-0"	1'-1"	1'-2"	1'-4"	2'-6"	3'-1"	3'-9"	4'-11"	5'-11"	6'-1"	7'-3"	8'-5"	9'-7"	10'-9"		
Round Hole Diameter		2"	3"	4"	5"	6"	6½"	7"	8"	8⅞"	9"	10"	11"	12"	13"	
Rectangular Hole Side		—	—	—	—	—	—	2"	3"	5"	5"	6"	8"	9"	10"	
20" BCI® 90 2.0 Joist	Span	12'	1'-0"	1'-1"	1'-2"	1'-2"	1'-3"	1'-3"	1'-3"	1'-7"	1'-11"	2'-0"	2'-5"	2'-9"	3'-2"	3'-7"
		16'	1'-0"	1'-1"	1'-2"	1'-2"	1'-3"	1'-6"	1'-10"	2'-5"	2'-11"	3'-0"	3'-7"	4'-2"	4'-9"	5'-4"
		20'	1'-0"	1'-1"	1'-2"	1'-2"	1'-8"	2'-1"	2'-6"	3'-3"	3'-11"	4'-0"	4'-10"	5'-7"	6'-4"	7'-2"
		24'	1'-0"	1'-1"	1'-2"	1'-2"	2'-1"	2'-7"	3'-1"	4'-1"	4'-11"	5'-1"	6'-0"	7'-0"	8'-0"	8'-11"
28'	1'-0"	1'-1"	1'-2"	1'-4"	2'-6"	3'-1"	3'-9"	4'-11"	5'-11"	6'-1"	7'-3"	8'-5"	9'-7"	10'-9"		
Round Hole Diameter		2"	3"	4"	5"	6"	6½"	7"	8"	8⅞"	9"	10"	11"	12"	13"	
Rectangular Hole Side		—	—	—	—	—	—	2"	3"	5"	5"	6"	8"	9"	10"	

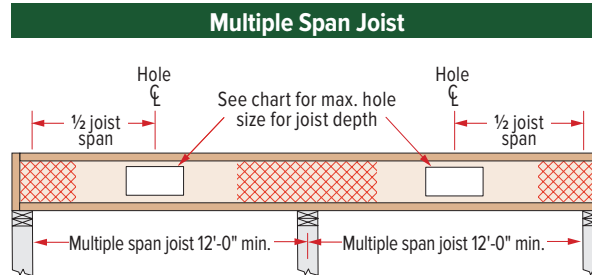
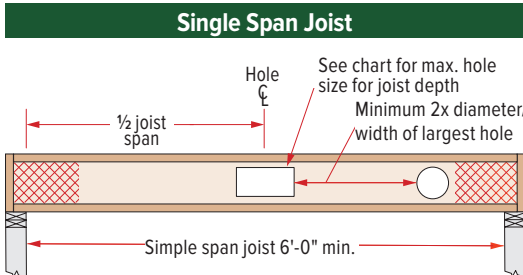
HOW TO USE THIS TABLE

- Select a table row based on joist depth and the actual joist span rounded up to the nearest span shown in the table.
- Scan across the row to the column for the appropriate round hole diameter or rectangular hole side. Use the longest side of a rectangular hole.
- The table value shown is the closest that the centerline of the hole may be to the edge or face of the nearest support.

NOTES

- ▶ **DO NOT** cut joist flanges.
- ▶ Holes apply to either single or multiple joists in repetitive member conditions.
- ▶ For multiple holes, the amount of horizontal uncut web between holes must equal at least twice the diameter (or longest side) of the largest hole.
- ▶ Table assumes one hole per horizontal location. Holes located above or below another should be considered as a single hole that encompasses all the holes.
- ▶ 1½" round knockouts in the web may be removed by using a short piece of metal pipe and hammer.
- ▶ Single holes may be positioned anywhere vertically in the web, provided they do not extend into either flange.
- ▶ This table was designed to apply *only* to the design conditions covered by tables elsewhere in this publication (maximum uniform PLF load).
- ▶ Use the BC Calc® software to check other hole sizes or holes in other design conditions. It may be possible to exceed the limitations of this table by analyzing a specific application with the BC Calc® software.

Large Rectangular Holes

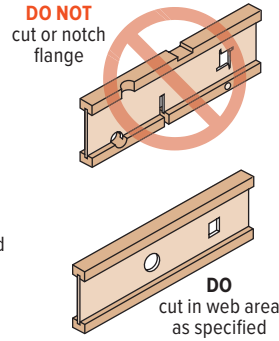
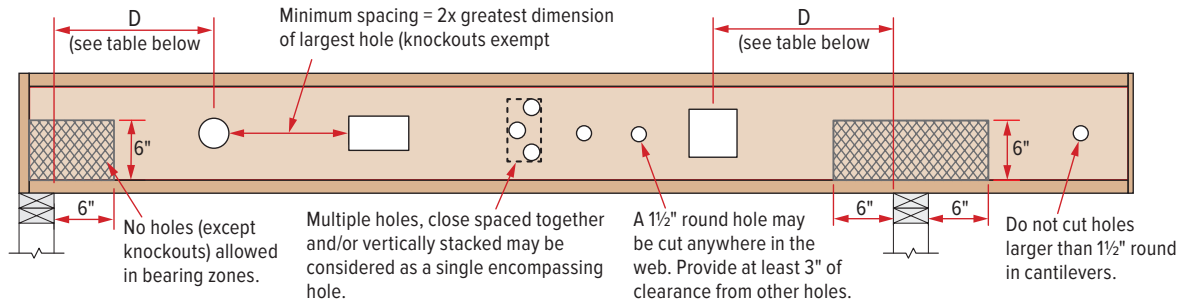


Maximum Hole Size

Joist Depth	Simple Span	Multiple Span
9½"	6" x 14"	6" x 12"
11⅞"	7" x 16" 8" x 15"	8" x 12"
14"	9" x 16" 10" x 15"	8" x 15"
16"	9" x 18" 11" x 16"	10" x 14"

Larger holes may be possible for either single or multiple span joists; use BC Calc® sizing software for specific analysis.

AJS Joist Hole Location and Sizing



AJS® joists are manufactured with 1½" round perforated knockouts in the web at approximately 12" o.c. Minimum distance from support, listed in table below, is required for all holes greater than 1½".

AJS® Joists Only — Minimum Distance (D) From Any Support To The Centerline Of The Hole														
Round Hole Diameter	2"	3"	4"	5"	6"	6½"	7"	8"	8¾"	9"	10"	11"	12"	13"
Rectangular Hole Side	—	—	2	4"	6"	6"	—	—	—	—	—	—	—	—
Any 9½" Joist	Span	8'	2'-3"	2'-8"	3'-1"	3'-6"	4'-0"	4'-0"						
		12'	3'-5"	4'-0"	4'-8"	5'-4"	6'-0"	6'-0"						
		16'	4'-6"	5'-5"	6'-3"	7'-1"	8'-0"	8'-0"						
Any 11⅞" Joist	Span	8'	1'-7"	1'-11"	2'-4"	2'-8"	3'-0"	3'-5"	3'-9"	4'-0"				
		12'	2'-5"	2'-11"	3'-6"	4'-0"	4'-7"	4'-10"	5'-1"	5'-8"	6'-0"			
		16'	3'-2"	3'-11"	4'-8"	5'-4"	6'-1"	6'-6"	6'-10"	7'-7"	8'-0"			
Any 14" Joist	Span	8'	1'-1"	1'-5"	1'-9"	2'-1"	2'-5"	2'-7"	2'-8"	3'-0"	3'-4"	3'-8"	4'-0"	
		12'	1'-8"	2'-2"	2'-8"	3'-1"	3'-7"	3'-10"	4'-1"	4'-7"	5'-0"	5'-0"	5'-6"	6'-0"
		16'	2'-3"	2'-11"	3'-6"	4'-2"	4'-10"	5'-2"	5'-5"	6'-1"	6'-8"	6'-9"	7'-4"	8'-0"
Any 16" Joist	Span	8'	1'-0"	1'-1"	1'-4"	1'-7"	1'-11"	2'-1"	2'-2"	2'-6"	2'-9"	2'-9"	3'-1"	3'-4"
		12'	1'-2"	1'-7"	2'-0"	2'-5"	2'-11"	3'-1"	3'-4"	3'-9"	4'-1"	4'-2"	4'-7"	5'-1"
		16'	1'-7"	2'-1"	2'-8"	3'-3"	3'-10"	4'-2"	4'-5"	5'-0"	5'-6"	5'-7"	6'-2"	6'-9"
Any 18" AJS® 25/30 Joist	Span	8'	1'-0"	1'-1"	1'-2"	1'-2"	1'-4"	1'-6"	1'-8"	2'-0"	2'-4"	2'-4"	2'-9"	3'-1"
		12'	1'-0"	1'-1"	1'-2"	1'-5"	2'-0"	2'-3"	2'-6"	3'-0"	3'-6"	3'-7"	4'-1"	4'-8"
		16'	1'-0"	1'-1"	1'-3"	1'-11"	2'-8"	3'-0"	3'-4"	4'-1"	4'-8"	4'-9"	5'-6"	6'-3"
Any 20" AJS® 25/30 Joist	Span	8'	1'-0"	1'-1"	1'-2"	1'-2"	1'-3"	1'-5"	1'-8"	2'-0"	2'-0"	2'-4"	2'-8"	2'-11"
		12'	1'-0"	1'-1"	1'-2"	1'-7"	1'-10"	2'-1"	2'-7"	3'-0"	3'-0"	3'-6"	4'-0"	4'-11"
		16'	1'-0"	1'-1"	1'-2"	1'-7"	2'-2"	2'-6"	2'-10"	3'-5"	4'-0"	4'-1"	4'-8"	5'-4"
Any 22" AJS® 25/30 Joist	Span	8'	1'-0"	1'-1"	1'-2"	1'-2"	1'-3"	1'-3"	1'-7"	1'-11"	2'-0"	2'-4"	2'-8"	3'-1"
		14'	1'-0"	1'-1"	1'-2"	1'-2"	1'-3"	1'-6"	1'-9"	2'-3"	2'-8"	2'-9"	3'-3"	3'-9"
		18'	1'-0"	1'-1"	1'-2"	1'-2"	1'-7"	1'-11"	2'-3"	2'-11"	3'-6"	3'-7"	4'-3"	4'-11"
Any 24" AJS® 25/30 Joist	Span	8'	1'-0"	1'-1"	1'-2"	1'-2"	1'-3"	1'-3"	1'-4"	1'-5"	1'-6"	1'-10"	2'-2"	2'-6"
		14'	1'-0"	1'-1"	1'-2"	1'-2"	1'-3"	1'-3"	1'-7"	2'-0"	2'-1"	2'-7"	3'-0"	3'-6"
		18'	1'-0"	1'-1"	1'-2"	1'-2"	1'-3"	1'-3"	1'-5"	2'-1"	2'-7"	2'-8"	3'-3"	3'-11"

HOW TO USE THIS TABLE

- Select a table row based on joist depth and the actual joist span rounded up to the nearest span shown in the table.
- Scan across the row to the column for the appropriate round hole diameter or rectangular hole side. Use the longest side of a rectangular hole.
- The table value shown is the closest that the centerline of the hole may be to the edge or face of the nearest support.

NOTES

- ▶ **DO NOT** cut joist flanges.
- ▶ Holes apply to either single or multiple joists in repetitive member conditions.
- ▶ For multiple holes, the amount of horizontal uncut web between holes must equal at least twice the diameter (or longest side) of the largest hole.
- ▶ Table assumes one hole per horizontal location. Holes located above or below another should be considered as a single hole that encompasses all the holes.
- ▶ 1½" round knockouts in the web may be removed by using a short piece of metal pipe and hammer.
- ▶ Single holes may be positioned anywhere vertically in the web, provided they do not extend into either flange.
- ▶ This table was designed to apply *only* to the design conditions covered by tables elsewhere in this publication (maximum uniform PLF load).
- ▶ Use the BC Calc® software to check other hole sizes or holes in other design conditions. It may be possible to exceed the limitations of this table by analyzing a specific application with the BC Calc® software.

Calculated Fire Resistance

Versa-Lam® LVL and BOISE GLULAM® beams and columns may be used as exposed members in fire resistance rated construction. The IBC references Chapter 16 of the National Design Specification for Wood Construction (NDS) for exposed wood member design procedures. Calculation procedures in Chapter 16 of the NDS ensure wood members are of sufficient size and capacity to carry the applied loads when adjusted for fire exposure. Adjustment of member carrying capacity is based upon the charring that occurs on the outside of a wood beam or column exposed to heat and flame.

Char is the residue created from the combustion of wood. Charring forms a self-insulating surface layer, which protects the wood fiber within from higher temperatures. Thus, the inner section of a beam or column retains its structural properties during a fire. Versa-Lam® LVL and BOISE GLULAM® beams have an equivalent char rate to that of commonly accepted solid sawn timber of approximately 1½ inches per

hour. A char rate allows for the calculated fire resistance of a beam or column, since an uncharred cross-section can be estimated for a specified fire duration.

Chapter 16 of the NDS provides an effective char layer thickness for fire resistance calculations. The char layer thickness is based upon a char rate of 1½ inches per hour plus an additional thickness that accounts for heat damage at char/wood boundary. The remaining dimensions are then used to calculate section properties.

Fire Resistance Rating (hr)	Effective Char Layer Thickness a_{char}
1	1.8"
1.5	2.5"
2	3.2"

Calculated Fire Resistance — Versa-Lam LVL

Versa-Lam® LVL may be utilized in structures where component fire resistance is required due to its equivalent char rate to solid sawn lumber. The following is a floor beam design example following design procedures in Chapter 16 of the NDS:

Versa-Lam® LVL may be utilized in structures where component fire resistance is required due to its equivalent char rate to solid sawn lumber. The following is a floor beam design example following design procedures in Chapter 16 of the NDS:

Example 1: Versa-Lam® LVL Floor Beam Problem

A 7" x 14" Versa-Lam® LVL 2.1E 3100 beam is specified in a floor application. Will the beam be adequate for a one hour fire resistance if exposed on three sides? Design loading is as follows:

- ▶ Span Length: 24'-0" (simple span)
- ▶ Floor Live Load: 50 psf, Floor Dead Load: 12 psf
- ▶ Tributary Area Width: 12'-0"

Solution

Step 1: Determine allowable moment capacity after one hour fire exposure

Since the beam is exposed on three sides, $b_{fire} = 3.4"$ and $d_{fire} = 12.2"$.

The resulting section properties are:

- ▶ Area (A_{fire}) = $b_{fire} * d_{fire} = 41.5 \text{ in}^2$
- ▶ Section Modulus (S_{fire}) = $b_{fire} * d_{fire}^2 / 6 = 84.3 \text{ in}^3$

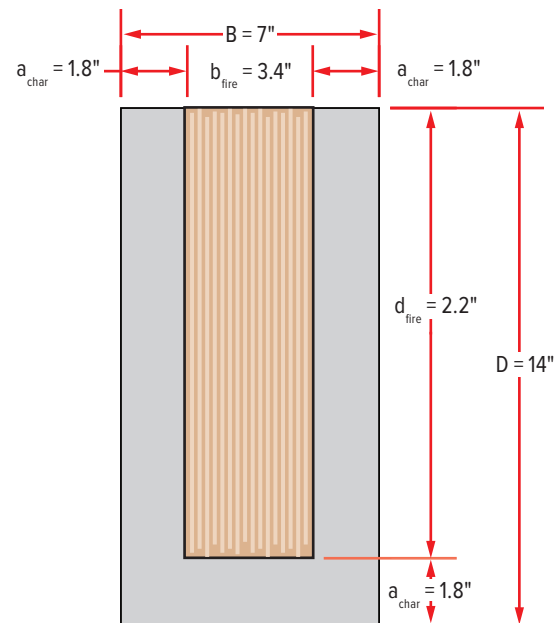
Per NDS, the average bending strength may be used in fire design. Thus, the allowable bending stress is multiplied by a 2.85 factor. Since lateral support is assumed to be maintained during the fire, only the depth factor (C_f) shall be applied. The depth factor is calculated using the original beam depth.

- ▶ Allowable Moment = $2.85 * F'_b * C_f * S_{fire} = 2.85 * 3100 * (12/14)^{(1/9)} * 84.3 = 61,012 \text{ lb*ft}$

Step 2: Determine Actual Moment

- ▶ Actual Moment = $w * L^2 / 8 = (50 + 12) * 12 * 24^2 / 8 = 53,568 \text{ lb*ft}$

Actual Moment < Allowable Moment: 7" x 14" Versa-Lam® LVL rated for one hour fire resistance.

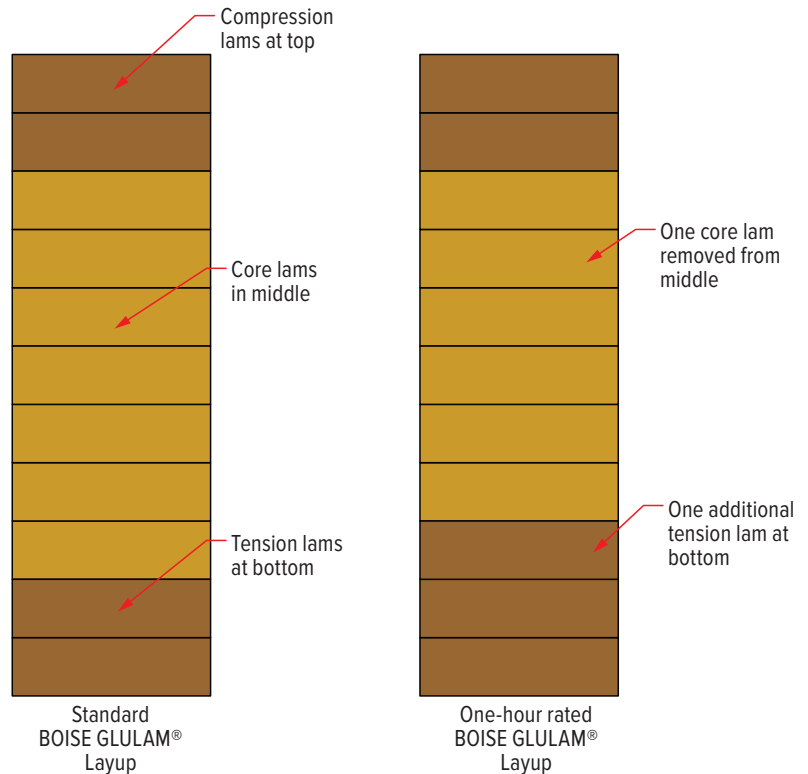


Calculated Fire Resistance

BOISE GLULAM® Fire Rated Lay-up

BOISE GLULAM® beams may be designed for projects where the fire resistance of individual components is necessary. Due to glulam layups — higher grade laminations are located in the top and bottom of the beam — a specific layup is required depending upon the fire duration required. For a 1-hour rated beam, an additional high grade tension lamination replaces a middle core lamination (see adjacent figure). 1½- and 2-hour fire-rated glulam beams may also be manufactured. For beams exposed to fire on all four sides, an equal number of high grade laminations are added to the top as well. All fire modified glulams are stamped with their corresponding fire duration rating. Since all fire-rated glulam beams are custom-order, please contact your local Boise Cascade representative for ordering.

Fire resistance can be calculated for non fire modified glulams as well. Without the bottom tension lamination, allowable design stresses can be calculated at 70% of the original design stresses. This reduction can only be applied to one hour fire ratings. Since the reduction is significant, the use of fire rated glulams typically provide a more efficient design.



Example 2: BOISE GLULAM® Ridge Beam Problem

A 6¾" x 24" BOISE GLULAM® 24F-V4/DF beam is specified in a ridge beam application. Will this beam with a fire rated layup be adequate for a one hour fire resistance if exposed on three sides? Design loading is as follows:

- ▶ Span Length: 30'-0" (simple span)
- ▶ Snow Load: 40 psf, Roof Dead Load: 15 psf
- ▶ Tributary Area Width: 16'-0"

Solution

Step 1: Determine allowable moment capacity after one hour fire exposure

Since the beam is exposed on three sides, $b_{fire} = 3.15"$ and $d_{fire} = 22.2"$. The resulting section properties are:

- ▶ Area (A_{fire}) = $b_{fire} * d_{fire} = 69.9 \text{ in}^2$
- ▶ Section Modulus (S_{fire}) = $b_{fire} * d_{fire}^2 / 6 = 259 \text{ in}^3$

Lateral support is assumed to be maintained during the fire, thus only the volume factor (C_v) shall be applied. The volume factor is calculated using the original beam dimensions.

- ▶ Volume Factor = $(5.125/6.75)^{0.1} * (12/24)^{0.1} * (21/30)^{0.1} = 0.88$
- ▶ Allowable Moment = $2.85 * F'_b * C_v * S_{fire} = 2.85 * 2400 * 0.88 * 259 = 129,300 \text{ lb*ft}$

Step 2: Determine Actual Moment

- ▶ Actual Moment = $w * L^2 / 8 = (40 + 15) * 16 * 30^2 / 8 = 99,000 \text{ lb*ft}$

Actual Moment < Allowable Moment: 6¾" x 24" BOISE GLULAM® 24F-V4/DF beam rated for one hour fire resistance.

Note: If the BOISE GLULAM® was not a fire rated adjusted layup, the Allowable Moment = $0.7 * 129,300 \text{ lb*ft} = 90,510 \text{ lb*ft}$, which would not be structurally adequate for this application.

Frequently Asked Questions Regarding Fire Resistance

Q: What is the Smoke Development Index?

A: The smoke development index is a measure of the concentration of smoke a material emits as it burns. Versa-Lam® LVL has a smoke index of 105, which is lower than most wood structural panels. A smoke development index of 450 is commonly used as a limiting value in building codes.

Q: What is the difference between Type X and Type C gypsum board?

A: Fire-rated gypsum board is typically available in two separate types, X and C. When exposed to heat, water evaporates from the gypsum and the particles shrink. This causes the gypsum particles to lose their bond and the board disintegrates. In Type X gypsum board, glass fiber is mixed with gypsum during the manufacturing process. The glass fiber acts as reinforcement, increasing the board's structural capacity for a longer period of time during exposure to fire. Vermiculite ore is added with glass fiber in the production of Type C gypsum board. The vermiculite ore expands with an increase in temperature, in effect counteracting the shrinkage of the gypsum particles. Thus, Type C provides greater fire resistance than Type X. It is very important that the design professional of record specifies the correct type of fire-rated gypsum board per the floor/ceiling assemblies shown on pages 7–13.

Q: Are the adhesives in EWP products fire rated?

A: The adhesives used in Boise Cascade EWP products have been extensively tested according to current American Society for Testing and Materials (ASTM) and Canadian Standards Association (CSA) specifications to ensure structural, moisture durability, and heat durability performance.

Q: What is a flame spread rating?

A: A flame spread rating is used to assess the surface flammability of building materials and interior finish products by measuring the rate that flame travels across the surface of a material. The U.S. building codes specify three classifications of building areas, dependent upon the fire hazard severity. These classifications are dependent upon the fire severity in a particular building area. A specific material is allowed in an area if its flame spread rating meets the individual classification standard. Class I or A represents areas where the fire risk is most severe, for example an exitway for a public assembly area that does not have sprinklers. Plywood and lumber that are fire-retardant treated are allowed in this most severe classification. Versa-Lam® LVL qualifies in the Class II or B classification. Thus, Versa-Lam® LVL may be installed in areas within this classification, such as exit corridors in business, educational, multi-family and hotel structures. Versa-Lam® LVL may also be used in Class III or C areas, which include all residential areas and in specific rooms of most all other structures (excluding hospitals and institutions). Most all other wood products fall into this category, including structural panels, solid-sawn lumber, Boise Cascade BCI® and AJS® Joists, Boise Cascade® Rimboard and BOISE GLULAM® Beams. It should be noted that flame spread is only a surface measurement and can not be used to determine the fire duration of a structural component.

Q: Are Boise Cascade EWP products available with a fire retardant treatment?

A: Boise Cascade does not manufacture any BCI®, AJS® or Versa-Lam® LVL with a fire retardant treatment and does not allow the products to be pressure-treated by a third-party. Fire-retardant treatments typically reduce the strength and stiffness of the wood. There are some topical treatments on the market for wood that claim to provide a Class A flame spread rating. Boise Cascade has not tested any of these products to substantiate any of the claims made by these treatments and the claims of flame spread rating for these treatments is the responsibility of the treatment manufacturer.

Q: Do Boise Cascade fire assemblies have a UL® listing?

A: Underwriters Laboratories® is one of several testing laboratories in North America that are certified by the national building codes to perform floor/ceiling and wall assembly testing. For those assemblies, all certified laboratories conduct the fire testing per the same ASTM provisions. If a building official or designer requests a UL number, this publication containing the assembly in question with the corresponding code reference numbers may be submitted. A complete listing of Boise Cascade fire-endurance rated assemblies can be obtained from the APA – The Engineered Wood Association at:
www.apawood.org/publication-search?q=w305.

Q: What is mineral fiber insulation and how is it specified?

A: Mineral fiber insulation is a fire resistive material composed principally of fibers manufactured from rock, slag, or glass, with or without binders. Mineral fiber insulation is typically used in one-hour floor ceiling assemblies that utilize a single layer of gypsum board (see details on pages 9–13). The mineral fiber insulation batts are basically a fire resistant substitute for the second layer of gypsum board, in order to maintain a one-hour fire rating. Mineral fiber insulation is specified in a thickness (inches) and density (pounds per cubic foot). Though the specified material dimensions should be followed in constructing assemblies, equivalent mineral fiber insulation may be substituted per approval of the project's design professional of record and Boise Cascade EWP Engineering. For example — if 2" thick — 3.5 PCF thick mineral wool is listed, a thicker but less dense product may be used if approved. An equivalent thickness for 2.8 PCF mineral wool would be 2.5" (equivalent thickness = 2" x (3.5 PCF / 2.8 PCF) = 2.5").

Boise Cascade is one of the largest producers of engineered wood products in North America. With coast-to-coast distribution, we strive to meet our customer's needs through regional product offerings, on-time delivery, and continued technical support long after the sale. We know our success depends upon yours. And that's why we offer a full line of innovative engineered wood products that give you the strength, stability, and consistent performance you need for each project—and every challenge.

BCI® Joists

High-performance floors start with BCI® Joists — providing strong, high-quality results along with the consistency and easy handling needed to get the job done efficiently.

AJS® Joists

Boise Cascade AJS® joists are engineered to perform. With solid-sawn flanges manufactured with proprietary MSR (machine stress rated) lumber, they're made to deliver strength and consistency you can count on.

Versa-Lam® LVL Beams and Headers

Get industry-leading overall value without sacrificing strength. Versa-Lam LVL beams and headers resist twisting, shrinking, and splitting — creating flatter, quieter floors that keep customers happy.

Versa-Stud® Wall Framing

Whether tackling a grand stairway, tall window walls, or beyond, Versa-Stud LVL is manufactured with the reliability and strength needed to get the job done right.

OSB Rimboard

Give floors the support they need with Boise Cascade® OSB Rimboard — a one-step, easy-to-install solution designed for use with BCI® and AJS® Joists.

BOISE GLULAM®

Adaptable. Affordable. Easy to install. With a variety of sizes and appearance grades, BOISE GLULAM® products are some of the most appealing engineered wood solutions available.

Boise Cascade Software Solutions

From 3D design tools to workflow management and beyond, the Boise Cascade® suite of software is built to make lumberyards, distributors, and their teams operate faster, stronger, and easier.

Limited Lifetime Warranty

All Boise Cascade BCI® joist, AJS® joist, Versa-Lam® LVL, and BOISE GLULAM® products are covered by a limited lifetime warranty for the expected life of the structure.

View the complete warranty on our website.

bc.com/terms-conditions/sales-terms-and-conditions

NEED MORE INFORMATION?

Visit bc.com/ewp
or call 1-800-232-0788



Boise Cascade®
ENGINEERED WOOD PRODUCTS