

LIQUID FLASHING & DETAIL SEALANT (AAMA TESTED)

BarriBondXL

Description

BarriBondXL is a high-solids, silane-terminated polyether (STPE) based compound designed for detailing rough openings, penetrations, sheathing joints, countersunk screws, transitions, angle changes, and other critical details encountered in CCW Fluid-Applied Air Barrier Systems. BarriBondXL can also be used as a termination mastic over CCW Self-Adhered Sheet Flashing Membranes. BarriBondXL is a single-component, moisture-cured adhesive/sealant which is applied from a sausage caulking gun, then smoothed in place with a trowel or squeegee. BarriBondXL is offered in a signature blue-gray color for easy identification in warranted CCW Air Barrier Systems. The product is formulated for clean, easy application over horizontal, vertical, and inverted surfaces.

Features and Benefits

- Simple system warranted by one manufacturer: Complete installation only requires CCW liquid membrane and BarriBondXL (2 products)
- Qualified as a liquid flashing to American Architectural Manufacturers' Association standard (AAMA 714-15)
- Convenient 20 fl-oz. (0.6 L) Sausage pack: long shelf life, easy extrusion, minimal waste
- Highly Thixotropic Behavior: neat installation, no slumping or dripping, easy to trowel smooth
- High Solids: 1-coat application, fills cracks and gaps up to 1" (25.4 mm) wide, virtually no shrinkage after cure
- Flexible & Elastic: Forms a tough, durable, and seamless coating at critical details
- Rapid Cure: Resists rain within minutes of application. Resistant to standing water after cure
- User-Friendly: Compatible with many common construction materials and CCW Air Barriers
- Can be applied over damp concrete and masonry substrates
- Low VOC, Low Odor
- No Shrinkage or Staining
- Resistant to Organic Growth

Application

Substrate Preparation

Surfaces shall be clean of oil, dust, and sound with no excess mortar droppings. Concrete and masonry surfaces can be damp, but no standing water or frost. All other substrates shall be dry. Concrete Masonry Joints shall be free of voids and shall be tooled or struck flush. Gaps from ¼" to 1" wide shall be fitted with backer rod. Joints receiving backer rod shall provide a sealant depth of at least a ¼" but not more than ½". Acceptable substrates include Concrete Masonry Units, mortar/grout, concrete, exterior grade gypsum board, plywood, OSB, wood, aluminum, galvanized metal, and anodized aluminum. Any damaged gypsum sheathing should be replaced. Voids or irregularities in concrete or masonry substrates should be patched using a cementitious patching compound as needed.



1 Detail



2 Apply



3 Trowel



4 Check

LIQUID FLASHING & DETAIL SEALANT (AAMA TESTED)

BarriBondXL

Use of BarriBondXL in CCW Air Barrier Systems

Acceptable CCW Membrane Products	Acceptable Applications
Sheet Products	
Fire-Resist 705 FR-A	Surface prep (installed before wall membrane): Gap Fill, Fillet Beads
Fire-Resist 705 FR-A XLT	
CCW-705	
CCW-705 XLT	Membrane Detailing: Rough Openings, Pipe/Duct Penetrations, T-Joints, Reverse Laps, Field-Cut Edges, Corner Pinholes, Screw/Hardware Penetrations, Membrane Terminations
CCW-705 HT	
CCW-705 TWF	
CCW-705 TWF XLT	
Liquid Products	
Fire-Resist Barritech VP	Install before or after membrane: Gap Fill, Fillet Beads, Sheathing Board Joints, Screw Patches, Inside & Outside Corners, Rough Openings, Pipe/Duct Penetrations, Screw/Hardware Penetrations, Transition to Neighboring WRB, Roof or Waterproofing System
Fire Resist Barrithane VP	
Fire-Resist Barritech NP™	
Fire Resist Barritech NP LT	

BarriBondXL can be applied over or under all CCW Membrane products listed in the table above.

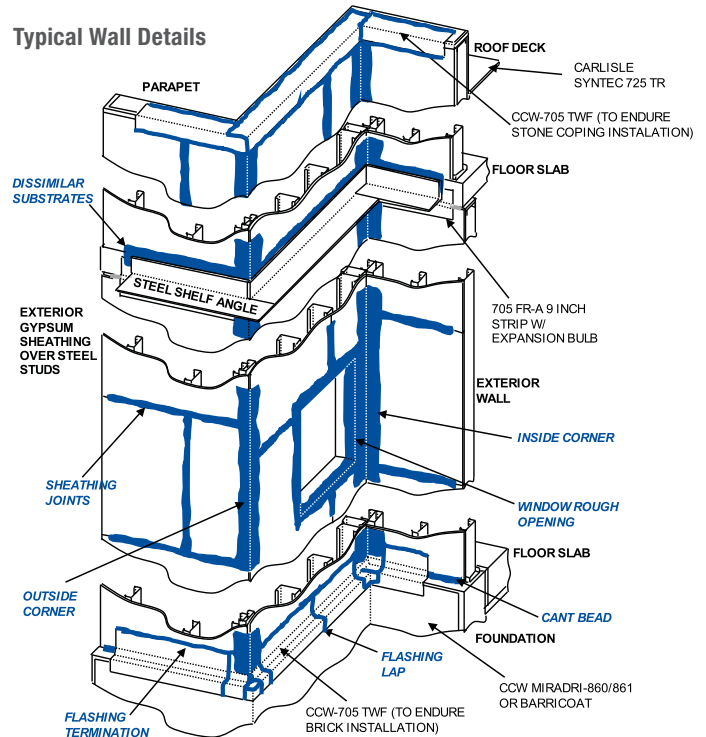
For best results, BarriBondXL should be stored above 50°F or warmer during wintertime applications. The sausage should be loaded into a suitable caulking gun. Cut nozzle orifice to user-preferred size and shape with a sharp utility knife or similar tool.

Compatibility

BarriBondXL is compatible with many common building materials including plywood, OSB, fire-treated wood, pressure-treated wood, concrete, CMU, glass-mat faced gypsum sheathing, aluminum, copper and PVC extrusion/pipe. BarriBondXL is also compatible with rigid foam insulation products including XPS, EPS, and R2+ Polyiso (foam core and facers).

BarriBondXL will not adhere to cured silicone. However, various silicone sealants commonly specified for sealing the window frame to the rough opening are compatible with cured BarriBondXL. These can be used to seal the window frame directly to cured BarriBondXL. Please consult CCW for a list of acceptable silicone window sealants.

Typical Wall Details



Liquid Flashing Application (Rough Openings, Pipe/Duct Penetrations, Inside/Outside Corners)

Apply BarriBondXL in serpentine beads over the substrate. Spread BarriBondXL using a squeegee or a trowel to provide full, uniform coverage over the substrate. Apply to openings, pipe/duct penetrations and inside/outside corners as shown in the respective CCW air barrier system standard details. Apply BarriBondXL at a uniform wet mil thickness of 40 mils (0.040 inch), continuously monitoring thickness with a CCW Wet Mil Thickness Gauge to assure adequate coverage. BarriBondXL can be applied in a single coat. To facilitate installation, joints and gaps between dissimilar substrates may be treated with BarriBondXL and allowed to cure firm before proceeding with trowel coverage of the liquid flashing area. Also, the raw edge of gypsum sheathing can be treated with CCW-702, 702 LV, or 702 WB to consolidate this substrate and facilitate coverage with BarriBondXL. In liquid flashing applications, BarriBondXL shall tie into the main CCW Air Barrier Membrane with a minimum 2 inch lap. CCW BarriBondXL can be applied over all CCW Air Barrier Membranes, or the CCW membranes can be applied over BarriBondXL, depending on construction progression.

Detailing Sealant Applications (Sheathing Joints, Dissimilar Substrates, Non-Moving Cracks, Termination Mastic):

BarriBondXL can be used to fill joints, seams, and cracks on common exterior building substrates. Joints ranging from ¼" to 1" width may be treated with BarriBondXL. All joints ¼" width or greater shall be filled with backer rod prior to the application of BarriBondXL. Apply a generous bead of BarriBond over joints, seams, or cracks. Tool BarriBondXL using a putty knife, trowel or similar tool. BarriBondXL shall fill the joint or crack and shall be capped with a "ribbon" of sealant, minimum of 40 mils (0.040 inch) thickness, and shall extend a minimum of 1 inch beyond each side of the joint. When using BarriBondXL to detail CCW 705, 705FR-A, or 705 TWF systems, a 1 inch wide by 40-mils thick ribbon of BarriBondXL shall be centered over CCW sheet membrane/flashing terminations, reverse laps, field cut edges and T-joints. BarriBondXL can also be applied as a cant bead in inside corner conditions.

Elastomeric Joint Sealant Application (Expansion/Control Joints, Window-Rough Opening Joint):

BarriBondXL can be used as an elastomeric joint sealant in conditions such as expansion or control joints in CMU or concrete walls and to seal the window/door frame to the rough opening. In these applications, the joint and substrates shall be clean, sound, dry and free of silicone or other bond-breaking contaminants. Joint shall be minimum ¼" width and maximum 1" width. Sealant depth shall be minimum ¼" and maximum ½". The joint shall be stuffed with closed cell polyethylene backer rod, or the bottom of the joint shall be taped with polyethylene bond breaker tape. Apply BarriBondXL into the joint and tool to a concave profile to assure complete fill of the joint and full contact with the substrate on each side of the joint.

Insulation Adhesive Application:

BarriBondXL can be used as an adhesive to bond rigid foam board insulation, including XPS, Insulfoam EPS, and R2+ Polyiso. Apply BarriBondXL in ⅜" thick by 3" diameter dabs to the back of rigid insulation, spacing adhesive dabs no more than 16" on center and no more than 3" from board ends and edges. After application of BarriBondXL dabs, immediately press the insulation board against the wall surface before adhesive "skins". If BarriBondXL "skins" before insulation can be placed, remove and apply fresh material. Secure the lowest row of insulation with fasteners, or begin from a ledge or footing to prevent slump or movement during cure of BarriBondXL.

Limitations

Use BarriBondXL as directed in CCW's membrane air systems, or in water resistive barrier (WRB) systems by others as approved by CCW. BarriBondXL is not suitable for Permanent UV exposure, cover product with exterior finish. BarriBondXL can be exposed to UV for a maximum of 6 months or 180 days. BarriBondXL is not intended as a wear-resistant or traffic-resistant surface. BarriBondXL is not recommended for spanning joints in excess of 1 inch wide or for filling joints/gaps of more than ½" depth. Do not apply BarriBondXL over wet substrates or over wood substrates having moisture content measuring 20% or higher. CCW BarriBondXL should not be installed in below grade conditions.

Packaging

BarriBondXL is packaged in 20 fl-oz sausages, 12 per box. Shelf life in original, unopened packaging is 12 months, provided the product is stored between 40°F and 80°F, 50% maximum relative humidity. Store BarriBondXL sausages in a cool, dry place protected from precipitation and direct sunlight.

Specifications

BarriBondXL meets all requirements of AAMA 714-15

"Voluntary Specification for Liquid-Applied Flashing to Create a Water Resistive Seal around Exterior Wall Openings in Buildings"

BarriBond XL is Type S, Grade NS, Class 25, Use NT per ASTM C920 Standard Specification for Elastomeric Joint Sealants.

LIQUID FLASHING & DETAIL SEALANT (AAMA TESTED)

BarriBondXL

Typical Properties

Property	Method	Results
Color		Blue-Gray
Membrane Thickness: CCW AVB & Applications: 40 mils		40 mils wet/ 39 mils dry
Liquid Flashing Theoretical Coverage Rate		6.27 SQ FT/ 20 fl-oz sausage
% Solids		98%
VOC	EPA Method 24	<28 g/L
Application Temperature		20°F to 110°F*
Service Temperature		Minus 40°F to 200°F
Cure Time		40 mil membrane: 24 h @ 75°F/50% RH
Tack Free Time		<45 minutes
Open Time		Approx. 15 minutes @ 75°F/50% RH
Tensile Strength	ASTM D 412	200 psi
Tensile Elongation	ASTM D 412	275%
Low-Temp Crack Bridging	ASTM C 1305	Pass; 10 cycles at -15°F
Hardness – Shore A	ASTM C 661	35 ± 5
Maximum UV Exposure		6 months

Limited Warranty

Carlisle Coatings & Waterproofing Incorporated (Carlisle) warrants this product to be free of defects in workmanship and materials only at the time of shipment from our factory. If any Carlisle materials prove to contain manufacturing defects that substantially affect their performance, Carlisle will, at its option, replace the materials or refund its purchase price. This limited warranty is the only warranty extended by Carlisle with respect to its materials. There are no other warranties, including the implied warranties of merchantability and fitness for a particular purpose. Carlisle specifically disclaims liability for any incidental, consequential, or other damages, including but not limited to, loss of profits or damages to a structure or its contents, arising under any theory of law whatsoever. The dollar value of Carlisle's liability and buyer's remedy under this limited warranty shall not exceed the purchase price of the Carlisle material in question.