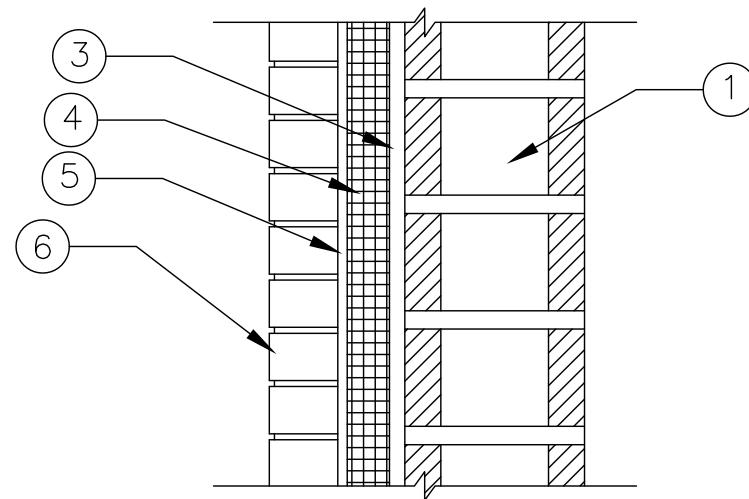


STEEL STUD WALL ASSEMBLY



MASS WALL ASSEMBLY

LAYER	STEEL STUD WALL ASSEMBLY	MASS WALL ASSEMBLY
1. BASE WALL SYSTEM	STEEL STUD MINIMUM 3 ⁵ / ₈ " DEPTH, MINIMUM 22 GAUGE AT A MAXIMUM OF 24 INCH O.C. WITH LATERAL BRACING EVERY 4 FT. VERTICALLY. LAYER OF 5 ⁸ " THICK TYPE X OR 1 ² / ₂ " THICK TYPE C GYPSUM WALL BOARD ON INTERIOR AND 1 ² / ₂ " OR 5 ⁸ " GYPSUM SHEATHING ON EXTERIOR	CONCRETE (TILT-UP OR CAST-IN-PLACE) OR CONCRETE MASONRY UNIT (CMU)
2. STUD CAVITY INSULATION	FIBER GLASS, MINERAL WOOL OR NONE	N/A
3. MEMBRANE AIR BARRIER OVER BASE WALL ASSEMBLY	FIRE RESIST BARRITECH VP, FIRE RESIST BARRITECH NP, FIRE RESIST 705FR OR NONE	
4. EXTERIOR INSULATION	R2+ MATTE MAXIMUM 3 ¹ / ₂ " THICK*	
5. AIR SPACE BETWEEN CLADDING AND INSULATION	MAXIMUM 2"	
6. EXTERIOR CLADDING	MASONRY MINIMUM 3 ¹ / ₂ " THICK, LIMESTONE OR NATURAL STONE VENEER MINIMUM 2" THICK, ARTIFICIAL CAST STONE VENEER MINIMUM 1 ¹ / ₂ " THICK, TERRA COTTA CLADDING MINIMUM 1 ¹ / ₄ " THICKNESS, METAL COMPOSITE MATERIAL (MCM) SYSTEMS THAT HAVE PASSED NFPA 285, SHEET METAL CLADDING, FIBER CEMENT SIDING, PORTLAND CEMENT STUCCO AND LATH MINIMUM 3 ⁴ / ₄ " THICKNESS, STONE ALUMINUM HONEYCOMB COMPOSITE PANEL THAT HAVE PASSED NFPA 285	

* R2+ MATTE BOARDS MAY BE TAPED OR SEALED AT JOINTS AND PENETRATIONS WITH CCW FOIL-GRIP 1402 TAPE OR WITH CAN FOAM

DETAIL IS INTENDED TO BE A GUIDE FOR INSULATION INSTALLATION ONLY.

R2-0C

R2+ MATTE NFPA 285
WALL ASSEMBLIES



© 2013 CARLISLE CORPORATION