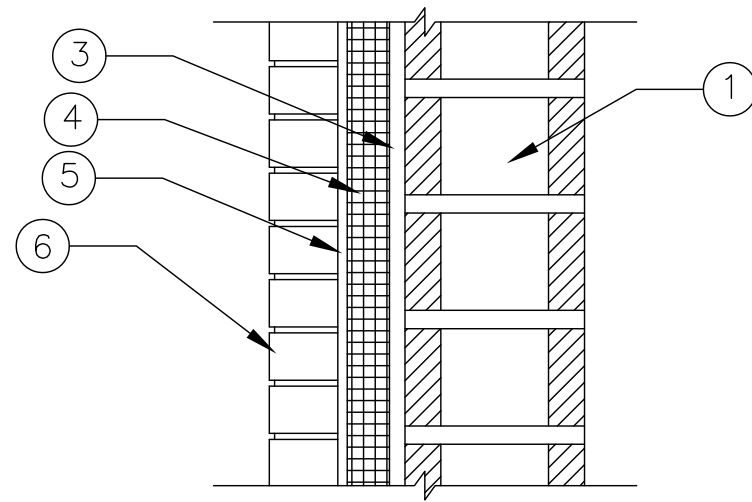


STEEL STUD WALL ASSEMBLY



MASS WALL ASSEMBLY

LAYER	STEEL STUD WALL ASSEMBLY	MASS WALL ASSEMBLY
1. BASE WALL SYSTEM	STEEL STUD MINIMUM 3 <sup>5</sup> / <sub>8</sub> " DEPTH, MINIMUM 22 GAUGE AT A MAXIMUM OF 24 INCH O.C. WITH LATERAL BRACING EVERY 4 FT. VERTICALLY. LAYER OF 5 <sup>8</sup> / <sub>8</sub> " THICK TYPE X OR 1 <sup>2</sup> / <sub>2</sub> " THICK TYPE C GYPSUM WALL BOARD ON INTERIOR AND 1 <sup>2</sup> / <sub>2</sub> " OR 5 <sup>8</sup> / <sub>8</sub> " GYPSUM SHEATHING ON EXTERIOR	CONCRETE (TILT-UP OR CAST-IN-PLACE) OR CONCRETE MASONRY UNIT (CMU)
2. STUD CAVITY INSULATION	FIBER GLASS, MINERAL WOOL OR NONE	N/A
3. MEMBRANE AIR BARRIER OVER BASE WALL ASSEMBLY	FIRE RESIST BARRITECH VP, FIRE RESIST BARRITECH NP, FIRE RESIST 705FR OR NONE	
4. EXTERIOR INSULATION	R2+ SILVER MAXIMUM 3 <sup>1</sup> / <sub>2</sub> " THICK	
5. AIR SPACE BETWEEN CLADDING AND INSULATION	MAXIMUM 2"	
6. EXTERIOR CLADDING	MASONRY (CLAY OR CONCRETE BRICK)	

DETAIL IS INTENDED TO BE A GUIDE FOR INSULATION INSTALLATION ONLY.

R2-0B

R2+ SILVER NFPA 285  
WALL ASSEMBLIES

**CARLISLE**  
COATINGS & WATERPROOFING

© 2013 CARLISLE CORPORATION