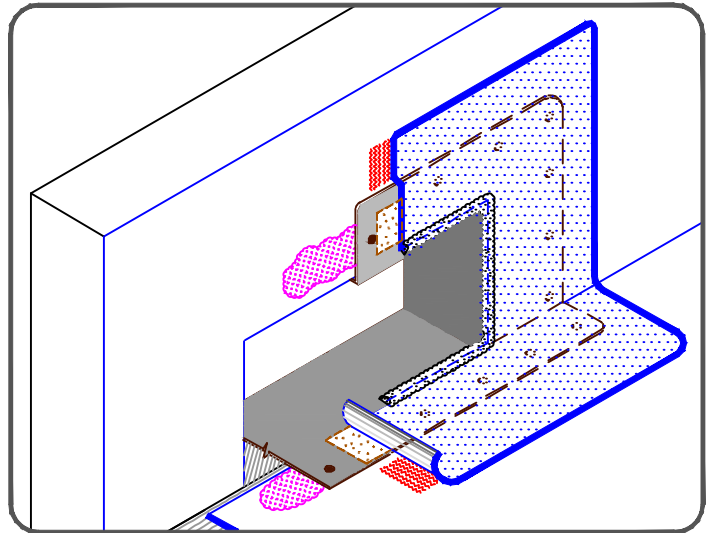


PVC ONLY
(NOT FOR TPO)

NOTES:

1. WOOD NAILERS ARE INSTALLED ONLY AT SCUPPERS TO SECURE METAL SLEEVE AND MUST EXTEND PAST THE WIDTH OF METAL SLEEVE FLANGE.
2. INSTALL WALL FLASHING PRIOR TO SCUPPER INSTALLATION.
3. METAL SCUPPER BOX MUST HAVE CONTINUOUS FLANGES WITH ROUNDED CORNERS, SOLDER ALL SCUPPER SEAMS WATER-TIGHT.
4. WATER CUT-OFF MASTIC UNDER SCUPPER FLANGE MUST BE UNDER CONSTANT COMPRESSION.
5. SCUPPER FLANGES MUST BE TOTALLY COVERED BY NON-REINFORCED PVC FLASHING WITH MINIMUM 2" (51mm) COVERAGE PAST NAIL HEAD.
6. UNIVERSAL SINGLE-PLY SEALANT IS REQUIRED AT FLASHING EDGES ON SCUPPER EDGE.



	PVC MEMBRANE	SCUPPER AT DECK- PVC		DETAIL NO.	
	APPROVED SUBSTRATE		U-18C		
0	SEE NOTE(S)		For additional information, refer to Specifications		
			THERMOPLASTIC PVC		