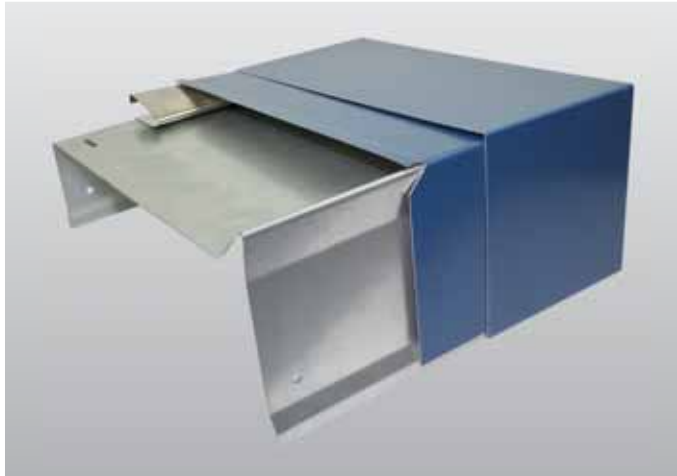


SecurEdge™ 300 Parapet Wall Coping



Overview

Carlisle's SecurEdge 300 Parapet Wall Coping, featuring hold-down cleats and metal drain chairs, can be used to cap almost any parapet. Standard coping is formed from .063" (1.60 mm) or .050" (1.25 mm) aluminum or 24 gauge galvanized steel with Kynar 500® coating. Custom metal is available by request. Standard coping cap length is 10', and cleats are made from 20 gauge galvanized steel. Metal chairs match the color and finish of the coping cap. Fabricated to any wall width required, from a minimum of 6" (150 mm) to a maximum of 32" (812 mm). Face and back leg are 4" (102 mm) nominal length, with tested approvals up to 6" (152 mm). Custom sizes are available by request.

Features and Benefits

- » Internal metal chair drainage system eliminates caulked joints
- » True welded radiused, matching corners, end caps, and other accessories are factory-fabricated
- » UL Classified, FM approved, and meets the ANSI/SPRI/FM 4435/ES-1 Roof Edge Standard Test Protocol RE-3 for coping
- » Pre-punched holes and included stainless steel fasteners facilitate proper attachment and fast installation

Installation

Review Carlisle specifications and details or visit www.carlisesyntec.com for complete installation information.

Finishes

- » Natural mill finish aluminum
- » Pre-coat Kynar 500 from Carlisle's standard color chart
- » Post-coat Kynar 500 two-coat colors from Carlisle's standard color chart
- » Non-standard Kynar 500 colors requiring multiple coatings or protective clear coats
- » Anodized aluminum clear, bronze, and black

Quality Assurance

SecurEdge 300 Coping is listed in the current FM Global RoofNav approved for Windstorm ratings up to FM 1-90 depending upon wall width, cleat spacing, and gauge of cap. SecurEdge 300 Coping is UL Classified and meets ANSI/SPRI ES-1 Test Method RE-3 for coping. The SecurEdge 300 Coping system has been tested simultaneously on the horizontal and vertical surfaces and has exceeded design wind pressure as calculated in accordance with the current edition of ANSI/SPRI/FM 4435/ES-1 Wind Design Standard for Edge Systems used with Low-Slope Roofing Systems.

Technical Services

Engineering and shop drawings, as well as long-form specifications and CAD details, are available from Carlisle. Product samples, detail sheets, color chips, and color charts are also available for submittal packages. For assistance with questions or submittals, contact Carlisle or a Carlisle Manufacturer's Representative.

Specifications

Standard Sizes	Material	Gauge	Finishes
Wall Sizes: 6"–32"	Aluminum	Standard is .050" & .063"	Mill Finish Manufacturer's Standard Kynar 500 Colors
Standard Leg Size: 4" Minimum Leg Size: 2 1/8" Maximum Leg Size: 12"	Galvanized Steel	Standard is 24 gauge up to a 24" wall	Custom or Exotic Kynar 500 Post-Finished Colors Clear Anodized Bronze Anodized
Miter Leg Lengths: < 16" Wall = 23 1/4" 17"–23" Wall = 29 1/4" 24"–32" = Custom Length	Copper & Stainless Steel by request	Other metal thicknesses by request	