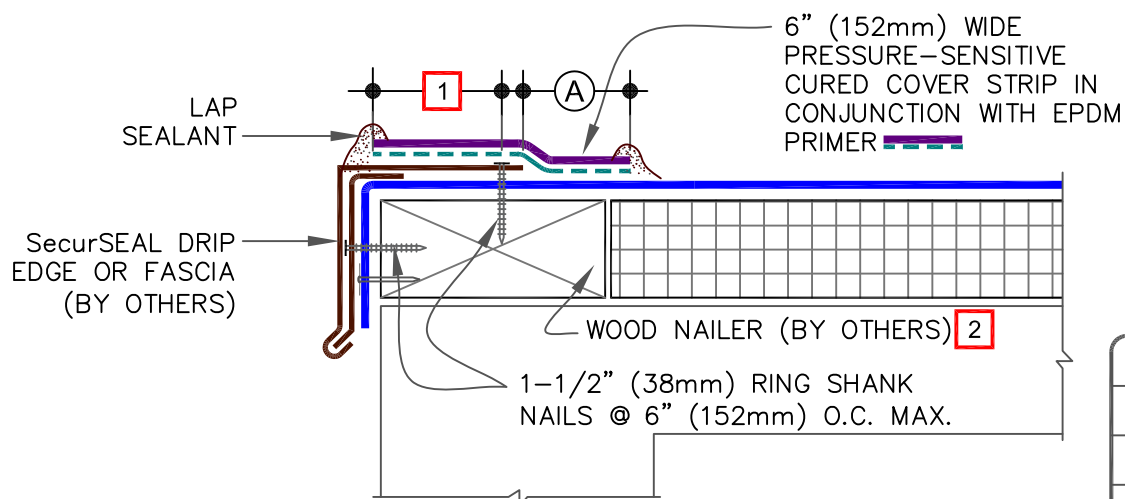


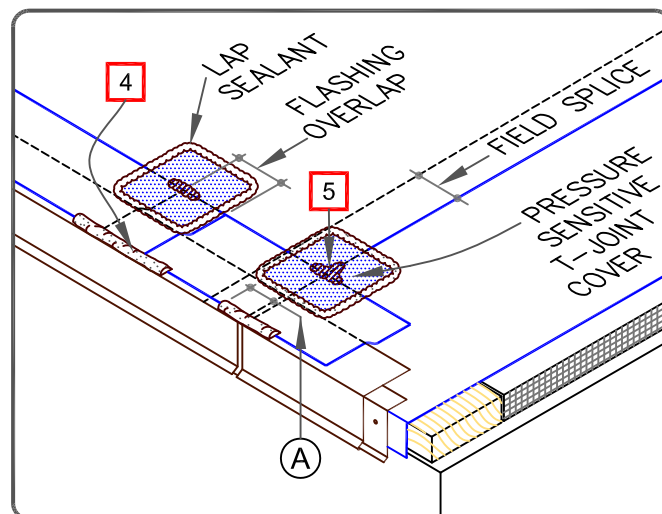
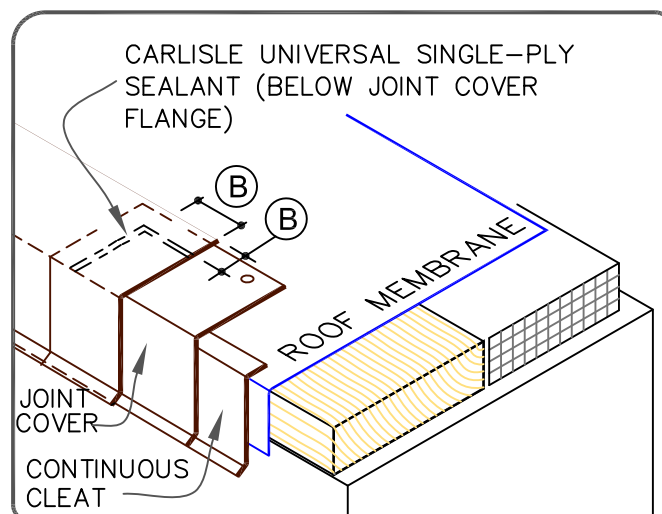
CAUTION DETAIL NOT FOR USE ON 25 OR 30-YEAR WARRANTY PROJECTS OR WHEN USING 90-MIL MEMBRANE. ACCEPTABLE EDGING SHALL CONFORM TO THERMOSET UNIVERSAL DETAILS U-1A.1, U-1C, U-1D OR U-1E.



DIMENSIONS	mm	
(A) 2"	51	MIN.
(B) 1/2"	13	TO
1"	25	

NOTES:

1. DECK FLANGE MUST BE TOTALLY COVERED BY PRESSURE-SENSITIVE CURED COVER STRIP WITH MINIMUM 2" (51mm) COVERAGE PAST NAIL HEADS.
2. WOOD NAILER MUST EXTEND PAST TOTAL WIDTH OF METAL EDGE.
3. TO REMOVE FINISHING OILS, SCRUB METAL FLANGE WITH WEATHERED MEMBRANE CLEANER; ALLOW TO DRY PRIOR TO APPLYING PRIMER.
4. LAP SEALANT MUST BE APPLIED AT FLASHING OVERLAPS AND INTERSECTIONS WITH JOINTS IN METAL EDGING.
5. APPLY LAP SEALANT ALONG THE LEADING EDGE OF THE MEMBRANE SPLICE (UNDER THE 6"x6" T-JOINT COVER) COVERING THE EXPOSED SPLICE TAPE 1/2" (13mm) IN ALL DIRECTIONS FROM THE SPLICE INTERSECTION.
6. REFER TO APPLICABLE [CARLISLE METAL EDGING INSTRUCTION MANUAL](#) FOR STEP-BY-STEP INSTALLATION PROCEDURES.
7. DETAIL NOT FOR USE WITH DESIGN "B" (BALLASTED STONE ASSEMBLY).



	• EPDM
	• APPROVED SUBSTRATE
	• SEE NOTE(S)

SecurSEAL DRIP EDGE FASCIA

For additional information, refer to Specifications



DETAIL NO.

U-1A

THERMOSET UNIVERSAL