

Sunny Brook Pavers



Overview

Carlisle has partnered with Sunny Brook Pavers to allow building owners, architects, specifiers, and contractors to obtain all the products required for a Plaza Paver system from a single source. In addition to pavers and related accessories, Carlisle also offers material, overburden removal, and wind speed warranties. Available in a wide variety of sizes, colors, and finishes, Sunny Brook Pavers protect the underlying roofing membrane and add attractive, useable space to any building.

Features and Benefits

- » Minimum 8,500 psi compressive strength; flexural strength of 1,100 pounds per square foot
- » Available in various sizes and weights; the most common size is 23½" x 23½" x 2", weighing 24 pounds per square foot
- » Available in standard colors, specific color blends, and custom colors
- » Sunny Brook Pavers can contribute to LEED® credit requirements
- » Sunny Brook Pavers can contribute to LEED® credit requirements
- » When used to completely cover a single-ply roof system, Factory Mutual (FM) Very Severe Hail (VSH) rating can be achieved

Precautions

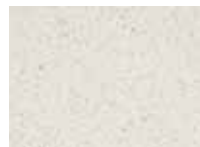
- » Pavers can be heavy. Be sure to use at least two people to move them.
- » Do not to stack pavers in an area that might exceed the structural capacity of the building.
- » Take care not to damage membrane or flashings during installation.
- » Pavers are made using natural materials; therefore, a slight color variance is expected.

Typical Properties and Characteristics

Compressive	8,500 psi
Absorption	Less than 5%
Flexural	1,100 lbs. Per sq/ft.

Typical properties and characteristics are based on samples tested and are not guaranteed for all samples of this product. This data and information is intended as a guide and does not reflect the specification range for any particular property of this product.

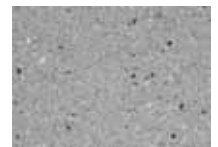
Color Options



SB-11609



SB-89D



SB-57C



SB-91D



SB-94D



SB-15C



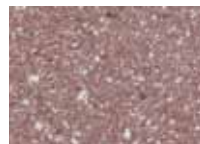
SB-22C



SB-60C



SB-Davis Brown



SB-6C



SB-30C



SB-56C



SB-83C



SB-90C



SB-21C



SB-37C



SB-B1C