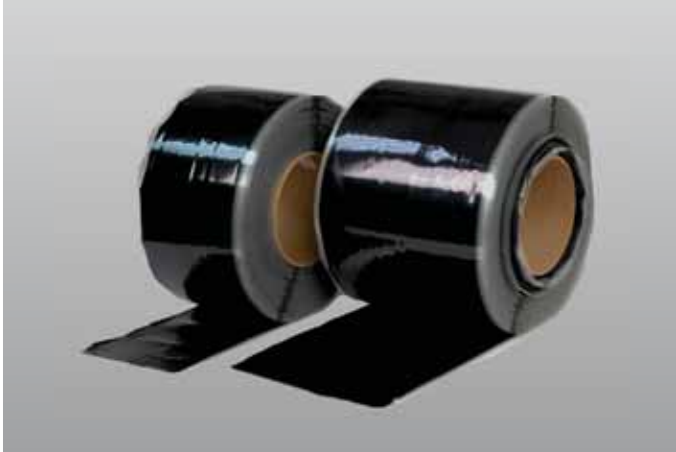


Sure-Seal® EPDM

Pressure-Sensitive Overlayment Strip



Overview

Carlisle's 70-mil Sure-Seal Pressure-Sensitive (PS) Overlayment Strip consists of a 40-mil semi-cured EPDM laminated to a 30-mil fully cured, synthetic rubber-based, pressure-sensitive adhesive. Designed for stripping in gravel stops, metal edging, drip edges, FleeceBACK® end laps, and Carlisle Seam Fastening Plates, PS Overlayment Strip saves time and labor on the jobsite.

Features and Benefits

- » Available in 6" x 100', 9" x 100', and 12" x 50'
- » Ideal for stripping in gravel stops, metal edging, drip edges, end laps, and Carlisle Seam Fastening Plates
- » Resists tearing, cracking, and abrasions in all weather conditions
- » Speeds installation by up to 50%, reducing labor costs

Installation

1. The entire surface where the PS Overlayment Strip will be applied must be clean. The adhesive on the back of the PS Overlayment Strip will not adhere to dusted or dirty surfaces. Any residual contamination will be detrimental to the bond strength of the adhesive.
2. Remove all foreign material. Remove excess mica dust by brooming or wiping with a clean, dry rag or Carlisle HP Splice Wipe. The use of Weathered Membrane Cleaner may be necessary, particularly on membrane that has been exposed for a number of weeks.

Note: Permeation-resistant gloves (that meet ANSI/ISEA 105-2005) are required for hand protection when cleaners or primers are being used.

3. Allow the membrane to dry thoroughly before proceeding.
4. Apply HP-250 or Low-VOC Primer.
5. Allow the primer to flash off until it does not transfer to a dry finger touch, yet remains tacky. Install the PS Overlayment Strip immediately after the primer has flashed off to promote adhesion and avoid contamination.
6. Peel off 10" – 12" (250 mm – 300 mm) of the protective release liner and position the PS Overlayment Strip atop the area to be covered. Press down on the exposed tape adhesive using firm, even hand pressure across the entire area. Continue this process until the full area to be flashed is completed.
7. Immediately roll the PS Overlayment Strip with a 2"-wide (50 mm) roller, using positive pressure. Roll across the PS Overlayment Strip edge, not parallel to it.
8. Apply Lap Sealant at overlaps in PS Overlayment Strip and at joints in the metal edging per the appropriate Carlisle detail.
9. To achieve proper adhesion of the PS Overlayment Strip when jobsite temperatures fall below 40°F (5°C), heat the primed area of the membrane with a hot-air gun as the flashing is applied and pressed into place.

Review Carlisle specifications and details for complete installation information.

Sure-Seal EPDM

Pressure-Sensitive Overlayment Strip

Precautions

- » Avoid prolonged contact with skin. In case of contact with skin, thoroughly wash affected area with soap and water.
- » Prolonged jobsite storage temperatures in excess of 90°F (32°C) will shorten product shelf life.
- » In warm, sunny weather, keep PS Overlayment Strip in its, box in a shaded area, until ready to use.
- » PS Overlayment Strip must be stored in a dry area.
- » Storage and use of PS Overlayment Strip at temperatures below 40°F (4°C) will result in a loss of adhesive tack and, in extreme cases, will result in no bond to the substrate. Overnight storage must be available to keep the temperature of the PS Overlayment Strip at a minimum of 60°F (15°C). Hot boxes must be provided for jobsite storage to maintain a minimum product temperature of 40°F (4°C).
- » Due to solvent flash-off, condensation may form on applied primer when the ambient temperature is near the dew point. If condensation develops, the application of primer and PS Overlayment Strip must be discontinued, as proper adhesion will not be achieved. Allow the surface to dry before applying a thin coat of primer and PS Overlayment Strip to the previously coated surface.
- » PS Overlayment Strip is a semi-cured flashing and cannot be used for flashing corners or pipes.
- » Do not allow waste products (petroleum, grease, oil, solvents, vegetable or mineral oils, animal fats, etc.) or direct steam venting to come in contact with the PS Overlayment Strip.
- » KEEP OUT OF THE REACH OF CHILDREN.

Typical Properties and Characteristics

Color	Black
Base Membrane	EPDM
Adhesive	Synthetic rubber
Tensile Strength	800 psi (5.5 Mpa) minimum
Elongation	500–700%
Tear Resistance	110–120 lbs/in (19.2–21.0 kN/m)
Ozone Resistance Condition after exposure to 100 pphm Ozone in air for 168 hrs. @ 104°F (40°C) (Specimen under 50% strain)	No cracks
Brittleness Temp	-49°F (-45°C)
Nominal Thickness	70 mils (1.78 mm)
Nominal Width Membrane Adhesive	6" (150 mm); 9" (225 mm); 12" (300 mm) 6 ³ / ₁₆ " (155 mm); 9 ³ / ₁₆ " (230 mm); 12 ³ / ₁₆ " (305 mm)
Net Weight Per Roll	6" = 23 lbs (10 kg) 9" = 38 lbs (17 kg) 12" = 25 lbs (11 kg)
Packaging	6" (150 mm) = 2 rolls/carton (100 linear ft each) 9" (225 mm) = 1 roll/carton (100 linear ft) 12" (300 mm) = 1 roll/carton (50 linear ft)
Shelf Life	1 year

Typical properties and characteristics are based on samples tested and are not guaranteed for all samples of this product. This data and information is intended as a guide and does not reflect the specification range for any particular property of this product.

LEED® Information

Pre-consumer Recycled Content	2%
Post-consumer Recycled Content	0%
Manufacturing Location	Greenville, IL
Solar Reflectance Index (SRI)	N/A