

Attachment I

X-tenda Coat EPDM Installation Guide



Priming of the roof membrane can take place 24-48 hours in advance of the coating application. Prior to application of the EPDM coating primer, the surface area should be cleaned of heavy deposits of dirt, leaves, branches, and other debris that may have accumulated on the roof surface.



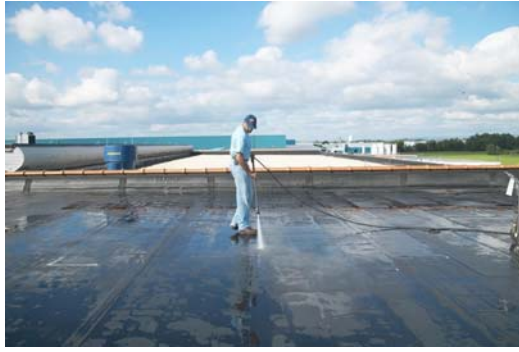
Apply EPDM coating primer with a hand pump type agricultural sprayer. Application is full strength at the rate of 500sq ft per gallon.



After application, the EPDM coating is allowed to stand for a minimum of 10 minutes. Please note that prolonged contact between the EPDM coating primer and the membrane will not adversely impact the performance of the primer.



Using a minimum 2000 psi pressure washer, rinse the membrane surface with clean water. Rinsing of the membrane shall begin at the low point of the roof working towards the highest point. The tip of the wand should be held 6-12" above the roof surface when rinsing.



Once at the highest point, work back down to the low point with a final rinse to remove residue from the roof surface.



To expedite the drying time and to remove incidental areas of ponded water, squeegee the roof membrane from the high point to the drainage areas.



Once all surface areas are completely dry, membrane repairs and seam overlayment can begin with the Coating-Ready Cover Tape. Broom or blow off the surface areas with a power leaf blower just prior to commencement of Coating-Ready Cover Tape application to remove any airborne debris or dust that may have accumulated on the surface area.



Cut Coating-Ready Cover Tape to the desired length with a utility knife or scissors. Remove release paper backing and press firmly into place, centering tape over cuts or seam overlaps. Remove any bubbles or buckling by firmly pressing with hand or seam-roller.



Repeat process for all areas, including vertical surfaces, that are to receive Xtenda Coat coating.
A minimum of 3" overlay should be maintained at intersections of Coating-Ready Cover Tape.



As indicated in the photograph, certain conditions such as curbs, skylights, vent pipes, and other miscellaneous penetrations may require double layers of Coating-Ready Cover Tape to adequately cover repair areas.



Once the roof area is properly prepared with all repairs completed, application of the Xtenda Coat base coat may begin. Refer to precautions listed in Section 3.04 prior to commencement of coating application. The Xtenda Coat coating must be installed in a minimum of 2 separate applications.





Using the provided wet film thickness gauge, periodically check to ensure proper wet film thickness coverage of the X-tenda Coat Coating (minimum one measurement per square). The wet film thickness gauge should be gently inserted into the applied wet coating making sure that the gauge is perpendicular to the surface area. If the desired wet film thickness is not obtained, additional coating should be immediately applied to the affected areas.